



WiPort™ User Guide

Part Number 900-332
Revision A 3/04

Copyright and Trademark

© 2004, Lantronix. All rights reserved. No part of the contents of this book may be transmitted or reproduced in any form or by any means without the written permission of Lantronix. Printed in the United States of America.

WiPort, with its patent-pending technology, is a trademark of Lantronix.

Ethernet is a trademark of XEROX Corporation. UNIX is a registered trademark of The Open Group. Windows 95, Windows 98, Windows 2000, Windows NT, and Windows XP are trademarks of Microsoft Corp. Netscape is a trademark of Netscape Communications Corporation.

Contacts

Lantronix Corporate Headquarters

15353 Barranca Parkway
Irvine, CA 92618, USA
Phone: 949-453-3990
Fax: 949-453-3995

Technical Support

Phone: 800-422-7044 or 949-453-7198
Fax: 949-450-7226
Online: www.lantronix.com/support
Email support@lantronix.com

Sales Offices

For a current list of our domestic and international sales offices, go to the Lantronix web site at <http://www.lantronix.com/about/contact/index.html>

Disclaimer and Revisions

Note: *This product has been designed to comply with the limits for a Class B digital device pursuant to Part 15 of FCC Rules. These limits are designed to provide reasonable protection against harmful interference in a residential installation. This equipment generates, uses, and can radiate radio frequency energy, and if not installed and used in accordance with this guide, may cause harmful interference to radio communications.*

Changes or modifications to this device not explicitly approved by Lantronix will void the user's authority to operate this device.

Contents

Copyright and Trademark _____	i
Contacts _____	i
Disclaimer and Revisions _____	ii
1: Using This Guide _____	1-1
Purpose and Audience _____	1-1
Chapter Summary _____	1-1
Additional Documentation _____	1-2
2: Introduction _____	2-1
Capabilities _____	2-1
Applications _____	2-2
Protocol Support _____	2-2
Configuration Methods _____	2-2
Addresses and Port Numbers _____	2-3
Hardware Address _____	2-3
IP Address _____	2-3
Port Numbers _____	2-3
3: Configuration using DeviceInstaller _____	3-1
Accessing WiPort using DeviceInstaller _____	3-1
Server Configuration _____	3-1
WLAN Configuration _____	3-2
Host List Configuration _____	3-3
OEM Pin Configuration _____	3-3
Channel 1 and Channel 2 Configuration _____	3-4
Email Configuration _____	3-8
4: Configuration using Web-Manager _____	4-1
Accessing WiPort using Web-Manager _____	4-1
Network Configuration _____	4-2
Automatic IP Address Configuration _____	4-3
Static IP Address Configuration _____	4-3
Server Configuration _____	4-4
Host List Configuration _____	4-5
Channel 1 and Channel 2 Configuration _____	4-6
Serial Settings _____	4-6
Connection Settings - TCP _____	4-8
Connection Settings - UDP _____	4-11
Email Configuration _____	4-12
Trigger Configuration _____	4-13
WLAN Configuration _____	4-14
OEM Pin Configuration _____	4-16
Updating Settings _____	4-17

5: Configuration via Serial Mode or Telnet Port	5-1
Accessing Setup Mode	5-1
Telnet Access	5-1
Serial Port Access	5-2
Server Configuration	5-3
Set the IP Address	5-3
Set the Gateway IP Address	5-3
Set the Netmask	5-4
Change Telnet Configuration Password	5-4
DHCP Name	5-4
Channel 1 and Channel 2 Configuration	5-5
Baudrate	5-5
I/F (Interface) Mode	5-5
Flow	5-6
Port Number	5-6
Connect Mode	5-7
Remote IP Address	5-13
Remote Port	5-13
DisConnMode	5-14
Flush Mode	5-14
DisConnTime (Inactivity Timeout)	5-16
SendChar 1 and SendChar2	5-16
Telnet Terminal Type	5-16
Channel (Port) Password	5-16
Email Configuration	5-17
Mail Server	5-17
Unit Name	5-18
Domain Name	5-18
Recipient 1	5-18
Recipient 2	5-18
Trigger 1	5-18
Trigger 2	5-19
Trigger 3	5-19
WLAN Settings	5-19
Enable WLAN	5-19
Find Network Name	5-19
Enable Ad Hoc Network Creation	5-19
Security	5-20
Data Rate	5-20
Power Management	5-20
Expert Settings	5-20
TCP Keepalive Time	5-20
ARP Cache Timeout	5-20
Security Settings	5-20
Disable SNMP	5-21
SNMP Community Name	5-21
Disable Telnet Setup	5-21

Disable TFTP Firmware Upgrade _____	5-21
Disable Port 77FE (Hex) _____	5-21
Disable Web Server _____	5-22
Disable Web Setup _____	5-22
Disable ECHO Ports _____	5-22
Enable Enhanced Password _____	5-22
Disable Port 77F0 (Hex) _____	5-22
Factory Defaults _____	5-22
Channel 1 Configuration _____	5-23
Channel 2 Configuration _____	5-23
WLAN Settings _____	5-23
Expert Settings _____	5-24
Security Settings _____	5-24
Email Settings _____	5-24
Exit Configuration Mode _____	5-24
6: Configurable Pins _____	6-1
GPIO Pins _____	6-1
Features: _____	6-1
Control Protocol _____	6-1
Guidelines _____	6-1
Commands _____	6-2
Examples _____	6-4
7: Monitor Mode _____	7-1
Entering Monitor Mode via the Serial Port _____	7-1
Entering Monitor Mode via the Network Port _____	7-1
Monitor Mode Commands _____	7-2
8: Updating Firmware _____	8-1
Obtaining Firmware _____	8-1
Reloading Firmware _____	8-1
Using TFTP: Graphical User Interface _____	8-1
Using TFTP: Command Line Interface _____	8-2
Recovering the Firmware Using the Serial Port _____	8-2
9: Troubleshooting _____	9-1
Problems and Error Messages _____	9-1
Technical Support _____	9-4

1: Using This Guide

Purpose and Audience

This guide provides the information needed to configure, use and update the WiPort and is intended for software developers and system integrators who are embedding the WiPort in their designs.

Chapter Summary

The remaining chapters in this guide include:

2:Introduction	Describes the main features of the WiPort and the protocols it supports.
3:Configuration using DeviceInstaller	Provides information for configuring the WiPort using DeviceInstaller.
4:Configuration using Web-Manager	Details configuration using the Web-Manager to set parameters such as port and server properties.
5:Configuration via Serial Mode or Telnet Port	Provides instructions for accessing Setup Mode (command line interface) using a Telnet connection through the network or a terminal or terminal emulation program through the serial port. Details the parameters that you must configure.
6:Configurable Pins	Provides instructions for configuring the eleven General Purpose I/O pins.
7:Monitor Mode	Provides instructions for accessing and using the command line interface for monitoring the network and diagnosing problems.
8:Updating Firmware	Provides instructions for obtaining the latest firmware and updating the WiPort.
9:Troubleshooting	Describes common problems and error messages and how to contact Lantronix Technical Support.

Additional Documentation

The following guides are available on the product CD and the Lantronix web site (www.lantronix.com)

<i>WiPort Development Kit Quick Start Guide</i>	Briefly explains the basics to get the WiPort up and running.
<i>WiPort Integration Guide</i>	Provides information about the WiPort hardware and integrating the WiPort into another product.
<i>DeviceInstaller User Guide</i>	Provides instructions for using the Windows-based utility to configure the WiPort and other Lantronix device servers.
<i>Com Port Redirector User Guide</i>	Provides information on using the Windows-based utility to create a virtual com port.
<i>Creating Custom Web Pages</i>	Explains the detailed requirements for adding web services to the WiPort and to other Lantronix device servers.

2: Introduction

WiPort is a wireless embedded device server that provides a network-enabling solution based on the IEEE 802.11b wireless standard. WiPort allows Original Equipment Manufacturers (OEMs) to add wireless connectivity to their products by incorporating it onto a circuit board.

The WiPort functions independently of a PC, providing a fully integrated solution that combines a processor, memory, 802.11b transceiver, and dual high-speed serial ports into a single compact module. It includes an operating system, an embedded Web server, full TCP/IP protocol stack, and WEP security. In addition, the WiPort sends email alerts and supports numerous other network communication protocols, including ARP, UDP, TCP, ICMP, Telnet, AutoIP, DHCP, HTTP, SNMP, and SMTP.

For OEMs who wish to customize the user interface by employing common and familiar tools, the WiPort serves applets to a Web browser, resulting in interactive Web pages. This customization of HTML Web pages and configuration screens tailors the WiPort to fit unique requirements.

Topic	Page
Capabilities	2-1
Applications	2-2
Protocol Support	2-2
Configuration Methods	2-2
Addresses and Port Numbers	2-3

Capabilities

The WiPort device server has the following capabilities:

- ◆ Communication between TCP and UDP to serial.
- ◆ Wireless interface (802.11b).
- ◆ Ethernet interface.
- ◆ Email notification of configurable alarms and events.
- ◆ Upgradeable firmware.
- ◆ SNMP monitoring.
- ◆ Connects devices through a TCP or UDP data channel to computers or to another device server.
- ◆ Contains a web server allowing presentation of custom content and easy configuration through the browser.
- ◆ Contains eleven programmable I/O pins used to monitor or control attached devices.

Applications

The WiPort device server connects serial devices such as those listed below to wireless and Ethernet networks using the IP protocol family.

- ◆ Remote sensing
- ◆ CNC controllers
- ◆ Data collection devices
- ◆ Telecommunications equipment
- ◆ Data display devices
- ◆ Security alarms and access control devices
- ◆ Time clocks and terminals

Protocol Support

The WiPort device server uses the TCP/IP protocol stack for network communications. Other supported protocols include:

- ◆ ARP, UDP, TCP, ICMP, Telnet, TFTP, AutoIP, DHCP, HTTP, and SNMP for network communications and management.
- ◆ TCP, UDP, and Telnet for connections to the serial port.
- ◆ TFTP for firmware and web page updates.
- ◆ IP for addressing, routing, and data block handling over the network.
- ◆ User Datagram Protocol (UDP) for typical datagram applications in which devices interact with other devices without maintaining a point-to-point connection.
- ◆ SMTP for e-mail transmission.

Configuration Methods

For the unit to operate correctly on a network, it must have a unique IP address on the network. There are three basic methods for logging into the device server and assigning IP addresses (as well as setting other configurable parameters):

DeviceInstaller: Configure the ports and other features on the WiPort using a Graphical User Interface (GUI) on a PC attached to a network. (See [3: Configuration using DeviceInstaller](#).)

Web-Manager: Through a web interface, configure the WiPort and its settings using the WiPort's Web-Manager. (See [4: Configuration using Web-Manager](#).)

Serial & Telnet Ports: There are two approaches to accessing Serial Mode. Make a Telnet connection to the network port (9999) or connect a terminal (or a PC running a terminal emulation program) to the unit's serial port. (See [5: Configuration via Serial Mode or Telnet Port](#).)

Addresses and Port Numbers

Hardware Address

The hardware address is also referred to as the Ethernet address or the MAC address. The first three bytes of the Ethernet address are fixed and read 00-20-4A, identifying the unit as a Lantronix product. The fourth, fifth, and sixth bytes are unique numbers assigned to each unit.

Example: 00-20-4A-14-01-18

Note: Make note of the MAC address. It is needed to locate the WiPort using DeviceInstaller.

IP Address

Every device connected to an IP network must have a unique IP address. This address is used to reference the specific unit. The WiPort is automatically assigned an IP address on DHCP-enabled networks as it is DHCP-enabled by default.

Port Numbers

Every TCP connection and every UDP datagram is defined by a destination IP address and a port number. For example, a Telnet application commonly uses port number 23. A port number is similar to an extension on a phone system.

The unit's serial channel (port) can be associated with a specific TCP/UDP port number. Port number 9999 is reserved for access to the unit's Setup (configuration) Mode window. Ports 0-1024 are reserved as well. For more information on reserved port numbers, refer to [Table 5-5. Reserved Port Numbers](#).

3: Configuration using DeviceInstaller

This chapter covers the steps for getting the WiPort device server online and working. This chapter includes the following topics:

Topic	Page
Accessing WiPort using DeviceInstaller	3-1
Server Configuration	3-1
WLAN Configuration	3-2
Host List Configuration	3-3
OEM Pin Configuration	3-3
Channel 1 and Channel 2 Configuration	3-4
Email Configuration	3-8

Accessing WiPort using DeviceInstaller

Note: Make note of the MAC address. It is needed to locate the WiPort using DeviceInstaller. For more information on the hardware address, see [Hardware Address](#) on page 2-3.


Follow the instructions on the product CD to install and run DeviceInstaller.

1. Click **Start**→**Programs** → **Lantronix**→**DeviceInstaller**→**DeviceInstaller**. If the PC has more than one network adapter, a message displays requesting the selection of a network adapter. Select an adapter and click **OK**.
2. Click the **Search** icon and select the WiPort unit from the list of Lantronix device servers on the local network.
3. Highlight the WiPort device in the list and click **Settings**. The Configure Device window for the WiPort unit displays.
4. To store configuration changes, click **OK**. To store and apply modifications, click **Apply**.

Server Configuration

Note: The IP address is assigned via DHCP (on DHCP-enabled networks). Assign a static IP address only if necessary.

To manually assign an IP Address:

1. Click the **Assign IP** icon .
2. If prompted, enter the hardware address (on the product label) and click **Next**.

3. Select **Assign a specific IP address** and click **Next**.
4. Enter the **IP address**. The **Subnet mask** displays automatically based on the IP address; if desired, change it. On a local network, you can leave the **Default gateway** blank (all zeros). Click **Next**.
5. Click the **Assign** pushbutton and wait several seconds until a confirmation message displays. Click **Finish**.
6. Select the device from the main window list and select **Ping** from the **Tools** menu. The Ping Device dialog box shows the IP address of the selected unit.
7. Click the **Ping** button. The results display in the Status window. Click the **Clear Status** button to clear the window so you can ping the device again.
Note: If you do not receive "Reply" messages, make sure the unit is properly attached to the network and that the IP address assigned is valid for the particular network segment you are working with. If you are not sure, check with your systems administrator.
8. Click the **Close** button to close the dialog box and return to the main window.

WLAN Configuration

Without adequate protection, a wireless LAN is susceptible to access by unauthorized users. As such, WiPort includes the Wired Equivalent Privacy (WEP) encryption standard as an additional means of security.

To configure the WiPort's WLAN settings:

Note: These settings are dependent on a given network's individual settings.

1. From the Configure Device window for the WiPort unit, click the **Advanced** tab.
2. In the WLAN Configurable Items section, enter the following fields:

Current Network Interface	Use the pull down menu to select a WLAN interface or an Ethernet interface.
Network Name to Search	Enter the name of the network in which the WiPort unit resides.
Ad Hoc Network Creation	Select Enable when using a client (such as a wireless card) to associate to a network.
Ad Hoc Network Name	Enter the network name for the Ad Hoc network.
Ad Hoc Country	From the pull down menu, select a country for the Ad Hoc network. The default is United States .
Ad Hoc Network Channel	Select the radio channel from the pull down menu for the Ad Hoc network. The default value is 11 .
Security	As an additional security measure, enable WEP on the WiPort. By default, WEP is disabled on WiPort.
Authentication	Select an authentication scheme from the pull down menu (None or Shared). Selecting Shared requires manually entering the authentication key.
Encryption	Select the encryption type from the pull down menu. 128 bits is the default encryption.

Encryption Key	Alternatively, manually enter the Encryption Key in hexadecimal value. 10 hexadecimal characters are required for 64 bit encryption. 26 hexadecimal characters are required for 128 bit encryption.
Data Rate	WiPort permits the control of the transmission rate (in Mbps).

3. Click **Apply** to apply the changes immediately to the WiPort and automatically reboot. Click **OK** to save the changes to apply at the next reboot.

Host List Configuration

If this option is set to **True**, the device server scrolls through the host list until it connects to the first available device listed in the host list table. Once it connects, the unit stops further attempts. If this connection fails, the unit continues to scroll through the table until it is able to connect to the next available IP address in the host list.

The host list supports a minimum of 1 and a maximum of 12 entries. Each entry contains an IP address and a port number. This field is available for configuration only when Active Connection is not set to **None**.

Note: The host list is disabled for Manual and Modem Mode. The unit will not accept a data connection from a remote device when the hostlist option is enabled.

To configure the WiPort's host list:

1. From the Configure Device window for the WiPort unit, click the **Advanced** tab.
2. In the Host List section, modify the following fields:

Retry Counter	Enter the value for the number of times the WiPort should attempt to retry connecting to the host list.
Retry Timeout	Enter the duration (in seconds) the WiPort should abandon attempting connection to the host list.

3. Click the "... " next to the **Host List** field to open the HostListEntry Collection Editor Window. The list of host list IP addresses display in the Members section.
4. Click on a host list member to highlight it and enter the following information in the Properties section:

Host	Enter or modify the Host's IP address.
Port	Enter the port on which the Host's IP address resides.

5. Click **Apply** to apply the changes immediately to the WiPort and automatically reboot. Click **OK** to save the changes to apply at the next reboot.

OEM Pin Configuration

There are 11 configurable hardware pins on the WiPort unit. For each pin, configure the pin function, communication direction, and its active level. For more information, see [Configurable Pins](#) on page 6-1.

To configure the WiPort's Configurable Pins:

1. From the Configure Device window for the WiPort unit, click the Advanced tab.

2. In the OEM Configurable Pins section, click the ... button next to the Configurable Pins field to open the ConfigurablePin Collection Editor window.
3. Highlight a Configurable Pin from the Members section to select it for configuration.
4. In the Configurable Pin Properties section (right side of the window), modify the following fields:

Config Pin Function	From the pull down menu, select the purpose of the specified pin.
Config Pin Direction	Select whether the pin receives input or transmits output. This field is modifiable only when Config Pin Function is set to GPIO .
Config Pin Active Level	Select the signal active level (Low or High). The default is Low .

5. Click **OK** to store the configurable pin settings and close the ConfigurablePin Collection Editor.
6. Click **Apply** from the Configure Device window to apply the changes immediately. The WiPort device automatically reboots.

Channel 1 and Channel 2 Configuration

Channel 1 and Channel 2 configurations define how the serial port responds to network and serial communications.

To configure the channel configurations:

1. From the Configure Device window for the WiPort unit, click the **Ports** tab. The list of available ports display.
2. Click on a port number and click **Edit Settings**. The Port Properties window opens.
3. Click the **Port Settings** tab. In the available fields, change the following pull down menu options as necessary:

Baud Rate	The unit and attached serial device, such as a modem, must agree on a speed or baud rate to use for the serial connection. Valid baud rates are 300, 600, 1200, 2400, 4800, 9600 (default), 19200, 38400, 57600, 115200, 230400, 460800, or 921600.
Data bits	Indicates the number of bits in a transmitted data package.
Parity	Refers to the checking whether data has been lost or written over when transmitted between computers. The default is None .
Stop bits	The stop bit follows the data and parity bits in serial communication. It indicates the end of transmission.
Flow control	Flow control manages data flow between devices in a network to ensure it is processed efficiently. Too much data arriving before a device is prepared to manage it causes lost or retransmitted data.

The following table demonstrates some common Interface Mode (I/F) settings:

Table 3-1. Common Interface Mode Settings

Common I/F Mode Setting
RS-232C, 8-bit, No Parity, 1 stop bit
RS-232C, 7-bit, Even Parity, 1 stop bit

To configure advanced channel configurations:

- From the Configure Device window for the WiPort unit, click the **Ports** tab. The list of available ports display.
- Click on a port number and click **Edit Settings**. The Port Properties window opens.
- Click the **Advanced** tab. In the available fields, change the following pull down menu options as necessary:

Serial Settings

Baud Rate	The unit and attached serial device, such as a modem, must agree on a speed or baud rate to use for the serial connection. Valid baud rates are 300, 600, 1200, 2400, 4800, 9600 (default), 19200, 38400, 57600, 115200, 230400, 460800, or 921600.
Data bits	Indicates the number of bits in a transmitted data package.
Flow control	Flow control manages data flow between devices in a network to ensure it is processed efficiently. Too much data arriving before a device is prepared to manage it causes lost or retransmitted data.
Stop bits	The stop bit follows the data and parity bits in serial communication. It indicates the end of transmission.
Parity	Refers to the checking whether data has been lost or written over when transmitted between computers. The default is None.

UDP Datagram Mode

Datagram Mode	When the UDP option is in effect, the unit never attempts to initiate a TCP connection because it uses UDP datagrams to send and receive data. Select True to enable Datagram Mode.
Datagram Type	Configurable when Datagram Mode is set to True . Configures remote IP or network broadcast address and the remote port. Enter 01 for directed or broadcast UDP.

Passive Connection

Accept Passive Connection	Select Yes to permit incoming network connection on this port.
Local Port	Port number for an incoming connection. Also used as the source port number.
Password Required	Select True to require a password for incoming connections.

Port Password	This parameter appears only when Password Required is set to True . Enter a password for the selected channel or serial port.
----------------------	---------------------------------------------------------------------------------------------------------------------------------------------

Active Connection

Active Connection	Defines the unit's connection method. The default is None (no Active Connection).
--------------------------	------------------------------------------------------------------------------------------

Terminal Type	This field is available for configuration only when Telnet Mode to True . Use the terminal name for the Telnet terminal type. Enter only one name. When this option is enabled, the unit also reacts to the EOR (end of record) and binary options, which can be used for applications such as terminal emulation to UNIX hosts.
----------------------	--------------------------------------------------------------------------------------------------------------------------------------------------------------------------------------------------------------------------------------------------------------------------------------------------------------------------------------------

Remote Port	This field is available for configuration only when Active Connection is not set to None . Set the remote TCP port number for the unit to make outgoing connections. This parameter defines the port number on the target host to which a connection is attempted. To connect an ASCII terminal to a host using the unit for login purposes, use the remote port number 23 (Internet standard port number for Telnet services).
--------------------	----------------------------------------------------------------------------------------------------------------------------------------------------------------------------------------------------------------------------------------------------------------------------------------------------------------------------------------------------------------------------------------------------------------------------------------------

Use Host List	This field is available for configuration only when Active Connection is not set to None . If this option is set to True , the device server attempts a connection from the host list. This process stops at the first valid connection. The host list is disabled for Manual or Modem Mode. The unit will not accept a data connection from an incoming remote device when the host list option is enabled. For information on configuring the host list, see Host List Configuration on page 3-3.
----------------------	--------------------------------------------------------------------------------------------------------------------------------------------------------------------------------------------------------------------------------------------------------------------------------------------------------------------------------------------------------------------------------------------------------------------------------------------------------------------------------------------------------------------------------------------

Modem Emulation Mode	In Modem (Emulation) Mode, the unit presents a modem interface to the attached serial device. It accepts AT-style modem commands, and handles the modem signals accordingly. For more information on Modem Emulation Mode, see Modem Mode on page 5-11. Selecting Without Echo tells the modem not send an answer to the commands received (or display typed data). Choose Full Verbose for the unit to echo modem commands and respond to a command with a message string. Character Response tells the WiPort unit to echo modem commands and respond to a command with a single character response.
-----------------------------	---------------------------------------------------------------------------------------------------------------------------------------------------------------------------------------------------------------------------------------------------------------------------------------------------------------------------------------------------------------------------------------------------------------------------------------------------------------------------------------------------------------------------------------------------------------------------------------------------------------------------------------------------------

Telnet Mode	This field is available for configuration only when Active Connection is not set to None . Select True to permit a Telnet connection to the WiPort unit.
--------------------	------------------------------------------------------------------------------------------------------------------------------------------------------------------------

Remote Host	This field is available for configuration only when Active Connection is not set to None . Denotes the destination IP address used with an outgoing connection.
--------------------	---------------------------------------------------------------------------------------------------------------------------------------------------------------------------

Connection Response	A single character is transmitted to the serial port when there is a change in connection state. Default setting is None .
----------------------------	-----------------------------------------------------------------------------------------------------------------------------------

Disconnection

Disable Hard Disconnect	The TCP connection closes even if the remote site does not acknowledge a disconnect request.
Disconnect with modem_control_in	The connection drops when modem_control_in transitions from a high state to a low state.
Disconnect with EOT	The connection is dropped when Ctrl-D or Hex 04 is detected. Both Telnet mode and Disconnect with EOT must be enabled for Disconnect with EOT to function properly. Ctrl D is only detected going from the serial port to the network.
Inactivity Timeout	Use this parameter to set an inactivity timeout. The unit drops the connection if there is no activity on the serial line before the set time expires. Enter time in the format mm:ss, where m is the number of minutes and s is the number of seconds. To disable the inactivity timeout, enter 00:00 .

Connection

Connection LED	Select Blink for the status LEDs to blink upon connection or None for no LED output.
-----------------------	----------------------------------------------------------------------------------------------------

Buffer Flushing

Flush Input Buffer	
At Time of Disconnect	Clear the network buffer when a network connection to or from the serial port drops.
On Active Connection	Clear the network buffer upon initializing a connection.
On Passive Connection	Clear the buffer upon a connection initiated from the network to the serial port.
Flush Output Buffer	
At Time of Disconnect	Clear the buffer when the network connection to or from the device is dropped.
On Active Connection	Clear the buffer with a new connection initiated from the device to the network.
On Passive Connection	Clear the buffer with a connection from the network to the device.

Packing

Enable Packing	Two firmware-selectable packing algorithms define how and when packets are sent to the network. The standard algorithm is optimized for applications in which the unit is used in a local environment, allowing for very small delays, while keeping the packet count low. The alternate packing algorithm optimizes the packet for the network and is especially useful in applications in a routed Wide Area Network (WAN). Adjusting parameters in this mode can economize the network data stream. Select True to enable packing on the WiPort.
Idle Time	Select the maximum time for inactivity between data bytes on the serial port. The default time is 12 milliseconds.
Match Byte 1	Use to set the termination byte. Set this value to 00 if not used.
Match Byte 2	Use to indicate the end of a series of data to be sent as one group. Set this value to 00 if specific functions are not needed.
Match 2 Byte Sequence	Used with Match Byte 1 and Match Byte 2 to indicate the end of a series of data to be sent as one group. The sequence must occur sequentially to indicate to the WiPort end of the data packet.
Send Frame Only	After the detection of the byte sequence, indicates whether to send the data frame or the entire buffer (i.e. include the trailing bytes). Select True to send only the data frame.
Send Trailing Bytes	Select the number of bytes to send after the end-of-sequence characters.

- To exit the Channel 1 and Channel 2 configurations, click **OK**.

Email Configuration

The unit sends an e-mail when a specific trigger event occurs. There are three separate triggers, based on any combination of the configurable pins (PIO) when selected as user I/O functions. Optionally, use a two-byte serial string to initiate a trigger.

To configure the WiPort's email settings:

- From the Configure Device window for the WiPort unit, click the **Advanced** tab.
- In the Email Notification section, enter the following fields:

Domain Name	Enter the Email server's domain name.
Mail Server	Enter the IP address of the mail server.
Recipients	Click the "..." box to open the Email Recipient Collection Editor window. Click on an entry in the Members section and enter the email address in the Email Recipient Properties window. Click OK when finished.

Triggers	<p>A trigger event occurs when the unit receives the specified trigger input as a result of a specified combination of conditions on the configurable pins.</p> <p>Each trigger is independent of the others. Each condition within an individual trigger must be met before the unit will send the Email.</p> <p>Click the “...” box to open the Email Trigger Collection Editor window. Highlight a trigger in the Members section and modify its properties in the Email Trigger Properties section. Click OK when finished.</p> <p>For more information on triggers, see Email Configuration on page 5-17</p>
Unit Name	<p>Enter the username used by the WiPort to send Email messages.</p>

3. Click **Apply** to apply the changes immediately to the WiPort.

4: Configuration using Web-Manager

This chapter describes how to configure the WiPort using Web-Manager, Lantronix's browser-based configuration tool. The unit's configuration is stored in nonvolatile memory and is retained without power. The unit performs a reset after the configuration is changed and stored.

This chapter includes the following topics:

Topic	Page
Accessing WiPort using Web-Manager	4-1
Network Configuration	4-2
Server Configuration	4-4
Host List Configuration	4-5
Channel 1 and Channel 2 Configuration	4-6
Email Configuration	4-12
WLAN Configuration	4-14
OEM Pin Configuration	4-16
Updating Settings	4-17

Accessing WiPort using Web-Manager

Note: Make note of the MAC address. It is needed to locate the WiPort using DeviceInstaller. For more information on the hardware address, see [Hardware Address](#) on page 2-3.

Follow the instructions on the product CD to install and run DeviceInstaller.

1. Click **Start**→**Programs** → **Lantronix**→**DeviceInstaller**→**DeviceInstaller**. If the PC has more than one network adapter, a message displays requesting the selection of a network adapter. Select an adapter and click **OK**.
2. Click the **Search** icon and select the WiPort unit from the list of Lantronix device servers on the local network.
3. Highlight the WiPort device in the list and click **Web**. Web-Manager for WiPort opens in a new browser window.

Figure 4-1. Web-Manager



The main menu is displayed in the left side of the Web-Manager window.

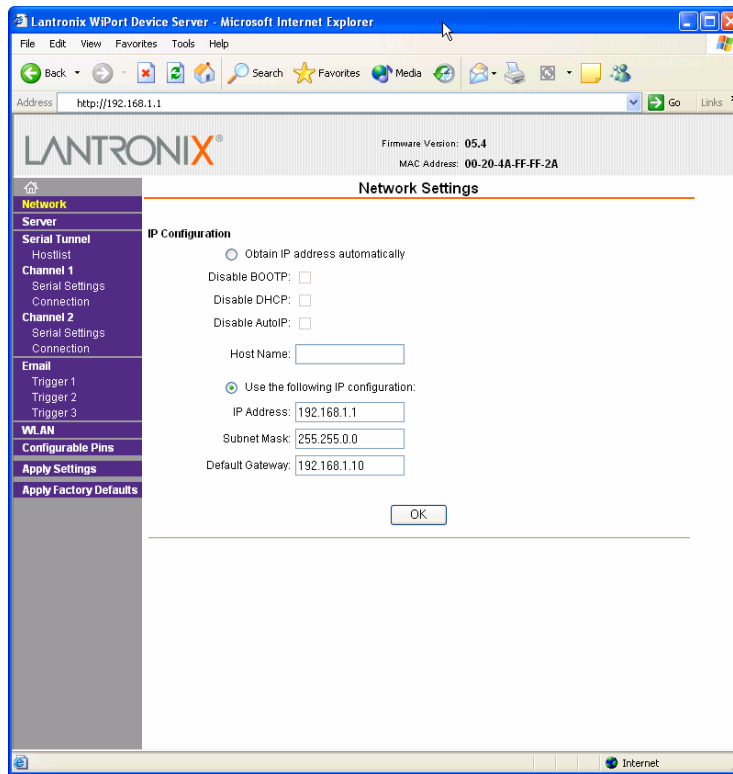
Note: Alternatively, access the WiPort's Web-Manager if it is connected to the network by entering its IP address in a web browser.

Network Configuration

The unit's network values display upon selecting **Network** from the main menu. The following sections describe the configurable parameters within the Network configuration menu.

Note: The IP address is assigned via DHCP (on DHCP-enabled networks). Assign a static IP address only if necessary.

Figure 4-2. Network Settings



Automatic IP Address Configuration

To automatically assign an IP address and its network configuration:

1. Click **Network** from the main menu.
2. Select **Obtain IP address automatically**.
3. Enter the following (as necessary):

Disable BOOTP	Leave the checkbox empty to enable Bootstrap Protocol (BOOTP). The BOOTP server automatically assigns the IP address from a pool of addresses.
Disable DHCP	Leave the checkbox empty to enable Dynamic Host Configuration Protocol (DHCP). DHCP automatically assigns a leased IP address to the WiPort unit.
Disable Auto-IP	The WiPort generates an IP in the 169.254.x.x address range with a Class B subnet. Select the checkbox to disable this feature.
Host Name	Enter the name of the host on the network.

Note: Disabling BOOTP, DHCP, and Auto-IP (i.e. all three checkboxes) is not advised as the only available IP assignment method will then be ARP or serial port.

4. Click the **OK** button when finished.

Static IP Address Configuration

To manually assign an IP address and its network configuration:

1. Click **Network** from the main menu.
2. Select **Use the following IP configuration**.
3. Enter the following (as necessary):

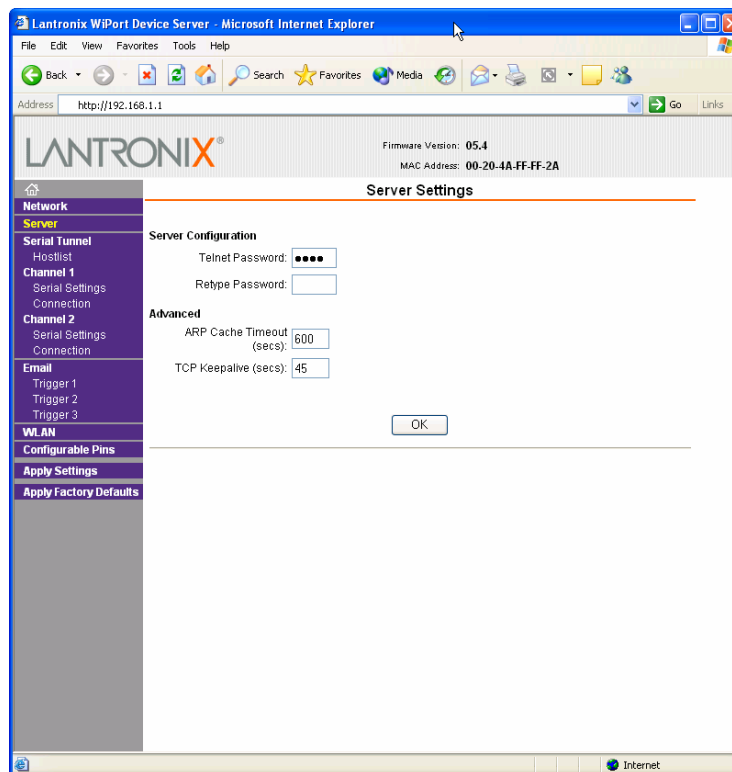
IP Address	If DHCP is not used to assign IP addresses, enter it manually. The IP address must be set to a unique value in the network.
Subnet Mask	A subnet mask defines the number of bits taken from the IP address that are assigned for the host part.
Default Gateway	The gateway address, or router, allows communication to other LAN segments. The gateway address should be the IP address of the router connected to the same LAN segment as the unit. The gateway address must be within the local network.

4. Click the **OK** button when finished.

Server Configuration

The unit's server values display upon selecting **Server** from the main menu. The following sections describe the configurable parameters within the Server configuration menu.

Figure 4-3. Server Settings



To configure the WiPort's device server settings:

1. Click **Server** from the main menu.
2. Configure or modify the following fields:

Server Configuration

Telnet Password	Enter the password required for Telnet access.
Retype Password	Re-enter the password required for Telnet access.

Advanced

ARP Cache Timeout	When the unit communicates with another device on the network, it adds an entry into its ARP table. ARP Cache timeout defines the number of seconds (1-600) before it refreshes this table.
TCP Keepalive	TCP Keepalive time defines how many seconds the unit waits during an inactive connection before checking its status. If the unit does not receive a response, it drops that connection. Enter a value between 0 and 60 seconds. 0 disables keepalive.

Host List Configuration

The WiPort scrolls through the host list until it connects to a device listed in the host list table. After a successful connection, the unit stops trying to connect to any others. If this connection fails, the unit continues to scroll through the table until the next successful connection.

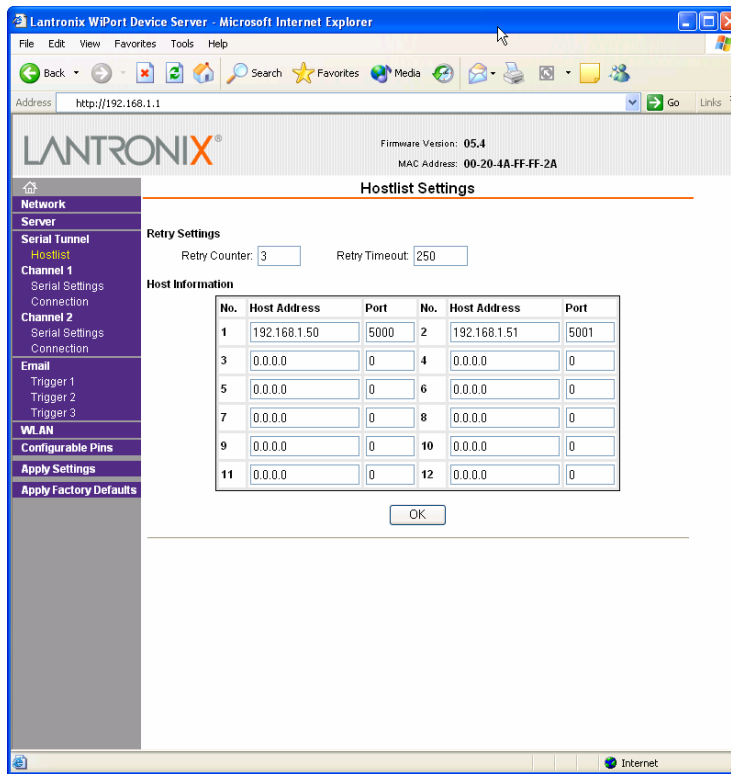
The host list supports a minimum of 1 and a maximum of 12 entries. Each entry contains an IP address and a port number.

Note: *The host list is disabled for Manual and Modem Mode. The unit will not accept a data connection from a remote device when the hostlist option is enabled.*

To configure the WiPort's host list:

1. From the main menu, click the **Hostlist** tab.

Figure 4-4. Hostlist Settings



2. Enter or modify the following fields from the Hostlist Settings window:

Retry Settings

Retry Counter	Enter the value for the number of times the WiPort should attempt to retry connecting to the host list.
Retry Timeout	Enter the duration (in seconds) the WiPort should abandon attempting a connection to the host list.

Host Information

Host Address	Enter or modify the host's IP address.
Port	Enter the target port number.

Channel 1 and Channel 2 Configuration

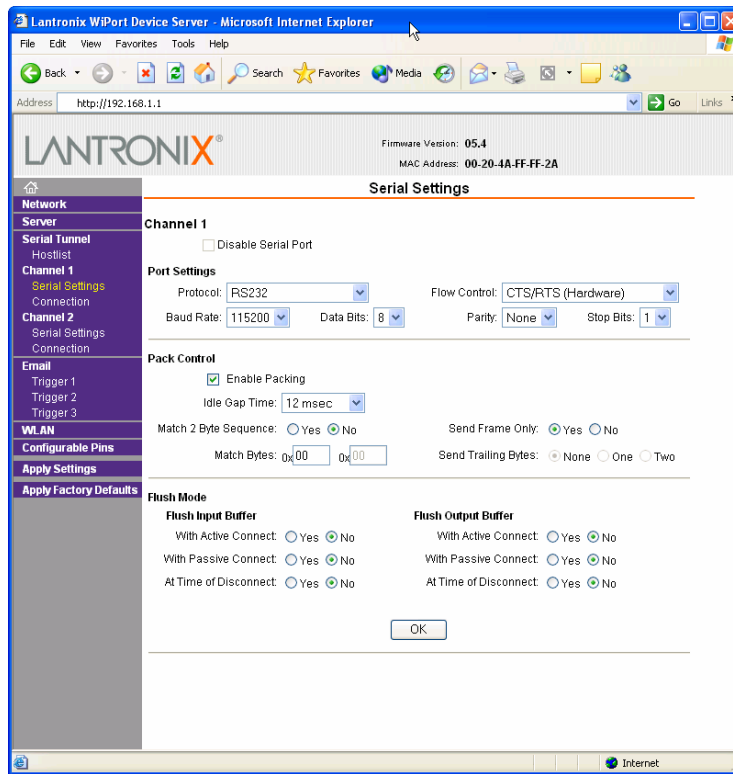
Channel 1 and Channel 2 configurations define how the serial ports respond to network and serial communication.

Serial Settings

To configure a channel's serial settings:

1. From the main menu, click **Serial Settings** for either Channel 1 or Channel 2 to display the Serial Settings page for the selected channel.

Figure 4-5. Channel Serial Settings



2. In the available fields, enter the following information:

Channel 1

Disable Serial Port	Available on Channel 1 settings only. When selected, disables communication through the serial port.
----------------------------	------------------------------------------------------------------------------------------------------

Port Settings

Protocol	Select the protocol type from the pull down menu for the selected channel.
Flow Control	Flow control manages data flow between devices in a network to ensure it is processed efficiently. Too much data arriving before a device is prepared to manage it causes lost or retransmitted data.
Baud Rate	The unit and attached serial device, such as a modem, must agree on a speed or baud rate to use for the serial connection. Valid baud rates are 300, 600, 1200, 2400, 4800, 9600 (default), 19200, 38400, 57600, 115200, 230400, 460800, or 921600.
Data Bits	Indicates the number of bits in a transmitted data package.
Parity	Checks for the parity bit. The default is None .
Stop Bits	The stop bit follows the data and parity bits in serial communication. It indicates the end of transmission.

Pack Control

Enable Packing	Select the checkbox to enable packing on the WiPort. Two firmware-selectable packing algorithms define how and when packets are sent to the network. The standard algorithm is optimized for applications in which the unit is used in a local environment, allowing for very small delays for single characters, while keeping the packet count low. The alternate packing algorithm minimizes the packet count on the network and is especially useful in applications in a routed Wide Area Network (WAN). Adjusting parameters in this mode can economize the network data stream.
Idle Gap Time	Select the maximum time for inactivity. The default time is 12 milliseconds.
Match 2 Byte Sequence	Use to indicate the end of a series of data to be sent as one group. The sequence must occur sequentially to indicate to the WiPort end of the data collection.
Match Bytes	Use to indicate the end of a series of data to be sent as one group. Set this value to 00 if specific functions are not needed.
Send Frame Only	After the detection of the byte sequence, indicates whether to send the data frame or the entire buffer. Select True to send only the data frame.
Send Trailing Bytes	Select the number of bytes to send after the end-of-sequence characters.

Flush Input Buffer (Serial to Network)

With Active Connect	Select Yes to clear the input buffer with a connection that is initiated from the device to the network.
With Passive Connect	Select Yes to clear the input buffer with a connection initiated from the network to the device.
At Time of Disconnect	Select Yes to clear the input buffer when the network connection to or from the device is disconnected.

Flush Output Buffer (Network to Serial)

With Active Connect	Select Yes to clear the output buffer with a connection that is initiated from the device to the network.
With Passive Connect	Select Yes to clear the output buffer with a connection initiated from the network to the device.
At Time of Disconnect	Select Yes to clear the output buffer when the network connection to or from the device is disconnected.

Connection Settings - TCP

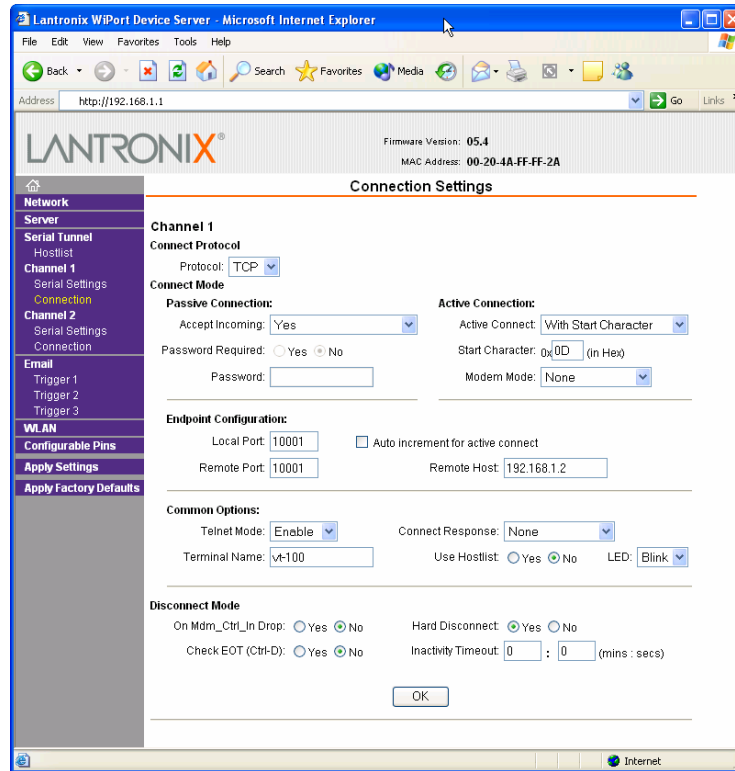
To configure a channel's TCP settings:

1. From the main menu, click **Connection** for either Channel 1 or Channel 2 to display the Connection Settings page for the selected channel.
2. In the available fields, enter the following information:

Connect Protocol

Protocol	Select TCP from the pull down menu.
-----------------	--------------------------------------------

Figure 4-6. TCP Connection Settings



Connect Mode: Passive Connection

Accept Incoming	Select Yes to accept incoming connections.
Password Required	Determines whether a password is required for an incoming passive connection. Field is not available when a password is set for Telnet mode.
Password	If Password Required was set to Yes , enter the password for passive connections.

Connect Mode: Active Connection

Active Connect	Select None to disable Active Connect. Otherwise, indicate the connection type from the available list. Never Accept Incoming rejects all external connection attempts. Accept with modem_control_in Active accepts external connection requests only when the modem_control_in input is asserted. Cannot be used with Modem Mode. Always Accept accepts any incoming connection when a connection is not already established.
Start Character	If Active Connect is set to With Start Character , enter the start character in this field.
Modem Mode	Indicates the on-screen response type when in Modem Mode (if enabled).

Endpoint Configuration

Local Port	Enter the local port number.
Auto increment local port number	Select to auto-increment the local port number for new outgoing connections. The range of auto-incremented port numbers is 50,000 to 59,999 and loops back to the beginning when the maximum range is reached.
Remote Port	Enter the remote port number.
Remote Host	Enter the IP address of the remote device.

Common Options

Telnet Mode	This field is available for configuration only when Active Connection is not set to None . Select Enable to permit Telnet communication to the WiPort unit.
Terminal Name	This field is available for configuration only when Telnet Mode is set to Enable . Use the terminal name for the Telnet terminal type. Enter only one name. When this option is enabled, the unit also reacts to the EOR (end of record) and binary options, which can be used for applications such as terminal emulation to IBM hosts.
Connect Response	A single character is transmitted to the serial port when there is a change in connection state. Default setting is None .
Use Hostlist	If this option is set to True , the device server scrolls through the host list until it connects to a device listed in the host list table. Once it connects, the unit stops trying to connect to any others. If this connection fails, the unit continues to scroll through the table until it is able to connect to another IP in the host list. The host list is disabled for Manual Mode and for Modem Mode. The unit will not accept a data connection from a remote device when the host list option is enabled. For information on configuring the host list, see Host List Configuration on page 4-5.
LED	Select Blink for the status LEDs to blink upon connection or None for no LED output.

Disconnect Mode

On Mdm_Ctrl_In Drop	Set to Yes for the network connection to or from the serial port to drop when modem_control_in transitions from a high state to a low state.
Hard Disconnect	When set to Yes , the TCP connection closes even if the remote site does not acknowledge the disconnect request.
With EOT	Choose Yes to drop the connection when Ctrl-D or Hex 04 is detected. Both Telnet mode and Disconnect with EOT must be enabled for Disconnect with EOT to function properly. Ctrl D is only detected going from the serial port to the network.

Inactivity Timeout	Use this parameter to set an inactivity timeout. The unit drops the connection if there is no activity on the serial line before the set time expires. Enter time in the format mm:ss, where m is the number of minutes and s is the number of seconds. To disable the inactivity timeout, enter 00:00 .
---------------------------	-----------------------------------------------------------------------------------------------------------------------------------------------------------------------------------------------------------------------------------------------------------------------------------------------------------------

Connection Settings - UDP

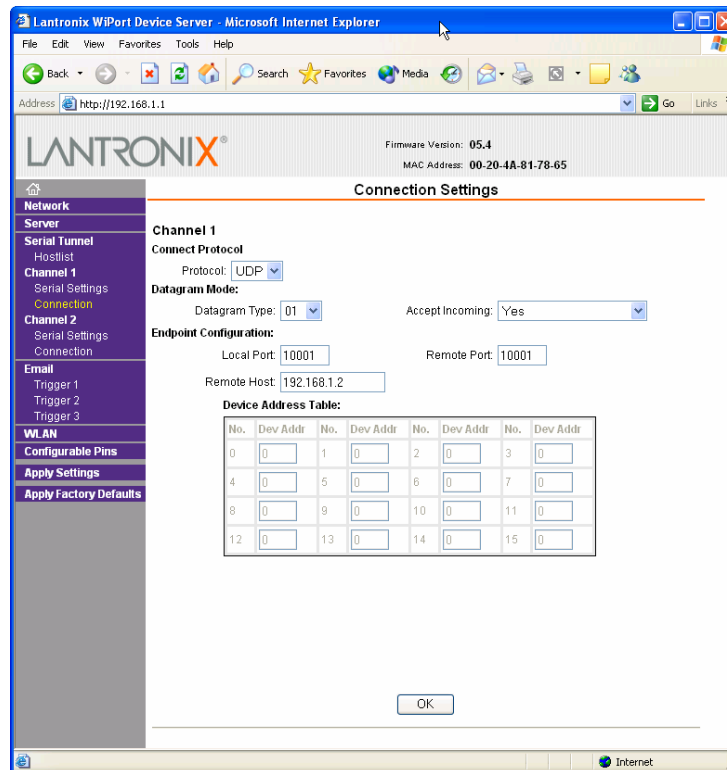
To configure a channel's UDP settings:

1. From the main menu, click **Connection** for either Channel 1 or Channel 2 to display the Connection Settings page for the selected channel.
2. In the available fields, enter the following information:

Connect Protocol

Protocol	Select UDP from the pull down menu.
-----------------	--------------------------------------------

Figure 4-7. UDP Connection Settings



Datagram Mode

Datagram Type	Configures remote IP or network broadcast address and the remote port. Enter 01 for directed or broadcast UDP.
Accept Incoming	Select Yes to accept incoming UDP datagrams.

Endpoint Configuration

Local Port	Enter the local port number.
-------------------	------------------------------

Remote Port	Enter the port number of the remote device.
Remote Host	Enter the IP address of the remote device.
Change Address Table	Field enabled when Datagram Type is set to FD . Enter values between 1-255 to identify units on the local network of device servers.

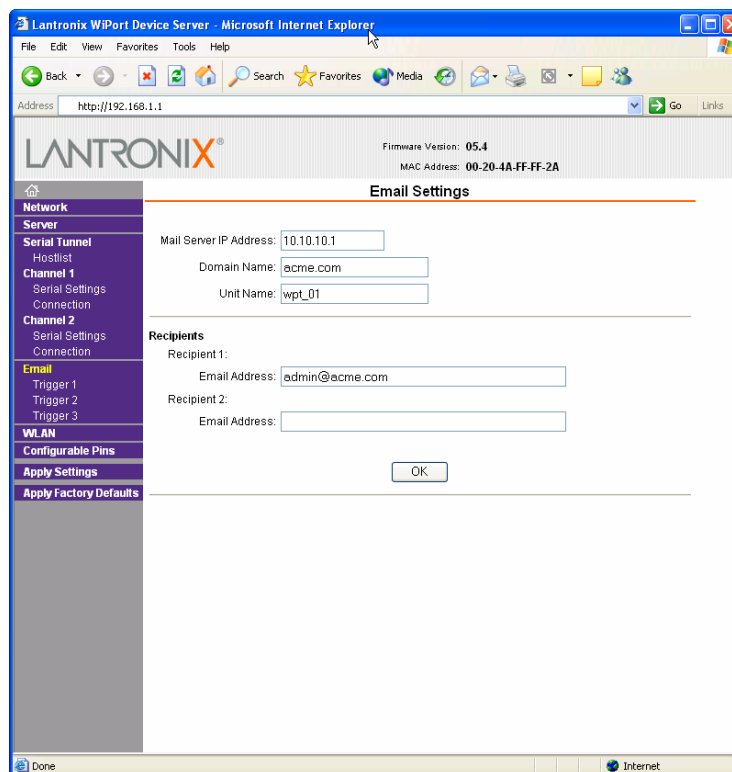
Email Configuration

The unit sends an Email to multiple recipients when a specific trigger event occurs. There are three separate triggers, based on any combination of the configurable pins when selected as user I/O functions. Optionally, use a two-byte serial string to initiate a trigger. Each trigger is independent of the others. Each condition within an individual trigger must be met before the unit will send the Email.

To configure the WiPort's email settings:

1. From the main menu, select **Email** to open the Email Settings window.

Figure 4-8. Email Settings



2. Configure the following fields:

Mail Server IP Address	Enter the IP address of the mail server.
Domain Name	Enter the Email server's domain name.
Unit Name	Enter the username used by the WiPort to send Email messages.

Recipients

Recipient 1: Email Address	Enter the email address designated to receive email notifications.
Recipient 2: Email Address	Enter an additional email address designated to receive email notifications.

Trigger Configuration

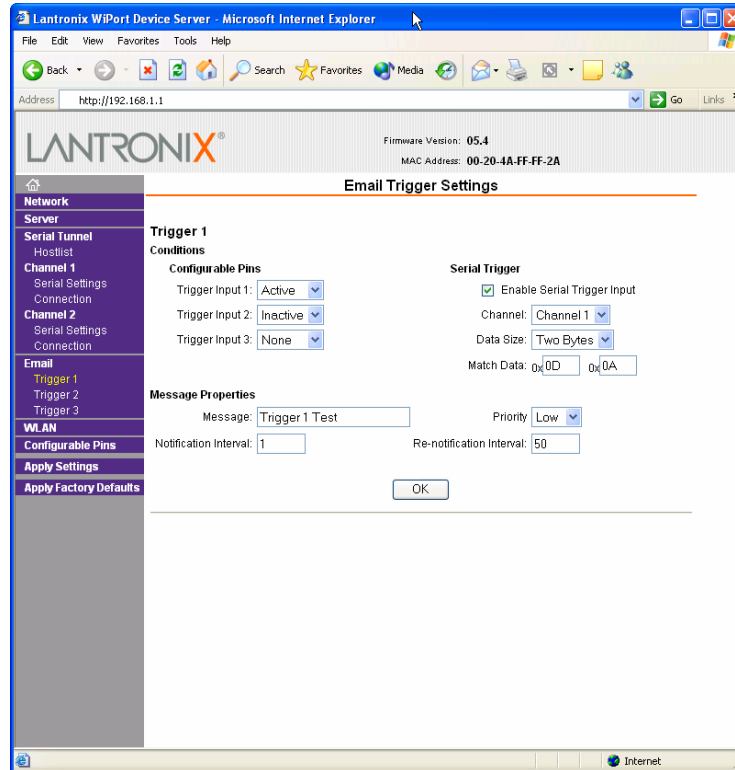
A trigger event occurs when the unit receives the specified trigger input as a result of a specified combination of conditions on the configurable pins.

Set the configurable pins to Active, Inactive, or None. The configurable pins are disabled if they are all set to None. If both the serial sequence and the configurable pins are disabled, the trigger is disabled.

To configure the WiPort's email trigger settings:

1. From the main menu, select **Trigger 1**, **Trigger 2**, or **Trigger 3** to configure the desired Trigger settings. The **Email Trigger Settings** page opens.

Figure 4-9. Email Trigger Settings



2. Configure the following fields:

Conditions

Configurable Pins	Select the condition from the pull down menu for the configurable pins. Repeat for each Trigger Input field.
Enable Serial Trigger Input	When selected, specified serial communications count as a trigger input.

Channel	Select the channel prompting the trigger.
Data Size	Select the data size prompting the trigger.
Match Data	Enter the data which, when appears in the communication stream, prompts a trigger.

Note: All of the conditions must match for an email notification to be sent.

Message Properties

Message	The subject line of the trigger event email to the specified recipient(s).
Priority	The priority level for the e-mail.
Notification Interval	The notification interval is the minimum time allowed between individual triggers. If a trigger event occurs within the minimum interval since the last trigger, it is ignored.
Re-notification Interval	Indicates the time interval in which a new email message is sent to the recipient(s) when a single trigger event remains active.

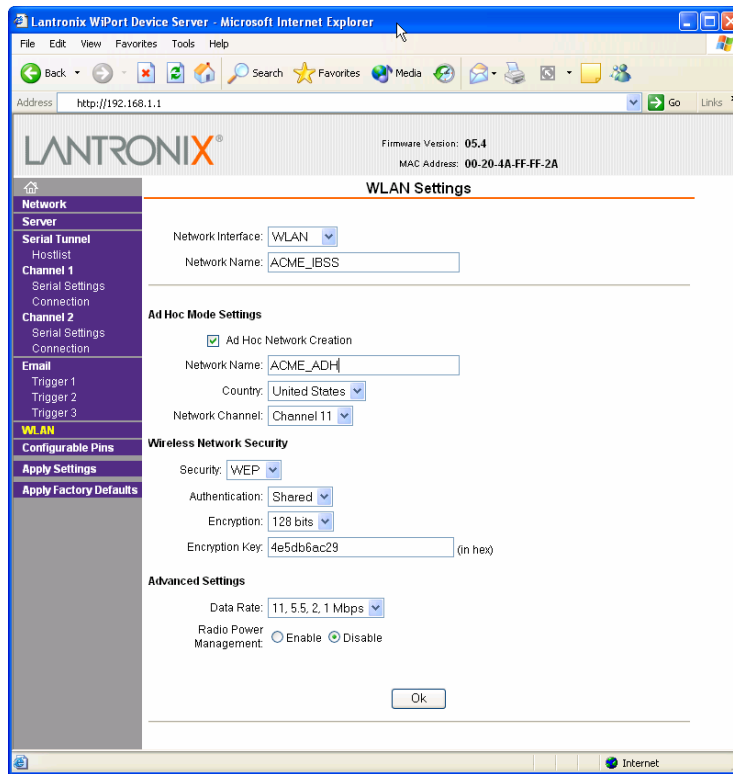
WLAN Configuration

Without adequate protection, a wireless LAN is susceptible to access by unauthorized users. As such, WiPort includes the Wired Equivalent Privacy (WEP) encryption standard as an additional means of security.

To configure the WiPort's WLAN settings:

1. Select **WLAN** from the main menu to open the WLAN Settings window.

Figure 4-10. WLAN Settings



2. Enter or modify the following fields:

Network Interface	Use the pull down menu to select a WLAN interface or an Ethernet interface.
Network Name	Enter the name of the network where the WiPort is located.

Ad Hoc Settings

Ad Hoc Network Creation	Select the checkbox when using a client (such as a wireless card) to communicate with the WiPort instead of an Access Point.
Ad Hoc Network Name	Enter the network name for the Ad Hoc network.
Ad Hoc Network Channel	Select from the pull down menu the radio channel for the Ad Hoc network. The default value is 11 .
Ad Hoc Country	From the pull down menu, select a country for the Ad Hoc network. The default is United States .

Wireless Network Security

Security	As an additional security measure, enable WEP on the WiPort. By default, WEP is disabled on WiPort.
Authentication	Select an authentication scheme (None or Shared) from the drop down menu.
Encryption	Select the encryption type from the pull down menu. 128 bits is the default encryption.

Encryption Key	Field is enabled when WEP is selected as the Security type. Enter the Encryption Key in hexadecimal value
-----------------------	-------------------------------------------------------------------------------------------------------------------------

Advanced Settings

Data Rate	WiPort permits the control of the transmission rate. Select the data rate (in Mbps) from the pull down menu.
Radio Power Management	Power management reduces the overall power consumption of the WiPort unit. Selecting Enable increases the response time.

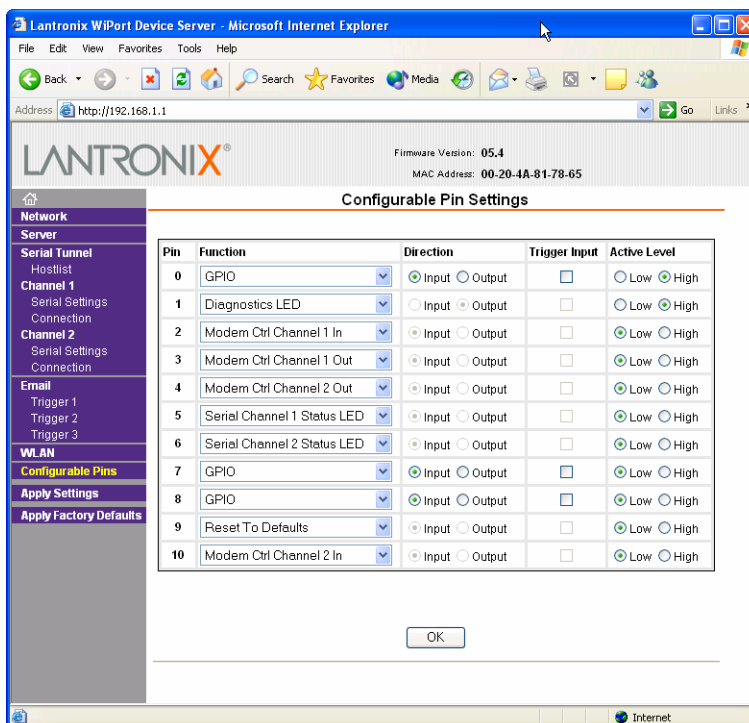
OEM Pin Configuration

There are 11 configurable hardware pins on the WiPort unit. For each pin, configure the pin function, communication direction, and its activity level. For more information, see [Configurable Pins](#) on page 6-1.

To configure the WiPort's OEM Configurable Pins:

1. Click **Configurable Pins** from the main menu to open the Configurable Pins window.

Figure 4-11. Configurable Pins Settings



2. Configure or modify the following fields for each pin:

Function	From the pull down menu, select the purpose of the specified pin.
Active Level	Select the signal active level (Low or High).
Direction	Select whether the pin inputs or outputs.

Updating Settings

Click the **Apply Settings** button from the main menu to save and apply the configuration changes.

5: Configuration via Serial Mode or Telnet Port

Configure the unit so that it can communicate on a network with your serial device. As an alternative to DeviceInstaller and Web-Manager, the WiPort unit is configurable using a terminal program to access the serial port locally. Using this terminal program to respond to prompts is referred to as the **Setup Mode**. A Telnet connection may also be used to configure the unit over the network.

The unit's configuration is stored in nonvolatile memory and is retained without power. You can change the configuration at any time. The unit performs a reset after the configuration has been changed and stored.

Note: The menus in this section show a typical device. Not all devices display information in the same manner.

This chapter includes the following topics:

Topic	Page
Accessing Setup Mode	5-1
Server Configuration	5-3
Channel 1 and Channel 2 Configuration	5-5
Email Configuration	5-17
WLAN Settings	5-19
Expert Settings	5-20
Security Settings	5-20
Factory Defaults	5-22
Exit Configuration Mode	5-24

Accessing Setup Mode

Telnet Access

Note: Alternatively, use DeviceInstaller to access Telnet. Select the device from the

main window list, and click **Telnet** . If using **Telnet** from the DeviceInstaller toolbar, skip steps 1 through 3.

To configure the unit over the network, establish a Telnet connection to port 9999:

1. From the Windows **Start** menu, click **Run**.
2. From the Run dialogue box, type the following command (where x.x.x.x is the IP address and 9999 is the unit's fixed network configuration port number):

```
Windows: telnet x.x.x.x 9999
UNIX: telnet x.x.x.x:9999
```

3. Click **OK**. The following information displays:

Figure 5-1. MAC Address

```
MAC address 00204AFFFF30
Software version 05.3 (040129) WPT
Press Enter to go into Setup Mode
```

4. To enter the Setup Mode, press **Enter** within 5 seconds.

Note: Connection fails if **Enter** is not pressed within 5 seconds.

The configuration settings display, followed by the setup menu options:

Figure 5-2. Setup Menu Options

```
Change Setup:
0 Server
1 Channel 1
2 Channel 2
3 Email
4 WLAN
5 Expert
6 Security
7 Factory defaults
8 Exit without save
9 Save and exit
Your choice ?
```

5. Select an option on the menu by entering the number of the option in the **Your choice ?** field and pressing **Enter**.

View the current configuration by pressing **Enter** from the Change Setup menu.

To enter a value for a parameter, type the value and press **Enter**. To confirm a current value, press **Enter** (without inputted parameters).

6. When finished, save the new configurations (**9 Save and exit**). The unit reboots.

Serial Port Access

To configure the unit through a serial connection:

1. Connect a console terminal or PC running a terminal emulation program to your unit's serial port. The default serial port settings are 9600 baud, 8 bits, no parity, 1 stop bit, no flow control.
2. Reset the WiPort unit by cycling the unit's power (turning the power off and back on). Immediately upon resetting the device, enter three lowercase **x** characters (**xxx**).

Note: The easiest way to enter Setup Mode is to hold down the **x** key at the terminal (or emulation) while resetting the unit. This must be done within three seconds of resetting the WiPort.

3. Upon connection, the following information displays:

Figure 5-3. MAC Address

```
MAC address 00204AFFFF30
Software version 05.3 (040129) WPT
Press Enter to go into Setup Mode
```

- To enter the Setup Mode, press **Enter** within 5 seconds.
*Note: Connection fails if **Enter** is not pressed within 5 seconds.*
The configuration settings display, followed by the setup menu options:

Figure 5-4. Setup Menu Options

```
Change Setup:
 0 Server
 1 Channel 1
 2 Channel 2
 3 Email
 4 WLAN
 5 Expert
 6 Security
 7 Factory defaults
 8 Exit without save
 9 Save and exit
Your choice ?
```

- Select an option on the menu by entering the number of the option in the **Your choice ?** field and pressing **Enter**.
View the current configuration by pressing **Enter** from the Change Setup menu.
To enter a value for a parameter, type the value and press **Enter**. To confirm a current value, press **Enter** (without inputted parameters).
- When finished, save the new configurations (**9 Save and exit**). The unit reboots.

Server Configuration

The unit's basic server (i.e. network) values display upon selecting **Server** (option **0** from the Change Setup menu). The following sections describe the configurable parameters within the Server configuration menu.

Set the IP Address

If DHCP is not used to assign IP addresses, enter it manually. The IP address must be set to a unique value in the network. Enter each octet and press Enter between each section inputted. The current value is displayed in parentheses.

```
IP Address : ( 0 ) ( 0 ) ( 0 ) ( 0 ) _
```

Set the Gateway IP Address

The gateway address, or router, allows communication to other LAN segments. The gateway address should be the IP address of the router connected to the same LAN segment as the unit. The gateway address must be within the local network.

The default is **N** (No), indicating the gateway address has not been set. To set the gateway address, type **Y**. At the prompt, enter the gateway address.

```
Set Gateway IP Address (N) ? Y
Gateway IP addr ( 0 ) ( 0 ) ( 0 ) ( 0 ) _
```

Set the Netmask

A netmask defines the number of bits taken from the IP address that are assigned for the host part.

```
Netmask: Number of Bits for Host Part (0=default) (0) _
```

The unit prompts for the number of host bits to be entered, then calculates the netmask, which displays in standard decimal-dot notation when the saved parameters are displayed (for example, 255.255.255.0).

Table 5-1. Standard IP Network Netmasks Representing Host Bits

Network Class	Host Bits	Netmask
A	24	255.0.0.0
B	16	255.255.0.0
C	8	255.255.255.0

Change Telnet Configuration Password

Setting the Telnet configuration password prevents unauthorized access to the setup menu via a Telnet connection to port 9999 or via web pages. The password must have 4 characters.

```
Change telnet config password (N) ? _
```

An enhanced password setting (for Telnet access only) of 16 characters is available under option **6 Security** from the Change Setup menu.

Note: A password is not required to access the Setup Mode window via a serial connection.

DHCP Name

If a DHCP server has automatically assigned the IP address and network settings, discover the unit by using the DeviceInstaller network search feature.

There are three methods for assigning DHCP names to the unit.

- ◆ **Default DHCP Name:** If the DHCP name is not changed and the IP is 0.0.0.0, then the DHCP name defaults to CXXXXXX (XXXXXX is the last 6 digits of the MAC address shown on the label on the bottom/side of the unit). For example, if the MAC address is 00-20-4A-12-34-56, then the default DHCP name is C123456.
- ◆ **Custom DHCP Name:** Create your own DHCP name. If using an IP address of 0.0.0.0, then the last option in Server configuration is **Change DHCP device name**. This option allows you to change the DHCP name to an alphanumeric name (LTX in the example).

```
Change DHCP device name (not set) ? (N) Y
Enter new DHCP device name : LTX
```

- ◆ **Numeric DHCP Name:** Change the DHCP name by specifying the last octet of the IP address. When using this method, the DHCP name is LTXYY where YY is the last octet of the IP address. If the IP address specified is 0.0.0.12, then the DHCP name is LTX12. This method only works with 2 digit numbers (0-99).

Channel 1 and Channel 2 Configuration

Select option **1 Channel 1** or **2 Channel 2** from the Change Setup menu to define how the serial port responds to network and serial communications. The following sections describe the configurable parameters within the Channel configuration menu.

Figure 5-5. Serial and Telnet Port Parameters

```
Baudrate <115200> ?
I/F Mode <4C> ?
Flow <00> ?
Port No <14009> ?
ConnectMode <C0> ?
Remote IP Address : <000> .<000> .<000> .<000>
Remote Port <0> ?
DisConnMode <00> ?
FlushMode <00> ?
DisConnTime <00:00> ? :
SendChar 1 <00> ?
SendChar 2 <00> ?
```

Baudrate

The unit and attached serial device, such as a modem, must agree on a speed or baud rate to use for the serial connection. Valid baud rates are 300, 600, 1200, 2400, 4800, 9600 (default), 19200, 38400, 57600, 115200, 230400, 460800, or 921600. The current value is displayed in parentheses.

```
Baudrate (9600) ? _
```

I/F (Interface) Mode

The Interface (I/F) Mode is a bit-coded byte entered in hexadecimal notation. The current value is displayed in parentheses.

```
I/F Mode (4C) ? _
```

The following table displays available I/F Mode options:

Table 5-2. Interface Mode Options

I/F Mode Option	7	6	5	4	3	2	1	0
RS-232C ⁽¹⁾							0	0
7 Bit					1	0		
8 Bit					1	1		
No Parity			0	0				
Even Parity			1	1				
Odd Parity			0	1				
1 stop bit	0	1						
2 stop bits ⁽¹⁾	1	1						

(1) 2 stop bits are implemented by the software. This might influence performance.

Note: If attempting to select an I/F Mode bit pertaining to RS-422/485, a “WARNING: RS-422/485 I/F Modes not supported” message displays.

The following table demonstrates some common I/F Mode settings:

Table 5-3. Common Interface Mode Settings

Common I/F Mode Setting	Binary	Hex
RS-232C, 8-bit, No Parity, 1 stop bit	0100 1100	4C
RS-232C, 7-bit, Even Parity, 1 stop bit	0111 1000	78

Flow

Flow control sets the local handshaking method for stopping serial input/output. The current value is displayed in parentheses.

```
Flow (0) ? _
```

Use the following table to select flow control options:

Table 5-4. Flow Control Options

Flow Control Option	Hex
No flow control	00
XON/XOFF flow control	01
Hardware handshake with RTS/CTS lines	02
XON/XOFF pass characters to host	05

Port Number

The **Port No** setting represents the source port number in TCP connections. It is the number that identifies the channel for remote initiating connections. The port number functions as the TCP/UDP source port number for outgoing packets. Packets sent to the unit with this port number are received to this channel. The port number selected is the Incoming TCP/UDP port and Outgoing TCP/UDP source port.

```
Port No (10001) ? _
```

The current value is displayed in parentheses. The default setting for Port 1 is 10001. The range is 1-65535, except for the following reserved port numbers:

Table 5-5. Reserved Port Numbers

Port Numbers	Reserved for
1 – 1024	Reserved
9999	Telnet setup
14000-14009	Reserved for Redirector
30704	Reserved (77F0h)
30718	Reserved (77FEh)

Note: It is recommended to **not** use the reserved port numbers for this setting as incorrect operation may result.

Use Port 0 for the outgoing local port to change with each connection. The port range is 50,000 to 59,999. Each subsequent connection increments the number by 1 (it wraps back around to 50,000).

Only use this automatic port increment feature to initiate a connection using TCP. Set the port to a non-zero value when the unit is in a passive mode or when using UDP instead of TCP.

Connect Mode

Connect Mode defines the unit's connection method and its reaction to incoming connections over the network. The current value is displayed in parentheses.

ConnectMode (C0) ? _

Enter Connect Mode options in hexadecimal notation:

Table 5-6. Connect Mode Options

Connect Mode Option	7	6	5	4	3	2	1	0
a) Incoming Connection								
Never accept incoming	0	0	0					
Accept with modem-control_in Active	0	1	0					
Always Accept	1	1	0					
b) Response								
Nothing (quiet)				0				
Character response (C=connect, D=disconnect, N=unreachable)				1				
c) Active Startup								
No active startup					0	0	0	0
With any character					0	0	0	1
With modem_control_in Active					0	0	1	0

Connect Mode Option	7	6	5	4	3	2	1	0
With a specific start character					0	0	1	1
Manual connection					0	1	0	0
Autostart					0	1	0	1
Hostlist	0	0	1	0				
d) Datagram Type								
Directed UDP					1	1	0	0
e) Modem Mode								
Full Verbose				1	0	1	1	0
Without Echo				0	0	1	1	0
Numeric modem result codes				1	0	1	1	1

a) Incoming Connection

Never Accept Incoming	Rejects all external connection attempts.
Accept with modem_control_in Active	Accepts external connection requests only when the modem_control_in input is asserted. Cannot be used with Modem Mode.
Always Accept	Accepts any incoming connection when a connection is not already established. Default setting.

b) Response

Character Response	A single character is transmitted to the serial port when there is a change in connection state: C = connected, D = disconnected, N = host unreachable. This option is overridden when the Active Start Modem Mode or Active Start Host List is in effect. Default setting is Nothing (quiet).
No Active Startup	Does <i>not</i> attempt to initiate a connection. Default setting.
With Any Character	Attempts to connect when any character is received from the serial port.
Accept with modem_control_in Active	Attempts to connect when the modem_control_in input changes from not asserted to asserted.
With a Specific Start Character	Attempts to connect when it receives a specific start character from the serial port. The default start character is carriage return.

<p>Manual Connection</p>	<p>Attempts to connect when directed by a command string received from the serial port. The first character of the command string must be a C (ASCII 0x43), and the last character must be either a carriage return (ASCII 0x0D) or a line feed (0x0A). No blanks or space characters may be in the command string. Between the first and last command string characters must be a full or partial destination IP address and can include a destination port number.</p> <p>The IP address must be in standard dot-decimal notation and may be a partial address, representing the least significant 1, 2, or 3 bytes of the remote IP address. The period is required between each pair of IP address numbers.</p> <p>If present, the port number must follow the IP address, must be presented as a decimal number in the range 1-65535, and must be preceded by a forward slash (ASCII 0x2F). The slash separates the IP address and the port number. If you omit the port number from a command string, the internally stored remote port number starts a connection.</p> <p>If a partial IP address is presented in a command string, it is interpreted to be the least significant bytes of the IP address and uses the internally stored remote IP address to provide the most significant bytes of the IP address. If the IP address entered is 0.0.0.0/0, the device server enters Monitor Mode.</p> <p>For example, if the remote IP address already configured in the unit is 129.1.2.3, then an example command string would be C3/7. (This would connect to 129.1.2.3 and port 7.) You may also use a different ending for the connection string. For example, C50.1/23 would connect you to 129.1.50.1 and port 23.</p>
---------------------------------	----------------------------------------------------------------------------------------------------------------------------------------------------------------------------------------------------------------------------------------------------------------------------------------------------------------------------------------------------------------------------------------------------------------------------------------------------------------------------------------------------------------------------------------------------------------------------------------------------------------------------------------------------------------------------------------------------------------------------------------------------------------------------------------------------------------------------------------------------------------------------------------------------------------------------------------------------------------------------------------------------------------------------------------------------------------------------------------------------------------------------------------------------------------------------------------------------------------------------------------------------------------------------------------------------------------------------------------------------------------------------------------------------------------------------------------------------------------------------------------------------------------------------------------------------------------------------------------------------------------------------------------------------------------------------------------------------------------------------------------------

Table 5-7. Manual Connection Address Example

Command String	Result if remote IP is 129.1.2.3 and remote port is 1234
C121.2.4.5/1	Complete override; connection is started with host 121.2.4.5, port 1
C5	Connects to 129.1.2.5, port 1234
C28.10/12	Connects to 129.1.28.10, port 12
C0.0.0.0/0	Connects to 129.1.28.10, port 12; enters Monitor Mode
Autostart (Automatic Connection)	The unit automatically attempts a connection to the remote IP address and port after booting up.

Hostlist	<p>If this option is set to True, the device server scrolls through the host list until it connects to the first available device listed in the host list table. Once it connects, the unit stops further attempts. If this connection fails, the unit continues to scroll through the table until it is able to connect to the next available IP address in the host list.</p> <p>Hostlist supports a minimum of 1 and a maximum of 12 entries. Each entry contains the IP address and the port number.</p> <p>The hostlist is disabled for Manual Mode and for Modem Mode. The unit will not accept a data connection from a remote device when the hostlist option is enabled.</p>
-----------------	---------------------------------------------------------------------------------------------------------------------------------------------------------------------------------------------------------------------------------------------------------------------------------------------------------------------------------------------------------------------------------------------------------------------------------------------------------------------------------------------------------------------------------------------------------------------------------------------------------------------------------------------------------------------------------------

Figure 5-6. Hostlist Example

```

Baudrate (9600) ?
I/F Mode (4C) ?
Flow (00) ?
Port No (10001) ?
ConnectMode (C0) ?25

Hostlist :

No Entry !

Change Hostlist ? (N) Y
01. IP address : (000) 172.(000) 19.(000) 0.(000) 1      Port :
(0) ?23
02. IP address : (000) 172.(000) 19.(000) 0.(000) 2      Port :
(0) ?3001
03. IP address : (000) 172.(000) 19.(000) 0.(000) 3      Port :
(0) ?10001
04. IP address : (000) .(000) .(000) .(000)

Hostlist :
01. IP : 172.019.000.001  Port : 00023
02. IP : 172.019.000.002  Port : 03001
03. IP : 172.019.000.003  Port : 10001

Change Hostlist ? (N) N

Hostlist Retrycounter (3) ?
Hostlist Retrytimeout (250) ?
DisConnMode (00) ?
FlushMode (00) ?
DisConnTime (00:00) ?:
SendChar 1 (00) ?
SendChar 2 (00) ?
    
```

To enable the hostlist:

1. Enter a **Connect Mode** of 0x20. The menu shows a list of current entries already defined in the product.
2. To delete, modify, or add an entry, select **Yes**. If entering an IP address of 0.0.0.0, that entry and all others after it are deleted.
3. After completing the hostlist, repeat the previous step if necessary to edit the hostlist again.

4. For **Retrycounter**, enter the number of times the Lantronix unit should try to make a good network connection to a hostlist entry that it has successfully ARPed. The range is 1-15, with the default set to 3.
5. For **Retrytimeout**, enter the number of seconds the unit should wait before failing an attempted connection. The time is stored as units of milliseconds in the range of 1-65535. The default is 250.

c) Datagram Type

Directed UDP	<p>When selecting this option, the prompt requests the Datagram type. Enter 01 for directed or broadcast UDP.</p> <p>When the UDP option is in effect, the unit uses UDP datagrams to send and receive data.</p>
---------------------	-------------------------------------------------------------------------------------------------------------------------------------------------------------------------------------------------------------------------

d) Modem Mode

In Modem (Emulation) Mode, the unit presents a modem interface to the attached serial device. It accepts AT-style modem commands, and handles the modem signals correctly.

Normally, there is a modem connected to a local PC and a modem connected to a remote machine. A user must dial from the local PC to the remote machine, accumulating phone charges for each connection. Modem Mode allows you to replace modems with WiPorts, and to use an Ethernet connection instead of a phone call. By not having to change communications applications, you avoid potentially expensive phone calls.

To select Modem Mode, set the Connect Mode to **C6** (no echo), **D6** (echo with full verbose), or **D7** (echo with 1-character response).

Note: *If the unit is in Modem Mode, and the serial port is idle, the unit can still accept network TCP connections to the serial port if Connect Mode is set to C6 (no echo), D6 (echo with full verbose), or D7 (echo with 1-character response).*

Without Echo	In Modem Mode, echo refers to the echo of all of the characters entered in command mode; it does <i>not</i> mean to echo data that is transferred. Quiet Mode (without echo) refers to the modem <i>not</i> sending an answer to the commands received (or displaying what was typed).
Full Verbose	The unit echoes modem commands and responds to a command with a message string shown in the table below.
1-Character Response	The unit echoes modem commands and responds to a command with a single character response.

Table 5-8. Modem Mode Messages

Message	Meaning
Full Verbose	
OK	Command was executed without error.

Message	Meaning
CONNECT	A network connection has been established.
NO CARRIER	A network connection has been closed.
RING n.n.n.n.	A remote device, having IP address n.n.n.n, is connecting to this device.
1-Character Response	
0	OK
1	Connected
2	Ring
3	No Carrier
4	Error

Received commands must begin with the two-character sequence **AT** and be terminated with a carriage return character.

The unit ignores any character sequence received *not* starting with AT, and only recognizes and processes single AT-style commands. The unit treats compound AT commands as unrecognized commands.

If the Full Verbose option is in effect, the unit responds to an unrecognized command string that is otherwise formatted correctly (begins with AT and ends with carriage return) with the *OK* message and takes no further action.

If the 1-Character Response option is in effect, the unit responds to an unrecognized command string that is otherwise formatted correctly with *OK* and takes no further action.

When an active connection is in effect, the unit transfers data and does not process commands received from the serial interface.

When a connection is terminated or lost, the unit reverts to command mode.

When an active connection is in effect, the unit terminates the connection if it receives the following sequence from the attached serial device:

- ◆ No serial data is received for one second.
- ◆ The character sequence +++ is received, with no more than one second between each two characters.
- ◆ No serial data is received for one second after the last + character. At this time, the unit responds affirmatively per the selected echo/response mode.
- ◆ The character string **ATH** is received, terminated with a carriage return. The unit responds affirmatively according to the selected echo/response mode and drops the network connection. The serial interface reverts to accepting command strings.

If this sequence is not followed, the unit remains in data transfer mode.

Table 5-9. Modem Mode Commands

Modem Mode Command	Function
ATDTx.x.x.x,pppp or ATDTx.x.x.x/pppp	Makes a connection to an IP address (x.x.x.x) and a remote port number (pppp).

Modem Mode Command	Function
ATDTx.x.x.x	Makes a connection to an IP address (x.x.x.x) and the remote port number defined within the unit.
ATD0.0.0.0	Forces the unit into Monitor Mode. Uses remote IP address and port settings to initiate a connection.
ATD or ATDT	Forces the unit into Monitor Mode. Uses remote IP address and port settings to initiate a connection.
ATDx.x.x.x	Makes a connection to an IP address (x.x.x.x) and the remote port number defined within the unit.
ATH	Hangs up the connection (Entered as +++ ATH).
ATS0=n	Enables or disables connections from the network going to the serial port. n=0 disables the ability to make a connection from the network to the serial port. n=1-9 enables the ability to make a connection from the network to the serial port. n>9 is invalid.
ATEn	Enables or disables character echo and responses. n=0 disables character echo and responses. n=1 enables character echo and responses.
ATVn	Enables 1-character response or full verbose. n=0 enables 1-character response. n=1 enables full verbose.

Note: The unit recognizes these AT commands as single commands such as ATE0 or ATV1; it does not recognize compound commands such as ATE0V.

Remote IP Address

This is the destination IP address used with an outgoing connection. The current value is displayed in parentheses.

```
Remote IP Address : ( 0 ) ( 0 ) ( 0 ) ( 0 ) _
```

Note: This option is not displayed when Hostlist is enabled from the ConnectMode prompt (see [Connect Mode](#) on page 5-7 for more information).

Remote Port

Set the remote TCP port number for the unit to make outgoing connections. This parameter defines the port number on the target host to which a connection is attempted.

To connect an ASCII terminal to a host using the unit for login purposes, use the remote port number 23 (Internet standard port number for Telnet services).

```
Remote Port ( 0 ) ? _
```

Note: This option is not displayed when Hostlist is enabled from the ConnectMode prompt (see [Connect Mode](#) on page 5-7 for more information).

DisConnMode

Disconnect Mode (DisConnMode) determines the conditions under which the unit will cause a network connection to terminate. The current value is displayed in parentheses.

```
DisConnMode ( 0 ) ? _
```

In DisConnMode, modem_control_in either drops the connection or is ignored. The following table displays the available input options:

Table 5-10. Disconnect Mode Options

Disconnect Mode Option	7	6	5	4	3	2	1	0
Disconnect with modem_control_in drop ⁽⁶⁾	1							
Ignore modem_control_in	0							
Telnet mode and terminal type setup ⁽¹⁾		1						
Channel (port) password ⁽²⁾				1				
Hard disconnect ⁽³⁾					0			
Disable hard disconnect					1			
State LED off with connection ⁽⁴⁾								1
Disconnect with EOT (^D) ⁽⁵⁾			1					

- (1) The WiPort sends the "Terminal Type" upon an outgoing connection.
- (2) A password is required for a connection to the serial port from the network.
- (3) The TCP connection closes even if the remote site does not acknowledge the disconnection.
- (4) When there is a network connection to or from the serial port, the state LED turns off instead of blinking.
- (5) When **Ctrl D** or Hex 04 is detected, the connection is dropped. Both Telnet mode and Disconnect with EOT must be enabled for Disconnect with EOT to function properly. **Ctrl D** is only detected going from the serial port to the network.
- (6) When modem_control_in transitions from a high state to a low state, the network connection to or from the serial port drops.

Flush Mode

The FlushMode (buffer flushing) parameter controls line handling and network buffers with connection startup and disconnect.

```
FlushMode ( 0 ) ? _
```

Select between two different packing algorithms (the current configuration is displayed within the parentheses). Available Flush Mode options are:

Table 5-11. Flush Mode Options

Function	7	6	5	4	3	2	1	0
Input Buffer (Serial to Network)								
Clear with a connection that is initiated from the device to the network				1				
Clear with a connection initiated from the network to the device			1					

Function	7	6	5	4	3	2	1	0
Clear when the network connection to or from the device is disconnected		1						
Output Buffer (Network to Serial)								
Clear with a connection that is initiated from the device to the network								1
Clear with a connection initiated from the network to the device							1	
Clear when the network connection to or from the device is disconnected						1		
Alternate Packing Algorithm (Pack Control)								
Enable	1							

Pack Control

The packing algorithm defines how and when packets are sent to the network. The standard algorithm is optimized for applications in which the unit is used in a local environment. The alternate packing algorithm minimizes the packet count on the network and is especially useful in applications in a routed Wide Area Network (WAN). Adjusting parameters in this mode can economize the network data stream.

Pack control settings are enabled in Flush Mode. Set this value to 00 if specific functions are not needed.

Table 5-12. Pack Control Options

Option	7	6	5	4	3	2	1	0
Packing Interval								
Interval: 12ms							0	0
Interval: 52ms							0	1
Interval: 250ms							1	0
Interval: 5sec							1	1
Trailing Characters								
None					0	0		
One					0	1		
Two					1	0		
Send Characters								
2-Byte Send Character Sequence				1				
Send Immediately After Send chars			1					

Packing Interval: Packing Interval defines how long the unit should wait before sending accumulated characters. This wait period is between successive network segments containing data. For alternate packing, the default interval is 12 ms.

Trailing Characters: In some applications, CRC, Checksum, or other trailing characters follow the end-of-sequence character; this option helps to adapt frame transmission to the frame boundary.

Send Characters:

- ◆ If 2-Byte Send Character Sequence is enabled, the unit interprets the sendchars as a 2-byte sequence; if this option is not enabled, the unit interprets them independently.
- ◆ If Send Immediately After Characters is not set, any characters already in the serial buffer are included in the transmission after a "transmit" condition is found. If this option is set, the unit sends immediately after recognizing the transmit condition (sendchar or timeout).

Note: A transmission might occur if status information needs to be exchanged or an acknowledgment needs to be sent.

DisConnTime (Inactivity Timeout)

Use this parameter to set an inactivity timeout. The unit drops the connection if there is no activity on the serial line before the set time expires. Enter time in the format **mm:ss**, where m is the number of minutes and s is the number of seconds.

```
DisConnTime (0: 0) ?:
```

To disable the inactivity timeout, enter **00:00**. Range is 0 (disabled) to 5999 seconds (99 minutes, 59 seconds). The default is 0.

SendChar 1 and SendChar2

Enter up to two characters in hexadecimal representation.

```
SendChar 1 ( 0) ? _  
SendChar 2 ( 0) ? _
```

If the unit receives a character on the serial line that matches one of these characters, it sends the character immediately, along with any awaiting characters, to the TCP connection. This action minimizes the response time for specific protocol characters on the serial line (for example, ETX, EOT). Setting the first SendChar to **00** disables the recognition of the characters. Alternatively, the unit can interpret two characters as a sequence (see [Pack Control](#) on page 5-15).

Telnet Terminal Type

This parameter displays only if the terminal type option is enabled in Disconnect Mode. If this option is enabled, use the terminal name for the Telnet terminal type. Enter only one name.

If the terminal type option is enabled, the unit also reacts to the EOR (end of record) and binary options, which can be used for applications such as terminal emulation to UNIX hosts.

Channel (Port) Password

This parameter appears only if the channel (port) password option is enabled in Disconnect Mode. If the option is enabled, set a password on the serial port.

Email Configuration

Note: Change these settings via Telnet or serial connections only, not on the Web-Manager. These settings are also configurable through DeviceInstaller.

The unit sends an Email to multiple recipients when a specific trigger event occurs. There are three separate triggers, based on any combination of the configurable pins (PIO) when selected as user I/O functions. Optionally, use a two-byte serial string to initiate a trigger. To configure Email configuration settings, select option **3 Email** from the Change Setup menu.

Figure 5-7. Email Settings

```

*** E-mail
Mail server: 0.0.0.0
Unit      :
Domain    :
Recipient 1:
Recipient 2:
- Trigger 1
Serial trigger input: disabled
  Channel: 1
  Match: 00
  Trigger input1: X
  Trigger input2: X
  Trigger input3: X
Message :
Priority: L
Min. notification interval: 1 s
Re-notification interval : 0 s
- Trigger 2
Serial trigger input: disabled
  Channel: 1
  Match: 00
  Trigger input1: X
  Trigger input2: X
  Trigger input3: X
Message :
Priority: L
Min. notification interval: 1 s
Re-notification interval : 0 s
- Trigger 3
Serial trigger input: disabled
  Channel: 2
  Match: 00
  Trigger input1: X
  Trigger input2: X
  Trigger input3: X
Message :
Priority: L
Min. notification interval: 1 s
Re-notification interval : 0 s
Server (0.0.0.0) ? ( 0) _
    
```

Mail Server

Enter the IP address of the mail server. Enter each 3-digit section and press Enter between each section inputted. The current value is displayed in parentheses.

```
Mail Server (0.0.0.0) ? ( 0) _
```

Unit Name

Enter the username used by the WiPort to send Email messages. The current value is displayed in parentheses.

```
Unit name ( ) ? _
```

Domain Name

Enter the Email server's domain name. The current value is displayed in parentheses.

```
Domain name ( ) ? _
```

Recipient 1

Enter the full Email address of the trigger email recipient. The current value is displayed in parentheses.

```
Recipient 1 ( ) ? _
```

Recipient 2

Enter the full Email address of the trigger email recipient. The current value is displayed in parentheses.

```
Recipient 2 ( ) ? _
```

Trigger 1

A trigger event occurs when the unit receives the specified trigger input as a result of a specified combination of conditions on the configurable pins.

```
Enable serial trigger input (N) ?  
Trigger input1 [A/I/X] (X) ?  
Trigger input1 [A/I/X] (X) ?  
Trigger input1 [A/I/X] (X) ?  
Message ( ) ?  
Priority (L) ?  
Minimum notification interval (1 s) ?  
Re-notification interval (0 s) ?
```

Set the configurable pins to A = Active, I = Inactive, or X = Don't Care. Active can mean Active Low or Active High. If the configurable pins are all set to X (Don't Care), then they are disabled. If both the serial sequence and the configurable pins are disabled, the trigger is disabled.

To change the configurable pins' settings, you must use DeviceInstaller or send setup records to Port 77FE.

The Message is the subject line of the trigger event Email to the specified recipient(s).

The Priority is the priority level for the trigger even Email. Enter **L** for normal priority or **H** for high priority.

The Minimum notification interval is the minimum time allowed between individual triggers. If a trigger event occurs within the minimum interval since the last trigger, it is ignored.

The Re-notification interval indicates the time interval in which a new Email message is sent to the recipient(s) when a single trigger event remains active.

Trigger 2

Refer to [Trigger 1](#) for details on completing these fields.

Note: Each trigger is independent of the others. Each condition within an individual trigger must be met before the unit will send the Email.

Trigger 3

Refer to [Trigger 1](#) for details on completing these fields.

Note: Each trigger is independent of the others. Each condition within an individual trigger must be met before the unit will send the Email.

WLAN Settings

Without adequate protection, a wireless LAN is susceptible to access by unauthorized users. As such, WiPort includes the Wired Equivalent Privacy (WEP) encryption standard as an additional means of security.

To modify WLAN and WEP settings, select **4 WLAN** from the Change Setup menu.

Enable WLAN

The current value is displayed in parentheses. By default, WLAN is enabled on WiPort.

```
Enable WLAN (Y) ? _
```

Find Network Name

Enter the name of the network in which the WiPort unit resides. The current value is displayed in parentheses.

```
Find network name (LTRX_IBSS) ? _
```

Enable Ad Hoc Network Creation

The current value is displayed in parentheses. By default, Ad Hoc network creation is enabled on WiPort.

```
Enable Ad Hoc network creation (Y) ?
Name (LTRX_IBSS) ?
Country 0=US, 1=FR, 2=JP, 3=Other (0) ?
Channel (11) ?
```

Enter Y to enable Ad Hoc network creation and display configurable parameters:

1. At the **Name** prompt, enter the network name as text and hit **Enter**. The default name displays in parentheses.
2. Select a **Country** by entering 0, 1, or 3. By default, 0 (United States) is selected. Press **Enter**.
3. At the **Channel** prompt, enter the WiPort's channel setting.

Security

As an additional security measure, enable WEP on the WiPort. The current value is displayed in parentheses. By default, WEP is disabled on WiPort.

```
Security 0=none, 1=WEP (0) ? _
```

Data Rate

WiPort permits the control of the transmission rate. The default is a data rate up to 11Mbps. The current value is displayed in parentheses.

```
Data rate, Only : 0=1, 1=2, 2=5.5, 3=11 Mbps or  
Up to: 4=2, 5=5.5, 6=11 Mbps (6) ?
```

Power Management

Power management reduces the overall power consumption of the WiPort unit. Enabling power management increases the response time. The current value is displayed in parentheses.

```
Enable power management (N) ? _
```

Expert Settings

Note: Change these settings via Telnet or serial connections only.

Caution: Only an expert should change these parameters. These changes hold serious consequences.

TCP Keepalive Time

TCP Keepalive time defines how many seconds the unit waits during a silent connection before checking whether the currently connected network device is still on the network. If the unit does not receive a response, it drops that connection.

```
TCP Keepalive time in s (1s - 65s; 0s=disable): (45)? _
```

ARP Cache Timeout

When the unit communicates with another device on the network, it adds an entry into its ARP table. ARP Cache timeout defines the number of seconds (1-600) the unit waits before timing out this table.

```
ARP Cache timeout in s (1s - 65s; 0s=disable): (600)? _
```

Security Settings

Change security settings via Telnet or serial connections only, not on the Web-Manager.

Note: As recommended, set security over the dedicated network or over the serial setup. If the parameters are set over the network (Telnet 9999), someone else could capture these settings.

Caution: Disabling both Telnet Setup and Port 77FE prevent users from accessing the setup menu from the network.

Disable SNMP

For security purposes, disable SNMP (if required) on the WiPort unit. The current setting is displayed in parentheses.

```
Disable SNMP (N) ? _
```

SNMP Community Name

The SNMP Community Name is a required field for NMS to read or write to a device. Enter a string of 1 to 13 characters.

```
SNMP Community Name (public): _
```

The default entry is **public**. The current value is displayed in parentheses.

Disable Telnet Setup

Note: If this option is disabled, note that disabling both Telnet Setup and Port 77FE prevents users from accessing the setup menu from the network.

This setting defaults to the N (No) option. The Y (Yes) option disables access to Setup Mode by Telnet (port 9999). It only allows access locally via the web pages and the serial port of the unit.

```
Disable Telnet Setup (N) ? _
```

Disable TFTP Firmware Upgrade

This setting defaults to the N (No) option. The Y (Yes) option disables TFTP for network firmware upgrades.

```
Disable TFTP Firmware Update (N) : _
```

With this option, download firmware upgrades over the serial port using DeviceInstaller's Recover Firmware procedure (see [Using TFTP: Command Line Interface](#))

To [download](#) new firmware from a computer, enter the following from a TFTP command line interface:

```
tftp -i <ip address> put <local filename> <destination  
file name>
```

The following examples demonstrate the TFTP command sequence to download the .rom file, the .fwx file, and the .cob file:

```
tftp -i 192.168.1.111 put wpt540.rom W1  
tftp -i 192.168.1.111 put H2_FW_200.fwx FWX1  
tftp -i 192.168.1.111 put wpt_wm110.cob WEB1>
```

Recovering the Firmware Using the Serial Port on page [8-2](#)).

Disable Port 77FE (Hex)

Note: Disabling both Telnet Setup and Port 77FE prevents users from accessing the setup menu from the network.

Port 77FE is used by DeviceInstaller, Web-Manager, and custom programs to configure the unit remotely. If required, disable this capability for security purposes.

```
Disable Port 77FEh (N) ? _
```

The default setting is the N (No) option, which enables remote configuration. As a result, configure the unit by using DeviceInstaller, web pages, Telnet, or serial configuration.

The Y (Yes) option disables remote configuration and web sites.

Note: The Y (Yes) option disables many of the GUI tools for configuring the unit, including the embedded Web-Manager tool.

Disable Web Server

The Y (Yes) option disables the web server. This setting defaults to the N (option).

```
Disable Web Server (N) ? _
```

Disable Web Setup

The Y (Yes) option disables configuration via the Web-Manager. This setting defaults to the N (option).

```
Disable Web Setup (N) ? _
```

Disable ECHO Ports

This setting controls whether the serial port echoes characters it receives. The current value is displayed in parentheses.

```
Disable ECHO ports (Y) ? _
```

Enable Enhanced Password

This setting defaults to the N (option), which permits a 4-character password protecting Setup Mode by means of Telnet and web pages.

```
Enable Enhanced Password (Y) ? _
```

The Y (Yes) option allows an extended security password of 16-characters for protecting Telnet access.

Disable Port 77F0 (Hex)

Port 77F0 is a setting that allows a custom application to query or set the eleven WiPort configurable pins when they are functioning as general purpose I/O (GPIO). Disable this capability, if desired, for security purposes.

```
Disable Port 77F0h ? _
```

The default setting, the N (No) option, enables GPIO control. The Y (Yes) option disables the GPIO control interface.

Factory Defaults

Select **7 Factory Defaults** from the Change Setup menu to reset the unit's Channel 1 configuration, Channel 2 configuration, E-mail settings, and Expert settings to the factory default settings. The server configuration settings for IP address, gateway IP address, and netmask remain unchanged. The configurable pins' settings also remain unchanged. The specific settings that this option changes are listed below:

Channel 1 Configuration

Baudrate	9600
I/F Mode	4C (1 stop bit, no parity, 8 bit, RS-232C)
Port No	10001
Connect Mode	C0 (always accept incoming connection; no active connection startup)
Hostlist Retry Counter	3
Hostlist Retry Timeout	250 (msec)
Send Character	0x0D (CR)
All other parameters	0

Channel 2 Configuration

Baudrate	9600
I/F Mode	4C (1 stop bit, no parity, 8 bit, RS-232C)
Port No	10002
Connect Mode	C0 (always accept incoming connection; no active connection startup)
Hostlist Retry Counter	3
Hostlist Retry Timeout	250 (msec)
Send Character	0x0D (CR)
All other parameters	0

WLAN Settings

Enable WLAN	(Y) Yes
Find Network Name	LTRX_IBSS
Enable Ad Hoc Network Creation	(Y) Yes
Name	LTRX_IBSS
Country	(0) United States
Channel	11
Security	(0) None
Data Rate	11Mbps

Expert Settings

TCP keepalive	45 (seconds)
ARP cache timeout	600 (seconds)

Security Settings

Disable SNMP	(N) No
SNMP Community Name	public
Disable Telnet Setup	(N) No
Disable TFTP Firmware Update	(N) No
Disable Port 77FEh	(N) No
Disable Web Server	(N) No
Disable ECHO ports	(Y) Yes
Enable Enhanced password	(N) No
Disable Port 77F0h	(N) No

Email Settings

Trigger Priority	L
Min. notification interval	1 second
All other parameters	0 (e.g. Email notification and triggers are disabled)

Exit Configuration Mode

To exit setup mode:

- ◆ Select option **9 Save and exit** from the Change Setup menu to save all changes and reboot the device. All values are stored in nonvolatile memory.
or
- ◆ Select option **8 Exit without save** from the Change Setup menu to exit the configuration mode without saving any changes or rebooting,

6: Configurable Pins

This chapter includes the following topics:

Topic	Page
GPIO Pins	6-1
Control Protocol	6-1
Examples	6-4

GPIO Pins

The WiPort has eleven pins configurable for General Purpose I/O (GPIO).

Note: *In addition, configure these pins for serial port control lines, such as CTS, RTS, modem_control_in, and DCD, and diagnostic outputs to LED, using DeviceInstaller.*

Use these GPIO pins to control devices such as relays, servers, lights, monitor switches, sensors, and even processes such as data transfer.

Set the functions for the three pins independently and in any combination. The initial directions (input/output) and active levels (low or high active) at boot up can also be configured through 77FE, for example, by using DeviceInstaller.

This chapter describes how the directions, active levels, and states can be dynamically controlled and probed through special port 77F0.

Features:

- ◆ TCP and UDP can be used.
- ◆ The protocol supports up to 32 GPIO for future products.
- ◆ Function configuration can be retrieved.
- ◆ Input or output selection can be retrieved and controlled.
- ◆ Active low or high selection can be retrieved and controlled.
- ◆ Active or inactive selection can be retrieved and controlled.
- ◆ 77F0 can be disabled.

Every change of state (active/inactive) requires a command over TCP or UDP, and thus is not very fast. If you use this port for data transfer, the throughput is low, usually up to 1Kbps.

Control Protocol

The GPIO control protocol is a simple, proprietary protocol, which is described below.

Guidelines

The GPIO control protocol is described from the PC side. *Send* means from PC to WiPort. *Response* comes from WiPort to PC.

Configurable Pins

The protocol allows for control of up to 32 GPIOs. How many are actually available depends on the product. WiPort has only three.

The parameters are four bytes long and represent GPIOs 0-31, with GPIO0 in bit 0 of the first byte (Little Endian). Parameter bits for configurable pins not configured as GPIOs are undefined for **Get** commands and ignored on **Set** commands.

Every command consists of nine bytes: one command type of one byte and two parameters of four bytes each.

	Command	Parameter 1								Parameter 2							
Byte	0	1		2		3		4		5		6		7		8	
Pin Number		0	7	8	15	16	23	24	31	0	7	8	15	16	23	24	31

On some commands, one or all parameters are ignored.

For UDP, command type and parameters need to be in the same datagram.

Responses to valid commands are always five bytes long, consisting of the returned command byte and as parameters in the current or updated values. In case of an invalid command, only one byte with value 0FFh is returned.

	Command	Parameter 1							
Byte	0	1		2		3		4	
Pin Number		0	7	8	15	16	23	24	31

When sending a command (TCP and UDP), wait for the response before sending the next command.

Commands

Byte 0 Command Types

10h	Get functions
11h	Get directions (input or output)
12h	Get active levels (high active or low active)
13h	Get current states (active or not active)
19h	Set directions
1Ah	Set active levels
1Bh	Set current states

As you can see, there is no **Set functions** command. Since the pin's function depends on the hardware in which the WiPort is embedded, that configuration is only allowed via 77FE. Settings changed by any of the **Set** commands are not stored and are lost when the unit is powered down or rebooted.

Command 10h, Get Functions

Send:	
	No parameters
Response:	
	1 parameter
	Bytes 1-4: Functions
Bit X	1 means general purpose IO available to the user.

		0 means dedicated function (e.g., serial flow control, diagnostics) for configurable pin X.
--	--	---------------------------------------------------------------------------------------------

Command 11h, Get Directions

Send:		
	No parameters	
Response:		
	1 parameter	
	Bytes 1-4: Directions	
	Bit X	1 means GPIO X is an output.
		0 means it is an input.

Command 12h, Get Active Levels

Send:		
	No parameters	
Response:		
	1 parameter	
	Bytes 1-4: Active levels	
	Bit X	1 means GPIO X is active low (0V when active, 3.3V when inactive).
		0 means it is active high (3.3V when active, 0V when inactive).

Command 13h, Get Current States

Send:		
	No parameters	
Response:		
	1 parameter	
	Bytes 1-4: States	
	Bit X	1 means GPIO X is active
		0 means it is inactive.

Command 19h, Set Directions

Send:		
	2 parameters	
	Bytes 1-4: Mask	
	Bit X	1 means the direction for GPIO X will be updated with the value in the second parameter.
		0 means the direction for that GPIO will not change.
	Bytes 5-8: New Directions	
	Bit X	1 means GPIO X will become an output.
		0 means it will become an input.
Response:		
	1 parameter	

	Bytes 1-4: The updated directions
--	-----------------------------------

Command 1Ah, Set Active Levels

Send:

	2 parameters
	Bytes 1-4: Mask
Bit X	1 means the direction for GPIO X will be updated with the value in the second parameter.
	0 means the active type for that GPIO will not change.
	Bytes 5-8: New Active Levels
Bit X	1 means GPIO X will become active low.
	0 means it will become active high.

Response:

	1 parameter
	Bytes 1-4: Updated active levels

Command 1Bh, Set States

Send:

	2 parameters
	Bytes 1-4: Mask
Bit X	1 means the state for GPIO X will be updated with the value in the second parameter.
	0 means the state for that GPIO will not change.
	Bytes 5-8: New States
Bit X	1 means GPIO X will become active.
	0 means it will become inactive.

Response:

	1 parameter
	Bytes 1-4: Updated states

Examples

Example 1: PC sends command 10h to find out which configurable pins are available as GPIO.

PC -> WiPort: 10h, 00h, 00h, 00h, 00h, 00h, 00h, 00h, 00h

WiPort -> PC: 10h, 03h, 00h, 02h, 00h

Command details:

10h = command 10h

00h, 00h, 00h, 00h = ignored

00h, 00h, 00h, 00h = ignored

Response details:

10h = response to command 10h

03h, 00h, 02h, 00h =

bits 0, 1, and 9 are 0 → CP0, CP1, and CP9 are configured as GPIOs (i.e. GPIO0, GPIO1, GPIO9).

bits 2 to 8 and 10 are 0 → configured for a special function and are unavailable for control or monitoring by the user.

Example 2: PC sends command 1Bh to change the current states of GPIO 0 and 1 (assuming they are configured as outputs).

PC -> WiPort: 1Bh, 01h, 00h, 02h, 00h, 01h, 00h, 00h, 00h

WiPort -> PC: 1Bh, 03h, 00h, 00h, 00h

Command details:

1Bh = command 1Bh

01h, 00h, 00h, 00h = the mask that determines which GPIOs will be changed.

Bit 0 and 9 are 1 → GPIO0 and GPIO9 will be changed.

bit 1 is 0 → GPIO1 will remain the same.

01h, 00h, 00h, 00h = the new states

bit 0 is 1 → GPIO0 will become 1.

bit 1 is ignored since it is masked out.

bit 0 is 0 → GPIO9 will become 0..

Response details:

1Bh = response to command 1Bh

03h, 00h, 00h, 00h =

bit 0 is 1 → GPIO0 = 1

bit 1 is 1 → GPIO1 = 1

bit 9 is 0 → GPIO9 = 0

7: Monitor Mode

Monitor Mode is a command-line interface used for diagnostic purposes.

This chapter includes the following topics:

Topic	Page
Entering Monitor Mode via the Serial Port	7-1
Entering Monitor Mode via the Network Port	7-1
Monitor Mode Commands	7-2

There are two ways to enter Monitor Mode: locally via the serial port or remotely via the network.

Entering Monitor Mode via the Serial Port

To enter Monitor Mode locally:

1. Follow the same steps used for setting the serial configuration parameters (see [Serial Port Access](#) on page 5-2).
 2. Instead of typing three **x** keys, however:
 - a) Type **zzz** to enter Monitor Mode with network connections.
 - b) Type **yyy** to enter Monitor Mode without network connections.
- A **0>** prompt indicates that you have successfully entered Monitor Mode.

Entering Monitor Mode via the Network Port

To enter Monitor Mode using a Telnet connection:

1. Establish a Telnet session to the configuration port (9999). The following message appears:

```
MAC address 00204A0113A3
Software version 05.3 (040129) WPT
Press Enter to go into Setup Mode
```

2. Type **M** (upper case).
A **0>** prompt indicates that you have successfully entered Monitor Mode.

Monitor Mode Commands

The following commands are available in Monitor Mode.

Note: All commands must be in capital letters.

Table 7-1. Monitor Mode Commands

Command	Command Name	Function
VS	Version	Queries software header record (16 bytes) of unit.
GC	Get Configuration	Gets configuration of unit as hex records (120 bytes).
SC	Send Configuration	Sets configuration of unit from hex records.
PI x.x.x.x	Ping	Pings unit with IP address x.x.x.x to check device status.
AT	ARP Table	Shows the unit's ARP table entries.
TT	TCP Connection Table	Shows all incoming and outgoing TCP connections.
NC	Network Connection	Shows the unit's current IP address.
RS	Reset	Resets the unit.
QU	Quit	Exits diagnostics mode.
G0, G1,,Ge, Gf	Get configuration from memory page	Gets a memory page of configuration information from the device.
S0, S1,.....,Se, Sf	Set configuration to memory page	Sets a memory page of configuration information on the device.

Responses to some of the commands are given in Intel Hex format.

Note: Entering any of the commands listed above generates one of the following command response codes:

Table 7-2. Command Response Codes

Response	Meaning
0>	OK; no error
1>	No answer from remote device
2>	Cannot reach remote device or no answer
8>	Wrong parameter(s)
9>	Invalid command

8: Updating Firmware

This chapter explains how to obtain and update the unit's firmware. It includes the following topics:

Topic	Page
Obtaining Firmware	8-1
Reloading Firmware	8-1

Obtaining Firmware

Obtain the most up-to-date firmware and release notes for the unit from the Lantronix web site (www.lantronix.com) or by using anonymous FTP ([ftp.lantronix.com/pub](ftp://ftp.lantronix.com/pub)).

Reloading Firmware

There are several ways to update the unit's internal operational code (*.ROM and *.FWX): via DeviceInstaller (the preferred way), via TFTP, or via the serial port. You can also update the unit's internal Web interface (*.COB) via TFTP or DeviceInstaller.

Here are typical names for those files. Check the Lantronix web site for the latest versions and release notes.

Table 8-1. Firmware Files

ROM File	FWX File	COB
WPTxxx.ROM	H2_FW_200.FWX	WPT_WNxxx.COB (Web-Manager)

Please refer to the DeviceInstaller User Guide for information about reloading firmware using DeviceInstaller. The other methods are discussed below:

Using TFTP: Graphical User Interface

To download new firmware from a computer:

3. Use a TFTP client to put a binary file to the unit (*.ROM to upgrade the unit's internal operational code and *.COB to upgrade its internal Web interface).

Note: TFTP requires the **.ROM** (binary) version of the unit's internal operational code.

4. In the **TFTP server** field, enter the IP address of the unit being upgraded.
5. Select **Upload** operation and **Binary** format.
6. Enter the full path of the firmware file in the **Local file name** field.
7. In the **Remote file name** field, enter the **current** internal operational code or **WEB1** to **WEB28** for the internal Web interface with 2MB flash, or **WEB1** to **WEB28** or **WEB60** for 4MB flash. (For WiPort, **W1** = ROM file. **FWX1** = FWX file.)

- Click the **Upload Now** button to transfer the file to the unit. The unit performs a power reset after the firmware has been loaded and stored.

Using TFTP: Command Line Interface

To download new firmware from a computer, enter the following from a TFTP command line interface:

```
tftp -i <ip address> put <local filename> <destination  
file name>
```

The following examples demonstrate the TFTP command sequence to download the .rom file, the .fwx file, and the .cob file:

```
tftp -i 192.168.1.111 put wpt540.rom W1  
tftp -i 192.168.1.111 put H2_FW_200.fwx FWX1  
tftp -i 192.168.1.111 put wpt_wm110.cob WEB1>
```

Recovering the Firmware Using the Serial Port

If for some reason the firmware is damaged, you can recover the firmware file by using the serial port to download the *.ROM file.

- Start DeviceInstaller.
- From the **Tools** menu, select **Advanced/Recover Firmware**. The Recover Firmware window displays.
- Enter the com port on your PC and the location of the firmware file. The Device Model should indicate WiPort.
- Click **OK** to download the file.

Note: See also *Recovering Firmware in the DeviceInstaller User Guide*.

9: Troubleshooting

This chapter discusses how you can diagnose and fix errors quickly without having to contact a dealer or Lantronix. It helps to connect a terminal to the serial port while diagnosing an error to view summary messages that may be displayed. When troubleshooting, always ensure that the physical connections (power cable, network cable, and serial cable) are secure.

Note: Some unexplained errors might be caused by duplicate IP addresses on the network. Make sure that your unit's IP address is unique.

When troubleshooting the following problems, make sure that the WiPort is powered up. Confirm that you are using a good network connection.

This chapter includes the following topics:

Topic	Page
Problems and Error Messages	9-1
Technical Support	9-4

Problems and Error Messages

Problem/Message	Reason	Solution
When you issue the ARP -S command in Windows, <i>The ARP entry addition failed: 5</i> message displays.	Your currently logged-in user does not have the right to use this command on this PC.	Have someone from your IT department log you in with sufficient rights.
When you attempt to assign an IP address to the unit by the ARP method and Telnet to the device server through port 1, the connection fails.	When you Telnet to port 1 on the device server, you are only assigning a temporary IP address. When you Telnet into port 9999 and do not press Enter quickly, the device server reboots, causing it to lose the IP address.	Telnet back to Port 1. Wait for it to fail, then Telnet to port 9999 again. Make sure you press Enter within 5 seconds.
When you Telnet to port 9999, the Press Enter to go into Setup Mode message displays. However, nothing happens when you press Enter , or your connection is closed.	You did not press Enter quickly enough. You only have 5 seconds to press Enter before the connection is closed.	Telnet to port 9999 again, but press Enter as soon as you see the <i>Press Enter to go into Setup Mode</i> message.

Problem/Message	Reason	Solution
<p>When you Telnet to port 1 to assign an IP address to the device server, the Telnet window does not respond for a long time.</p>	<p>You may have entered the Ethernet address incorrectly with the ARP command.</p>	<p>Confirm that the Ethernet address that you entered with the ARP command is correct. The Ethernet address may only include numbers 0-9 and letters A-F. In Windows and usually in Unix, the segments of the Ethernet address are separated by dashes. In some forms of Unix, the Ethernet address is segmented with colons.</p>
	<p>The IP address you are trying to assign is not on your logical subnet.</p>	<p>Confirm that your PC has an IP address and that it is in the same logical subnet that you are trying to assign to the device server.</p>
	<p>The device server may not be plugged into the network properly.</p>	<p>Make sure that the Link LED is lit. If the Link LED is not lit, then the device server is not properly plugged into the network.</p>
<p>When you try to assign an IP with DeviceInstaller, you get the following message:</p> <p><i>No response from device! Verify the IP, Hardware Address and Network Class. Please try again.</i></p>	<p>The cause is most likely one of the following:</p> <p>The Hardware address you specified is incorrect.</p> <p>The IP address you are trying to assign is not a valid IP for your logical subnet.</p> <p>You did not choose the correct subnet mask.</p>	<p>Double-check the parameters that you specified.</p> <p>Note: <i>You cannot assign an IP address to a device server through a router.</i></p>
<p>The device server is not communicating with the serial device it is attached to.</p>	<p>The most likely reason is the wrong serial settings were chosen.</p>	<p>The serial settings for the serial device and the device server must match. The default serial settings for the device server are RS-232, 9600 baud, 8 character bits, no parity, 1 stop bit, no flow control.</p>
<p>When you try to enter the setup mode on the device server via the serial port, you get no response.</p>	<p>The issue is most likely something covered in the previous problem, or possibly, you have Caps Lock on.</p>	<p>Double-check everything in the problem above. Confirm that Caps Lock is not on.</p>
<p>You can ping the device server, but not Telnet to the device server on port 9999.</p>	<p>There may be an IP address conflict on your network</p> <p>You are not Telnetting to port 9999.</p>	<p>Turn the device server off and then issue the following commands at the DOS prompt of your computer:</p> <p>ARP -D X.X.X.X (X.X.X.X is the IP</p>

Problem/Message	Reason	Solution
	<p>The Telnet configuration port (9999) is disabled within the device server security settings.</p>	<p>of the device server).</p> <p>PING X.X.X.X (X.X.X.X is the IP of the device server).</p> <p>If you get a response, then there is a duplicate IP address on the network. If you do not get a response, use the serial port to verify that Telnet is not disabled.</p>
<p>The device server appears to be set up correctly, but you are not communicating with your device attached to the device server across the network.</p>	<p>If you are sure that the serial port setting is correct, then you may not be connecting to the correct socket of the device server.</p> <p>Another possibility is that the device server is not set up correctly to make a good socket connection to the network.</p>	<p>You can check to see whether there is a socket connection to or from the device server by checking the state of CP1, if it has been configured for LED1 functionality.</p> <p>If the state of CP1 is blinking consistently, or is completely off, then there is a good socket connection.</p> <p>If the state of CP1 is low, use the Connect Mode option C0 for making a connection to the device server from the network. Use Connect Mode option C1 or C5 for a connection to the network from the device server. See the full list of Connect Mode options in Connect Mode on page 5-7.</p>
<p>When connecting to the Web-Manager within the device server, the <i>No Connection With The Device Server</i> message displays.</p>	<p>Your computer is not able to connect to port 30718 (77FEh) on the device server.</p>	<p>Make sure that port 30718 (77FEh) is not blocked with any router that you are using on the network. Also, make sure that port 77FEh is not disabled within the Security settings of the device server.</p>

Technical Support

If you are experiencing an error that is not described in this chapter, or if you are unable to fix the error, you may:

- ◆ To check our online knowledge base or send a question to Technical Support, go to <http://www.lantronix.com/support>.
- ◆ Email us at support@lantronix.com.
- ◆ Call us at:
 - (800) 422-7044 Domestic
 - (949) 453-7198 International
 - (949) 450-7226 Fax

Our phone lines are open from 6:00AM - 5:30 PM Pacific Time Monday through Friday excluding holidays.

Technical Support Europe, Middle East, and Africa

Phone: +49 (0) 89 31787 817

Email: eu_techsupp@lantronix.com or eu_support@lantronix.com

Firmware downloads, FAQs, and the most up-to-date documentation are available at: www.lantronix.com/support

When you report a problem, please provide the following information:

- ◆ Your name, and your company name, address, and phone number
- ◆ Lantronix model number
- ◆ Lantronix MAC number
- ◆ Software version (on the first screen shown when you Telnet to port 9999)
- ◆ Description of the problem
- ◆ Status of the unit when the problem occurred (please try to include information on user and network activity at the time of the problem).

Free Manuals Download Website

<http://myh66.com>

<http://usermanuals.us>

<http://www.somanuals.com>

<http://www.4manuals.cc>

<http://www.manual-lib.com>

<http://www.404manual.com>

<http://www.luxmanual.com>

<http://aubethermostatmanual.com>

Golf course search by state

<http://golfingnear.com>

Email search by domain

<http://emailbydomain.com>

Auto manuals search

<http://auto.somanuals.com>

TV manuals search

<http://tv.somanuals.com>