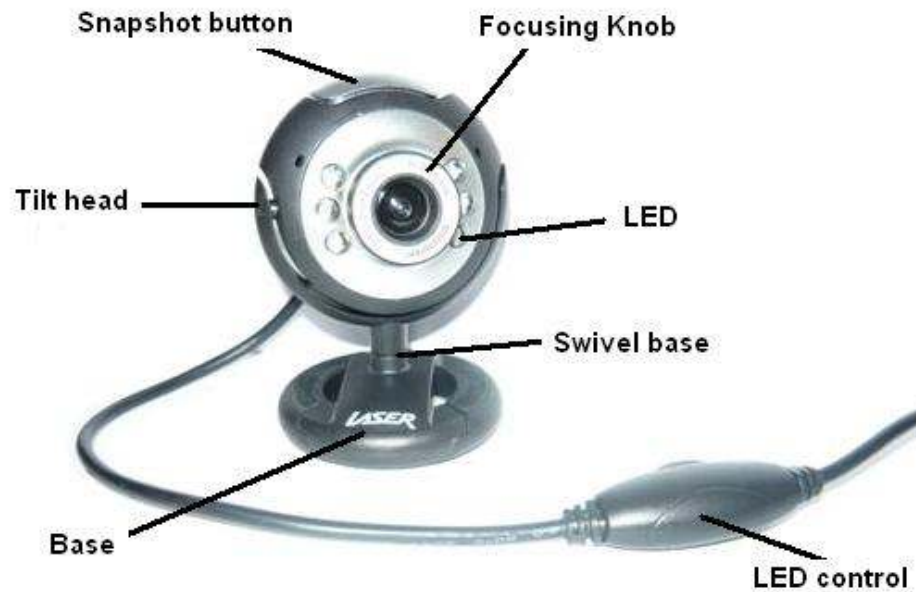


# 1.3m SMART VIEW WEBCAM

## User Guide

## Overview

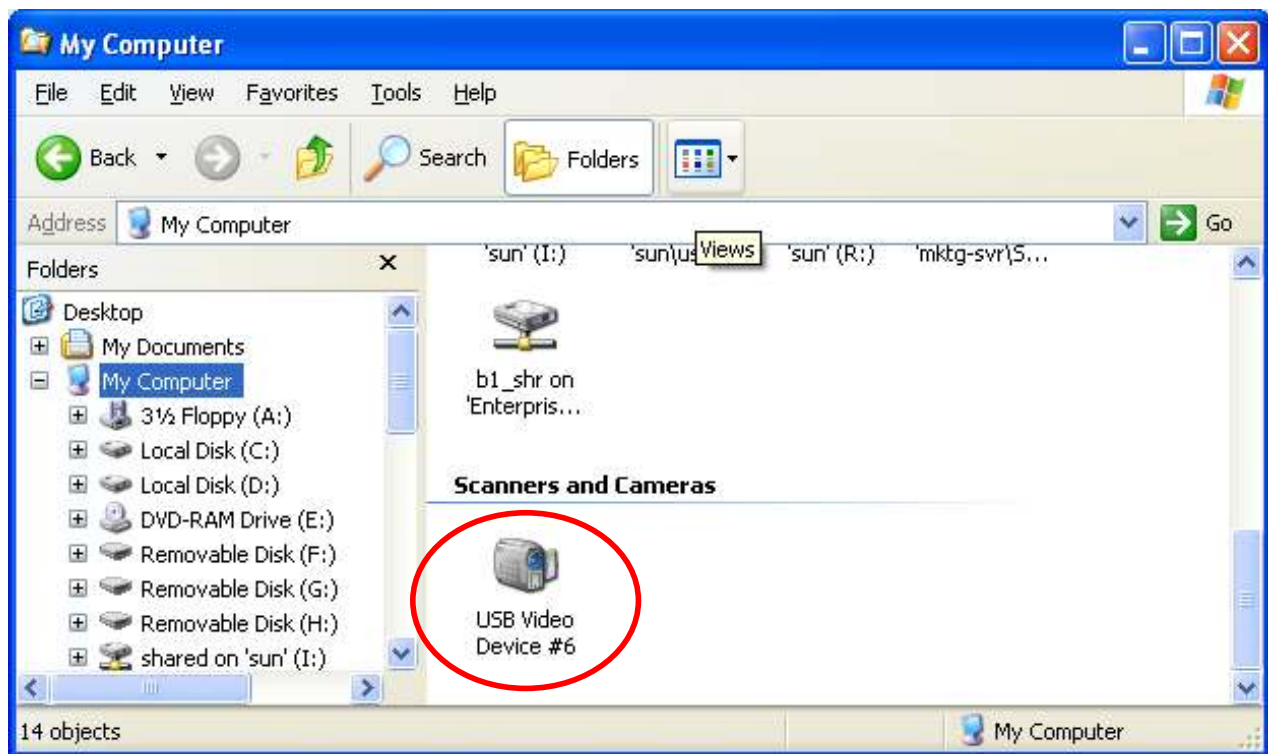


	Function
<b>Snapshot Button</b>	Take snap image with one click when running application program.
<b>Focusing Knob</b>	Adjust focus for clear image.
<b>LED</b>	LED lights.
<b>Tilt Head</b>	Provides 90 degree tilt range.
<b>Swivel Base</b>	Pivots full 360 degree rotation.
<b>Base</b>	Can be used as a stand/clip dual purpose base.
<b>LED Control</b>	For switching ON / OFF the LED lights.

## Webcam Installation

**Notes:** Device driver is not required for running this webcam with Windows 2000 or later Windows Operating Systems.

- Unpack the webcam from package.
- Connect webcam to an available USB port on the computer.
- Computer will automatically detect the webcam.
- Open **My Computer** to check installation.
- When webcam is properly detected by the computer, a USB Video Device will appear under the **Scanners and Cameras** list, as shown in picture below.
- Image can be viewed by clicking and open the **USB Video Device** icon.



## Application installation

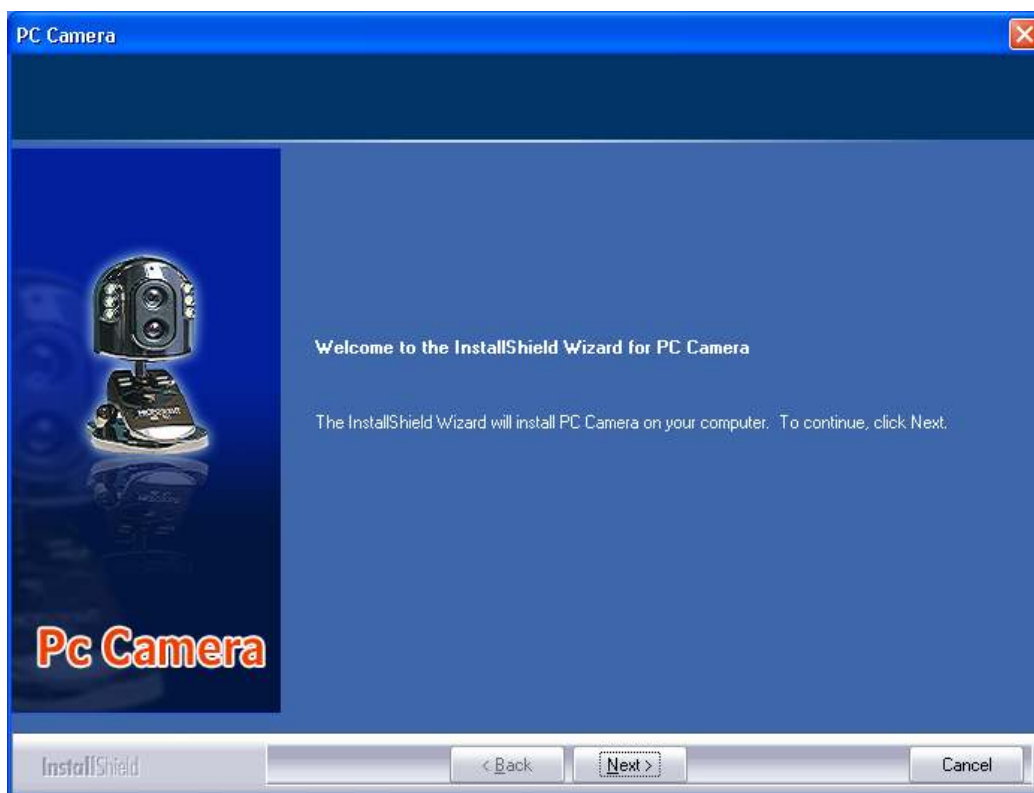
**Attention:** 1.3m Smart View Webcam must be connected to the computer before installing the application.

**Operating System:** Windows XP SP2 English Version

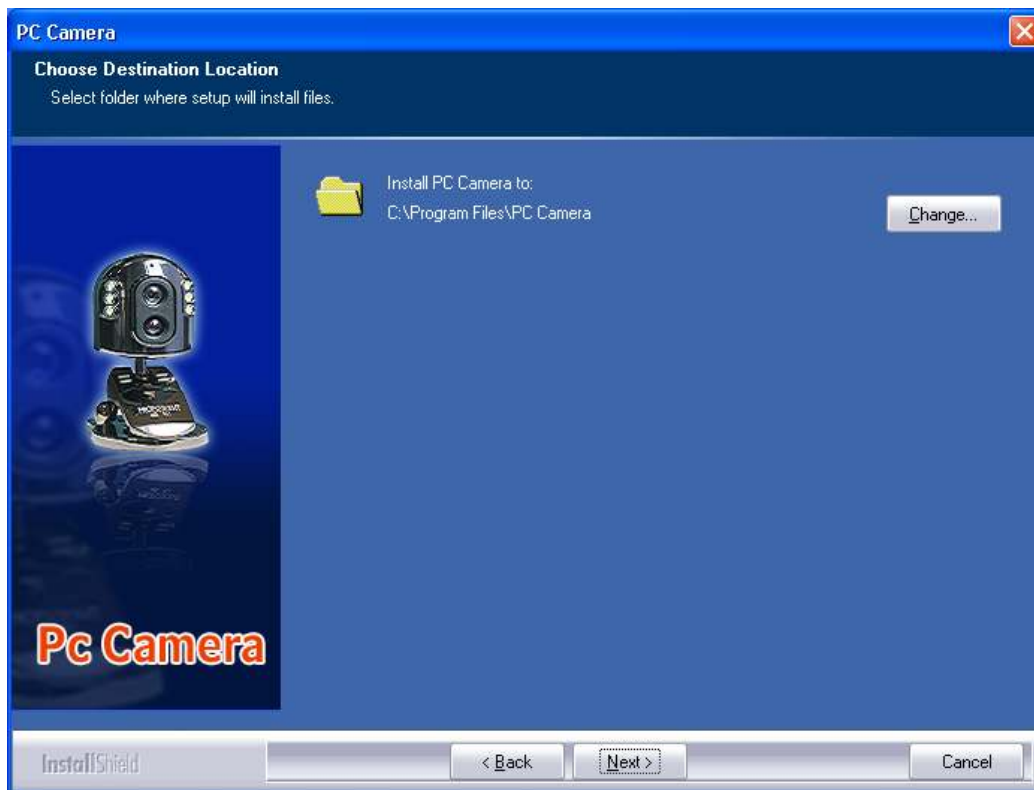
**Step 1** Please run the setup.exe under the installation directory



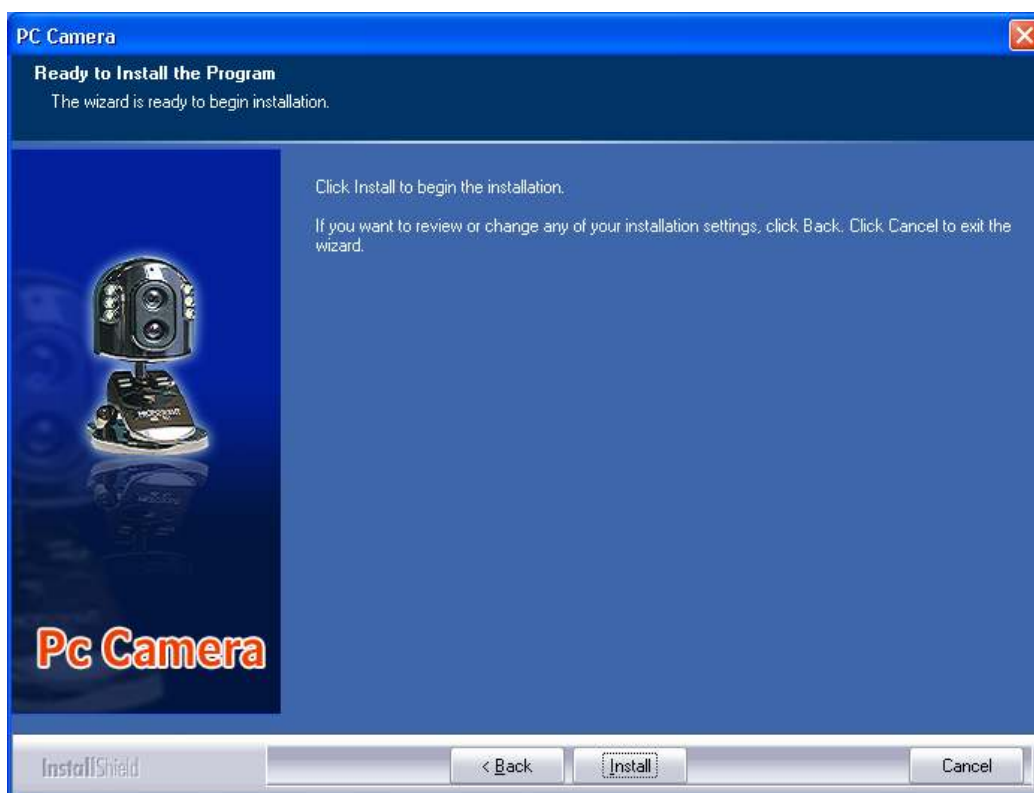
**Step 2** Click on "Next" to start installation.



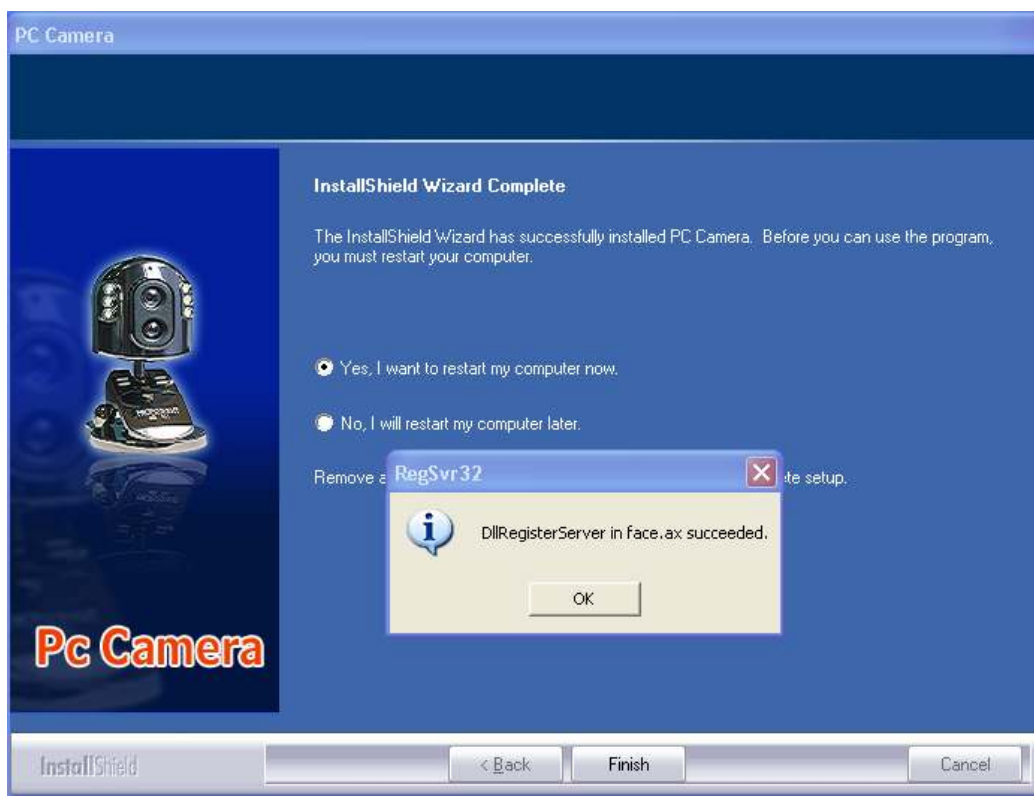
**Step 3** Select the installation path, click on "Next" to continue with the installation.



**Step 4** Click on "Install" to start the installation.



**Step 5** Click on "Finish" to complete the drive installation.



**Notes:** Please restart your computer after installation is completed.

## Uninstall Application

Please use **uninstall.exe** under the program directory. (Start -> Programs -> ARKMICRO ->usbcamcl)

## Application Functions



	Menu bar	Function
<b>File</b>	Set Capture File...	Set filename of captured video.
	Allocate File Space...	Set maximum disk space in MB to be used for the capture file.
	Save Captured Video...	Save the captured video.
	Exit	Exit the application program.
<b>Devices</b>	USB Video device	The connected video device will be automatically detected and enabled.
	USB2.0MIC	The connected audio device will be automatically detected and enabled.
<b>Options</b>	Preview	Enable / Disable preview.
	Audio Capture Filter...	Configure settings for the audio device
	Video Capture Filter...	Configure settings for video device - including contrast, brightness, auto exposure, etc.
	Video Capture Pin...	Set stream format - frame rate, color space and the window size.
<b>Capture</b>	Start Capture	Start capturing video.
	Stop Capture	Stop capturing video.
	Capture Audio	Enable / Disable audio to be captured.
	Closed Captioning	*Feature not used
	Set Frame Rate...	Set the frame rate for capturing video. Note: The highest the frame rate, the more smooth video will be captured.
	Set Time Limit...	Set the maximum number of seconds for capturing.
<b>Image</b>	Take Photo	Take snap shot.
	View	View image taken by "Take Photo" function.

## Free Manuals Download Website

<http://myh66.com>

<http://usermanuals.us>

<http://www.somanuals.com>

<http://www.4manuals.cc>

<http://www.manual-lib.com>

<http://www.404manual.com>

<http://www.luxmanual.com>

<http://aubethermostatmanual.com>

Golf course search by state

<http://golfingnear.com>

Email search by domain

<http://emailbydomain.com>

Auto manuals search

<http://auto.somanuals.com>

TV manuals search

<http://tv.somanuals.com>