

## Pulsar Evolution

500 to 3000 VA

*High Density Power Protection  
for Servers, Storage Systems  
and Networking Equipment*

### **Advanced Features**

- ▶ Compact design – just 1U of rack space up to 1500 VA
- ▶ High Frequency line interactive technology with sinewave output
- ▶ Wide Input voltage tolerances
- ▶ Extended battery runtimes with 2U battery extension modules
- ▶ Hot-swappable batteries
- ▶ Standard USB and Serial communications
- ▶ SNMP and web-based remote supervision
- ▶ Programmable outlets for remote reboot
- ▶ Wide range of installation possibilities



Pulsar Evolution Rack and Tower UPSs offer network administrators the high-availability power solution they need in the most compact footprint on the market. With its optional extended back up times, the Pulsar Evolution offers superior power protection for the next generation of networking applications.



**MGE**  
UPS SYSTEMS

THE UNINTERRUPTIBLE POWER PROVIDER

## The Right Model for Your Application

The evolution of computer networks is moving towards increasingly critical applications requiring ever-higher equipment densities. The result is a growing need for ultra-reliable, ultra-compact power protection solutions. Designed with the evolution of computer networks in mind, **MGE UPS SYSTEMS** meets these increasing demands with the new **Pulsar Evolution**, the **ideal high-density power protection solution** for networking equipment, rack-optimized servers, traditional rack and tower servers and network storage systems.



Pulsar Evolution Tower: 800/1100/1500 VA



Pulsar Evolution 1U Rack: 500/800/1100/1500 VA  
Pulsar Evolution 2U Rack: 2200 and 3000 VA

## Battery Run Times (in minutes)

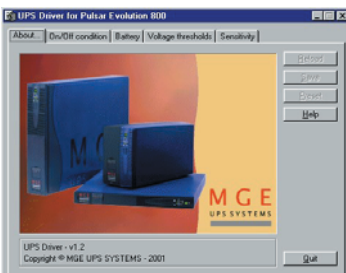
Model	20% Load	50% Load	70% Load	100% Load
Evolution 500	40	13	7.5	4.5
Evolution 800	45	17	10	6
Evolution 1100	42	16	9.5	5.5
Evolution 1500	55	17	10	6
Evolution 2200	55	17	10	6
Evolution 3000	60	20	12	7
3000 + 1 EXB	170	68	47	30
3000 + 2 EXB	280	120	77	54
3000 + 3 EXB	475	177	120	77

## Performance and High Availability

### Superior Performance and Power Quality

Using new high frequency line-interactive technology, the Pulsar Evolution delivers a sinewave output, correcting voltage variations and offering wide input voltage tolerances (up to 150V – 294V).

Software, included with every UPS, allows you to adjust the main operating parameters, such as input and output voltages, to ensure compatibility in all conditions.



### Ultra High Availability

Hot-swappable batteries are standard in all Pulsar Evolution UPSs making access quick and easy from the front of the UPS, greatly reducing the risk of downtime. Battery extension modules can be added to the 2200 and 3000 VA models in either tower or rack configurations for extra-long backup times~over four hours! In addition, the 2 to 4 programmable outlets on each UPS can be used to reset network devices remotely and allocate longer backup times to the most critical equipment.



### Extended Backup Times

Pulsar Evolution 2200 and 3000 UPSs allow for 1 to 3 battery extension modules in either tower or rack configurations for critical applications requiring extended backup times. For applications requiring more than four hours, the Pulsar Evolution 3000XL comes equipped with a super charger allowing for up to 12 battery module extensions or custom battery configurations.



# Selection Guide

## Applications Best Choices

### Rackable or stackable networking

Individual or group protection hubs, switches, routers	<b>Pulsar Evolution Rack</b> 500/800/1100/1500
1 to 20 rack optimized servers	<b>Pulsar Evolution Rack</b> 500/800/1100/1500/2000/3000/3000XL

### Network storage (NAS/SAN)

Network storage subsystems	<b>Pulsar Evolution Rack</b> 500/800/1100/1500
Complete network storage systems	<b>Pulsar Evolution Rack</b> 2200/3000/3000XL
1 to 10 tower servers	<b>Pulsar Evolution Tower</b> 800/1100/1500/2000/3000/3000XL

### Extended backup times

Telecom equipment	<b>Pulsar Evolution</b> 2200 & 3000 with 1 to 3 EXB battery extension modules: up to 2 hours at 3000 VA or 4 hours at 1500VA
	<b>Pulsar Evolution</b> 3000XL with 4 to 12 EXB battery extension modules: up to 4 hours at 3000 VA or 10 hours at 1500 VA



**Pulsar Evolution 500**  
rack-mountable, stackable, tower configuration or wall-mount



**Pulsar Evolution Rack** 800/1100/1500  
rack-mountable or stackable



**Pulsar Evolution Rack/Tower** 2200/3000  
one model only for tower or 2U rack



**Pulsar Evolution Tower**  
800/1100/1500 vertical or flat

## Multiple Installation Possibilities

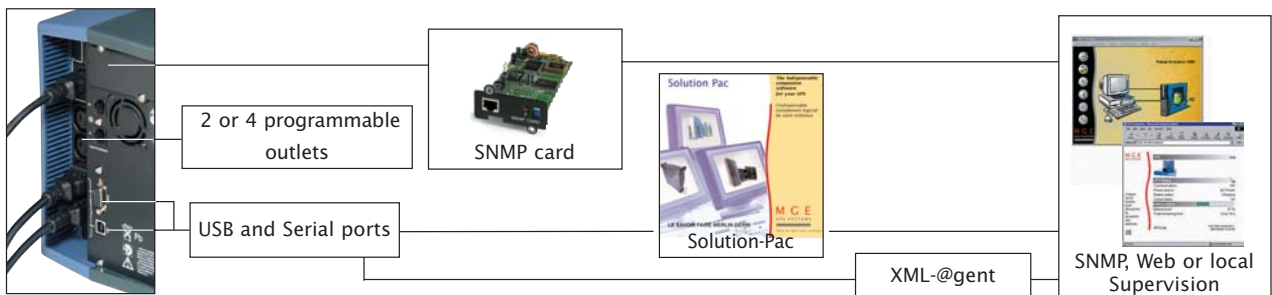
Using proven technology, MGE's innovative Pulsar Evolution meets the growing needs of the market by providing a high density, ultra-compact power supply solution. With a wide variety of installation possibilities, including rack, stack, tower or wall mount, the Pulsar Evolution offers flexibility and availability when and where you need it. And, all required mounting accessories come included with every UPS.

## Local or remote administration

Pulsar Evolution UPSs come with a USB port and a Serial port for compatibility with the existing and future machines. The Solution-Pac software suite, with free updates downloadable from our website at

[www.mgeups.com](http://www.mgeups.com), provides advanced power management solutions or configurations ranging from protection of one or more servers to SNMP or Web-based remote monitoring. And last but not least, Pulsar Evolution UPSs come with 2 to 4 programmable

outlets that can be used to reset network devices remotely and allocate longer backup times to the most critical equipment.

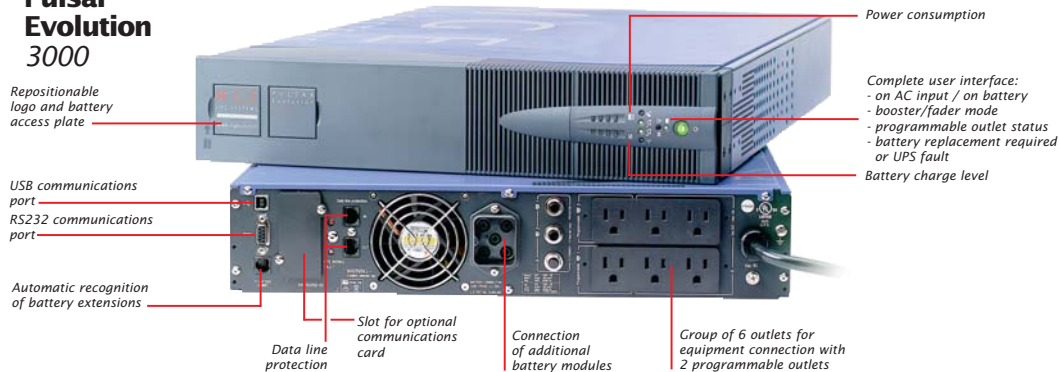


# Characteristics

Pulsar Evolution UPS	500	800	1100	1500	2200	3000/3000XL
Power VA/W	500/350	800/560	1100/700	1500/1000	2200/1540	3000/2000
Versions	1U Rack	Mini-Tower and 1U Rack			Versatile Tower/2U Rack	
Installation possibilities	Rackable, stackable, vertical tower or wall-mount	Mini-Tower version: vertical or horizontal Rack version: rackable or stackable			Rackable, stackable or vertical tower with support base	
Number of outlets	4	4	4	4	6	6
Including Powershare outlets	2	2	2	2	2	2
Battery extension (EXB modules)	-	-	-	-	From 1 to 3 EXBs (1 to 12 for 3000XL)	
<b>Performances</b>						
Technology	High-Frequency Line-Interactive					
Automatic voltage regulation	Booster/Fader					
Output voltage waveform	Sinewave					
Input voltage tolerances	92V/138V, adjustable to 80V/153V via supplied UPS-Driver software					
Frequency	50/60 Hz, auto-select					
Output voltage on battery power	120VAC (adjustable to 100/120/127V via supplied UPS-Driver software)					
<b>Features</b>						
Automatic battery test	Weekly (interval adjustable via supplied UPS-Driver software)					
Hot swappable batteries	x	x	x	x	x	x
Cold start	x	x	x	x	x	x
Deep discharge protection	x	x	x	x	x	x
UPS-Driver for Windows	Settings: Input voltage tolerances, Sensitivity, Battery test, ON/OFF conditions					
Data line protection	Surge protection for RJ45 network connection					
<b>Network Administration/Monitoring</b>						
Communications	1 USB port + 1 Serial port					
Software supplied (Solution-Pac CD)	Including local power management software and SNMP proxy-agents for Windows 2000/NT/98 Linux, Netware, OpenServer, Unixware, SUN Solaris, IBM AIX, HP UX, Compaq Tru64, etc. XML-@gent (October 2001)					
Web-based monitoring	Optional UPScontrol remote display					
Spare slots	1 slot for optional SNMP or status indication card					
Remote indications	Optional UPScontrol remote display					
<b>Standards/Warranty</b>						
Safety	EN 50091-1-1/EN60950(RD), IEC 60950, TÜV GS-Mark					
Electromagnetic compatibility	EN 50091-2, EN 50022/B, IEC 62040-2, IEC 61000-3-2, IEC 61000-3-3					
Design, production and services	ISO 9001					
Marking	UL, cUL, FCC Class A, UL1778					
Warranty (U.S. and Canada)	2 years, parts and labor					

Dimensions, weight and ref.	500	800	1100	1500	2200	3000/3000XL
Tower dimensions (HxWxD in inches)	-	5.9 x 9.3 x 16.3	-	5.9 x 9.3 x 19.0	-	-
Rack dimensions (HxWxD in inches)	1.73 (1U) x 17.2 x 13.9	1.73 (1U) x 17.2 x 19.6	-	1.73 (1U) x 17.2 x 20.6	3.5 (2U) x 17.2 x 25.2	-
Tower/Rack weights (in =lbs.)	- / 19.8	23.1/34.1	25.3/35.2	33/41.9	74.7	80.4
EXB module weight	-	-	-	-	-	92.3
Accessories supplied with Rack versions:	removable and repositionable 19" rack-mount brackets, universal telescopic rails, mounting hardware kit, rear attachment, cable lock system					
Tower ref.	-	89341	89343	89345	-	-
Rack ref.	89340	89342	89344	89346	-	-
Tower convertible to Rack ref.	-	-	-	-	89347	89348/89349
EXB module ref.	-	-	-	-	89350	-

## Pulsar Evolution 3000



MGE UPS SYSTEMS

THE UNINTERRUPTIBLE POWER PROVIDER

13540 N FLORIDA AVE.  
SUITE 105  
TAMPA FL 33613



Download from [www.Somanuals.com](http://www.Somanuals.com) - All Manuals Search And Download.

Phone : 813-960-3445  
FAX 813-960-4779  
[www.omnicontrols.com](http://www.omnicontrols.com)

## Free Manuals Download Website

<http://myh66.com>

<http://usermanuals.us>

<http://www.somanuals.com>

<http://www.4manuals.cc>

<http://www.manual-lib.com>

<http://www.404manual.com>

<http://www.luxmanual.com>

<http://aubethermostatmanual.com>

Golf course search by state

<http://golfingnear.com>

Email search by domain

<http://emailbydomain.com>

Auto manuals search

<http://auto.somanuals.com>

TV manuals search

<http://tv.somanuals.com>