

Memorex®

transfer.

share.

MEGA traveldrive™

User's Guide

Rev. 1.0A



Thank you for your purchase of the Memorex® Mega TravelDrive™. This user's guide will help you get the maximum use and enjoyment from your new Mega TravelDrive. The information contained in this document is subject to change without notice. No part of this manual may be reproduced or transmitted without the written permission of Memorex Products, Inc. The software described in this document is furnished under a license agreement and may be used and/or duplicated in accordance with the terms of the license agreement. Terms and conditions of that agreement can be found during the installation of the software. It is prohibited to copy the software onto any medium except that which is specifically allowed by the license agreement. One copy of the software is allowed for backup purposes.

SAFETY & HANDLING GUIDELINES

- **DO NOT STORE OR USE** in areas exceeding 115° F / 45° C or below 40° F / 4° C. If moving quickly from a cold to warm environment or from a warm to cold environment, allow the drive to adjust to the new temperature before connecting it to a computer, this will help avoid problems with condensation.
- **DO NOT USE AT ALTITUDES** greater than 10,000 ft / 3,050 m or more than 200 ft / 60 m below sea level unless you are in a pressurized environment such as a commercial airplane. The drive head relies on normal air pressure to operate properly.
- **DO NOT REMOVE, BUMP, or JAR** the drive while it is in operation.
- **KEEP AWAY** from excessive moisture or exposure to liquids. If liquid is spilled into the drive, immediately unplug it from the computer and dry the drive as well as possible.
- **MAKE SURE YOUR HANDS ARE DRY** when plugging or unplugging the device into a computer.
- **DO NOT SUBJECT** to excessive force or impact.
- **KEEP AWAY** from strong magnetic fields such as powerful electric motors. Excessive magnetic fields can erase data on the drive.
- **DO NOT** dismantle the drive-there are no serviceable parts inside, and dismantling it will void your warranty.
- **CLEAN** the device only when it is unplugged from a computer. Use a damp(not excessively wet), lint-free cloth and prevent moisture from getting into any openings. Do not use any sprays or solvents to clean the device.

FCC Certification Statement

This device complies with FCC Part 15 Class B of the FCC Rules and is designed to provide reasonable protection against radio and television interference. Although the equipment has been tested and has been found to comply with the allowed RF emission limits as specified below, there is no guarantee that interference will not occur in certain situations.

This device's operation is subject to the following conditions:

1. This device may not cause harmful interference.
2. This device must accept any interference received, including interference that may cause undesired operation.

Elimination of interference can occur by using one of the following:

1. Reorient the affected device.
2. Increase the distance between the affected device and the computer equipment.
3. Plug the computer and its peripherals into a different branch circuit from that used by the affected device.

Copyright © 2005 Memorex Products, Inc. All rights reserved. Version 1.0

Memorex Mega TravelDrive and the Memorex logo are registered trademarks in the United States of America.

Memorex Products, Inc. • Cerritos, CA 90703

Microsoft, Windows, and the Windows logos are registered trademarks of the Microsoft Corporation.

Intel and Pentium are trademarks of the Intel Corporation.

Apple and Macintosh are registered trademarks of Apple Computers, Inc.

Adobe and Adobe Acrobat are registered trademarks of Adobe, Inc.

Patent Pending.

All other trade names referred to in this manual belong to their respective owners.

Memorex Products, Inc. reserves the right to change specifications without notice.

I. DESCRIPTION:

The Memorex Mega TravelDrive is a multi-purpose and universally compatible portable storage device incorporating a miniature hard drive. It uses a plug-and-play USB (Universal Serial Bus) interface that allows it to function as an external drive. The Mega TravelDrive is useable in either an available USB 2.0 or 1.1 port. Your computer easily recognizes the Mega TravelDrive once it is inserted into your USB connection*. You can drag and drop files to or from the Mega TravelDrive just as you would to a floppy disk or a hard drive with the added benefit of a faster, far more secure and portable data storage solution than most other previous alternatives.

II. SYSTEM COMPATIBILITY:

The Mega TravelDrive can be used with virtually any computer that has either a USB 2.0 or 1.1 port. The Mega TravelDrive has the following minimum system requirements –

- Pentium PC or Apple Macintosh computer with USB support
- PC - Windows 98SE* (Second Edition) / Windows Me / 2000 / XP
- Mac OS X or above / Mac OS 8.6~9.x (USB 1.1 support only)
- Linux 2.4x (Please see check our website under FAQ's for "Mounting on Linux.")
- Available USB 2.0 (for High Speed) or USB 1.1 port

* Windows 98SE requires drivers that are available at the Memorex website

III. PACKAGE CONTENTS:

Your Memorex TravelDrive should includes –

- Memorex Mega TravelDrive
- TravelDrive Quick Start Guide
- Protective Carrying Case
- USB Extension Cable

IV. MEGA TRAVELDRIVE ANATOMY:

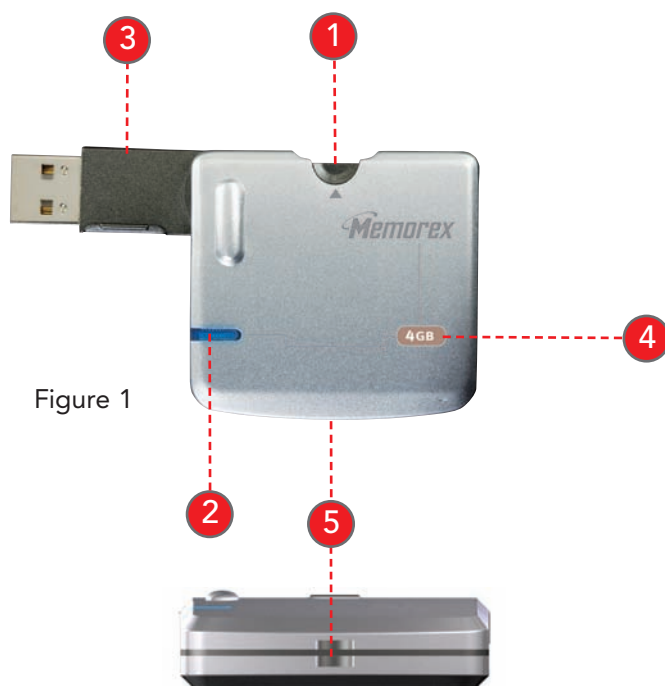


Figure 1

- 1 Pull-up tab for the USB connector
- 2 Power and Activity LED
- 3 Rotating USB connector
- 4 Capacity (indicator label)
- 5 Lanyard connector (lanyard not included)

V. MEGA TRAVELDRIVE FEATURES:

The Mega TravelDrive design provides convenient, easy-to-carry, large-capacity data storage for important files, music, video, or photos wherever you go. Some of the key features are:

- **HIGH SPEED USB 2.0 compliance** for the fastest data transfer speeds—up to 10 times faster than USB 1.1.
- **Blue LED Power & Activity Indicator** – high-tech look providing information for extra safety in transferring files.
- **Backward compatibility** for use with computers installed with USB 1.1 ports.
- **No specific hardware requirements for use on most computer systems.** Uses standard USB ports available on most computers today.
- **Plug n' Play** - No installation software or drivers required. Just plug it into your USB port and go. (Applies to Windows Me, 2000 & XP along with Mac OS X or later)
- **Windows 98SE Compatible** - Windows 98SE requires installing a device driver available for download from the [Memorex website](#).
- **Works between both PC and Macintosh platforms.** Allows convenient swapping of files from either system platform (using the FAT32 file format).
- **No batteries or power adapters required.** Uses power from the USB port and also works with USB hubs.

VI. GETTING STARTED:

Step 1 – Check your Operating System (OS):

- **For Windows® Me, Windows® 2000 & Windows® XP**
There is no need to install any drivers! Go straight to [Step 2 – “Using Your TravelDrive.”](#)
- **For Windows® 98SE** (Internet access required)
You will need to install a driver for the computer to recognize the TravelDrive. [See Step 1A](#), “Windows® 98SE Driver Installation” below.

NOTE: For computers using Windows 98SE, DO NOT insert your TravelDrive into the USB port until you have successfully completed the “Windows 98SE Installation” (Step 1A below).

- **For Windows® NT—NT** does not support USB. The TravelDrive is not supported in this OS.
- **For Windows® 98 or older** – Windows® operating systems prior to Windows® 98SE do not have adequate USB support, and therefore the TravelDrive is not supported by those operating systems and not supported by Memorex.
- **Linux 2.4.x** - The TravelDrive does function with Linux; however specific steps are required to allow the drive to be recognized. Please see the [Memorex website](#) under FAQ's for “Mounting on Linux.”
- **For Apple Macintosh Mac OS 8.6 or higher**
There is no need to install any drivers! Go straight to [Step 2](#).

VI. Windows® 98SE Driver Installation: (Internet access required)

IMPORTANT NOTE: For Windows® Me, 2000, and XP users - Go directly to Step 2 – “Using Your Memorex Mega TravelDrive”

If your computer uses Windows® 98SE as its operating system, you must install a driver for your TravelDrive.

Step 1 – Installing the Win98SE USB 2.0 TravelDrive Driver

1. Turn on your computer and wait for the Windows desktop to appear.
2. Close any open applications.
3. Download the necessary driver by launching your internet browser and going to the Memorex website at www.memorex.com/html/support.php
 - Select DOWNLOAD SOFTWARE, under General Support and Software.
 - Under "Hardware", Choose TravelDrives.
 - Under "Now select your Product" on the right side, select the model you have.
 - From the Images shown, Select the TravelDrive that matches yours.
 - Select Download File once you have determined the appropriate Driver.
 - When the download dialogue box appears, click on SAVE.
 - Choose or create a folder on your computer's hard drive in which you want to save the downloaded driver. You will install the driver from this folder after it has been downloaded.
 - Once the download is complete, click on CLOSE and exit the website.
4. Go to the folder where you saved the zip file. Using the winzip program, unzip the file into the same folder. If winzip is not installed, the trial version is available at www.winzip.com. Once the file have been unzipped, double-click on the setup.exe application to begin the installation.
 - A Welcome dialogue box will pop up to give you the option of installing the drivers. Click on NEXT.
 - A Setup Status screen will appear confirming the installation process has begun.
 - Click "OK" or "Agree" to any driver prompts or software license agreements should they appear during the driver installation.
 - Follow all on-screen instructions.
 - Once completed, a "Restarting Windows" dialogue box will appear.
 - Choose "Yes, I want to restart my computer now" and click OK to reboot your computer to complete the driver installation process.
 - If you are not prompted, reboot your computer to complete the driver installation process.
5. Your Memorex Mega TravelDrive is now ready to use. When you insert the drive into an available USB port on your computer, your system will identify the drive, locate the driver software, and complete the driver installation process.
6. Additional support for your Mega TravelDrive is available at www.memorex.com/html/support.php.

Step 2 – Using Your Mega TravelDrive


Your Memorex Mega TravelDrive is ready to use. Follow the simple steps below to familiarize yourself with its features and to gain full use of your new high-capacity storage device:

- a. Remove the drive from its protective case and lift the pull-up tab at the top to lift and rotate the USB connector until the USB connector is fully exposed (figure 1 on page 3).
- b. Insert the USB connector into an available USB port on your PC.

NOTE: You may be required to wait a few minutes while your new Mega TravelDrive is configuring itself to your computer system. (Click "OK" or "Agree" to any driver prompts should they appear).

IF you are having difficulty in connecting the Mega TravelDrive to your available USB port due to the port's physical location or orientation on your PC, connect the provided extension cable. Take the female end of the cable and connect it to your Mega TravelDrive. Connect the Male end to your PC's available USB port.

Step 2 – Using Your Mega TravelDrive (Continue)

- c. Restart your PC now to ensure the driver installation and drive setup have been properly completed. The reboot is only necessary for the first installation.
- d. Locate and double click the “My Computer” icon (either on the desktop screen or in the Start menu.) The Mega TravelDrive should appear as a “removable disk” icon with an assigned drive letter (Fig 3). The actual drive letter will vary depending on how many drives are installed on your computer.
- e. OPTIONAL: Right clicking on the icon brings up a dialogue box. Clicking PROPERTIES at the bottom of the box opens another dialogue box that will allow you to name your Mega TravelDrive so that in Windows XP it shows up under its own name.
- f. Do NOT remove the Mega TravelDrive while the Status LED is flashing. Click on the green arrow  in the lower right panel of your desktop screen to stop the drive before removing it.

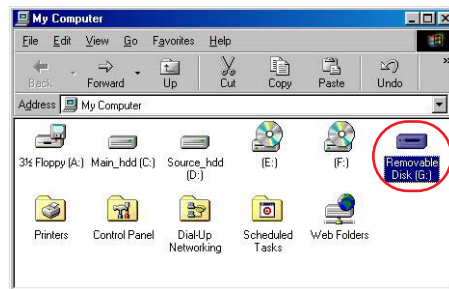


Figure 3

- g. When your drive is not connected to the USB port of your PC, rotate the USB connector to the closed or stored position. Be sure the USB connector is tucked securely within the housing and flush with the drive side. Insert the drive into the carrying case and close the flap.

Congratulations! You may now use your Mega TravelDrive as you would any other hard disk drive on your computer. You can drag and drop files to or from the drive in the same way as copying or saving files to your main hard drive.

VII. STANDARD OPERATION:

A. MICROSOFT WINDOWS®

CONNECTING YOUR DRIVE

1. Lift the pull-up tab at the top of the Mega TravelDrive to swing out the USB connector and insert the connector into an available USB port on your computer. The blue Power and Activity LED will light up, briefly flashing to confirm that the drive is powered.
2. For Windows XP users, your drive folder will appear in a separate window. If this does not happen or if you are not prompted to select a function, follow Step 4.
3. If your drive does not appear, double-click on the “My Computer” icon on your desktop and locate the “Removable Disk” icon. Double-click on that icon to access your TravelDrive.
4. You can now save, copy, or delete files to the Mega TravelDrive just as you would to a hard drive or a floppy disk. The LED Power and Activity light will flash quickly when data are being transferred to or from your drive.

REMOVING YOUR DRIVE

IMPORTANT NOTE: Do not remove the Mega TravelDrive while the LED is flashing! Interrupting the data flow while the LED is flashing may corrupt existing data that are being transferred as well as possibly other data stored on the drive. You may also lose access to your drive and your ability to retrieve any files stored on the Mega TravelDrive. Once the LED returns to a non-blinking state, the data transfer operation is complete; and it is safe to remove your drive.

For Windows® Me/2000/XP:

1. The task bar at the bottom right of the desktop displays program icons (Fig. 4). Click on the green arrow to bring up a list of connected devices.



Figure 4

2. Select "Stop USB Mass Storage Device" with the correct drive letter assigned to your Mega TravelDrive. (If there is more than one USB device active, double-click on the green arrow, check the "Display device components" box and select the drive letter associated with the Memorex Mega TravelDrive.) Select "Stop" and wait for the notice that it is safe to remove the Mega TravelDrive (Fig. 5). If a notice appears that the device cannot be stopped, close any software that had been using the device to open or to save files and repeat the process.

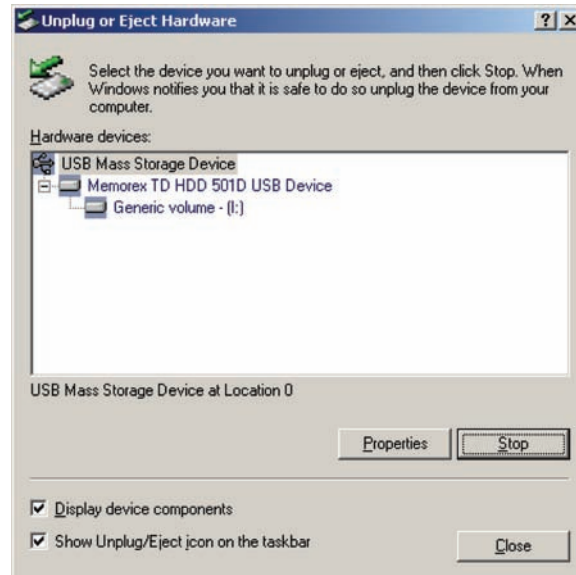


Figure 5

3. Windows® 98SE users merely have to unplug the Mega TravelDrive from the USB port.

NOTE: Unplugging the device without stopping it may cause your computer to become unstable and may cause data corruption on your Mega TravelDrive.

B. APPLE MACINTOSH

NOTE: Maximum performance of the TravelDrive on a Mac requires Mac OS X or higher and a USB 2.0 port. Connecting your drive to Mac OS 8.6 to 9.X perform only at USB 1.1 speeds.

1. Lift the pull-up tab at the top of the Mega TravelDrive to swing out the USB
2. Insert the Mega TravelDrive into an available USB port on your computer. The blue Power and Activity LED will light up, briefly flashing to confirm that the drive is powered.
3. Click on the "Untitled" drive icon once the Mega TravelDrive has been successfully mounted on your Mac Desktop (Fig. 6).



Figure 6

4. You can now save, copy, or delete files to the Mega TravelDrive just as you would to a hard drive or a floppy disk. The LED Power and Activity light will flash quickly when data are being transferred to or from your drive.

NOTE: Due to file re-indexing on a Mac OS, it is always recommended to reformat the drive using Mac OS Extended. However, if the drive will be used on both PCs and Macs, it is recommended to retain the default format of the drive—the FAT32 format.

REMOVING YOUR DRIVE

IMPORTANT NOTE: Do not remove the TravelDrive while the LED is flashing! Interrupting the data flow while the LED is flashing may corrupt existing data that are being transferred as well as possibly other data stored on the drive. You may also lose access to your drive and your ability to retrieve any files stored on the TravelDrive. Once the LED returns to a non-blinking state, the data transfer operation is complete; and it is safe to remove your drive.

1. Before removing the TravelDrive, drag its icon over to the Trash icon.
2. Next, unplug the TravelDrive from its USB port once the icon is not visible on your Mac OS Desktop.

C. USING THE TRAVELDRIVE FEATURES

1. LED Power and Activity Monitor

When the LED is flashing, that means that data are being transferred to or from your drive. **Always wait until the LED stops flashing before removing the drive.** Removing the drive while the LED is flashing risks corrupting the data files and losing access to any other files on the drive.

2. Lanyard Carrying Cable

To attach your lanyard to your TravelDrive, remove the portion of the lanyard with the small thin nylon cable. Slide the small nylon loop thru the end of the drive where the opening appears and insert the connector end thru the middle of the nylon loop.

VIII. TROUBLESHOOTING & FAQ:

1. The Blue Power and Activity LED does not Light up.

Upon initial installation of your TravelDrive into the USB port on your computer, your TravelDrive will flash for a few seconds to let you know the drive is being recognized by your computer. The TravelDrive LED will then become unlit and remain off until data is being transferred to the drive. If this does not occur, verify that your drive is installed by double-clicking "My Computer" icon to display a list of active drives. If your drive does not appear on that list, unplug the device and reboot your computer. Insert your drive again after your system has restarted and your desktop is displayed. Windows 98SE users may have to reinstall the windows drivers. For all other operating systems, repeat steps listed at Section VII: Standard Operation.

2. The Mega TravelDrive appears to be full, but I can't find any files on it.

The files may have been corrupted if data were interrupted during a transfer, either by too early a removal or by a power interruption. Restart your computer and attempt to access your drive. Otherwise, you may need to attempt using some recovery software to possibly rescue some files on your TravelDrive. Memorex at this time does not have any specific software that it can endorse or support to perform this operation. If this is not required or the files on your drive are not needed, you will have to reformat your TravelDrive to regain its functionality.

IMPORTANT NOTE: Reformatting permanently erases all the data on the TravelDrive, and you will lose any unsaved files. See "Reformatting" below.

3. **My Mega TravelDrive will not let me transfer files from my Mac to a PC or from my PC to a Mac.**
The Mac uses both a FAT (File Allocation Table) file system and the Mac OS Standard format from OS 8.6 to 9.21, and this file system is compatible with PCs. Mac OS 9.22 to X (10.x) use a different HFS format that may cause re-indexing of FAT and FAT 32 formatted drives. For those systems you may have to format your TravelDrive for Mac use only with the HFS or HFS+ formats.
4. **The data transfer speeds for the Mega TravelDrive are not much faster than before.**
There are many factors that affect transfer speed performance. The USB ports on your computer may be USB 1.1 and not USB 2.0. The TravelDrive achieves maximum performance with USB 2.0 connections, which can be as much as ten times faster than the speed of USB 1.1. Although your device works with USB 1.1 ports, it will not reach its fastest potential transfer speeds unless the system you are using has a USB 2.0 port.
5. **Mega Traveldrives: My Mega TravelDrive™ is installed, but I do not get a Drive letter or an icon in My Computer for the drive. How can I correct this?** (Must have administrative level access)
If you have other drives installed on the system Windows may try to install the TravelDrive™ as the same drive letter. This issue will normally happen in Windows 2000 and Windows XP. To correct this do the following.
 - a. Go to Control Panel
 - b. Click on Administrative Tools
 - c. Click on Computer Management
 - d. Click on Disk Management
 - e. In the listing you will see the TravelDrive™ as the correct size. Right Click it.
 - f. Click on Change Drive Letter and Paths
 - g. Click Change
 - h. Click on the down arrow and Select an available drive letter (we suggest "T" for TravelDrive™)
 - i. Press OK twice.
 - j. Close Computer Management and Control Panel.

You should be able to see the drive correctly in Windows Explorer or My Computer.

6. **My Mega TravelDrive does not work in an external USB hub?**
If you have confirmed that the drive works when directly connected to a USB ports on the computer, the problem may be that the hub is not adequately drawing power from the computer or requires an external power supply to transfer voltage to the Mega TravelDrive. The Mega TravelDrive is designed to work without the use of an external supply when connected to a USB port on your computer. In order to use your Mega TravelDrive, you will either need to use a better external hub or connect directly to the USB port on the computer.

IX. FAQs (FREQUENTLY ASKED QUESTIONS):

1. **When do I have to replace the battery?**
Never. The Mega TravelDrive draws its power from the USB port. It has no batteries and requires no external power supply to function.
2. **Do I have to protect the Mega TravelDrive from airport X-rays or magnetic fields?**
No. Normal magnetic fields have no effect on the Mega TravelDrive. X-rays used in airport security systems will not damage your drive; however, it is always wise to make a backup of your files before traveling.
3. **I don't have USB 2.0. Can I still use the USB 2.0 Mega TravelDrive with my USB 1.1 connections?**
Yes. The Mega TravelDrive is backwards compatible with USB 1.1.
4. **Can I use a USB 1.1 extension cable with the Mega TravelDrive?**
Yes. USB 1.1 and 2.0 extension cables will function the same way.
5. **I carry my Mega TravelDrive around and I'm worried that I may damage the drive.**
The Mega TravelDrive is a Hard Disk Drive that contains moving parts. Extra care in handling and transporting your drive should be applied to avoid potential damage to your Mega TravelDrive. It is strongly advised that you backup your files often and regularly to avoid any potential data loss.

6. Can I fill the Mega TravelDrive to its maximum capacity?

Yes, but it is not advisable due to the nature of the file structures of re-writable technology used on your Mega TravelDrive and other media such as flash cards, Hard Drives and CD-RWs. These media become unreliable when filled to capacity. It is strongly recommended that a small amount of safety margin be reserved to protect access to your files.

7. I accidentally took out the Mega TravelDrive while the activity light was flashing. Now it doesn't work. Can it be repaired?

Your Mega TravelDrive should still function normally; however, there is a strong possibility that the file or files that you were transferring may have become corrupted. If that is the case, you may need to seek recovery software that could possibly retrieve some critical files. In order to get your Mega TravelDrive working again, you may have to reformat the drive.

IMPORTANT NOTE: Reformatting permanently erases all the data on the TravelDrive, and you will lose any unsaved files permanently. See "Reformatting" below.

8. I've used my TravelDrive for a long time, but it's not working as well as before. Do these things wear out?

Although the Mega TravelDrive is designed to perform an extensive period of time, over a period of usage, adding and deleting a great many files leaves anomalies in the file structure that may need to defragment your Mega TravelDrive hard drive. See below under section X: Reformatting and Defragmenting your Mega TravelDrive. It is strongly advised that you backup your files before attempting either one of the processes listed below in order to avoid unintentional erasure of files or data.

X. REFORMATTING:

The file structure of the Mega TravelDrive can be refreshed over long period of use just as hard drives need defragging over time to make file access faster. Reformatting the Mega TravelDrive restores its file structure if it has been corrupted by an interruption of data transfer due to too early removal of the device or a power outage during file transfers

IMPORTANT NOTE: Reformatting permanently erases all the data on the Mega TravelDrive, and you will lose any files that have not been copied to another hard disk or CD-R. This is considered a procedure for ADVANCED USERS, and extreme caution should be applied before performing this operation.

1. Save all files on the Mega TravelDrive to another medium such as a hard drive, a flash card, or a CD-R. Reformatting permanently erases all the data on your Mega TravelDrive .
2. To format the Mega TravelDrive, follow the directions listed below based on your computer type:

PC

- a. Close all open applications including anti-virus software that may interrupt the format process.
- b. Double-click on the "My Computer" icon on the desktop.
- c. Right click on the "Removable Disk" icon with the drive letter assigned to your TravelDrive.
- d. Select "Format" from the drop-down menu that appears.
- e. Optional: Type in a name in "Volume label" if you have more than one TravelDrive and prefer to assign names to differentiate them.
- f. Click on "Start." A warning notice appears that all data will be erased. Click "OK." The formatting will only take a few seconds, and a "Format Complete" notice will appear when the formatting is done.
- g. Your Mega TravelDrive should be recognized by your system at this point. You can return to using your drive as before.

Apple Macintosh

Mac OS 8.6~9.x:

- a. Close all open applications including anti-virus software that may interrupt the format process.
- b. Click on "Special" on the toolbar.
- c. Click on "Erase Disk".
- d. Choose your Format (DOS, Pro DOS or Mac OS Standard).
- e. Click on "Erase" to start the formatting process.

Mac OS X:

- a. Close all open applications including anti-virus software that may interrupt the format process.
- b. Open your "Applications" folder.
- c. Open your "Utilities" folder.
- d. Click on "Disk Utility."
- e. Your TravelDrive will be listed to the left of the program by its capacity and with a drop down description that says "untitled." Click on the drive capacity listing to get the Erase options.
- f. Choose the "Mac OS Extended" format for the use with only Mac systems.
- g. Check the box "Install Mac OS 9 Drivers"; this will allow for better Mac compatibility with older systems.
- h. Click on the "Options" button.
- i. Check the box "Zero all data" to fully format the drive.
- j. Click "OK" to accept the selection.
- k. Click "Erase" to initiate the format process.
- l. Click "Erase" to verify that you want to start erasing the drive.

The Mega TravelDrive should be mounted as "Untitled" after following the above steps.

NOTE: Once you have changed the format of the Mega TravelDrive from FAT32 to another format, it may not be able to be used on a PC. It will become a Mac-only device.

XI. TECHNICAL SUPPORTS:

To receive technical support for your TravelDrive beyond what is available from the links included on the installation discs (See "Support" under Section VII: "Standard Operation" above), please visit our website at www.memorex.com or if residing in North America call 1-877-Is It Live... Or 1-877-474-8548. Register your product under the "Support" section.

XII. LIMITED 1 YEAR WARRANTY:

Memorex Products warranties this product against defects in materials or workmanship for 1 Year (Europe – 2 Years) from the date of purchase. This warranty applies to the original purchaser; proof of original retail purchase is required. This warranty specifically excludes damage caused by misuse, abuse, improper storage, or use in a commercial application. No warranty of merchantability or fitness for a particular purpose is made. In the event of a claim against this warranty, Memorex Products' obligation and the claimant's sole remedy shall be replacement of the product. This warranty specifically excludes responsibility for recorded data in any form.

Free Manuals Download Website

<http://myh66.com>

<http://usermanuals.us>

<http://www.somanuals.com>

<http://www.4manuals.cc>

<http://www.manual-lib.com>

<http://www.404manual.com>

<http://www.luxmanual.com>

<http://aubethermostatmanual.com>

Golf course search by state

<http://golfingnear.com>

Email search by domain

<http://emailbydomain.com>

Auto manuals search

<http://auto.somanuals.com>

TV manuals search

<http://tv.somanuals.com>