

TABLE OF CONTENTS

Precautions	2	• High-Speed Music Search	40
FCC Declaration	3	• Forward/Reverse Skip	40
EIA Guidelines	4	• Music Contextual Menu	41
Location of Controls	6	• Using the djScan Feature	45
Charging the Battery	7	• Using the djMix Feature	47
Installing the Software	8	• Using the djMoods Feature	48
• Installing the MyDJ Plug-In	9	Operation—Video Playback Mode	49
• Installing Windows Media Player 10	11	• To Watch Videos	49
• Installing the MusicIP Mixer	14	• High-Speed Video Search	50
• Installing MediaCoder	17	• Forward/Reverse Skip	50
Downloading and Transferring Files	20	Operation—Photo Playback Mode	51
Using the Software	25	• To View Photos	51
• Using the MyDJ Plug-In	25	• Thumbnail View	52
• Using the MusicIP Mixer (Mac OS X)	27	• Slideshow View	52
• Using the MusicIP Mixer (Win XP)	29	Operation—FM Radio Mode	53
• Using MediaCoder	32	• To Listen to the FM Radio	53
Safely Remove Hardware	33	• To Add/Load Presets	54
General Operation	34	• To Record the FM Radio	54
• Turning the Power On/Off	34	Operation—Recorder Mode	55
• Menu Button	34	• To Create a Voice Recording	55
• Inserting/Removing an External Memory Card (Mini SD)	34	• To Delete a Recording	56
• Headphones Jack	35	• To Listen to a Recording	56
• Volume Buttons	35	Settings Menu	57
• Hold Switch	36	Troubleshooting Guide	69
• Default/Full Screen	36	Formatting the Player	71
Operation—Music Playback Mode	37	Resetting the Unit	72
• To Listen to MP3s/WMA's	37	Updating the Firmware	72
• To Delete Songs from the PlayQueue	39	Specifications	73

PRECAUTIONS

COPYRIGHT:

- Distributing copies of MP3, WMA, WMA with DRM tracks and/or WMV files without permission is a violation of international copyright laws.

SAFETY:

- Vibration experienced during walking or exercising will not affect the player. However, dropping the player or dropping a heavy object on the player may result in damage or sound distortion.
- Avoid spilling any liquid onto or into the player.
- Do not leave the player in a location near heat sources; in a location subject to direct sunlight, excessive dust, sand, moisture, rain or mechanical shock; on an unlevel surface; or in a car with the windows closed during periods of excessive heat.

ROAD SAFETY:

- Do not use headphones while driving, cycling or operating any motorized vehicle. It may create a traffic hazard and it is illegal in some areas. It can be potentially dangerous to play your headset at a high volume while walking, especially at pedestrian crossings. You should exercise extreme caution or discontinue use in potentially hazardous situations.

FCC WARNING:

- This equipment may generate or use radio frequency energy. Changes or modifications to this equipment may cause harmful interference unless the modifications are expressly approved in the instruction manual. The user could lose the authority to operate this equipment if an unauthorized change or modification is made.

This Class B digital apparatus complies with Canadian ICES-003.
Cet appareil numérique de la classe B est conforme à la norme NMB-003
du Canada.

FCC DECLARATION

This device complies with Part 15 of the FCC rules. Operation is subject to the following two conditions: 1) This device may not cause harmful interference, and 2) This device must accept any interference received, including interference that may cause undesired operation.

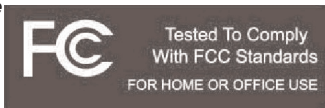
Warning: Changes or modifications to this unit not expressly approved by the party responsible for compliance could void the user's authority to operate the equipment.

NOTE: This equipment has been tested and found to comply with the limits for a Class B digital device, pursuant to Part 15 of the FCC Rules. These limits are designed to provide reasonable protection against harmful interference in a residential installation. This equipment generates, uses and can radiate radio frequency energy and, if not installed and used in accordance with the instructions, may cause harmful interference to radio communications.

However, there is no guarantee that interference will not occur in a particular installation. If this equipment does cause harmful interference to radio or television reception, which can be determined by turning the equipment off and on, the user is encouraged to try to correct the interference by one or more of the following measures:

- Reorient or relocate the receiving antenna.
- Increase the separation between the equipment and receiver.
- Connect the equipment into an outlet on a circuit different from that to which the receiver is connected.
- Consult the dealer or an experienced radio/TV technician for help.

Shield cable must be used with this unit to ensure compliance with class B FCC limits.



Dear Customer:

Selecting fine audio and video equipment such as the unit you've just purchased is only the start of your musical enjoyment. Now it's time to consider how you can maximize the fun and excitement your equipment offers. This manufacturer and the Electronic Industries Association's Consumer Electronics Group want you to get the most out of your equipment by playing it at a safe level. One that lets the sound come through loud and clear without annoying blaring or distortion and, most importantly, without affecting your sensitive hearing.

Sound can be deceiving. Over time your hearing "comfort level" adapts to higher volumes of sound. So what sounds "normal" can actually be loud and harmful to your hearing. Guard against this by setting your equipment at a safe level BEFORE your hearing adapts.

To establish a safe level:

- Start your volume control at a low setting.
- Slowly increase the sound until you can hear it comfortably and clearly, and without distortion.

Once you have established a comfortable sound level:

- Set the dial and leave it there.

Taking a minute to do this now will help to prevent hearing damage or loss in the future. After all, we want you listening for a lifetime.

We Want You Listening For A Lifetime

Used wisely, your new sound equipment will provide a lifetime of fun and enjoyment. Since hearing damage from loud noise is often undetectable until it is too late, this manufacturer and the Electronic Industries Association's Consumer Electronics Group recommend you avoid prolonged exposure to excessive noise. This list of sound levels is included for your protection.

Decibel

Level

Example

30	Quiet library, soft whispers
40	Living room, refrigerator, bedroom away from traffic
50	Light traffic, normal conversation, quiet office
60	Air conditioner at 20 feet, sewing machine
70	Vacuum cleaner, hair dryer, noisy restaurant
80	Average city traffic, garbage disposals, alarm clock at two feet

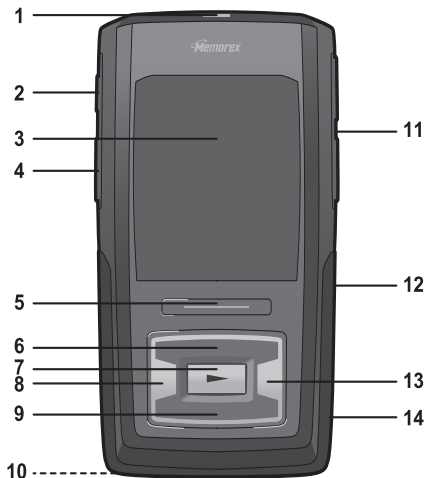
THE FOLLOWING NOISES CAN BE DANGEROUS UNDER CONSTANT EXPOSURE:

90	Subway, motorcycle, truck traffic, lawn mower
100	Garbage truck, chain saw, pneumatic drill
120	Rock band concert in front of speakers, thunderclap
140	Gunshot blast, jet engine
180	Rocket launching pad

Information courtesy of the Deafness Research Foundation.



LOCATION OF CONTROLS



1. MyDJ Button
2. Hold Switch
3. Display
4. Record Button
5. Menu Button
6. Navigation Up Button
7. Enter/Play/Pause ►|| Button
8. Navigation Left/Skip-Search ◀◀ Button
9. Navigation Down Button
10. Headphones Jack, MIC (Microphone) and USB Jack (Bottom of Unit)
(HEADPHONES PART NO. EPEAREP70600000-0-00*, USB CABLE PART NO. CTPCLUSBLCN6000-0-00*)
11. Volume Up/Down Buttons
12. Reset Button (Under Cover)
13. Navigation Right/Skip-Search ▶▶ Button
14. Mini SD Memory Card Slot (Under Cover)

***Consumer Replaceable Part
(See page 74 to order.)**

CHARGING THE BATTERY

This unit has a built-in Lithium Polymer rechargeable battery. When the bars in the battery indicator (in the display) become low (see Figure 1) and especially when the bars turn red, recharge the battery as follows.

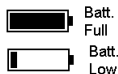


Figure 1

1. Connect the USB cable to the USB jack on the bottom of this unit (as shown) and to the USB port on your computer; “✓ OK to Remove” will appear on the screen. When charging, the battery indicator will flash between empty and the current charge. Once the battery is fully charged, the indicator will stop flashing.



NOTES:

- To disconnect this unit from your computer, make sure to follow the “Safely Remove Hardware” instructions on page 33.
- It takes approx. 3 hours to charge the battery from empty to full. When fully charged, the unit can playback for approx. 20 hours in Music Playback mode. (Actual playback times may vary.)
- For data transfer, please use the USB cable (included) to connect the unit to your computer.
- “Low Battery Voltages” will appear in the display when the battery is empty.
- When the battery is empty and connected to the computer for charging, it may take a few minutes for the “✓ OK to Remove” screen to be displayed.

INSTALLING THE SOFTWARE

Software Installation CD (PART NO. CTPCDMEMO122000-0-00*) General Information

The MyDJ Plug-In is compatible with Microsoft Windows XP (Home or Professional Edition with Service Pack 2 or higher) or Vista. The MusicIP Mixer and MediaCoder are compatible with Microsoft Windows ME, 2000 and XP.

For Microsoft Windows XP:

Use the CD to install the MyDJ Plug-In, Windows Media Player 10 and/or the MusicIP Mixer for Windows.

System requirements for MyDJ Plug-in:

- Intel Pentium (700MHz or better recommended)
- 128MB RAM (recommended minimum)
- An active Internet connection

Windows will automatically detect the audio player without installing the CD software when the USB cable is connected.

For Mac OS X:

Mac OS X will automatically detect the audio player without installing the CD software when the USB cable is connected. Use the CD to install the MusicIP Mixer (for Mac OS X 10.3 or higher).

IMPORTANT NOTES:

- When you insert the Software Installation CD, you will first have to select to “Install PC Software” or “Install Mac OS X Software” (depending on your computer). Please note that the screens shown in the manual are for a PC.
- For PC users, please only install Windows Media Player 10 OR MusicIP Mixer. Installing both may cause the unit to not be detected by your computer.

***Consumer Replaceable Part (See page 74 to order.)**

INSTALLING THE MyDJ PLUG-IN

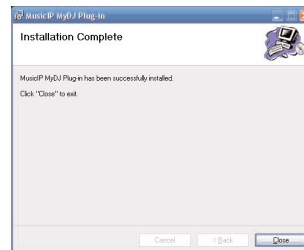
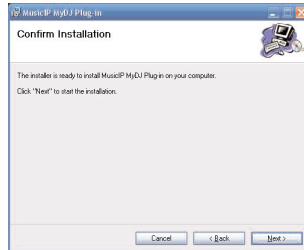
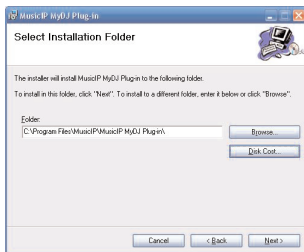
**Procedure to Install the MyDJ Plug-In:
(for Windows Media Player 10; see
requirements on the previous page):**

1. Insert the installation CD-Rom into the CD Drive, then the installation screen will appear. If the installation screen doesn't automatically appear, double-click My Computer then double-click on the CD drive, then the installation screen will appear. After selecting "Install PC Software", click "Download & Install MyDJ Plug-in for Windows Media Player".
2. At the first pop-up screen, click "Save" to save "wmp_plugin.msi" onto your computer. Save in a convenient location, such as on your Desktop.
3. Double-click on the "wmp_plugin" icon on your Desktop (if saved there) and the Setup Wizard will appear. Click "Next".



INSTALLING THE MyDJ PLUG-IN

- The “Select Installation Folder” screen will appear. It is recommended to keep the folder as is. Then click “Next”.
- At the “Confirm Installation” screen, click “Next” to start the installation.
- When successfully completed, the “Installation Complete” screen will appear. Click “Close” to exit the Setup Wizard. Please see page 25 for how to use the MyDJ Plug-In.

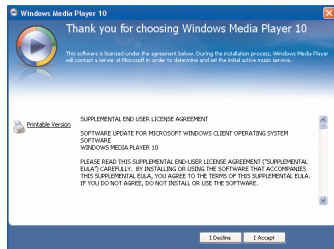


WINDOWS MEDIA PLAYER 10 INSTALLATION

Windows Media Player 10 is for use with Windows XP only. For Windows ME and Windows 2000, please visit **www.Microsoft.com** to download the corresponding Windows Media Player for your computer.

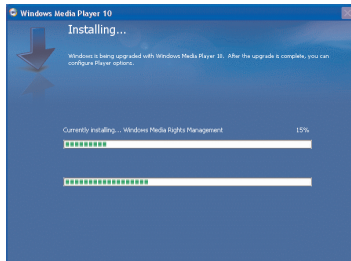
Once you have installed Windows Media Player 10, you can transfer MP3 files, WMA files, WMA files with DRM 9 or 10 and photos to your player using the “Sync” function.

1. Insert the installation CD-Rom into the CD Drive, then the installation screen will appear. If the installation screen doesn't automatically appear, double-click My Computer then double-click on the CD drive, then the installation screen will appear. After selecting “Install PC Software”, click “Download Windows Media Player”.
2. You will be directed to the Windows Media Download Center. Select Download (Windows Media Player), Version (Player 10 [for Windows XP] is recommended) and Language. Then, click “Download Now”. At the pop-up window, click “Run” to run “MP10Setup.exe”. Click “Run” again. Installation will begin.
NOTE: Please install WMP up to WMP10, otherwise the unit may not be detected by your computer.
3. Read the License Agreement, then click I ACCEPT.

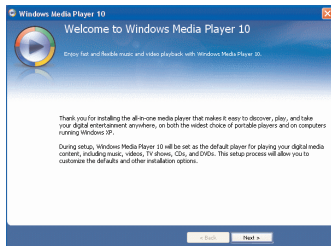


WINDOWS MEDIA PLAYER 10 INSTALLATION

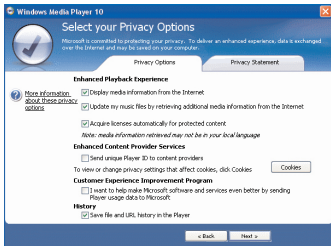
4. Installation will continue.



5. At the Welcome screen, click NEXT.

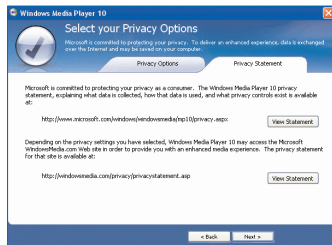


6. Select the desired privacy options.

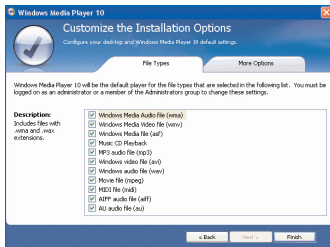


WINDOWS MEDIA PLAYER 10 INSTALLATION

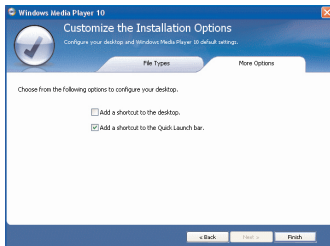
7. Click on Privacy Statement to view the Statement, if desired. When finished, click "Next".



8. Read the instructions and tick the check boxes as desired. Then click on More Options and tick the check boxes as desired.



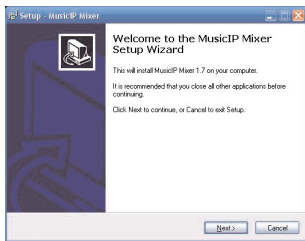
9. Click "Finish" to finish the installation of Windows Media Player 10.



INSTALLING THE MUSICIP MIXER

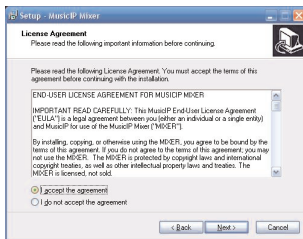
Procedure to Install the MusicIP Mixer:

1. Insert the installation CD-Rom into the CD Drive, then the installation screen will appear. If the installation screen doesn't automatically appear, double-click My Computer then double-click on the CD drive, then the installation screen will appear. After selecting "Install PC Software" or "Install Mac OS X Software", click "Download & Install MusicIP Mixer" (for Windows or for Mac OS X 10.3 or higher, depending on your computer).
2. For Windows, at the first pop-up screen, click "Save" to save "mixerwin32.exe" onto your computer. Save in a convenient location, such as on your Desktop.
3. Double-click on the "MusicIP Mixer" icon on your Desktop (if saved there) and the Setup Wizard will appear. Click "Next".

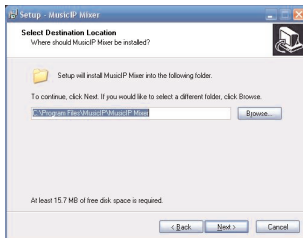


INSTALLING THE MUSICIP MIXER

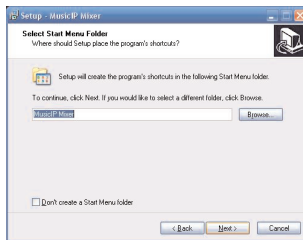
- The "License Agreement" screen will appear. Select "I accept the agreement" and then click "Next".



- The "Select Destination Location" screen will appear. It is recommended to keep the folder as is. Then click "Next".



- The "Select Start Menu Folder" screen will appear. It is recommended to keep the folder as is. Then click "Next".



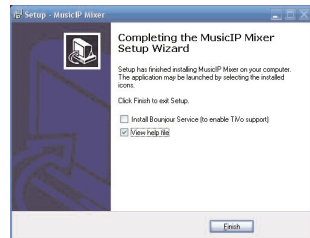
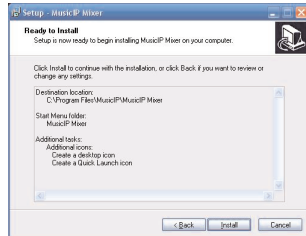
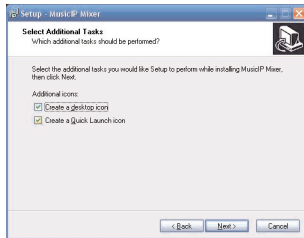
INSTALLING THE MUSICIP MIXER

- The “Select Additional Tasks” screen will appear. Select (check) “Create a desktop icon” and/or “Create a Quick Launch icon”, as desired, and then click “Next”.
- The “Ready to Install” screen will appear. To continue, click “Install”.
- The “Completing the MusicIP Mixer Setup Wizard” screen will appear. If the “Install Bonjour Service (to enable TiVo support)” is listed as an option, you do NOT need to select it. It is highly recommended that you select “View help file”, so that after installation, you will immediately be directed to further instructions regarding the MusicIP Mixer. Click “Finish” to exit the Setup Wizard.

Please see page 29 for how to use the MusicIP Mixer.

You can also refer to the document located in: "C:\Program Files\MusicIP\MusicIP Mixer\help\index.htm" (if you did not change the folder in Step 5).

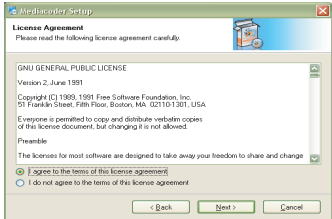
You can also visit:
<http://www.musicip.com/mixer/help.jsp>
for the MusicIP Mixer Help page.



INSTALLING MEDIACODER

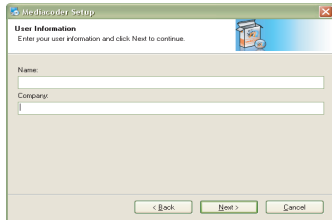
Procedure to Install MediaCoder (for Windows ME, 2000, XP ONLY):

1. Insert the installation CD-Rom into the CD Drive, then the installation screen will appear. If the installation screen doesn't automatically appear, double-click My Computer then double-click on the CD drive, then the installation screen will appear. After selecting "Install PC Software", click "Download & Install MediaCoder for Windows".
2. The "Welcome" screen will appear. Click "Next".
3. The "License Agreement" screen will appear. Select "I agree..." and then click "Next".

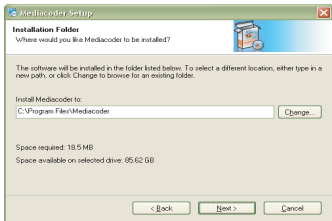


INSTALLING MEDIACODER

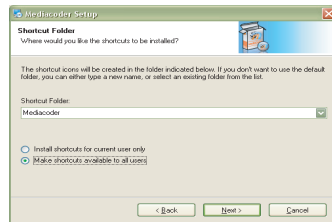
4. The “User Information” screen will appear. Enter your user information and click “Next”.



5. The “Installation Folder” screen will appear. It is recommended to keep the folder as is. Then click “Next”.

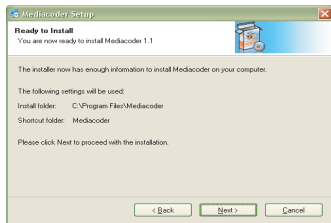


6. The “Shortcut Folder” screen will appear. Select the desired Shortcut folder and Shortcut options. Then click “Next”.

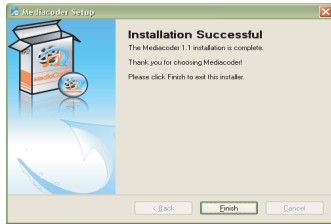


INSTALLING MEDIACODER

7. The “Ready to Install” screen will appear. Click “Next”.



8. After the program is done installing, the “Installation Successful” screen will appear. Click “Finish” to end installation. See page 32 for how to use MediaCoder.



DOWNLOADING AND TRANSFERRING FILES

TRANSFERRING FILES

You can download digital music files from the Internet or use encoding software to convert music that you have on an audio CD into MP3 or WMA format. Once these files are stored on your computer you can easily copy them to your player.

For Windows XP, if you have already installed WMP (Windows Media Player) 10, you can transfer music files (MP3, WMA and/or WMA files with DRM 9 or 10) and photos to the player through the "Sync" function of WMP 10. Connect your player to the USB port on your computer as shown on page 7. Then, follow the procedure on page 23 to transfer files to the player.

NOTE: Video files cannot be transferred using WMP 10. The video files must be "dragged and dropped" directly. Please see the note on the bottom of page 23 for additional information.

For Windows ME, Windows 2000 or Windows XP (without WMP 10), transfer video, photo and/or music files as follows:

1. Connect your player to the USB port on your computer as shown on page 7.
2. A "Removable Disk" window will automatically pop-up on your computer screen.
3. To add more files and songs to your player, simply drag and drop MP3 or WMA files from anywhere on your computer into the "Removable Disk" window.

IMPORTANT: A WMA file with DRM 9 or 10 will not play back if you directly drag and drop it into the "Removable Disk" window. You must use WMP 10 to transfer copy-protected audio files as described on page 23. During the file transfer, do not unplug the device from the computer until the display shows "Ok to remove". **DO NOT** operate the unit until "Loading" disappears from the screen after disconnecting from the computer.



DOWNLOADING AND TRANSFERRING FILES (CONT.)

MEDIA FILES SUPPORTED FORMATS

Audio Formats: MP3, MPEG 1/2/2.5 Layer 3 with a bit rate of 32-320 kbps, WMA files with DRM 9 or 10 with a bit rate of 48-192 kbps

Video Formats: WMV–WMV 9 (simple profile, 220 x 176 resolution, 30 fps, 384 kbps max) + WMA 9 (sample rate of 8-48 kHz), **MPEG-4**–AVI (220 x 176 resolution, 30fps, 768 kbps max) + MP3

Photo Format: baseline JPEGs.

IMPORTANT NOTE FOR MP3s:

Windows Media Player Sync may remove MyDJ ready information from MP3 files if the "Convert files as required by this device" option is active. To disable this option go to "Tools" ⇒ "Options..." menu within Windows Media Player and then click the Devices tab. Please be sure you have this unit plugged in to your PC at this time. Select your player from the list, click the "Properties" button and then select the "Quality" tab. Ensure that "Convert files as required by this device (recommended)" is not checked. Once you have made any changes, click the "OK" button.

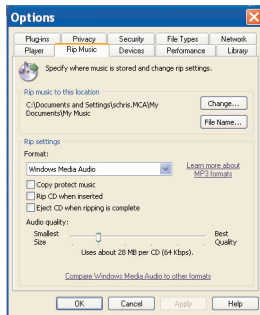
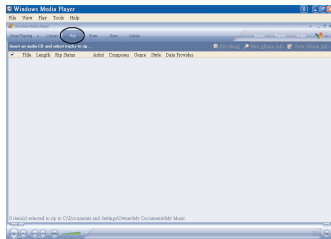
DOWNLOADING AND TRANSFERRING FILES (CONT.)

For Windows XP, you can also utilize the previously installed Windows Media Player 10 software to convert music on an audio CD into MP3 or WMA format as follows:

1. Open the Windows Media Player 10 Browser, then click on the “Rip” icon on the top tool bar. Insert a Music CD into the CD-Rom drive of your computer.

NOTE: For Windows ME and Windows 2000, please use the corresponding Windows Media Player for your computer to convert music on an audio CD into MP3 or WMA format.

2. Click on the “Tools” menu option at the top menu bar, then click on “Options”; the Option setting menu will appear. Click on Rip Music and set the Rip Music to the desired location on your computer. Then, set the desired format for the newly ripped music (MP3 format or Windows Media Audio format). Adjust the audio quality as desired. When finished, click “OK” to confirm the settings.
3. Click on the “Rip Music” icon to start ripping the music to your computer.
4. When the music tracks are ripped; connect the player to your computer. Open the “MTP Player” or “MMP8620” window and open the ripped music location window.
5. To add the transferred/ripped music files/songs to your player simply drag and drop the MP3 and/or WMA files into the “MTP Player” or “MMP8620” window.
6. When the files are finished loading into the player, you can follow the “Safely Remove Hardware” procedure as shown on page 33.



DOWNLOADING AND TRANSFERRING FILES (CONT.)

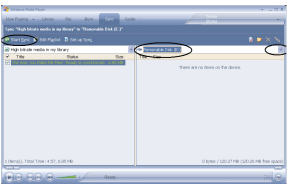
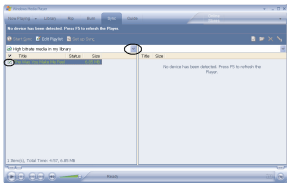
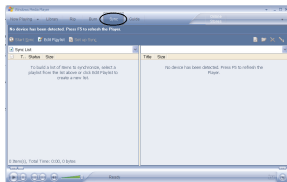
TRANSFERRING MP3/WMA/PHOTO FILES AND WMA FILES WITH DRM 9 OR DRM 10 USING WINDOWS MEDIA PLAYER 10 (FOR WINDOWS XP ONLY)

To transfer MP3/WMA/PHOTO/WMA files with DRM 9 or 10 to the player, follow the procedure described below using the previously installed WMP (Windows Media Player) 10. Before beginning the procedure, please connect the unit to the computer as previously described.

1. Open the "Windows Media Player Browser 10" and click on "Sync".
2. Click on the "Sync List" pull-down menu to locate the music files you wish to download. Then make sure to tick the box next to the files.
3. Select the Portable Device ("Removable Disk") that you want to copy to from the right side drop-down menu. Click "Start Sync" to start transferring music files to the player.
4. After finished transferring all the desired files to your unit, follow the "Safely Remove Hardware" procedure on page 33.

NOTES:

- For WMA files with DRM 10, you can only use WMP 10 to transfer files to your player.
- For WMA files with DRM 10, the files will not be played if you transfer the files into the mini SD card's memory. You must transfer the WMA files with DRM 10 to the player's internal memory for playback.
- For Windows ME and Windows 2000, please visit www.microsoft.com to download the corresponding Windows Media Player to transfer music files to the player.
- If the external card is inserted, the memory card indicator "■" will appear at the bottom of the display.
- If a song with the MyDJ feature is transferred to the unit, the MyDJ logo "♪" will appear in front of the file name on the unit.
- **VIDEO FILE TRANSFER:** Open My Computer and then "MTP Player," "Aptitude" or "MMP8620". There will be two directories present: Media and Data. "Drag and drop" the video file(s) into the Data directory; the transfer time will depend on the file size. After disconnecting and then connecting your player to the computer again, the video file(s) will be moved to the Media/Data directory.



DOWNLOADING AND TRANSFERRING FILES (CONT.)

CREATING A PLAYLIST USING WINDOWS MEDIA PLAYER 10 (FOR WINDOWS XP ONLY)

Follow the steps below to create a playlist in the Music menu, using WMP (Windows Media Player) 10:

1. Connect your player to the USB port on your computer as shown on page 7. Open WMP 10.
2. Go to the "Sync" page and click "Set Up Sync". There you can set up the specific synchronization for this unit.
3. Click "Synchronize Device Automatically" and select the playlist. For example, select "Music Added in the Last Month" and "Music Played the Most" and click "OK". WMP 10 will synchronize the selected playlist(s) to this unit automatically.
4. When the synchronization is finished, there will be a new playlist which you can find in the Music menu.

USING THE MyDJ PLUG-IN

The MyDJ Plug-In will open automatically when you start Windows Media Player 10 for the first time after installation. (If you don't have any songs in your WMP [Windows Media Player] library, you will first need to add some in order to use the MyDJ Plug-In.)

The first time you start the MyDJ Plug-In, you will be asked if you wish to save analysis information in your music files. This means your tracks will be analyzed using the MyDJ Plug-In so they will work with the MyDJ feature on this unit.

Press the green "START" to start the process to make your music MyDJ ready. You will now be able to see the progress of activating your music within the MyDJ Plug-In window.

Once the activation of your music files is complete, an inactive "START" will appear.

The windows can be closed/minimized with the close/minimize boxes at the top right-hand corner.

Extended Analysis of Your Music

By default, the MyDJ Plug-In will perform the fastest analysis of your music that it can. However, not all of the files within your collection may be recognized during this "quick analysis" process. In this case, you may want to use the Extended Analysis capability of the MyDJ Plug-In, which will ensure that all possible remaining files within your WMP library are ready to be used on this unit.

To enable Extended Analysis click the "Tools" menu from the MusicIP MyDJ Plug-In and then the "Options..." sub-menu. By checking the "Use Extended Analysis" checkbox and then clicking the "OK" button, all of your songs will be validated and prepared for use on this unit.

USING THE MyDJ PLUG-IN (CONTINUED)

The box that appears will display the total number of tracks you have in your WMP library, the number of tracks that are ready to be used on this unit and the number of tracks that could use further validation or extended analysis.

NOTE: Selecting a “Processor Load” of “Maximum” may significantly impact the performance of your computer. If you intend to use your computer while running “Extended Analysis” in the background, select “Low”.

Checking for Mixable Tracks

In order to use the MyDJ feature on this unit, you will need to add at least 25 tracks that have been analyzed using the MyDJ Plug-In. You can enable a column within WMP 10 that will indicate if the track is MyDJ ready by following the steps below:

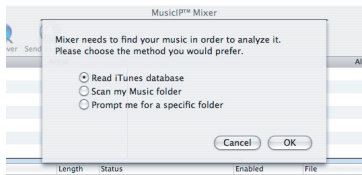
1. In WMP 10, right-click on one of the column headings within your library.
2. Click on “More...” at the very bottom of the list.
3. In the window that appears, ensure that there is a check next to “Custom 1”.
4. Click the “OK” button to save the preferences.
5. Within your library, scroll to the right until you see the “Custom 1” column.

USING THE MUSICIP MIXER

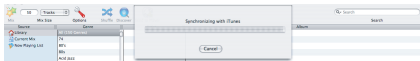
For Mac OS X

Step 1: Locate Music Files

The first time the MusicIP Mixer is run, it will prompt you to import music from your iTunes database, Music folder or from another source folder of your choice.



Based on your selection, tracks from the iTunes database, Music folder or other source will be imported into the MusicIP Mixer library.



Step 2: Analyze Your Music

Once the import process is complete, the MusicIP Mixer will analyze your tracks and save the data to a cache file on your computer. During the analysis process, the Mixer will detect your audio files' unique acoustic characteristics for use in creating playlists. Tracks will change from gray to black as they are being analyzed.

Step 3: Archive Analysis

You must save the analysis data to your audio files before transferring them to the device. To save analysis data, select the track(s) within the Mixer, Ctrl-click, and choose "Archive Analysis into Music". When analysis information is saved to your files, they are

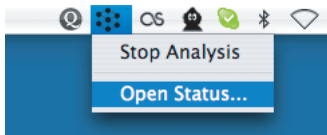
USING THE MUSICIP MIXER (CONTINUED)

slightly altered to store MusicIP tags. Once the analysis data has been saved to your tracks, they are ready to be used for instant playlist creation on your device.

3	Frolic Room	3:34	Identified (to be verified)	<input checked="" type="checkbox"/>	/Users/rowktaivo/Music/iTunes/iTunes Music/311/Don't Tread On Me/Frolic.R
10	Other Side of Things	3:08	Identified (to be verified)	<input checked="" type="checkbox"/>	/Users/rowktaivo/Music/iTunes/iTunes Music/11/Evelyn/Other Side of Things.mp
10	Amber	3:25	Identified (to be verified)	<input checked="" type="checkbox"/>	/Users/rowktaivo/Music/iTunes/iTunes Music/311/From Chaos/10 Amber.m4a
	Little Sign of Love	4:10			/Users/rowktaivo/Music/iTunes/iTunes Music/5th Element/Soundtrack/10 Little
4	S.O.S.	3:21			/Users/rowktaivo/Music/iTunes/iTunes Music/ABBA/ABBA/04 S.O.S.m4a
	Mamma mia	3:33			/Users/rowktaivo/Music/iTunes/iTunes Music/ABBA/Gold/Mamma mia.m4a
	Dancing Queen	3:51			/Users/rowktaivo/Music/iTunes/iTunes Music/ABBA/Unknown Album/Dancing
	ABBA - Knowing Me, Knowing You	4:00			/Users/rowktaivo/Music/iTunes/iTunes Music/ABBA/Unknown Album/ABBA - K
2	Take a chance on me	4:04			/Users/rowktaivo/Music/iTunes/iTunes Music/ABBA/New Title (32)02 Take a c
7	Can't Stop Rock 'n' Roll	4:02			/Users/rowktaivo/Music/iTunes/iTunes Music/AC/DC/Siff Upper Lip/Can't Sto
1	TV Not	3:01			/Users/rowktaivo/Music/iTunes/iTunes Music/The Adored/The Adored EP/01 T
2	Chemistry	2:25			/Users/rowktaivo/Music/iTunes/iTunes Music/The Adored/The Adored EP/02 C
3	She's A Boy	2:42	Identified (to be verified)	<input checked="" type="checkbox"/>	/Users/rowktaivo/Music/iTunes/iTunes Music/The Adored/The Adored EP/03 S
4	I Don't Care	2:25	Identified (to be verified)	<input checked="" type="checkbox"/>	/Users/rowktaivo/Music/iTunes/iTunes Music/The Adored/The Adored EP/04 I

Viewing Analysis Status (Optional)

To view the progress of the analysis process, click on the MusicIP analysis icon in your OS X menu bar and select "Open Status...". You can stop the analysis process by selecting "Stop Analysis".



The analysis status window displays the number of tracks that have analysis remaining and the amount of time remaining for each analysis process. You may close the analysis status window at any time by clicking the "X" icon in the upper left-hand corner.

Step 4: Transfer Analyzed Tracks to Your Device

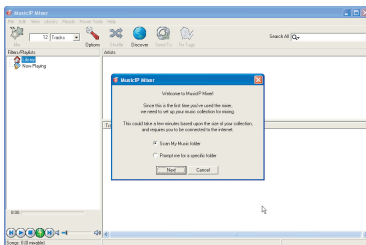
When done, transfer analyzed tracks to your device.

USING THE MUSICIP MIXER (CONTINUED)

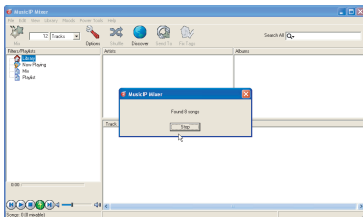
For Windows XP

Step 1: Locate Music Files

The first time the MusicIP Mixer is run, it will prompt you to import music from your My Music folder or from another source folder of your choice. Please note that if you have either iTunes or Winamp installed on your computer, options for importing music from either of these programs' libraries will additionally appear.



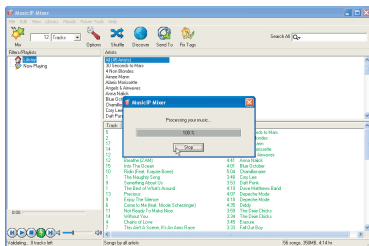
Based on your selection, tracks from the Music folder or other source will be imported into the MusicIP Mixer library.



USING THE MUSICIP MIXER (CONTINUED)

Step 2: Analyze Your Music

Once the import process is complete, the MusicIP Mixer will analyze your tracks and save the data to a cache file on your computer. During the analysis process, the Mixer will detect your audio files' unique acoustic characteristics for use in creating playlists. You may stop the analysis process by selecting "Stop". You will know when a track within your collection has been successfully analyzed as it will turn from black to green.

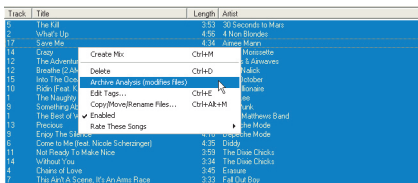


Step 3: Archive Analysis

You must save the analysis data to your audio files before transferring them to the device. To save analysis data, select the track(s) within the Mixer, right-click, and choose "Archive Analysis into Music". When analysis information is saved to your files, they are slightly altered to store MusicIP tags. Once the analysis data has been saved to your tracks, they are ready to be used for instant playlist creation on your device. (Please see illustration on the following page.)

USING THE MUSICIP MIXER (CONTINUED)

Track	Title	Length	Artist
6	The Kill	3:53	30 Seconds To Mars
2	What's Up	4:50	4 Non Blondes
17	Save Me	4:34	Armin Van Buuren
14	Crazy		CitHM
12	The Adrenaline		CitHM
12	Breathin' (2 AM)		CitHM
18	Into The Dark		CitHM
18	Ride (Feat. J		CitHM
1	The Naughty		CitHM
3	Something As		CitHM
1	The Best of		CitHM
13	Precious		CitHM
3	Enjoy The Cl		CitHM
6	Come to Me (feat. Nicole Scherzinger)	4:20	Diddy
11	Not Ready To Make a Nice	3:53	The Disc Checks
14	Without You	3:34	The Disc Checks
4	Chain of Love	3:45	Stevie N
7	This Ain't A Scene, It's An Arms Race	3:33	Fall Out Boy



Viewing Analysis Status (Optional)

Analysis progress details are located in the bottom left corner of the Mixer's status bar. This data is visible at any time during the analysis process.

Step 4: Transfer Analyzed Tracks to Your Device

To transfer analyzed tracks onto your device, please see page 20.

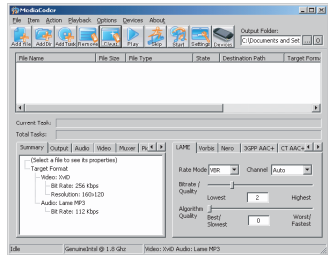
USING MEDIACODER

You can use the previously installed MediaCoder to convert MPG, MPG4, ASF, AVI and WMV files to AVI files supported by the player.

1. Open the previously installed MediaCoder program.
2. Change the Interface mode from Simple mode to Normal mode in the Options>User Interface Mode pull-down menu.
3. Click the “Add file” icon to add files for conversion. In the “Add file” window select the source file you want to convert and click the “Open” button. The file is now added to the “convert” window. Repeat this procedure if you want to add other files for conversion.
4. Set up the Destination Path for the converted files. In the “Output Folder” window, type the path of the directory where the converted files will be saved.
5. Set up the advanced conversion settings. There are many items in the advanced settings, most of them do not need to be changed; keep the default settings. Make sure that the Video and Picture options are configured as below:
Video: Backend: MEncoder; Codec: XviD; Format: AVI
Picture: Resize: 176x144, 208 x 176, 320x240
6. After selecting all the setting options, click “Start” to begin the conversion.
7. When “Transcoding Completed Information” appears, the file has been converted.
8. Now you can convert additional files according to the above procedures, if desired.

NOTE: See page 20 for how to “drag and drop” files to the unit.

Download from www.Somanuals.com, All Manuals Search And Download.



SAFELY REMOVE HARDWARE

SAFELY REMOVING YOUR PLAYER FROM THE COMPUTER

NOTE: To avoid damage to your player or data loss, always follow the procedure listed below before disconnecting your player from the USB port on your computer.

Using your mouse, double click the "Safely Remove Hardware" icon on the task bar.

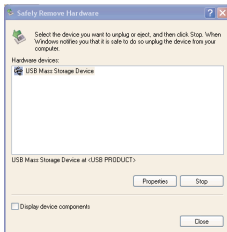
From the "Safely Remove Hardware" window (shown lower right), select "USB Mass Storage Device" and click the "Stop" button. The "Stop a Hardware Device" window will pop-up. Click "OK". When the "Safe to Remove Hardware" window is displayed, you may remove the player from the USB cable or remove the USB cable from the computer.

NOTES:

- If the "Safely Remove Hardware" icon is not displayed on the task bar, please double click on My Computer. Right click on "Removable Disk" and left click on "Eject". Then it is safe to remove the player from the computer.
- If you are using Windows XP and the Windows Media Player 10 software is already installed, then you do not need to follow the above "Safely Remove Hardware" procedure.

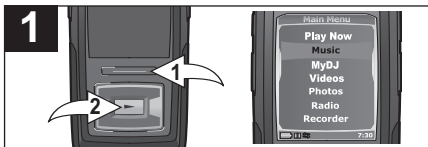


'Safely Remove Hardware' icon



GENERAL OPERATION

TURNING THE POWER ON/OFF



To turn the unit on, press the Enter/Play/Pause ►|| button ②; the Memorex screen will appear for a few moments followed by the Main menu. To turn the unit off, press and hold the Menu button ①. Do not release the Menu button ① until the unit turns off. Wait a minute after turning off the unit to turn on the unit again.

NOTE: The Memorex screen will take several seconds to several minutes to update the player's library depending on the number of songs that you have transferred to the player. When done, the Music Player menu will appear in the display.

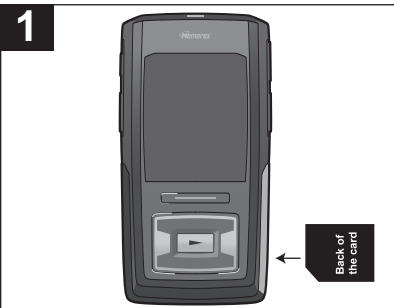
MENU BUTTON



At any time, press the Menu button to go back to the previous screen/Main menu.

NOTE: While you are in the Main menu, you can press the Navigation Left/Skip-Search ◀ button to enter the Now Playing screen. You can also press the Navigation Right/Skip-Search ▶ or Enter/Play/Pause ►|| button to advance to the next level in the menus based on your selection.

INSERTING/REMOVING AN EXTERNAL MEMORY CARD (Mini SD)



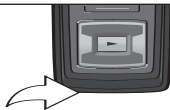
TO AVOID DAMAGE, make sure the unit is OFF before inserting or removing the card. The mini SD Memory Card slot is located under the mini SD Memory Card Slot cover. Insert a mini SD memory card (not included) up to 2GB, with the back of the card facing up as shown. To remove the mini SD memory card, push the edge of the card, then the card will spring out. Carefully remove the card.

NOTE: If the external card is inserted, the memory card indicator "■" will appear in the bottom of the display. **DO NOT** operate the unit until "Loading" disappears from the screen.

GENERAL OPERATION (CONTINUED)

HEADPHONES JACK

1



Plug the headphones (included) into the Headphones jack on the bottom of the unit.

VOLUME BUTTONS

1



To control the volume, simply press the Volume Up/Down button during playback.

NOTE: While changing the volume, the volume "pop up" indicator will be overlaid across the bottom of the existing screen (except in Video Playback mode) and will slide off screen after three seconds if neither Volume button is pressed. You can close the volume pop-up by pressing the Enter/Play/Pause ►||, Navigation Right/Skip-Search ►|, Left/◀, Up, Down or Menu button.

GENERAL OPERATION (CONTINUED)

HOLD SWITCH



Slide the Hold switch to the Lock position (down) to lock the buttons; "Locked" will appear briefly and then the Lock icon will appear in the lower left corner of the screen. This is useful, for example, when you do not want the file changed by accidentally pressing a button. Slide the Hold switch to the Unlock position (up) to cancel the Hold function; "Unlocked" will appear briefly and then the Lock icon will disappear from the lower right corner of the screen.

DEFAULT/FULL SCREEN

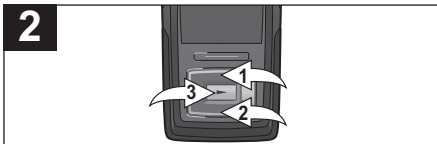
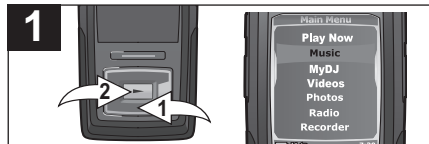


While in Music or Photo Playback mode, press the Navigation Down button to toggle between Default and Full Screen format.

OPERATION—MUSIC PLAYBACK MODE

TO LISTEN TO MP3s/WMA's

This unit supports the following audio formats: MP3, MPEG 1/2/2.5 Layer 3 with a bit rate of 32-320 kbps, WMA files or WMA with DRM 9 or 10 with a bit rate of 48-192 kbps and MPEG-4s.



Turn the unit on and access the main menu as described on page 34. Select Music using the Navigation Down button ❶, followed by the Enter/Play/Pause ►|| button ❷.

Use the Navigation Up ❶ and/or Down ❷ buttons to browse through the music categories: PlayQueue, Songs, Artists, Albums, Playlists (created by WMP 10) or Genres. Then press the Enter/Play/Pause ►|| button ❸ to select that category. A list will appear separating the files into the selected search criteria; see the following page for more details.

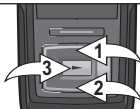
NOTE:

- For the Playlists option, please see page 24 for how to create playlist(s) with WMP 10.

CONTINUED ON THE NEXT PAGE

OPERATION—MUSIC PLAYBACK MODE (CONTINUED)

3



To browse through your music, see more details below:

PlayQueue: “Play All”, “Clear All”, “Clear Track” and the song’s name will appear in the display. Select Play All or the desired song using the Navigation Up **1** and/or Down **2** buttons then press the Enter/Play/Pause **3** button **3** to start playback. The unit will play that song and the songs following it.

Songs: The song’s name will appear in the display. Select Play All or the desired song using the Navigation Up **1** and/or Down **2** buttons then press the Enter/Play/Pause **3** button **3** to start playback.

Artists: All Artists will be shown in the display. Select Play All or the desired Artist using the Navigation Up **1** and/or Down **2** buttons then press the Enter/Play/Pause **3** button **3**. All the Artist’s albums will appear; select Play All or the desired album using the Navigation Up **1** and/or Down **2** buttons then press the Enter/Play/Pause **3** button **3**. Then, select Play All or the desired song using the Navigation Up **1** and/or Down **2** buttons then press the Enter/Play/Pause **3** button **3** to start playback.

Albums/Genre: All the albums/genres will appear. Select Play All or the desired album/genre using the Navigation Up **1** and/or Down **2** buttons then press the Enter/Play/Pause **3** button **3**. (In the Genre menu, you must then select the desired album.) Then, select Play All or the desired song using the Navigation Up **1** and/or Down **2** buttons then press the Enter/Play/Pause **3** button **3** to start playback.

Playlists (if created): All Playlists will be shown in the display. Select Play All or the desired Playlist using the Navigation Up **1** and/or Down **2** buttons then press the Enter/Play/Pause **3** button **3**. All the songs will appear; select Play All or the desired song using the Navigation Up **1** and/or Down **2** buttons then press the Enter/Play/Pause **3** button **3** to start playback.

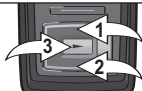
NOTES:

- See pages 20-24 for information on uploading MP3/WMA files to this unit.
- While you are browsing your music, you can press the Navigation Left/Skip–Search **4** or Menu button to return to the previous menu. You can also press the Navigation Right/Skip–Search **5** button to advance to the next level in the menus based on your selection. However, if the selection is MyDJ ready, the player will create a djMix.
- You can pause playback at anytime by pressing the Enter/Play/Pause **3** button; the Pause icon will appear on screen and the song will remain paused until the button is pressed again.
- To set the Play Mode (Shuffle, Repeat All, Repeat One) setting refer to page 60.
- **(AUTO RESUME, for internal memory only):** Each time you exit the Music Playback mode or turn the unit off, when the unit is turned back on or you enter the Music Playback mode again, this unit will resume at the beginning of the last track which was playing before turning the power off or changing mode.

OPERATION—MUSIC PLAYBACK MODE (CONTINUED)

TO DELETE SONGS FROM THE PLAYQUEUE

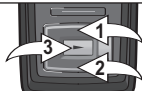
1



Enter the PlayQueue submenu as described on page 37.

To clear all tracks in the queue, use the Navigation Up **1** and/or Down **2** button to select Clear All and then press the Enter/Play/Pause **▶||** button **3**.

2

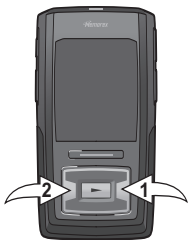


To clear one track at a time from the queue, use the Navigation Up **1** and/or Down **2** button to select Clear Track and then press the Enter/Play/Pause **▶||** button **3**. Then, use the Navigation Up **1** and/or Down **2** button to select the song to clear and then press the Enter/Play/Pause **▶||** button **3**. Repeat this step to delete additional songs.

OPERATION—MUSIC PLAYBACK MODE (CONTINUED)

HIGH-SPEED MUSIC SEARCH

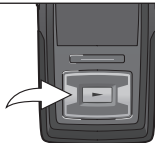
1



During playback, press and hold the Navigation Right/Skip-Search ►► ① or Left/◀◀ ② button to move the player forward or backward within a file to locate a specific musical passage. The player will move forward or backward at high speed as long as the button is held. When you release the button, normal playback will resume.

FORWARD/REVERSE SKIP

1



During playback, press the Navigation Left/Skip-Search ◀◀ button to move the player back to the beginning of the currently playing file. Press the Navigation Left/Skip-Search ◀◀ button repeatedly to move the player back to lower-numbered files.

2



During playback, press the Navigation Right/Skip-Search ►► button to advance the player to the beginning of the next file. Press the Navigation Right/Skip-Search ►► button repeatedly to advance the player to higher-numbered files.

IMPORTANT NOTE:

- For the MyDJ feature, please see the page 45.

OPERATION—MUSIC PLAYBACK MODE (CONTINUED)

MUSIC CONTEXTUAL MENU—EQUALIZER

1



While in Music Playback mode (Now Playing screen), press the Navigation Up button to open the Music Contextual menu.

2



Scroll to the “Equalizer” option using the Navigation Up **1** and/or Down **2** buttons.

3



Select a desired “Equalizer” setting (None, Extra Bass, Rock, Jazz, Classical, Pop or Custom EQ) using the Navigation Right/Skip–Search **1** or Left **2** button. Select the Custom EQ option by pressing the Enter/Play/Pause **3** button.

NOTE: For the Custom EQ setting, please refer to page 59.

NOTE: Setting an option in the Music Contextual menu, pressing the Menu button or waiting three seconds without any activity will close the Music Contextual menu.

OPERATION—MUSIC PLAYBACK MODE (CONTINUED)

MUSIC CONTEXTUAL MENU—PLAY MODE

1



While in Music Playback mode (Now Playing screen), press the Navigation Up button to open the Music Contextual menu.

2



Scroll to “Play Mode” using the Navigation Up ❶ and/or Down ❷ buttons.

3



Select a desired “Play Mode” setting (Normal, Shuffle [to randomly play all of the songs], Repeat All [to repeat all songs continuously] or Repeat One [to repeat the selected song continuously]) using the Navigation Right/Skip-Search ❶ or Left/❷ button, followed by the Enter/Play/Pause ❸ button ➊ to confirm.

NOTES:

- Setting an option in the Music Contextual menu, pressing the Menu button or waiting three seconds without any activity will close the Music Contextual menu.
- During playback, if the Shuffle mode is activated, you can browse the Shuffle sequence in the Play Queue.
- Once you change from Shuffle mode to Normal, Repeat All or Repeat One mode, the playback sequence in the Play Queue will still reflect the Shuffle mode. You will need to select Songs, Artists, Albums, Playlists or Genre to playback again and resume to normal sequence.

OPERATION—MUSIC PLAYBACK MODE (CONTINUED)

MUSIC CONTEXTUAL MENU—COLOR THEME

1



While in Music Playback mode (Now Playing screen), press the Navigation Up button to open the Music Contextual menu.

2



Scroll to “Color Theme” using the Navigation Up ❶ and/or Down ❷ buttons.

3



Select a desired “Color Theme” setting (Blue, Cyan, Green, Gold, Purple or Red) using the Navigation Right/Skip-Search ❶ or Left ❷ button.

NOTE: Setting an option in the Music Contextual menu, pressing the Menu button or waiting three seconds without any activity will close the Music Contextual menu.

OPERATION—MUSIC PLAYBACK MODE (CONTINUED)

MUSIC CONTEXTUAL MENU—CREATE djMix

1



While in Music Playback mode (Now Playing screen), press the Navigation Up button to open the Music Contextual menu.

2



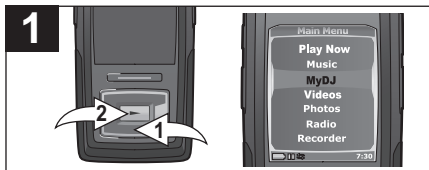
Scroll to “Create djMix” using the Navigation Up ❶ and/or Down ❷ buttons, followed by the Enter/Play/Pause ❸ button to create a djMix (playlist) based on the current song.

NOTE: Setting an option in the Music Contextual menu, pressing the Menu button or waiting three seconds without any activity will close the Music Contextual menu.

OPERATION—MUSIC PLAYBACK MODE (CONTINUED)

MyDJ offers an exciting, new way to enjoy your music! Your music instantly becomes more usable and fun, allowing you to make mixes on the device itself, wherever and whenever you want. By using the djScan, djMix and djMoods options described on the next four pages, you can get an amazing playlist that includes tracks from every corner of your collection—instantly. MyDJ will change the way you listen to music!

USING THE djScan FEATURE

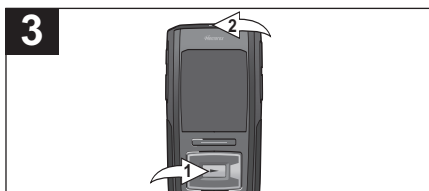


Turn the unit on and access the main menu as described on page 34. Select MyDJ using the Navigation Down button ❶, followed by the Enter/Play/Pause ►|| button ❷.



Press the Enter/Play/Pause ►|| button again to select djScan. The player will enter djScan mode.

NOTE: You can also enter djScan mode by pressing and holding the MyDJ button at any time, except Radio playback, Radio/Voice Recording or Video/Photo playback modes.



Press the Enter/Play/Pause ►|| button ❶ or MyDJ button ❷ to create a playlist based on the current song at any time.

PLEASE SEE NOTES ON THE NEXT PAGE

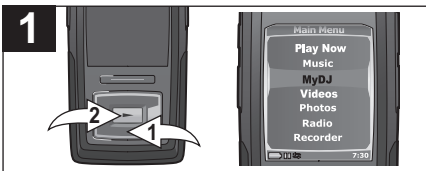
OPERATION–MUSIC PLAYBACK MODE (CONTINUED)

NOTES:

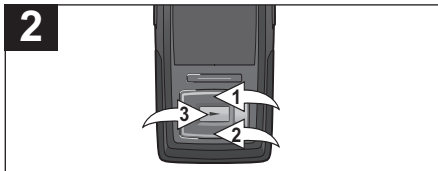
- **IMPORTANT!:** The unit must have at least 25 MyDJ ready songs for the MyDJ functions to work.
- Maximum 20 songs will be placed into the MyDJ playlists.
- You can also press the MyDJ button with a track selected in the Browse Music menus or in Music Playback mode (with or without the Music Contextual menu open) to create a djMix based on the track selected/playing.
- **Scan Mode:** While in Scan mode, the unit will play a few seconds of a song and “djScan” will appear in the display, until you exit the Scan mode by pressing the Menu button or create a playlist by pressing the MyDJ button or Enter/Play/Pause ►|| button.
- For MyDJ information, enter the MyDJ menu as directed in Step 1 on the previous page, scroll to About MyDJ using the Navigation Up and/or Down buttons, followed by the Enter/Play/Pause ►|| button to select it.

OPERATION—MUSIC PLAYBACK MODE (CONTINUED)

USING THE djMix FEATURE



Turn the unit on and access the main menu as described on page 34. Select MyDJ using the Navigation Down button ❶, followed by the Enter/Play/Pause ►|| button ❷.



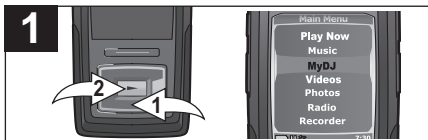
Scroll to djMix using the Navigation Up ❶ and/or Down ❷ buttons, followed by the Enter/Play/Pause ►|| button ❸ to select it. The player will enter djMix Browse mode. Follow the Browse Music (All Songs, Albums, Artists) instructions on page 38 to select a desired track. Press the Enter/Play/Pause ►|| button ❸ (or the Navigation Right/Skip-Search ► button) and djMix will create a playlist based on that song.

NOTES:

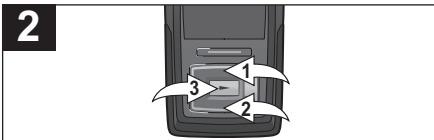
- **IMPORTANT!:** The unit must have at least 25 MyDJ ready songs for the MyDJ functions to work.
- Maximum 20 songs will be placed into the MyDJ playlists.
- **djMix Mode:** You can also press the MyDJ button, with a MyDJ ready song playing or selected, to create a djMix.
- For MyDJ information, enter the MyDJ menu as directed in Step 1, scroll to About MyDJ using the Navigation Up and/or Down buttons, followed by the Enter/Play/Pause ►|| button to select it.

OPERATION—MUSIC PLAYBACK MODE (CONTINUED)

USING THE djMoods FEATURE



Turn the unit on and access the main menu as described on page 34. Select MyDJ using the Navigation Down button ❶, followed by the Enter/Play/Pause ►|| button ❷.



Scroll to djMoods using the Navigation Up ❶ and/or Down ❷ buttons, followed by the Enter/Play/Pause ►|| button ❸ to select it. Scroll to the desired Energy (Energy 1- 5) using the Navigation Up ❶ and/or Down ❷ buttons, followed by the Enter/Play/Pause ►|| button ❸ to select it. MyDJ will create a playlist based on that Mood.

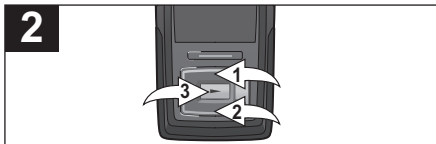
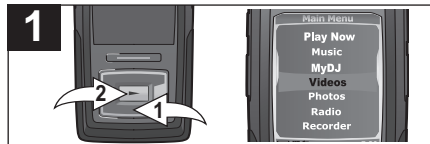
NOTES:

- **IMPORTANT!**: The unit must have at least 25 MyDJ ready songs for the MyDJ functions to work.
- Maximum 20 songs will be placed into the MyDJ playlists.
- For MyDJ information, enter the MyDJ menu as directed in Step 1, scroll to About MyDJ using the Navigation Up and/or Down buttons, followed by the Enter/Play/Pause ►|| button to select it.
- djMoods allows the user to listen to songs based on the energy level of the music. The technology sorts the music on the device from lowest Level 1 to highest Level 5. Depending on the types of songs loaded on the device, the range from 1-5 will vary accordingly. In general, the lower level music will be more calm and relaxing whereas higher level music will be more lively music. One possible use for this feature is during a jog. While warming up, you may want to listen to Level 2. During the jog, you may want to listen to Level 3 or 4 and then while running your fastest, you may want to listen to Level 5. During cool down, you could then enjoy music at Level 1.

OPERATION—VIDEO PLAYBACK MODE

TO WATCH VIDEOS

This unit supports the following video formats: **WMV**—WMV 9 (simple profile, 220 x 176 resolution, 30 fps, 384 kbps max) + WMA 9 (sample rate of 8-48 kHz), **MPEG-4**—AVI (220 x 176 resolution, 30fps, 768 kbps max) + MP3



Turn the unit on and access the main menu as described on page 34. Select Video using the Navigation Down button ❶, followed by the Enter/Play/Pause ►|| button ❷.

Use the Navigation Up ❶ and/or Down ❷ buttons to browse through the videos. Then press the Enter/Play/Pause ►|| button ❸ to begin playback.

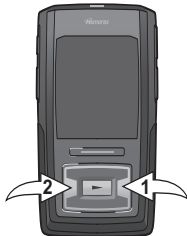
NOTES:

- See pages 20-21 and 23 for information on uploading video files to this unit.
- You can pause playback at anytime by pressing the Enter/Play/Pause ►|| button; the Pause icon will appear on screen and the song will remain paused until the button is pressed again.
- This unit will play the selected video, then all the following videos.

OPERATION-VIDEO PLAYBACK MODE (CONTINUED)

HIGH-SPEED VIDEO SEARCH

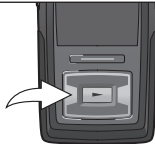
1



During playback, press and hold the Navigation Right/Skip-Search ►► or Left/◄◄ button to move the player forward or backward within a video to locate a specific scene. The player will move forward or backward at high speed as long as the button is held. (During high-speed search, the video track progress bar will appear on the bottom of the display.) When you release the button, normal playback will resume.

FORWARD/REVERSE SKIP

1



During playback, press the Navigation Left/Skip-Search ◄◄ button to move the player back to the beginning of the currently playing file. Press the Navigation Left/Skip-Search ◄◄ button repeatedly to move the player back to lower-numbered files.

2



During playback, press the Navigation Right/Skip-Search ►► button to advance the player to the beginning of the next file. Press the Navigation Right/Skip-Search ►► button repeatedly to advance the player to higher-numbered files.

NOTE:

- In Video playback mode, if you change the Orientation setting to Landscape Left or Right, press the Navigation Right/Skip-Search ►► or Left/◄◄ button to search or skip the file.

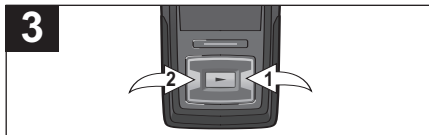
OPERATION—PHOTO PLAYBACK MODE

TO VIEW PHOTOS—This unit supports baseline JPEGs.



Turn the unit on and access the main menu as described on page 34. Select Photos using the Navigation Down button **1**, followed by the Enter/Play/Pause **▶||** button **2**.

Use the Navigation Up **1** and/or Down **2** buttons to select between Slideshow, Thumbnails or to select a particular photo. If you have selected a particular photo, press the Enter/Play/Pause **▶||** button **3** to view it. (For Slideshow and Thumbnails, please see the next page.)



During photo playback, press the Navigation Right/Skip–Search **▶||** **1** or Left **◀** **2** button to skip to the next or previous photo.

At any time, press the Menu button to go back to the previous screen/main menu.

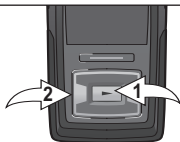
NOTES:

- You can also toggle between slideshow auto and manual mode by pressing the Enter/Play/Pause **▶||** button.
- See pages 20–21 and 23 for information on uploading photo files to this unit.
- You can listen to music while viewing the photos, if desired.

OPERATION—PHOTO PLAYBACK MODE (CONTINUED)



THUMBNAIL VIEW

1



2



If you scrolled to Thumbnails in Step 2 on the previous page, press the Enter/Play/Pause ►|| button ; a thumbnail view of the photos will appear in the display. Use the Navigation Up, Down, Right/Skip-Search ►► or Left/◀◀  buttons to browse the photos.

Press the Enter/Play/Pause ►|| button to view the desired photo.

SLIDESHOW VIEW

1



If you scrolled to Slideshow in Step 2 on the previous page, press the Enter/Play/Pause ►|| button; the unit will enter Slideshow mode to play all supported photos.

NOTE:

- To exit Slideshow mode, press the Menu button.

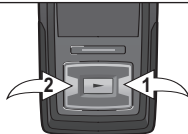
OPERATION—FM RADIO MODE

TO LISTEN TO THE FM RADIO

1



2



Turn the unit on and access the main menu as described on page 34. Select Radio using the Navigation Down button ❶, followed by the Enter/Play/Pause ►|| button ❷.

Select a station by pressing, or pressing and holding to search more quickly, the Navigation Right/Skip-Search ►|| ❶ or Left/◀◀ ❷ button. When a station is broadcasting in stereo, "STEREO" will appear in the display.

3



Press the VOLUME Up/Down buttons to increase or decrease the volume.

ANTENNA

FM—The headphones act as an antenna for FM. Extend the headphone wire for best FM reception.

OPERATION—FM RADIO MODE (CONTINUED)

TO ADD PRESETS (UP TO 20)

1



While in FM Playback mode, and with a desired station selected, press and hold the Enter/Play/Pause ►|| button and then release to save the station as Preset 1 (if no stations have been saved yet).

2



Repeat Step 1 to add up to 20 presets. After you have saved Preset 20, the unit will start saving over Preset 1, etc.

TO LOAD PRESETS

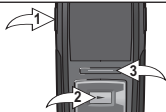
1



While in FM Playback mode, use the Navigation Up ① and/or Down ② buttons to browse to the desired preset.

TO RECORD THE FM RADIO

1



While in FM Playback mode, press the Record button ① to start recording the desired station. Press the Enter/Play/Pause ►|| button ② to pause recording, and press again to resume recording. Press the Record button ① to stop recording and start a new recording. Press the Menu button ③ to stop and exit Record mode.

NOTE:

- See page 56 for how to access the radio recordings you have created.

OPERATION-RECORDER MODE

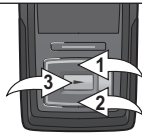
TO CREATE A VOICE RECORDING

1



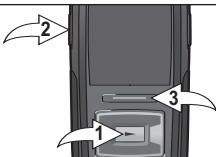
Turn the unit on and access the main menu as described on page 34. Select Recorder using the Navigation Down button ❶, followed by the Enter/Play/Pause ►|| button ❷.

2



Use the Navigation Up ❶ and/or Down ❷ buttons to select Record Voice. Then press the Enter/Play/Pause ►|| button ❸ to select.

3



Speak into the microphone and the player will create a voice recording. Press the Enter/Play/Pause ►|| button ❶ to pause recording, and press again to resume recording. Press the Record button ❷ to stop recording and start new recording. Press the Menu button ❸ to stop and exit Record mode.

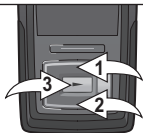
NOTES:

- You can also enter Voice Recorder mode, and create a new voice recording, by pressing the Record button while in any menu or while in Music/Video/Photo/Recording Playback mode.
- Press and hold the Navigation Right/Skip-Search ►|| button to start a new voice recording track while in Create Voice Recording mode.
- See page 56 for how to access the voice recordings you have created.

OPERATION—RECORDER MODE (CONTINUED)

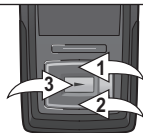
TO DELETE A RECORDING

1



Access the Recorder menu as described on the previous page. Use the Navigation Up **1** and/or Down **2** buttons to select Delete File, followed by the Enter/Play/Pause **▶||** button **3**.

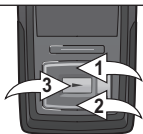
2



Use the Navigation Up **1** and/or Down **2** buttons to select the desired recording to delete. Then press the Enter/Play/Pause **▶||** button **3** to select. Repeat this step to delete additional recordings.

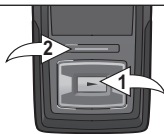
TO LISTEN TO A RECORDING

1



Access the Recorder menu as described on the previous page. Use the Navigation Up **1** and/or Down **2** buttons to select the desired recording (voice/radio), followed by the Enter/Play/Pause **▶||** button **3** to begin playback.

2



Press the Enter/Play/Pause **▶||** button **1** to pause playback, and press again to resume playback. Press the Menu button **2** to exit Recording Playback mode.

NOTE:

- Pause, Forward/Skip and High-Speed Search work the same way in Recording Playback mode as they do in Music Playback mode. See pages 38 and 40 for more details.

SETTINGS MENU

SETTING THE COLOR THEME

1



Turn the unit on and access the main menu as described on page 34. Select Settings using the Navigation Down button ❶, followed by the Enter/Play/Pause ►|| button ❷.

2



Press the Enter/Play/Pause ►|| button to select "Color Theme".

3



Select a desired "Color Theme" setting (Blue, Cyan, Green, Gold, Purple or Red) using the Navigation Up ❶ and/or Down ❷ buttons, followed by the Enter/Play/Pause ►|| button ❸ to confirm.

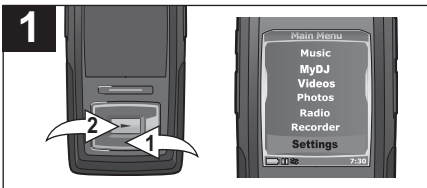
4



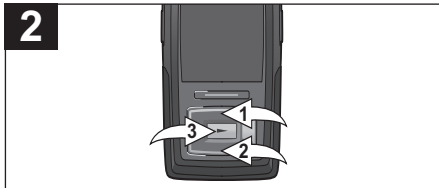
Press the Menu button to go back to the Main menu.

SETTINGS MENU (CONTINUED)

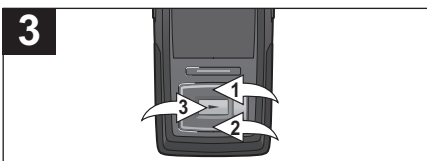
SETTING THE ORIENTATION



Turn the unit on and access the main menu as described on page 34. Select Settings using the Navigation Down button ❶, followed by the Enter/Play/Pause ►|| button ❷.

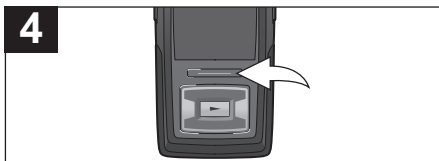


Scroll to "Orientation" using the Navigation Up ❶ and/or Down ❷ buttons, followed by the Enter/Play/Pause ►|| button ❸ to select it.



Select a desired "Orientation" setting (Portrait, Landscape Left or Landscape Right) using the Navigation Up ❶ and/or Down ❷ buttons, followed by the Enter/Play/Pause ►|| button ❸ to confirm.

NOTE: The Navigation button functions will rotate to match the "Orientation" setting that you have selected.

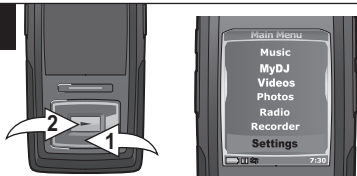


Press the Menu button to go back to the Main menu.

SETTINGS MENU (CONTINUED)

SETTING THE EQUALIZER

1



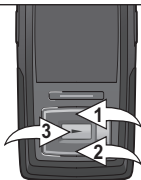
Turn the unit on and access the main menu as described on page 34. Select Settings using the Navigation Down button ❶, followed by the Enter/Play/Pause ►|| button ❷.

2



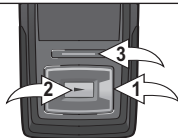
Scroll to "Equalizer" using the Navigation Up ❶ and/or Down ❷ buttons, followed by the Enter/Play/Pause ►|| button ❸ to select it.

3



Select a desired "Equalizer" setting (None, Extra Bass, Rock, Jazz, Classical, Pop or Custom EQ) using the Navigation Up ❶ and/or Down ❷ buttons, followed by the Enter/Play/Pause ►|| button ❸ to confirm.

4

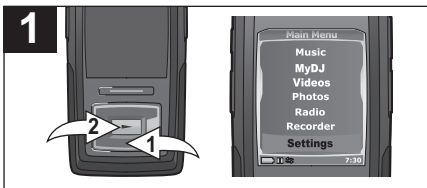


If you selected Custom EQ, adjust the Bass using the Navigation Right/Skip-Search ►|| or Left◀◀ ❶ button. Press the Navigation Down button ❶ to go to Treble.

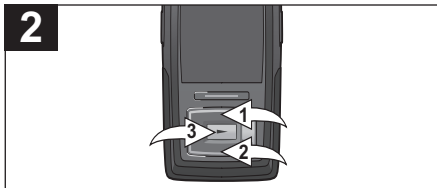
Adjust the Treble using the Navigation Right/Skip-Search ►|| or Left◀◀ ❶ button, followed by the Enter/Play/Pause ►|| button ❷ to confirm. Press the Menu button ❸ to go back to the Main menu.

SETTINGS MENU (CONTINUED)

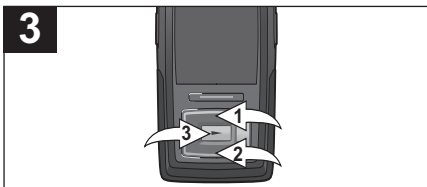
SETTING THE PLAY MODE



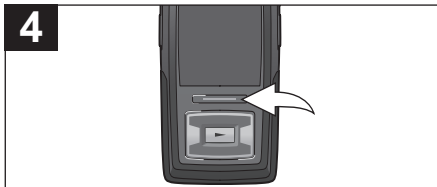
Turn the unit on and access the main menu as described on page 34. Select Settings using the Navigation Down button **1**, followed by the Enter/Play/Pause **▶||** button **2**.



Scroll to "Play Mode" using the Navigation Up **1** and/or Down **2** buttons, followed by the Enter/Play/Pause **▶||** button **3** to select it.



Select a desired "Play Mode" setting (Normal, Shuffle [to randomly play all of the songs], Repeat All [to repeat all songs continuously] or Repeat One [to repeat the selected song continuously]) using the Navigation Up **1** and/or Down **2** buttons, followed by the Enter/Play/Pause **▶||** button **3** to confirm.



Press the Menu button to go back to the Main menu.

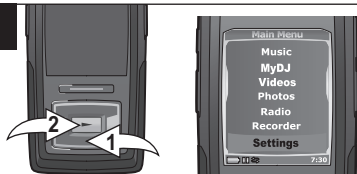
NOTES:

- During playback, if the Shuffle mode is activated, you can browse the Shuffle sequence in the Play Queue.
- Once you change from Shuffle mode to Normal, Repeat All or Repeat One mode, the playback sequence in the Play Queue will still reflect the Shuffle mode. You will need to select Songs, Artists, Albums, Playlists or Genre to playback again and resume to normal sequence.

SETTINGS MENU (CONTINUED)

SETTING THE BRIGHTNESS

1



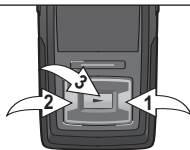
Turn the unit on and access the main menu as described on page 34. Select Settings using the Navigation Down button ❶, followed by the Enter/Play/Pause ►|| button ❷.

2



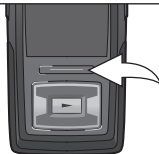
Scroll to "Brightness" using the Navigation Up ❶ and/or Down ❷ buttons, followed by the Enter/Play/Pause ►|| button ❸ to select it.

3



Select a desired "Brightness" setting (10-100%) using the Navigation Right/Skip-Search ►|| ❶ or Left/◀◀ ❷ buttons, followed by the Enter/Play/Pause ►|| button ❸ to confirm.

4

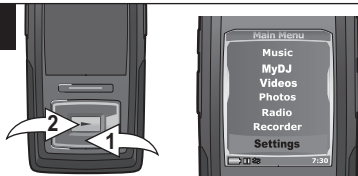


Press the Menu button to go back to the Main menu.

SETTINGS MENU (CONTINUED)

SETTING THE POWER SAVINGS

1



Turn the unit on and access the main menu as described on page 34. Select Settings using the Navigation Down button ❶, followed by the Enter/Play/Pause ►|| button ❷.

2



Scroll to "Power Savings" using the Navigation Up ❶ and/or Down ❷ buttons, followed by the Enter/Play/Pause ►|| button ❸ to select it.

3



Select a desired "Power Savings" setting (Off; 1, 2, 5 or 10 minutes) using the Navigation Up ❶ and/or Down ❷ buttons, followed by the Enter/Play/Pause ►|| button ❸ to confirm.

NOTE: This setting will turn off the display after the selected amount of time.

4

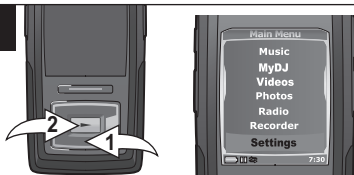


Press the Menu button to go back to the Main menu.

SETTINGS MENU (CONTINUED)

SETTING THE BACKLIGHT TIMER

1



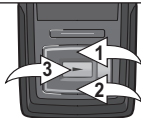
2



Turn the unit on and access the main menu as described on page 34. Select Settings using the Navigation Down button ❶, followed by the Enter/Play/Pause ►|| button ❷ to select it.

Scroll to “Backlight Timer” using the Navigation Up ❶ and/or Down ❷ buttons, followed by the Enter/Play/Pause ►|| button ❸ to select it.

3



Select a desired “Backlight Timer” setting (Off; 5, 10 or 30 seconds; or Always On) using the Navigation Up ❶ and/or Down ❷ buttons, followed by the Enter/Play/Pause ►|| button ❸ to confirm.

NOTE: This setting will dim the display after the selected amount of time.

4

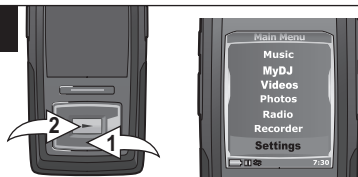


Press the Menu button to go back to the Main menu.

SETTINGS MENU (CONTINUED)

SETTING THE TIME

1



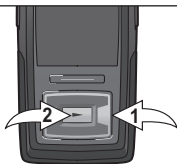
Turn the unit on and access the main menu as described on page 34. Select Settings using the Navigation Down button ❶, followed by the Enter/Play/Pause ►|| button ❷.

2



Scroll to "Time Set" using the Navigation Up ❶ and/or Down ❷ buttons, followed by the Enter/Play/Pause ►|| button ❸ to select it.

3



Set the current hour using the Navigation Up and/or Down ❶ buttons. Then, press the Navigation Right/Skip-Search ►|| button ❶ to navigate to the minute. Set the current minute using the Navigation Up and/or Down ❶ buttons. Then, press the Enter/Play/Pause ►|| button ❷ to confirm the time.

4

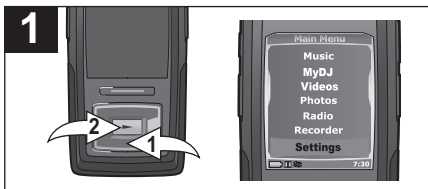


Press the Menu button to go back to the Main menu.

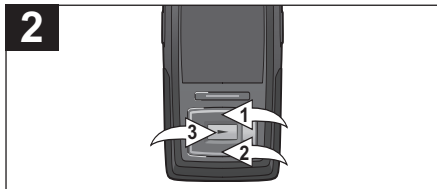
NOTE: The time on this unit is in 12 hour format with no AM/PM denotation.

SETTINGS MENU (CONTINUED)

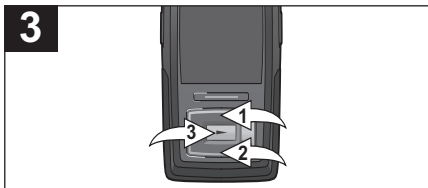
SETTING THE LANGUAGE



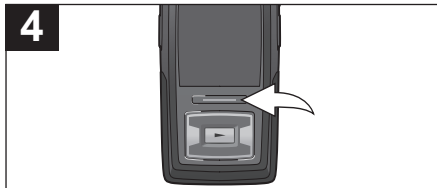
Turn the unit on and access the main menu as described on page 34. Select Settings using the Navigation Down button ❶, followed by the Enter/Play/Pause ►|| button ❷.



Scroll to "Language" using the Navigation Up ❶ and/or Down ❷ buttons, followed by the Enter/Play/Pause ►|| button ❸ to select it.



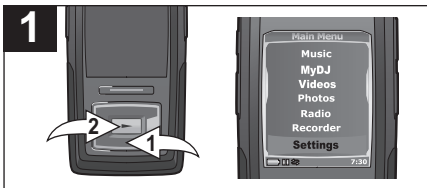
Select a desired "Language" setting (English or Spanish) using the Navigation Up ❶ and/or Down ❷ buttons, followed by the Enter/Play/Pause ►|| button ❸ to confirm.



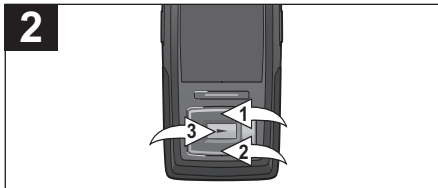
Press the Menu button to go back to the Main menu.

SETTINGS MENU (CONTINUED)

TO VIEW THE SYSTEM INFO (“ABOUT”)



Turn the unit on and access the main menu as described on page 34. Select Settings using the Navigation Down button ❶, followed by the Enter/Play/Pause ►|| button ❷.



Scroll to “About” using the Navigation Up ❶ and/or Down ❷ buttons, followed by the Enter/Play/Pause ►|| button ❸ to select it.

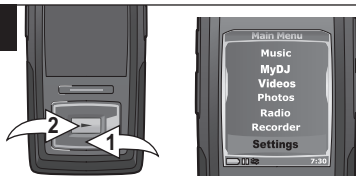


The “About” screen will display the device information such as the Firmware version, Int. (Internal) Total Memory, Int. (Internal) Used Memory, Int. (Internal) Free Memory, Ext. (External) Total Memory, Ext. (External) Used Memory and Ext. (External) Free Memory. Press the Menu button to go back to the previous screen; press the Menu button again to return to the Main menu.

SETTINGS MENU (CONTINUED)

TO RESTORE THE DEFAULT SETTINGS

1



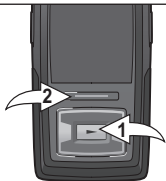
2



Turn the unit on and access the main menu as described on page 34. Select Settings using the Navigation Down button ❶, followed by the Enter/Play/Pause ►|| button ❷.

Scroll to “Default” using the Navigation Up ❶ and/or Down ❷ buttons, followed by the Enter/Play/Pause ►|| button ❸ to select it.

3



4



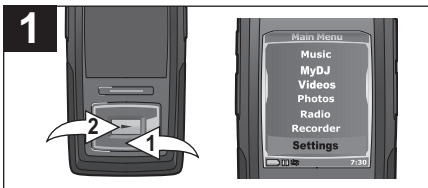
Press the Enter/Play/Pause ►|| button ❶ to reset all of the unit’s settings to the factory default settings. **OR** Press the Menu button ❷ to cancel and NOT reset to the factory default settings.

Press the Menu button to go back to the Main menu.

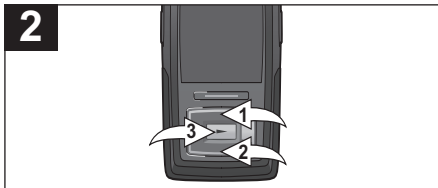
SETTINGS MENU (CONTINUED)

TO FORMAT THE PLAYER

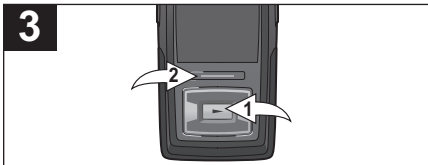
WARNING! Do not format this player unless it stops working and you are instructed to do so by technical support personnel.



Turn the unit on and access the main menu as described on page 34. Select Settings using the Navigation Down button ❶, followed by the Enter/Play/Pause ►|| button ❷.



Scroll to "Format" using the Navigation Up ❶ and/or Down ❷ buttons, followed by the Enter/Play/Pause ►|| button ❸ to select it.



Press the Enter/Play/Pause ►|| button ❶ to format the device and erase all content. **OR** Press the Menu button ❷ to cancel and NOT format the device.

NOTES:

- If you format the unit, the unit will restart automatically.
- To format the unit using your computer, please see page 71.

TROUBLESHOOTING GUIDE

If you experience a problem with this unit, check the chart below before calling for service.

SYMPTOM	CAUSE	SOLUTION
Unit will not turn on.	Battery is low/empty.	Recharge battery as described on page 7.
	Power is not turned on.	See page 34 for how to turn on the power.
No sound.	Headphones are not inserted.	Insert headphones.
	Volume is set too low.	Raise the volume using the Volume Up button.
	The media files are corrupted.	Download uncorrupted files.
	No files are in the player.	Upload files to the unit as described on pages 20-24.
The computer is not recognizing the player.	The player is not securely connected.	Make sure player is securely connected.
	Computer is not compatible.	Supported OS: Windows ME, 2000, XP and Mac OS X
WMA files with DRM can't playback.	Incorrect downloading methods.	See page 23 to download WMA files with DRM.

TROUBLESHOOTING GUIDE (CONTINUED)

SYMPTOM	CAUSE	SOLUTION
No buttons work.	The Lock feature is activated.	Deactivate Lock feature as described on page 36.
	Unit needs to be reset or firmware needs to be updated.	Reset unit and/or update firmware, see page 72.
Unit acting erratically.	Unit needs to be reset or firmware needs to be updated.	Reset unit and/or update firmware, see page 72.

FORMATTING THE PLAYER

Formatting the Player

WARNING! Do not format this player unless it stops working and you are instructed to do so by technical support personnel.

1. Use the USB cable to connect the player and the computer.
2. Double click on My Computer, then right click "MTP Player", "Aptitude", "MMP8620" or "Removable Disk" and left click on "Format".

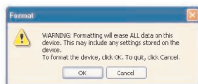
- 3a. For "MTP Player", "Aptitude" or "MMP8620", at the "Format" window, click OK to confirm and the player will start to format (see figure to the right). When finished, click "OK" to close the Format window.

- 3b. For "Removable Disk", at the "Format" window, select "FAT 32" from the file system pull-down menu, then click "Start" to format the unit (see figure above).

NOTE: Make sure you have selected "FAT 32" at the file system pull-down menu; otherwise, after formatting, the player will not work properly. Then, click OK to confirm and the player will start to format. When finished, click "Close" to close the Format window.



Format window for "Removable Disk"



Format window for "MTP Player", "Aptitude" or "MMP8620"

RESETTING THE UNIT

If the unit acts erratically, reset the unit by inserting a thin object (such as a paper clip) into the recessed Reset button. For the Reset button, see page 6 for the button's location.

FOR FIRMWARE UPGRADE

Please visit our Web site at www.memorexelectronics.com to check if there is new firmware available.

IMPORTANT NOTE: Before upgrading the firmware, please backup all of your media files on your computer. After upgrading, format the unit to complete the upgrade procedure.

SPECIFICATIONS

Audio	Frequency Range	20Hz–20KHz
	Headphones Output	11mW, 32ohm (Max Vol)
	S/N Ratio	90dB (MP3)
File Support	MP3	MPEG 1/2/2.5 Layer 3 with a Bit Rate of 32-320 kbps
	WMA	Windows Media Audio (WMA file with DRM 9 or DRM 10) with a Bit Rate of 48-192 kbps
	WMV	WMV 9 (simple profile, 220 x 176 resolution, 30 fps, 384 kbps max) + WMA 9 (sample rate of 8-48 kHz).
	MPEG-4	AVI (220 x 176 resolution, 30fps, 768 kbps max) + MP3
	Picture	baseline JPEGs
FM Tuner	FM Frequency Range	87.5MHz–108MHz
	Antenna	Headphones Cord Antenna
General	Dimension	1.7 (W) x 3.4 (H) x 0.5 (D) inches
	Weight	1.5 ounces
	USB	USB 2.0
	Built-in Memory	2GB
	Built-in Battery	Li-Polymer Rechargeable battery 390mAh
	Max. Playtime	approx. 20 hrs in Music Playback mode
	Supported OS	Windows ME, 2000, XP and Mac OS X
Operating Temperature	23° F to 104° F (-5° C to 40° C)	

Specifications are subject to change without notice.

**FOR FIRMWARE UPGRADE, PLEASE VISIT OUR WEBSITE AT
WWW.MEMOREXELECTRONICS.COM
TO CHECK IF THERE IS NEW FIRMWARE AVAILABLE.**

**FOR ADDITIONAL SET-UP OR OPERATING ASSISTANCE,
PLEASE VISIT OUR WEBSITE AT
WWW.MEMOREXELECTRONICS.COM
OR CONTACT CUSTOMER SERVICE AT (954) 660-7100.**

**PLEASE KEEP ALL PACKAGING MATERIAL FOR AT LEAST 90
DAYS IN CASE YOU NEED TO RETURN THIS PRODUCT TO YOUR
PLACE OF PURCHASE OR TO MEMOREX.**

**FOR CONSUMER REPLACEABLE PART(S), SEE PART
NUMBER(S) ON PAGES 6 AND 8 AND THEN CONTACT FOX
INTERNATIONAL AT 1-800-321-6993.**

Free Manuals Download Website

<http://myh66.com>

<http://usermanuals.us>

<http://www.somanuals.com>

<http://www.4manuals.cc>

<http://www.manual-lib.com>

<http://www.404manual.com>

<http://www.luxmanual.com>

<http://aubethermostatmanual.com>

Golf course search by state

<http://golfingnear.com>

Email search by domain

<http://emailbydomain.com>

Auto manuals search

<http://auto.somanuals.com>

TV manuals search

<http://tv.somanuals.com>