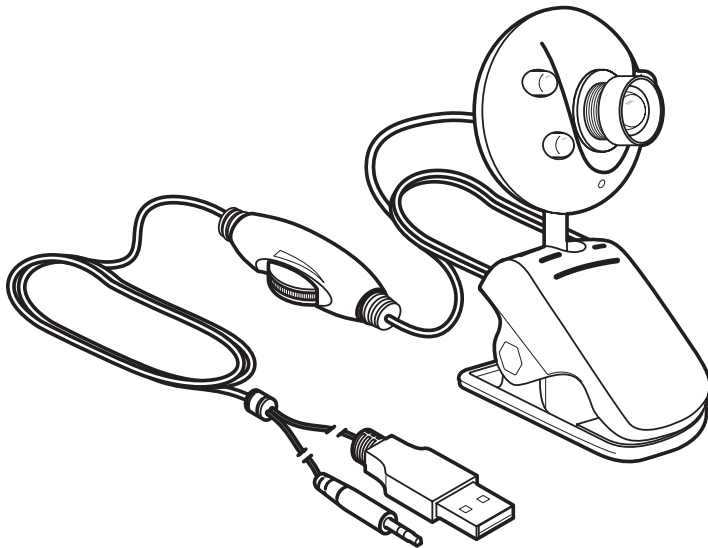


**ChatCam™ Webcam**  
**Model 4310100**



**System Requirements:**

- IBM® or Compatible PC with Windows® XP/SP2/Vista/Win7
- USB port
- Tray loading CD-ROM Drive

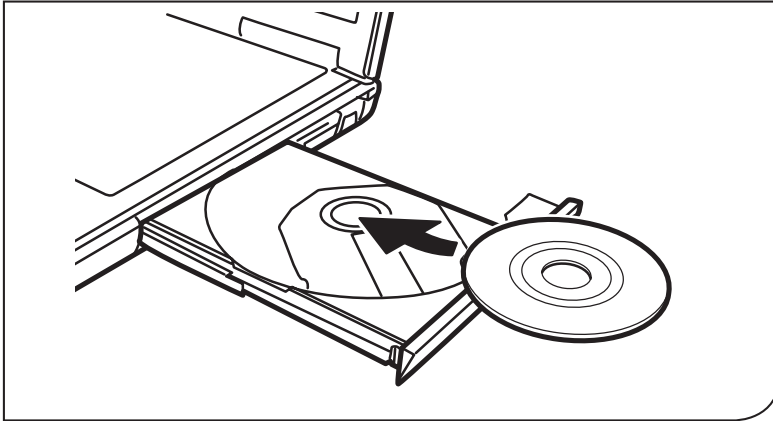
**Packaging Contents:**

- Webcam
- ooVoo™ and Install CD
- Quick Start Guide

**Contents**

Installing the Software .....	2
Installing your New Webcam .....	5
Capturing a Photograph .....	6
Capturing a Video .....	6
Setting the Webcam Options .....	8
Webcam Features .....	11
Maintaining Your Webcam .....	11

## Installing the Software



- 1** Insert the CD into the CD drive.

**Note:** If the install screen does not launch automatically, open the folders on the CD and double-click the setup.exe file.



- 2** The Micro Innovations® software install window will appear. Select **Webcam Driver** to begin the installation.



- 3** The InstallShield® Wizard will guide you through the rest of the Webcam Driver installation. Click **Next** to continue.



**4**

The software will automatically choose a default destination folder, or you may choose the destination folder yourself. Click **Next** to continue.



**5**

Click **Install** to begin the installation of the Webcam Software.



**6**

When the Webcam Software has completed installation, click **Finish** to exit the wizard. Proceed to Step 7 to install the ooVoo™ Software.



**7** The Micro Innovations® software install window will still be active on the desktop. Select **ooVoo™ Software** to begin the installation.



**8** The ooVoo™ InstallShield® Wizard screen will appear. Click **Next** to begin the installation of the ooVoo™ Software.



**9** The software will automatically choose a default destination folder, or you may choose the destination folder yourself. Click **Install** to continue.

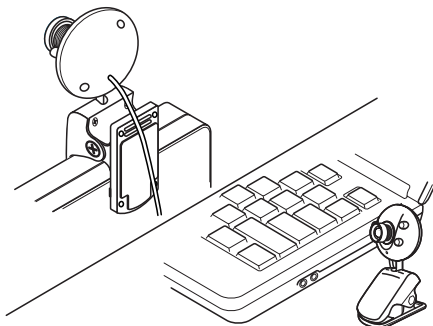


**10** Follow the instructions on the screen to create your ooVoo™ account. Use the ooVoo™ login screen to sign-in to begin chatting with your camera.

Restart your computer after completing the software installation procedures.

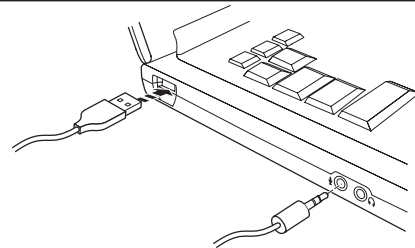
## Installing your New Webcam


**1**



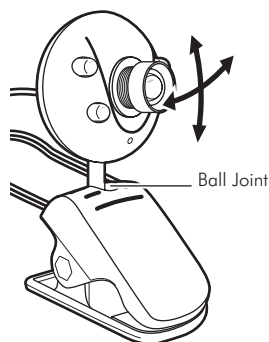
Mount webcam above the computer monitor or use on your desk as a standalone camera.

**2**



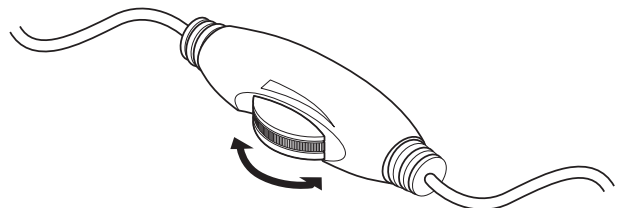
Plug in microphone cable to microphone jack, and USB cord into an available USB port on the computer. USB ports are identified as .

**3**



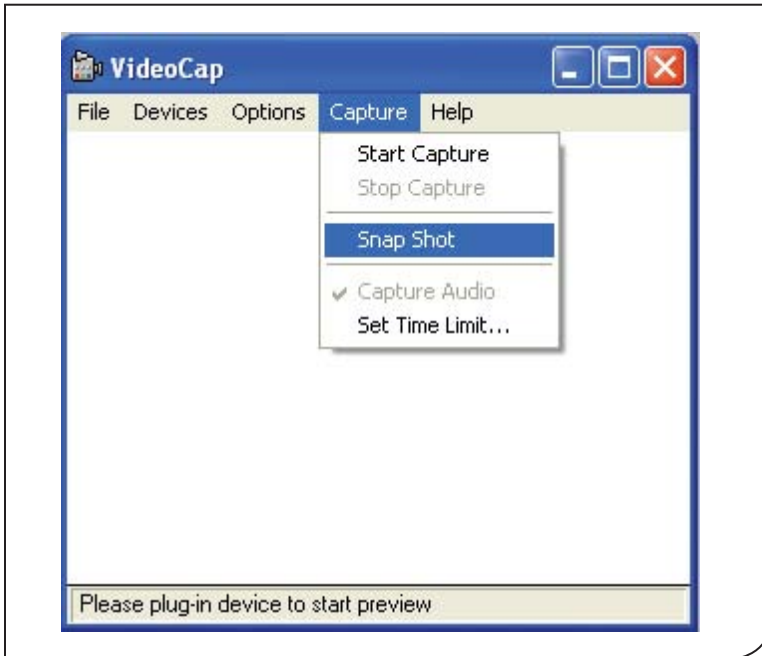
Rotate the ball joint to adjust the angle of view.

**4**



Use the switch on the cord to adjust the LED brightness on the webcam's face.

## Capturing a Photograph



1

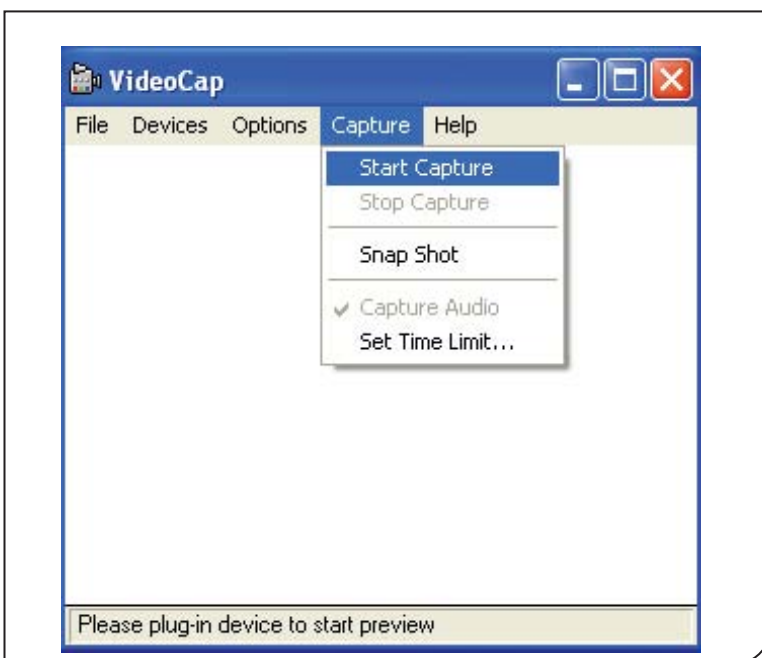
Launch VideoCap from your desktop.



Click on **Capture**. Click on **Snap Shot**.

After the image has been captured, it will open in your default photo viewing application.

## Capturing a Video



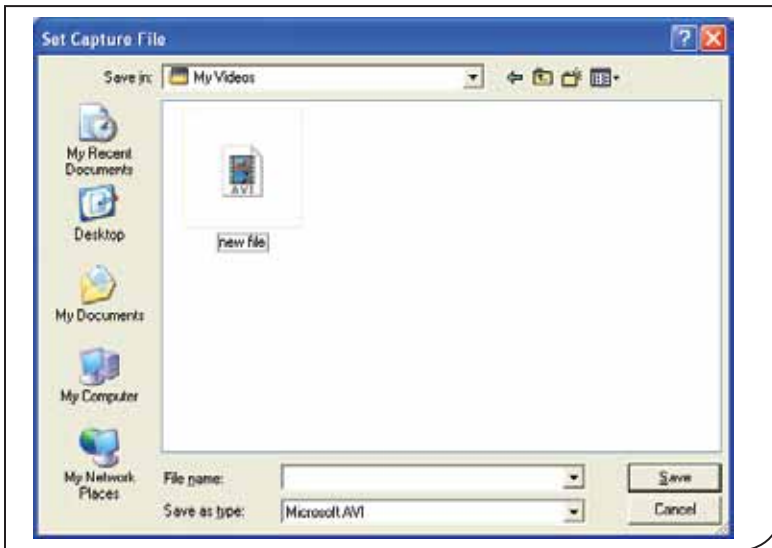
1

Launch VideoCap from your desktop.



Click on **Capture**. Click on **Start Capture**.





**2**

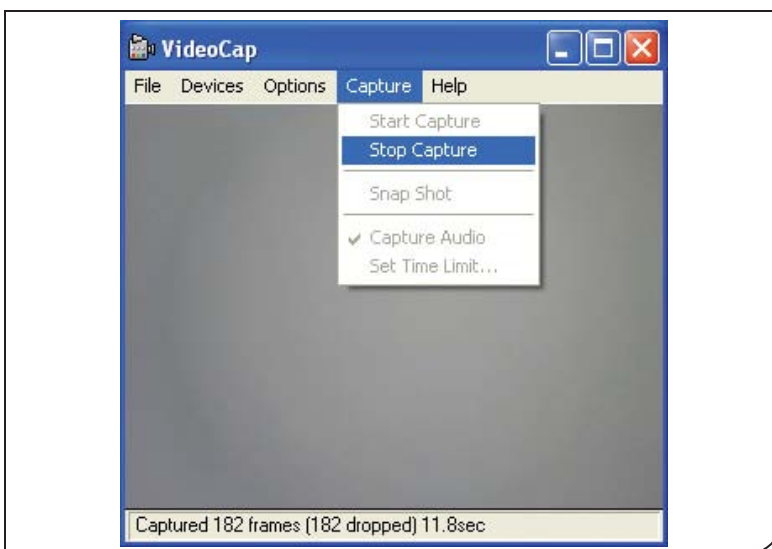
The very first time you are recording video, the Set Capture File window will appear. Navigate to your desired destination, choose a file name, and click **Save**.

Note: This step will be skipped if this is not your first time capturing video.



**3**

Click **OK** to start capturing video.



**4**

To stop capturing video, click on **Capture**. Click on **Stop Capture**.

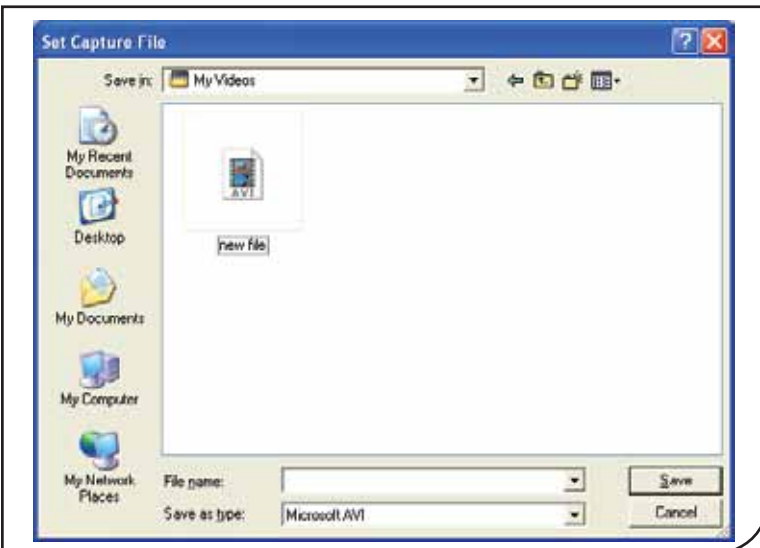
## Setting Webcam Options

The software has many options available to personalize your settings.



**1**

To select or change the folder where your videos will be automatically saved, click on **File** and then select **Set Capture File**.



**2**

Navigate to the desired folder and click **OK**. The default folder is My Documents.



**3**

The **Devices** menu allows you to switch between your currently installed video, photo, or audio capturing devices (if applicable).

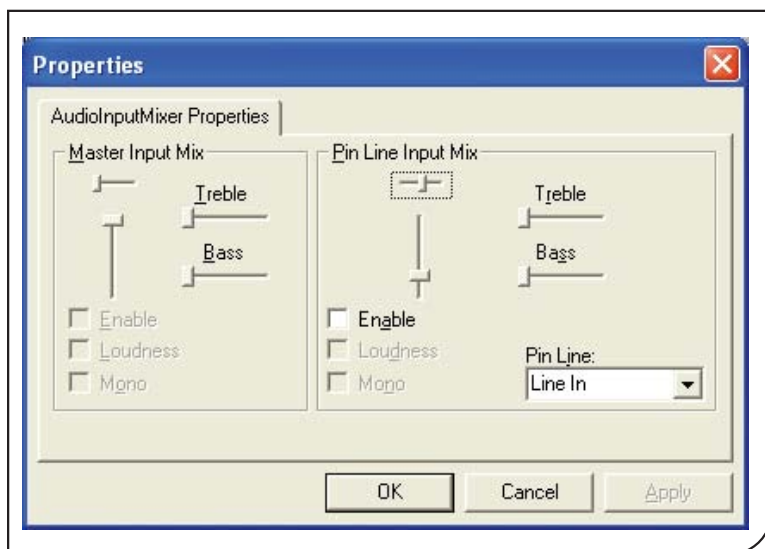
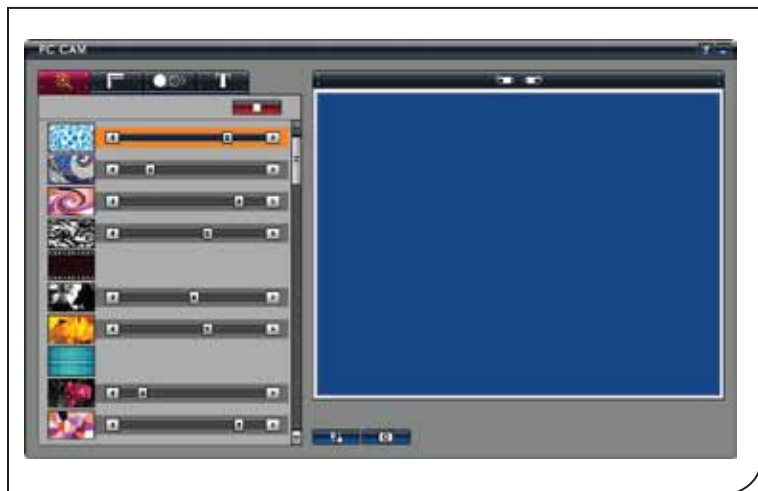
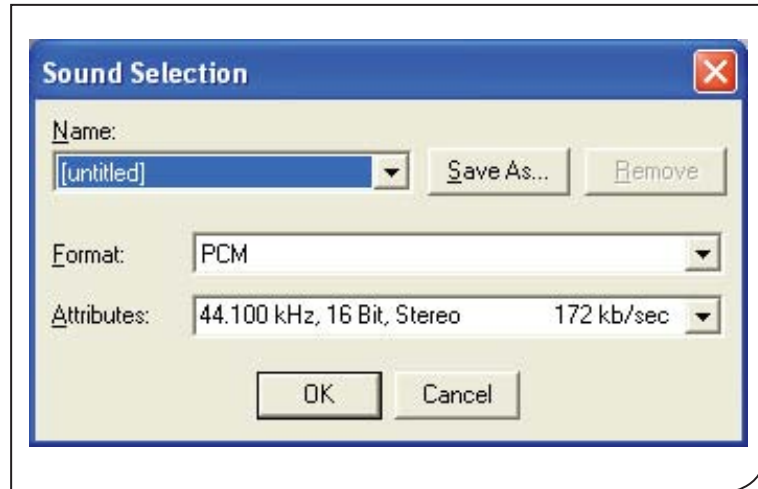


**4**

The **Preview** option allows you to view on your screen what the camera is currently seeing. It is selected as a default.



## Setting Webcam Options



**5** The **Audio Format...** option includes sound selection options for capturing audio.

Some options may not be available or may be automatically selected.

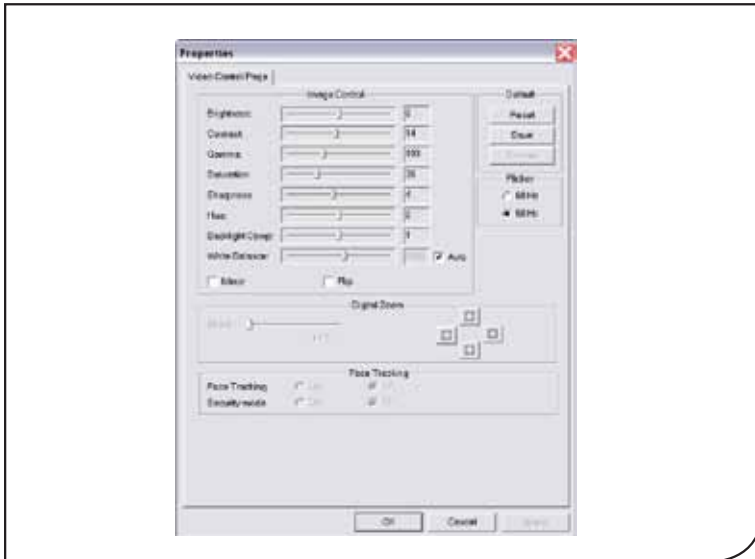
**6** The **Effect** option brings up a screen to select various display effects including effects, frames, animations, and text.

The **Effect** options can also be accessed by clicking the icon on your desktop.



**7** The **Audio Capture Filter...** includes additional options for capturing audio.

Some options may not be available or may be automatically selected.

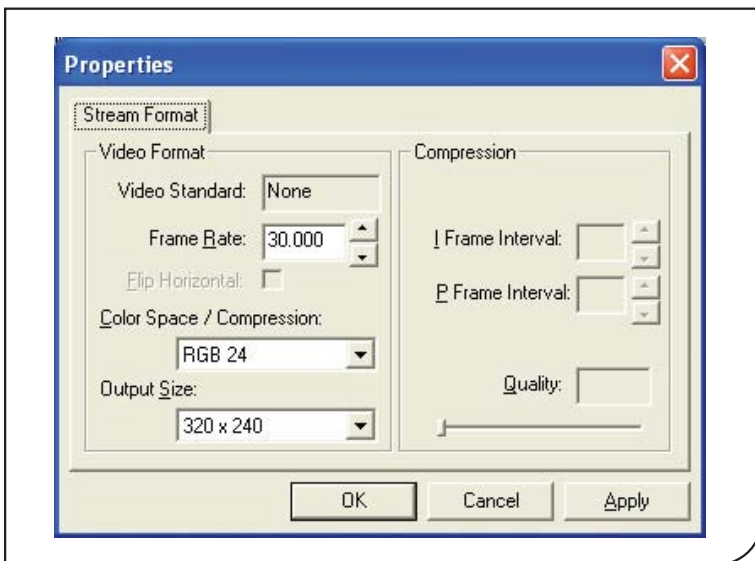


**8**

## The **Video Capture Filter...**

includes options to set brightness, contrast, hue, etc. by sliding the bars or typing in a number.

Some options may not be available or may be automatically selected.

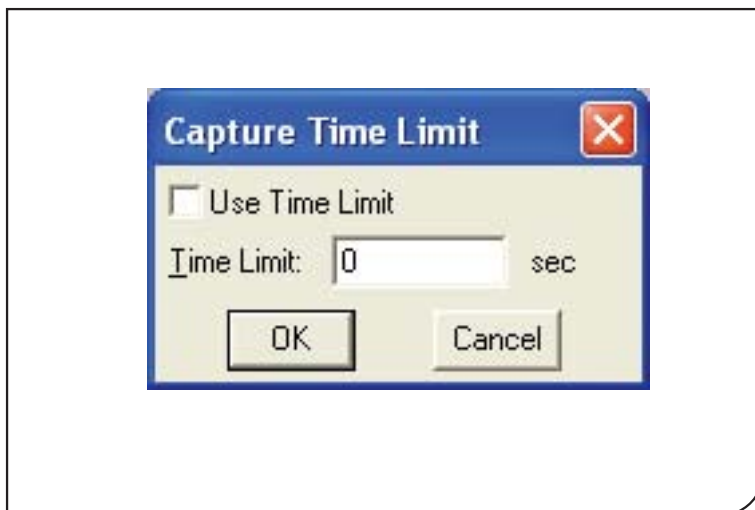


**9**

## The **Video Capture Pin...**

includes stream formatting options.

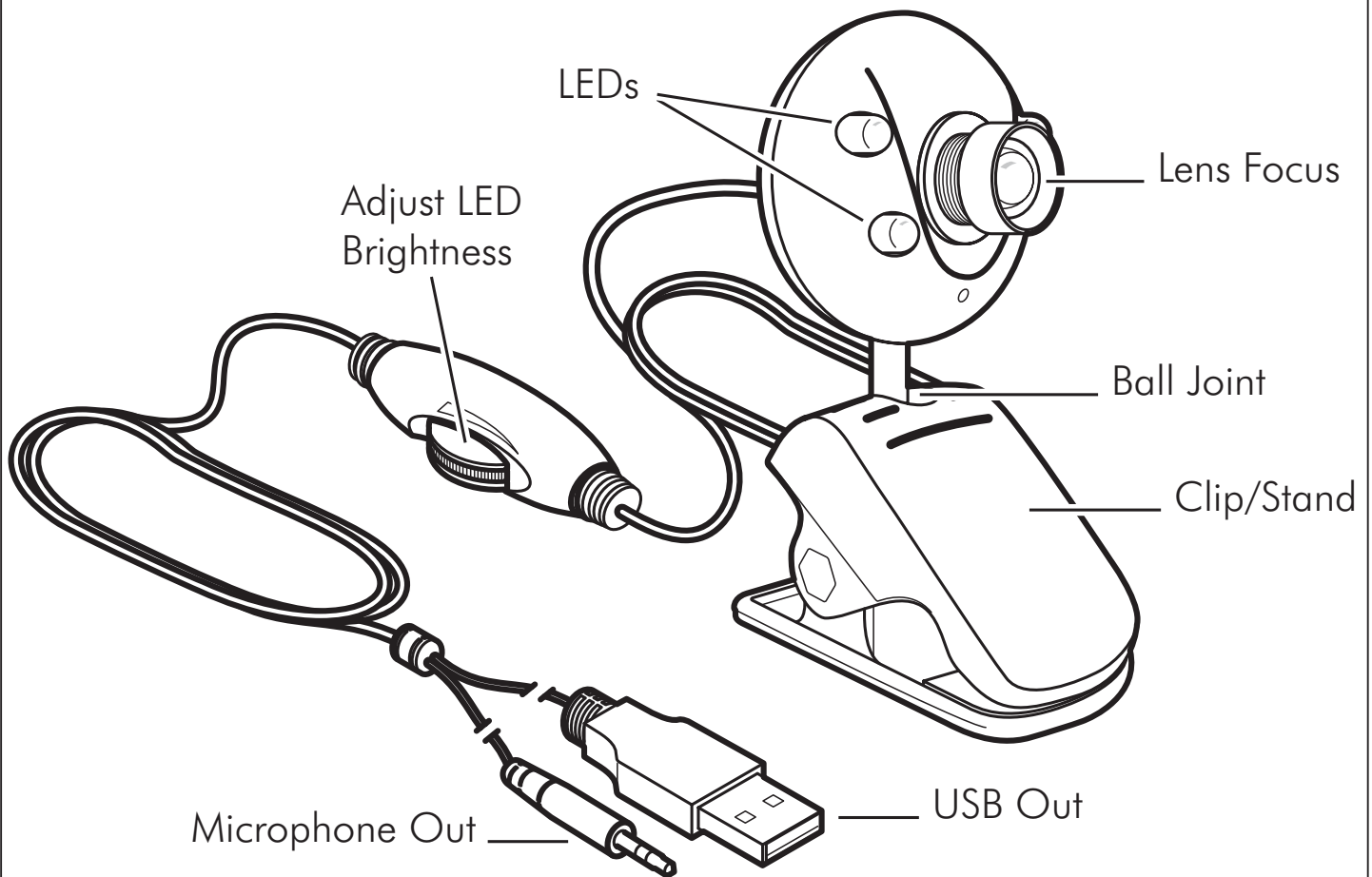
Some options may not be available or may be automatically selected.



**10**

In addition to capturing videos and pictures, the **Capture** menu allows you to set a time limit on your videos. Click **Set Time Limit**.

## Webcam Features



## Maintaining Your Webcam

Regular maintenance ensures a longer product life and minimizes the chance of causing damage to your webcam.

- Always disconnect the webcam before cleaning it.
- Clean the lens with a lint-free cloth.
- Do not try to repair any part of this product. For technical support please visit [www.digitalinnovations.com/support.html](http://www.digitalinnovations.com/support.html)

## Free Manuals Download Website

<http://myh66.com>

<http://usermanuals.us>

<http://www.somanuals.com>

<http://www.4manuals.cc>

<http://www.manual-lib.com>

<http://www.404manual.com>

<http://www.luxmanual.com>

<http://aubethermostatmanual.com>

Golf course search by state

<http://golfingnear.com>

Email search by domain

<http://emailbydomain.com>

Auto manuals search

<http://auto.somanuals.com>

TV manuals search

<http://tv.somanuals.com>