

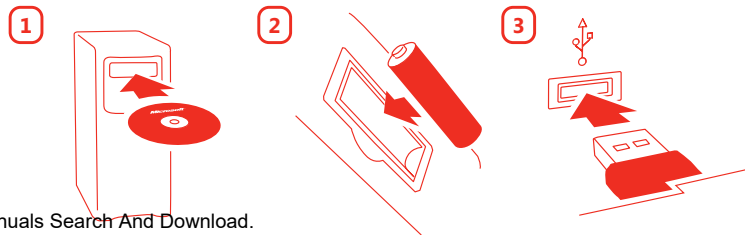
Getting Started

Microsoft® Wireless Mouse Products

0505 Part No. X11-27312

www.microsoft.com/hardware

Download from Www.Somanuals.com. All Manuals Search And Download.





HEALTH WARNING

Use of a keyboard or mouse may be linked to serious injuries or disorders.

When using a computer, as with many activities, you may experience occasional discomfort in your hands, arms, shoulders, neck, or other parts of your body. However, if you experience symptoms such as persistent or recurring discomfort, pain, throbbing, aching, tingling, numbness, burning sensation, or stiffness, **DO NOT IGNORE THESE WARNING SIGNS. PROMPTLY SEE A QUALIFIED HEALTH PROFESSIONAL**, even if symptoms occur when you are not working at your computer. Symptoms like these can be associated with painful and sometimes permanently disabling injuries or disorders of the nerves, muscles, tendons, or other parts of the body. These musculoskeletal disorders (MSDs) include carpal tunnel syndrome, tendonitis, tenosynovitis, and other conditions.

While researchers are not yet able to answer many questions about MSDs, there is general agreement that many factors may be linked to their occurrence, including: overall health, stress and how one copes with it, medical and physical conditions, and how a person positions and uses his or her body during work and other activities (including use of a keyboard or mouse). The amount of time a person performs an activity may also be a factor.

Some guidelines that may help you work more comfortably with your computer and possibly reduce your risk of experiencing an MSD can be found in the "Healthy Computing Guide" installed with this device's software. If this device did not come with software, see the "Healthy Computing Guide" section of the "Getting Started" manual. You can also access the "Healthy Computing Guide" at www.microsoft.com/hardware or (in the United States only) by calling 1 (800) 360-7561 to request a CD at no charge.

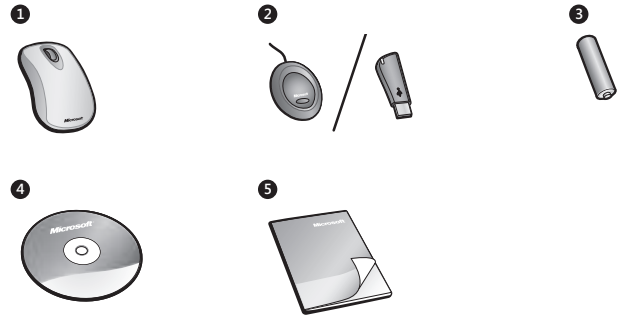
If you have questions about how your own lifestyle, activities, or medical or physical condition may be related to MSDs, see a qualified health professional.

About Your Rights and Obligations

The software included with this product is licensed, not sold. You must either agree to the license contract in the software Setup screen or promptly return the entire product for a refund, excluding the return costs. After you install the software, you may consult the license and the Limited Warranty for the product at any time by looking in the "Legal Information" section of the software Help files. You may also print a copy for your records.

Welcome

Congratulations on your purchase of a Microsoft® wireless mouse, which includes:



- 1 Wireless mouse
- 2 Receiver (desktop or notebook version, depending on your mouse model)
- 3 One or more batteries for your wireless mouse, depending on your mouse model
- 4 CD with Microsoft IntelliPoint mouse software
- 5 This *Getting Started* manual



Important

- Check the system requirements (located on the packaging) to make sure that your system is compatible with the product that you purchased.
- If you don't already have a mouse, you can install the IntelliPoint software after you have completed Steps 2 through 5 and your Microsoft wireless mouse is working.

1 | Install IntelliPoint Mouse Software

IntelliPoint software enables the unique features of your mouse.

To install IntelliPoint software (Microsoft Windows® operating system)

- 1 Insert the software CD into your computer's CD drive. If the Setup screen doesn't appear automatically, do the following:
 - Click **Start**, and then click **Run**.
 - Type **[drive]:setup**. For example, if your CD drive is drive E, type **e:setup**
- 2 On the Setup screen, click **Install**, and then follow the Setup Wizard instructions on the screen. Restart the computer, if prompted to do so.



To install IntelliPoint software (Macintosh)

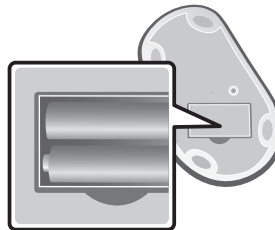
- 1 Insert the software CD into your computer's CD drive.
- 2 Double-click the Microsoft-Desktop.dmg file.
- 3 Double-click the Microsoft Desktop.mpkg icon, and then follow the on-screen instructions. Restart the computer, if prompted to do so.

2 | Insert the Batteries

Whenever you insert batteries, always make sure that each of them is new. Alkaline batteries provide maximum battery life and are included in the package.

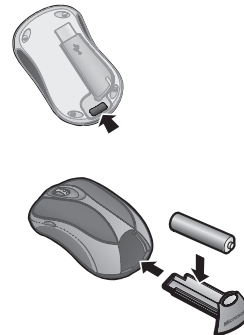
Desktop Mouse

- 1 Remove the battery compartment cover.
- 2 Insert the batteries, making sure to properly orient the positive (+) and negative (-) ends as specified by the battery compartment labels.



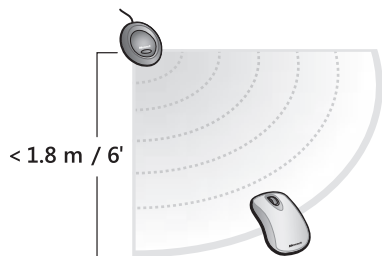
Notebook Mouse

- 1 Press the **Open** button on the bottom of the mouse, and then pull the battery compartment out.
- 2 Insert the battery, making sure to properly orient the positive (+) and negative (-) ends as specified by the battery compartment labels.

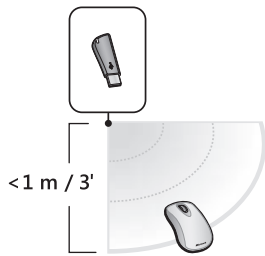


3 | Position the Wireless Mouse and Receiver

For optimum performance, position the receiver away from any items that might cause interference, such as computer monitors, large metal objects (including metal furniture), desktop fans, or fluorescent lights. Make sure that the distance between the mouse and receiver is within the wireless range specified on the packaging.



Desktop mouse positioning



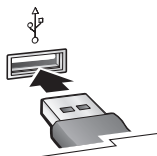
Notebook mouse positioning

4 | Connect the Receiver to the Computer

- Turn on your computer, and then plug the rectangular **USB connector** into your computer's rectangular USB port.



Note If you don't have an available USB port, see "Other Connection Options" later in this manual.



USB Connector

5 | Test the Mouse

Try using the mouse. If it doesn't work as expected, make sure that you completed the following procedures as specified earlier in these instructions:

- The battery or batteries are new and inserted correctly.
- The receiver is properly connected to the computer.
- The receiver and mouse are properly positioned within their wireless range and there are no nearby items that might cause interference.

If the mouse is still not working, try changing the wireless connection channel. Changing the channel is useful if your mouse is experiencing interference.

To change the wireless connection channel

- Press the **Connect** button on the bottom of the wireless mouse.

If changing the channel doesn't solve the problem, you may need to reconnect the mouse to the receiver.

To reconnect the mouse to the receiver

- 1 Make sure that the mouse and receiver are positioned as specified earlier in this manual.
- 2 Press the button on the receiver, and then immediately press the **Connect** button on the bottom of the mouse. Using the tip of a pen may make it easier to press smaller buttons.

6 | Read the On-Screen Help (optional)

Help for Microsoft IntelliPoint mouse software contains the following important product information in a searchable format:

- Hardware and software feature descriptions and instructions
- Troubleshooting topics and Product Support Services information
- Healthy Computing Guide
- Battery removal and safety information
- End-User License Agreement (EULA), Limited Warranty, and regulatory information

To open Help for your mouse

- **Windows:** Click **Start**, point to **All Programs**, point to **Microsoft Mouse**, and then click **Mouse Help**.
- **Macintosh:**
 - 1 Choose **Apple** > **System Preferences** > **Microsoft Mouse**.
 - 2 Choose **Help** > **Microsoft Mouse Help**.

7 | Customize Your Mouse (optional)

By using IntelliPoint software, you can reassign any button, including the wheel button, to a different command. You can also change your mouse settings, such as the wheel scrolling rate.

To start IntelliPoint software

- **Windows:** Click **Start**, point to **All Programs**, point to **Microsoft Mouse**, and then click **Microsoft Mouse**.
- **Macintosh:** Choose **Apple** > **System Preferences** > **Microsoft Mouse**.



Important

- Before boarding any aircraft, remove the batteries from the wireless mouse or snap the receiver into its slot on the bottom of the notebook mouse (turning it off). The wireless mouse can transmit radio frequency (RF) energy, much like a cellular telephone, whenever batteries are installed and the mouse is activated either by touch or button press. The notebook mouse can transmit RF energy whenever batteries are installed and the receiver is detached from its slot on the bottom of the mouse (turning it on).
- For detailed information about U.S. and Canadian radio interference regulations, search for “regulations” in the on-screen Help installed with the software. For information about how to access Help, see Step 6.

Using the Magnifier (some mouse models only)

You can use the Magnifier like a magnifying glass to enlarge text and images on your screen.

To turn the Magnifier on and off

- Click the mouse button assigned to **Magnify** to display the Magnifier, and then click the button again to turn it off.

Storing the Receiver in the Mouse (notebook mouse models only)

For added portability or when the mouse isn't in use, you can snap the receiver into its slot on the bottom of the mouse. Attaching the receiver to the mouse in this way automatically turns the mouse off.



Other Connection Options

USB provides simpler plug-and-play connectivity and enhanced performance. If you don't have any available USB ports, try the following options:

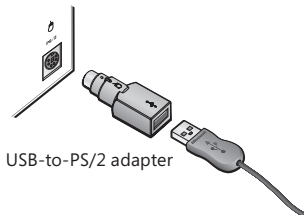
USB hub

If all of your USB ports are in use, consider purchasing a 4-port or 8-port USB hub. USB hubs, which are available at office and computer supply stores, provide an inexpensive solution for connecting multiple USB devices when your computer has a limited number of USB ports.

PS/2 connection (Windows only)

Although we recommend connecting using USB, you can use a PS/2 connection option if your product supports PS/2 connectivity.

- 1 Shut down and turn off the computer.
- 2 Plug the USB connector into the **USB-to-PS/2 adapter**, and then plug the adapter into your computer's round PS/2 mouse port.



Product Information and Software Updates

For general product information and software updates, go to the Microsoft Hardware Web site at <http://www.microsoft.com/hardware>

Troubleshooting

If you have a question about your wireless mouse, try the following options:

- Check the system requirements (located on the packaging) to make sure that your system is compatible with the product that you purchased.
- View the on-screen Help, which contains product information and troubleshooting tips.
- Look in the Readme file for late-breaking product information.
- Go to the Microsoft Hardware Web site at www.microsoft.com/hardware for additional product information and software updates.
- See the Product Support Services topics in Help, or go to <http://support.microsoft.com> for information about how to contact Microsoft Product Support Services.

Patent Information

For patent information, see on-screen Help.

Important Battery Information

Caution Use and replace only with AA (LR6) Alkaline, Zinc-Carbon, or Zinc-Chloride Batteries.

General Precautions

- Keep batteries out of reach of children.
- Insert the batteries in the proper direction as indicated by the positive (+) and negative (-) markings on the battery and battery compartment.
- Do not mix old and new batteries or batteries of different types (for example, carbon and alkaline batteries).
- Always remove old, weak, or worn-out batteries promptly and recycle or dispose of them in accordance with Local and National Disposal Regulations.
- If a battery leaks, remove all batteries and recycle or dispose of them in accordance with the battery manufacturer's instructions and Local and National Disposal Regulations. Before inserting new batteries, thoroughly clean the battery compartment with a damp paper towel, or follow the battery manufacturer's recommendations for cleanup. If fluid from the battery comes into contact with skin or clothes, flush skin with water immediately.
- Remove the batteries if your device is to be stored for an extended period of time without being used.

Special Precautions

The precautions below are to prevent the sudden release of electrolytes, which these prohibited actions can cause:

- Do not install the batteries incorrectly. Carefully observe the positive (+) and negative (-) markings on the battery for proper installation.
- Do not open, puncture, or mutilate the batteries.
- Do not heat batteries.
- Do not use a fire to dispose of batteries.

Released battery electrolyte is corrosive, can cause damage to the eyes and skin, and may be toxic if swallowed.

Regulatory Information

Tested to comply with FCC (U.S. Federal Communications Commission) Standards. For home or office use. Not intended for use in machinery, medical or industrial applications. Any changes or modifications not expressly approved by Microsoft could void the user's authority to operate this device.

This product is for use with NRTL Listed (UL, CSA, ETL, etc.), and/or IEC/EN 60950 compliant (CE marked) Information Technology equipment. No serviceable parts included.

This device is rated as a commercial product for operation at +41°F (+5°C) to +95°F (+35°C).



Note: For detailed information on U.S. and Canadian radio interference regulations, search for "regulations" in the on-screen Help files installed with the accompanying software.

This Class B digital apparatus complies with Part 15 of the U.S. Federal Communications Commission (FCC) rules, Canadian ICES-003 and RSS-210. Operation is subject to the following two conditions: (1) this device may not cause interference, and (2) this device must accept any interference received, including interference that may cause undesired operation.

Cet appareil numérique de la classe B est conforme aux normes NMB-003 et CNR-210 du Canada. Son fonctionnement est assujéti aux deux conditions suivantes : (1) Cet appareil ne peut pas provoquer d'interférences nuisibles et (2) cet appareil doit accepter toute interférence reçue, y compris les interférences pouvant entraîner un fonctionnement non désiré.

Microsoft Corporation; One Microsoft Way; Redmond, WA 98052-6399; U.S.A.

United States: (800) 426-9400 Canada: (800) 933-4750

RF Technical Specifications

RF output power: < 54 dBµV/m at 3 m

Keyboard with two channels – RF frequencies: 27.095MHz (channel 1), 27.195MHz (channel 2)

Keyboard with a single channel – RF frequency: 27.195MHz

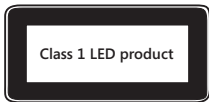
Mouse with two channels – RF frequencies: 27.045MHz (channel 1), 27.145MHz (channel 2)

Mouse with a single channel – RF frequency: 27.145MHz

Information About Devices That Use LEDs

This product has been evaluated to comply with International Standard IEC 60825-1:1993/A2:2001

This product uses LEDs that are inherently Class 1.



Product Disposal Information

Dispose of this product in accordance with local and national disposal regulations (if any), including those governing the recovery and recycling of waste electrical and electronic equipment (WEEE).



Warning

To protect against risk of fire, bodily injury, electric shock or damage to the equipment:

- Do not immerse any part of this product in water or other liquid.
- Do not spray liquid on this product or allow excess liquid to drip inside.
- Do not use this product if it has sustained any type of damage.
- Disconnect this product or remove its batteries before cleaning.

Information in this document, including URL and other Internet Web site references, is subject to change without notice. Unless otherwise noted, the example companies, organizations, products, domain names, e-mail addresses, logos, people, places, and events depicted herein are fictitious, and no association with any real company, organization, product, domain name, e-mail address, logo, person, place, or event is intended or should be inferred. Complying with all applicable copyright laws is the responsibility of the user. Without limiting the rights under copyright, no part of this document may be reproduced, stored in or introduced into a retrieval system, or transmitted in any form or by any means (electronic, mechanical, photocopying, recording, or otherwise), or for any purpose, without the express written permission of Microsoft Corporation. Microsoft may have patents, patent applications, trademarks, copyrights, or other intellectual property rights covering subject matter in this document. Except as expressly provided in any written license agreement from Microsoft, the furnishing of this document does not give you any license to these patents, trademarks, copyrights, or other intellectual property.

Microsoft Corporation grants the purchaser of this product the right to reproduce one (1) copy of this user manual for each Hardware Device you purchased in the package.

© 2005 Microsoft Corporation. All rights reserved.

Microsoft and Windows are either registered trademarks or trademarks of Microsoft Corporation in the United States and/or other countries.

All other trademarks are property of their respective owners

Free Manuals Download Website

<http://myh66.com>

<http://usermanuals.us>

<http://www.somanuals.com>

<http://www.4manuals.cc>

<http://www.manual-lib.com>

<http://www.404manual.com>

<http://www.luxmanual.com>

<http://aubethermostatmanual.com>

Golf course search by state

<http://golfingnear.com>

Email search by domain

<http://emailbydomain.com>

Auto manuals search

<http://auto.somanuals.com>

TV manuals search

<http://tv.somanuals.com>