

Cross Section

HEAD MODEL

Made of durable
Soft Foam!



Explore the human head through hands-on investigation!

Download from www.Somanuals.com. All Manuals Search And Download.

Explore the mysteries of human head with this cross-section foam model. A great hands-on introduction to major organs and structures of the human head (including the ear), this model is ideal for teaching how the organs work together to help our body function. Guide features detailed drawings, clearly labeled parts, definitions to key vocabulary, and interesting facts.



Brain—one of the most important organs; responsible for thinking, moving, speaking, and more

Corpus callosum—large bundle of nerve fibers that connects the left and right hemispheres of the brain together

Cerebellum—coordinates body movement and maintains the body's balance and equilibrium; located near the spinal cord

Pituitary gland—small gland located near the base of the brain that controls the endocrine glands and influences growth of the human body

Skull—skeletal structure of the head that protects the brain and other organs

Nasal bone—side-by-side bones in the middle and upper part of the face that vary in size, depending on the individual

Nasal cavity—inside area of the nose lined with a mucus membrane that keeps the nose moist

Tongue—muscular organ on the bottom of the mouth that aids in chewing, swallowing, and speaking

Spinal cord—part of the nervous system that extends from the base of the brain through the spinal column; a pathway for nerves between the brain and the body

Vertebrae—the 33 bones that make up the spinal column

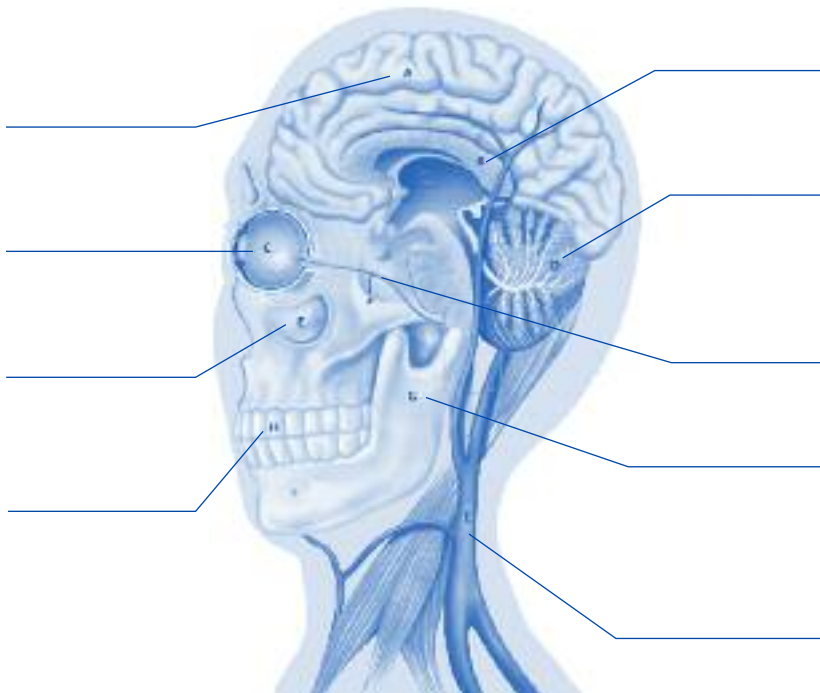
Pharynx—tube that connects the mouth and nasal area with the esophagus; both food and air pass through the pharynx

Esophagus (oesophagus)—tube that connects the mouth to the stomach; food passes through the esophagus to get to the stomach

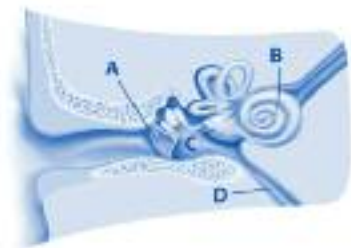
Worksheet

Name: _____

Correctly label the parts.



- A. **Brain**—one of the most important organs; responsible for thinking, moving, speaking, and more
- B. **Corpus callosum**—large bundle of nerve fibers that connects the left and right hemispheres of the brain together
- C. **Eye socket**—the cavity of the skull in which the eye is located
- D. **Cerebellum**—coordinates body movement and maintains the body's balance and equilibrium; located near the spinal cord
- E. **Sinus cavity**—air-filled spaces within the skull and face that filter and moisten ingested air
- F. **Optic nerve**—sends visual information from the retina (part of the eye) to the brain
- G. **Jawbone**—bone of the lower jaw that holds the lower teeth in place
- H. **Teeth**—hard, bonelike structures in the upper and lower jaws used for chewing and biting
- I. **Carotid artery**—main artery that supplies the head and neck with oxygenated blood



- A. **Eardrum**—thin piece of skin separating the outer and middle ear that vibrates and amplifies sound waves before entering the middle ear
- B. **Cochlea**—spiral-shaped tube of the inner ear that contains nerve endings that are needed for hearing
- C. **Middle ear**—central part of the ear that consists of the eardrum and a cavity containing three small bones
- D. **Eustachian tube**—tube that connects the middle ear to the pharynx and equalizes air pressure on either side of the eardrum

Interesting Facts

- The human skull contains 22 bones.
- Your brain is more active and thinks more at night than during the day.
- The brain stops growing at age 15, but learning never stops.
- The spinal cord and nerves—known as the nervous system—let messages flow back and forth between the brain and the body.
- We actually “see” with our brains; the eye is basically a camera.
- The strongest muscle in the body is the tongue.
- The average person has 32 teeth.
- Our eyes are always the same size from birth, but our nose and ears never stop growing.
- Your thumb is the same length as your nose.

Suggested Activities

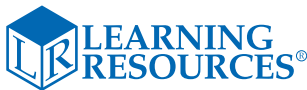
- Use for classroom demonstration as well as individual student exploration.
- Allow students to hold the model, take it apart, and put it back together. Ask students to make observations about the model and have them discuss what they already know about the organs and structures of the human head.
- Use the section of the model featuring the labeling letters to quiz students on which part of the head each letter represents. Make photocopies of the diagram on page 4 to use as a quiz or review. (Perform this activity using the “ear piece” of the head model and the diagram on page 6.)
- Discuss the five senses and how they relate to the model. Ask students to name one of the senses and then locate the organ(s) that works to support that sense.

Look for these related items from Learning Resources®:

LER 1903 Cross-Section Brain Model

LER 1904 Cross-Section Tooth Model

LER 1906 Cross-Section Human Ear Model



**LEARNING
RESOURCES®**

www.LearningResources.com

Visit our website to write a product review
or to find a store near you.



© Learning Resources, Inc., Vernon Hills, IL (U.S.A.)
Learning Resources Ltd., King's Lynn, Norfolk (U.K.)
Please retain our address for future reference.
Made in China. LRM1909-GUD

Fabriqu  en China.
Made in China.

Hecho en China.

Informations   conserver.
Bitte bewahren Sie unsere
Adresse f r sp tere
Nachfragen auf.
Conservar estos datos.

Free Manuals Download Website

<http://myh66.com>

<http://usermanuals.us>

<http://www.somanuals.com>

<http://www.4manuals.cc>

<http://www.manual-lib.com>

<http://www.404manual.com>

<http://www.luxmanual.com>

<http://aubethermostatmanual.com>

Golf course search by state

<http://golfingnear.com>

Email search by domain

<http://emailbydomain.com>

Auto manuals search

<http://auto.somanuals.com>

TV manuals search

<http://tv.somanuals.com>