



INSTALLATION INSTRUCTIONS

©1997 Lennox Industries Inc.
Dallas, Texas

GAS UNITS KITS AND ACCESSORIES

503,771M
10/97

Technical
Publications
Litho U.S.A.

FURNACE TRANSITION KIT

INSTALLATION INSTRUCTIONS FOR FURNACE TRANSITION KIT CAT# 16L44 (LB-93421A), AND CAT# 16L45 (LB-93422A) USED WHEN CONVERTING FROM GSR14 UNITS TO GHR26 UNITS (HORIZONTAL)

SHIPPING AND PACKING LIST

Package 1 of 1 contains:

- 1 - Insulated supply air transition
- 1 - Insulated return air transition
- 4 - Base rails
- 1 - Base brace
- 16 - #8 sheet metal screws
- 1 - Roll of adhesive-backed foam tape (1/8" thick x 5/16" wide)

SHIPPING DAMAGE

Check all components for shipping damage. Consult last carrier immediately if damage is found.

APPLICATION

Table 1 shows furnace transition kit usage. These kits are used when replacing an existing GSR14 horizontal furnace with a GHR26 horizontal furnace. It allows installation of the GHR26 furnace without modification of the existing supply and return air plenums.

Note - GHR26 units can only be installed left side discharge when using these transition kits.

Note - Some GSR14 units may have been installed with little or no clearance to the unit's top side. Since the GHR26 unit's vent exits this side, interference may be encountered. If it is, field fabricated transitions may be required.

Removal of GSR14

Refer to figure 1 for typical GSR14 installation.

- 1 - Set the thermostat to the lowest setting.
- 2 - Disconnect electrical power to GSR14 unit.
- 3 - Shut off gas to GSR14 unit.
- 4 - Disconnect supply and return air plenums.
- 5 - Remove control access panel.
- 6 - Cut combustion air intake pipe and exhaust pipe in location(s) which will allow convenient reconnection of pipes to GHR26 unit, and/or removal of muffler(s) (if installed). Remove muffler(s) (if installed). Support intake and exhaust pipes to prevent damage to pipe joints.
- 7 - Cut condensate drain line in a location which will allow convenient reconnection with GHR26 unit.
- 8 - Disconnect gas line at unit.
- 9 - Disconnect power wiring at unit.
- 10 - Disconnect low voltage wiring at unit.
- 11 - Remove blower access panel.
- 12 - Remove filter from inside of unit (if present) and disconnect return air plenum at unit.
Note - Existing GSR14Q4/5-80/100 filter can be used in GHR26Q4/5-100 units.
- 13 - Remove GSR14 unit.

TABLE 1

GSR14	CABINET WIDTH inches (mm)	GHR26	CABINET WIDTH inches (mm)	KIT CAT# (LB#)
Q3-50	21-1/4 (540)	Q2/3-50	16-1/4 (413)	16L44 (LB-93421A)
Q3-80	21-1/4 (540)	Q3-75	16-1/4 (413)	16L44 (LB-93421A)
Q4/5-80	21-1/4 (540)	Q4/5-100	21-1/4 (540)	16L45 (LB-93422A)
Q4/5-100	21-1/4 (540)	Q4/5-100	21-1/4 (540)	16L45 (LB-93422A)

Note - There is no direct replacement for GSR14Q4-50 unit with a GHR26 unit.

TYPICAL GSR14 HORIZONTAL APPLICATION

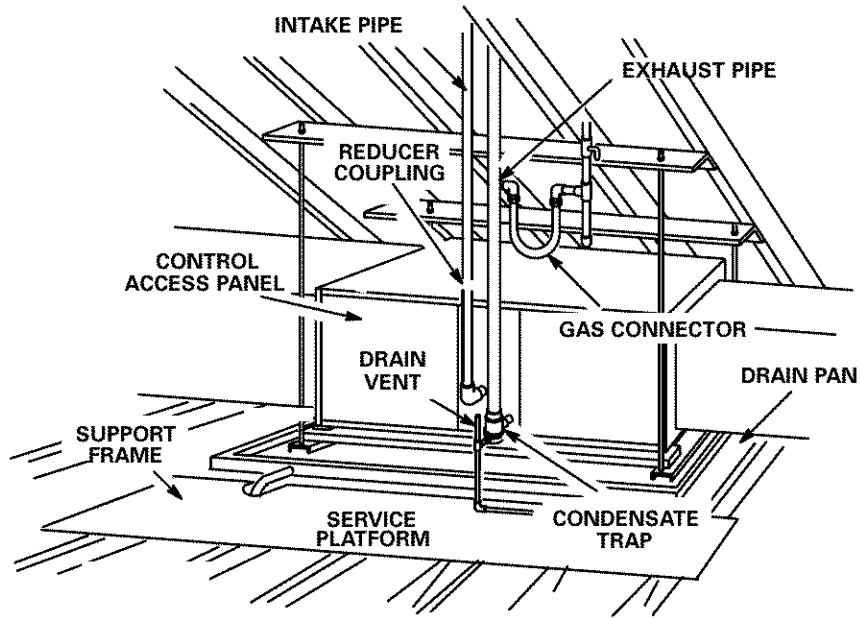


FIGURE 1

INSTALLATION of GHR26

Note - Installation must conform with these instructions and the installation instructions packaged with the GHR26 furnace.

Note - The overall dimensions of the GHR26 and the awkwardness of handling the GHR26 are increased once transitions are installed.

A - Return Air Transition installation.

Refer to figure 2.

- 1 - Lay GHR26 unit on its back (exposed internal parts facing up). (Figure 2 shows installed position.)
- 2 - Remove the three rear-most cabinet screws at return air inlet (3 each side).
- 3 - Cut two strips from roll of adhesive-backed foam tape (provided) to fit two cabinet sides as shown in figure. Apply to cabinet sides.
- 4 - Install transition as shown.
- 5 - Install filter as shown in GHR26 installation instructions. GHR26Q4/5-100 unit will accept installation of GSR14Q4/5-80/100 unit filter. GHR26-50 and -75 units require a field provided 14x25x1 filter.

B - Supply Air Transition Installation.

Refer to figure 2.

- 1 - Remove the three rear-most cabinet screws at supply air inlet (3 each side).
- 2 - Cut two strips from roll of adhesive-backed foam tape (provided) to fit two cabinet sides as shown in figure. Apply to cabinet sides.
- 3 - Install transition as shown.

C - Base Rails Installation.

Refer to figure 2

- 1 - Install base rails as shown in figure 2.

D - Unit Installation

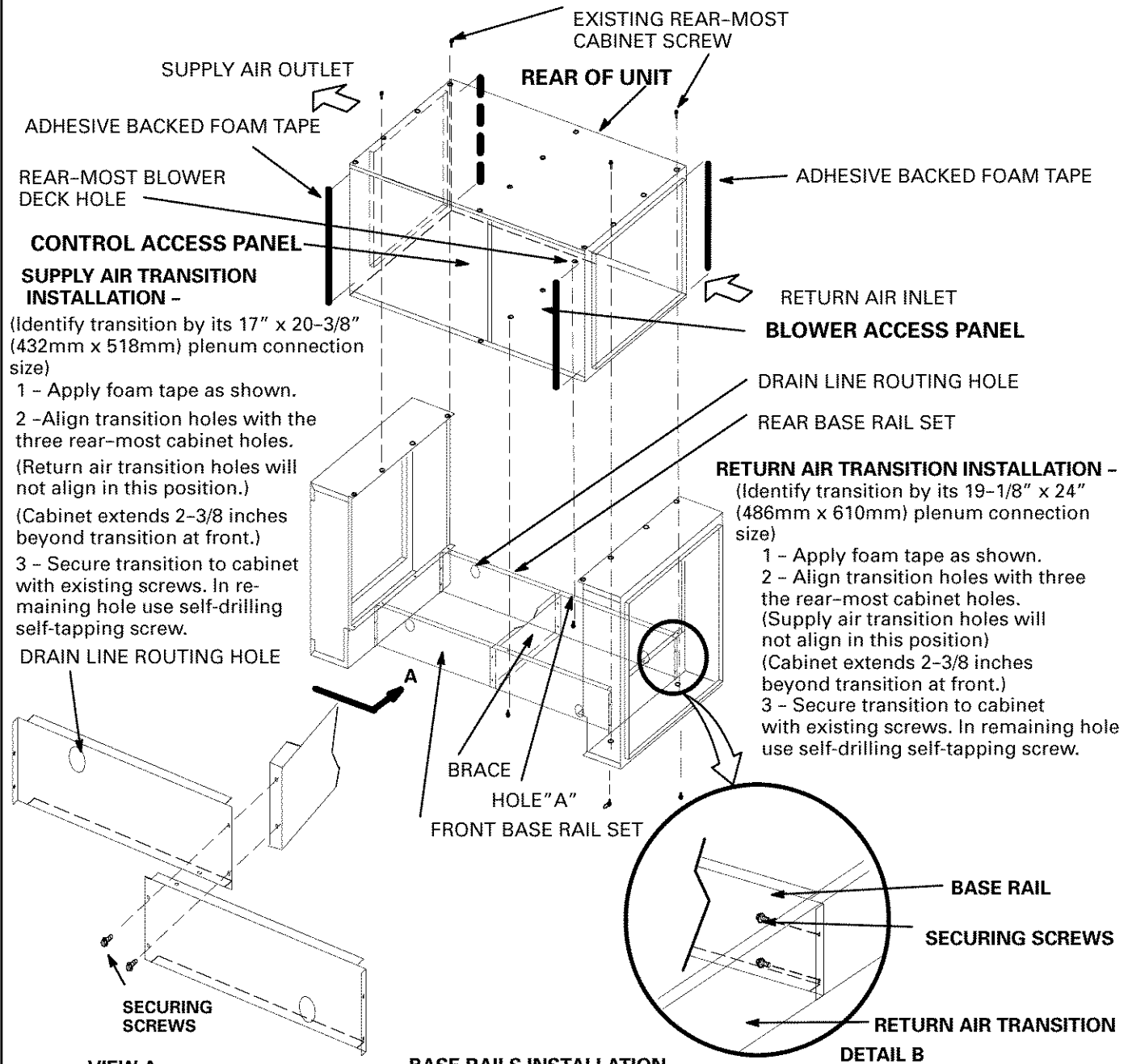
- 1 - Align unit with existing supply air plenum (coil cabinet in air conditioning applications) and return air plenum. Make connections to unit.
- 2 - Connect low voltage wiring as illustrated in GHR26 installation instructions.
- 3 - Connect high voltage wiring as outlined in GHR26 installation instructions.
- 4 - Connect gas piping as outlined in GHR26 installation instructions.
- 5 - Connect venting as outlined in GHR26 installation instructions.

Consult local codes for flexible connector installation restrictions on GHR26 furnace.

Note - Mufflers can not be used in GHR26 installation. Check existing venting for size (diameter and length). It should meet the specifications as outlined in GHR26 installation instructions. If a concentric vent is used for GHR26-100 unit, it must be identified as catalog number 33K97.

- 6 - Connect heat exchanger condensate drain line as outlined in GHR26 unit installation instructions.
Note - Coil drain line must not be connected to heat exchanger condensate drain line. If lines were connected, debris from evaporator could affect heat exchanger operation.
- 7 - Continue with Unit Start-up Section as outlined in GHR26 installation instructions.
Note - See GHR26 installation instructions for heat anticipation settings.

TYPICAL GHR26 INSTALLATION
(LEFT SIDE DISCHARGE ONLY - INSTALLED POSITION SHOWN)



SUPPLY AIR TRANSITION INSTALLATION -
(Identify transition by its 17" x 20-3/8" (432mm x 518mm) plenum connection size)

- 1 - Apply foam tape as shown.
- 2 - Align transition holes with the three rear-most cabinet holes.
(Return air transition holes will not align in this position.)
(Cabinet extends 2-3/8 inches beyond transition at front.)
- 3 - Secure transition to cabinet with existing screws. In remaining hole use self-drilling self-tapping screw.

RETURN AIR TRANSITION INSTALLATION -
(Identify transition by its 19-1/8" x 24" (486mm x 610mm) plenum connection size)

- 1 - Apply foam tape as shown.
- 2 - Align transition holes with three the rear-most cabinet holes.
(Supply air transition holes will not align in this position)
(Cabinet extends 2-3/8 inches beyond transition at front.)
- 3 - Secure transition to cabinet with existing screws. In remaining hole use self-drilling self-tapping screw.

- A - Assemble rails:**
- 1 - Orient two rails used to form front rail set as shown in view A.
(Position drain line routing hole as shown.)
 - 2 - Repeat for rear rail set.
 - 3 - Position brace between front and rear rail sets as shown in main figure.
 - 4 - Attach brace to rail sets with the four screws provided .
- B - Attach rail assembly to transitions and unit:**
- 1 - Remove rear-most blower deck screw.
 - 2 - Align rear rail hole "A" as shown in main figure with rear most blower deck hole.
 - 3 - Secure rear rail set to unit and transitions. (See main figure and detail B)
 - 4 - Repeat for front rail set using third blower deck hole from rear.

FIGURE 2

Free Manuals Download Website

<http://myh66.com>

<http://usermanuals.us>

<http://www.somanuals.com>

<http://www.4manuals.cc>

<http://www.manual-lib.com>

<http://www.404manual.com>

<http://www.luxmanual.com>

<http://aubethermostatmanual.com>

Golf course search by state

<http://golfingnear.com>

Email search by domain

<http://emailbydomain.com>

Auto manuals search

<http://auto.somanuals.com>

TV manuals search

<http://tv.somanuals.com>