



Lenovo USB Portable DVD Burner
GP20N
User Guide

Note

Before using this information and the product it supports, read “Lenovo Limited Warranty and Notice” first.

First Edition (May 2009)

Statement

Thank you for choosing Lenovo products.

Please read the information included in the product package thoroughly and carefully before use. Lenovo (Beijing) Ltd. WILL NOT BE LIABLE for any damages caused by your failure to follow the instructions herein or by any misoperation of this product due to your misunderstanding of the content of this guide.

Lenovo (Beijing) Ltd. has emended and checked the document strictly, but we do not assure that there is no error or oversight.

The pictures in this document are for your reference purpose only. If any of them are different from the actual product, please ignore the pictures.

In order to provide better services, Lenovo (Beijing) Ltd. reserves the right to improve and modify the description and the software program of this product.

Lenovo (Beijing) Ltd. will not be responsible for any data loss caused by malfunction of hardware and software, repair, and other situations; nor will we be responsible for associated indirect loss. Please backup your data properly.

The content of this Quick Start Guide is protected by the law of copyright. Without a written authorization from Lenovo (Beijing) Ltd., you cannot copy, excerpt, transmit through wired or wireless networks, or translate the User's Guide into any other language.

The content of this User's Guide is subject to change without notice.

lenovo, **lenovo** 联想, 联想 are either trademarks or registered trademarks of Lenovo (Beijing) Limited.

Microsoft and its identification, as well as Windows, Windows2000, Windows XP, Windows Vista, Windows Media are either registered trademarks or trademarks of Microsoft Corporation in the United States and/or other countries/territories.

Other products, brands and trade names mentioned in this User's Guide are either trademarks or registered trademarks of Lenovo or their respective owner.

Copyright© 2009 Lenovo (Beijing) Limited, all rights reserved.

Contents

Safety information	vii
---------------------------------	------------

General safety guidelines	ix
--	-----------

Service	ix
Power cords and power adapters	x
Extension cords and related devices	xi
Plugs and outlets	xi
Batteries	xii
Heat and product ventilation	xiii

Chapter 1. About the Lenovo USB Portable DVD Burner	1
---	----------

Product description	1
Locating the controls	2
Hardware and software requirements	3
Main features	4

Chapter 2. Installing and Using the Lenovo USB Portable DVD Burner	5
---	----------

Installing the drive	5
Connecting the drive	5
Loading the media	7
Ejecting the media	7
Manually ejecting the media	8
Removing the drive	9
Maintaining the drive	10
Caring for the drive	10
Cleaning the drive	10

Chapter 3. Working with the Lenovo USB Portable DVD Burner	11
Before you begin	11
Using the media	12
Handling and caring for the media	12
Using the DVD-RAM media	13
Using the CDs and DVDs media	13
Using the CD-Rs and CD-RWs media	14
Using the DVD-Rs, DVD+Rs, DVD+RWs, and DVD-RWs media	14
Chapter 4. Troubleshooting	15
Appendix A. Product specifications	19
Appendix B. Electronic emission notices	21
Federal Communications Commission (FCC) Declaration of Conformity	21
Appendix C. Restriction of Hazardous Substances Directive (RoHS)	27
China RoHS	27
Turkish statement of compliance	27

Safety information

Before installing this product, read the Safety Information.

Antes de instalar este produto, leia as Informações de Segurança.

Antes de instalar este produto, leia as Informações sobre Segurança.

Antes de instalar este producto lea la información de seguridad. Avant d'installer ce produit, lisez les consignes de sécurité.

Ennen kuin asennat tämän tuotteen, lue turvaohjeet kohdasta Safety Information.

Läs säkerhetsinformationen innan du installerar den här produkten.

Læs sikkerhedsforskrifterne, før du installerer dette produkt.

Lees voordat u dit product installeert eerst de veiligheidsvoorschriften.

Les sikkerhetsinformasjonen (Safety Information) før du installerer dette produktet.

Prima di installare questo prodotto, leggere le Informazioni sulla Sicurezza.

Vor der Installation dieses Produkts die Sicherheitshinweise lesen.

مج، يجب قراءة دات السلامة

Před instalací tohoto produktu si přečtěte příručku bezpečnostních instrukcí.

Πριν εγκαταστήσετε το προϊόν αυτό, διαβάστε τις πληροφορίες ασφάλειας (safety information).

לפני שתתקינו מוצר זה, קראו את הוראות הבטיחות.

A termék telepítése előtt olvassa el a Biztonsági előírásokat!

Prije instalacije ovog produkta obavezno pročitajte Sigurnosne Upute.

製品の設置の前に、安全情報をお読みください。

본 제품을 설치하기 전에 안전 정보를 읽으십시오.

Пред да се инсталира овој продукт, прочитајте информацијата за безбедност.

Przed zainstalowaniem tego produktu, należy zapoznać się z książką "Informacje dotyczące bezpieczeństwa" (Safety Information).

Перед установкой продукта прочтите инструкции по технике безопасности.

在安裝本產品之前，請仔細閱讀 **Safety Information**（安全信息）。

Pred inštaláciou tohto produktu si prečítajte bezpečnostné informácie.

Pred namestitvijo tega proizvoda preberite Varnostne informacije.

安裝本產品之前，請先閱讀「安全資訊」。

General safety guidelines

Always observe the following precautions to reduce the risk of injury and property damage.

Service

Do not attempt to service a product yourself unless instructed to do so by the Customer Support Center. Use only a service provider who is approved to repair your particular product.

Note: Some parts can be upgraded or replaced by the customer.

These parts are referred to as Customer Replaceable Units, or CRUs. Lenovo expressly identifies CRUs as such, and provides documentation with instructions when it is appropriate for customers to replace those parts. You must closely follow all instructions when performing such replacements. The Off state of a power indicator does not necessarily mean that voltage levels inside a product are zero. Always make sure that the power is turned off and that the product is unplugged from any power source before you attempt the replacement. If you have any questions or concerns, contact the Customer Support Center.

Power cords and power adapters

Use only the power cords and power adapters supplied by the product manufacturer.

Never wrap a power cord around the power adapter or other object. Doing so can stress the cord in ways that can cause the cord to fray, crack or crimp. This can present a safety hazard.

Always route power cords so that they will not be walked on, tripped over, or pinched by objects.

Protect the cord and power adapters from liquids. For instance, do not leave your cord or power adapter near sinks, tubs, toilets, or on floors that are cleaned with liquid cleansers. Liquids can cause a short circuit, particularly if the cord or power adapter has been stressed by misuse. Liquids can also cause gradual corrosion of the power cord terminals and/or the connector terminals on the adapter which can eventually result in overheating.

Always connect power cords and signal cables in the correct order and ensure that all power cord connectors are securely and completely plugged into receptacles.

Do not use any power adapter that shows corrosion at the ac input pins and/or shows signs of overheating (such as deformed plastic) at the ac input or anywhere on the power adapter.

Do not use any power cords where the electrical contacts on either end show signs of corrosion or overheating or where the power cord appears to have been damaged in any way.

Extension cords and related devices

Ensure that extension cords, surge protectors, uninterruptible power supplies, and power strips that you use are rated to handle the electrical requirements of the product. Never overload these devices. If power strips are used, the load should not exceed the power strip input rating. Consult an electrician for more information if you have questions about power loads, power requirements, and input ratings.

Plugs and outlets

If a receptacle (power outlet) that you intend to use with your computer equipment appears to be damaged or corroded, do not use the outlet until it is replaced by a qualified electrician.

Do not bend or modify the plug. If the plug is damaged, contact the manufacturer to obtain a replacement.

Some products are equipped with a three-pronged plug. This plug fits only into a grounded electrical outlet. This is a safety feature. Do not defeat this safety feature by trying to insert it into a non-grounded outlet. If you cannot insert the plug into the outlet, contact an electrician for an approved outlet adapter or to replace the outlet with one that enables this safety feature. Never overload an electrical outlet. The overall system load should not exceed 80 percent of the branch circuit rating. Consult an electrician for more information if you have questions about power loads and branch circuit ratings.

Be sure that the power outlet you are using is properly wired, easily accessible, and located close to the equipment. Do not fully extend power cords in a way that will stress the cords.

Connect and disconnect the equipment from the electrical outlet carefully.

Batteries

All personal computers manufactured by Lenovo contain a non-rechargeable coin cell battery to provide power to the system clock. In addition many mobile products such as notebook PCs utilize a rechargeable battery pack to provide system power when in portable mode. Batteries supplied by Lenovo for use with your product have been tested for compatibility and should only be replaced with Lenovo approved parts.

Never attempt to open or service any battery. Do not crush, puncture, or incinerate batteries or short circuit the metal contacts. Do not expose the battery to water or other liquids. Only recharge the battery pack strictly according to instructions included in the product documentation.

Battery abuse or mishandling can cause the battery to overheat, which can cause gasses or flame to “vent” from the battery pack or coin cell. If your battery is damaged, or if you notice any discharge from your battery or the buildup of foreign materials on the battery leads, stop using the battery and obtain a replacement from the battery manufacturer.

Batteries can degrade when they are left unused for long periods of time. For some rechargeable batteries (particularly Lithium Ion batteries), leaving a battery unused in a discharged state could

increase the risk of a battery short circuit, which could shorten the life of the battery and can also pose a safety hazard. Do not let rechargeable Lithium-Ion batteries completely discharge or store these batteries in a discharged state.

Heat and product ventilation

Computers, AC power adapters, and many accessories can generate heat when turned on and when batteries are charging. Always follow these basic precautions:

- Do not leave your computer, AC power adapter, or accessories in contact with your lap or any part of your body for an extended period when the products are functioning or when the battery is charging. Your computer, AC power adapter, and many accessories produce some heat during normal operation. Extended contact with the body could cause discomfort or, potentially, a skin burn.
- Do not charge the battery or operate your computer, AC power adapter, or accessories near flammable materials or in explosive environments.
- Ventilation slots, fans, and heat sinks are provided with the product for safety, comfort, and reliable operation. These features might inadvertently become blocked by placing the product on a bed, sofa, carpet, or other flexible surface. Never block, cover, or disable these features.

Chapter 1. About the Lenovo USB Portable DVD Burner

This chapter contains product description, installation requirements and main features of the Lenovo USB Portable DVD Burner (hereafter referred to as the drive).

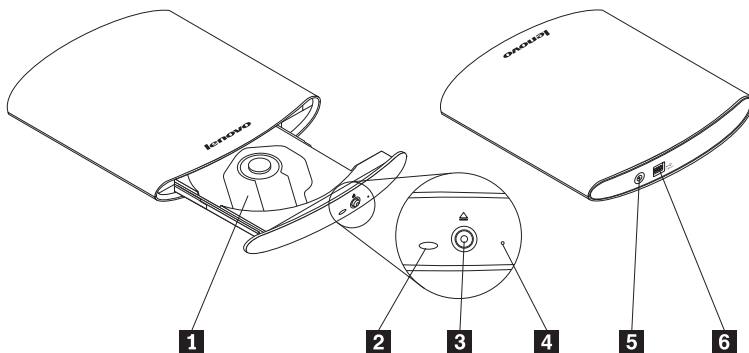
Product description

The Lenovo USB Portable DVD Burner is a portable DVD and CD recordable drive that easily attaches to the USB 2.0 connectors on your computer through a USB data cable and a USB power cable. The drive conforms with industry standard specifications for DVD-RAM, DVD-RW, DVD-R, DVD+RW, DVD+R, DVD-R (dual layer), DVD+R (double layer), CD-RW, CD-R, and CD-ROM media.

Notice: There is no USB power cable for this model, but the drive can be powered up directly by USB data cable.

Locating the controls

The following figure shows the locations of the controls on the drive.



1 Disc tray

Used to firmly seat the medium with the label facing up on the disc tray.

Attention: Push the CD/DVD medium down until it clicks and is secured in the center.

2 LED indicator

The LED indicates the status of the drive.

- **LED blinks once:** indicates that the drive is powered by the computer no matter you connect the USB data cable or USB power cable to your computer; or indicates that you have pressed the Eject button and the disc tray will be ejected.
- **LED blinks and stops:** indicates that the drive detects no data.
- **LED glitters:** indicates that the drive is writing or reading the data on the medium.

3 Eject button

Press this button to open the disc tray.

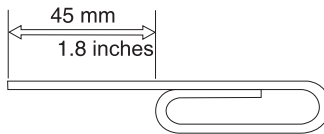
Attention: An electrical locking mechanism is used in this drive so that an erroneous operation does not open the disc tray during write. Make sure that the power is on and the drive is not in operation before pressing the Eject button to open the disc tray.

If the disc tray cannot be opened when you press the Eject button, or if the disc tray needs to be opened when the power is not supplied from the USB power cable, use the emergency eject hole **4** in the front panel of the drive.

Check that nothing is placed in front of the disc tray when ejecting.

4 Emergency eject

The emergency eject is used for ejecting the medium in an emergency when the drive is powered off. Insert a paper clip into the emergency eject hole to open the disc tray.



5 DC IN connector

Used to connect the USB power cable.

6 USB connector

Used to connect the USB data cable.

Hardware and software requirements

To use the drive, your computer must meet the following requirements:

- Two USB 2.0 connectors available
- Microsoft® Windows® XP or Microsoft Windows Vista® operating system

Main features

The main features of the Lenovo USB Portable DVD Burner include:

- **Easy connection**

The drive incorporates the interface conforming to the USB 2.0 High Speed standard. Thus, it can easily be connected to or disconnected from your computer when the computer is powered on.

- **Conformance to media manufactured by major media manufacturers**

The drive can play almost all the CD and DVD media manufactured by major media manufacturers. Also, the media written by the drive guarantee a high write quality.

Note: For more information on write and read speeds, see Appendix A, "Product specifications," on page 19.

- **Incorporation of the buffer underrun prevention function**

The drive incorporates the buffer underrun prevention function, which helps to prevent buffer underrun errors that cause a write failure onto the CD and DVD media.

- **Tray loading**

The drive has a tray-loading mechanism that allows easy loading and ejection of a medium. The tray can be opened manually or by using software that works with the computer.

- **Power configuration**

The drive operates with one USB power cable and one USB data cable.

Chapter 2. Installing and Using the Lenovo USB Portable DVD Burner

This chapter provides information on how to install, use, remove and maintain the Lenovo USB Portable DVD Burner.

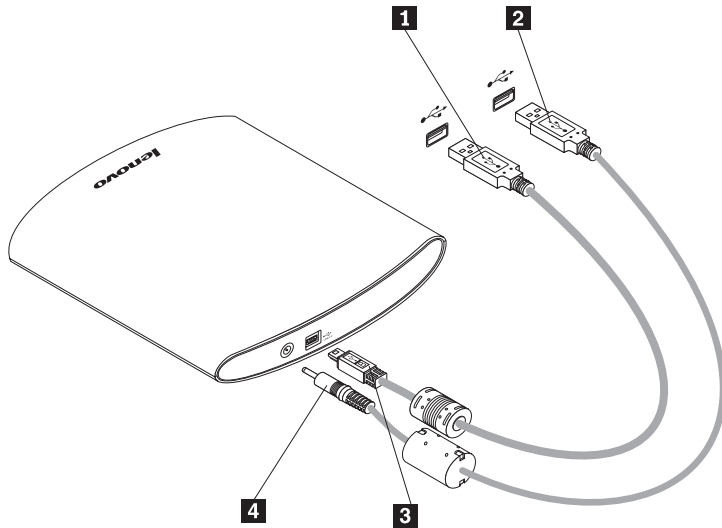
Installing the drive

Before installing the drive, check the locations of the controls on the drive. See "Locating the controls" on page 2.

Connecting the drive

This section provides instructions to connect the drive to your computer with the provided USB data cable and USB power cable.

To connect the drive to your computer, do the following:



1. Turn on your computer.
2. Insert the DC connector **4** of the USB power cable into the DC IN connector on the drive.
3. Insert the USB A plug **2** of the USB power cable into the USB connector on your computer.
4. Insert the USB Mini-B plug **3** of the USB data cable into the USB connector on the drive.
5. Insert the USB A plug **1** of the USB data cable into the USB connector on your computer.

Loading the media

To load the media into the disc tray of the drive, do the following:

1. Press the Eject button of the drive to open the disc tray.
2. Place the medium on the tray with the label facing upward. Align the center hole of the medium with the clamp at the center of the tray and securely fit the medium in by pressing the outer vicinity of the center hole.
3. Gently close the disc tray and push the disc tray in until it is completely locked.

Note: Do not use force or insert foreign objects to open the disc tray.

If the disc tray does not open when you press the Eject button, see "Manually ejecting the media" for more information.

4. The LED indicator glitters if the medium is correctly loaded and recognized by the drive.

Ejecting the media

To eject the media from the disc tray of the drive, do the following:

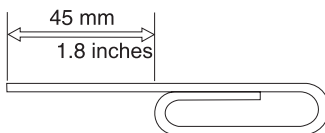
1. Press the Eject button of the drive to automatically open the disc tray.
2. Carefully lift the edge of the medium from the disc tray while pressing the center section of the clamp.
3. Gently close the disc tray until it is completely locked.

Manually ejecting the media

If you press the Eject button and the disc tray does not slide out, you can use the emergency eject function to eject the media.

To manually eject the medium from the disc tray of the drive, do the following:

1. Turn off the computer
2. Straighten a large paper clip to form a tool, as shown in the figure below.



Note: The straightened end must extend at least 45 mm (1.8 inches).

3. Insert the extended end into the emergency eject hole on the front panel of the drive.
4. Push the paper clip until the disc tray opens.
5. Gently pull out the disc tray until you can remove the medium.

CAUTION:

Be sure the drive is powered off when using the emergency eject. Use the Eject button instead of the emergency eject except in an emergency.

Removing the drive

Windows XP and Windows Vista operating systems have the native drivers for USB DVD burner. When the drive is connected, Windows will automatically install the appropriate driver and the drive will be ready for use. You do not have to perform any special installation or removal procedures. However, to avoid any data error, it is recommended that you remove the drive from your system by performing the following procedure.

1. Exit the program that uses the drive.
2. Make sure that the LED indicator of the drive is off.
3. Click the **Safely Remove Hardware** icon on the system tray.
4. Select the drive name to remove. The Safe to Remove Hardware confirmation window opens.

Note: The confirmation window message indicated above may differ depending on the versions of your operating system. Refer to the instruction manual of your computer or operating system for details.

5. Click **OK**. The drive is safely removed from the system.
6. Remove the USB data cable from the USB connector of the computer.

Maintaining the drive

This section provides maintenance information for the drive.

Caring for the drive

To protect your drive during operation, observe these precautions:

- Remove the medium from the drive before moving the drive.
- Do not insert foreign objects into the drive.
- Do not stack objects on the drive.
- Do not remove the drive cover or attempt to service the drive.
- Do not push hard on the top of the drive.
- Do not operate the drive under any of these conditions:
 - High temperature, high humidity, or direct sunlight
 - Excessive vibration, sudden shock, or inclined surface
 - Excessive dust

Cleaning the drive

Wipe off the dust on the drive using a soft cloth. If the dust is persistent, use a cloth dampened with a diluted neutral detergent after squeezing all the water out. If liquid is allowed into the drive, it may cause a serious malfunction, an electric shock or a fire. When cleaning with liquid, be sure to remove the USB power cable and the USB data cable from the drive after disconnecting the drive from your computer.

Do not apply solvents such as benzene or thinner. Chemical cleaners for home or industrial use may damage the coating of the drive.

Chapter 3. Working with the Lenovo USB Portable DVD Burner

This chapter provides information on how to use media when working with the Lenovo USB Portable DVD Burner.

Before you begin

For best results, review these guidelines before using the drive:

- Do not move your host computer or drive while formatting or writing to a medium as this might cause data errors. Also, minimize typing while formatting or writing to a medium, as this might also cause data errors.
- Keep the host computer and USB drive on a flat surface when writing to a medium.
- Turn the screen saver off. Using a screen saver might interrupt the formatting and writing process.
- Do not put your host computer into hibernation or suspend mode while writing to a medium.

Note: The read and write results of the drive depend upon the quality and features of the DVD or CD medium used.

Using the media

This section contains important information and instructions on how to use the media in the drive.

Handling and caring for the media

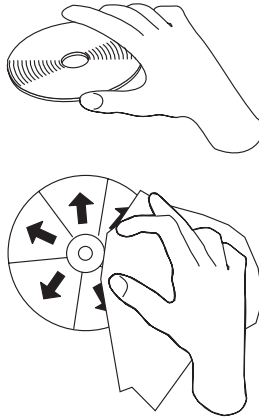
Carefully handle and clean media, especially writable media types such as CD-R and CD-RW media, so that they remain readable. You can prolong the life of your media by using these precautions:

- Always store media in their original packaging.
- Always store media out of direct sunlight.
- Always store media away from direct heat sources.
- Remove media from the computer when not in use.
- Check media for cracks *before* each use.

IMPORTANT: Do not use media that are cracked.

- Do not force media into the computer or packaging.
- Do not bend or flex media.
- Do not use commercial cleaners to clean media.
- Do not write on the surface of media.
- Handle media by the edges or the center hole.
- Do not touch the surface of media.
- To remove dust or fingerprints, wipe media from the center to the edge with a soft, lint-free cloth.

Attention: Wiping a medium using a circular motion can cause data loss.



Using the DVD-RAM media

DVD-RAM media are available in single-sided and double-sided versions.

The 2.6 GB and 4.7 GB versions are single-sided. The 9.4 GB version is double-sided. To access the data on both sides of a medium, you must remove the medium from the drive, turn it over, and re-insert it into the drive. DVD-RAM media must be removed from the cartridge before using this drive.

Using the CDs and DVDs media

To use CDs and DVDs, do the following:

1. Turn on the computer.
2. Press the Eject button on the front panel of the drive.
3. Insert a medium in the disc tray with the label facing up.
4. Close the drive by gently closing the disc tray.
5. Wait for the drive LED indicator to glitter.
6. Double-click the CD-ROM or DVD-RAM/DVD-R/DVD-RW icon.

Using the CD-Rs and CD-RWs media

The drive can write to both CD-R and CD-RW media. CD-R media can not be erased, but can be used with standard CD-ROM drives and CD players.

You can use CD-R media to record audio tracks, store data, archive files, and copy files from another CD.

CD-RW media can be erased and rewritten, but can be used only with newer Multi-Read and CD-RW-compatible CD-ROM and DVD-ROM drives. You can use CD-RW media to back up, store, and update files or to copy files from another CD.

Notes:

1. CD-R media are playable on audio CD players. CD-RW media are not playable on most audio CD players.
2. Ultra Speed CD-RW media writing is supported.

Using the DVD-Rs, DVD+Rs, DVD+RWs, and DVD-RWs media

The drive can write to both DVD-R and DVD-RW media. DVD-R media cannot be erased, but can be used with standard DVD-ROM drives and DVD players.

You can use DVD-R media to record audio tracks, store data, archive files, and copy files from another DVD. Double or dual layer media has a storage capacity of up to 8.5 GB.

DVD-RW media can be erased and rewritten, but can be used only with newer Multi-Read and DVD-RW-compatible DVD-ROM drives. You can use DVD-RW media to back up, store, and update files or to copy files from another DVD.

Chapter 4. Troubleshooting

Computer problems can be caused by hardware, software, or user errors. The information in this section will help you solve problems or gather helpful information you can pass on to a service technician. You might also need to refer to your computer or operating-system publications.

Review this list for any problem descriptions that might fit your situation:

The Lenovo USB Portable DVD Burner is not recognized by the operating system.

Ensure that the USB data cable goes from the host computer to the USB connector of the drive. Ensure that the USB power cable goes from the host computer to the USB connector of the drive.

You cannot create a multi-session medium.

Be sure that there is enough space left on the medium for another session. Writing a session requires lead-in and lead-out space (about 15 MB) in addition to the data that is recorded.

You cannot successfully write to a CD-R, CD-RW, DVD-R, DVD-RAM, or DVD-RW medium.

To solve the problem, do the following:

1. Make sure both the USB data cable and the USB power cable are connected.
2. Verify that the process is not being interrupted by a screen saver, an antivirus program, an Internet or e-mail program, or other software. Disable the functions that might interrupt the write operation.

Note: Replace the medium if it is damaged or scratched.

3. Verify that the hard disk has been defragmented.
4. Consult the hard disk drive manufacturer or vendor if an older hard disk drive is conducting a thermal recalibration during a write operation.
5. Disable the Windows Auto Insert Notify function on your optical CD-ROM and CD-RW drives.

You cannot eject a CD or DVD medium.

To solve the problem, ensure that the drive is not in the process of writing to a medium, and then do the following:

1. Right-click on the drive in **My Computer**.
2. Select **Eject** to eject the medium.
3. Turn off the computer. Wait 45 seconds; then turn on the computer and press the Eject button again.
4. If the above actions do not work, use the emergency eject. See “Manually ejecting the media” on page 8.

You cannot read from the CD or DVD medium after successfully writing to it.

To solve the problem, do the following:

1. If you can view the CD or DVD medium in another CD or DVD player or you can see previous sessions, the directory information might be damaged on the volume, making it unreadable.
2. You might have a damaged CD-R, CD-RW, DVD-R, DVD-RAM, or DVD-RW medium. Try a new medium or another brand of CD or DVD medium.
3. If you can read from a CD-RW, DVD-RAM, or DVD-RW medium in the writing drive, but not in another Multi-Read drive, make sure that a correct CD/DVD reader program is installed in the computer.
4. Avoid writing at the slower 1X speed unless required by your computer.
5. Make sure both the USB data cable and the USB power cable are connected.

Appendix A. Product specifications

This appendix includes the following information for the Lenovo USB Portable DVD Burner:

- Physical specifications
- Power requirements
- Environmental requirements
- Read speeds
- Write speeds

Physical specifications

The physical specifications¹ of the drive are listed in this table:

Physical specifications	
Height	24 mm (0.94 inch)
Width	156 mm (6.14 inches)
Length	165 mm (6.50 inches)
Weight	380 g (0.84 pound)

Power requirements

This table lists the power specifications for the drive. The power specifications are measured at the drive power connector and are nominal values.

Power specifications	Voltage	Average	Maximum
USB Standard Bus Power	5 V DC	850 mA	1.6 A

Environmental requirements

Specifications	Operational	Non-operational
Temperature	+5 °C to +40 °C	-30 °C to +60 °C
Relative humidity	15% to 80%	10% to 90%

Read Speeds

Media	Maximum Speed
DVD-R/+R	8x CAV
DVD-RW/+RW	8x CAV
DVD-R DL/+R DL	8x CAV
DVD ROM	8x CAV
DVD-RAM	5x PCAV
CD-R/RW/ROM	24x CAV

Write Speeds

Media	Maximum speed
DVD-R/+R	8x CAV
DVD-RW/+RW	6x ZCLV/8x ZCLV
DVD-R DL/+R DL	6x ZCLV
DVD-RAM	5x PCAV
CD-R	24x CAV
CD-RW	24x ZCLV

Note: 1x CD = 150 KB/s

1x DVD = 1.385 MB/s

1 KB = 10^3 bytes, 1 KB/s = 10^3 bytes per second

1 MB = 10^6 bytes, 1 MB/s = 10^6 bytes per second

1. Product-description data represents Lenovo's design objectives and is provided for comparative purposes; actual results might vary based on a variety of factors. This product data does not constitute a warranty. Data is subject to change without notice.

Appendix B. Electronic emission notices

The following information refers to the Lenovo USB Portable DVD Burner.

Federal Communications Commission (FCC) Declaration of Conformity

Lenovo USB Portable DVD Burner

This equipment has been tested and found to comply with the limits for a Class B digital device, pursuant to Part 15 of the FCC Rules. These limits are designed to provide reasonable protection against harmful interference in a residential installation. This equipment generates, uses, and can radiate radio frequency energy and, if not installed and used in accordance with the instructions, may cause harmful interference to radio communications. However, there is no guarantee that interference will not occur in a particular installation. If this equipment does cause harmful interference to radio or television reception, which can be determined by turning the equipment off and on, the user is encouraged to try to correct the interference by one or more of the following measures:

- Reorient or relocate the receiving antenna.
- Increase the separation between the equipment and receiver.
- Connect the equipment into an outlet on a circuit different from that to which the receiver is connected.
- Consult an authorized dealer or service representative for help.

Lenovo is not responsible for any radio or television interference caused by using other than recommended cables and connectors or by unauthorized changes or modifications to this equipment. Unauthorized changes or modifications could void the user's authority to operate the equipment.

This device complies with Part 15 of the FCC Rules. Operation is subject to the following two conditions: (1) this device may not cause harmful interference, and (2) this device must accept any interference received, including interference that may cause undesired operation.

Responsible party:

Lenovo (United States) Incorporated
1009 Think Place - Building One
Morrisville, NC 27560
Phone Number: 919-294-5900



Industry Canada Class B emission compliance statement

This Class B digital apparatus complies with Canadian ICES-003.

Avis de conformité à la réglementation d'Industrie Canada

Cet appareil numérique de la classe B est conforme à la norme NMB-003 du Canada.

EU-EMC Directive (2004/108/EC) EN 55022 class B Statement of Compliance



Deutschsprachiger EU Hinweis:

Hinweis für Geräte der Klasse B EU-Richtlinie zur

Elektromagnetischen Verträglichkeit Dieses Produkt entspricht den Schutzanforderungen der EU-Richtlinie 2004/108/EG (früher 89/336/EWG) zur Angleichung der Rechtsvorschriften über die elektromagnetische Verträglichkeit in den EU-Mitgliedsstaaten und hält die Grenzwerte der EN 55022 Klasse B ein.

Um dieses sicherzustellen, sind die Geräte wie in den Handbüchern beschrieben zu installieren und zu betreiben. Des Weiteren dürfen auch nur von der Lenovo empfohlene Kabel angeschlossen werden. Lenovo übernimmt keine Verantwortung für die Einhaltung der Schutzanforderungen, wenn das Produkt ohne Zustimmung der Lenovo verändert bzw. wenn Erweiterungskomponenten von Fremdherstellern ohne Empfehlung der Lenovo gesteckt/eingebaut werden.

Deutschland:

Einhaltung des Gesetzes über die elektromagnetische

Verträglichkeit von Betriebsmitteln Dieses Produkt entspricht dem "Gesetz über die elektromagnetische Verträglichkeit von Betriebsmitteln" EMVG (früher "Gesetz über die elektromagnetische Verträglichkeit von Geräten"). Dies ist die Umsetzung der EU-Richtlinie 2004/108/EWG (früher 89/336/EWG) in der Bundesrepublik Deutschland.

Zulassungsbescheinigung laut dem Deutschen Gesetz über die elektromagnetische Verträglichkeit von Betriebsmitteln, EMVG vom 20. Juli 2007 (früher Gesetz über die elektromagnetische Verträglichkeit von Geräten), bzw. der EMV EG Richtlinie 2004/108/EC (früher 89/336/EWG), für Geräte der Klasse B.

Dieses Gerät ist berechtigt, in Übereinstimmung mit dem Deutschen EMVG das EG-Konformitätszeichen - CE - zu führen. Verantwortlich für die Konformitätserklärung nach Paragraph 5 des EMVG ist die Lenovo (Deutschland) GmbH, Gropiusplatz 10, D-70563 Stuttgart.

Informationen in Hinsicht EMVG Paragraph 4 Abs. (1) 4:

Das Gerät erfüllt die Schutzanforderungen nach EN 55024 und EN 55022 Klasse B.

European Union - Compliance to the Electromagnetic Compatibility Directive

This product is in conformity with the protection requirements of EU Council Directive 2004/108/EC on the approximation of the laws of the Member States relating to electromagnetic compatibility. Lenovo cannot accept responsibility for any failure to satisfy the protection requirements resulting from a non-recommended modification of the product, including the installation of option cards from other manufacturers.

This product has been tested and found to comply with the limits for Class B Information Technology Equipment according to European Standard EN 55022. The limits for Class B equipment were derived for typical residential environments to provide reasonable protection against interference with licensed communication devices.

Avis de conformité à la directive de l'Union Européenne

Le présent produit satisfait aux exigences de protection énoncées dans la directive 2004/108/EC du Conseil concernant le rapprochement des législations des Etats membres relatives à la

compatibilidad electromagnética. Lenovo declina toda responsabilidad en caso de no-respecto de esta directiva resultante de una modificación no recomendada del producto, y compris l'ajout de tarjetas en opción no Lenovo.

Este producto respeta los límites de las características de inmunidad de los aparatos de tratamiento de la información definidos por la clase B de la norma europea EN 55022 (CISPR 22). La conformidad con las especificaciones de la clase B ofrece una garantía aceptable frente a las perturbaciones con los aparatos de comunicación autorizados, en las zonas residenciales.

Unión Europea - Normativa EMC

Este producto cumple los requisitos de protección del Consejo de la UE, Directiva 2004/108/EC en lo que a la legislación de los Estados Miembros sobre compatibilidad electromagnética se refiere.

Lenovo no puede aceptar responsabilidad alguna si este producto deja de satisfacer dichos requisitos de protección como resultado de una modificación no recomendada del producto, incluyendo el ajuste de tarjetas de opción que no sean Lenovo.

Este producto ha sido probado y cumple los límites para Equipos Informáticos Clase B de conformidad con el Estándar Europeo EN 55022. Los límites para los equipos de Clase B se han establecido para entornos residenciales típicos a fin de proporcionar una protección razonable frente a las interferencias con dispositivos de comunicación licenciados.

Unione Europea - Directiva EMC (Conformidad electromagnética)

Questo prodotto è conforme alle normative di protezione ai sensi della Direttiva del Consiglio dell'Unione Europea 2004/108/EC sull'armonizzazione legislativa degli stati membri in materia di compatibilità elettromagnetica.

Lenovo non accetta responsabilità alcuna per la mancata conformità alle normative di protezione dovuta a modifiche non consigliate al prodotto, compresa l'installazione di schede e componenti di marca diversa da Lenovo.

Le prove effettuate sul presente prodotto hanno accertato che esso rientra nei limiti stabiliti per le apparecchiature di informatica Classe B ai sensi del Norma Europea EN 55022. I limiti delle apparecchiature della Classe B sono stati stabiliti al fine di fornire ragionevole protezione da interferenze mediante dispositivi di comunicazione in concessione in ambienti residenziali tipici.

Korea Class B Compliance

이 기기는 가정용으로 전자파 적합등록을 한 기기로서
주거지역에서는 물론 모든 지역에서 사용할 수 있습니다.


Japan VCCI Class B Compliance

この装置は、情報処理装置等電波障害自主規制協議会（VCCI）の基準に基づくクラスB情報技術装置です。この装置は、家庭環境で使用することを目的としていますが、この装置がラジオやテレビジョン受信機に近接して使用されると、受信障害を引き起こすことがあります。
取扱説明書に従って正しい取り扱いをして下さい。

Appendix C. Restriction of Hazardous Substances Directive (RoHS)

China RoHS

The information in the following table is applicable for products manufactured on or after March 1, 2007 for sale in the People's Republic of China.

Lenovo 电脑选件	有毒有害物质或元素					
	铅 (Pb)	汞 (Hg)	镉 (Cd)	六价铬 (Cr(VI))	多溴联苯 (PBB)	多溴二苯醚 (PBDE)
USB存储设备	X	○	○	○	○	○
<p>○：表示该有毒有害物质在该部件所有均质材料中的含量均在SJ/T 11363-2006标准规定的限量要求以下。</p> <p>X：表示该有毒有害物质至少在该部件的某一均质材料中的含量超出SJ/T 11363-2006标准规定的限量要求。</p> <p>对于销往欧盟的产品，标有“X”的项目均符合欧盟指令2002/95/EC 豁免条款。</p> <p> 在中华人民共和国境内销售的电子信息产品上将印有“环保使用期”(EPuP)符号。圆圈中的数字代表产品的正常环保使用年限。</p>						

Turkish statement of compliance

The Lenovo product meets the requirements of the Republic of Turkey Directive on the Restriction of the Use of Certain Hazardous Substances in Electrical and Electronic Equipment (EEE).

Lenovo ürünü Türkiye cumhuriyeti'nin Elektrikli ve elektronik eşyalardaki zararlı madde kullanımının sınırlandırılması hakkındaki direktif şartlarına uygundur (EEE).

EEE Yönetmeliğine Uygundur.

lenovo

Version 2.0

Free Manuals Download Website

<http://myh66.com>

<http://usermanuals.us>

<http://www.somanuals.com>

<http://www.4manuals.cc>

<http://www.manual-lib.com>

<http://www.404manual.com>

<http://www.luxmanual.com>

<http://aubethermostatmanual.com>

Golf course search by state

<http://golfingnear.com>

Email search by domain

<http://emailbydomain.com>

Auto manuals search

<http://auto.somanuals.com>

TV manuals search

<http://tv.somanuals.com>