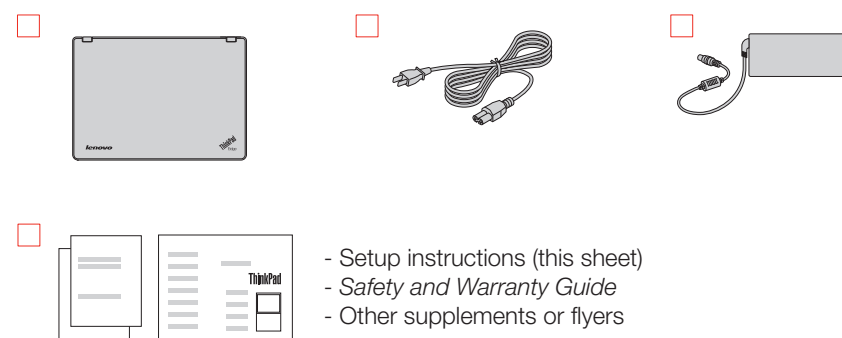


ThinkPad Edge E420s Setup Poster

11/20/2010

Unpack

Some models may contain items that are not listed.

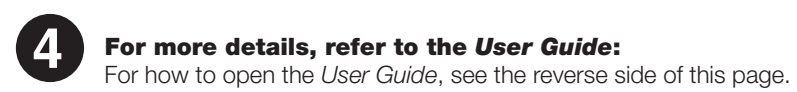
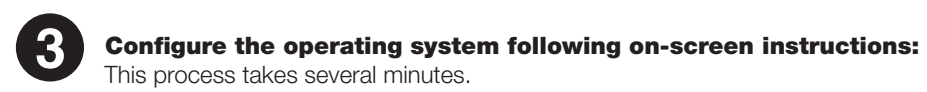
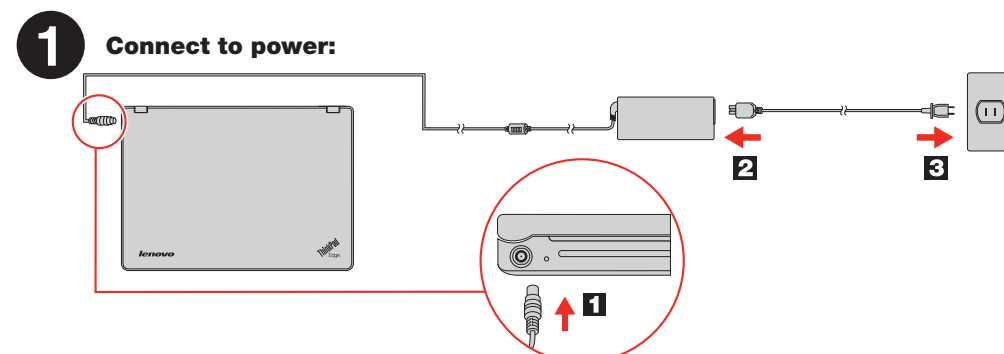


Note: No recovery disc is provided. Instead, everything needed for recovering factory-installed files and applications is provided in the Lenovo® partition on your hard disk drive. If you remove the Lenovo partition, be sure to create a recovery disc. For more information, see "Recovery overview" in the *User Guide*.

Initial setup instructions



Read the safety notices and important tips in the included manuals before using your computer.

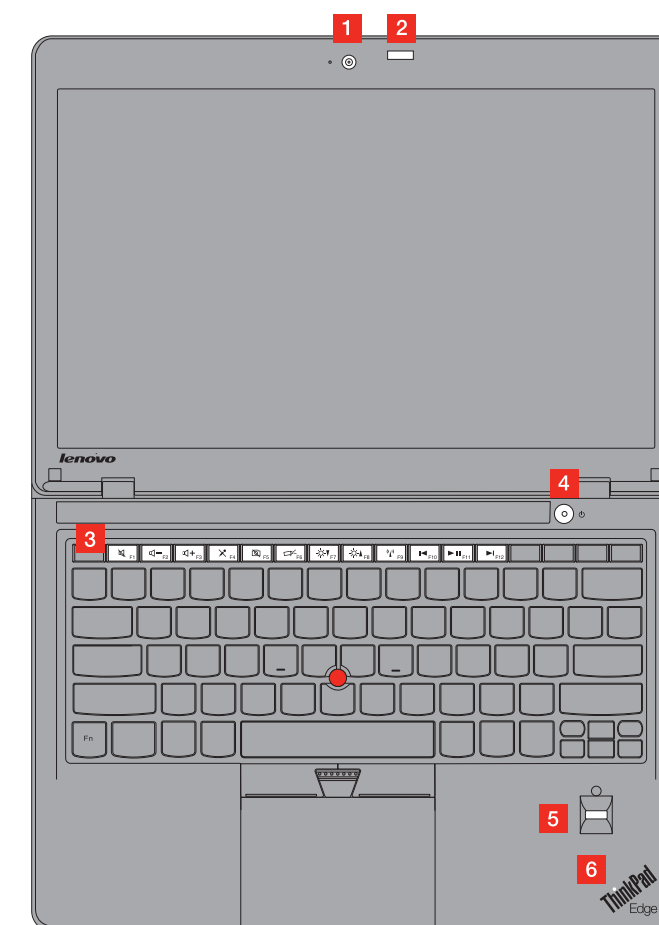


[Start here > ThinkPad Setup Instructions](#)

ThinkPad

ThinkVantage[®]Design

- 1 Integrated camera**
- 2 ThinkLight[®] keyboard light**
- 3 Function keys**
 - Volume controls
 - Microphone mute
 - Camera mute
 - Change display settings
 - Change display brightness
 - Manage wireless connections
 - Multimedia controls
- Note:** To use F1 - F12 functions, press Fn and the desired function key simultaneously.
- 4 Power button**
- 5 Fingerprint reader**
- 6 Power-status indicator**



ThinkPad Edge E420s Setup Poster

11/20/2010

Important tips

Be sure to follow the important tips given here to continue to get the most use and enjoyment out of your computer. Failure to do so might lead to discomfort or injury, or cause your computer to fail.

Protect yourself from the heat that your computer generates.

When your computer is turned on or the battery is charging, the base, the palm rest, and some other parts may become hot. The temperature they reach depends on the amount of system activity and the level of charge in the battery.

Extended contact with your body, even through clothing, could cause discomfort or even a skin burn.

- Avoid keeping your hands, your lap, or any other part of your body in contact with a hot section of the computer for any extended time.
- Periodically take breaks from using the keyboard by lifting your hands from the palm rest.

Protect yourself from the heat generated by the AC adapter.

When the AC adapter is connected to an electrical outlet and your computer, it generates heat.

Extended contact with your body, even through clothing, may cause a skin burn.

- Do not place the AC adapter in contact with any part of your body while it is in use.
- Never use it to warm your body.

Prevent your computer from getting wet.

To avoid spills and the danger of electrical shock, keep liquids away from your computer.

Protect the cables from being damaged.

Applying strong force to cables may damage or break them.

Route communication lines, or the cables of an AC adapter, a mouse, a keyboard, a printer, or any other electronic device, so that they cannot be walked on, tripped over, pinched by your computer or other objects, or in any way subjected to treatment that could interfere with the operation of your computer.

Protect your computer and data.

Before moving your computer, do one of the following, and make sure that the power-status indicator is off or is blinking slowly:

- Turn it off.
- Put it in sleep mode.
- Put it in hibernation mode.

This will help to prevent damage to the computer, and possible loss of data.

Handle your computer carefully.

- Do not drop, bump, scratch, twist, hit, vibrate, push, or place heavy objects on your computer, display, or external devices.
- Use a quality carrying case that provides adequate cushioning and protection.
- Do not pack your computer in a tightly packed suitcase or bag.
- Before putting your computer in a carrying case, make sure that it is off, in sleep mode, or in hibernation mode.

Finding information

To find detailed information about your computer, refer to the following manuals.

User Guide

The *User Guide* is a comprehensive online manual preinstalled on your computer. It provides answers to most of your questions about your computer, helps you to configure preloaded features and tools, or solve problems. To open the *User Guide*, do the following:

For the Windows® 7 operating system:

Click **Start**, and then click **Help and Support**. The Windows Help and Support window opens. Click **Lenovo User Guide**. In the Lenovo User Guide window, click the link for your model and the *User Guide* will open.

Safety and Warranty Guide

The *Safety and Warranty Guide* provides safety information, help and service information, and warranty information for your computer. To obtain a PDF version of the *Safety and Warranty Guide*, go to <http://www.lenovo.com/support>, click **User Guides & Manuals**, and then follow the instructions on the screen.

Regulatory Notice

The *Regulatory Notice* provides information about the radio frequency and safety standards. Be sure to read it before using wireless devices on your computer. To obtain a PDF version of the *Regulatory Notice*, go to <http://www.lenovo.com/support>, click **User Guides & Manuals**, and then follow the instructions on the screen.

Getting help and service

To ensure that you receive the best performance from your computer, browse the following Web page to find information such as aids for troubleshooting and answers to frequently asked questions:

<http://www.lenovo.com/support/faq>

If you still need help, refer to "Getting help and service" in the *Safety and Warranty Guide*. You can get help and information from the Customer Support Center by telephone. For current telephone numbers, go to: <http://www.lenovo.com/support/phone>

© Copyright Lenovo 2011.

Lenovo, ThinkPad, ThinkLight, and ThinkVantage are trademarks of Lenovo in the United States, other countries, or both. Windows is the trademark of the Microsoft group of companies. Other company, product, or service names may be trademarks or service marks of others.



Reduce | Reuse | Recycle

P/N: 0A60377
Printed in China

For Barcode Position Only

Free Manuals Download Website

<http://myh66.com>

<http://usermanuals.us>

<http://www.somanuals.com>

<http://www.4manuals.cc>

<http://www.manual-lib.com>

<http://www.404manual.com>

<http://www.luxmanual.com>

<http://aubethermostatmanual.com>

Golf course search by state

<http://golfingnear.com>

Email search by domain

<http://emailbydomain.com>

Auto manuals search

<http://auto.somanuals.com>

TV manuals search

<http://tv.somanuals.com>