

T61 Setup Poster

P/N 42W9589

3/2/2007

Size : 11x14 inches

Color : 2 color job = ■ Process Black (This plate must be printed in PMS Process Black C)

■ Process Magenta (This plate must be printed in PMS 032cvc)

Font : IBM Fonts and Helvetica Neue Family

Material : 100 gsm gloss art paper (Use 100% recycled paper in only Japan.)

Blue line shows die-cut. DO NOT PRINT.

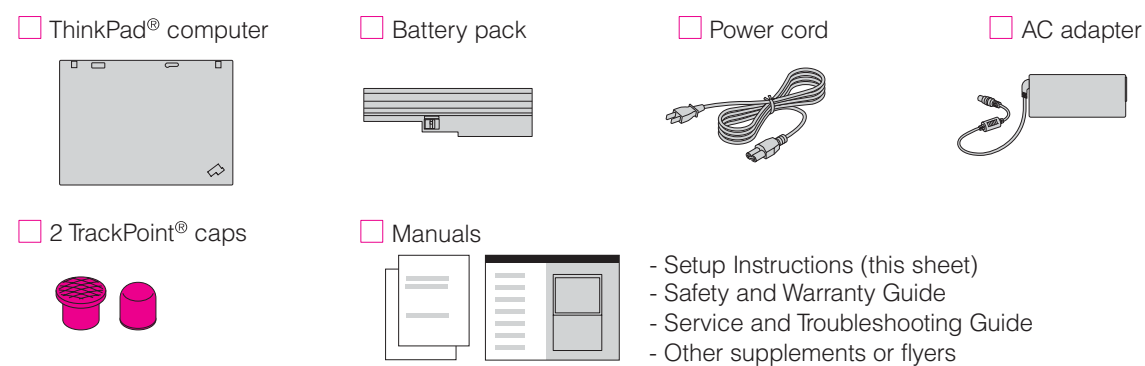
Please change the barcode No.

Please change the country name if the poster is printed in other than China.

ThinkPad®



Unpack



See reverse for notes about unlisted, missing, or damaged items and a recovery disc.

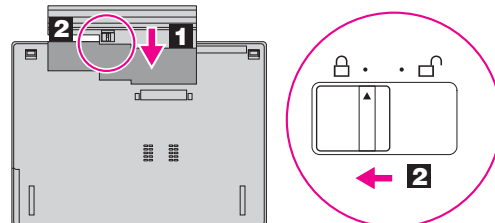
Initial Setup Instructions



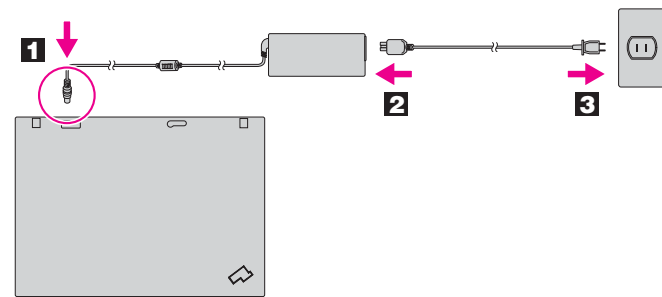
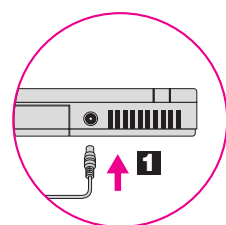
Read the safety notices and important tips in the included manuals before using your computer.

1 Install battery pack:

Your battery is ready to use.



2 Connect to power:



3 Turn on the power:



4 Point and click with UltraNav® Multi-pointing Navigation System:

Press the TrackPoint cap or move across the touch pad in the direction you want to move the pointer. The left and right buttons below the space bar and touch pad function like mouse buttons. Some models may have the TrackPoint only.

5 Configure the Operating System following on-screen instructions:

This process takes several minutes.

6 For more detailed information, press the ThinkVantage® button:



ThinkVantage® Design

1 UltraConnect™ wireless LAN antennas (main and auxiliary)

1a UltraConnect wireless LAN antenna (third)*

*Specific models only.

2 ThinkLight® keyboard light

3 One - handed latch

4 UltraConnect wireless WAN antenna*

*Specific models only.

5 Volume and mute buttons



6 Power button



7 ThinkVantage button



8 Web browser back and forward



9 Fingerprint reader*

*Specific models only.

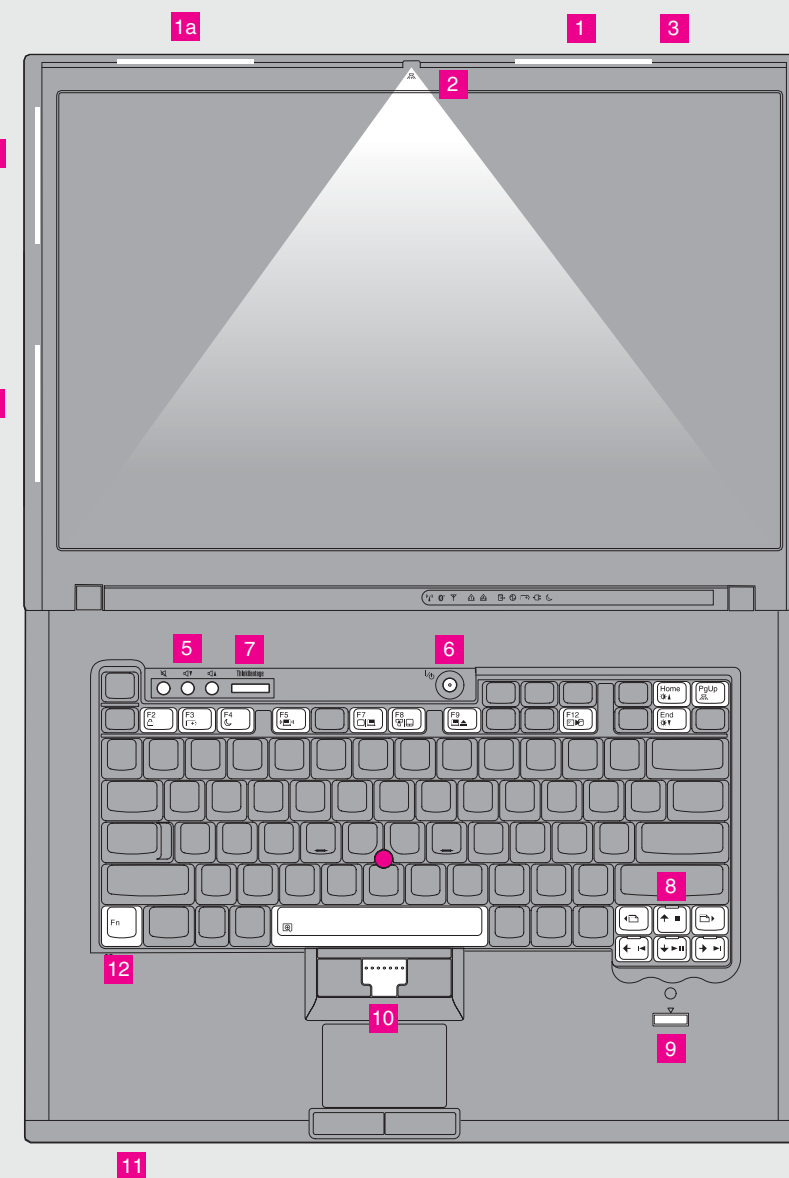
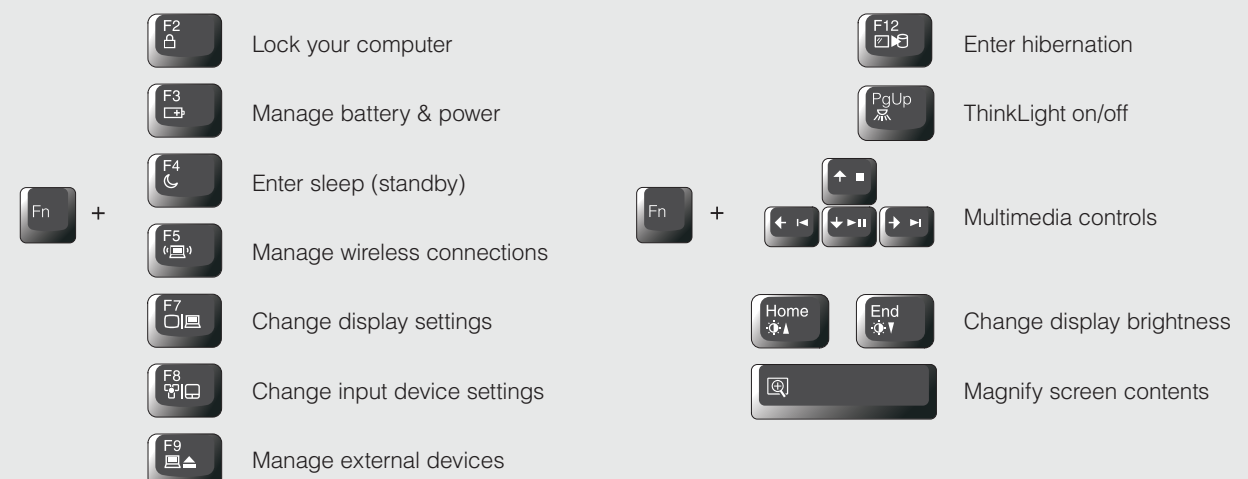
10 TrackPoint center button

11 Wireless radio switch



12 Fn key

Use in combination with other keys to access special ThinkPad features.



P/N: 42W9589

T61 Setup Poster

P/N 42W9589

3/2/2007

Size : 11x14 inches

Color : 2 color job = ■ Process Black (This plate must be printed in PMS Process Black C)

■ Process Magenta (This plate must be printed in PMS 032cvc)

Font : IBM Fonts and Helvetica Neue Family

Material : 100 gsm gloss art paper (Use 100% recycled paper in only Japan.)

Blue line shows die-cut. DO NOT PRINT.

Please change the barcode No.

Please change the country name if the poster is printed in other than China.

ThinkVantage Technologies

To learn more about ThinkVantage technologies and other items, open the ThinkVantage Productivity Center by pressing the ThinkVantage button.



Productivity Center

Productivity Center guides you to a host of information and tools to help you set up, understand, maintain, and enhance your ThinkPad computer.



Access Connections™

Access Connections allows you to seamlessly switch between wired and wireless environments while automatically managing security settings, printers, home page and other location-specific settings.



Client Security Solution (specific models only)

This unique hardware-software combination helps protect your data, including vital security information like passwords, encryption keys and electronic credentials, while helping to guard against unauthorized access to data.



Rescue and Recovery™

Rescue and Recovery includes a set of recovery tools to help you diagnose, get help and recover from system crashes quickly, even if the primary operating system will not boot and you are unable to contact your support team.



System Migration Assistant™

System Migration Assistant helps get you up and running by quickly and accurately migrating your data and settings to your new computer.



System Update

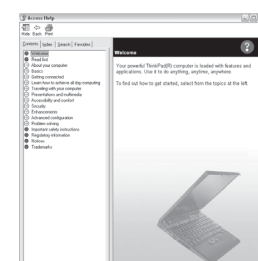
System Update downloads new Lenovo software, drivers and BIOS available for your ThinkPad computer.

To learn more, press the ThinkVantage button:



Using Access Help (online manual) and the included manuals

To find detailed information about your ThinkPad computer, open Access Help, or see the Safety and Warranty Guide or the Service and Troubleshooting Guide.



Access Help

Access Help is a comprehensive online manual that provides answers to most of your questions about your computer, helps you to configure preinstalled features and tools, or solve problems.

To open Access Help, do either of the following:

- Press the ThinkVantage button. Under Quick Links in the ThinkVantage Productivity Center, click "Access on-system help."
- Click Start, move the pointer to All Programs; then to ThinkVantage. Click Access Help.



Safety and Warranty Guide

- Important safety information
- Operating environment and other important notices
- Warranty information



Service and Troubleshooting Guide

- Introduction to other sources of information
- Important tips for taking care of your computer
- Diagnostics and troubleshooting
- Recovery options
- Help and service
- Warranty information for your computer

* Additional unpacking notes:

- 1) Some models may contain items that are not listed.
- 2) If any item is missing or damaged, please contact your place of purchase.
- 3) Everything for recovering factory-installed files and applications is on your hard disk eliminating the need for a recovery disc. For more information, see "Recovery options" in the Service and Troubleshooting Guide.

© Copyright Lenovo 2007.
All rights reserved.

The following terms are trademarks of Lenovo in the United States, other countries, or both:

Lenovo
Access Connections
ThinkPad
TrackPoint
ThinkVantage
ThinkLight
UltraConnect
UltraNav
Rescue and Recovery
System Migration Assistant

Printed in China

For Barcode Position Only

Free Manuals Download Website

<http://myh66.com>

<http://usermanuals.us>

<http://www.somanuals.com>

<http://www.4manuals.cc>

<http://www.manual-lib.com>

<http://www.404manual.com>

<http://www.luxmanual.com>

<http://aubethermostatmanual.com>

Golf course search by state

<http://golfingnear.com>

Email search by domain

<http://emailbydomain.com>

Auto manuals search

<http://auto.somanuals.com>

TV manuals search

<http://tv.somanuals.com>