



## LENNOX' ELITE® SERIES

Home Comfort Systems



### XP13

Reliable and responsible home comfort

Compatible with the exclusive Humiditrol® whole-home dehumidification system—indoor air quality you can feel



HOME COMFORT SYSTEMS  
*Innovation never felt so good.™*

# Elite® Series XP13 Heat Pump

Innovation never felt so good.™

Efficient design can result in significant energy savings

Dependable scroll compressor provides smooth, efficient and reliable operation

Ozone-responsible R410A meets the EPA's (Environmental Protection Agency) most stringent environmental guidelines

SmartHinge™ louvered access panels provide improved coil protection and fast, efficient servicing

Compatible with the exclusive Humiditrol® whole-home dehumidification system

ENERGY STAR® qualified

The XP13 heat pump proves that home comfort and environmental responsibility can go hand in hand. Engineered with the chlorine-free R410A refrigerant, the XP13 provides exceptional comfort and is environmentally responsible. This refrigerant meets the EPA's strictest standards for ozone and climate protection.

## THE IDEAL CHOICE FOR YOUR HOME ENVIRONMENT AND GLOBAL ENVIRONMENT

Designed to deliver more comfort for your energy dollar, the XP13 has efficiency ratings of up to 15.50 SEER and 8.50 HSPF. At the heart of the system is a scroll compressor, which provides smooth, efficient and reliable operation.

### EFFICIENCY RATING

Up to 15.50 SEER (Seasonal Energy Efficiency Ratio) and 8.50 HSPF (Heating Season Performance Factor).

### WARRANTY\*

10-year limited warranty on the compressor.

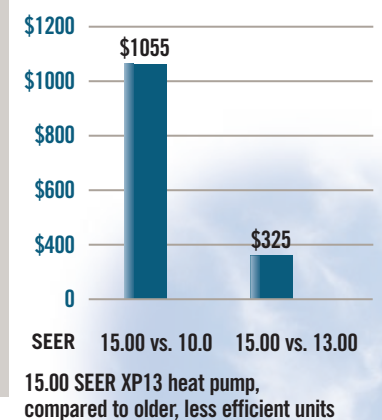
5-year limited warranty on all remaining covered components.

\*Applies to residential applications only. See actual warranty certificate for details.

## Efficient Compared to an older heat pump, the XP13 heat pump can save you hundreds of dollars each year

The XP13 heat pump provides cooling efficiencies of up to 15.50 SEER and heating efficiencies of up to 8.50 HSPF. The higher the efficiency rating, the higher your energy savings. In the case of the XP13 heat pump, those savings can translate to hundreds of dollars each year.

### 5-YEAR COOLING SAVINGS



This chart compares the 5-year savings you can expect from a 15 SEER heat pump vs. units with lower efficiency ratings. The regions used to calculate household fuel and utility costs reflect a cross-section of cities in the U.S. using 2006 Department of Energy national average energy rates. In addition to geography, cooling costs are based on 3-ton capacity specifications, with 1,600 cooling hours per year. Your actual costs will vary depending on the weather, local fuel rates, systems settings and your personal lifestyle.

## INNOVATIVE FEATURES FOR ENHANCED COMFORT AND EFFICIENCY

**Precision-Balanced Direct-Drive Fan –**  
Provides a quieter environment outside your home.

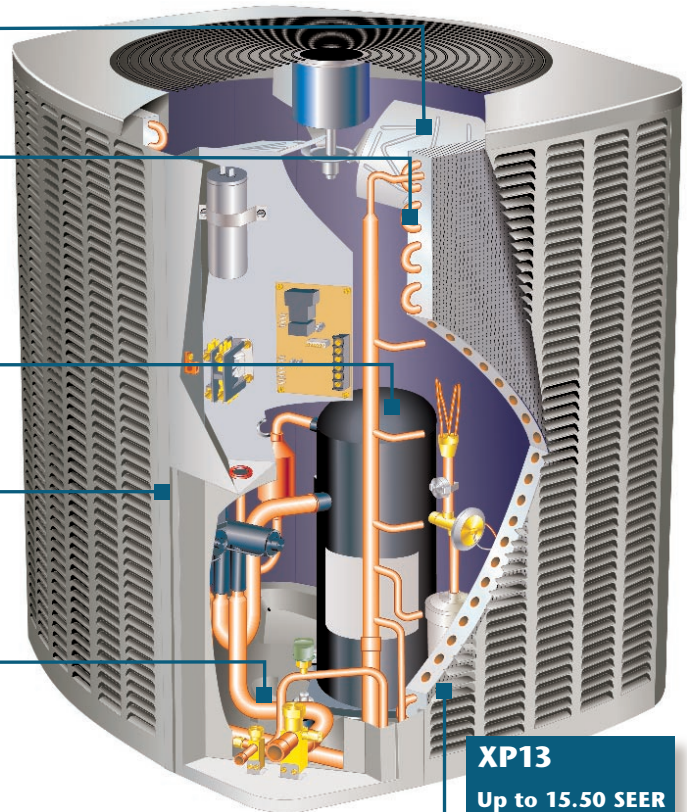
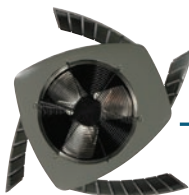
**High-Efficiency Outdoor Coil –**  
Provides exceptional heat transfer and low air resistance for high-efficiency operation that can lower your cooling bills.

**Dependable Scroll Compressor –**  
Provides smooth, efficient and reliable operation.

**Durable Steel Cabinet –**  
Made to last with an attractive, high-quality textured paint finish.

**Drainage Holes –**  
Prevent damaging moisture from collecting inside the basepan, ensuring longer product life.

**SmartHinge™ Louvered Coil Protection –**  
Allows quick, easy access to interior components from all sides, so the unit can be serviced in minimal time, saving you money.



**XP13**  
Up to 15.50 SEER  
Up to 8.50 HSPF

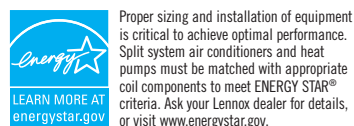
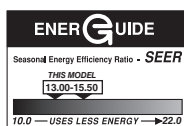


**Quality you can trust.**  
Constructed of heavy-gauge, pre-painted steel and tested in the most extreme environments to ensure maximum durability.

### Elite® Series XP13 Specifications

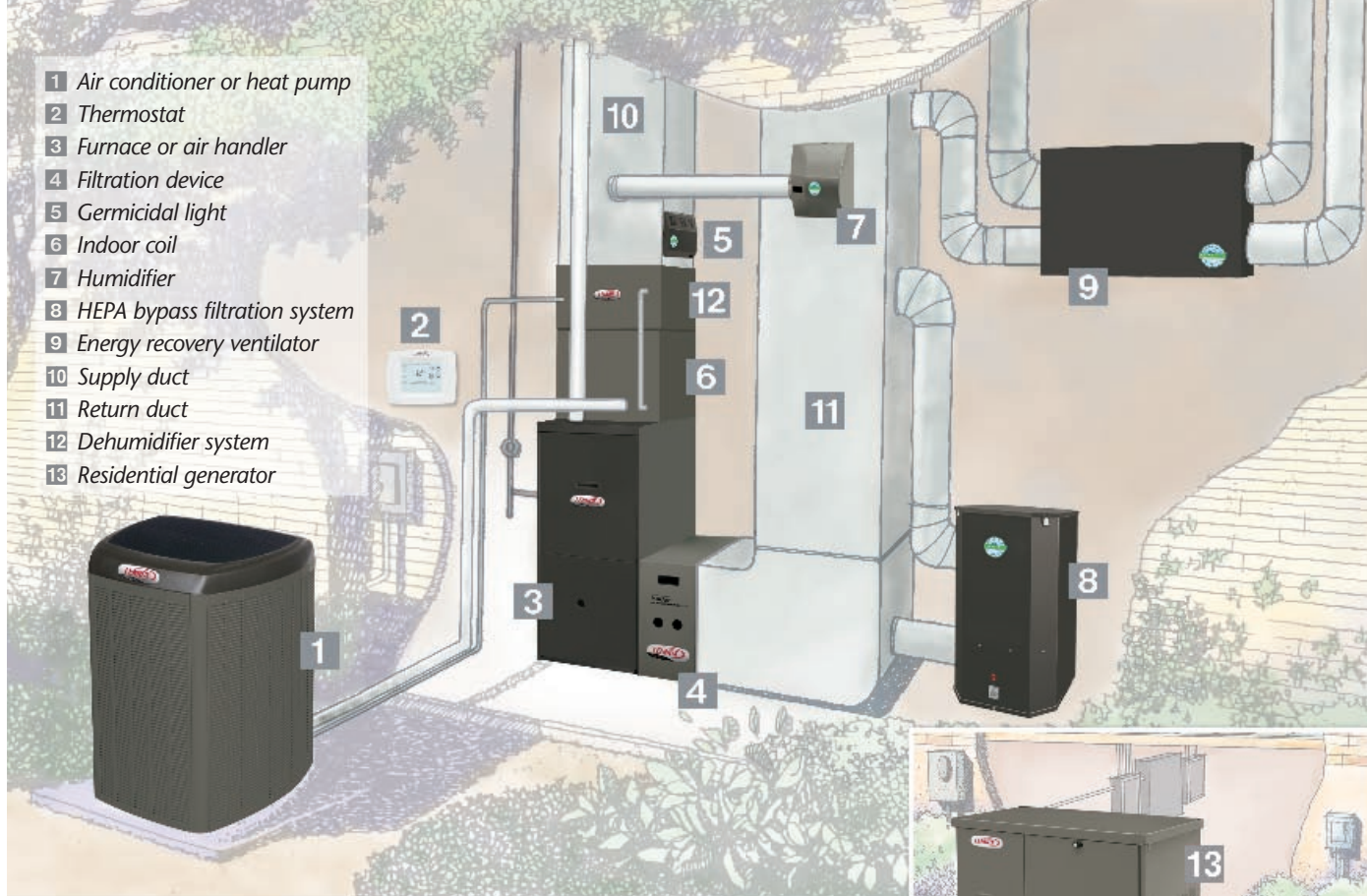
XP13	018	024	030	036	037	042	048	060
SEER	Up to 15.50	Up to 15.50	Up to 15.00	Up to 14.00	Up to 15.00	Up to 14.50	Up to 14.00	13.00
HSPF	Up to 7.70	Up to 8.50	Up to 8.00	Up to 8.50	Up to 8.50	Up to 8.20	Up to 8.20	Up to 7.70
Sound Rating – dB	74	74	76	76	76	76	76	76
Dimensions HxWxD (in.)	31 x 27 x 28	31 x 27 x 28	31 x 27 x 28	35 x 27 x 28	35 x 30-1/2 x 35	35 x 30-1/2 x 35	35 x 30-1/2 x 35	45 x 30-1/2 x 35
HxWxD (mm)	787 x 686 x 711	787 x 686 x 711	787 x 686 x 711	889 x 686 x 711	889 x 775 x 889	889 x 775 x 889	889 x 775 x 889	1143 x 775 x 889

**Note:** Due to Lennox' ongoing commitment to quality, all specifications, ratings and dimensions are subject to change without notice.



Lennox is proud of the fact that these products have earned the Good Housekeeping Seal.





- 1 Air conditioner or heat pump
- 2 Thermostat
- 3 Furnace or air handler
- 4 Filtration device
- 5 Germicidal light
- 6 Indoor coil
- 7 Humidifier
- 8 HEPA bypass filtration system
- 9 Energy recovery ventilator
- 10 Supply duct
- 11 Return duct
- 12 Dehumidifier system
- 13 Residential generator

## CUSTOMIZE YOUR COMFORT

Lennox® heating, cooling and indoor air quality products are designed to provide efficient, economical comfort—not only as individual units, but also together as an integrated system. This combined network of products delivers on every comfort count, from consistent temperatures and balanced humidity to improved indoor air quality. Lennox also offers a line of residential generators, which provide safe, reliable standby power in the event of outages.



## DEALERS YOU CAN COUNT ON

Choosing the right dealer for your home's heating, cooling and air quality needs is every bit as important as choosing the right brand. We think you'll agree our independent dealers are a big reason you can count on quality customer service whenever you call. Your Lennox dealer's dedication to quality shows in his knowledge, training and expertise in designing the right system for your home, installing it properly and keeping it running perfectly for many years to come.



HOME COMFORT SYSTEMS  
*Innovation never felt so good.™*

© Lennox Industries Inc. 2008

Visit us at [www.lennox.com](http://www.lennox.com), or contact us at 1-800-9-LENNOX.

## Free Manuals Download Website

<http://myh66.com>

<http://usermanuals.us>

<http://www.somanuals.com>

<http://www.4manuals.cc>

<http://www.manual-lib.com>

<http://www.404manual.com>

<http://www.luxmanual.com>

<http://aubethermostatmanual.com>

Golf course search by state

<http://golfingnear.com>

Email search by domain

<http://emailbydomain.com>

Auto manuals search

<http://auto.somanuals.com>

TV manuals search

<http://tv.somanuals.com>