

Quick-Start Guide

Leviton Entertainment and Applications Platform

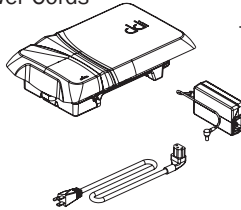
Follow this quick-start guide to install the Leviton Entertainment and Application Platform. This guide covers the mounting of the Digital Distribution Center (DDC) into a Leviton Structured Media Center (SMC), and configuring it for normal network operation, digital media management, and installation of the Digital Player (DP).

Brackets are available for mounting the DDC in an enclosure other than a Leviton SMC, a 19" rack or wall mounting. Please see your Distributor for information.

PACKAGE CONTENT

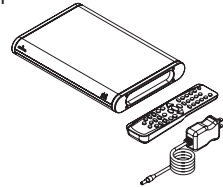
Digital Distribution Center, Includes:

- Power Supply & Power Cords
- Unit Cover



Digital Player, Includes:

- Remote Control
- Power Supply



PRE-INSTALLATION CHECKLIST

- Category 5e cabling system, home run to a common distribution point like a Leviton Series 420 Structured Media Center
- Leviton Structured Cabling Panel installed at the top of the SMC with at least (1) Category 5e Voice and Data Board
- Category 5e Patch Cords, up to eight (8)
- Personal computer with web browser installed and Ethernet networking capabilities (Windows 2000 or XP operating systems only)
- Digital Distribution Center
- Digital Player with Remote for each zone
- Broadband modem, with an ethernet port, and an operational broadband Internet connection

NOTE:

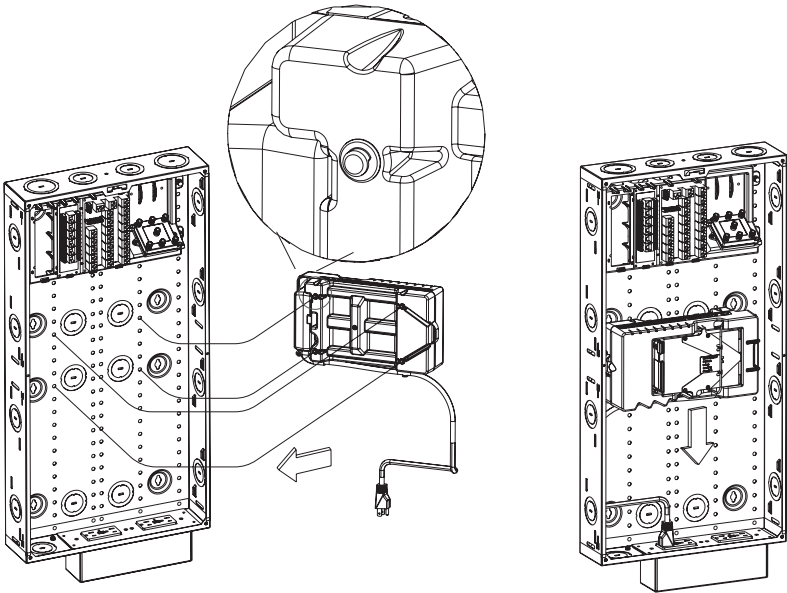
- **Power off all network hardware, including PCs, Digital Players, and Modem**
- **Composite RCA cable and Category 5e patch cord required for setup of DP (not included)**
- **The DDC must be the authoritative DNS Server (only router not the network).**

Technical Support: 800-824-3005
www.leviton-lin.com

DI-000-LEAPS-00A

Step One: Install

Position the DDC in the Structured Media Center. Align gun sites on the DDC with the grid holes on the back of the SMC enclosure. With the mounting pins in the grid holes pull the DDC downward into a secure position.



Step Two: Cable

Cable the WAN port on the DDC to the Ethernet port on your broadband modem using a Category 5e Patch Cord. If the modem is in the Structured Media Center, connect it directly to the WAN port of the DDC. (See Figure 1) If the modem is in a remote location, connect the DDC WAN port to the jack on the Category 5e Voice and Data Module that corresponds to the wallplate to which the modem is connected. (See Figure 2)

Figure 1

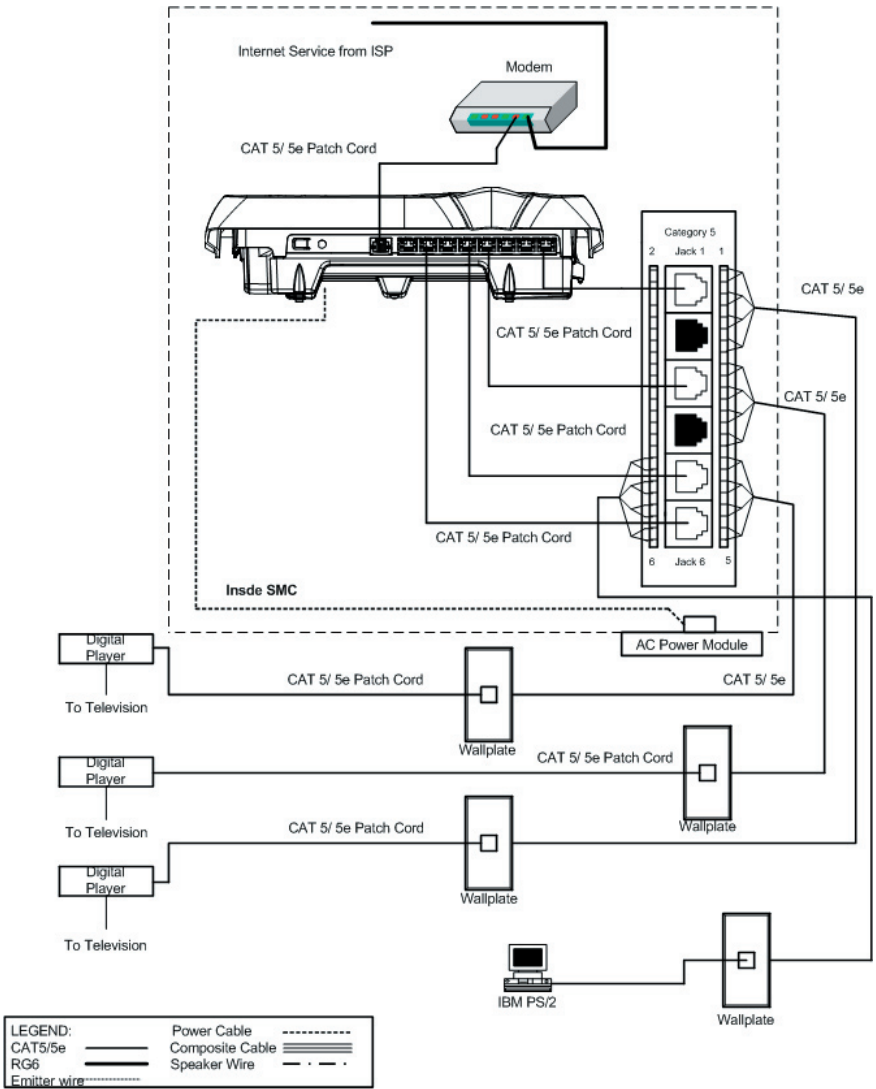
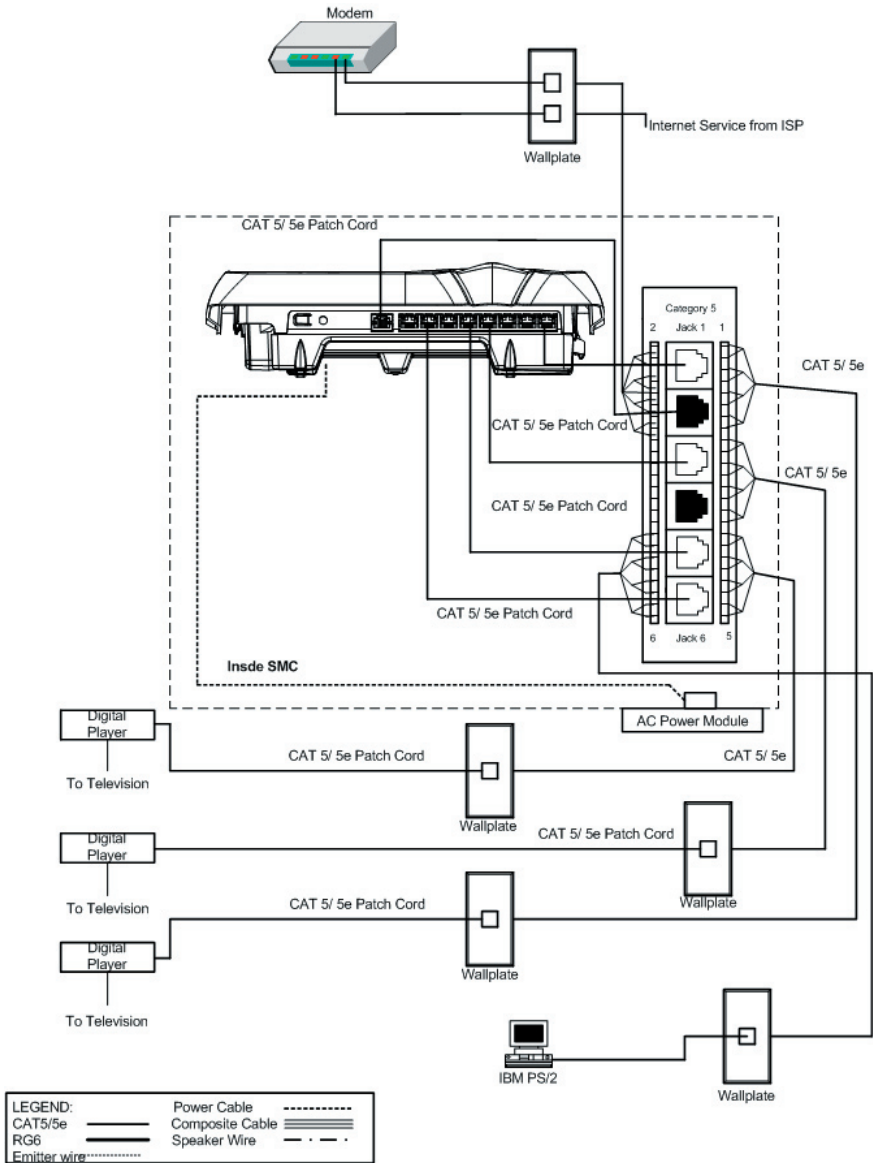
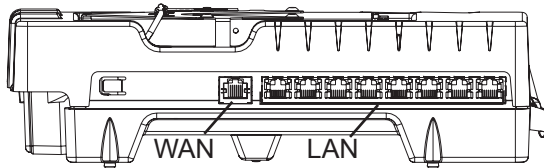


Figure 2



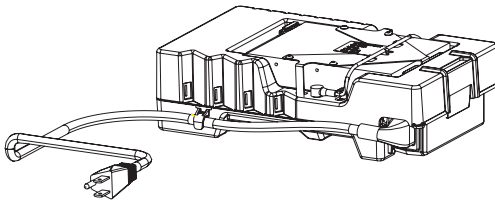


Using Category 5e Patch Cords, cable the LAN ports (labeled 1-8) on the DDC to the Category 5e Voice and Data Module ports that correspond to the wallplate connections where computers or Digital Players will be connected. Port assignments can be marked on the DDC label for reference.

NOTE: For networks needing more than 8 LAN ports, connect a Leviton 5 or 8 port switch to any of the eight DDC LAN ports.

Attach the power cord to the DDC and plug it into an AC outlet mounted in the bottom of the SMC, powering the DDC. A power cord hook is located at the bottom of the DDC to assist with cord management.

The DDC can also be powered using a Leviton Universal DC Power Supply Module using jumper included with the DDC.



Connect computers and Digital Players to the network with Category 5e Patch Cords and power up each device. The Digital Distribution Center auto-detects devices connected to the network by scanning its ports for connected devices. An LED will illuminate when the port is operational.

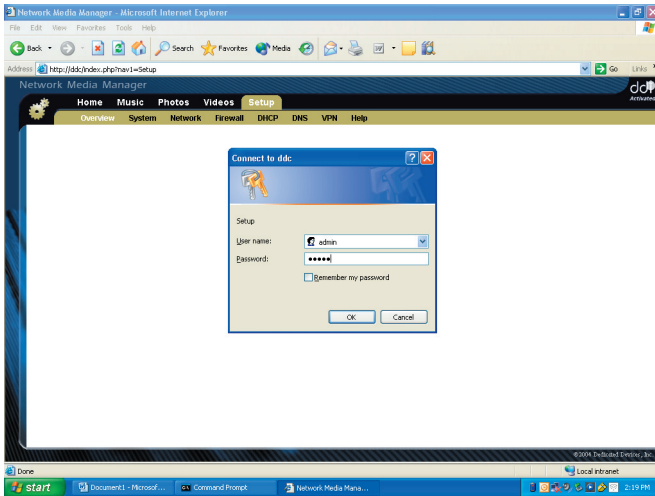
Remember to snap the cover on to the DDC.

STEP THREE: Configuring the DDC

From a computer connected to the network, open a web browser. Type **http://DDC** into the address field of the browser and press the Enter key. This will open the Network Media Manager application that resides on the DDC.

NOTE: The DDC must be the authoritative DNS Server (only router on the network).

To ensure the Internet connection is operational click on the SETUP tab in the Network Media Manager application. The log in dialog will open. User name is **admin** and the password is **admin** (all lower case). Your user name and password may be reset later via the SYSTEM tab.



- If your Internet Service Provider (ISP) uses Dynamic IP Addressing, no further configuration is required. See Section 3.1 for verification.
- If your ISP uses Static IP or PPPoE Addressing, follow the directions in sections 3.2 and 3.3 respectively.
- If uncertain, check the paperwork provided by your ISP or call your ISP's technical support department for further information.

3.1 Dynamic IP Addressing

From the Overview screen, in the Internet Connection (WAN) section the IP Address, Netmask & Gateway fields will be populated if your dynamic configuration is correct.



3.2 Static IP Addressing

From the Overview screen, click on Network at the top of the page. This will open the Network Configuration screen. Under Internet Connection (WAN) settings section from the drop down menu in the Mode line, select *Static IP Address*.

Enter the Internet IP Address, Netmask and Gateway fields with the information provided by the ISP. Click *Submit* at the bottom of the screen to save the settings.



3.3 PPPoE

From the Overview screen, click on Network at the top of the page. Under the Internet Connection (WAN) settings section, from the drop-down menu in the Mode line, select *Automatic Via PPPoE*.



Enter the PPPoE user name, PPPoE password and confirm the PPPoE password with the information provided by the ISP. The PPPoE service name may be entered (optional).

STEP FOUR: Configuring the DP

Default outputs of the DP are composite video and stereo audio (analog). If alternate outputs are required, use the following instructions to configure the outputs of the DP.

- NOTE:**
- **Command prompts are displayed at the bottom of the screen.**
 - **For Initial set up and configuration, connect the digital player to your display device using a composite RCA cable (not included).**
 - **Pressing the Power button on the remote will power off the DP. Use any button to turn on the DP.**

Display Settings

- 1) From Main Menu on a Digital Player connected to a monitor via the composite RCA connectors, press SETUP/EDIT on remote, which opens the Settings screen.
- 2) Use the DOWN ARROW to select DISPLAY and press the RIGHT ARROW to open the Display Setup screen.
- 3) Press SELECT on remote to select output and use the UP/DOWN ARROWS to select output type.
- 4) Press SELECT on remote to set output type then press LEFT ARROW, followed by SELECT to enter Test Mode. Picture should be present on monitor connected to selected output.
- 5) Press SELECT again to exit Test Mode and set selected Display Mode as default.

*** While in the Display screen, you can change Brightness, Contrast, Saturation and DP Screen Saver Settings.**

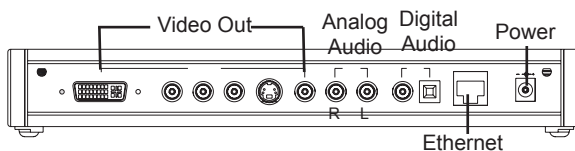
**** Pressing SETUP on the remote while in the Music/Photos/Videos screens will open the Edit Menu for that particular media. See Owner's Manual for more information.**

Sound Settings

NOTE: When audio output is set to 5.1 (S/PDIF/Coax Only), audio will pass through the analog connections when music tracks are played. During movie playback, if the content is Dolby Digital 5.1, the signal will pass through the digital connections only and no audio will pass through the analog connections. If the movie is not Dolby Digital 5.1, the audio will pass through both the digital and analog connections.

- 1) From Main Menu on a Digital Player connected to a monitor via the composite RCA connectors, press SETUP/EDIT on remote, which opens the Settings screen.
- 2) Press the DOWN ARROW to select Sound and press RIGHT ARROW to open Sound Setup screen.
- 3) Press SELECT on remote to select Volume and use UP/DOWN ARROWS to set volume level. Press SELECT on remote to confirm.

- 4) Use DOWN ARROW to select AC3 Audio. Press SELECT on remote and use UP/DOWN ARROWS to select 5.1 (S/PDIF/Coax Only).
- 5) Press SELECT then LEFT ARROW.
- 6) **For the settings to take effect, press the POWER button on the remote to cycle power to the DP.**



STEP FIVE: Harvesting Media

There are two ways to configure media on the DDC - one using the Media Manager, the other is a manual transfer of media.

Media Manager

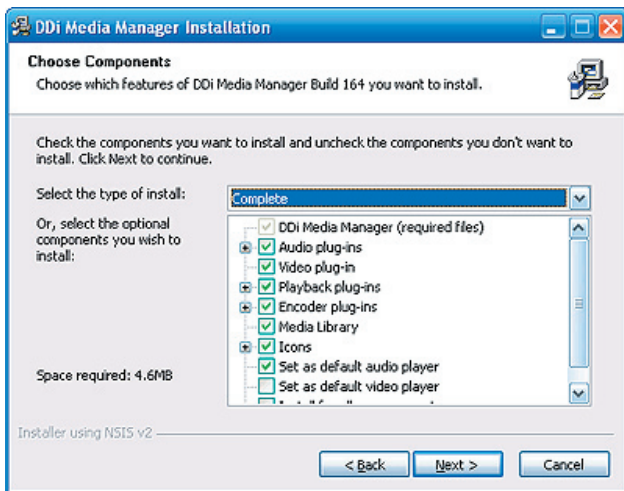
This PC-based software application is shipped on the DDC and can be downloaded and installed on up to 10 computers in the home. **You must have Windows 2000 or XP installed on the PC to allow this process to work correctly.**

Begin by collecting the digital music, photos and video from computers with the Media Manager, powered by Gracenote. On-screen menus guide the process of identifying digital content on the computer and copying the content to a centralized media library on the DDC. During the media collection process, music files are analyzed by Gracenote CDDB® Music Recognition Service to ensure album, artist and track information are accurately named. To ensure the best user experience, some music files will be renamed as they are placed in to the media library; the original music files on the computer will remain unchanged.

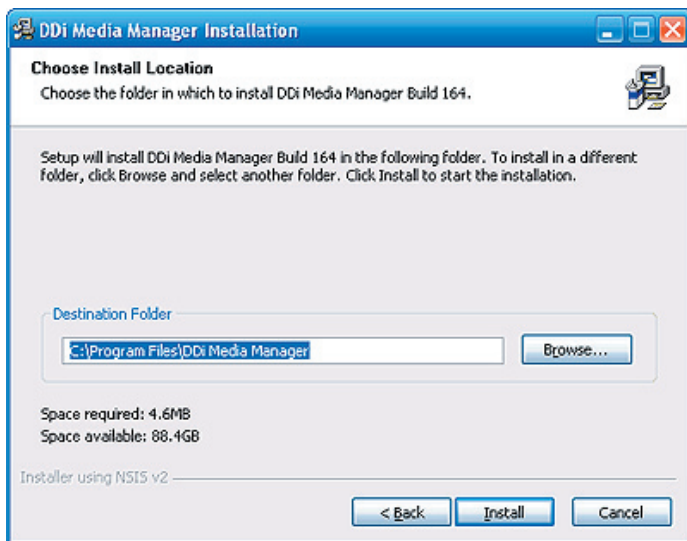
The setup of Media Manager on a PC is a one time event. Settings defined during this process can be modified later from the Preference menu within the application. Follow these steps to install Media Manager on up to ten computers:

- 1) Open a web browser. Type **http://DDC** into the address field of the browser to connect to the Network Media Manager on the DDC.
- 2) Click SUPPORT tab. Next to DDI Media Manager, click *Download*. A Windows dialog box will appear. Click the *Run* button and follow the on-screen prompts to install the application.
- 3) *Agree* to the Licensing Agreement to continue.

4) The Choose Components window will open. Select the optional components you wish to install. Click Next.

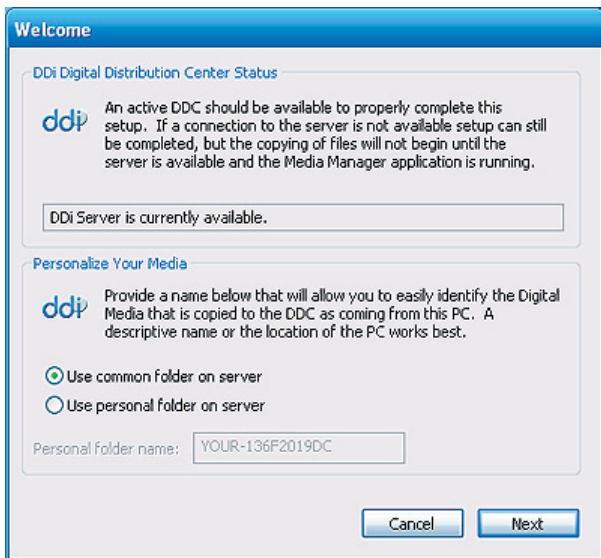


5) The Choose Install Location window will open. Use default destination or browse to a specific folder to install the DDi Media Manager. Click *Install*. Click *Next* in the Welcome window.

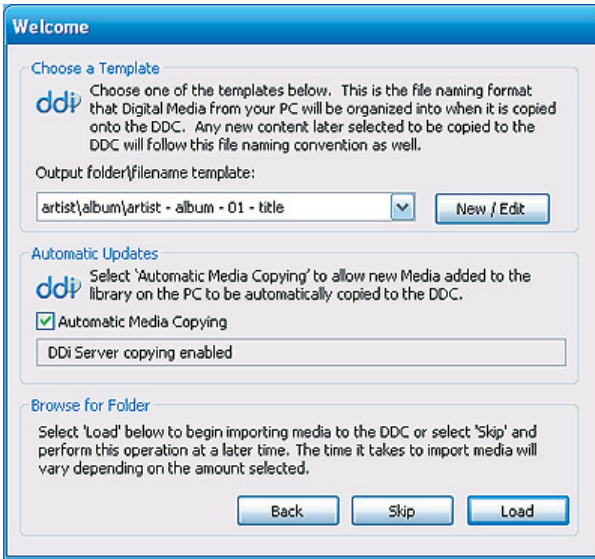




- 6) The DDC Status window opens indicating whether the DDI server is currently available and allows selection of a common or personal destination folder on the DDC. Click Next.



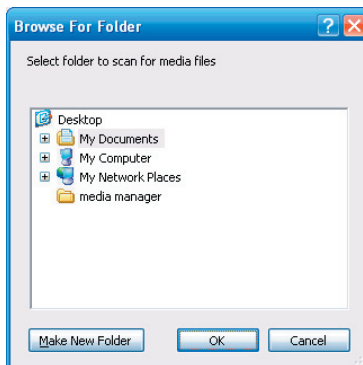
7) The Choose A Template window opens allowing file format to be selected for music files as they appear in the DDI Media Manager. Automatic Media Copying is selected by default. To begin importing media, click *Load* which opens a Browse For Folder window.



8) Choose a desired source folder within the Browse For Folder window. Click *Ok*.

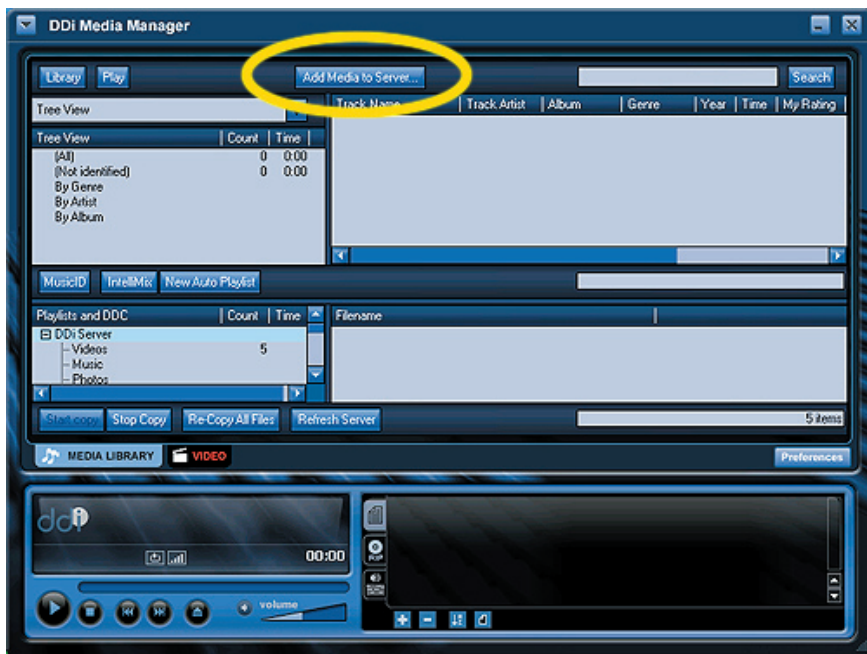
NOTE:

- Music will be harvested from all directories in the search path
- Pictures will ONLY be harvested from (current user) /My Documents/My Photos
- Videos will ONLY be harvested from (current user) /My Documents/My Videos



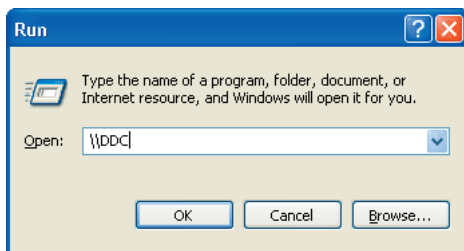
9) The DDI Media Manager program opens.

Note: Additional media can be added to the DDC by clicking *Add Media to Server*.



Digital Media can also be transferred manually:

1. Select Start
2. Run
3. Type **\\DDC** and press enter



A window will open with folders: Music/Photos/Videos. Drag and drop your media into the appropriate folder.

Note: This process does not use the Gracenote software and may not ensure album, artist and track information are accurately named.

Free Manuals Download Website

<http://myh66.com>

<http://usermanuals.us>

<http://www.somanuals.com>

<http://www.4manuals.cc>

<http://www.manual-lib.com>

<http://www.404manual.com>

<http://www.luxmanual.com>

<http://aubethermostatmanual.com>

Golf course search by state

<http://golfingnear.com>

Email search by domain

<http://emailbydomain.com>

Auto manuals search

<http://auto.somanuals.com>

TV manuals search

<http://tv.somanuals.com>