



LG Electronics, HVAC Division
920 Sylvan Ave., Englewood Cliffs, NJ 07632
800-243-0000 www.lgusa.com

PG-100-2006-VER3



ELEGANT. EFFICIENT. EXTRAORDINARY.

PRODUCT GUIDE

Duct-Free Air Conditioning Systems
Art Cool • Mini-Split • Flex Multi Split
Floor Standing • Ceiling Cassette
Through-The-Wall • PTAC • PTHP



MINI-SPLIT ART COOL, SINGLE ZONE



9,000 and 12,000 BTUs
Cooling and Heat Pump



12,000 BTUs
Cooling and Heat Pump



18,000 BTUs
Cooling

MINI-SPLIT STANDARD, SINGLE ZONE



9,000-24,000 BTUs
Cooling and Heat Pump



30,000 BTUs
Cooling and Heat Pump

FLEX MULTI SPLIT, DUAL & TRI-ZONE



Dual Zone: Mix and match for 18,000 to 24,000 BTUs
Tri-Zone: Mix and match for 27,000 to 36,000 BTUs
Cooling and Heat Pump



FLOOR STANDING & CEILING CASSETTE, SINGLE ZONE



28,000 BTUs
Cooling



48,000 BTUs
Cooling



24,000 and 34,000 BTUs
Cooling

THROUGH-THE-WALL



8,000-14,000 BTUs
Cooling
10,000-12,000 BTUs
Heat/Cool

PACKAGED TERMINAL AIR CONDITIONERS



7,000-15,000 BTUs
Heat/Cool
7,000-15,000 BTUs
Heat Pump

POINT-OF-SALE DISPLAY



Art Cool Display Rack
Item # ASRK



The LG HVAC Advantage

Take advantage of our smart solutions for residential & commercial air conditioning applications.

LG HVAC systems offer a range of solutions that are cost-efficient, quiet, and attractive. They provide a smart alternative to both central HVAC and window-mounted air conditioners, and are available in a variety of configurations to suit different cooling and heating situations.

Split Systems

These innovative systems are “split” into indoor and outdoor units. The interior units are available in several different configurations: Art Cool, standard wall-mounted, floor standing and ceiling cassettes. All interior units have remote controls for easy use. Installation by a qualified HVAC contractor is safe and easy—no duct work or sheet metal is needed. Single, dual and tri-zone systems, as well as cooling only and heat pump models are available.

Through-The-Wall Models

LG's Through-The-Wall models offer versatile, energy efficient solutions for residential and light commercial applications. Both cooling and heat/cool models are available in a variety of capacities, with most models ENERGY STAR® qualified. The standard size chassis fits into any competitive sleeve, making upgrades a breeze.

PTAC Models

LG's new PTAC units are perfect for lodging and healthcare applications. These units have an extremely low decibel level and outstanding sound prevention rating. Plus, LG models have efficiency ratings up to 12.7 EER, which translates into excellent energy savings.

Feature Advantages:

Look for these key features throughout the LG line.

- **Attractive, customizable indoor units.** Art Cool provides numerous options to compliment any décor. The Art Cool Customizable Art Panel works like a picture frame – any art or photograph can be displayed. Other Art Cool units come in a variety of beautiful colors and finishes to suit any room.



- **Multi Power System™** Energy-saving twin compressors: one provides power at 60% capacity until the system reaches a desired temperature. Then the smaller compressor takes over to provide sustained operation at 40% capacity.



- **R-410A Refrigerant.** Environmentally friendly refrigerant utilized in the majority of LG systems.

NOTE: R-410A service port access will require a special adapter to attach standard 1/4" hoses. Ask your equipment supplier for more details.

- **Patented Plasma Air Purifying System.** The 4-stage system features a large, permanent filter and an electronic air purifier that captures microscopic contaminants like dust, mite, pollen, and pet fur.
- **Triple-Filter Air Purifying System.** An electrostatic filter removes dust, pollen and smoke; an anti-fungal filter prevents bacteria and mold from forming; and a deodorizing filter freshens the air.
- **Art Cool Self-Cleaning Indoor Coil.** Drives dirt and moisture from coil surface leaving it clean and fresh smelling.
- **Dehumidifying Mode.** Indoor unit accurately senses room temperature and controls humidity by shutting down the compressor before a room is over-cooled.
- **Chaos Swing.** Electronically controlled louvers and fan speeds create a more natural, random flow of air, reducing temperature stratification.
- **Art Cool Three-way Cooling.** Air flows out of the unit from three directions, creating more natural circulation.
- **Jet Cool.** Operates at high speed for up to 30 minutes to quickly cool a room down to 65° F.
- **Swirl Wind.** Four-way controlled louvers and fan speeds create a stronger, wider air flow and reduce temperature stratification.
- **Auto Operation.** Provides three levels of comfort from which to choose. Temperature and fan speed will set automatically.
- **Manual Power Switch.** Easily accessed button that allows for continued operation if the remote control is misplaced.
- **Defrost Control.** Shuts down the indoor fan to prevent cold air from being blown into the house. Removes frost from outdoor coil when the outdoor temperature is low (Heat Pump only).
- **Temperature Display.** Shows room temperature of interior unit.
- **Auto Sleep Mode.** Automatically increases the temperature setting 2° F twice (after 1/2 hour and one hour). The interior unit shuts off when the timer setting is reached.
- **Auto Restart.** Automatically restarts a unit to programmed setting when the electricity comes on after a power failure.

NOTE: All features are not available on all models. See product pages for details.



ART COOL™

ART COOL MINI-SPLIT SINGLE ZONE

Customized good looks

The slim, contemporary styling of the Art Cool models will appeal to today's discerning customer. The 9,000 and 12,000 BTU picture models come with a frame that allows the customer to modify and personalize the unit with their own artwork or photography – the ultimate in custom design. Other Art Cool indoor units are available in popular finishes and colors to compliment any décor.

Art Cool Duct-Free Mini-Split Air conditioning Systems from LG maximize the efficiency and economics of duct-free technology. Now you can bring more attractive, cost effective solutions to your commercial and residential customers, providing single zone systems in both air conditioning and heat pump models.



Available styles and finishes



Mini-Split
Art Cool Indoor Unit
Customizable Art Panel



Mini-Split
Art Cool Indoor Unit
Mirror Finish



Standard Mirror



Silver



Blue



Mini-Split
Art Cool Indoor Unit
Metal Finish



Standard
Metal



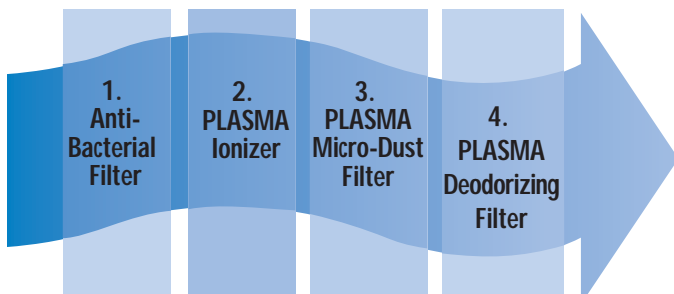
Blue



Wood



White Wood



Outstanding air purification

The wall unit features LG's PLASMA Air Purifying System that provides excellent indoor air quality. Freshen the air anytime, whether cooling a room or operating in fan only mode.

9,000 BTUs

LA091CNP (A/C Model)

C 9,000 BTUs **Cooling**

LA091HNP (H/P Model)

C 9,000 BTUs **Cooling**

H 9,000 BTUs **Heating**



Features:

- Customizable art panel
- R-410A Refrigerant
- Plasma Air Purifying System
- Self-cleaning indoor coil
- Dehumidifying mode
- Chaos Swing
- Three-way cooling

- Jet Cool
- Cooling mode
- Heating mode (H/P model only)
- Fan mode
- Auto operation
- Manual power switch
- Defrost control (H/P model only)
- Auto sleep mode

- Auto restart
 - 24-Hour on/off timer
 - Evaporator frost control
- Interior Unit Includes:**
- Wall unit
 - Installation plate & hardware
 - Remote control, batteries, holder & holder hardware

- Installation manual
- Exterior Unit Includes:**
- Exterior unit
 - Exterior unit has sufficient refrigerant for charging indoor coil and a 25' line set

System Model #	LA091CNP	LA091HNP
Indoor Model #	LAN091CNP	LAN091HNP
Outdoor Model #	LAU091CNP	LAU091HNP
Performance		
Capacity (BTUs)	C 9,000	C 9,000 H 9,000
SEER	13	13
Air Circulation (CFM H/M/L)	283/230/177	283/230/177
Fan Speeds	4/Auto/Chaos	4/Auto/Chaos
Dehumidification (pts/hour)	2.6	2.6
Indoor dB(A)*	35/30/25	35/30/25
Outdoor dB(A)*	48	48
Electrical		
Rated Voltage Outdoor	115-60-1	115-60-1
Rated Voltage Indoor	36V DC	36V DC
Indoor Dimensions		
W x H x D (inches)	23 5/8 x 5 3/4	23 5/8 x 5 3/4
Weight (lbs.)	30.9	30.9
Outdoor Dimensions		
W x H x D (inches)	30 5/16 x 21 5/16 x 9 5/8	30 5/16 x 21 5/16 x 9 5/8
Weight (lbs.)	66.1	66.1
Thermostat Range		
Cooling / Heating (°F)	64-86	64-86/60-86

*LG verified sound ratings

12,000 BTUs



LA121CNP(A/C Model)

C 12,000 BTUs **Cooling**

LA121HNP (H/P Model)

C 12,000 BTUs **Cooling**

H 12,000 BTUs **Heating**

Features:

- Customizable art panel
- R-410A Refrigerant
- Plasma Air Purifying System
- Self-cleaning indoor coil
- Dehumidifying mode
- Chaos Swing
- Three-way cooling

- Jet Cool
- Cooling mode
- Heating mode (H/P model only)
- Fan mode
- Auto operation
- Manual power switch
- Defrost control (H/P model only)
- Auto sleep mode

- Auto restart
 - 24-Hour on/off timer
 - Evaporator frost control
- Interior Unit Includes:**
- Wall unit
 - Installation plate & hardware
 - Remote control, batteries, holder & holder hardware

- Installation manual
- Exterior Unit Includes:**
- Exterior unit
 - Exterior unit has sufficient refrigerant for charging indoor coil and a 25' line set

System Model #	LA121CNP	LA121HNP
Indoor Model #	LAN121CNP	LAN121HNP
Outdoor Model #	LAU121CNP	LAU121HNP
Performance		
Capacity (BTUs)	C 12,000	C 12,000 H 12,000
SEER	13	13
Air Circulation (CFM H/M/L)	330/261/194	330/261/194
Fan Speeds	4/Auto/Chaos	4/Auto/Chaos
Dehumidification (pts/hour)	3.0	3.0
Indoor dB(A)*	41/35/29	41/35/29
Outdoor dB(A)*	48	48
Electrical		
Rated Voltage Outdoor	115-60-1	115-60-1
Rated Voltage Indoor	36V DC	36V DC
Indoor Dimensions		
W x H x D (inches)	23 5/8 x 5 3/4	23 5/8 x 5 3/4
Weight (lbs.)	30.9	30.9
Outdoor Dimensions		
W x H x D (inches)	30 5/16 x 21 5/16 x 9 5/8	30 5/16 x 21 5/16 x 9 5/8
Weight (lbs.)	70.5	70.5
Thermostat Range		
Cooling / Heating (°F)	64-86	64-86/60-86

*LG verified sound ratings



Warranty: 3 years parts; 5 years compressor. See page 9 for electrical specifications, refrigerant line requirements & formulas. See page 17 for installation materials.

12,000 BTUs

LA121CNM (A/C Model)

C 11,500 BTUs **Cooling**

LA121HNM (H/P Model)

C 11,500 BTUs **Cooling**

H 11,500 BTUs **Heating**



Features:

- Changeable front panel color option
- R-410A Refrigerant
- Plasma Air Purifying System
- Self cleaning indoor coil
- Dehumidifying mode
- Chaos Swing

- Jet Cool
- Cooling mode
- Heating mode (H/P model only)
- Fan mode
- Auto operation
- Manual power switch
- Defrost control (H/P model only)
- Auto sleep mode

- Auto restart
 - 24-Hour on/off timer
 - Evaporator frost control
 - Ultra-quiet operation
- Interior Unit Includes:**
- Wall unit
 - Installation plate & hardware

- Remote control, batteries, holder & holder hardware
 - Installation manual
- Exterior Unit Includes:**
- Exterior unit
 - Exterior unit has sufficient refrigerant for charging indoor coil and a 25' line set

System Model #	LA121CNM	LA121HNM
Indoor Model #	LAN121CNM	LAN121HNM
Outdoor Model #	LAU121CNM	LAU121HNM

Performance

Capacity (BTUs)	C 11,500	C 11,500 H 11,500
SEER	13	13
Air Circulation (CFM H/M/L)	330/261/194	330/261/194
Fan Speeds	4/Auto/Chaos	4/Auto/Chaos
Dehumidification (pts/hour)	3.0	3.0
Indoor dB(A)*	41/38/34	41/38/34
Outdoor dB(A)*	48	48

Electrical

Rated Voltage Outdoor	115-60-1	115-60-1
Rated Voltage Indoor	36V DC	36V DC

Indoor Dimensions

W x H x D (inches)	36 x 11 3/32 x 6 1/2	36 x 11 3/32 x 6 1/2
--------------------	----------------------	----------------------

Weight (lbs.)	20.5	20.5
---------------	------	------

Outdoor Dimensions

W x H x D (inches)	30 5/16 x 21 5/16 x 9 5/8	30 5/16 x 21 5/16 x 9 5/8
--------------------	---------------------------	---------------------------

Weight (lbs.)	70.5	70.5
---------------	------	------

Thermostat Range

Cooling / Heating (°F)	64-86	64-86/60-86
------------------------	-------	-------------

*LG verified sound ratings

18,000 BTUs

LA181CNW (A/C Model)

● 18,000 BTUs **Cooling**



Features:

- Changeable front panel color option
- Multi Power System™
- R-410A Refrigerant
- Plasma Air Purifying System
- Self cleaning indoor coil
- Dehumidifying mode

- Chaos Swing
- Three-way cooling
- Jet Cool
- Cooling mode
- Fan mode
- Auto operation
- Manual power switch
- Temp. display on indoor unit

- Auto sleep mode
 - Auto restart
 - 24-Hour on/off timer
 - Evaporator frost control
- Interior Unit Includes:**
- Wall unit
 - Installation plate & hardware

- Remote control, batteries, holder & holder hardware
- Installation manual

Exterior Unit Includes:

- Exterior unit
- Exterior unit has sufficient refrigerant for charging indoor coil and a 25' line set

System Model #	LA181CNW
Indoor Model #	LAN181CNW
Outdoor Model #	LAU181CNW
Performance	
Capacity (BTUs)	● 18,000/17,800
SEER	13
Air Circulation (CFM H/M/L)	460/353/247
Fan Speeds	4/Auto/Chaos
Dehumidification (pts/hour)	5.3
Indoor dB(A)*	44/40/36
Outdoor dB(A)*	55
Electrical	
Rated Voltage Outdoor	230/208-60-1
Rated Voltage Indoor	36V DC
Indoor Dimensions	
W x H x D (inches)	36 1/2 x 20 19/32 x 5 25/32
Weight (lbs.)	37.5
Outdoor Dimensions	
W x H x D (inches)	34 5/16 x 25 13/16 x 12 5/8
Weight (lbs.)	149.9
Thermostat Range	
Cooling / Heating (°F)	64-86

*LG verified sound ratings



Warranty: 3 years parts; 5 years compressor. See page 9 for electrical specifications, refrigerant line requirements & formulas. See page 17 for installation materials.

ART COOL MINI-SPLIT SINGLE ZONE

ELECTRICAL & REFRIGERATION • QUICK REFERENCE

Electrical Specifications									
Art Cool	Type	Model	BTUs	Voltage		Rated Amps	MCA*	MOP**	
				Indoor	Outdoor				
Single Zone	A/C		LA091CNP	9,000	36V DC	115	7.2	15	15
	A/C		LA121CNP	12,000	36V DC	115	9.3	15	20
	A/C		LA121CNM	11,500	36V DC	115	10.5	15	20
	A/C		LA181CNW	18,000	36V DC	230/208	9.8	15	20
	H/P		LA091HNP	9,000	36V DC	115	7.2	15	20
	H/P		LA121HNP	12,000	36V DC	115	9.3	15	20
	H/P		LA121HNM	11,500	36V DC	115	10.5	15	20

All equipment single phase.

*Minimum Circuit Ampacity

**Maximum Overcurrent Protection

NOTE: Please see local electrical codes for proper wire specifications.

Wire Size	
Minimum AWG	14-3
Indoor/Outdoor Connecting Cable Minimum AWG	18-4

Refrigerant Line Specifications***									
Art Cool	Type	Model	BTUs	Pipe Size		Additional Refrigerant	Max. Pipe Length	Max. Elevation	
				Liquid	Suction				
Single Zone	A/C		LA091CNP	9,000	1/4"	1/2"	0.21 oz./ft.	50'	25'
	A/C		LA121CNP	12,000	1/4"	1/2"	0.21 oz./ft.	50'	25'
	A/C		LA121CNM	11,500	1/4"	1/2"	0.21 oz./ft.	50'	25'
	A/C		LA181CNW	18,000	1/4"	1/2"	0.21 oz./ft.	100'	50'
	H/P		LA091HNP	9,000	1/4"	1/2"	0.21 oz./ft.	50'	25'
	H/P		LA121HNP	12,000	1/4"	1/2"	0.21 oz./ft.	50'	25'
	H/P		LA121HNM	11,500	1/4"	1/2"	0.21 oz./ft.	50'	25'

***Each system is pre-charged with enough refrigerant to charge 25 ft. of line and the interior unit.

NOTE: Systems having the outdoor unit mounted above the indoor unit (e.g. basement installations) have the following additional requirement:

For systems with maximum elevation of 25 ft. (see chart above and Figure A), refrigerant lines must be oil trapped between 8 ft. and 16.4 ft. of elevation.

For systems with elevation of greater than 25 ft. (see chart above), refrigerant lines must be oil trapped at least every 16.4 ft. of elevation.

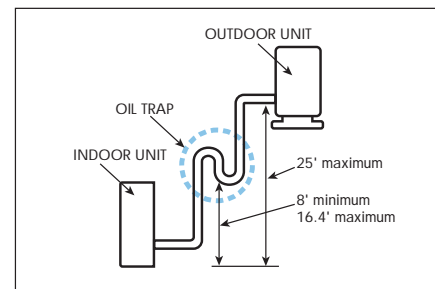


Figure A.
Example: 25 ft. maximum elevation.

MINI-SPLIT STANDARD AIR CONDITIONERS SINGLE ZONE

Mini-Split Standard systems utilize the same duct-free technology as Art Cool units, in a streamlined, low profile design. Models are available in a variety of sizes from 9,000 through 30,000 BTUs. LG's Mini-split standard air conditioners are easy-to-install, efficient and cost effective.

Available styles



Mini-Split Standard Indoor Unit
White
9,000-24,000 BTUs



Mini-Split Standard Indoor Unit
White Finish
30,000 BTUs



HIGH WALL DUCT-FREE • MINI-SPLIT STANDARD SINGLE ZONE

9,000 BTUs

LS090CE (A/C Model)

C 9,000 BTUs **Cooling**

LS090HE (H/P Model)

C 9,800 BTUs **Cooling**

H 9,800 BTUs **Heating**



Standard Features:

- R-410A Refrigerant
- Triple-filter air purifying system
- Dehumidifying mode
- Chaos Swing
- Jet Cool
- Cooling mode
- Heating mode (H/P model only)

- Fan mode
- Auto operation
- Manual power switch
- Defrost control (H/P model only)
- Temperature display on indoor unit
- Auto sleep mode
- Auto restart
- 24-Hour on/off timer

- Built-in low ambient standard, down to 0°F (cooling mode)
 - Ultra-quiet operation
 - Evaporator frost control
- Interior Unit Includes:**
- Wall unit
 - Installation plate & hardware
 - Remote control, batteries, holder & holder hardware

- Installation manual
- Exterior Unit Includes:**

- Exterior unit
- Exterior unit has sufficient refrigerant for charging indoor coil and a 25' line set

System Model #	LS090CE	LS090HE
Indoor Model #	LSN090CE	LSN090HE
Outdoor Model #	LSU090CE	LSU090HE
Performance		
Capacity (BTUs)	C 9,000	C 9,800 H 9,800
SEER	13	13
Air Circulation (CFM H/M/L)	250/210/170	330/280/230
Fan Speeds	4/Auto/Chaos	4/Auto/Chaos
Dehumidification (pts/hr)	2.6	3.0
Indoor dB(A)*	36/31/28	41/36/34
Outdoor dB(A)*	48	48
Electrical		
Rated Voltage Outdoor	115-60-1	115-60-1
Rated Voltage Indoor	36V DC	36V DC
Indoor Dimensions		
W x H x D (inches)	33 1/16 x 10 5/8 x 6 1/32	35 3/16 x 11 x 6 1/2
Weight (lbs.)	15.4	20.5
Outdoor Dimensions		
W x H x D (inches)	30 5/16 x 21 5/16 x 9 19/32	30 5/16 x 21 5/16 x 9 19/32
Weight (lbs.)	66.1	72.8
Thermostat Range		
Cooling / Heating (°F)	64-86	64-86/60-86

*LG verified sound ratings

12,000 BTUs



LS120CE (A/C Model)

C 11,500 BTUs **Cooling**

LS120HE (H/P Model)

C 11,500 BTUs **Cooling**

H 11,500 BTUs **Heating**

Standard Features:

- R-410A Refrigerant
- Triple-filter air purifying system
- Dehumidifying mode
- Chaos Swing
- Jet Cool
- Cooling mode

- Heating mode (H/P model only)
- Fan mode
- Auto operation
- Manual power switch
- Defrost control (H/P model only)
- Temperature display on indoor unit
- Auto sleep mode
- Auto restart

- 24-Hour on/off timer
 - Built-in low ambient standard, down to 0°F (cooling mode)
 - Ultra-quiet operation
 - Evaporator frost control
- Interior Unit Includes:**
- Wall unit
 - Installation plate & hardware
 - Remote control, batteries,

- holder & holder hardware
 - Installation manual
- Exterior Unit Includes:**
- Exterior unit
 - Exterior unit has sufficient refrigerant for charging indoor coil and a 25' line set

System Model #	LS120CE	LS120HE
Indoor Model #	LSN120CE	LSN120HE
Outdoor Model #	LSU120CE	LSU120HE
Performance		
Capacity (BTUs)	C 11,500	C 11,500 H 11,500
SEER	13	13
Air Circulation (CFM H/M/L)	330/280/230	330/280/230
Fan Speeds	4/Auto/Chaos	4/Auto/Chaos
Dehumidification (pts/hr)	3.0	3.0
Indoor dB(A)*	41/36/34	41/36/34
Outdoor dB(A)*	48	48
Electrical		
Rated Voltage Outdoor	115-1-60	115-1-60
Rated Voltage Indoor	36V DC	36V DC
Indoor Dimensions		
W x H x D (inches)	35 3/16 x 11 x 6 1/2	35 3/16 x 11 x 6 1/2
Weight (lbs.)	20.5	20.5
Outdoor Dimensions		
W x H x D (inches)	30 5/16 x 21 5/16 x 9 19/32	30 5/16 x 21 5/16 x 9 19/32
Weight (lbs.)	70.5	72.8
Thermostat Range		
Cooling / Heating (°F)	64-86	64-86/60-86

*LG verified sound ratings



Warranty: 2 years parts; 5 years compressor. See page 16 for electrical specifications, refrigerant line requirements & formulas. See page 17 for installation materials.

HIGH WALL DUCT-FREE • MINI-SPLIT STANDARD SINGLE ZONE

18,000 BTUs

LS180CE (A/C Model)

C 18,000 BTUs **Cooling**

LS180HE (H/P Model)

C 19,500 BTUs **Cooling**

H 19,500 BTUs **Heating**



Standard Features:

- Multi Power System™
- R-410A Refrigerant
- Triple-filter air purifying system
- Dehumidifying mode
- Chaos Swing
- Jet Cool
- Cooling mode

- Heating mode (H/P model only)
- Fan mode
- Auto operation
- Manual power switch
- Defrost control (H/P model only)
- Temperature display on indoor unit
- Auto sleep mode
- Auto restart
- 24-Hour on/off timer
- Ultra-quiet operation
- Evaporator frost control

Interior Unit Includes:

- Wall unit
- Installation plate & hardware
- Remote control, batteries, holder & holder hardware
- Installation manual

Exterior Unit Includes:

- Exterior unit
- Exterior unit has sufficient refrigerant for charging indoor coil and a 25' line set

System Model #	LS180CE	LS180HE
Indoor Model #	LSN180CE	LSN180HE
Outdoor Model #	LSU180CE	LSU180HE

Performance		
Capacity (BTUs)	C 18,000/17,800	C 19,500/19,000 H 19,500/19,000
SEER	13	13
Air Circulation (CFM H/M/L)	460/380/320	530/450/370
Fan Speeds	4/Auto/Chaos	4/Auto/Chaos
Dehumidification (pts/hr)	5.3	6.6
Indoor dB(A)*	41/38/36	46/41/38
Outdoor dB(A)*	55	57

Electrical		
Rated Voltage Outdoor	230/208-60-1	230/208-60-1
Rated Voltage Indoor	36V DC	36V DC
Indoor Dimensions		
W x H x D (inches)	42 15/16 x 11 13/16 x 7 1/32	42 15/16 x 11 13/16 x 7 1/32
Weight (lbs.)	28.6	28.6
Outdoor Dimensions		
W x H x D (inches)	34 5/16 x 25 13/16 x 12 5/8	34 5/16 x 31 1/2 x 12 5/8
Weight (lbs.)	149.9	169.6
Thermostat Range		
Cooling / Heating (°F)	64-86	64-86/60-86

*LG verified sound ratings

HIGH WALL DUCT-FREE • MINI-SPLIT STANDARD SINGLE ZONE

24,000 BTUs



LS240CE (A/C Model)

C 22,500 BTUs **Cooling**

LS240HE (H/P Model)

C 22,500 BTUs **Cooling**

H 22,500 BTUs **Heating**

Standard Features:

- Multi Power System™
- R-410A Refrigerant
- Triple-filter air purifying system
- Dehumidifying mode
- Chaos Swing
- Jet Cool
- Cooling mode

- Heating mode (H/P model only)
- Fan mode
- Auto operation
- Manual power switch
- Defrost control (H/P model only)
- Temperature display on indoor unit
- Auto sleep mode
- Auto restart
- 24-Hour on/off timer
- Ultra-quiet operation
- Evaporator frost control

Interior Unit Includes:

- Wall unit
- Installation plate & hardware
- Remote control, batteries, holder & holder hardware
- Installation manual

Exterior Unit Includes:

- Exterior unit
- Exterior unit has sufficient refrigerant for charging indoor coil and a 25' line set

System Model #	LS240CE	LS240HE
Indoor Model #	LSN240CE	LSN240HE
Outdoor Model #	LSU240CE	LSU240HE

Performance	LS240CE	LS240HE
Capacity (BTUs)	C 22,500/22,100	C 22,500/22,100 H 22,500/22,100

SEER	13	13
Air Circulation (CFM H/M/L)	530/450/370	530/450/370
Fan Speeds	4/Auto/Chaos	4/Auto/Chaos
Dehumidification (pts/hr)	6.6	6.6
Indoor dB(A)*	46/41/38	46/41/38
Outdoor dB(A)*	57	57

Electrical	LS240CE	LS240HE
Rated Voltage Outdoor	230/208-60-1	230/208-60-1
Rated Voltage Indoor	36V DC	36V DC

Indoor Dimensions	LS240CE	LS240HE
W x H x D (inches)	42 15/16 x 11 13/16 x 7 1/32	42 15/16 x 11 13/16 x 7 1/32

Weight (lbs.)	28.6	28.6
---------------	------	------

Outdoor Dimensions	LS240CE	LS240HE
W x H x D (inches)	34 5/16 x 31 1/2 x 12 5/8	34 5/16 x 31 1/2 x 12 5/8

Weight (lbs.)	166.6	169.6
---------------	-------	-------

Thermostat Range	LS240CE	LS240HE
Cooling / Heating (°F)	64-86	64-86/60-86

*LG verified sound ratings



Warranty: 2 years parts; 5 years compressor. See page 16 for electrical specifications, refrigerant line requirements & formulas. See page 17 for installation materials.

HIGH WALL DUCT-FREE • MINI-SPLIT STANDARD SINGLE ZONE

30,000 BTUs

LS302CE (A/C Model)

C 28,000 BTUs **Cooling**

LS302HE (H/P Model)

C 28,000 BTUs **Cooling**

H 29,000 BTUs **Heating**



Standard Features:

- Multi Power System™
- R-410A Refrigerant
- Triple-filter air purifying system
- Dehumidifying mode
- Chaos Swing
- Jet Cool
- Cooling mode

- Heating mode (H/P model only)
- Fan mode
- Auto operation
- Manual power switch
- Defrost control (H/P model only)
- Temperature display on indoor unit
- Auto sleep mode
- Auto restart
- 24-Hour on/off timer
- Ultra-quiet operation
- Evaporator frost control

Interior Unit Includes:

- Wall unit
- Installation plate & hardware
- Remote control, batteries, holder & holder hardware
- Installation manual

Exterior Unit Includes:

- Exterior unit
- Exterior unit has sufficient refrigerant for charging indoor coil and a 25' line set

System Model #	LS302CE	LS302HE
Indoor Model #	LSN302CE	LSN302HE
Outdoor Model #	LSU302CE	LSU302HE

Performance

Capacity (BTUs)	C 28,000/27,000	C 28,000/27,000 H 29,000/29,000
SEER	13	13
Air Circulation (CFM H/M/L)	740/630/520	740/630/520
Fan Speeds	4/Auto/Chaos	4/Auto/Chaos
Dehumidification (pts/hr)	7.8	7.8
Indoor dB(A)*	48/44/40	48/44/40
Outdoor dB(A)*	63	63

Electrical

Rated Voltage Outdoor	230/208-60-1	230/208-60-1
-----------------------	--------------	--------------

Rated Voltage Indoor	36V DC	36V DC
----------------------	--------	--------

Indoor Dimensions	LS302CE	LS302HE
W x H x D (inches)	47 19/32 x 13 5/8 x 8 1/16	47 19/32 x 13 5/8 x 8 1/16

Weight (lbs.)	37.5	37.5
---------------	------	------

Outdoor Dimensions	LS302CE	LS302HE
W x H x D (inches)	34 5/16 x 40 7/8 x 12 5/8	34 5/16 x 40 7/8 x 12 5/8

Weight (lbs.)	178.6	180.3
---------------	-------	-------

Thermostat Range

Cooling / Heating (°F)	64-86	64-86 /60-86
------------------------	-------	--------------

*LG verified sound ratings

MINI-SPLIT STANDARD SINGLE ZONE ELECTRICAL & REFRIGERATION • QUICK REFERENCE

Electrical Specifications									
	Type	System Model #	BTUs	Voltage		Rated Amps	MCA*	MOP**	
				Indoor	Outdoor				
Mini-Split	A/C	LS090CE	9,000	36V DC	115	7.0	15	15	
Standard	A/C	LS120CE	11,500	36V DC	115	10.5	15	25	
Single Zone	A/C	LS180CE	18,000	36V DC	230/208	8.6/9.5	15	20	
	A/C	LS240CE	22,500	36V DC	230/208	11.5/12.5	20	30	
	A/C	LS302CE	28,000	36V DC	230/208	14.5/15.6	25	30	
	H/P	LS090HE	9,800	36V DC	115	10.5	15	25	
	H/P	LS120HE	11,500	36V DC	115	10.5	15	25	
	H/P	LS180HE	19,500	36V DC	230/208	11.5/12.5	20	30	
	H/P	LS240HE	22,500	36V DC	230/208	11.5/12.5	20	30	
	H/P	LS302HE	28,000	36V DC	230/208	14.5/15.6	25	30	

All equipment single phase.

NOTE: Please see local electrical codes for proper wire specifications.

*Minimum Circuit Ampacity

**Maximum Overcurrent Protection

***For LS180HE, LS240CE/HE, LS302CE/HE

Wire Size	
Minimum AWG	14-3 12-3***
Indoor/Outdoor Connecting Cable Minimum AWG	18-4

Refrigerant Line & Formula Specifications***									
	Type	System Model #	BTUs	Pipe size		Additional Refrigerant	Max. length each pipe	Max. elevation	
				Liquid	Suction				
Mini Split	A/C	LS090CE	9,000	1/4"	3/8"	0.25 oz./ft.	50'	25'	
Standard	A/C	LS120CE	11,500	1/4"	1/2 "	0.25 oz./ft.	50'	25'	
Single Zone	A/C	LS180CE	18,000	1/4"	1/2 "	0.25 oz./ft.	100'	50'	
	A/C	LS240CE	22,500	1/4"	5/8"	0.25 oz./ft.	100'	50'	
	A/C	LS302CE	28,000	1/4"	5/8"	0.35 oz./ft.	100'	50'	
	H/P	LS090HE	9,800	1/4"	1/2"	0.25 oz./ft.	50'	25'	
	H/P	LS120HE	11,500	1/4"	1/2 "	0.25 oz./ft.	50'	25'	
	H/P	LS180HE	19,500	1/4"	5/8 "	0.25 oz./ft.	100'	50'	
	H/P	LS240HE	22,500	1/4"	5/8"	0.25 oz./ft.	100'	50'	
	H/P	LS302HE	28,000	1/4"	5/8"	0.35 oz./ft.	100'	50'	

***Each system is pre-charged with enough refrigerant to charge 25 ft. of line and the interior unit.

NOTE: Systems having the outdoor unit mounted above the indoor unit (e.g. basement installations) have the following additional requirement:

For systems with elevation of 25 ft. (see chart above and figure A), refrigerant lines must be oil trapped between 8 ft. and 16.4 ft. of elevation.

For systems with elevation of greater than 25 ft. (see chart above), refrigerant lines must be oil trapped at least every 16.4 ft. of elevation.

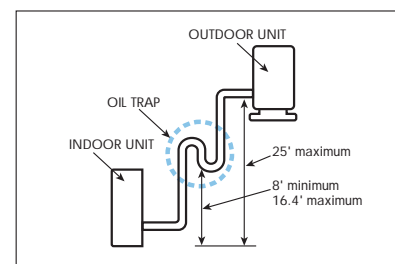


Figure A.
Example: 25 ft. maximum elevation.

LG INTERNET SALES POLICY Duct Free Air Conditioning Products

LG's expressed Duct Free Air Conditioning warranty policy applies only to products sold and installed by qualified air conditioning contractors.

Because products sold via the Internet cannot be assured of a quality installation by a qualified air conditioning contractor, therefore, LG's expressed warranty may not apply to internet sales.

LG supports and recommends that a qualified air conditioning contractor properly size and install all LG Duct Free Air Conditioning products for optimal performance and long life.

FOR THE HVAC PROFESSIONAL INSTALLATION • MATERIALS

Don't forget to **BUY**...

- Mounting screws and anchors (wall mount and ceiling cassette)
- Optional condensate pump (interior wall installation only)
- 1/2" condensate drain tubing
- Hose clamps
- For wall-mounted: Four #18 AWG conductor cable to connect indoor and outdoor units (See local Code)
- For floor standing: Three #14 AWG conductor cable to connect indoor and outdoor units (See local Code)
- Closed cell insulating tubing for suction line
- Closed cell insulating tubing for heat pump line (heat pump models only)
- Refrigerant line
- Electrical tape
- Condenser mounting pad
- Disconnect and wiring for condenser unit
- Plastic duct and installation hardware to conceal connecting tubing on exterior walls
- Anchor bolts (optional for floor standing)

Don't forget to **BRING**...

- Level gauge
- 2" hole core drill
- Flaring tool set
- Gas leak detector
- Vacuum pump
- Gauge manifold
- Micron gauge

FLEX MULTI SPLIT AIR CONDITIONERS DUAL ZONE & TRI-ZONE

Flex Multi Split Systems

The larger, Flex Multi Split systems operate two or three interior units that are mounted in separate rooms. Each indoor unit comes with its own remote control, allowing the customer to set the temperature individually in different rooms. These units are connected to a single exterior unit.

9,000 and 12,000 Flex Multi indoor units can be combined to achieve between 18,000 and 24,000 BTUs on a Dual Zone system, and from 27,000 to 36,000 BTUs on a Tri-Zone system. The interior units are available in a variety of styles including Art Cool and Standard models. Both Dual Zone and Tri-Zone are available in Cooling Only or Heat Pump systems.

Dual Zone Flex Multi System
Combined 18,000 to 24,000 BTUs



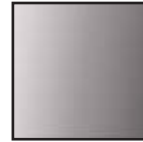
Tri-Zone Flex Multi System
Combined 27,000 to 36,000 BTUs



Available styles and finishes



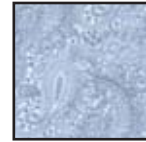
Flex Multi Split
Art Cool Indoor Unit
Mirror Finish



Standard Mirror
PSAPECR10



Silver
PSAPECV10



Blue
PSAPECB10



Flex Multi Split
Art Cool Indoor Unit Metal Finish



Standard Metal
PSAPPCMB10



Blue
PSAPPCB10



White Wood
PSAPPCW10



Wood
PSAPPCD10



VanGogh
PSAPPAA10



Sisley
PSAPPAS10



Flex Multi Split
Standard Indoor Unit

18,000-24,000 BTUs Dual Zone

Outdoor Unit

C LMU240CE

Choose any two indoor cooling units for a combined 18,000 - 24,000 BTUs cooling. Pick the same style, or mix and match.

Outdoor Unit

C **H** LMU240HE

Choose any two indoor heat pump units for a combined 18,000 - 24,000 BTUs heating/cooling. Pick the same style, or mix and match.

LMN090CE (A/C Model Standard)
LMAN090CNS (A/C Model Art Cool Metal)
 9,000 BTUs **Cooling Only**

LMN090HE (H/P Model Standard)
LMAN090HNS (H/P Model Art Cool Metal)
 9,000 BTUs **Cooling,**
 9,000 BTUs **Heating**

LMN120CE (A/C Model Standard)
LMAN120CNS (A/C Model Art Cool Metal)
LMAN121CNM (A/C Model Art Cool Mirror)
 12,000 BTUs **Cooling Only**

LMN120HE (H/P Model Standard)
LMAN120HNS (H/P Model Art Cool Metal)
LMAN121HNM (H/P Model Art Cool Mirror)
 12,000 BTUs **Cooling,**
 12,000 BTUs **Heating**



Cooling Only
Outdoor Unit LMU240CE



Heat Pump
Outdoor Unit LMU240HE



Model #	LMN090CE	LMAN090CNS	LMN120CE	LMAN120CNS	LMAN121CNM
Performance					
Capacity (BTUs)	C 9,000/8,850	9,000/8,850	12,000/11,800	12,000/11,800	12,000/11,800
Air Circulation (CFM H/M/L)	250/210/170**	264/230/177**	330/280/230**	265/230/177**	330/261/194**
Fan Speeds	4/Auto/Chaos	4/Auto/Chaos	4/Auto/Chaos	4/Auto/Chaos	4/Auto/Chaos
Dehumidification (pts/hr)	2.3	2.3	2.5	3.0	2.5
Indoor dB(A)*	31/29/22	37/31/27	39/25/21	43/39/31	39/25/21
Outdoor dB(A)*	50	50	50	50	50
Electrical					
Rated Voltage Outdoor	230/208-60-1	230/208-60-1	230/208-60-1	230/208-60-1	230/208-60-1
Rated Voltage Indoor	36V DC	36V DC	36V DC	36V DC	36V DC
Indoor Dimensions					
W x H x D (inches)	33 1/16 x 10 5/8 x 6 1/32	22 13/32 x 22 13/32 x 5 3/8 x	35 3/16 x 11 x 6 1/2	22 13/32 x 22 13/32 x 5 3/8 x	36 x 11 3/32 x 6 1/2
Weight (lbs.)	15.4**	24.9**	20.5**	24.9**	20.5**
Outdoor Dimensions					
W x H x D (inches)	40 5/32 x 34 3/16 x 17 5/16	40 5/32 x 34 3/16 x 17 5/16	40 5/32 x 34 3/16 x 17 5/16	40 5/32 x 34 3/16 x 17 5/16	40 5/32 x 34 3/16 x 17 5/16
Weight (lbs.)	139.0	139.0	139.0	139.0	139.0
Thermostat Range					
Cooling / Heating (°F)	64-86	64-86	64-86	64-86	64-86

*LG verified sound ratings

**Per indoor unit

18,000-24,000 BTUs Dual Zone

Available styles – See page 18 for color options.



Mirror Finish[®]
12,000 BTUs Indoor Model #s:
LMAN121CNM, LMAN121HNM



Art Cool Metal Finish[®]
9,000 BTUs Indoor Model #s:
LMAN090CNS, LMAN090HNS
12,000 BTUs Indoor Model #s:
LMAN120CNS, LMAN120HNS



Standard[®]
9,000 BTUs Indoor Model #s:
LMN090CE, LMN090HE
12,000 BTUs Indoor Model #s:
LMN120CE, LMN120HE

Features:

- Changeable front color panel option[§]
- Multi Power System™
- R-410A Refrigerant
- Plasma Air Purifying System[§]
- Triple-filter air purifying system[®]
- Self cleaning indoor coil
- Dehumidifying mode
- Chaos Swing

- Jet Cool
- Three-way cooling[†]
- Cooling mode
- Heating mode (H/P Model only)
- Fan mode
- Auto operation
- Manual power switch
- Defrost control (H/P model only)
- Temperature display on indoor unit

- Auto sleep mode
 - Auto restart
 - 24-Hour on/off timer
 - Evaporator frost control
 - Ultra-quiet operation
- Interior Unit Includes:**
- 2 Wall units
 - 2 Wall unit installation plates & hardware
 - 2 Remote controls w/batteries,

- 2 holders & holder hardware
 - Installation manual
- Exterior Unit Includes:**
- Exterior unit
 - Exterior unit has sufficient refrigerant for charging 2 indoor coils and a 25' line set per indoor unit

Model #	LMN090HE	LMAN090HNS	LMN120HE	LMAN120HNS	LMAN121HNM
Performance					
Capacity (BTUs)	^C 9,000/8,850 ^H 9,000/9,000	9,000/8,850 9,000/9,000	12,000/11,800 12,000/12,000	12,000/11,800 12,000/12,000	12,000/11,800 12,000/12,000
Air Circulation (CFM H/M/L)	250/210/170**	264/230/177**	330/280/230**	318/261/194**	330/261/194**
Fan Speeds	4/Auto/Chaos	4/Auto/Chaos	4/Auto/Chaos	4/Auto/Chaos	4/Auto/Chaos
Dehumidification (pts/hr)	2.3	2.3	2.5	3.0	2.5
Indoor dB(A)*	31/29/22	37/31/27	39/25/21	43/39/31	39/25/21
Outdoor dB(A)*	50	50	50	50	50
Electrical					
Rated Voltage Outdoor	230/208-60-1	230/208-60-1	230/208-60-1	230/208-60-1	230/208-60-1
Rated Voltage Indoor	36V DC	36V DC	36V DC	36V DC	36V DC
Indoor Dimensions					
W x H x D (inches)	33 1/16 x 10 5/8 x 6 1/32	22 13/32 x 22 13/32 x 5 3/8 x	35 3/16 x 11 x 6 1/2	22 13/32 x 22 13/32 x 5 3/8 x	36 x 11 3/32 x 6 1/2
Weight (lbs.)	15.4**	24.9**	20.5**	24.9**	20.5**
Outdoor Dimensions					
W x H x D (inches)	40 5/32 x 34 3/16 x 17 5/16	40 5/32 x 34 3/16 x 17 5/16	40 5/32 x 34 3/16 x 17 5/16	40 5/32 x 34 3/16 x 17 5/16	40 5/32 x 34 3/16 x 17 5/16
Weight (lbs.)	139.0	139.0	139.0	139.0	139.0
Thermostat Range					
Cooling / Heating (°F)	64-86/60-86	64-86/60-86	64-86/60-86	64-86/60-86	64-86/60-86

*LG verified sound ratings

**Per indoor unit



Warranty: 2 years parts; 5 years compressor. See page 23 for electrical specifications, refrigerant line requirements & formulas. See page 17 for installation materials.

27,000-36,000 BTUs Tri-Zone

Outdoor Unit

C LMU360CE

Choose any three indoor cooling units for a combined 27,000 - 36,000 BTUs cooling. Pick the same style, or mix and match.

Outdoor Unit

C H LMU360HE

Choose any three indoor heat units for a combined 27,000 - 36,000 BTUs heating/cooling. Pick the same style, or mix and match.



Cooling Only
Outdoor Unit LMU360CE



Heat Pump
Outdoor Unit LMU360HE



LMN090CE (A/C Model Standard)

LMAN090CNS (A/C Model Art Cool Metal)
9,000 BTUs **Cooling Only**

LMN120CE (A/C Model Standard)

LMAN120CNS (A/C Model Art Cool Metal)
LMAN121CNM (A/C Model Art Cool Mirror)
12,000 BTUs **Cooling Only**

LMN090HE (H/P Model Standard)

LMAN090HNS (H/P Model Art Cool Metal)
9,000 BTUs **Cooling,**
9,000 BTUs **Heating**

LMN120HE (H/P Model Standard)

LMAN120HNS (H/P Model Art Cool Metal)
LMAN121HNM (H/P Model Art Cool Mirror)
12,000 BTUs **Cooling,**
12,000 BTUs **Heating**

Model #	LMN090CE	LMAN090CNS	LMN120CE	LMAN120CNS	LMAN121CNM
Performance					
Capacity (BTUs)	C 9,000/8,850	9,000/8,850	12,000/11,800	12,000/11,800	12,000/11,800
Air Circulation (CFM H/M/L)	250/210/170**	264/230/177**	330/280/230**	265/230/177**	330/261/194**
Fan Speeds	4/Auto/Chaos	4/Auto/Chaos	4/Auto/Chaos	4/Auto/Chaos	4/Auto/Chaos
Dehumidification (pts/hr)	2.3	2.3	2.5	3.0	2.5
Indoor dB(A)*	31/29/22	37/31/27	39/25/21	43/39/31	39/25/21
Outdoor dB(A)*	50	50	50	50	50
Electrical					
Rated Voltage Outdoor	230/208-60-1	230/208-60-1	230/208-60-1	230/208-60-1	230/208-60-1
Rated Voltage Indoor	36V DC	36V DC	36V DC	36V DC	36V DC
Indoor Dimensions					
W x H x D (inches)	33 1/16 x 10 5/8 x 6 1/32	22 13/32 x 22 13/32 x 5 3/8 x	35 3/16 x 11 x 6 1/2	22 13/32 x 22 13/32 x 5 3/8 x	36 x 11 3/32 x 6 1/2
Weight (lbs.)	15.4**	24.9**	20.5**	24.9**	20.5**
Outdoor Dimensions					
W x H x D (inches)	41 5/32 x 44 7/8 x 17 5/16	41 5/32 x 44 7/8 x 17 5/16	41 5/32 x 44 7/8 x 17 5/16	41 5/32 x 44 7/8 x 17 5/16	41 5/32 x 44 7/8 x 17 5/16
Weight (lbs.)	172.0	172.0	172.0	172.0	172.0
Thermostat Range					
Cooling / Heating (°F)	64-86	64-86	64-86	64-86	64-86

*LG verified sound ratings

**Per indoor unit

27,000-36,000 BTUs Tri-Zone

Available styles – See page 18 for color options.



Mirror Finish[®]
12,000 BTUs Indoor Model #s:
LMAN121CNM, LMAN121HNM



Art Cool Metal Finish[†]
9,000 BTUs Indoor Model #s:
LMAN090CNS, LMAN090HNS
12,000 BTUs Indoor Model #s:
LMAN120CNS, LMAN120HNS



Standard[®]
9,000 BTUs Indoor Model #s:
LMN090CE, LMN090HE
12,000 BTUs Indoor Model #s:
LMN120CE, LMN120HE

Features:

- Changeable front color panel option[§]
- Multi Power System™
- R-410A Refrigerant
- Plasma Air Purifying System[§]
- Triple-filter air purifying system[®]
- Self cleaning indoor coil
- Dehumidifying mode
- Chaos Swing

- Jet Cool
- Three-way cooling[†]
- Cooling mode
- Heating mode (H/P Model only)
- Fan mode
- Auto operation
- Manual power switch
- Defrost control (H/P model only)
- Temperature display on indoor unit

- Auto sleep mode
 - Auto restart
 - 24-Hour on/off timer
 - Evaporator frost control
 - Ultra-quiet operation
- Interior Unit Includes:**
- 3 Wall units
 - 3 Wall unit installation plates & hardware
 - 3 Remote controls w/batteries,

- 3 holders & holder hardware
 - Installation manual
- Exterior Unit Includes:**
- Exterior unit
 - Exterior unit has sufficient refrigerant for charging 3 indoor coils and a 25' line set per indoor unit

Model #	LMN090HE	LMAN090HNS	LMN120HE	LMAN120HNS	LMAN121HNM
Performance					
Capacity (BTUs)	C 9,000/8,850 H 9,000/9,000	9,000/8,850 9,000/9,000	12,000/11,800 12,000/12,000	12,000/11,800 12,000/12,000	12,000/11,800 12,000/12,000
Air Circulation (CFM H/M/L)	250/210/170**	264/230/177**	330/280/230**	318/261/194**	330/261/194**
Fan Speeds	4/Auto/Chaos	4/Auto/Chaos	4/Auto/Chaos	4/Auto/Chaos	4/Auto/Chaos
Dehumidification (pts/hr)	2.3	2.3	2.5	3.0	2.5
Indoor dB(A)*	31/29/22	37/31/27	39/25/21	43/39/31	39/25/21
Outdoor dB(A)*	50	50	50	50	50
Electrical					
Rated Voltage Outdoor	230/208-60-1	230/208-60-1	230/208-60-1	230/208-60-1	230/208-60-1
Rated Voltage Indoor	36V DC	36V DC	36V DC	36V DC	36V DC
Indoor Dimensions					
W x H x D (inches)	33 1/16 x 10 5/8 x 6 1/32	22 13/32 x 22 13/32 x 5 3/8 x	35 3/16 x 11 x 6 1/2	22 13/32 x 22 13/32 x 5 3/8 x	36 x 11 3/32 x 6 1/2
Weight (lbs.)	15.4**	24.9**	20.5**	24.9**	20.5**
Outdoor Dimensions					
W x H x D (inches)	41 5/32 x 44 7/8 x 17 5/16	41 5/32 x 44 7/8 x 17 5/16	41 5/32 x 44 7/8 x 17 5/16	41 5/32 x 44 7/8 x 17 5/16	41 5/32 x 44 7/8 x 17 5/16
Weight (lbs.)	172.0	172.0	172.0	172.0	172.0
Thermostat Range					
Cooling / Heating (°F)	64-86/60-86	64-86/60-86	64-86/60-86	64-86/60-86	64-86/60-86

*LG verified sound ratings

**Per indoor unit



ELECTRICAL & REFRIGERATION • QUICK REFERENCE

Electrical Specifications									
Zone	Type	Model	BTUs	Voltage		Rated Amps	MCA*	MOP**	
				Indoor	Outdoor				
Flex Multi Split Indoor Units	A/C		LMN090CE	9,000	36V DC	—	0.5	—	—
	A/C		LMAN090CNS	9,000	36V DC	—	1.3	—	—
	A/C		LMN120CE	12,000	36V DC	—	0.5	—	—
	A/C		LMAN120CNS	12,000	36V DC	—	1.3	—	—
	A/C		LMAN121CNM	12,000	36V DC	—	0.5	—	—
	H/P		LMN090HE	9,000	36V DC	—	0.5	—	—
	H/P		LMAN090HNS	9,000	36V DC	—	1.3	—	—
	H/P		LMN120HE	12,000	36V DC	—	0.5	—	—
	H/P		LMAN120HNS	12,000	36V DC	—	1.3	—	—
	H/P		LMAN121HNM	12,000	36V DC	—	0.5	—	—
Outdoor Units	A/C		LMU240CE	24,000		230/208	11.1	20	20
	A/C		LMU360CE	36,000		230/208	16.6	20	30
	H/P		LMU240HE	24,000		230/208	11.1	20	20
	H/P		LMU360HE	36,000		230/208	16.6	20	30

All equipment single phase.

*Minimum Circuit Ampacity
**Maximum Overcurrent Protection

NOTE: Please see local electrical codes for proper wire specifications.

Wire Size	
Minimum AWG	14-3
Indoor/Outdoor Connecting Cable Minimum AWG	18-4

Refrigerant Line & Formula Specifications***									
	Type	Model	BTUs	Pipe size		Additional Refrigerant	Max. length each pipe	Max. elevation	
				Liquid	Suction				
Flex Multi Split	A/C		LMN090CE	9,000	1/4"	3/8"	0.21 oz./ft.	50'	25'
	A/C		LMAN090CNS	9,000	1/4"	3/8"	0.21 oz./ft.	50'	25'
	A/C		LMN120CE	12,000	1/4"	3/8"	0.21 oz./ft.	50'	25'
	A/C		LMAN120CNS	12,000	1/4"	3/8"	0.21 oz./ft.	50'	25'
	A/C		LMAN121CNM	12,000	1/4"	3/8"	0.21 oz./ft.	50'	25'
	H/P		LMN090HE	9,000	1/4"	3/8"	0.21 oz./ft.	50'	25'
	H/P		LMAN090HNS	9,000	1/4"	3/8"	0.21 oz./ft.	50'	25'
	H/P		LMN120HE	12,000	1/4"	3/8"	0.21 oz./ft.	50'	25'
	H/P		LMAN120HNS	12,000	1/4"	3/8"	0.21 oz./ft.	50'	25'
	H/P		LMAN121HNM	12,000	1/4"	3/8"	0.21 oz./ft.	50'	25'

***Dual Zone: exterior unit has sufficient refrigerant for charging two indoor coils and a 25 ft. line set per indoor unit.

Tri Zone: exterior unit has sufficient refrigerant for charging three indoor coils and a 25 ft. line set per indoor unit.

NOTE: Systems having the outdoor unit mounted above the indoor unit (e.g. basement installations) have the following additional requirement:

For systems with maximum elevation of 25 ft. (see chart above and Figure A), refrigerant lines must be oil trapped between 8 ft. and 16.4 ft. of elevation.

For systems with elevation of greater than 25 ft. (see chart above), refrigerant lines must be oil trapped at least every 16.4 ft. of elevation.

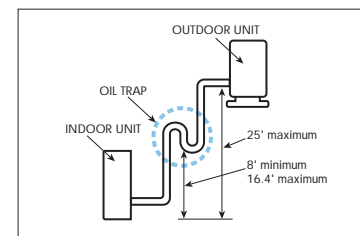


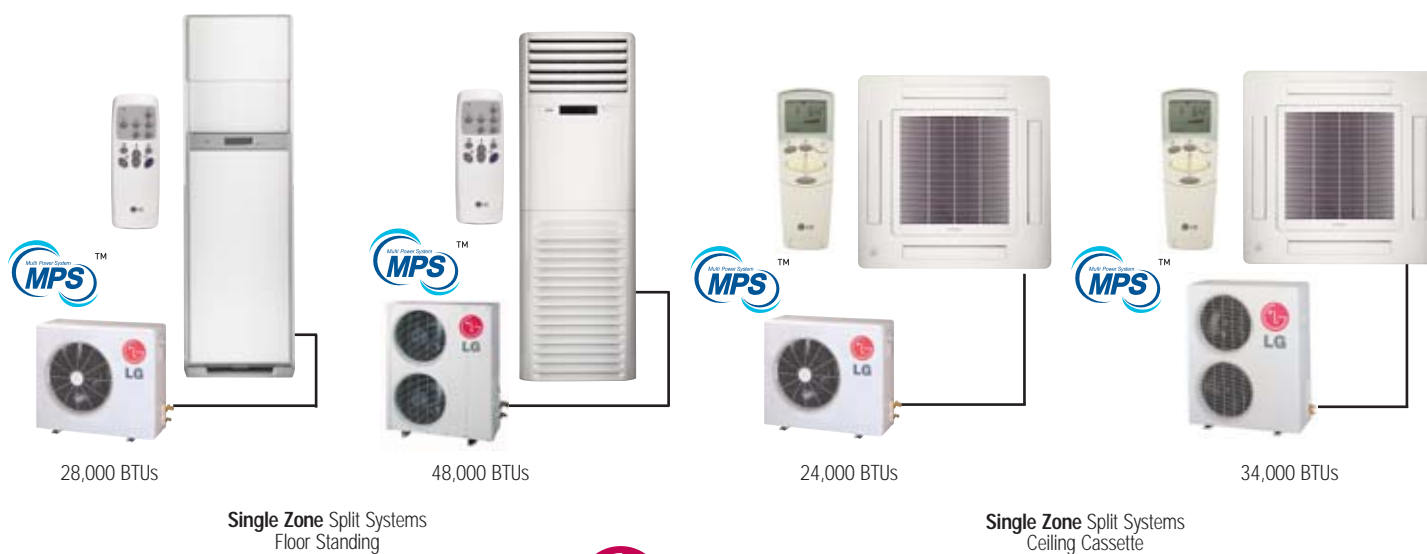
Figure A.
Example: 25 ft. maximum elevation.

DUCT-FREE FLOOR STANDING & CEILING CASSETTE AIR CONDITIONERS

High Capacity Split Systems

The floor-standing and ceiling cassette models are ideal for light commercial applications, and work well in large, open spaces. The ceiling cassette is a useful alternative when floor space is limited.

The outdoor unit for both operate on high-voltage (230/208) power and utilize one or two compressors, depending on the size.



DUCT-FREE FLOOR STANDING SINGLE ZONE

28,000 BTUs

LF300CP (A/C Model)

Ⓒ 28,000 BTUs Cooling



Standard Features:

- Multi Power System™
- R-22 Refrigerant
- Chaos Swing
- Three dimensional cooling
- Jet Cool
- Cooling mode
- Dehumidifying mode

Evaporator frost control

- 7-Hour on/off timer
- Auto restart
- Auto operation
- Plasma Air Purifying System
- Temperature display on indoor unit
- Built-in remote control holder

Control lock function

- Ultra quiet turbo fan
- ### Interior Unit Includes:
- Floor standing unit
 - Remote control and batteries
 - Installation manual

Exterior Unit Includes:

- Exterior unit
- Exterior unit has sufficient refrigerant for charging indoor coil and a 25' line set

System Model

LF300CP

Indoor Model

LFN300CP

Outdoor Model

LFU300CP

Performance

Capacity (BTUs) Ⓒ 28,000/28,000

SEER 13

Air Circulation (CFM H/M/L) 671/565/459

Fan Speeds (Cooling/Fan) 4/3

Dehumidification (pts/hr) 7.8

Indoor dB(A)* 45/42/40

Outdoor dB(A)* 53

Electrical

Rated Voltage Outdoor 230/208-60-1

Rated Voltage Indoor 230/208

Indoor Dimensions 22 13/32 x

W x H x D (inches) 71 21/32 x
12 1/4

Weight (lbs.) 72.7

Outdoor Dimensions 34 5/16 x

W x H x D (inches) 25 13/16 x
12 19/32

Weight (lbs.) 136.6

Thermostat Range

Cooling (°F) 61-86

*LG verified sound ratings

DUCT-FREE FLOOR STANDING SINGLE ZONE

48,000 BTUs

LF480CE (A/C Model)
48,000 BTUs **Cooling**



Standard Features:

- Multi Power System™
- Chaos Swing
- Jet Cool
- Cooling mode
- Dehumidifying mode
- Fan mode
- Evaporator frost control

- 7-Hour on/off timer
- Auto restart
- Auto operation
- Temperature display on indoor unit
- Control lock function
- Ultra quiet turbo fan

Interior Unit Includes:

- Floor standing unit
- Remote control and batteries
- Installation manual

Exterior Unit Includes:

- Exterior unit
- Exterior unit has sufficient refrigerant for charging indoor coil and a 25' line set

System Model #	LF480CE
Indoor Model #	LFN480CE
Outdoor Model #	LFU480CE
Performance	
Capacity (BTUs)	Ⓒ 48,000/48,000
SEER	13
Air Circulation (CFM H/M/L)	1,236/1,059/882
Fan Speeds (Cooling/Fan)	3/3
Dehumidification (pts/hr)	8.7
Indoor dB(A)*	56/53/51
Outdoor dB(A)*	58
Electrical	
Rated Voltage Outdoor	230/208-60-1
Rated Voltage Indoor	230/208
Indoor Dimensions	
W x H x D (inches)	23 7/32 x 71 1/4 x 17 5/16
Weight (lbs.)	127.9
Outdoor Dimensions	
W x H x D (inches)	35 7/16 x 48 7/32 x 14 9/16
Weight (lbs.)	198.4
Thermostat Range	
Cooling (°F)	61-86

*LG verified sound ratings



Warranty: 2 years parts; 5 years compressor.
See page 29 for electrical specifications, refrigerant line requirements & formulas. See page 17 for installation materials.

CEILING CASSETTE

24,000 BTUs

LC240CP (A/C Model)

C 24,000 BTUs Cooling



Standard Features:

- Multi Power System™
- R-410A Refrigerant
- Internal condensate pump included
- Swirl Wind
- Four-way cooling
- Jet Cool

- Cooling mode
- Dehumidifying mode
- Fan mode
- Evaporator frost control
- 24-Hour on/off timer
- Auto restart
- Auto operation
- Plasma Air Purifying System

- Temperature display on remote
 - Ultra quiet turbo fan
- ### Interior Unit Includes:
- Ceiling unit
 - Wired control and wireless remote control with batteries
 - Installation manual

Exterior Unit Includes:

- Exterior unit
- Exterior unit has sufficient refrigerant for charging indoor coil and a 25' line set

System Model

LC240CP

Indoor Model #

LCN240CP

Outdoor Model #

LCU240CP

Performance

Capacity (BTUs) **C** 24,000/23,500

SEER 13

Air Circulation (CFM H/M/L) 650/600/550

Fan Speeds (Cooling/Fan) 5/4

Dehumidification (pts/hr) 6.3

Indoor dB(A)* 38/35/32

Outdoor dB(A)* 55

Electrical

Rated Voltage Outdoor 230/208-60-1

Rated Voltage Indoor 230/208

Indoor Dimensions 33 1/16 x

W x H x D (inches) 33 1/16 x
8 7/8

Weight (lbs.) 57.3

Outdoor Dimensions 34 1/4 x

W x H x D (inches) 31 1/2 x
12 5/8

Weight (lbs.) 160.0

Thermostat Range

Cooling (°F) 64-86

*LG verified sound ratings

CEILING CASSETTE

34,000 BTUs

LC340CP (A/C Model)

C 34,000 BTUs **Cooling**



Standard Features:

- Multi Power System™
- R-410A Refrigerant
- Internal condensate pump included
- Swirl Wind
- Four-way cooling
- Jet Cool

- Cooling mode
- Dehumidifying mode
- Fan mode
- Evaporator frost control
- 24-Hour on/off timer
- Auto restart
- Auto operation
- Plasma Air Purifying System

- Temperature display on remote

Interior Unit Includes:

- Ultra quiet turbo fan
- Ceiling unit
- Wired control and wireless remote control with batteries
- Installation manual

Exterior Unit Includes:

- Exterior unit
- Exterior unit has sufficient refrigerant for charging indoor coil and a 25' line set

System Model

LC340CP

Indoor Model #

LCN340CP

Outdoor Model #

LCU340CP

Performance

Capacity (BTUs) **C** 34,000/33,500

SEER 13

Air Circulation (CFM H/M/L) 850/800/750

Fan Speeds (Cooling/Fan) 5/4

Dehumidification (pts/hr) 7.8

Indoor dB(A)* 40/37/34

Outdoor dB(A)* 58

Electrical

Rated Voltage Outdoor 230/208-60-1

Rated Voltage Indoor 230/208

Indoor Dimensions 33 1/16 x

W x H x D (inches) 33 1/16 x

8 7/8

Weight (lbs.) 57.3

Outdoor Dimensions 35 7/16 x

W x H x D (inches) 45 7/8 x

14 9/16

Weight (lbs.) 190.0

Thermostat Range

Cooling (°F) 64-86

*LG verified sound ratings



Warranty: 2 years parts; 5 years compressor. See page 29 for electrical specifications, refrigerant line requirements & formulas. See page 17 for installation materials.

**DUCT-FREE • FLOOR STANDING & CEILING CASSETTE • SINGLE ZONE
ELECTRICAL & REFRIGERATION • QUICK REFERENCE**

Electrical Specifications								
	Type	System #	BTUs	Voltage		Rated Amps	MCA*	MOP**
				Indoor	Outdoor			
Floor Standing	A/C	LF300CP	28,000	230/208	230/208	11.5/11.5	17***	25***
	A/C	LF480CP	48,000	230/208	230/208	20.0/20.0	28.9***	50***
Ceiling Cassette	A/C	LC240CP	24,000	230/208	230/208	11.5/12.4	17.3	30
	A/C	LC340CP	34,000	230/208	230/208	15.1/16.5	27.5	50

All equipment single phase.

NOTE: Please see local electrical codes for proper wire specifications.

*Minimum Circuit Ampacity

**Maximum Overcurrent Protection

***Floor standing MCA + MOP calculated for indoor and outdoor units connected to common breaker (Preferred method).

Wire Size	
Minimum AWG	14-3
Indoor/Outdoor Connecting Cable Minimum AWG	14-3

Refrigerant Line Specifications [†]								
	Type	System #	BTUs	Pipe size		Additional Refrigerant	Max. length each pipe	Max. elevation
				Liquid	Suction			
Floor Standing	A/C	LF300CP	28,000	3/8"	5/8"	0.32 oz./ft.	100'	66'
	A/C	LF480CP	48,000	3/8"	3/4"	0.42 oz./ft.	131'	82'
Ceiling Cassette	A/C	LC240CP	24,000	1/4"	1/2"	0.32 oz./ft.	100'	50'
	A/C	LC340CP	34,000	1/4"	5/8"	0.42 oz./ft.	115'	66'

[†]Each system is pre-charged with enough refrigerant to charge 25 ft. of line and the interior unit.

NOTE: Systems having the outdoor unit mounted above the indoor unit (e.g. basement installations) have the following additional requirement:

For systems with maximum elevation of 25 ft. (see chart above and Figure A), refrigerant lines must be oil trapped between 8 ft. and 16.4 ft. of elevation.

For systems with elevation of greater than 25 ft. (see chart above), refrigerant lines must be oil trapped at least every 16.4 ft. of elevation.

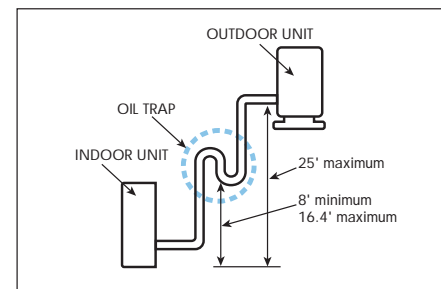


Figure A.
Example: 25 ft. maximum elevation.

THROUGH-THE-WALL AIR CONDITIONERS

LG's Through-The-Wall models offer versatile, energy efficient solutions for residential and light commercial applications.

Most of LG's Through-The-Wall models are ENERGY STAR® qualified, an important feature for energy conscious customers. All feature Gold Fin™ Technology which protects the unit from the corrosive effects of the salt air and extend the operating life.

BTU sizes range from 8,000 - 14,000, and both cooling only and heat/cool models are offered. Also, the standard size chassis fits into any competitive wall sleeve, allowing for an easy upgrade for an existing system.



THROUGH-THE-WALL AIR CONDITIONERS

8,000-14,000 BTUs

- **LT0810CR** (A/C Model)
8,000 BTUs **Cooling**
- LT1010CR** (A/C Model)
9,800 BTUs **Cooling**
- LT1030CR** (A/C Model)
10,000 BTUs **Cooling**

- LT1210CR** (A/C Model)
11,500 BTUs **Cooling**
- LT1230CR** (A/C Model)
11,700 BTUs **Cooling**
- LT1430CR** (A/C Model)
13,200 BTUs **Cooling**



Standard Features:

- Gold Fin™ anti-corrosion treatment
- Cooling mode
- Fan mode

- Auto sleep mode

- Auto restart
- 12-Hour on/off timer

System Includes:

- Wall unit
- Remote control and batteries
- Installation manual
- Trim Kit

System Model #	LT0810CR	LT1010CR	LT1030CR	LT1210CR	LT1230CR	LT1430CR
Performance						
Capacity (BTUs)	● 8,000	9,800	10,000/9,800	11,500	11,700/11,400	13,200/12,800
EER	9.6	8.8	9.4/9.4	8.8	9.4/9.4	8.5/8.5
Air Circulation (CFM H/L)	260/220	285/225	285/225	290/230	290/230	310/250
Fan Speeds (Cooling/Fan)	3/3	3/3	3/3	3/3	3/3	3/3
Dehumidification (pts/hr)	2.2	3.2	3.2	3.8	3.8	4.3
Indoor dB(A)*	49/46	51/48	51/48	52/49	52/49	53/50
Outdoor dB(A)*	59	60	60	61	61	62
Electrical						
Rated Voltage	115-60-1	115-60-1	230/208-60-1	115-60-1	230/208-60-1	230/208-60-1
Dimensions						
W x H x D (inches)	14 13/32 x 20 3/32	14 13/32 x 20 3/32	14 13/32 x 20 3/32	14 13/32 x 20 3/32	14 13/32 x 20 3/32	14 13/32 x 20 3/32
Weight (lbs.)	73.0	78.0	78.0	80.0	80.0	87.0
Thermostat Range						
Cooling (°F)	60-86	60-86	60-86	60-86	60-86	60-86

*LG verified sound rating

THROUGH-THE-WALL AIR CONDITIONERS

10,000-12,000 BTUs



- C H** **LT1030HR** (H/C Model)
10,000 BTUs **Cooling & Heating**
- LT1230HR** (H/C Model)
11,700 BTUs **Cooling & Heating**

Standard Features:

- Gold Fin™ anti-corrosion treatment
- Cooling mode
- Heating mode
- Fan mode

- Auto sleep mode
- Auto restart
- 12-Hour on/off timer

System Includes:

- Wall unit
- Remote control and batteries
- Installation manual
- Trim Kit

System Model #	LT1030HR	LT1230HR
Performance		
Capacity (BTUs)	C 10,000/9,800 H 11,200/9,200	11,700/11,400 11,200/9,200
EER	9.4/9.4	9.4/9.4
Air Circulation (CFM H/L)	285/225	290/230
Fan Speeds (Cooling/Heating/Fan)	2/2/2	2/2/2
Dehumidification (pts/hr)	3.2	3.8
Indoor dB(A)*	51/48	52/49
Outdoor dB(A)*	60	61
Electrical		
Rated Voltage	230/208-60-1	230/208-60-1
Dimensions		
W x H x D (inches)	24 21/32 x 14 13/32 x 19 21/32	24 21/32 x 14 13/32 x 19 21/32
Weight (lbs.)	78.0	80.0
Thermostat Range		
Cooling/Heating (°F)	60-86/54-86	60-86/54-86

*LG verified sound rating



1-year full system warranty, parts and labor. Warranty on unit for years 2-5: parts only, exclusive of the refrigeration system.
Warranty on sealed refrigeration system: 5 year, parts and labor.
See page 33 for electrical specifications and accessories.

THROUGH-THE-WALL AIR CONDITIONERS

ELECTRICAL • QUICK REFERENCE

Electrical Specifications								
Type		System Model #	BTUs	Voltage	Rated Amps	MCA*	MOP**	
TTW	A/C	C	LT0810CR	8,000	115-60-1	7.5	9.3	15
	A/C	C	LT1010CR	9,800	115-60-1	10.2	12.3	15
	A/C	C	LT1030CR	10,000	230/208-60-1	5.2	6.2	15
	A/C	C	LT1210CR	11,500	115-60-1	12.1	14.3	15
	A/C	C	LT1230CR	11,700	230/208-60-1	6.2	7.1	15
	A/C	C	LT1430CR	13,200	230/208-60-1	7.6	8.5	15
H/C		C H	LT1030HR	10,000	230/208-60-1	5.2	19.0	20
		C H	LT1230HR	11,700	230/208-60-1	6.2	19.3	20

NOTE: Please see local electrical codes for proper wire specifications.

*Minimum Circuit Ampacity
**Maximum Overcurrent Protection

Optional Accessories



Wall Sleeve
AXSVA1A-1



Stamped Aluminum Grille
AXRGALA01



Architectural Grille
AXAGALA01A

Sleeve Dimensions of Major Brands (inches)	Friedrich USC Sleeve	GE	Amana	Whirlpool Fedders	Frigidaire
Height	15 17/32	15 5/8	15 5/8	15 3/4	15 7/16
Width	25 7/8	26	26	26 3/4	25 7/8
Depth	16 23/32	16 7/8	16 7/8	15	18

PACKAGED TERMINAL AIR CONDITIONERS

Ultra quiet operation is the hallmark of LG's new line of PTAC products. Low decibel levels and outstanding sound prevention rating make this your best choice for a quiet environment. And with efficiency ratings up to 12.7 EER, these units are also your energy efficient choice.

Other features include standard connections for remote thermostat and front desk controls. Gold Fin™ technology protects the unit from the corrosive effects of outside air and extends the operating life of PTAC models. And the industry standard size makes installation easy and economical.



7,000 – 15,000 BTUs



PACKAGED TERMINAL AIR CONDITIONERS

7,000-15,000 BTUs

- Ⓒ **LP070CED** (H/C Model)
7,600 BTUs **Cooling & Heating**
- LP090CED** (H/C Model)
9,000 BTUs **Cooling & Heating**
- LP120CED** (H/C Model)
11,800 BTUs **Cooling & Heating**
- LP150CED** (H/C Model)
14,300 BTUs **Cooling & Heating**



Standard Features:

- Gold Fin™ anti-corrosion treatment
- Cooling mode
- Heating mode
- Fan mode

- Energy saver mode
- Auto restart
- Wall thermostat temperature control
- Front desk control connection

- Dip switch settings
- Evaporator frost control
- Temperature display on unit
- Freeze room protection

System Includes:

- Wall unit
- Installation manual

System Model #	LP070CED	LP090CED	LP120CED	LP150CED
Performance				
Capacity (BTUs)	Ⓒ 7,600/7,400	9,000/8,800	11,800/11,500	14,300/14,100
EER	12.5	11.7	11.2	10.0
Air Circulation (CFM H/L)	335/300	335/300	390/355	390/355
Fan Speeds (Cooling/Heating/Fan)	2/2/2	2/2/2	2/2/2	2/2/2
Dehumidification (pts/hr)	2.0	2.6	3.3	4.4
Indoor dB(A)*	45/43	45/43	49/47	49/47
Outdoor dB(A)*	60/58	60/58	63/61	63/61
STC	30	30	30	30
Electrical				
Rated Voltage	230/208-60-1	230/208-60-1	230/208-60-1	230/208-60-1
Electric Heater (kW)	2.5	3.5	3.5	3.5
Dimensions				
W x H x D (inches)	42 x 16 x 19 7/8	42 x 16 x 19 7/8	42 x 16 x 19 7/8	42 x 16 x 19 7/8
Weight (lbs.)	90.8	95.2	99.6	104.1
Thermostat Range				
Cooling/Heating (°F)**	54-86/54-86	54-86/54-86	54-86/54-86	54-86/54-86

*LG verified sound rating

**Adjustable by temperature limiting with DIP switches on the unit

7,000-15,000 BTUs



- C H LP070HED** (Heat Pump Model)
7,600 BTUs **Cooling & Heating**
- LP090HED** (Heat Pump Model)
9,100 BTUs **Cooling & Heating**
- LP120HED** (Heat Pump Model)
12,100 BTUs **Cooling & Heating**
- LP150HED** (Heat Pump Model)
14,300 BTUs **Cooling & Heating**

Standard Features:

- Cooling mode
- Heating mode
- Fan mode
- Energy saver mode
- Auto restart

- Gold Fin™ anti-corrosion treatment
- Wall thermostat temperature control
- Front desk control connection
- Emergency heat

- Dip switch settings
- Evaporator frost control
- Defrost control
- Freeze room protection
- Temperature display on unit

System Includes:

- Wall unit
- Installation manual

System Model #	LP070HED	LP090HED	LP120HED	LP150HED
Performance				
Capacity (BTUs)	C 7,600/7,300 H 6,400/6,200	9,100/8,900 8,200/8,000	12,100/11,800 10,900/10,700	14,300/14,100 13,500/13,300
EER	12.5	11.7	11.1	9.8
Air Circulation (CFM H/L)	335/300	335/300	390/355	390/355
Fan Speeds (Cooling/Heating/Fan)	2/2/2	2/2/2	2/2/2	2/2/2
Dehumidification (pts/hr)	2.0	2.6	3.3	4.4
Indoor dB(A)*	45/43	45/43	49/47	49/47
Outdoor dB(A)*	60/58	60/58	63/61	63/61
STC	30	30	30	30
Electrical				
Rated Voltage	230/208-60-1	230/208-60-1	230/208-60-1	230/208-60-1
Electric Heater (kW)	2.5	3.5	3.5	3.5
Dimensions				
W x H x D (inches)	42 x 16 x 19 7/8	42 x 16 x 19 7/8	42 x 16 x 19 7/8	42 x 16 x 19 7/8
Weight (lbs.)	93.0	97.4	101.9	106.3
Thermostat Range				
Cooling/Heating (°F)**	54-86/54-86	54-86/54-86	54-86/54-86	54-86/54-86

*LG verified sound rating

**Adjustable by temperature limiting with DIP switches on the unit



1-year full system warranty, parts and labor. Warranty on unit for years 2-5: parts only, exclusive of the refrigeration system. Warranty on sealed refrigeration system: 5 year, parts and labor. See page 38 for electrical specifications and accessories.

PACKAGED TERMINAL AIR CONDITIONERS

ACCESSORIES

Architectural Grilles



42" Wall Sleeve
AYSVB01A



Aluminum
AYAGALA01A



Stamped Aluminum Grille
AYRGALA01



Dark Bronze
AYAGALB01A



Soft Dove
AYAGALC01A

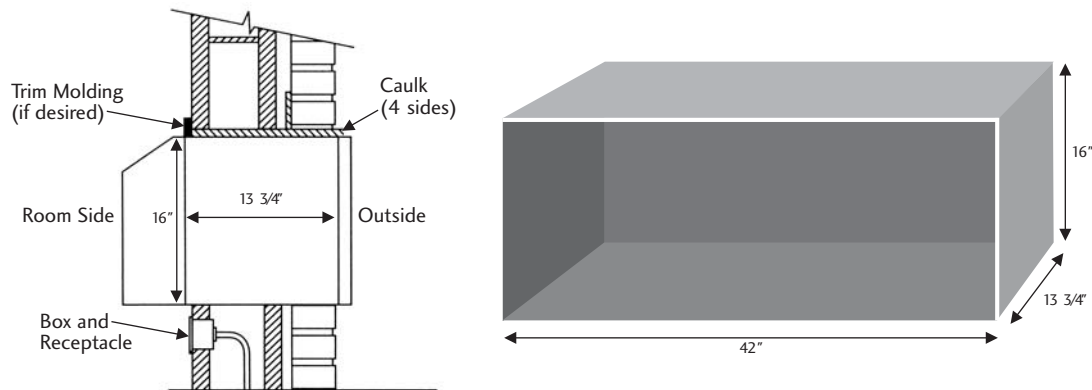
Description	Model #
Sub Base 20A 230/208V	AYSB1101A
Sub Base 30A 230/208V	AYSB2101A
Control Panel Key Lock	AYCP101
Remote Escutcheon Kit - Ten Pack	AYRE110
Wired Wall Thermostat	PYRCUCA0A
Wireless Thermostat	PYRCUCC0A
Current Tap (for wireless thermostat)	PYRCUCC1A
Replacement Filter - 10 Pack	AYFT110
Hard Wire Kit	AYHW101
Condensate Drain Kit	AYDR101
Fuse Holder Kit (230V, 30A)	AYFH1401
Leveling Legs	AYLL101
Condensate Disposal Kit 230/208V	AYCD2101

PACKAGED TERMINAL AIR CONDITIONERS ELECTRICAL & INSTALLATION • QUICK REFERENCE

Electrical Specifications								
Type		Model #	BTUs	Voltage	Rated Amps	MCA*	MOP**	
PTAC	A/C	LP070CED	7,600	230/208 - 60-1	2.7/2.9	11.3	20	
	A/C	LP090CED	9,000	230/208 - 60-1	3.6/3.9	13.2	20	
	A/C	LP120CED	11,800	230/208 - 60-1	4.8/5.2	13.2	20	
	A/C	LP150CED	14,300	230/208 - 60-1	6.5/7.1	13.2	20	
PTHP	H/C	LP070HED	7,600	230/208 - 60-1	2.7/2.9	11.3	20	
	H/C	LP090HED	9,100	230/208 - 60-1	3.6/3.9	13.2	20	
	H/C	LP120HED	12,100	230/208 - 60-1	5.0/5.4	13.2	20	
	H/C	LP150HED	14,300	230/208 - 60-1	6.7/7.3	13.2	20	

NOTE: Please see local electrical codes for proper wire specifications.

*Minimum Circuit Ampacity
**Maximum Overcurrent Protection



Free Manuals Download Website

<http://myh66.com>

<http://usermanuals.us>

<http://www.somanuals.com>

<http://www.4manuals.cc>

<http://www.manual-lib.com>

<http://www.404manual.com>

<http://www.luxmanual.com>

<http://aubethermostatmanual.com>

Golf course search by state

<http://golfingnear.com>

Email search by domain

<http://emailbydomain.com>

Auto manuals search

<http://auto.somanuals.com>

TV manuals search

<http://tv.somanuals.com>