



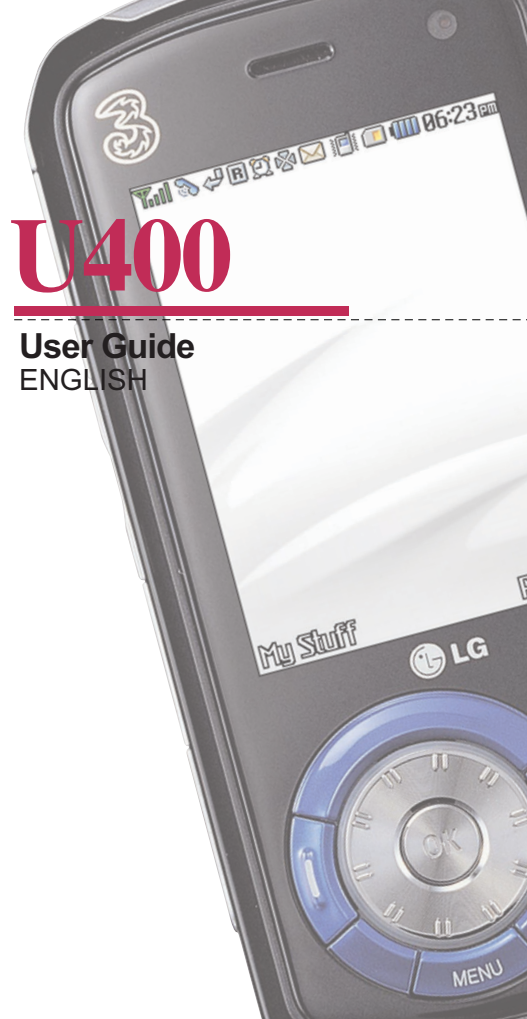
U400



CE 0889

U400

User Guide
ENGLISH

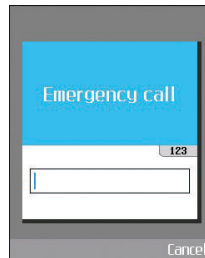


Making Emergency call when no USIM card present in the handset:

1. Press the right Emergency soft key



2. Enter emergency number 000 or 112



3. Press OK or SEND key to activate Emergency call.

MANUFACTURER'S WARRANTY

1. WHAT THIS WARRANTY COVERS:

LG offers you a warranty that the enclosed Product and its enclosed accessories will be free from defects in material and workmanship according to the following terms and conditions:

- (1) The warranty for the Product is for ONE (1) year beginning on the date of purchase of the Product.
- (2) The warranty extends only to the original consumer purchaser of the Product ("Customer") and is not assignable or transferable to any subsequent customer. LG offers a warranty for genuine LG battery packs, extending SIX (6) months from the date of purchase.
- (3) This warranty is good only to the Customer during the warranty period as long as it is in AUSTRALIA.
- (4) During the warranty period, any defective LG Product or part will be repaired or replaced by LG or its authorised service centre, at LG's option, with new or factory rebuilt replacement items. LG or the authorised service centre will return the Product to the Customer in working condition. No charge for either parts or labour in repair or replacement of the Product will be incurred by the Customer. If parts, boards or equipment are replaced, they shall become the property of LG.
- (5) Upon request from LG, the Customer must provide LG with proof of the date of purchase.
- (6) The Customer will bear the cost of transporting, delivering and handling the Product to and from LG or its authorised service centre.
- (7) The benefits available from this warranty are in addition to all applicable statutory rights.

2. WHAT THIS WARRANTY DOES NOT COVER:

- (1) Defects or damage resulting from use of the Product in other than its normal and customary manner.
- (2) Defects or damage from abnormal use, abnormal conditions, improper storage, exposure to moisture or dampness, unauthorised modifications, unauthorised connections, unauthorised repair, misuse, neglect, abuse, accident, alteration, improper installation, or other acts which are not the fault of LG, including damage caused by shipping, blown fuses, spills of food or liquid.
- (3) Breakage or damage to antennas, unless caused directly by defects in material or workmanship.
- (4) If the Customer does not notify LG of the alleged defect or malfunction of the Product during the applicable warranty period, the Customer shall have no coverage or benefits under this warranty.
- (5) Products which have had the serial number removed or made illegible.
- (6) If the battery short circuits or the seals of the battery are broken or show evidence of tampering, or the battery was used in equipment in a manner other than that which has been specified, the Customer shall have no coverage or benefits under this warranty.

- (7) Damage resulting from use of non-LG approved accessories.
- (8) All plastic surfaces and all other externally exposed parts that are scratched or damaged due to normal use.
- (9) Products operated outside published maximum ratings.
- (10) Products used or obtained in a rental program.
- (11) Consumables (such as fuses.)
- (12) Defects or damage resulting from breakage of or tampering with the LCD screen.
- (13) Where applicable, Products that have been subject to an unauthorised removal or deactivation of the network operator lock function.

3. STATEMENT

Except for those terms that cannot by law be excluded, all terms other than those expressly contained in this warranty statement are excluded. To the extent permitted by law, LG excludes all liability (whether in contract, tort or otherwise) for any consequential, special, incidental or indirect loss or damage including loss of profit, loss or impairment of privacy of conversations, work stoppage or loss or impairment of data arising out of the use or inability to use the Product.

4. HOW TO GET WARRANTY SERVICE:

To obtain information regarding warranty service, please call the following telephone number from anywhere in AUSTRALIA:

LG Electronics Australia Pty Ltd

2 Wonderland Drive

Eastern Creek NSW 2766

PO Box 212

HORSLEY PARK NSW 2175

Tel: 1800-638-080 Fax: 02-8805-4201



LG Electronics Australia Pty Ltd.

Welcome to your LG U400 handset

User guides can be daunting things, can't they?
But don't worry, we've made this one as
simple as possible.



U400 User Guide



Your guide is designed to do two things.

First, there's an explanation on how to use your new LG U400, so finding your way around the handset will soon become second nature.

Then there's an introduction to the wide range of services offered, to make sure you get the best from them. If all you want to do is power up and get going, that's fine.

Download from Www.Somanuals.com. All Manuals Search And Download.

Table of Contents

Emergency Services and Safety Precautions10	Security code (4 to 8 digits).....29
Getting Started 14	Barring Password29
Using the Battery, Charger and USIM Card 14	Making and Answering calls29
Installing the Battery..... 14	Making and Answering a video call.....29
Removing the Battery..... 15	Making a voice/video call 30
Inserting the memory card 16	Making a voice/video call from Contacts 30
Removing the memory card..... 17	Making International Calls..... 30
Charging the Battery 18	Adjusting the Volume 31
Disconnecting the Charger..... 19	Answering a Call..... 31
Battery Information and Care..... 19	Signal Strength..... 31
Memory Information and Care 20	Entering Text 31
Installing the USIM card 21	Changing the Text Input Mode..... 32
Getting to know your LG U400 22	Using the T9 Mode 32
Familiarise yourself with its features 22	Using the ABC Mode..... 33
Your handset's home screen 24	Using the 123 (Number) Mode 33
Display Information 25	Using the Symbol Mode..... 33
Your handset's keys and navigation 26	Character chart..... 34
Function of keys when phone is idle 27	
General Functions 28	Menu tree 35
Turning your handset on 28	Screen 42
Turning your handset off 28	Screen theme 42
Access Codes 28	Home screen 42
PIN code (4 to 8 digits)..... 28	Outgoing call 42
PIN2 code (4 to 8 digits)..... 28	Switch on 42
PUK code (4 to 8 digits) 28	Switch off 42
PUK2 code (4 to 8 digits) 28	Menu style 42
	Font 42
	Backlight 43

Greeting message	43	Format external memory	54
Profiles	46	Handset information	54
Settings	50	Reset settings	54
Date & Time	50	Browser	56
Time.....	50	Home	56
Date	50	Bookmarks	57
Auto update date/time.....	50	Connect.....	57
Daylight saving	51	Send	57
Auto key lock	51	Add new	57
Network	51	Edit	57
Network selection	51	Mark/Unmark.....	57
Location mode	51	Delete	57
Preferred list	51	Saved pages	57
Flight mode	52	Go to URL	57
Access points	52	Security	58
Security	52	Settings	58
PIN code request	52	Profiles.....	58
Handset lock	53	Character encoding	58
Change codes	53	Scrolling control	58
Language	54	Show Image.....	58
Memory status	54	Cache	59
Common memory	54	Cookies	59
Reserved memory	54	Clear cache	59
USIM memory	54	Clear cookies.....	59
External memory	54	Messages	62

Table of Contents

Create new message	62	Multimedia	82
Text message	62	Video camera	82
Multimedia message	62	Camera	82
Email	65	Voice recorder	83
Inbox	66	Melody composer	84
Mailbox	67	DJ-ing	84
Drafts	68	Settings	84
Outbox	68		
Sent items	68	Contacts	86
Templates	69	Add new	86
Emoticons	69	Search	86
Settings	70	Speed dials	86
Text message	70	Groups	87
Multimedia message	70	Service dial numbers	87
Email	71	Own number	87
Videomail	72	Settings	87
Voicemail	72	Display data.....	87
ExpressLink	72	Show image/avatar	87
Info. Service.....	72	Copy all	87
		Move all	88
		Clear contacts	88
My stuff	74		
Images	74	Games & Apps	90
Videos	75	My games & apps	90
Sounds	77	Download games & apps	90
Applications	79	Settings	90
Flash contents	79		
External memory	80	Organiser	94
Audio/ Video play lists	80		

Calendar	94
To do	96
To do Enquiry	96
Adding To do Items	97
To do Delete	97
Finished/Not finished	97
Mark/Unmark	97
To do Detailed View	97
Memo	98
Secret memo	98
Date finder	99
Dateulator	99
Settings	100
Calendar	100
Memory info... ..	100
Clear all.....	100
Tools	102
Quick menu	102
Alarm clock	103
Connectivity	104
Bluetooth	104
Server synchronisation.....	105
Calculator	106
World time	106
Unit converter	107
Currency	107

Surface	107
Length	108
Weight	108
Temperature	108
Volume.....	109
Velocity	109
Calling	112
Video calls	112
My picture size	112
My picture position	112
Hide my picture	112
Mirror	112
Substitute picture	112
Call history	112
Missed calls.....	113
Received calls	113
Dialled calls	113
All calls	113
Call duration	113
Last call	113
Received calls	113
Dialled calls	114
All calls	114
Call divert	114

Table of Contents

Voice calls	114
Video calls	114
Deactivate all	115
Call barring	115
Voice calls	115
Video calls	115
Deactivate all.	116
Fixed dial numbers	116
Call waiting	116
Settings	116
Call reject.....	116
Send my number	117
Auto redial	117
Answer mode	117
Minute minder	117
BT answer mode	117
Troubleshooting	120
Accessories	122
Glossary	124
Index	128



Guidelines for safe and efficient use

Read these simple guidelines. Breaking the rules may be dangerous or illegal.
Further detailed information is given in this manual.

Download from [Www.Somanuals.com](http://www.somanuals.com). All Manuals Search And Download.

Emergency Services and Safety Precautions

- Do not allow battery to come into direct contact with an electrical outlet or car cigarette lighter socket
- Do not pierce the battery with sharp objects
- Do not drop or subject the phone to physical shock
- When the battery has reached the end of its life, dispose of it in accordance with environmental regulations. Do not dispose of your battery in household rubbish.
- Do not immerse in water
- Do not disassemble or modify the battery
- Stop using the battery if abnormal heat, odour, discolouration, deformation, or abnormal conditions are detected during use, charge, or storage
- Do not use damaged or deformed batteries. In the unlikely event of a battery leak, take care to keep the battery discharge away from your eyes or skin.
- If the leakage does come into contact with the eyes or skin, please wash thoroughly in clean water and consult with a doctor
- The earpiece may become warm during normal use. The handset itself may become warm while the battery is being charged
- Use a damp or anti-static cloth to clean the handset. Do not use a dry cloth or electrostatically charged cloth. Do not use chemical or abrasive cleaners as these could damage the phone
- Retain the cardboard packing supplied with this handset. It should be used if the phone has to be returned for service. This packaging can be recycled when no longer required
- Remember to make backup copies of all important data on your handset
- Use accessories, such as earphones and headsets, with caution. Ensure that cables are tucked away safely and do not touch the antenna unnecessarily.

Aircraft safety

In accordance with CAA regulations, you must switch off your phone on aircraft. Mobile phone signals can interfere with aircraft equipment.

Follow the instructions given by airline staff at all times

Hospital safety

Switch off your phone in areas where the use of handsets is prohibited. Follow the instructions given by the respective medical facility regarding the use of handsets on their premises

General safety

- Observe 'Turn off 2-way radio' signs, such as those near petrol stations, chemicals or explosives, and turn off your handset
- Do not allow children to play with the handset, charger or batteries
- Do not use the handset where blasting is in progress
- The operation of some medical electronic devices, such as hearing aids and pacemakers, may be affected if a handset is used next to them. Observe any warning signs and the manufacturer's recommendations

- The phone is out of Three network coverage, 'Emergency Calls Only' will display on the screen and at this time you can call 000 or 112 and you will be connected via any available network to an operator who will connect you to either the Police, Ambulance and Fire Services.

Avoid damage to your hearing

- Damage to your hearing can occur if you are exposed to loud sound for long periods of time. We therefore recommend that you do not turn on or off the handset close to your ear. We also recommend that music and call volumes are set to a reasonable level.
- If you are listening to music whilst out and about, please ensure that the volume is at a reasonable level so that you are aware of your surroundings. This is particularly imperative when attempting to cross the street.

Road safety

- You MUST exercise the proper control of your vehicle at all times. Give your full attention to driving

Emergency Services and Safety Precautions

- Observe all laws in respect to the use of mobile phones when driving
- Pull off the road and park before making or answering a call where it is safe to do so. UK law prohibits the use of hand held mobile phones when driving
- You MUST NOT stop on the hard shoulder of a motorway to answer or make a call, except in an emergency
- Switch off your handset at refueling points and petrol stations, even if you are not refueling your own car
- Do not store or carry flammable or explosive materials near your handset
- Electronic vehicle systems, such as anti-lock brakes, speed control and fuel injection systems are not normally affected by radio transmissions
- The manufacturers of such equipment can advise if it is adequately shielded from radio transmissions. Consult your dealer and do not switch on the handset until it has been checked by qualified installers

Vehicles equipped with an air bag

An air bag inflates with great force. Do not place objects, including either installed or portable wireless equipment, in the area over the air bag or in the air bag deployment area. If in-vehicle wireless equipment is improperly installed and the air bag inflates, serious injury could result

Third party equipment

The use of third party equipment, cables or accessories, not made or authorised by LG, may invalidate the warranty of your handset and also adversely affect the handset's safety or operation

Service

The handset, batteries and charger contain no user-serviceable parts. LG recommend that your LG U400 handset is serviced or repaired by an LG authorized service centre

Efficient use

The handset has an antenna. For optimum performance with minimum power consumption,

please do not cover the antenna area with your hand. Covering the antenna affects call quality and may cause the handset to operate at a higher power level than required. This decreases talk and standby time.

Radio frequency energy

Your handset is a low-power radio transmitter and receiver. When it is turned on, it receives and transmits radio frequency (RF) energy (radio waves). The system that handles the call (the network) controls the power level at which the handset transmits.

- Further detailed information is given in this manual.

Exposure to radio frequency energy

Radio wave exposure and Specific Absorption Rate (SAR) information

- This handset model U400 has been designed to comply with safety, requirements for exposure to radio waves. This requirement is based on scientific guidelines that include

safety margins designed to assure the safety of all persons, regardless of age and health

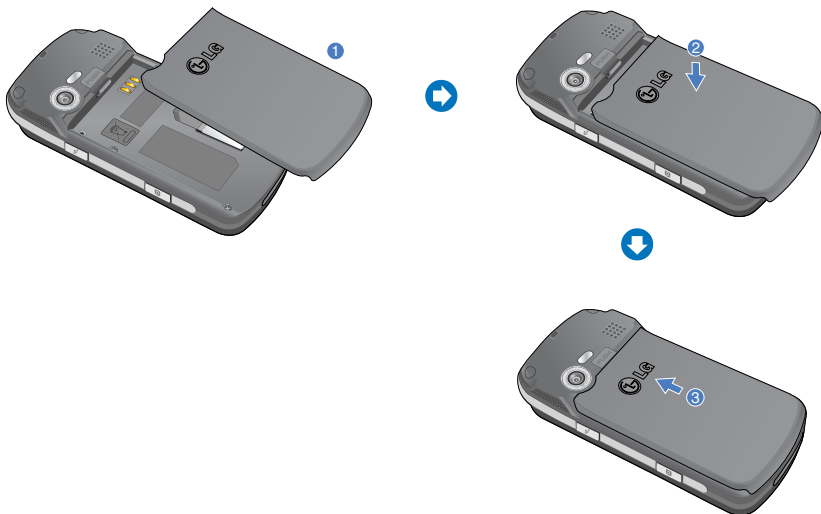
- The radio wave exposure guidelines employ a unit of measurement known as the Specific Absorption Rate, or SAR. Tests for SAR are conducted using a standardised method with the phone transmitting at its highest certified power level in all used frequency bands
- While there may be differences between the SAR levels of various LG phone models, they are all designed to meet the relevant guidelines for exposure to radio waves
- The SAR limit recommended by the International Commission on Non-ionizing Radiation Protection (ICNIRP), is 2W/kg averaged over ten (10) gramme of tissue
- The highest SAR value for this model phone tested by DASY3 for use at the ear is 0.772 W/kg (10g)
- The SAR limit recommended by the Institute of Electrical and Electronics Engineers (IEEE), which is 1.6 W/kg averaged over one (1) gramme of tissue (for example USA, Canada, Australia and Taiwan).

Getting Started

Using the Battery, Charger and USIM Card

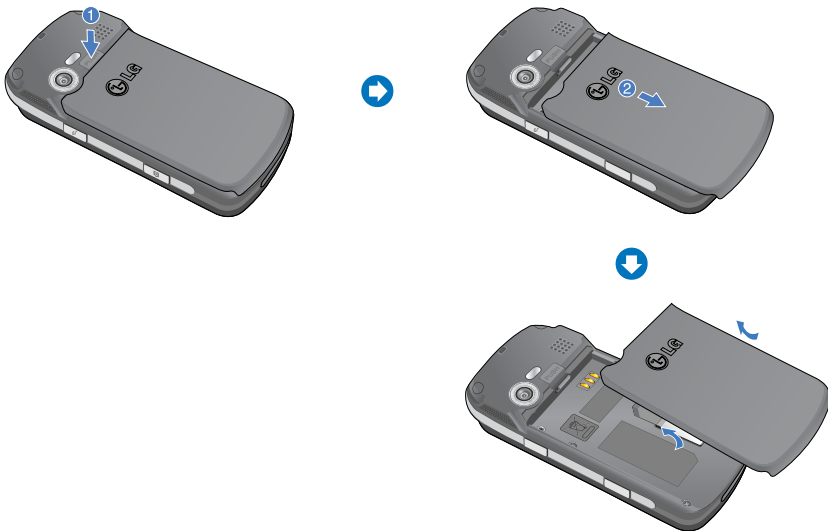
Installing the Battery

To install the battery, insert the bottom of the battery (1) into the opening on the back of the phone, making sure that the references on the videophone (2) coincide. Push the battery (3) until the battery latch on the back of the videophone (3) clicks.



Removing the Battery

Turn the power off. (If power is left on, there is a chance you could lose the stored telephone numbers and messages.) Press the latches ① and open the battery. ② Then remove the battery.



Getting Started

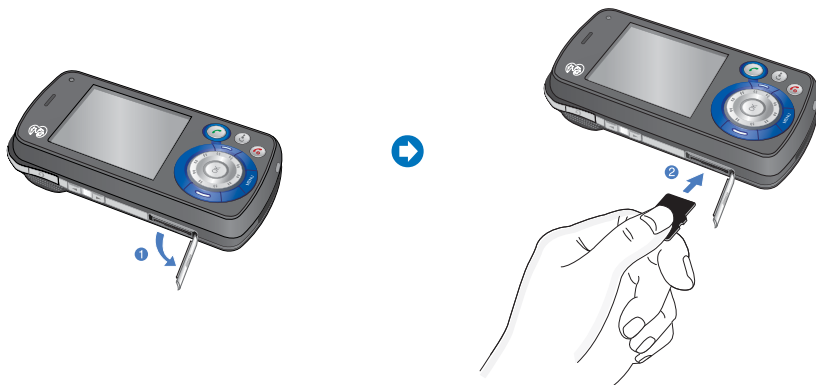
Inserting the memory card

Insert the memory card into the slot until the memory card is fully inserted into the slot, as shown in the figure below:

- ① Open the memory card slot and
- ② insert the memory card in it

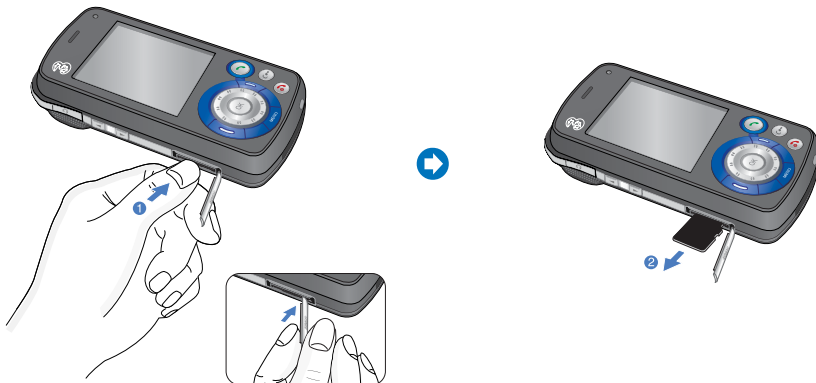
Note

The gold connectors must be face down and inserted first into the memory card slot.



Removing the memory card

1. Push in memory card with the tip of your finger or the rubber cap into the slot.
2. Carefully pull the memory card out of slot.



Getting Started

If the battery is fully discharged it will take sometime(under 30 minutes) to charge the battery to minimum operating level. When the red light is on, the handset can not be powered on. The red light will be turned off if the battery is charged to minimum operating level.

Warning

You can make video call with charger connected.

But if the battery capacity is under 10% the battery can be discharged when you use video call even though the charger is connected.

Charging the Battery

To use the charger provided with your phone:

1. With the battery in position on the phone, connect the lead from the charger to the side of the phone. Check that the arrow on the lead connector is facing towards the front of the phone.

2. Connect the charger to a standard AC wall outlet. Only use the charger that comes included with the package.



Warning

Do not force the connector as this may damage the phone and/or the charger.

Disconnecting the Charger

When charging is finished, disconnect the charger from the power outlet and from the phone by pressing on the grey tabs on both sides of the connector while pulling the connector out.



Notice

The battery delivered with your phone has to be fully charged before using it. Do not remove the battery or the USIM card while charging.

If your phone is being charged, the display will show the charging status.

If the battery fails to charge completely:

After turning the phone on and off, please attempt to recharge the battery.

After detaching and reattaching the battery, please attempt to recharge the battery.

Battery Information and Care

1. Never use an unapproved battery since this could damage the phone and / or battery and could cause the battery to explode.
2. The battery does not need to be fully discharged before recharging.
3. Use only LG approved chargers specific to your phone model since they are designed to maximise battery life.
4. Do not disassemble or short-circuit the battery.
5. Keep the battery's metal contacts clean.
6. Replace the battery when it no longer provides acceptable performance. The battery can be recharged several hundred times before replacement.

Getting Started

7. Recharge the battery after long periods of non-use to maximise battery life.
8. Do not expose the battery charger to direct sunlight or use it in areas of high humidity such as a bathroom.
9. Battery life will decrease if exposed to extremely hot or cold temperatures.
10. Battery life will vary due to usage patterns and environmental conditions.
11. The use of extended backlighting, Browser, and data connectivity kits affect battery life and talk/standby time.
4. When setting the theme of the idle screen, do not set the theme stored on the external memory directly to the idle screen, but only after copying it to the phone memory.
5. When setting pictures or photos stored on the external memory as the main theme, please perform the normal turning off procedure before removing external memory.

Memory Information and Care

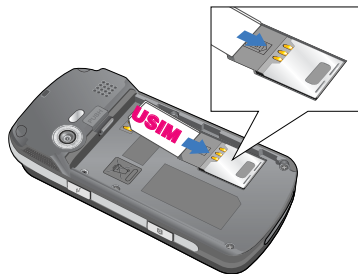
1. Please be very careful to turn off the power before removing the battery while the phone or the external memory is being used.
2. Do not remove memory while listening to music or displaying pictures stored on the external memory.
3. When formatting on the PC, format on FAT types. The external memory only supports FAT (FAT12, FAT 16) format and not FAT32.

Installing the USIM card

Your USIM card contains your phone number, service details and contacts and must be inserted into your handset.

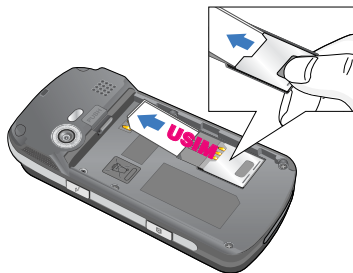
If your USIM card is removed then your handset becomes unusable until a valid one is inserted. Always disconnect the charger and other accessories from your handset before inserting and removing your USIM card.

Your USIM card may only be used in handsets which are enabled for 3 services. Any attempt to use the USIM card in other handsets may result in serious damage to the handset and may prevent you from being able to use it, including the making of emergency calls.



Notice

When you need to remove the USIM card, slide it towards the top of the phone and take it out of the holder.



Notice

Before installing always make sure that the phone is switched off and remove the battery. The metal contact of the USIM card can be easily damaged by scratches. Pay special attention to the USIM card while handling and installing. Follow the instructions supplied with the USIM card.

Getting to know your LG U400

Familiarise yourself with its features



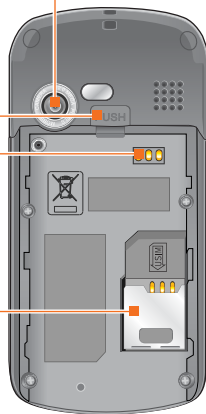
Camera

Battery lock

Battery terminals

USIM card socket

Cable connector/
Battery charging connector



Battery

Getting to know your LG U400

Your handset's home screen

Your handset's home screen is divided into three basic displays: the icon indicator bar; a central window that includes the home screen; and the prompt bar. Each of these is described below:



The icon indicator bar

The icon indicator bar shows what operations are taking place and reminds you of battery and signal strength. This appears through all activities. The table on page 25 gives a brief explanation of the icons and their function.

The home screen

The central window of your start screen displays an image of your choice, when in use, this screen will display all of your functions and services.





















The prompt bar

The prompt bar displays in the soft boxes. These are activated by pressing the appropriate soft key under each one.

Display Information

The table below describes various display indicators or icons that appear on the phone's display screen.

On-Screen Icons

Icon	Description	Icon	Description
	Battery level - indicates the amount of power in your battery. The greater the amount of solid colour the greater the power.		No-service area - indicates you are in the no-service area.
	Call diverting - indicates call divert option has been selected.		Flight mode- indicates that Flight mode has been activated.
	Call reject - indicates call reject option has been selected.		Roaming service - indicates that you are using a roaming service.
	Voice message - indicates when you have a new voice message.(This symbol may not appear in your 3 region)		ExpressLink message - indicates that there is new ExpressLink content.
	Text - indicates when you have a new text message.		Indicates the Bluetooth connection is activated.
	Multimedia - indicates when you have a new Multimedia message.		Alarm - indicates an Alarm.
	3G network - indicates whether you are in the 3 video service area.		Normal - indicates the General profile is activated
	When you leave the 3 video service area, your handset roams onto the voice & picture network or when abroad onto another network(2G/3G)		Silent - indicates the silent menu in Profile.
	2G network - indicates the strength of your handset's connection with a 2G network.		Vibrate only - indicates whether the vibrate function is on or off.
			Headset - indicates the headset menu in Profile.
			Outdoor - Indicates the loud profile is activated.

Getting to know your LG U400

Your handset's keys and navigation



(1) The Menu key

This key takes you to the main menu from any screen.

(2) The navigation key

Use for quick access to phone functions.

(3) The OK key

The button in the centre of the Navigation key allows you to select objects on the screen. Once you have scrolled to your desired choice use the OK key to select it. This function can be used in the majority of screens.

(4) The Send key

This key is used to make and answer voice calls.

(5) The Clear/Back key

This key has two functions. It will take you back to your previous screen and when in a text entry screen, it acts as a delete key.

This key takes you back to the previous screen.

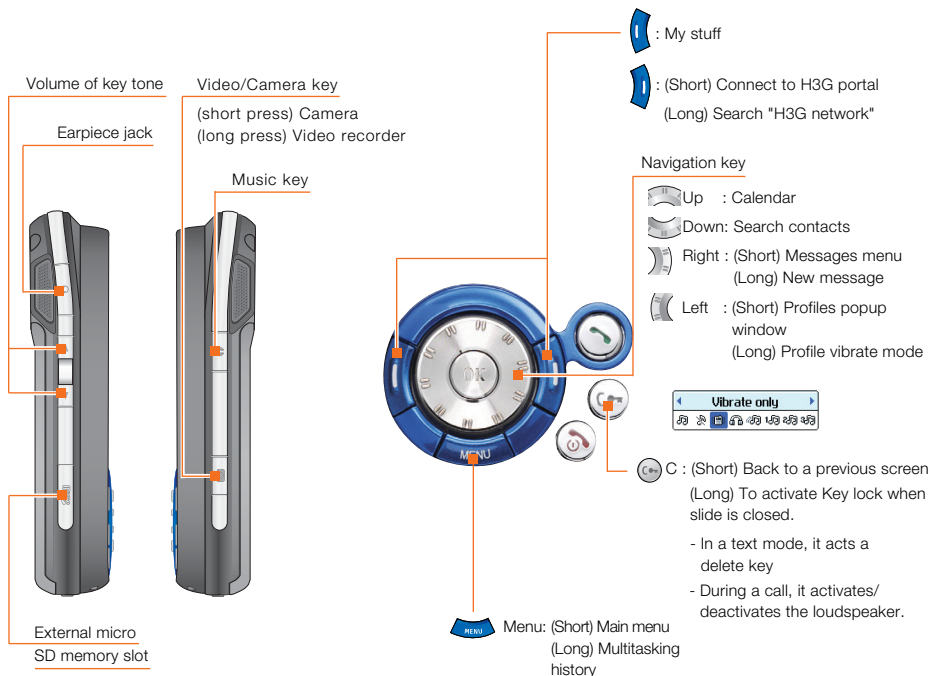
(6) The End key (On/Off)

This key is used to end calls and close down applications.

(7) The soft keys

The left and right soft keys activate the prompts that appear in the soft boxes directly above them. These prompts change according to the screen content.


Function of keys when phone is idle



General Functions

Turning your handset on

Ensure that your USIM card is in your handset and the battery is charged.

Press the  key.

Enter the USIM PIN code that was supplied with your USIM card if PIN code setting is on.

After a few seconds you will be registered on the network.

Turning your handset off

Press and hold the  key until power is off.

There may be some delay while the handset powers down.

Do not re-power the handset during this time.

Access Codes

You can use the access codes described in this section to avoid unauthorised use of your phone. The access codes (except PUK and PUK2 codes) can be changed by using the **Change codes** feature [Menu 3.6.3].

PIN code (4 to 8 digits)

The PIN (Personal Identification Number) code protects your USIM card against unauthorised use. The PIN code is usually supplied with the USIM card. When the PIN Code Request is set to Enable, your phone will request the PIN code every time it is switched on. When the PIN Code Request is set to Disable, your phone connects to the network directly without the PIN code.

PIN2 code (4 to 8 digits)

The PIN2 code, supplied with some USIM cards, is required to access functions such as Fixed Dial Number. These functions are only available if supported by your USIM card.

PUK code (4 to 8 digits)

The PUK (PIN Unblocking Key) code is required to unlock a blocked PIN code. Contact 3 Customer Services for the code.

PUK2 code (4 to 8 digits)

The PUK2 code, is required to unlock a blocked PIN2 code. Contact 3 Customer Services.

Security code (4 to 8 digits)

The security code protects the unauthorised use of your phone. The default security code is set to '0000' and the security code is required to delete all phone entries and to restore the handset to factory setting.

Barring Password

The barring password is required when you use the call barring function. The password is obtained from the 3 Customer Services when you subscribe to this function.

Making and Answering calls

You can keep the calling status when the slide is closed during a call.

Making and Answering a video call



You can make/answer a video call to a 3G video phone the other party must have a 3G video phone and be in a video service area.

To make/answer a video call, do the following.



1. Input the phone number using the keypad, or select the phone number from the calls made/received lists.

Note

To correct mistakes, press the  key briefly to delete the last number, or press and hold the  key to delete all numbers.

2. If you do not want to use the speakerphone, ensure you have the headset plugged in.


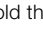



General Functions

Note


The video call may take some time to connect. Please be patient. The connection time will also depend on how quickly the other party answers the call. While the video call is connecting, you will see your own images; after the other party has answered, their image will be displayed on screen.

3. Press the end key to finish the call, or close the handset.

Making a voice/video call

1. Make sure your handset is powered on.
2. Enter the number including the full area code.
 - To delete a digit press the  key.
 - To delete all digits press and hold the  key.
3. Press the  key to make a voice call. Press the  [Video call] key to make a video call.
4. Press the  key to finish the call, or close the handset.



Note



To activate the speakerphone during a Voice call, you have to press and hold the  key for at least 2 secs.

Making a voice/video call from Contacts



It is easy to call anyone whose number you have stored in your Contacts.

Press the down navigation key to access contact list.

Scroll to your chosen contact and press the  . To make a voice call press the  key.

To make a video call press the  [Video call] key. Press the  key to finish the call.

Making International Calls




1. Press and hold the  key for the international prefix. The '+' character can be replaced with the international access code.
2. Enter the country code, area code, and the phone number.
3. Press the  key.

Adjusting the Volume

During a call, if you want to adjust the earpiece volume, use the side keys of the handset. In idle mode you can adjust the key tone volume using the side keys.


Answering a Call


When you receive a call, the phone rings and the flashing phone icon appears on the screen. If the caller can be identified, the caller's phone number (or name if stored in your Contacts) is displayed.

1. Open the slide and press the  key to answer an incoming call.
If the **Press any key** menu option has been set to  key, **Press any key** will answer a call except for the  key.

Notice

- To reject an incoming call, press and hold down the side key on the left side twice of the handset without opening the slide.


- If the **Open slide** menu option ((Menu #.9.4) is simply by opening) is on , you can answer the call simply by opening the slide.

2. End the call by closing the handset or pressing the  key.

Notice

You can answer a call while using the Contacts or other menu features.

Signal Strength

If you are inside a building, being near a window may give you better reception. You can see the strength of your signal by the signal indicator see the strength () on your handset's display screen.







Entering Text

You can enter alphanumeric characters using the keypad.
For example, storing names in the Contacts, writing a message, creating a personal greeting or scheduling events in the calendar all require entering text.

General Functions



Following text input methods are available in the handset.


Changing the Text Input Mode

1. When you are in a field that allows characters to be entered, you will notice the text input mode indicator in the upper right corner of the display.
2. Short pressing the  key cycles between , , ,  and .

Using the T9 Mode

The T9 predictive text input mode allows you to enter words easily with a minimum number of key presses. As you press each key, the handset begins to display the characters that it thinks you are typing based on a built-in dictionary. As new letters are added, the word changes to reflect the most likely candidate from the dictionary.


1. When you are in the T9 predictive text input mode, start entering a word by pressing keys  to . Press one key per letter.



- The word changes as letters are typed - ignore what's on the screen until the word is typed completely.
- If the word is still incorrect after typing completely, press the  key once or more to cycle through the other word options.

Example

Press     to type Good

Press the  key to get Home

- If the desired word is missing from the word choices list, add it by using the ABC mode.
2. Enter the whole word before editing or deleting any keystrokes.
 3. Complete each word with a space by pressing the  key.




To delete letters, press the  key.
Press and hold down the  key to erase entire words.

Using the ABC Mode

Use the  to  keys to enter your text.

1. Press the key labeled with the required letter:

- Once for the first letter
- Twice for the second letter
- And so on

2. To insert a space, press the  key once. To delete letters, press the  key. Press and hold down the  key to clear the display.



Using the 123 (Number) Mode

The 123 Mode enables you to enter numbers in a text message (a telephone number, for example).

Press the keys corresponding to the required digits before manually switching back to the appropriate text entry mode.

Using the Symbol Mode

The symbol mode enables you to enter various symbols or special characters.

To enter a symbol, press the  key. Use the navigation and numeric keys to select the desired symbol and press the  key.



General Functions

Character chart

General text entry rules for use with the abc mode.

Use the keypad to enter letters, numbers, symbols, and other characters with the abc mode. Press the same key repeatedly to cycle through available characters.



If you do not press a key for 2 seconds, the character in the block cursor is accepted, and the cursor moves to the next position.

Notice

Refer to the table below for more information on the characters available using the keys.

Key	Characters in the Order Display	
	Lower case	Upper case
1	.,?!' " 1 - () @ / : _	.,?!' " 1 - () @ / : _
2	abc2âáãäåäåæç	ABC2ÁÂÃÄÅÄÅÆÇ
3	def3èéêë	DEF3ÉÊËË
4	ghi4íîï	GHI4ÍÎÏ
5	jkl5Ĺ	JKL5Ĺ
6	mno6ñóôõöøœ	MNO6ÑÓÔÕÖØŒ
7	pqr7ß\$	PQRS7ß\$
8	tuv8úûü	TUV8ÚÛÜ
9	wxyz9	WXYZ9
0	space0	space0

Menu tree

Your handset offers a set of functions that allow you to use and customise the handset. These functions are arranged in menus and sub-menus, accessed via the two soft keys marked left soft key  and right soft key .

Each menu and sub-menu allows you to view and alter the settings of a particular function. The roles of the soft keys vary according to the applications and services; the label on the bottom line of the display just above each key indicates its current role.



Press the left soft key to access the available My Stuff.

Press the right soft key to access the available Planet 3.

Menu tree

1. Screen (see page 42)

1.1 Screen theme

1.1.1 Home screen

1.1.2 Outgoing call

1.1.3 Switch on

1.1.4 Switch off

1.2 Menu style

1.3 Font

1.4 Backlight

1.5 Greeting message

2. Profiles (see page 46)

2.1 Normal

2.2 Silent

2.3 Vibrate Only

2.4 Headset

2.5 Outdoor

2.6 Customised 1

2.7 Customised 2

2.8 Customised 3

3. Settings (see page 50)

3.1 Date & Time

3.1.1 Time

3.1.2 Date

3.1.3 Auto update date/time

3.1.4 Daylight saving

3.2 Auto key lock

3.3 Network

3.3.1 Network selection

3.3.2 Location mode

3.3.3 Preferred list

3.4 Flight mode

3.5 Access points

3.6 Security

3.6.1 PIN code request

3.6.2 Handset lock

3.6.3 Change codes

3.7 Language

3.8 Memory status

3.9 Handset information

3.0 Reset settings

3.0.1 Clear memory

3.0.2 Default setting

4. Browser (see page 56)

4.1 Home

4.2 Bookmarks

4.3 Saved pages

4.4 Go to URL

4.4.1 Enter address

4.4.2 Recent pages

4.5 Security

4.5.1 Certificates

4.5.2 Session clear

4.6 Settings

4.6.1 Profiles

4.6.2 Character encoding

4.6.3 Scrolling control

4.6.4 Show Image

4.6.5 Cache

4.6.6 Cookies

4.6.7 Clear cache

4.6.8 Clear cookie

5. Messages (see page 62)

5.1 Create new message

5.1.1 Text message

5.1.2 Multimedia message

5.1.3 Email

5.2 Inbox

5.3 Mailbox

5.4 Drafts

5.5 Outbox

5.6 Sent items

5.7 Templates

5.8 Emoticons

5.9 Settings

5.9.1 Text message

5.9.2 Multimedia message

5.9.3 Email

5.9.4 Videomail

5.9.5 Voicemail

5.9.6 ExpressLink

5.9.7 Info. Service

6. My stuff (see page 74)

6.1 Images

6.2 Videos

6.3 Sounds

6.4 Applications

6.5 Flash contents

6.6 External memory

6.7 Audio play lists

6.8 Video play lists

7. Multimedia (see page 82)

7.1 Video camera

7.2 Camera

7.3 Voice recorder

7.4 Melody composer

7.5 DJ-ing

7.6 Settings

Menu tree

8. Contacts (see page 86)

- 8.1 Add new
- 8.2 Search
- 8.3 Speed dials
- 8.4 Groups
- 8.5 Service dial numbers
- 8.6 Own number
- 8.7 Settings
 - 8.7.1 Display data
 - 8.7.2 Show image/avatar
 - 8.7.3 Copy all
 - 8.7.4 Move all
 - 8.7.5 Clear contacts

*. Organiser (see page 94)

- *.1 Calendar
- *.2 To do
- *.3 Memo
- *.4 Secret memo
- *.5 Date finder
- *.6 Dateulator
- *.7 Settings
 - *.7.1 Calendar
 - *.7.2 Memory info.
 - *.7.3 Clear all

0. Tools (see page 102)

- 0.1 Quick menu
- 0.2 Alarm clock
- 0.3 Connectivity
 - 0.3.1 Bluetooth
 - 0.3.2 Server synchronisation
- 0.4 Calculator
- 0.5 World time
- 0.6 Unit converter

9. Games & Apps (see page 90)

- 9.1 My games & apps
- 9.2 Download games & apps
- 9.3 Settings

#. Calling (see page 112)

#.1 Video calls

#.2 Call history

- #.2.1 Missed calls
- #.2.2 Received calls
- #.2.3 Dialed calls
- #.2.4 All calls

#.3 Call durations

#.4 Call costs

#.5 Call divert

- #.5.1 Voice calls
- #.5.2 Video calls
- #.5.3 Deactivate all

#.6 Call barring

- #.6.1 Voice calls
- #.6.2 Video calls
- #.6.3 Deactivate all

#.7 Fixed dial numbers

#.8 Call waiting

- #.8.1 Activate
- #.8.2 Deactivate
- #.8.3 View status

#.9 Settings

- #.9.1 Call reject
- #.9.2 Send my number
- #.9.3 Auto redial
- #.9.4 Answer mode
- #.9.5 Minute minder
- #.9.6 BT answer mode

Screen

1



Screen

This menu allows you to personalise the display options of the screens and of the menus' entire graphic interface.

Screen theme

Home screen

- **Wallpaper:** You can select an image to set up as a background.
- **Display items:** You can select what items to display on the screen: Do no show or Clock.

Outgoing call

You can select the image to be displayed while dialling a number.

Switch on

You can select the image to be displayed while the videophone is being switched on.

Switch off

You can select the image to be displayed while the videophone is being switched off.

Menu style

- **Grid style:** The main menu will display all the menu items/icons at once.
- **One by one style:** The main menu will display all the menu items in rotation, one at a time.

Font

- **Font style:** Allows you to set the character style, choosing between Default and the more modern Fun Style.
- **Dialing font size:** Allows you to set the character size, choosing between Large and small.
- **Dialing font color:** Allows you to select from among 15 available character colours.

Backlight

Allows you to set backlight duration, selecting from the following options: 5, 10, 15, 30 seconds, 1, 2, 3 minutes, On and Off.

■ Main screen duration

■ Keypad duration

Item	Default Value
Main screen duration	Off 5 seconds 10 seconds 15 seconds 30 seconds 1 minute 2 minutes 3 minutes On
Keypad duration	Off 5 seconds 10 seconds 15 seconds 20 seconds On

Greeting message

You can write a text message to be displayed when the videophone is switched on.

Profiles

2



Profiles

The profiles menu allows you to personalise and set call tones, message tones, and videophone event tones.

The General and Loud profiles are preset by the manufacturer, but may be personalised.

The Silent and Vibration profiles are preset and CANNOT be personalised by the User.

User define menus 1,2, and 3 are completely available to users for all their needs.

1. Normal
2. Silent
3. Vibrate Only
4. Headset
5. Outdoor
6. Customised 1
7. Customised 2
8. Customised 3

The profiles may be personalised in the following menus:



- **Alert by:** You can personalise the type of signal made by the Videophone, choosing between Ring, Vibration, Silent, Ring & Vibration, Ring after vibration and Max Ring & Vibration.
- **Voice ringtone:** You can select a file from among your own personal files or from the default files, to be played by the videophone when receiving a voice call.
- **Video ringtone:** You can select a file from among your own personal files or from the default files, to be played by the videophone when receiving a video call.

- **Volume:** You can set the ring tone volume, choosing from 7 available levels.
- **Message alert:** You can set how often the videophone is to inform you of a received message until it is read.
- **Message tone:** You can select a file from among your own personal files or from the default files, to be played by the videophone upon receiving a message.
- **Key tone:** You can set the effect to be played when pressing the keys.
- **Key tone volume:** You can set the volume of the chosen effect, choosing from 7 available levels.
- **Slide tone:** You can select one of the available files, to be played by the videophone when you open the phone.
- **Confirmation tone:** You can set the confirmation tone to be played by the videophone to confirm actions.
- **Switch on sound:** You can set the effect to be played when the videophone is switched on.
- **Switch on file:** You can select which file will be played when the videophone is switched on.
- **Switch off sound:** You can set the effect to be played when the videophone is switched off.
- **Switch off file:** You can select which file will be played when the videophone is switched off.



Settings



3

Settings



Date & Time

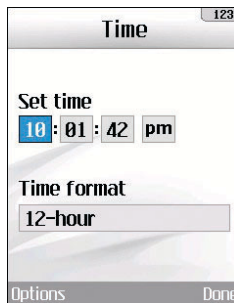
You can change the format of the time and date display as well as the actual time and date using the Time settings menu.

Time

1. Select the Time item from the Date & Time list and then press the  key.
2. Input the current time using the numeric keys.
3. Select the time format using the left and right navigation keys.
4. Press the  key to save the time.

Date

1. Select the Date item from the Date & Time list, and then press the  key.
2. Input the date using the numeric keys.
3. Select the date format using the left and right navigation keys.
4. Press the  key to save the date.



Note

Please make sure that you set the exact date and time to ensure that all 3 services operate correctly.

Auto update date/time

When Auto Update is configured to On, the time and date are automatically updated according to the current time zone. If Confirm first is selected, time and date update are confirmed before the automatic update.

Daylight saving

This function enables Summer time. Configuring Daylight saving to On immediately applies summer time for the cities which observe daylight saving and currently daylight saving period is running. (For example, if the current time is 04:53 and daylight saving is running in the currently selected home city in World time then time will change to 05:53).

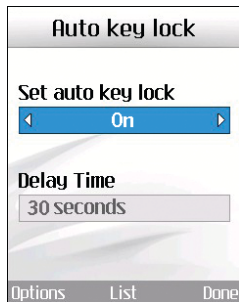
Auto key lock

This menu allows you to set on Auto Key Lock function. When you don't press any key during the time you set, the keypad is locked automatically.

Network

Network selection

- **Automatic:** This function automatically searches for the network and registers the handset to the network.
- **Manual:** This function enables you to search the network list and specify which network to



attempt registration with.

Location mode

You may have multiple data connections active at the same time when you are using your phone in 3G only, 3G/GSM and GSM networks.

Preferred list

You can select preferred lists to display it saved in the current USIM card and can edit the current preferred list.


Settings

Flight mode

This allows you to use only the phone's features that do not require the use of the wireless network when you are in an airplane or in places where the wireless network is prevented. If you set the flight mode on, the icon will be displayed on the screen instead of the network signal icon.

- **On:** You cannot make (or receive) any calls, including emergency calls, or use other features that require network coverage
- **Set When switching on**
- **Off:** You can deactivate the flight mode and restart your handset to access the network.

Access points

This menu shows the Access Point List. Select the  key [Edit]. Access Point has the following items.

- **Connection title:** Profile Name
- **Bearer:** UMTS/CSD/GPRS
- **Authentication:** No auth/PAP/CHAP
- **Username:** User name

- **Password:** Password
- **APN:** APN information of the service provider



To modify these settings please call 3 Customer Service.

Security

You can set a PIN code. When it is activated, a window asking you to enter the PIN code appears when you turn on the handset so as to prevent unauthorised use of the handset.

PIN code request

You can activate a PIN (Personal Identification Numeric).

1. Select PIN code request from the security menu and press the  key.
2. Configure this item to On or Off. If it is On, a PIN code will be required whenever the handset is turned on.
3. Input the current PIN code and press the  key.
4. Entering an incorrect PIN code 3 times in the PIN code input window invalidates the PIN

code. In this case, the PUK code must be entered in order to reset the PIN code.

5. The maximum number of attempts at PUK code input permitted is 10. Entering an incorrect PUK code 10 times will restrict use of the handset. In this case, ask 3 Customer Service to unlock your handset.

Press the Back key in the PIN code input window to return to the previous step.

Handset lock

You can use security code to avoid unauthorised use of your handset.

When you switch on your handset, your handset will request security code always if you set phone lock to "Power on".



You can select the menu from **When switching on, If USIM changed, Lock now, and None.**

Change codes

You can change PIN, PIN2 and the security code.

Note

If you change the code and then forget it you will need to contact your place of purchase to unlock it or solve this problem.

- **PIN/PIN 2 code:** This menu allows you to change the PIN or PIN2 code.
 1. Select Change codes from the Security Settings List and press the  key.
 2. Select PIN or PIN2 Code and press the  key.
 3. Input the current PIN or PIN2 code, and then a new PIN or PIN2 code. Entering an incorrect PIN code 3 times invalidates the PIN code. In this case, you will need to enter the PUK or PUK2 code in order to reset the PIN code.
 4. Entering an incorrect PUK code 10 times will restrict use of the handset. In this case, ask 3 Customer Service to unlock your phone.
- **Security code:** This menu allows you to change the handset password. The maximum allowed numeric of attempts of security code input is not limited like PIN and PIN2.

Settings

Language

This function allows you to set the language used in the handset.

Memory status

This menu is used to view the memory use of the phone and USIM card. You can obtain information about the amount of memory used by the contacts, the calendar, to do, memos, secret memos and text message and multimedia messages.

Common memory

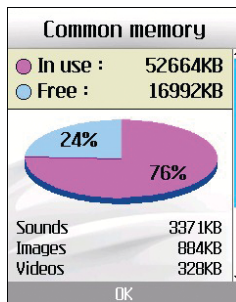
This function shows the status of the user memory of the handset.

Reserved memory

This function shows the available memory for the user.

USIM memory

This function shows the status of the USIM card user memory.



External memory

This function shows the status of the external memory card.

Format external memory

This function will format the external memory.

Handset information

This menu is used to view phone number, model number and software version information.

Reset settings

This function allows you to restore factory settings.




Browser **4**

Browser


3 brings you a whole world of communications, information and entertainment services.

You can ask for directions within major cities, get the latest news, keep up to date with Premier League action and much, much more.

The browser is available in the 3G coverage area.





To launch the browser in standby mode, press the  key.


Home


Select Home in the Internet Menu and then press the  key.


If you want to reload current page, press the right soft key [Reload].


The following options are available. Press the left soft key [Options].

-  **Back:** Moves to the previous page.
-  **Forward:** Moves to the previous page.
-  **Reload:** Loads the current page again.
-  **Home:** Moves to the initial homepage.

-  **Go to URL:** Connect to the specific URL after editing.

-  **Bookmark:** You can add or save the current page to the Bookmark or view the list saved under Bookmark.

-  **Go To Downloading:** Downloads the application of the current page.

-  **Settings:** You can set the Browser related options such as Rendering mode, Thumbnail, Zoom, Clear cache, Session info., Clear cookies, etc.

The following example shows the functionality of browser menu 'Forward'.

1. Navigation Page A → Page B → Page C → Page D
2. On Page D, select a menu 'Back', it will place a user in Page C.
3. On Page C, if select a menu 'Back', move to Page B. Else if select a menu 'Forward', move to Page D again.

Bookmarks

This function allows you to store and edit frequently accessed sites.

The following options are available. Press the left soft key [Options].

Connect

Allows you to access the selected site.

Send

Selected bookmark URL can be sent via text message, multimedia message or E-mail.

Add new

Adds a new site to the bookmarks list.

Edit

You can edit and save the name and address of the selected bookmark.

Mark/Unmark

Allows you to mark or unmark the selected site.



Delete

Delete the selected bookmark.

Saved pages

Saves the page on display as an off-line file. A maximum of 20 pages can be saved.

Go to URL

Connect to the specific URL after editing.


Browser

Security

- **Certificates:** A list of the available certificates is shown.
- **Session clear:** Allows you to close the security connection.

Settings

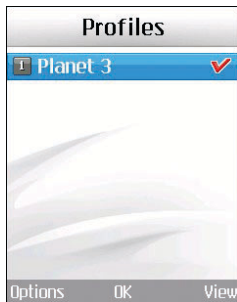
Profiles

Select the appropriate profile by pressing the  key. This will activate the profile to initiate browser launch.

Character encoding

Sets the browser default character set to one of the following.

: Automatic, English(ASCII), English(ISO), English(LATIN), Unicode(UCS2 BE), Unicode(UCS2 LE), Unicode(UCS2 Auto), Unicode(UTF-16 BE), Unicode(UTF-16 LE), Unicode(UTF-16 Auto), Unicode(UTF-8).



Scrolling control

Allows you to set the scroll speed by selecting the number of lines to scroll. Select from **1 line**, **2 lines** and **3 lines**.

Show Image

Allows you to enable or disable image display during browsing.

Note

Enabling this function will delay displaying of images until the completion of transmission. Disabling this function will prevent the browser

from downloading images from the server, thus allowing faster transmission.

Cache

Enabling Cache allows you to store accessed pages to your phone. Once a page has been stored in cache it will greatly enhance the page loading speed on subsequent browsing of the same page.

Cookies

Enabling Cookies allows you to store cookies sent from the server. Disabling this function will prevent cookies from being stored on your phone.

Clear cache

Deletes all web pages previously stored in cache.

Clear cookies

Deletes all previously stored cookies.

Live Streaming

This application plays streaming in live. To have a pleasure time with this, you must launch browser first, access to entertainment services and find the live streaming menu.

When you press streaming icon, the mobile terminal shows a live streaming automatically

VCR Control

If the streaming is in live, the mobile terminal shows VCR control skin with live bar.

 : Play and Pause alternately.

OPTION

Press the left soft key [Options] to display the following popup menu items.

1. File info.: Shows information about the current content provided by streaming server
2. Wide view: Normal/Landscape (for normal video) or Normal/Zoom/Landscape (for small size video)

Browser


Normal Streaming

Normal streaming is very similar to live streaming. To enjoy this service, you must launch the browser, access to entertainment services and select the normal streaming menu such as news, stock, music, weather etc.

- if there is no press Key more, then the mobile terminal start streaming with new time.

VCR Control

If the streaming is not in live, the mobile terminal shows VCR control skin with current play time

1.  : Play and Pause alternately.
2. Navigation left/right key: You can go forward/backward with this key more rapidly. The following example shows the functionality of streaming menu "FF/REW"
 - press FF/REW Key during the streaming, the mobile terminal makes video paused.
 - press more FF/REW Key, the mobile terminal display the new time and progress bar immediately. (user can select new time with FF/REW Key)

A black and white photograph of two men sitting on a boat. The man on the left is older, with white hair, wearing a white t-shirt and jeans, smiling broadly. The man on the right is younger, wearing a polo shirt and shorts, also smiling. They are both looking at each other. The background shows a body of water and a forested shore.

Messages

5

Messages

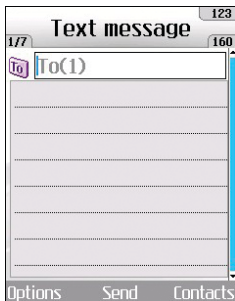
Create new message

Text message

Press the Message shortcut key to display Messages menu, select **Create new message** and then select **Text message**.

You can write and edit a single text message up to 160 characters. You can write and edit up to 7 concatenated messages.

1. Press the left soft key [Options]/ [Search contacts] or use the right soft key [Contacts] to specify the recipient from Contacts.
2. When you input content, a new window allowing you to input content appears. By using the left soft key [Options]/[Insert], you can input emoticons, templates, and phone numbers through the Contacts. By using the right soft key on the bottom, you can input various symbols.
3. When the message has been sent, it will be saved in the Sent items automatically. If the message has not been sent, it will stay in the Outbox with fail status.





Multimedia message

Creating a Multimedia message

Select Messages from the top menu or pressing the Message shortcut key displays the message menu. In the menu, select Create new message, and then select Multimedia message and create a Multimedia message.

You can simply send picture with a Multimedia message attaching the picture from your album or directly from the multimedia menu.

Multimedia message

1. You can create a Multimedia message.
2. Select **Multimedia message** from the **Create new message** menu and then press the  key.
3. You can edit a Multimedia message field using the Down navigation Key.
4. Move the highlight to the **To** field, and input the recipient of the message. You can specify the recipient by either phone number or Email address. You can search the Contacts by pressing the left soft key [Options] or the right soft key [Contacts]. When a recipient has been specified, another field appears where you can add more recipients.
5. Move the highlight to the subject field, and write a title. You can select and input a template or emoticon by pressing the left soft key [Options] or use the right soft key [Insert].
6. You can add, delete, or edit each slide by moving the highlight to the text field.
7. You can save the message in the Drafts by using the left soft key [Options] while creating a message.
8. You can preview the message by using the left soft key [Options] while creating a message.
9. You can send the message by selecting the  key [Send].
10. You can select the following functions using the left soft key [Options].
 - **Insert:** You can insert New slide, Symbol, Template, Emoticon, Contacts, Image, Video, Sound, New image, New video or New sound.
 - **Send:** Sends the created Multimedia message at the time you wanted.
 - **Save as drafts:** Saves the created Multimedia message to Drafts.
 - **Preview:** You can preview the selected message.
 - **Dictionary:** Selects dictionary mode.
 - **Add to dictionary:** Adds the writing string in dictionary.
 - **Settings:** Allows you to set the slide and priority of the selected message.

Messages

- **Cancel:** Allows you to exit the text input mode without saving your input message.

Viewing Multimedia messages in the Preview and Drafts


1. You can preview a created Multimedia message.
2. If the message is too long to be displayed on screen, you can scroll the contents of the message by using the up and down navigation key.
3. Press the **OK** key to pause playback of the message, and press the **OK** key to resume playing the message.
4. If an audio or video file is attached to a Multimedia message, press the right soft key [Mute] to cancel the unmute function.

Viewing Multimedia messages in the Inbox and Sent items


1. Select a Multimedia message to view its contents.



2. If the message is too long to be displayed on a screen, you can scroll the contents of the message by using the up and down navigation key.
3. Press the **OK** key to pause playback of the message, and press the **OK** key to resume playing the message.
4. If an audio or video file is attached to a Multimedia message, press the right soft key [Mute] to activate the mute function. Press the right soft key [Mute] to cancel the unmute function.
When the multimedia message includes URL, you can try to connect the site. If the slide

includes URL, you can connect the URL by long press  key.

On the other hand, when you try to press the up or down navigation key, the slide show is paused automatically, and the right soft key menu option changes to "Link" if a URL is included in the slide. You can connect to the URL for browsing, downloading, and streaming.

5. Move to a desired message by using the left and right navigation keys.
6. Press the  key to reply to the message.
7. You can select the following functions using the left soft key [Options].

- **Pause/Play:** Pauses/Plays the selected message.
- **Reply:** Creates reply to the selected message.
- **Forward:** Forwards the selected message.
- **Save address:** Saves the telephone number to Contacts.
- **New message:** Creates a new message.
- **Video call:** You can make a video call to the sender's number.

- **Use:** Extracts the phone number, Email address or web address included in the text of the message.
- **Save attachment:** Saves the attachment of the selected message.
- **Delete:** Deletes the selected message.
- **Go to header page:** Moves to the header page.

Email

To send an email, you should first set up an email account.

Message edit

1. Select **Email** from the New Message menu.
2. You can input up to 20 addresses in the To, Cc fields and up to 10 addresses in the Bcc field.

Tip

To input @, select the right soft key [Symbol], and then press 9 numeric key pad to input.

3. Input the title of the mail to be sent in the Subject field.

Messages

4. Input the content of the mail to be sent in the Message field.
5. You can attach up to 10 files in a message.
6. When you have finished writing a message, press the **OK** key. You can send the message to outbox for Background sending.

Inbox

1. You can view saved messages. Select a message and then press the **OK** key to view the message.
2. You can view the previous or next message by using the left and right navigation keys.
3. To view a Multimedia message, select **Retrieve** in the message view screen. The message will begin downloading and will be displayed when it is finished.
4. You can use the following functions by using the left soft key [Options].
 - **Reply:** Creates reply to the selected message.
 - **Forward:** Forwards a selected message.
 - **View:** Views a selected message.



- **New message:** Creates a new message.
- **Video call:** You can make a video call to the sender's number.
- **Save address:** You can save the sender's address to the contacts.
- **Mark/Unmark:** Marks or unmarks the selected message.
- **Delete:** Deletes a selected message.
- **Copy:** Copies a selected message.(Only for SMS messages)
- **Move:** Moves a selected message.(Only for SMS messages)

- **Message Info.:** Displays information about the selected message.

Mailbox

1. Select Mailbox.
2. Select 3mail to retrieve messages from the Server List.
3. To retrieve new messages in the Mail Header screen, select Retrieve to retrieve the new Mail Header List.
4. Select your desired message from the retrieved mail headers to retrieve the mail contents from the server.

You can use the following functions by using the left soft key [Options].

- **Reply:** You can reply to a selected message.
- **Forward:** Forwards a selected message.
- **Save address:** Saves the sender's address to the contacts.
- **New message:** You can write a new message via SMS, MMS and Email.




■ Use

- Number: Extracts the phone number included in the text of the message.
- Email address: View up to 10 email addresses contained in the text of the message. You can send a message or save as a contact by selected email address.
- Web address: View up to 10 URLs contained in the text of the message. You can connect to the URL or save it as a bookmark.
- **View objects:** Shows the attachment file list.

Messages

- **View to address:** Shows information in To/Cc/Bcc field.
- **Delete:** Deletes a selected message.

Drafts


1. You can edit saved messages. Select a message and then press the  key to edit the message.
2. You can use the following functions by using the left soft key [Options].
 - **Edit:** You can edit a selected message.
 - **Send:** Sends the created message at the time you wanted.
 - **New message:** You can write a new message.
 - **Video call:** You can make a video call to the sender's number.
 - **Mark/Unmark:** You can mark or unmark the selected message.
 - **Delete:** You can delete a selected message.
 - **Message Info.:** Displays information about the selected message.

Outbox - messages waiting to be sent

Outbox is a temporary storage place for messages waiting to be sent. When you press the Send, the message moves to the Outbox and from there the message is sent. If the message fails to be sent from the Outbox, another attempt will be made. After five attempts the message will no longer be sent automatically. In order to send the message that has failed five times, you must press the Send from the Options menu.

Failed : The maximum number of sending attempts has been reached. Sending has failed. If you were trying to send a text message, open the message and check that the Sending options are correct.

Sent items

1. You can view sent messages. Select a message and then press the  key to view the message.
2. You can view the previous or next message by using the left and right navigation keys.
3. You can use the following functions by using the left soft key [Options].

- **Forward:** You can forward a selected message.
- **View:** You can view a selected message.
- **Edit:** You can edit a selected message.
- **New message:** You can write a new message.
- **Video call:** You can make a video call to the sender's number.
- **Save address:** You can save the sender's address to the contacts.
- **Mark/Unmark:** You can mark or unmark the selected message.
- **Delete:** You can delete a selected message.
- **Copy:** Copies a selected message.(Only for SMS messages)
- **Move:** Moves a selected message.(Only for SMS messages)
- **Message Info.:** Displays information about the selected message.



Templates

You can add, edit, and delete frequently-used phrases.

Emoticons

You can add, edit, and delete frequently used emoticons.

You can save emoticons that are frequently used in the input window in advance.

Messages

Settings

Text message

Delivery report

Allows you to activate or deactivate the report function. When this function is activated, the network informs you whether or not your message has been delivered.

Validity period

Allows you to set the length of time for which your text messages will be stored at the Text message centre while attempts are made to deliver them to the recipient.

Text message centre

The number of the Text message gateway is pre-loaded in your 3 handset and you should not change this. If you delete or change this by mistake contact 3 Customer Services for support.

Multimedia message

Select Multimedia message from the Settings menu to configure Multimedia message related options.

Delivery report

This menu allows you to determine whether to request a delivery confirmation mail and whether to allow receiving delivery confirmation mail for a multimedia message.

- Request report: Determines whether to request a delivery confirmation mail for a Multimedia message.
- Allow report: Determines whether to allow receiving a delivery confirmation mail for a delivery confirmation mail request.

Read reply

This menu allows you to determine whether to request a read confirmation mail to a recipient, and whether to allow sending read confirmation mail to a sender.

- Request reply: Determines whether to request a read confirmation mail for a Multimedia message.
- Allow reply: Determines whether to allow receiving a read confirmation mail for a read confirmation mail request.

Validity period

This menu allows you to configure the term of validity for a message when transmitting a Multimedia message. The message will be saved in the Multimedia server only for the configured term.

Slide duration

This menu allows you to configure the duration of each page when writing the message.

Multi. msg centre


The details for the Multimedia gateway are pre-loaded onto your handset and should not be changed. If you change or delete these by mistake contact 3 customer services for support.

You can add or edit the profile of multimedia message except the default profile.

Email


This menu allows you to edit, delete and add an Email account.

To set up an Email account, do the following.

1. Select Messages/Settings/Email/Email accounts after pressing the  key in the idle screen.
2. Press the right soft key [Edit].
3. Enter details **Username** (your phone number with Country code without + eg 447782227302), **Password, Email address, Reply email address, etc.**
4. You can authenticate by pressing the right soft key [Done].

Once you have set up details of your other accounts, you can collect mail from those accounts by retrieving from Mailbox.

To retrieve an email, do the following:

1. Select the mail server you want to retrieve in the Mailbox.
2. Choose the email by using the navigation key.
3. Press the right soft key [Retrieve] or [Synch].
4. Press the  key.

Messages

Videomail

This menu allows you to get the video mail if this feature is supported by the network service provider. Please check with your network service provider for details of their service in order to configure the handset accordingly.

Voicemail

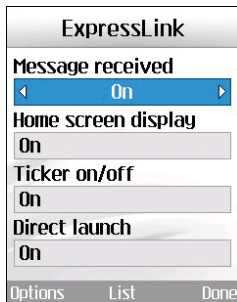
This menu allows you to get the voice mail if this feature is supported by the network service provider. Please check with your network service provider for details of their service in order to configure the handset accordingly.

ExpressLink

You can order ExpressLink from WAP service providers. ExpressLink is notifications of, for example, news headlines and it may contain a text message or address of a WAP service. For availability and subscription, contact your WAP service provider.

Info. Service

Info service messages are text messages sent by the network to GSM phone users. They



provide general information such as weather reports, traffic news, taxis, pharmacies, and stock prices. Each type of information is associated with a number, which can be obtained from the service provider. When you receive an info service message, a popup message will indicate a new message receipt or the info service message will be displayed directly.

My stuff **6**



My stuff

Images

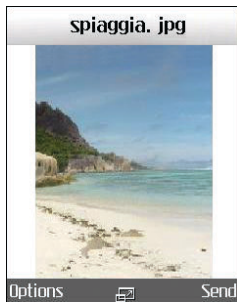
This application enables you to view still images. The image files saved in the handset are represented by thumbnails. Select the desired image to view the enlarged image.

Notice

Features within the Edit Image might not work due to large image size or lack of internal phone resource. For example, Rotate will not work for images greater than 1280x960.

Press the left soft key [Options] to display the following popup menu items (in 1. Image list).

- **View:** You can view the selected image.
- **Create new folder:** You can create new folder.
- **Send:** Enables the selected image to be sent via MMS, Email and Bluetooth.
- **Files**
 - Move: Enables the file to be moved other folder.
 - Copy: Enables the file to be copied other folder.



- Rename: Enables the image to be renamed.
- Edit: Enables the image to be edited.
- Info: Shows information about the selected image file.
- **Delete:** Deletes the selected image.
- **Mark/Unmark:** You can mark or unmark the selected file.
- **Main screen theme:** You can set an image as the screen theme (Home screen, Outgoing call, Switch on, Switch off).
- **Slideshow:** You can start the slide show.

- **Sort by:** Sorts images.
- **List/ Grid view:** You can set the view style.
- **Memory status:** Shows the current memory usage.

Press the left soft key [Options] to display the following popup menu items (in 2. Picture Viewer).

- **Go to list:** moves to the application list.
- **Send:** Enables the selected image to be attached to a message and the message sent.
- **Files**
 - Edit picture: Enables the image to be edited.
 - File info.: Shows information about the selected image file.
- **Delete:** Deletes the selected image.
- **Zoom:** You can zoom in and out the image.
- **Main screen theme:** You can set an image as the screen theme (Home screen, Outgoing call, Switch on and Switch off).

- **Slide show:** You can start the slide show.

Videos

This application plays recorded video (.3gp or MPEG4 files). Select a desired video.

The following options are provided by the Video Player.


There are two scenarios;

- 1) Play status and
- 2) Pause status


Press the left soft key [Options] to display the following popup menu items (when 1. Play status).

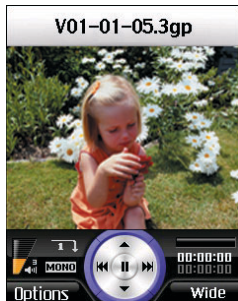
- **Send:** Enables the selected video to be sent via MMS, Email and Bluetooth.
- **Delete:** Deletes the selected video file.
- **File info.:** Shows information about the selected video file.
- **Sound theme:** You can set a video file as the sound theme (Voice ringtone, Video ringtone).

My stuff

- **Video size:** Enables the selected video to be shown as Normal, Zoom and Full screen. In Play mode, you can change the video size to press the  key.
- **Mute/Unmute:** Mutes/Unmutes the sound temporarily.
- **Set repeat:** Repeats the video file.

Press the left soft key [Options] to display the following popup menu items (when 2. Pause status).

- **Send:** Enables the selected video to be sent via MMS, Email and Bluetooth.
- **Delete:** Deletes the selected video file.
- **File info.:** Shows information about the selected video file.
- **Sound theme:** You can set a video file as the sound theme (Voice ringtone, Video ringtone).
- **Video size:** Enables the selected video to be shown as Normal, Zoom and Full screen. In Play mode, you can change the video size to press the  key.

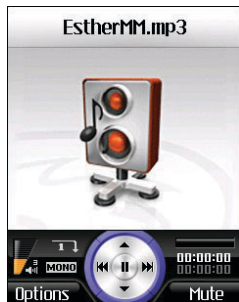


- **Capture:** Captures an image from the video file.
- **Set repeat:** Repeats the video file.
- **Previous file:** Plays the previous video file.
- **Next file:** Plays the next video file.

Press the left soft key [Options] to display the following popup menu items

- **Play:** Plays the selected video.
- **Create new folder:** You can create new folder.

- **Send:** You can attach the selected video file to a message and send the message if not content protected.
- **Files**
 - Move: Enables the file to be moved other folder.
 - Copy: Enables the file to be copied other folder.
 - Rename: Enables the video to be renamed.
 - Info: Shows information about the selected video file.
- **Delete:** Deletes the selected video file.
- **Mark/Unmark:** You can mark or unmark the selected file.
- **Sound theme:** You can set a video file as the sound theme (Voice ringtone, Video ringtone).
- **Sort by:** Sorts video files.
- **List/ Grid view:** You can set the view style as List and Grid.
- **Memory status:** Shows the current memory usage.



Sounds

This application plays MP3, MIDI and AAC files so that you can listen to them. Select your desired audio file in the list mode showing audio files. The following options are provided by the My sounds in the Audio Player.

Press the left soft key [Options] to display the following popup menu items (in 1. audio player status).

- **Send:** Enables the selected audio file to be sent via MMS, Email and Bluetooth.
- **Delete:** Deletes the selected audio file.

My stuff

- **File info.:** Shows information about the selected audio file.
- **Sound theme:** You can set an audio file as the sound theme (Voice ringtone, Video ringtone, Message tone, Switch on and Switch off).
- **Mute/Unmute:** Mutes/Unmutes the sound temporarily.
- **Set repeat:** Repeats the audio file.
- **Minimize:** You can set the minimize.
- **Equalizer:** You can set the equalizer.
- **Previous file:** Plays the previous audio file.
- **Next file:** Plays the next audio file.
- **Interval Repeat:** You can select the desired repeat area.
- **File List View:** You can see the list of audio files.

Press the left soft key [Options] to display the following popup menu items(in 2. Audio list).

- **Play:** Plays the selected audio file.
- **DJ-ing:** You can go to DJ-ing mode.
- **Create new folder:** You can create new folder.
- **Send:** Enables the selected image to be sent via MMS, Email and Bluetooth.
- **Files**
 - Move: Enables the file to be moved other folder.
 - Copy: Enables the file to be copied other folder.
 - Rename: Enables the image to be renamed.
 - Info: Shows information about the selected audio file.
- **Delete:** Deletes the selected image.
- **Mark/Unmark:** You can mark or unmark the selected file.
- **Sound theme:** You can set an audio file as the sound theme (Voice ringtone, Video ringtone, Switch on, Message tone, Switch off).
- **Sort by:** Sorts audio files.
- **Memory status:** Shows the current memory usage.

Applications

For further details, see the page 90, (Menu 9 Games & Apps)

Flash contents

This application enables you to play flash contents (SWF file).

Notice

You cannot play the sound included in the flash file. You cannot play the flash file exceeding 300KB.

Press the left soft key [Options] to display the following popup menu items (in 1. Flash list).

- **Play:** You can play the selected flash file.
- **Create new folder:** You can create a new folder.
- **Files**
 - Move: Enables the file to be moved other folder.
 - Copy: Enables the file to be copied other folder.

- Rename: Enables the file to be renamed.
- Info: Shows information about the selected file.

- **Delete:** Deletes the selected file.
- **Mark/Unmark:** You can mark or unmark the selected file.
- **Sort by:** Sorts files.
- **Memory status:** Shows the current memory usage.

Press the left soft key [Options] to display the following popup menu items (in 2. Flash player).

- **Pause / Play:** It plays or pauses.
- **Go to list:** moves to the application list.
- **Delete:** Deletes the selected flash file.
- **Full / Wide / Normal screen:**
 - Full screen: It plays in full screen mode.
 - Wide screen: It plays in horizontally full screen mode (for flash in big width).
 - Normal screen: It plays in normal screen mode.

My stuff

- **File info.:** Shows information about the selected flash file.
- **Set repeat:** Select desired repeat mode using the navigation key.

External memory

If your phone is installed the TransFlash card in the card slot, you can save images, sounds, and videos on the memory card. You can check the current status of the external memory in Memory status menu.

Audio/ Video play lists

This option enables you to view a list of saved audio/video files.

You can add an audio/video file stored in your phone and memory card.

Press the left soft key [Options] to display the following popup menu items.

- **Play:** Plays the selected audio/video file.
- **Add new:** You can add a new file from the sound/video list.
- **Delete all:** Deletes all the stored audio files.

Multimedia

7



Multimedia

Video camera

This application enables you to record a video clip. You can play and watch a saved video file while using this function. Once recorded, a video clip can be sent by Multimedia message or Email or Bluetooth.

Press the left soft key [Options] to display the following popup menu items.

- **Quality:** Sets the quality of a video clip.
- **Light:** Selects when the light will be used in video camera mode.
- **Zoom:** Sets the level of zoom.
- **Brightness:** Allows the brightness level to be set.
- **White balance:** Sets the white balance.
- **Night mode:** Switches to Night mode.
- **Effect:** Selects the special effect to be applied to the video.
- **SwapCam:** Switches between the External and Internal camera.
- **Duration:** Sets the recording duration in video mode.



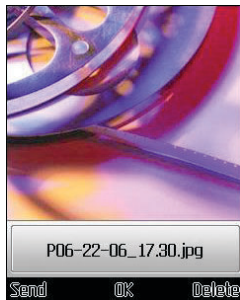
- **Sound:** Selects sound recording on or off in the video camera mode.
- **Mirror:** Sets the mirror mode.
- **Memory:** Selects where the recorded video will be saved - to the handset or the memory card.

Camera

This application enables you to take a still picture. You can take a picture in your desired size, and use it for the contacts photo, home screen and other more general purposes. Once taken, a still image can be sent by Multimedia msg or Email or Bluetooth.

Press the left soft key [Options] to display the following popup menu items.

- **Size:** Sets the size of an image.
- **Quality:** Sets the quality of an image.
- **Light:** Selects when the light will be used in camera mode.
- **Multishot:** Sets whether to enable multi-shot photography.
- **Zoom:** Sets the level of zoom in camera mode.
- **Brightness:** Allows the brightness level to be set.
- **White balance:** Sets the white balance.
- **Night mode:** Switches to Night mode.
- **Frame Shot:** Selects a frame around the camera image.
- **Timer:** Camera timer can be set to None/3 seconds/5 seconds/10 seconds.
- **Effect:** Sets the special effect to the picture.
- **Mirror:** Sets the mirror mode.
- **SwapCam:** Switches between the External and Internal camera.



- **Sound:** Sets the sound when the shutter is pressed.
- **Memory:** Sets the memory.

Notice

When you take a picture you can see the added area on both sides of the screen compare with the preview image.

Voice recorder

This function allows you to record a voice memo. You can record voice messages with each message up to 185 seconds.

Multimedia

Press the left soft key [Options] to display the following popup menu items.



- **Quality:** Determines the quality of a recorded voice.
- **New recording:** Determines the recording a new voice.
- **My stuff:** Show the voice lists recorded.

Melody composer


You can compose melody and play with the instrument of your chosen.

1. Once select **Keyboard Mode** or **Score Mode**. You can compose melody with this mode.
2. Input the melody that you want.
3. Select Play the melody by press [OK].

DJ-ing

You can choose music with the '  ', '  ' and [OK].

You can mix and play with other sound effect during the music playing.

When you edit the music file, you can get scratch effect. with moving '  ' wheel key.

Settings

Video camera

For further details, see the page 82.

Camera

For further details, see the page 82.

Voice recorder

Allows you to set the duration and quality for recording the voice by using the left/right navigation key.

Melody composer

Allows you to set the style, instrument, rhythm and tempo to compose your own music.

Memory status

For further details, see the page 54.

Contacts

8



Contacts

This menu allows you to save and manage contact address information. The Contacts functions provide functions to add a new address or search saved contact addresses by name, phone number and group information.

Add new

This menu allows you to add a new contact address. You can input contact address information including name, phone numbers, email addresses, group information items, memo, homepage address, ringtone, and avatar or image (photograph), etc.

You have to select Handset or USIM card memory using the left and right navigation keys.

Search

This menu allows you to search your contact addresses. Generally the search operation is performed by name, number & groups. In the search window, the current search function and results for the search condition are displayed.

On the screen, a saved image or avatar is displayed for the selected contact address. You



can change the configuration in the Show image/avatar(Menu 8.7.2) menu so that no image or avatar is displayed. You can also make a phone call or send a message to the selected phone number.


Speed dials

This menu allows you to configure speed dial numbers. You can select a number as a speed dial from 3 to 9. You can configure speed dial numbers for any of the 7 numbers for a specific contact address so that a contact address may have multiple speed dial numbers.

Groups

This menu allows you to manage group information. By default, there are 4 groups: family, friends, colleagues and school. You can also configure ringtone for a group so that the group ringtone sounds when a call from a specific contact address within that group arrives and there is no ringtone configured for the contact address.

Service dial numbers

This menu allows you to make a call to one of the numbers provided by 3 Customer Service by moving the highlight to the desired number and pressing the  key. (E.g. 3 customer service, mail, 3 customer finance, etc.)

Own number

Allows you to display your phone number in the USIM card.

Settings

Allows you to set the display way as for the following items.



Display data

Handset/ USIM/ Handset&USIM

Show image/avatar

On / Off

Copy all

This menu allows you to copy all information from your USIM card, e.g. name, handset number, etc., to your handset. If a name is duplicated during the copying operation, the information is duplicated.

Contacts

- **Handset to USIM:** You can copy the entry from the handset memory to the USIM card (not all the data will be copied).
- **USIM to handset:** You can copy the entry from the USIM card to phone memory.

Move all

This menu allows you to move all the information from your USIM card, e.g. name, handset number etc., to your handset. This differs from the Copy all operation in that the target information is saved only in the destination location.

- **Handset to USIM:** You can move the entry from the phone memory to the USIM card.
- **USIM to handset:** You can move the entry from the USIM card to phone memory.

Clear contacts

This menu deletes contact address information. You can delete contact addresses saved in the handset memory and you can delete the numbers saved on the USIM card.




Games & Apps

9



Games & Apps

This Handset supports Java™ so that you can download games from Today on 3, and play them on your handset.

Games can be downloaded from the game page of the H3G portal site. Users can go to that page using the  key.

Note

Please note that downloading a game usually requires additional charge.

My games & apps

This menu is used to locate and run downloaded applications, e.g. games. Select My games & apps to view the list of applications that have been downloaded to the handset.

Download games & apps

This menu is used to go directly to the game download page, so that users can browse and select the games to download. This is possible because the Internet browser is launching with the game portal URL setting. This URL is specified in the Settings menu - Java Portal URL.


By default, the setting is on the game page of the H3G portal (or, it can be left blank if the Operator does not specify the URL). If users want to change the default setting, the game portal URL can be modified in the Settings menu.

Settings

This menu is used to configure the Java Internet portal site to connect to in order to Download games & apps.

If this menu is selected, the list of currently saved Java Internet portal sites and the configured displayed.

The first Settings screen: Shows the item list if there are saved items.

1. Select an item using the up or down navigation keys.
2. Press the  key to activate the selected item service.
3. Press the left soft key [Options] to display the popup menu.

- **Activate:** Activates the selected item.
- **Add new:** New profile is added.
- **View:** Shows the contents of the selected item.

Organiser



Organiser

Calendar

Monthly Schedule Management


1. Select the Organiser from the top menu.
2. Select Calendar and press the **OK** key.
3. The monthly schedule view is displayed.
4. Initially, the cursor appears on today's date according to your handset settings.
5. You can move the date cursor to the desired location using the up, down, left and right navigation keys.
6. On a date where a schedule item is saved, corresponding icons and the number of saved schedule items are displayed on the bottom left of the screen.

Adding a New Schedule Item




1. Select the left soft key [Options] in the Monthly schedule management screen, select the Add new from the popup menu and then press the **OK** key. Alternatively, select the right soft key [Add] in the Monthly schedule management screen.

06/2006						
Mo	Tu	We	Th	Fr	Sa	Su
22	29	30	31	1	2	3 4
23	5	6	7	8	9	10 11
24	12	13	14	15	16	17 18
25	19	20	21	22	23	24 25
26	26	27	28	29	30	1 2
27	3	4	5	6	7	8 9
Options		View			Add	


2. Input the desired date using the numeric keys.
3. Input the desired time using the numeric keys.
4. Input the subject.
5. Select the repeat type using the left and right navigation keys.
6. Select the alarm type using the left and right navigation keys.
7. Select the user setting type using the left and right navigation keys.
8. Input the desired duration using the numeric keys.

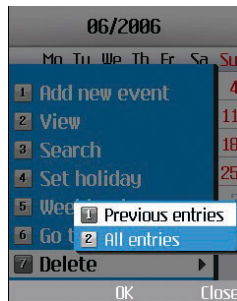
9. Select the expiration type using the left and right navigation keys.
10. Input the expiration date using the numeric keys.
11. Press the  key to save the new schedule item.

Deleting a Schedule Item

1. Select the left soft key [Options] in the Monthly schedule management screen, select Delete, and then press the  key.
2. Popup menu including Previous entries and All entries will be displayed.
3. Select Previous entries and press the  key to delete all schedule items prior to the selected date.
4. Select All entries, and press the  key to delete all of the schedule items.

Set holiday


1. Select the left soft key [Options] in the Monthly schedule management screen, select Set holiday and then press the  key to display the Holiday setting popup window.




2. The date corresponding to the configured holiday is represented in red in the Monthly schedule management screen.



Organiser

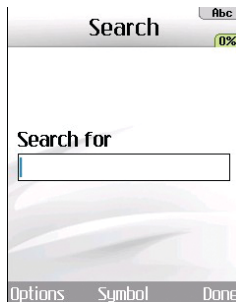
Searching for a Schedule Item

Select the left soft key [Options] in the Monthly schedule management screen, select Search and then press the  key to display the Search schedule items screen.

1. Input the desired subject of the schedule item to find.
2. Select the In type to find.
3. Press the  key.
4. If there are schedule items that meet the search criteria, the schedule items are displayed. If there is no schedule item satisfying the search criteria, No match schedule Item message appears.

Moving to a Specific Date


1. Select the left soft key [Options] in the Monthly schedule management screen, select Go to date and then press the  key to display Go to date window.
2. Input the desired date to move to and press the  key.



3. The date cursor of the Monthly schedule management screen will then move to the specified date.

To do

To do Enquiry

1. Select the Organiser from the top menu.
2. Select the To do item and press the  key.
3. The saved To do list is displayed.

Adding To do Items

1. To add a new To do item, select Add new using the left soft key [Options] in the To do enquiry screen or select the right soft key [Add].
2. Input Date, notes and priority when you add an item.
3. Press the right soft key [Done] to save the To do item.

To do Delete

1. Select the desired item(s) to delete from the To do list and press the Delete using the left soft key [Options] to delete the To do item.

Finished/Not finished


1. If you wish to mark an item in the saved To do list as done, select the item from the To do list.
2. Select the Finished using the left soft key [Options] to draw a line over the schedule item to mark it as done.
3. To cancel Finished, select the Not finished.



Mark/Unmark

1. You can Mark/Unmark desired (all) item(s) from the list.
2. By this option you can delete marked items.


To do Detailed View

To view detailed information, select the desired item from the To do list and press the  key to display the detailed view screen about the item.


Organiser

Memo

Saved Memo's

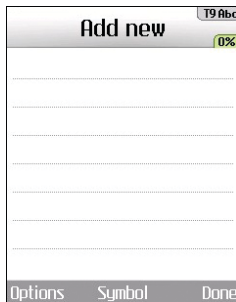
1. Select the Organiser from the top menu.
2. Select the Memo item and press the  key.
3. The saved memo list is displayed.

Memo Add

1. To add a new memo, select Add new using the left soft key [Options] in the General memo screen or select the right soft key [Add].
2. Input the contents of the memo to be saved.
3. Press the  key to save the memo.

Memo Lock/Unlock

1. Select the desired item to lock from the saved memos list. The locked memo is converted to a secret memo.
2. Select Move to secret memo using the [Options] key to lock the memo item.
3. To release the lock again, select Move to memo in the Secret memo item.




Memo Edit

You can edit the selected memo.

Memo Delete

1. Select the desired item(s) to delete from the Memo list and select Delete using the left soft key [Options] to delete the memo.

Secret memo

1. Select the Organiser from the top menu.
2. Select the **Secret memo** item and press the  key.

- To view or delete the memo set up as a secret memo, you have to input the password configured in the phone.

Date finder

The date finder shows the start date, the target date and the number of remaining days.

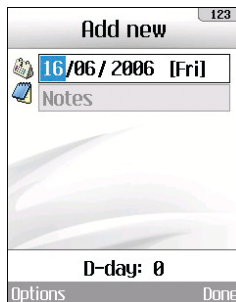
Dateulator

■ Dateulator enquiry

- Select the Organiser from the top menu.
- Select the Dateulator item and press the OK key.
- The saved Dateulator list is displayed.

■ Adding Dateulator items

- To add a new Dateulator item, select Add new using the left soft key [Options] in the Dateulator enquiry screen or select right soft key [Add].
- Input the Date, and notes when you add an item.
- Press the right soft key [Done] to save the item.



■ Mark/Unmark

- You can Mark/Unmark desired (all) item(s) from the list.
- By this option you can delete marked items.

■ **Dateulator Delete:** Select the desired item(s) to delete from the Dateulator list and press the Delete using the left soft key [Options] to delete the Dateulator item.

■ **Dateulator Detailed View:** To view detailed information, select the desired item from the Dateulator list and press OK key to display the detailed view screen about the item.

Organiser

- **Show home screen/ Do not show home screen:** By setting Show home screen, you can see the Remaining days for this item (D-Day) on Idle screen top left corner.

Settings

Calendar

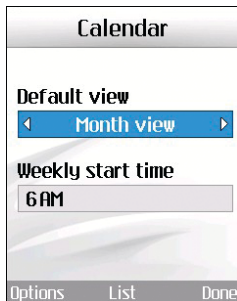
You can change Calendar Default view and Week start time to desired options. Press right soft key [Done] to save settings in phone.

Memory info.

Allows you to view each memory status of the organiser menu.

Clear all

Allows you to delete all the saved items, you need to input the security code.



Tools


0

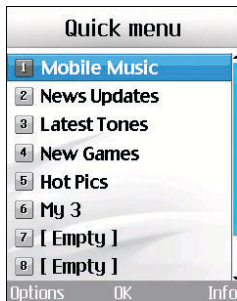


Tools

Quick menu

Quick menu allows you to add your own favourites to the list already provided. To move to your desired menu directly, select your desired menu from the Favourites menu press the up and down navigation keys.

- **Add new:** In the [Empty] list, press the right soft key [Add]. Select the item from the menu and save the desired menu item.
- **Open:** In the added menu items list, press the left soft key [Options] or the  key. To move to your desired menu directly.
- **Edit:** In the added menu items list, press the right soft key [Edit] or the left soft key [Options]. Select Edit from the menu to edit a saved menu item.
- **Delete:** In the added menu items list, press the left soft key [Options]. Select Delete from the menu to delete a saved menu item.
- **Delete all:** In the added menu items, press the left soft key [Options]. Select Delete all from the menu to delete Quick menu items 7 to 0.





- **View info.:** In the added menu item list, press the left soft key [Options].

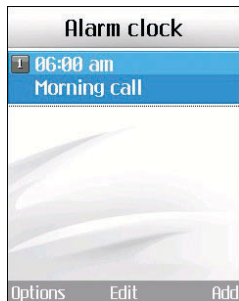
Select View info. from the menu to view the information about the actual location of the added menu item.

Alarm clock

The alarm function allows you to set up multiple separate alarms. You can also set the time, repetition interval and alarm sound.

- Select your desired alarm to configure in the alarm list. If there is no alarm, press the right soft key [Add] to add a new alarm.
- **Set/Cancel alarm:** Select desired set time mode using the navigation key.
- **Input alarm time:** Input your desired alarm time by specifying hour and minute. If the time format is 12 hours-based format, you have to select either 'am' or 'pm' using the  key.
- **Select repeat mode:** Select desired repeat mode using the navigation key.
- **Select bell:** Select the bell to use for the alarm using the navigation key.
- **Input memo:** Input alarm name.

When you have completed configuration, press the  key to save the changed alarm configuration.



Note

Alarm function works even if the phone is turned off.

Tools

Connectivity

Bluetooth

Paired devices

Select the Paired devices by pressing the OK key. This function allows you to view the list of all devices that are paired with your phone at once.

■ Adding a new device

1. Select the Add to search the device can be connected in range.
2. If you want to stop the searching , press the right soft key [Cancel].
3. All of the searched devices are displayed the popup menu.

Select the desired device by pressing the OK key, and input the password.

- **Assigning a short name:** Press the OK key, to rename the paired device.
- **Connecting/Disconnecting the device**
 1. Select the Connect, allows you to active to the bluetooth connection.



2. If you want to close the connection to the selected device, select the Disconnect.

Note

This options is appeared when the device connected with your phone is the headset.

Bluetooth profiles are Advanced audio distribution profile, Audio/video remote control profile, Headset profile, Handsfree profile, Dial Up Networking Profile, Object Push Profile and Serial Port Profile.

- Please use a headset that conforms to handsfree, headset profile authentication.

- **Deleting devices:** Select Yes to delete the selected device.
- **Deleting all the devices:** Select Yes to delete all the devices in the list.

Settings


This menu allows you to configure the profile for a bluetooth.


- **Bluetooth usage:** Set on or off the bluetooth using the left/right navigation key.
- **My handset's visibility:**
 1. Select the Shown to all, shows your phone to other bluetooth devices.
 2. Select the Hidden, shows your phone only to the paired device.
- **My Handset's name:** Allows to you change the handset's name can be seen by other bluetooth devices.

Server synchronisation

The Server sync function synchronises the data in a phone and the data on a server such as contact address information, schedule items, and to do items via a wireless network.



Connect

Select Server synchronisation from the Connectivity menu and then press the  key.

Select the Connect item and then press the  key.

Connect to the server with the selected server profile and the synchronisation animation is displayed while the synchronisation is performed.

Logs

Select a Server synchronisation item in the Connectivity menu and then press the  key. Select Logs item and then press the  key to view the log for the last synchronisation operation performed.


Server synchronisation centre

This menu allows you to configure the profile for a Sync Server.

▪ Adding a new profile

1. In the Server synchronisation centre screen, press the left soft key [Options] key and select Add new to add a new profile.

Tools


2. Input and choose the Profile name, Host address, Username, Password, Contacts, Contact name, Calendar, Calendar name, To do, To do name and Access point.
3. Press the  key to save the new profile.

■ Editing a profile

1. Select a profile to edit.
2. Press the left soft key [Options], select Edit, and edit the selected profile.

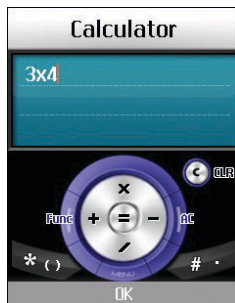
■ Deleting profiles


1. Press the left soft key [Options] and select Delete.
2. Select Yes to delete the selected profile.


- **Selecting a server:** Select a desired server profile to synchronise in the Server synch. centre screen and then press the  key.

Calculator

The calculator function allows you to add, subtract, multiply and divide. You can input numbers using the number keys, and operators using the up, down, left, and right navigation key.




You can input a decimal point by pressing the  key.

Whenever you press the  key, characters are sequentially deleted in reverse direction.

World time

The World time function provides time information on major cities worldwide.


1. You can view the time of desired country or city using the navigation or  [List].
2. You can select a desired city as a base using the right soft key [set].

Unit converter


This function converts any measurement into a unit you want.

There are 7 types of units that can be converted: Currency, Surface, Length, Weight, Temperature, Volume, and Velocity.

Note



You can input a decimal number by pressing the  key.

Currency

1. Select the Currency menu.
2. Users can set a currency exchange rate using the right soft key [Rate].
3. Input standard unit to view converted value.
4. You can view the value in home country currency unit in Domestic by inputting standard unit in Foreign.
5. Press the right soft key [Reset] to clear the current input field, and locate the cursor in the input field.
6. To exit currency conversion function, press the  key.





Surface



1. Select Surface menu.
2. Select desired unit to convert using the  key [Unit].
3. Input standard unit to view converted value.
4. Press the right soft key [Reset] to clear the current input field, and locate the cursor in the input field.
5. To exit area conversion function, press the  key.

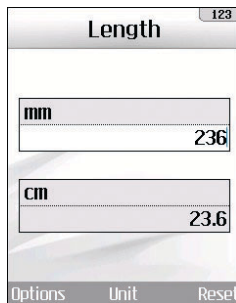
Tools

Length


1. Select Length menu.
2. Select the desired unit to convert using the  key [Unit].
3. Input the standard unit to view converted value.
4. Press the right soft key [Reset] to clear the current input field, and locate the cursor in the input field.
5. To exit length conversion function, press the  key.

Weight



1. Select Weight menu.
2. Select desired unit to convert using the  key [Unit].
3. Input the standard unit to view converted value.
4. Press the right soft key [Reset] to clear the current input field, and locate the cursor in the input field.
5. To exit weight conversion function, press the  key.

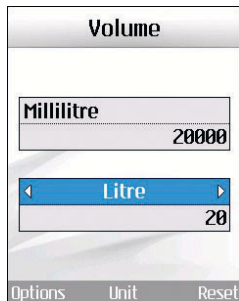


Temperature



1. Select Temperature menu.
2. Input the standard unit to view converted value.
3. Press the right soft key [Reset] to clear the current input field, and locate the cursor in the input field.
4. To exit temperature conversion function, press the  key.

Volume

1. Select Volume menu.
2. Select desired unit to convert using the  key [Unit].
3. Input the standard unit to view converted value.
4. Press the right soft key [Reset] to clear the current input field, and locate the cursor in the input field.
5. To exit volume conversion function, press the  key.



Velocity

1. Select Velocity menu.
2. Select desired unit to convert using the  key [Unit].
3. Input the standard unit to view converted value.
4. Press the right soft key [Reset] to clear the current input field, and locate the cursor in the input field.
5. To exit velocity conversion function, press the  key.

Calling



Calling

Video calls

My picture size

This menu allows you to configure your own picture size to either Large, Medium or Small.

My picture position

This menu allows you to configure your screen alignment to bottom right or bottom left.

Hide my picture

This menu allows you to hide your picture.

Mirror

This menu allows you to reverse your picture as a mirror image.


Substitute picture

This menu allows you to substitute your picture with another picture.

Call history

You can access the call register by pressing



the  key. Different icons show you the type of the recent calls registered in the list (see following page for icon description).

- You can view missed, received, dialled and entire call records. Each call record menu provides the following functions.
- You can make a voice or video call to the number in the call record.
- You can save the number in the call record to the Contacts.
- You can send a message to the number in the call record.

- You can view detailed information about the call records such as the date, time and call duration.
- You can clear call records.

Missed calls

Allows you to view missed call records, make a call, send a message and save the number in the Contacts.

Received calls








Allows you to view received call records, make a call, send a message and save the number in the Contacts.

Dialled calls

Allows you to view dialled call records, make a call, send a message and save the number.

All calls

This menu allows you to view all of the missed, received, and dialled call records. You can make a call, or send a message to the number you have selected from the records. You can also save the number in the Contacts.

-  Received video call
-  Dialled video call
-  Missed video call
-  Rejected video call
-  Received voice call
-  Dialled voice call
-  Missed voice call
-  Rejected voice call

Call duration

Shows call duration time by type. Press the right soft key [Clear] to reset. A security code will be requested.

Last call

Displays the duration of the last call made in hours/minutes/seconds.

Received calls

Displays received call duration.

Calling

Dialled calls


Displays dialled call duration.

All calls

Displays overall call duration.

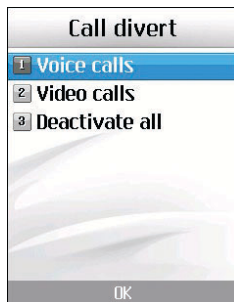
Call divert

This menu allows you to configure the call divert service which diverts incoming calls to a user-specified number.

1. Press the  key in the idle screen.
2. Press the navigation key down to select Calling and press Call divert.

Voice calls

- **All voice calls:** Diverts all incoming voice calls unconditionally.
- **If busy:** Diverts incoming voice calls when the line is busy.
- **If no answer:** Diverts incoming voice calls when there is no answer.
- **If unreachable:** Diverts incoming voice calls when the handset is turned off or the



handset is out of the network service coverage

Video calls

You can divert video calls to other 3 handsets that support video calling.

- **All video calls:** Diverts all incoming video calls unconditionally.
- **If busy:** Diverts incoming video calls when the line is busy.
- **If no answer:** Diverts incoming video calls when there is no answer.

- **If unreachable:** Diverts incoming video calls when the handset is turned off or the handset is out of the network service coverage.

Deactivate all

All call divert settings are deactivated.

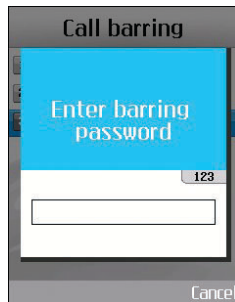
Call barring

Call barring allows you to restrict from making and receiving calls with your handset. For this function, you need the barring password, which you can obtain from 3 Customer Service.

Voice calls

The following options are available:

- **All outgoing:** Calls cannot be made.
- **Outgoing international:** International calls cannot be made.
- **Outgoing international calls except home country:** When abroad, calls can be made only to numbers within the current country and to your home country, which is where your home network provider is located.



- **All incoming:** Calls cannot be received.
- **Incoming when abroad:** Calls cannot be received when you are using your handset outside your home service area.

Video calls

The following options are available:

- **All outgoing:** Calls cannot be made.
- **Outgoing international:** International calls cannot be made.

Calling

- **Outgoing international calls except home country:** When abroad, calls can be made only to numbers within the current country and to your home country, which is where your home network provider is located.
- **All incoming:** Calls cannot be received.
- **Incoming when abroad:** Calls cannot be received when you are using your handset outside your home service area.

Deactivate all

All call barring settings are deactivated; calls can be made and received normally.

Fixed dial numbers

You can fix dialling to specified phone numbers only. This information is saved on the USIM card. You must enter your PIN2 code for authentication.

- **On:** Enables Fixed Dial Numbers.
- **Off:** Disables Fixed Dial Numbers.
- **FDN list:** You can view and edit the Fixed Dial Number list.

Call waiting

The network will notify you of a new incoming call while you have a call in progress. Select **Activate** to request the network to activate call waiting, **Deactivate** to request the network to deactivate call waiting, or **View status**, to check if the function is active or not.

Settings

Call reject

This menu allows you to enable or disable rejection of all calls or calls categorized as **Unregistered**, **Contacts** or **Groups**.

- **Reject On/Off:** To Enable or Disable the Call Reject.
- **Reject list:** To select the category of call reject numbers. You can select any of the following categories:
 - **All calls:** If this category is selected, all calls will be rejected.
 - **Contacts:** If this category is selected, all numbers in contacts list will be rejected.

- **Groups:** If this category is selected, all numbers belonging to the selected groups will be rejected.
- **Unregistered:** If this category is selected, all un-registered numbers will be rejected.
- **Reject group:** If the Reject Category 'Groups' is selected from the Reject List, the group, which has to be rejected, can be selected here.

All the available groups will be listed here. Up to three groups can be selected for rejection.

Press the right soft key [Done] after configuring the Call rejection to save the changes and go back to previous menu.

Send my number

This network service allows you to set your phone number to be displayed **On** or hidden **Off** from the person whom you are calling.



Select **Set by network** to reset the handset to the setting that you have agreed upon with 3 Customer Service.

Auto redial

The menu enables you to configure the auto redial function when a call attempt has failed.

Answer mode

Allows you to determine when to answer the handset.

- **Press send key:** You can answer an incoming call by only pressing the  key.
- **Press any key:** You can answer an incoming call by pressing any key, except the , soft keys and side keys.
- **Open slide:** This option allows you to answer a call simply by opening the slide.

Minute minder

This function sounds an alert notification every 1 minute after call connection.

BT answer mode

This menu allows you to determine when to answer an incoming call in using Bluetooth connection mode.

Calling

- **Hands-free:** You can answer an incoming call on the hands-free device that is connected with your handset.
- **Handset:** This feature allows you to answer an incoming call on the handset, even though the handset is connected with hand-free device.



And so on...

Troubleshooting

Please check to see if any problems you have encountered with the phone are described in this section before calling 3 Customer Service.

Q How do I view the list of outgoing calls, incoming calls and missed calls?

A Press the  key.

Q Why is the connection inconsistent or not audible in certain areas?

A When frequency environment is unstable in a certain area, connection may be inconsistent and not audible. Relocate to another area and try again.

Q Why does the display not turn on?

A Remove and insert the battery, then attempt to power-on. If there is no change, fully charge the battery and try again.

Q Why is there an echo when a connection is made with certain telephones in a certain area?

A This is called the 'Echo Phenomenon', where it occurs if connection volume is too high or caused by special properties (semi electronic telephone exchange) of the equipment on the other end.

Q Why does the handset heat up?

A The phone may get hot when there is a very long call duration or when games are played or when using the browser. This has no effect upon the life of the product or performance.

Q Why is there no ringtone, but only a blinking LCD screen?

A Phone may be set to 'Vibrate only' or in 'Silent' mode. In the Profiles menu, please select 'Normal' or 'Outdoor'.

Q Why does the battery life get shorter in standby mode?

A The battery is worn out. As time passes, the battery life gradually becomes shorter. If the battery lasts about half the amount of time as when first purchased, it's time to purchase a new battery.


Q Why does the battery run out so quickly during normal use?

A It is due to the user environment or a large number of calls or weak signal.

Q Why is no number dialed when you recall a Contacts entry?

A Check that the number has been stored correctly by using the Contacts feature. Re-store them, if necessary.

Q Incoming calls do-not reach me.

A Is your phone switched on ( pressed for more than three seconds)? Are you accessing the right cellular network? Or, you may have set an incoming call barring option.

Q I cannot find the lock, PIN, or PUK code. What is my PIN?

A The default lock code is '0000'. If you forget or lose the lock code, contact your phone dealer. If you forget or lose a PIN or PUK code, or if you have not received such a code, contact 3 Customer Services.

Q What happens to the handset if it is dropped?

A The handset could power off or reset, but this does not necessarily imply any permanent damage.

Accessories

Charger

This adapter allows you to charge the battery. It supports standard Europe/Australia/U.K. and Hongkong (100-240 Volt 50/60Hz outlets).

It takes 3.5 hours to charge a completely discharged battery.



Europe



Australia



U.K and Hongkong

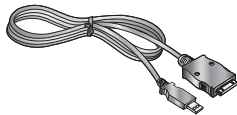
Headset

Connects to your phone, allowing hands-free operation. Includes earpiece, microphone, and integrated call answer/termination button.



USB cable

Connects your phone to a PC.



CD



Battery



Glossary

2G

Second Generation wireless communication system. 2G system supports low quality voice and low-rate packet-data service. 2G refers to GSM in European countries, and CDMA in America.

3G

Third Generation wireless communication system. 3G means next generation wireless communication system developed based on the second generation wireless communication systems. 3G system supports real-time communication service and high-rate packet-data service. 3G refers to UMTS developed based on GSM in European countries,

Access point

Access point refers to a point through which users can connect to the network so that the users can use the network services.

AMR

Adaptive Multirate codec. A voice codec developed by ETSI for GSM. AMR supports 8 coding rates (from 4.75 to 12.2Kbps) so as to adaptively provide the quality of voice service in various radio channel conditions.

Download

Download means transmitting files from one computer system to another. Downloading usually means transmitting files from a big system to a small system.

Java™

Programming language generating applications that can run on all hardware platforms, whether small, medium or large, without modification. It has been promoted for and geared heavily to the Web, both for public Web sites and Intranets. When a Java program runs from a Web page, it is called a Java applet. When it is run on a mobile phone or pager, it is called a MIDlet.

Line Identification Services (Caller ID)

Service allowing subscribers to view or block the telephone numbers of callers.

MIDI

Musical Instrument Digital Interface. A file format to save digitized musical instrumental data. The original meaning of MIDI, or Music Instrument Digital Interface is a protocol to exchange data between a computer and electric instruments.

MMS (Multimedia Message Service)

A message service for the handset environment, standardized by the WAP Forum and the 3rd Generation Partnership Program (3GPP). For phone users, MMS is similar to Short Message Service (SMS)-it provides automatic, immediate delivery of user-created content from phone to phone. The message addressing used is primarily phone numbers, thus the traffic goes from phone to phone. MMS also provides support for e-mail addressing, so that messages can also be sent by email. In addition to the text content of SMS, MMS messages can contain still images, voice

or audio clips, and later also video clips and presentation information.

MP3

Moving Picture Experts Group Layer-3 Audio. A file format to provide high-quality audio whose quality is equal to that of CD. MP3 is a digital audio standard developed by MPEG, or Moving Picture Experts Group and is widely used for digital audio files.

MPEG4

Motion Picture Experts Group 4. A digital video standard developed by MPEG, or Moving Picture Experts Group. MPEG4 compresses video data so that a large video file can be transmitted, and saved more easily. MPEG4 is suitable especially for mobile environment.

Multimedia

Multimedia means media that include various media data such as voice, character string, image, and video data. Currently, the meaning of multimedia includes services provided through multimedia.

Glossary

Multiparty Calls

Ability to establish a conference call involving up to five additional parties.

Roaming

Use of your phone when you are outside your home area (when traveling for example).

SDN (Service Dial Number)

Telephone numbers supplied by your network provider and giving access to special services, such as voice mail, directory inquiries, customer support and emergency services.

SMTP

Simple Mail Transfer Protocol. A protocol to transfer e-mails between computers over the Internet. SMTP defines the format of control messages between computers, and interaction procedures between them to send e-mails.

Quick play

Quick play means a new type of service that enables users to listen to an audio or watch video without downloading complete audio or video file so that contents providers can provide audio or video data such as movie or news over the network in real-time on users' demand.

Sync

Sync means synchronising PIM (Personal Information Management) data such as contact information, schedule, to-do, and memo with a PC or an external server.

UMTS

Universal Mobile Telephony System. UMTS refers to asynchronous 3G wireless technology of WCDMA that is developed based on GSM, the 2G wireless technology.

USB

Universal Serial Bus. A bus type interface that provides fast and flexible connection between devices and a computer.

USIM

Universal Subscriber Identity Module. An IC card used for UMTS the shape of which is the same as that of the SIM card of GSM. USIM is provided by network operator, and carries the authentication and service grade data for the network operator as well as user-specific data.

Video call

A communications service that enables users to talk watching each other over a 64Kbps data channel. Real-time video call service is a new type of service provided by WCDMA wireless communication system that is developed based on GSM+GPRS technology.

Voice mail

Computerised answering service that automatically answers your calls when you are not available, plays a greeting and records a message.

Index

A

Access Codes.....	28
Access points.....	52
Add new.....	57, 86
Alarm clock.....	103
AMR.....	124
Answer mode.....	117

B

Backlight.....	43
Barring Password.....	29
Battery.....	23
Battery Information.....	19
Battery level.....	25
Browser.....	56

C

Calculator.....	106
Calendar.....	94
Call barring.....	115
Call divert.....	114
Call diverting.....	25
Caller ID.....	125
Camera.....	82
Change codes.....	53
Charger.....	122
Charging the Battery.....	18
Confirmation tone.....	47

D

Dialled calls.....	113
Display Information.....	25
Download.....	124

E

Entering Text.....	31
--------------------	----

F

Fixed dial numbers.....	116
Slide tone.....	47
Font.....	42

H

Handset lock.....	53
Headset.....	123
Home.....	56

I

Inbox.....	66
------------	----

J

Java.....	124
-----------	-----

K

Key tone.....	47
Key tone volume.....	47

L

Language.....	54
Line Identification Services	125

M

Mailbox.....	67
Memo	98
Memo Add	98
Memo Delete	98
Memory status	54, 75, 77
Message alert.....	47
Message tone.....	47
MIDI	125
Missed calls.....	113
MMS.....	125
MP3	125
MPEG4	125
Multimedia	82, 125
Multimedia Message Service.....	125

N

Network.....	51
--------------	----

O

Open slide.....	31, 117
Own number.....	87

P

PIN code.....	28
PIN code request	52
PIN2 code.....	28
Press any key	117
Press send key.....	117
Profiles.....	46, 58
PUK code	28
PUK2 code.....	28

Q

Quick menu	102
Quick play	126

R

Received calls.....	113
Roaming	126
Roaming service	25

S

Screen.....	42
Screen theme	42
SDN	126
Search.....	86
Secret memo	98
Security.....	52, 58
Security code	29, 53
Service dial numbers	87
Signal Strength	31
SMTP	126
Speed dials	86
Switch on sound	47
Switch off sound	47

Index

T

T9	32
Templates	69
To do	96
To do Delete.....	97
To do Enquiry	96

U

UMTS	126
Unit converter	107
USB	126
USB cable	123
USIM	127
USIM memory.....	54

V

Vibrate only.....	25, 46
Video calls.....	112, 114, 115
Video camera	82
Video ringtone	46
Voice call	114, 115

Voice mail	127
Voice message	25
Voice recorder	83
Voice ringtone.....	46
Volume	109

W

World time.....	106
-----------------	-----

3G.....	124
3G network	25
2G network	25

Declaration of Conformity



LG Electronics

Suppliers Details

Name

LG Electronics Inc

Address

LG Electronics Inc, LG Twin Towers 20,
Yeouido-dong, Yeongdeungpo-gu, Seoul, Korea 150-721

Product Details

Product Name

E-GSM 900 / GSM 1800 / GSM 1900 / W-CDMA Terminal Equipment

Model Name

U400(C)

Trade Name

LG

CE 0889

Applicable Standards Details

R&TTE Directive 1999/5/EC

ETSI EN 301 489-01 V1.5.1, ETSI EN 301 489-07 V1.2.1
ETSI EN 301 489-17 V1.2.1, ETSI EN 301 489-24 V1.2.1
ETSI TS 151 010-1 V5.9.0 specified by ETSI EN 301 511 V9.0.2
ETSI TS 134 121 V5.5.0 specified by ETSI EN 301 908-2 V2.2.1
ETSI EN 301 908-1 V2.2.1, ETSI EN 300 328 V1.4.1
EN 50360:2001; EN 50361:2001
EN 60950 : 2001

Supplementary Information

The conformity to above standards is verified by RFI with Certificate No.SC71584JD16.
It is stated in Report No. NB71584JD16.

Declaration

I hereby declare under our sole responsibility that the product mentioned above to which this declaration relates complies with the above mentioned standards and Directives

Name

Jin Seog, KIm / Director

Issued Date

30. May 2006

LG Electronics Inc. Amsterdam Office
Valuwezoom 15, 1327 AE Almere, The Netherlands
Tel : +31 - 36-547 - 6640, e-mail : seokim @ lge.com


Signature of representative

Free Manuals Download Website

<http://myh66.com>

<http://usermanuals.us>

<http://www.somanuals.com>

<http://www.4manuals.cc>

<http://www.manual-lib.com>

<http://www.404manual.com>

<http://www.luxmanual.com>

<http://aubethermostatmanual.com>

Golf course search by state

<http://golfingnear.com>

Email search by domain

<http://emailbydomain.com>

Auto manuals search

<http://auto.somanuals.com>

TV manuals search

<http://tv.somanuals.com>