

User's Guide

W1946T
W1946TN
W2046T
W2246T
W2346T
W1946S
W1946SN
W2046S
W2246S
W2346S

Make sure to read **Safety Precautions** before using this product.

Keep the User's Guide (CD) in an accessible place for future reference.

See the attached label on the unit and show this information to your dealer when asking for service.



Please read these safety precautions carefully before using the product.



Warning

Failure to follow those warnings may result in death, serious injury or damage to the product or other property.

Electrical Power Related Precautions



Warning

- **Use only the power cord supplied with the unit or another manufacturer authorized cord.**
 - Failure to do so may result in fire or electrical shock or damage to the product.
- **Use only a properly grounded plug and receptacle.**
 - If you do not you may be electrocuted or injured. Or the product might be damaged.
- **Do not use a damaged or loose plug.**
 - This may cause electrical shock or fire.
- **Operate the display only from a power source(i.e. voltage) indicated in the product specification.**
 - Otherwise the product can be damaged, fire can occur or you may be electrocuted. If you are not sure what type of power supply you have, consult a certified electrician.
- **In the presence of thunder and lightning, never touch the power cord and signal cable because it can be very dangerous.**
 - It can cause electric shock.
- **Do not connect several extension cords, electrical appliances or electrical heaters to a single outlet. Use a power bar with a grounding terminal designed for exclusive use with the computer.**
 - A fire can break out due to overheating.
- **Do not touch the power plug with wet hands. Additionally, if the cord pin is wet or covered with dust, dry the power plug completely or wipe dust off before plugging in the cord.**
 - You may be electrocuted due to excess moisture.
- **If you don't intend to use the product for a long time, unplug the power cable from the product.**
 - Covering dust can cause a fire, or insulation deterioration can cause electric leakage, electric shock or fire.
- **Insert the power plug firm so it cannot come loose.**
 - A loose connect can cause fire.
- **Hold the plug when pulling out the power cable. Do not pull the plug out by the wire. Do not bend the power cord with excessive force or put heavy objects on the power cord.**
 - The power line can be damaged, which may cause electric shock or fire.
- **Do not insert conductive material (ea. metal chopstick) into the product opening into one end of the power cable while the other end is plugged in. Additionally, do not touch the power cable right after plugging into the wall input terminal.**
 - You may be electrocuted.
- **The power supply cord is used as the main disconnection device. Ensure that the socket-outlet shall be installed near the equipment and shall be easily accessible.**
- **Do not unplug the power cord while the product is in use.**
 - Electrical shock can damage the product.
- **As long as this unit is connected to the AC wall outlet, it is not disconnected from the AC power source even if the unit is turned off.**

Precautions in installing the Product

Warning

- **Keep away from heat sources like electrical heaters, curdles or other open flames.**
 - Electrical shock, fire, malfunction or deformation may occur.
- **Keep the packing anti-moisture material or vinyl packing out of the reach of children.**
 - Anti-moisture material is harmful if swallowed. If swallowed by mistake, force the patient to vomit and visit the nearest hospital. Additionally, vinyl packing can cause suffocation. Keep it out of the reach of children.
- **Do not put heavy objects on the product on sit upon it.**
 - If the product collapses or is dropped, you may be injured. Children must pay particular attention.
- **Do not leave the power or signal cable when someone can trip over it.**
 - The passerby can falter, which can cause electrical shock, fire, product breakdown or injury.
- **Install the product in a neat and dry place. Do not use near water.**
 - Dust or moisture can cause electrical shock, fire or product damage.
- **Do not add accessory that have not been designed for this display.**
- **If you smell smoke or other odors or hear a strange sound from the product unplug the power cord and contact the service center.**
 - If you continue to use without taking proper measures, electrical shock or fire can occur.
- **If you dropped the product or the case is broken, turn off the product and unplug the power cord.**
 - If you continue to use without taking proper measures, electrical shock or fire can occur. Contact the service center.
- **Do not drop an object on or apply impact to the product. Do not throw any toys or objects at the product.**
 - It can cause injury to humans, problems to the product and damage the display.
- **Keep out of reach of children and do not place toys near the product.**
- **Make sure the product ventilation hole is not blocked. Install the product more than 10cm from the wall.**
 - If you install the product too close to the wall, it may be deformed or fire can break out due to internal heat build-up.
- **Do not cover the product with cloth or other material (eg. plastic) while plugged in.**
 - The product can be deformed or fire can break out due to internal overheating inside the product.
- **Place the product on a flat and stable surface that is large enough to support the product.**
 - If the product is dropped, you may be injured or the product may be broken.
- **Install the product where no Electromagnetic Interference occurs.**
- **Keep the product away from direct sunlight.**
 - The product can be damaged.
- **Do not place the product on the floor.**
 - Small Children and others may trip over it.

Precautions in Moving the Product

Warning

- **Make sure to turn off the product.**
 - You may be electrocuted or the product can be damaged.
- **Make sure to remove all cables before moving the product.**
 - You may be electrocuted or the product can be damaged.
- **When lifting or moving the product, do not hold it upside down while holding only the stand.**
 - This may cause the product to fall resulting in damage or injury.
- **Do not shock the product when moving it.**
 - You may be electrocuted or the product can be damaged.

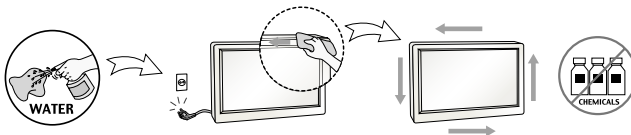
Safety Precautions

- **Make sure the panel faces forward and hold it with both hands to move.**
 - If you drop the product, the damaged product can cause electric shock or fire. Contact an authorized the service center for repair.
- **Do not place the product face down.**
 - This may damage the TFT-LCD screen.

● Precautions in Using/Cleaning the Product

⚠ Warning

- **Do not attempt to disassemble, repair or modify the product yourself.**
 - Fire or electric shock can occur.
 - Contact the service center for repair.
- **When cleaning the product, unplug the power cord and scrub gently with a soft cloth to prevent scratching. Do not clean with a wet cloth. Or spray water or other liquids directly onto the product. An electric shock may occur. (Do not use chemicals such as benzene, paint thinners or alcohol)**
- **Keep the product away from water.**
 - Fire or electric shock accident can occur.
- **Avoid high temperatures and humidity.**
- **Do not put or store flammable substances near the product.**
 - There is a danger of explosion or fire.
- **Keep the product clean at all times.**
- **Take a comfortable and natural position when working with a product to relax the muscles.**
- **Take a regular break when working with a product for a long time.**
- **Do not press on the panel with a hand or sharp object such as nail, pencil or pen, or make a scratch on it.**
- **Keep proper distance from the product and rest from time-to-time.**
 - Your vision may be impaired if you look at the product too closely or for too long.
- **Set the appropriate resolution by referring to the User's Guide.**
 - Your vision can be impaired.
- **Keep small accessories out of the reach of children.**
- **Leaving a fixed image on the screen for a long time may cause damage to the screen and cause image burn-in. Make sure to use a screen saver on the product. Burn-in and related problems are not covered by the warranty on this product.**
- **Spray water onto a soft cloth 2 to 4 times, and use it to clean the front frame; wipe in one direction only. Too much moisture may cause staining.**



● On Disposal (Only, Hg lamp used LCD Monitor)

- **The fluorescent lamp used in this product contains a small amount of mercury.**
- **Do not dispose of this product with general household waste.**
- **Disposal of this product must be carried out in accordance to the regulations of your local authority.**

NOTE

- The manufacturer is not responsible for any radio or TV interference caused by unauthorized modifications to this equipment. Such modifications could void the user's authority to operate the equipment.

NOTE

- This equipment has been tested and found to comply with the limits for a class B digital device, pursuant to part 15 of the FCC Rules. These limits are designed to provide reasonable protection against harmful interference in a residential installation. This equipment generates, uses and can radiate radio frequency energy and, if not installed and used in accordance with the instructions, may cause harmful interference to radio communications. However, there is no guarantee that interference will not occur in a particular installation. If this equipment does cause harmful interference to radio or television reception, which can be determined by turning the equipment off and on, the user is encouraged to try to correct the interference by one or more of the following measures:

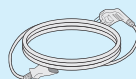
- Reorient or relocate the receiving antenna.
- Increase the separation between the equipment and the receiver.
- Connect the equipment into an outlet on a circuit different from that to which the receiver is connected.
- Consult the dealer or an experienced radio/TV technician for help.

!!! Thank for selecting LGE products !!!

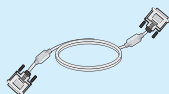
- Please make sure the following items are included with your monitor. If any items are missing, contact your dealer.



User's Guide/Cards

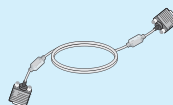


Power Cord



DVI-D Signal Cable

(This feature is not available in all countries.)
(Only W1946T/W1946TN/W2046T/
W2246T/W2346T)



15-pin D-Sub Signal Cable

(To set it up, this signal cable may be attached to this product before shipping out.)

NOTE

- This accessories may look different from those shown here.
- User must use shielded signal interface cables (D-sub 15 pin cable, DVI-D cable) with ferrite cores to maintain standard compliance for the product.

Connecting the Display

- Before setting up the monitor, ensure that the power to the monitor, the computer system, and other attached devices is turned off.

Connecting the stand

1. Place the monitor with its front facing downward on a soft cloth.



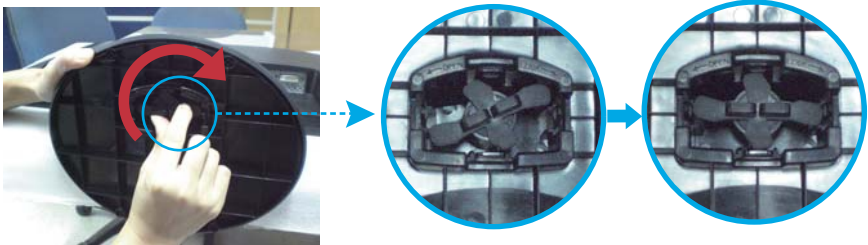
2. Assemble the Stand Body into the product in the correct direction as shown in the picture. Make sure you push it until you hear it "click".



3. Assemble the Stand Base(Front, Rear) into the Stand Body in the correct direction.



4. Tie down the base lock to perpendicularity direction.



5. Once assembled take the monitor up carefully and face the front side.

Important

- This illustration depicts the general model of connection. Your monitor may differ from the items shown in the picture.
- Do not carry the product upside down holding only the stand base. The product may fall and get damaged or injure your foot.

Disassembling the stand

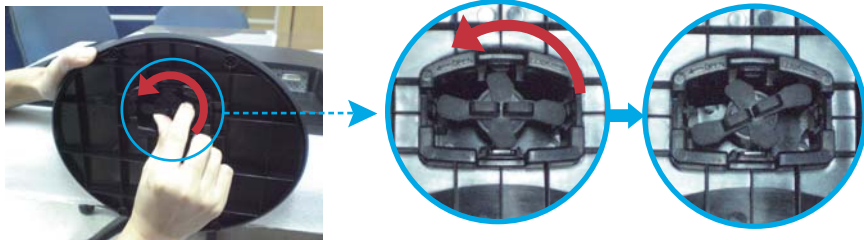
1. Put a cushion or soft cloth on a flat surface.



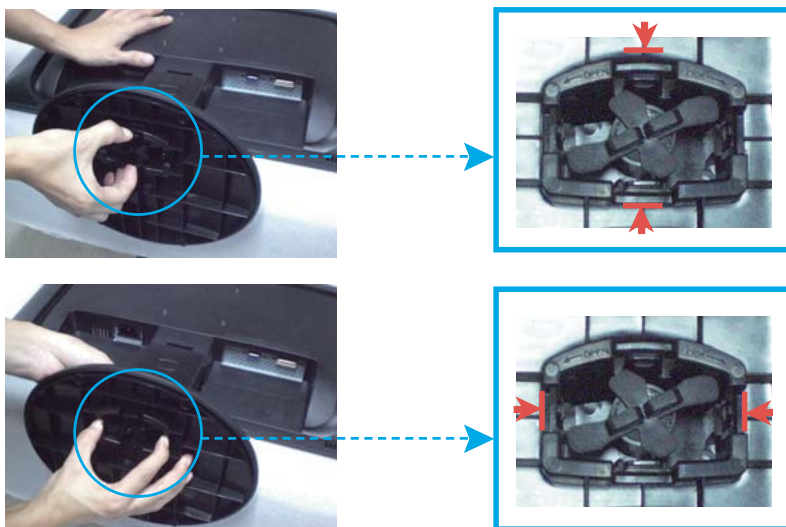
2. Place the monitor face Down on the cushion or soft cloth.



3. Change your lock on the product as it follows and turn it in the arrow direction.



If you can't release the stand base even the locking knob is at a release position, Please push the indicated knob down and retry it.



Connecting the Display

4. Pull out the Stand to remove.



5. Pushing the PUSH button, Take the stand body from hinge body.



Good Position



Bad Position

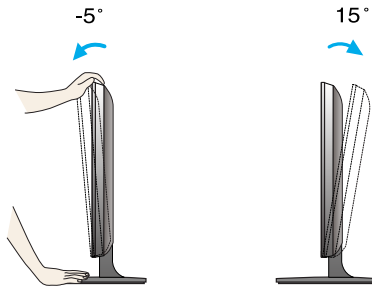
Warning:
You can hurt your finger.

- Before setting up the monitor, ensure that the power to the monitor, the computer system, and other attached devices is turned off.

Positioning your display

-After installation, adjust the angle as shown below.

1. Adjust the position of the panel in various ways for maximum comfort.
 - Tilt Range : -5° to 15°



- Do not touch or press the screen when adjusting the angle of the monitor.
- When adjusting the angle of the screen, do not put your finger(s) in between the head of the monitor and the stand body. You can hurt your finger(s).



ERGONOMIC

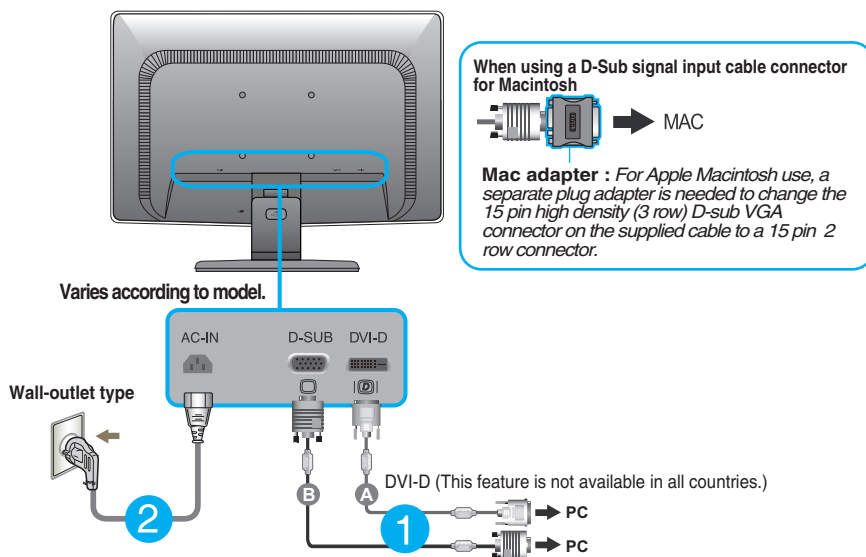
- It is recommended that in order to maintain an ergonomic and comfortable viewing position, the forward tilt angle of the monitor should not exceed 5 degrees.

Connecting with the PC

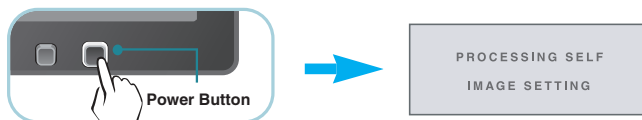
1. Before setting up the monitor, ensure that the power to the monitor, the computer system, and other attached devices is turned off.
2. Connect signal input cable **1** and power cord **2** in order, then tighten the screw of the signal cable.
 - A Connect DVI-D(Digital signal) Cable
 - B Connect D-sub(Analog signal) Cable

NOTE

- This is a simplified representation of the rear view.
- This rear view represents a general model; your display may differ from the view as shown.



3. Press the power button on the front panel to turn the power on. When monitor power is turned on, the 'Self Image Setting Function' is executed automatically. (Only Analog Mode)



NOTE

'Self Image Setting Function'? This function provides the user with optimal display settings. When the user connects the monitor for the first time, this function automatically adjusts the display to optimal settings for individual input signals.

'AUTO' Function? When you encounter problems such as blurry screen, blurred letters, screen flicker or tilted screen while using the device or after changing screen resolution, press the AUTO function button to improve resolution.

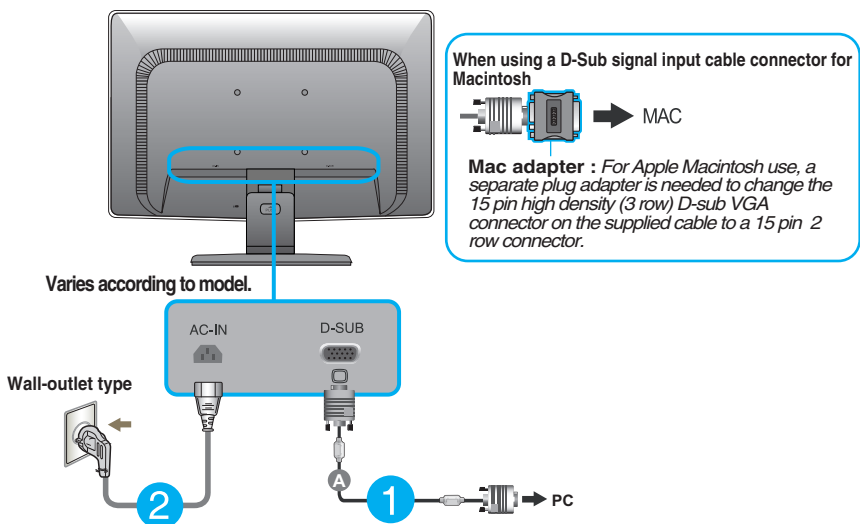
Connecting with the PC

1. Before setting up the monitor, ensure that the power to the monitor, the computer system, and other attached devices is turned off.
2. Connect signal input cable ① and power cord ② in order, then tighten the screw of the signal cable.

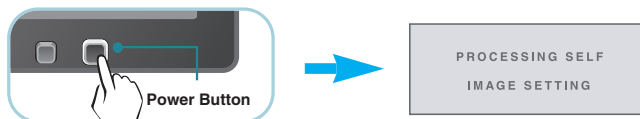
Ⓐ Connect D-sub(Analog signal) Cable

NOTE

- This is a simplified representation of the rear view.
- This rear view represents a general model; your display may differ from the view as shown.



3. Press the power button on the front panel to turn the power on. When monitor power is turned on, the 'Self Image Setting Function' is executed automatically.



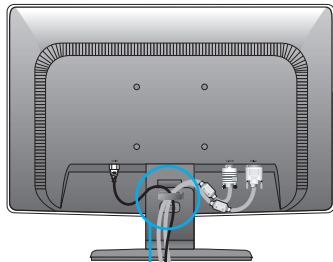
NOTE

'Self Image Setting Function'? This function provides the user with optimal display settings. When the user connects the monitor for the first time, this function automatically adjusts the display to optimal settings for individual input signals.

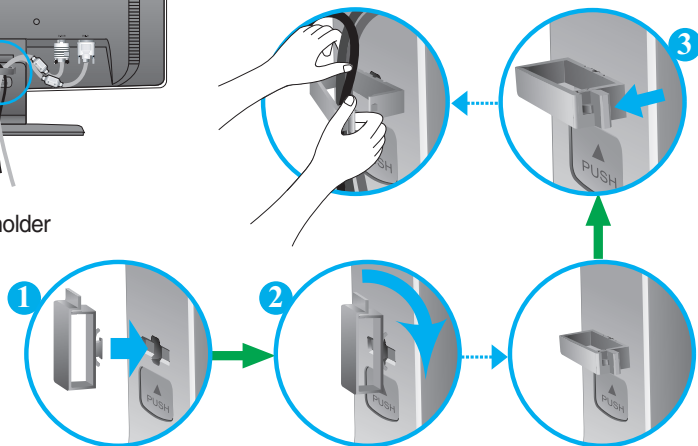
'AUTO' Function? When you encounter problems such as blurry screen, blurred letters, screen flicker or tilted screen while using the device or after changing screen resolution, press the AUTO function button to improve resolution.

Using the cable holder (This feature is not available in all models.)

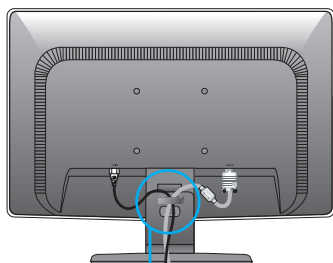
■ W1946T/W1946TN/W2046T



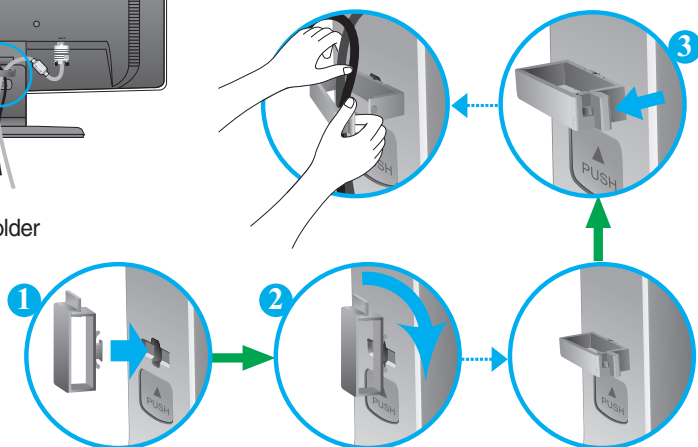
Cable holder



■ W1946S/W1946SN/W2046S

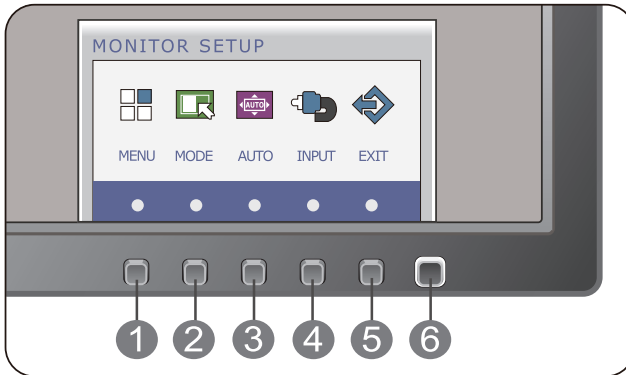


Cable holder

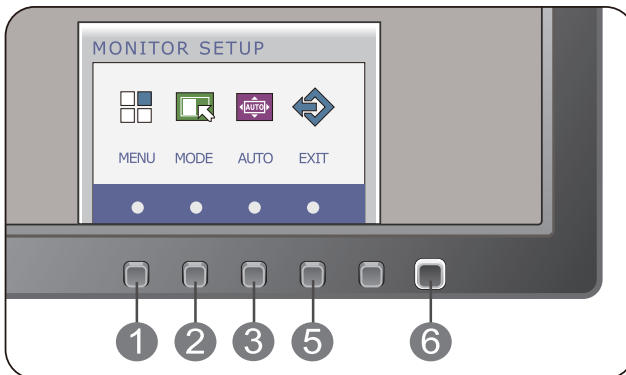


Front Panel Controls

■ W1946T/W1946TN/W2046T/W2246T/W2346T



■ W1946S/W1946SN/W2046S/W2246S/W2346S



1 MENU Button

OSD LOCKED/UNLOCKED

This function allows you to lock the current control settings, so that they cannot be inadvertently changed. Press and hold the **MENU button** for several seconds. The message "OSD LOCKED" should appear.

OSD LOCKED

OSD UNLOCKED

You can unlock the OSD controls at any time by pushing the **MENU button** for several seconds. The message "OSD UNLOCKED" should appear.

-
- 2 MODE Button** Use this button to enter **F-ENGINE, ORIGINAL RATIO** menus.
For more information, refer to page 21.
-

3 AUTO Button



AUTO IMAGE ADJUSTMENT

When adjusting your display settings, always press the **AUTO** button before entering the On Screen Display(OSD). (Only Analog Mode)

This will automatically adjust your display image to the ideal settings for the current screen resolution size (display mode).

The best display mode is

W1946S/W1946SN/W1946T/W1946TN : 1360 x 768

W2046S/W2046T : 1600 x 900

W2246S/W2346S/W2246T/W2346T : 1920 x1080

4 INPUT Button (SOURCE Hot key)

When two input signals are connected, you can select the input signal (D-SUB/DVI) you want. When only one signal is connected, it is automatically detected. The default setting is D-Sub.

(Only W1946T/W1946TN/W2046T/W2246T/W2346T)

5 EXIT Button

Exit the OSD(On Screen Display).

6 Power Button & Power Indicator

Use this button to turn the display on or off.

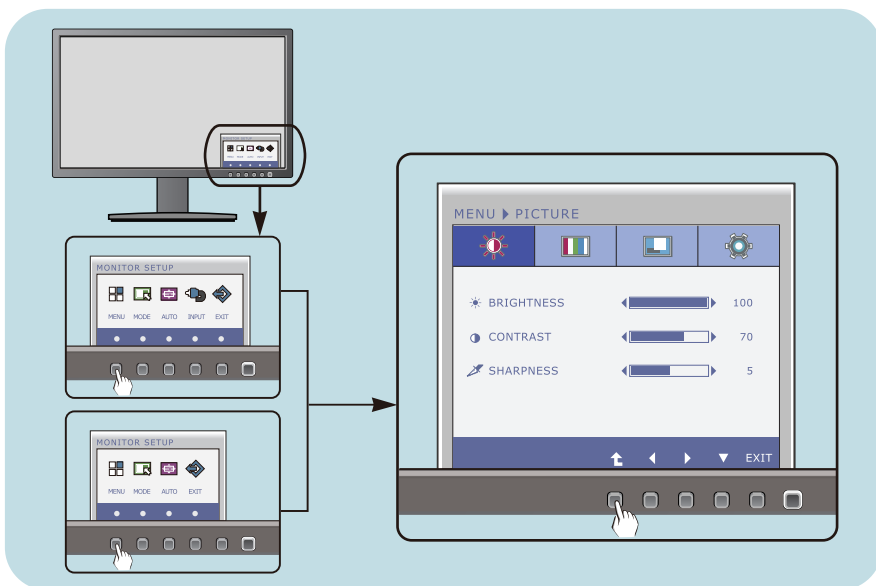
The power indicator stays white if the display is running properly (On Mode). If the display is in Sleep Mode (Energy Saving), the power indicator is blinking white.

Screen Adjustment

Making adjustments to the image size, position and operating parameters of the display is quick and easy with the On Screen Display Control system.

A short example is given below to familiarize you with the use of the controls. The following section is an outline of the available adjustments and selections you can make using the OSD.

To make adjustments in the On Screen Display, follow these steps:



- 1 Press the discretionary **Button**, then the main menu of the OSD appears.
- 2 To access a control, use the corresponding **Buttons**.
- 3 Use the **◀/▶ Buttons** to adjust the image to the desired level.
Use the **↑ Button** to select other sub-menu items.
- 4 Press the **EXIT Button** to exit from the OSD.

On Screen Display(OSD) Selection and Adjustment

The following table indicates all the On Screen Display control, adjustment, and setting menus.

DSUB : D-SUB(Analog signal) input

DVI-D : DVI-D(Digital signal) input

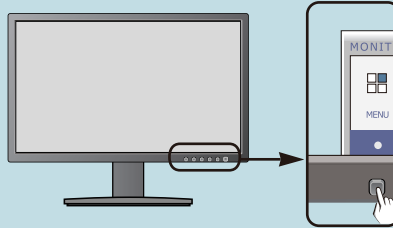
Main menu	Sub-menu	Supported input	Description
PICTURE	BRIGHTNESS	DSUB	To adjust the brightness, contrast and sharpness of the screen
	CONTRAST	DVI-D	
	SHARPNESS		
COLOR	COLOR TEMP (PRESET / USER)	DSUB DVI-D	To customize the color of the screen
	GAMMA		
DISPLAY	HORIZONTAL VERTICAL	DSUB	To adjust the position of the screen
	CLOCK PHASE	DSUB	
OTHERS	LANGUAGE POWER INDICATOR	DSUB DVI-D	To customize the screen status for a user's operating environment
	WHITE BALANCE	DSUB	
	FACTORY RESET	DSUB DVI-D	
F-ENGINE	NORMAL	DSUB	To select or customize desired image settings
	MOVIE	DVI-D	
	INTERNET		
	DEMO		
ORIGINAL RATIO	WIDE	DSUB	To adjust the image size
	ORIGINAL	DVI-D	

NOTE

- The order of icons may differ depending on the model (16~23).

On Screen Display(OSD) Selection and Adjustment

- ■ ■ You were introduced to the procedure of selecting and adjusting an item using the OSD system. Listed below are the icons, icon names, and icon descriptions of the all items shown on the Menu.



Press the **MENU** Button, then the main menu of the OSD appears.

Menu Name — MENU ▶ PICTURE

Icons — [Sun icon], [Flag icon], [Window icon], [Gear icon]

Sub-menus — BRIGHTNESS (100), CONTRAST (70), SHARPNESS (5)

Button Tip

- EXIT : Exit
- ◀▶ : Adjust (Decrease/Increase)
- ▼ : Select another sub-menu
- ⬆ : Restart to select sub-menu

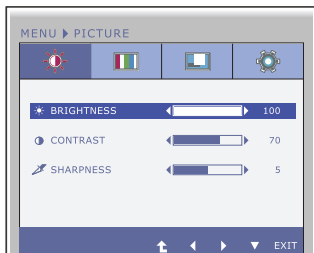
NOTE

- OSD (On Screen Display) menu languages on the monitor may differ from the manual.

Main menu	Sub menu	Description
-----------	----------	-------------



PICTURE



BRIGHTNESS To adjust the brightness of the screen.

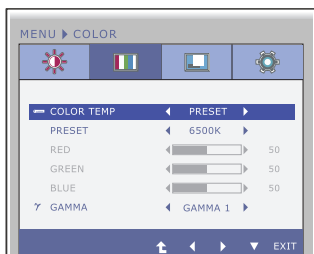
CONTRAST To adjust the contrast of the screen.

SHARPNESS To adjust the clearness of the screen.

- **Exit** : Exit
- ◀ : Decrease
- ▶ : Increase
- ▼ : Select another sub-menu
- ⬆ : Restart to select sub-menu



COLOR



COLOR TEMP

PRESET

Select the screen color.

- sRGB: Set the screen color to fit the sRGB standard color specification.
- 6500K-7500K: Red screen color.
- 8500K-9300K: Blue screen color.

- **Exit** : Exit
- ◀ : Decrease
- ▶ : Increase
- ▼ : Select another sub-menu
- ⬆ : Restart to select sub-menu

USER

- **RED**
Set your own red color levels.
- **GREEN**
Set your own green color levels.
- **BLUE**
Set your own blue color levels.

GAMMA

Set your own gamma value. : 0 / 1 / 2
On the monitor, high gamma values display whitish images and low gamma values display blackish images.

Main menu	Sub menu	Description
-----------	----------	-------------



DISPLAY

W1946T/W1946TN/W2046T/W2246T/W2346T



HORIZONTAL To move image left and right.

VERTICAL To move image up and down.



CLOCK To minimize any vertical bars or stripes visible on the screen background.
The horizontal screen size will also change.

W1946S/W1946SN/W2046S/W2246S/W2346S



PHASE To adjust the focus of the display.
This item allows you to remove any horizontal noise and clear or sharpen the image of characters.

- **Exit** : Exit
- ◀ : Decrease
- ▶ : Increase
- ▼ : Select another sub-menu
- ⬆ : Restart to select sub-menu

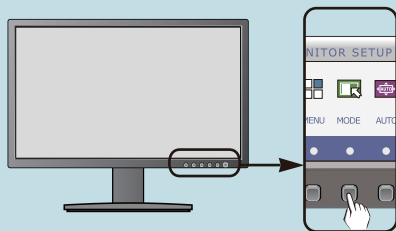
Main menu	Sub menu	Description
	OTHERS	
	LANGUAGE	To choose the language in which the control names are displayed.
	POWER INDICATOR	Use this function to set the power indicator on the front side of the monitor to ON or OFF . If you set OFF , it will go off. If you set ON at any time, the power indicator will automatically be turned on.
<ul style="list-style-type: none">■ Exit : Exit■ ◀ : Decrease■ ▶ : Increase■ ▼ : Select another sub-menu■ ⬆ : Restart to select sub-menu	WHITE BALANCE	If the output of the video card is different the required specifications, the color level may deteriorate due to video signal distortion. Using this function, the signal level is adjusted to fit into the standard output level of the video card in order to provide the optimal image. Activate this function when white and black colors are present in the screen.
	FACTORY RESET	Restore all factory default settings except " LANGUAGE ." Press the ◀, ▶ buttons to reset immediately.

NOTE

- If this does not improve the screen image, restore the factory default settings. If necessary, execute the WHITE BALANCE function again. This function will be enabled only when the input signal is an analog signal.

On Screen Display(OSD) Selection and Adjustment

- ■ ■ You were introduced to the procedure of selecting and adjusting an item using the OSD system. Listed below are the icons, icon names, and icon descriptions of the all items shown on the Menu.



Press the **MODE** Button, then the main menu of the OSD appears.

Menu Name — MODE > f+ENGINE

Icons — [NORMAL] [MOVIE] [INTERNET] [DEMO]

Sub-menus — [NORMAL] [MOVIE] [INTERNET] [DEMO]


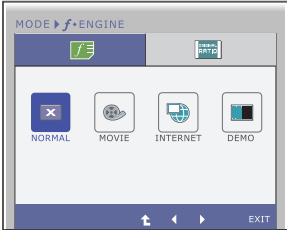
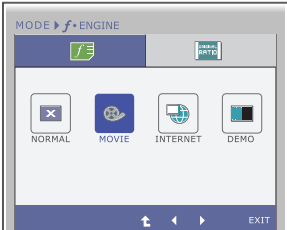
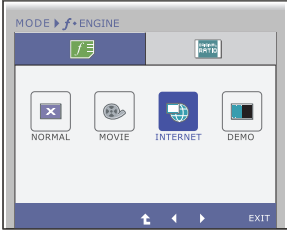
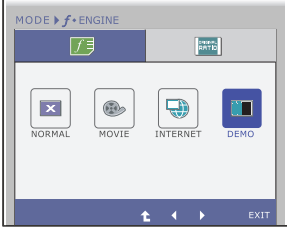
Button Tip

- EXIT : Exit
- ◀▶ : Move
- ↑ : Select another sub-menu

NOTE

- OSD (On Screen Display) menu languages on the monitor may differ from the manual.

On Screen Display(OSD) Selection and Adjustment

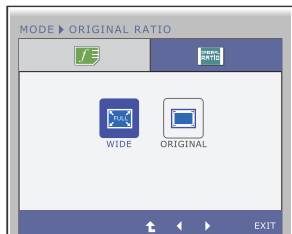
Main menu	Sub menu	Description
	f• ENGINE	
	NORMAL	Select this when you want to use the product in the most general using environment.
	MOVIE	Select this when you are watching a video or movie.
	INTERNET	Select this when you are working on the document (Word etc.)
	DEMO	This is used for advertising in the store. The screen will be divided to show the standard mode on the left and video mode on the right so that the consumers can check the difference after applying the video mode.

- **Exit** : Exit
- ◀▶ : Move
- ⬆ : Select another sub-menu

On Screen Display(OSD) Selection and Adjustment

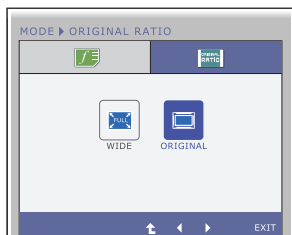
Main menu	Sub menu	Description
-----------	----------	-------------

 **ORIGINAL RATIO**






WIDE

Switch to full screen mode according to input image signal.



ORIGINAL Change the input image signal ratio to original.

* This function works only if input resolution is lower than monitor ratio (16:9).

- **Exit** : Exit
-   : Move
-  : Select another sub-menu

Check the following before calling for service.

No image appears	
<ul style="list-style-type: none">● Is the power cord of the display connected?	<ul style="list-style-type: none">• Check and see if the power cord is connected properly to the power outlet.
<ul style="list-style-type: none">● Is the power indicator light on?	<ul style="list-style-type: none">• Press the Power button.
<ul style="list-style-type: none">● Is the power indicator flickering?	<ul style="list-style-type: none">• If the display is in power saving mode, try moving the mouse or pressing any key on the keyboard to bring up the screen.• Try to turn on the PC.
<ul style="list-style-type: none">● Do you see an "OUT OF RANGE" message on the screen?	<ul style="list-style-type: none">• This message appears when the signal from the PC (video card) is out of horizontal or vertical frequency range of the display. See the 'Specifications' section of this manual and configure your display again.
<ul style="list-style-type: none">● Do you see a "CHECK SIGNAL CABLE" message on the screen?	<ul style="list-style-type: none">• This message appears when the signal cable between your PC and your display is not connected. Check the signal cable and try again.

Do you see a "OSD LOCKED" message on the screen?	
<ul style="list-style-type: none">● Do you see "OSD LOCKED" when you push MENU button?	<ul style="list-style-type: none">• You can secure the current control settings, so that they cannot be inadvertently changed. You can unlock the OSD controls at any time by pushing the MENU button for several seconds: the message "OSD UNLOCKED" will appear.

Display image is incorrect

- | | |
|---|--|
| <ul style="list-style-type: none">● Display Position is incorrect. | <ul style="list-style-type: none">• Press the AUTO button to automatically adjust your display image to the ideal setting. If the results are unsatisfactory, adjust the image position using the H position and V position icon in the on screen display. |
| <ul style="list-style-type: none">● On the screen background, vertical bars or stripes are visible. | <ul style="list-style-type: none">• Press the AUTO button to automatically adjust your display image to the ideal setting. If the results are unsatisfactory, decrease the vertical bars or stripes using the CLOCK icon in the on screen display. |
| <ul style="list-style-type: none">● Any horizontal noise appearing in any image or characters are not clearly portrayed. | <ul style="list-style-type: none">• Press the AUTO button to automatically adjust your display image to the ideal setting. If the results are unsatisfactory, decrease the horizontal bars using the PHASE icon in the on screen display.• Check Control Panel --> Display --> Settings and adjust the display to the recommended resolution or adjust the display image to the ideal setting. Set the color setting higher than 24 bits (true color). |

IMPORTANT

- Check **Control Panel --> Display --> Settings** and see if the frequency or the resolution were changed. If yes, readjust the video card to the recommend resolution.
- If the recommended resolution (optimal resolution) is not selected, letters may be blurred and the screen may be dimmed, truncated or biased. Make sure to select the recommend resolution.
- The setting method can differ by computer and O/S (Operation System), and resolution mentioned above may not be supported by the video card performance. In this case, please ask to the computer or the video card manufacturer.

Display image is incorrect

- | | |
|--|---|
| <ul style="list-style-type: none">● The screen color is mono or abnormal. | <ul style="list-style-type: none">• Check if the signal cable is properly connected and use a screwdriver to fasten if necessary.• Make sure the video card is properly inserted in the slot.• Set the color setting higher than 24 bits (true color) at Control Panel - Settings. |
| <ul style="list-style-type: none">● The screen blinks. | <ul style="list-style-type: none">• Check if the screen is set to interlace mode and if yes, change it to the recommend resolution. |

Do you see an "Unrecognized monitor, Plug&Play (VESA DDC) monitor found" message?

- | | |
|---|---|
| <ul style="list-style-type: none">● Have you installed the display driver? | <ul style="list-style-type: none">• Be sure to install the display driver from the display driver CD (or diskette) that comes with your display. Or, you can also download the driver from our web site: http://www.lge.com.• Make sure to check if the video card supports Plug&Play function. |
|---|---|

Display	TFT (Thin Film Transistor) LCD (Liquid Crystal Display) Panel, Anti-Glare coating 47.0 cm visible diagonal (18.5 inch) 0.300 x 0.300 mm (Pixel pitch)	
Sync Input	Horizontal Freq. Vertical Freq. Input Form	30 kHz to 61 kHz (Automatic) 56 Hz to 75 Hz (Automatic) Separate Sync. SOG (Sync On Green), Digital
Video Input	Signal Input Input Form	15 pin D-Sub Connector DVI-D Connector (Digital) RGB Analog (0.7 Vp-p/ 75 ohm), Digital
Resolution	Max Recommend	VESA 1360 x 768 @60 Hz VESA 1360 x 768 @60 Hz
Plug&Play	DDC 2B(Digital),DDC2AB(Anlaog)	
Power Consumption	On Mode Sleep Mode Off Mode	: 22 W(Typ.) ≤ 0.5 W ≤ 0.5 W
Dimensions & Weight	With Stand	Without Stand
	Width 44.26 cm (17.42 inch) Height 35.62 cm (14.02 inch) Depth 16.99 cm (6.68 inch)	Width 44.26 cm (17.42 inch) Height 26.67 cm (10.50 inch) Depth 6.04 cm (2.37 inch)
	Weight(excl. packing)	3.0 kg (6.66 lb)
Range	Tilt : -5° to 15°	
Power Input	AC 100-240 V~ 50 / 60 Hz 0.8 A	
Environmental Conditions	Operating Conditions	
	Temperature Humidity	10 °C to 35 °C 10 % to 80 % non-Condensing
	Storage Conditions	
	Temperature Humidity	-20 °C to 60 °C 5 % to 90 % non-Condensing
Stand Base	Attached (<input type="checkbox"/>), Detached (<input type="radio"/>)	
Power cord	Wall-outlet type	

NOTE

- Information in this document is subject to change without notice.

Display	TFT (Thin Film Transistor) LCD (Liquid Crystal Display) Panel, Anti-Glare coating 47.0 cm visible diagonal (18.5 inch) 0.300 x 0.300 mm (Pixel pitch)	
Sync Input	Horizontal Freq. Vertical Freq. Input Form	30 kHz to 61 kHz (Automatic) 56 Hz to 75 Hz (Automatic) Separate Sync. SOG (Sync On Green)
Video Input	Signal Input Input Form	15 pin D-Sub Connector RGB Analog (0.7 Vp-p/ 75 ohm)
Resolution	Max Recommend	VESA 1360 x 768 @60 Hz VESA 1360 x 768 @60 Hz
Plug&Play	DDC 2AB	
Power Consumption	On Mode Sleep Mode Off Mode	: 22 W(Typ.) ≤ 0.5 W ≤ 0.5 W
Dimensions & Weight	With Stand	Without Stand
	Width 44.26 cm (17.42 inch) Height 35.62 cm (14.02 inch) Depth 16.99 cm (6.68 inch)	Width 44.26 cm (17.42 inch) Height 26.67 cm (10.50 inch) Depth 6.04 cm (2.37 inch)
	Weight(excl. packing)	3.0 kg (6.66 lb)
Range	Tilt : -5° to 15°	
Power Input	AC 100-240 V~ 50 / 60 Hz 0.8 A	
Environmental Conditions	Operating Conditions	
	Temperature Humidity	10 °C to 35 °C 10 % to 80 % non-Condensing
	Storage Conditions	
	Temperature Humidity	-20 °C to 60 °C 5 % to 90 % non-Condensing
Stand Base	Attached (<input type="checkbox"/>), Detached (<input type="radio"/>)	
Power cord	Wall-outlet type	

NOTE

- Information in this document is subject to change without notice.

Display	TFT (Thin Film Transistor) LCD (Liquid Crystal Display) Panel, Anti-Glare coating 50.8 cm visible diagonal (20.0 inch) 0.2766 x 0.2766 mm (Pixel pitch)	
Sync Input	Horizontal Freq. Vertical Freq. Input Form	30 kHz to 83 kHz (Automatic) 56 Hz to 75 Hz (Automatic) Separate Sync. SOG (Sync On Green), Digital
Video Input	Signal Input Input Form	15 pin D-Sub Connector DVI-D Connector (Digital) RGB Analog (0.7 Vp-p/ 75 ohm), Digital
Resolution	Max Recommend	VESA 1600 x 900 @ 60 Hz VESA 1600 x 900 @ 60 Hz
Plug&Play	DDC 2B(Digital),DDC2AB(Anlaog)	
Power Consumption	On Mode Sleep Mode Off Mode	: 24 W(Typ.) ≤ 0.5 W ≤ 0.5 W
Dimensions & Weight	With Stand	Without Stand
	Width 47.58 cm (18.73 inch) Height 37.64 cm (14.81 inch) Depth 16.99 cm (6.68 inch)	Width 47.58 cm (18.73 inch) Height 30.35 cm (11.94 inch) Depth 6.08 cm (2.39 inch)
	Weight(excl. packing)	3.2 kg (7.11 lb)
Range	Tilt : -5° to 15°	
Power Input	AC 100-240 V~ 50 / 60 Hz 1.0 A	
Environment al Conditions	Operating Conditions Temperature 10 °C to 35 °C Humidity 10 % to 80 % non-Condensing Storage Conditions Temperature -20 °C to 60 °C Humidity 5 % to 90 % non-Condensing	
Stand Base	Attached (<input type="checkbox"/>), Detached (<input type="radio"/>)	
Power cord	Wall-outlet type	

NOTE

- Information in this document is subject to change without notice.

Display	TFT (Thin Film Transistor) LCD (Liquid Crystal Display) Panel, Anti-Glare coating 50.8 cm visible diagonal (20.0 inch) 0.2766 x 0.2766 mm (Pixel pitch)	
Sync Input	Horizontal Freq. Vertical Freq. Input Form	30 kHz to 83 kHz (Automatic) 56 Hz to 75 Hz (Automatic) Separate Sync. SOG (Sync On Green)
Video Input	Signal Input Input Form	15 pin D-Sub Connector RGB Analog (0.7 Vp-p/ 75 ohm)
Resolution	Max Recommend	VESA 1600 x 900 @ 60 Hz VESA 1600 x 900 @ 60 Hz
Plug&Play	DDC 2AB	
Power Consumption	On Mode Sleep Mode Off Mode	: 24 W(Typ.) ≤ 0.5 W ≤ 0.5 W
Dimensions & Weight	With Stand	Without Stand
	Width 47.58 cm (18.73 inch) Height 37.64 cm (14.81 inch) Depth 16.99 cm (6.68 inch)	Width 47.58 cm (18.73 inch) Height 30.35 cm (11.94 inch) Depth 6.08 cm (2.39 inch)
	Weight(excl. packing)	3.2 kg (7.11 lb)
Range	Tilt : -5° to 15°	
Power Input	AC 100-240 V~ 50 / 60 Hz 1.0 A	
Environmental Conditions	Operating Conditions	
	Temperature Humidity	10 °C to 35 °C 10 % to 80 % non-Condensing
	Storage Conditions	
	Temperature Humidity	-20 °C to 60 °C 5 % to 90 % non-Condensing
Stand Base	Attached (<input type="checkbox"/>), Detached (<input type="radio"/>)	
Power cord	Wall-outlet type	

NOTE

- Information in this document is subject to change without notice.

Display	TFT (Thin Film Transistor) LCD (Liquid Crystal Display) Panel, Anti-Glare coating 54.6 cm visible diagonal (21.5 inch) 0.248 x 0.248 mm (Pixel pitch)	
Sync Input	Horizontal Freq.	30 kHz to 83 kHz (Automatic)
	Vertical Freq.	56 Hz to 75 Hz (Automatic)
	Input Form	Separate Sync. SOG (Sync On Green), Digital
Video Input	Signal Input	15 pin D-Sub Connector DVI-D Connector (Digital)
	Input Form	RGB Analog (0.7 Vp-p/ 75 ohm), Digital
Resolution	Max	VESA 1920 x 1080 @60 Hz
	Recommend	VESA 1920 x 1080 @60 Hz
Plug&Play	DDC 2B(Digital),DDC2AB(Anlaog)	
Power Consumption	On Mode	: 24 W(Typ.)
	Sleep Mode	≤ 0.5 W
	Off Mode	≤ 0.5 W
Dimensions & Weight	With Stand	Without Stand
	Width 50.92 cm (20.04 inch) Height 39.69 cm (15.62 inch) Depth 21.00 cm (8.26 inch)	Width 50.92 cm (20.04 inch) Height 30.42 cm (11.97 inch) Depth 5.98 cm (2.35 inch)
	Weight(excl. packing)	3.5 kg (7.77 lb)
Range	Tilt : -5° to 15°	
Power Input	AC 100-240 V~ 50 / 60 Hz 1.0 A	
Environment al Conditions	Operating Conditions	
	Temperature	10 °C to 35 °C
	Humidity	10 % to 80 % non-Condensing
	Storage Conditions	
	Temperature	-20 °C to 60 °C
	Humidity	5 % to 90 % non-Condensing
Stand Base	Attached (<input type="checkbox"/>), Detached (<input type="radio"/>)	
Power cord	Wall-outlet type	

NOTE

- Information in this document is subject to change without notice.

Display	TFT (Thin Film Transistor) LCD (Liquid Crystal Display) Panel, Anti-Glare coating 54.6 cm visible diagonal (21.5 inch) 0.248 x 0.248 mm (Pixel pitch)	
Sync Input	Horizontal Freq. Vertical Freq. Input Form	30 kHz to 83 kHz (Automatic) 56 Hz to 75 Hz (Automatic) Separate Sync. SOG (Sync On Green)
Video Input	Signal Input Input Form	15 pin D-Sub Connector RGB Analog (0.7 Vp-p/ 75 ohm)
Resolution	Max Recommend	VESA 1920 x 1080 @60 Hz VESA 1920 x 1080 @60 Hz
Plug&Play	DDC 2AB	
Power Consumption	On Mode Sleep Mode Off Mode	: 24 W(Typ.) ≤ 0.5 W ≤ 0.5 W
Dimensions & Weight	With Stand	Without Stand
	Width 50.92 cm (20.04 inch) Height 39.69 cm (15.62 inch) Depth 21.00 cm (8.26 inch)	Width 50.92 cm (20.04 inch) Height 30.42 cm (11.97 inch) Depth 5.98 cm (2.35 inch)
	Weight(excl. packing)	3.5 kg (7.77 lb)
Range	Tilt : -5° to 15°	
Power Input	AC 100-240 V~ 50 / 60 Hz 1.0 A	
Environmental Conditions	Operating Conditions	
	Temperature Humidity	10 °C to 35 °C 10 % to 80 % non-Condensing
	Storage Conditions	
	Temperature Humidity	-20 °C to 60 °C 5 % to 90 % non-Condensing
Stand Base	Attached (<input type="checkbox"/>), Detached (<input type="radio"/>)	
Power cord	Wall-outlet type	

NOTE

- Information in this document is subject to change without notice.

Display	TFT (Thin Film Transistor) LCD (Liquid Crystal Display) Panel, Anti-Glare coating 58.4 cm visible diagonal (23 inch) 0.266 x 0.266 mm (Pixel pitch)	
Sync Input	Horizontal Freq. Vertical Freq. Input Form	30 kHz to 83 kHz (Automatic) 56 Hz to 75 Hz (Automatic) Separate Sync. SOG (Sync On Green), Digital
Video Input	Signal Input Input Form	15 pin D-Sub Connector DVI-D Connector (Digital) RGB Analog (0.7 Vp-p/ 75 ohm), Digital
Resolution	Max Recommend	VESA 1920 x 1080 @60 Hz VESA 1920 x 1080 @60 Hz
Plug&Play	DDC 2B(Digital),DDC2AB(Anlaog)	
Power Consumption	On Mode Sleep Mode Off Mode	: 27 W(Typ.) ≤ 0.5 W ≤ 0.5 W
Dimensions & Weight	With Stand	Without Stand
	Width 54.25 cm (21.35 inch) Height 41.66 cm (16.40 inch) Depth 21.00 cm (8.26 inch)	Width 54.25 cm (21.35 inch) Height 32.30 cm (12.71 inch) Depth 6.05 cm (2.38 inch)
	Weight(excl. packing)	4.2 kg (9.33 lb)
Range	Tilt : -5° to 15°	
Power Input	AC 100-240 V~ 50 / 60 Hz 1.0 A	
Environmental Conditions	Operating Conditions	
	Temperature Humidity	10 °C to 35 °C 10 % to 80 % non-Condensing
	Storage Conditions	
	Temperature Humidity	-20 °C to 60 °C 5 % to 90 % non-Condensing
Stand Base	Attached (<input type="checkbox"/>), Detached (<input type="radio"/>)	
Power cord	Wall-outlet type	

NOTE

- Information in this document is subject to change without notice.

Display	TFT (Thin Film Transistor) LCD (Liquid Crystal Display) Panel, Anti-Glare coating 58.4 cm visible diagonal (23 inch) 0.266 x 0.266 mm (Pixel pitch)	
Sync Input	Horizontal Freq. Vertical Freq. Input Form	30 kHz to 83 kHz (Automatic) 56 Hz to 75 Hz (Automatic) Separate Sync. SOG (Sync On Green)
Video Input	Signal Input Input Form	15 pin D-Sub Connector RGB Analog (0.7 Vp-p/ 75 ohm)
Resolution	Max Recommend	VESA 1920 x 1080 @60 Hz VESA 1920 x 1080 @60 Hz
Plug&Play	DDC 2AB	
Power Consumption	On Mode Sleep Mode Off Mode	: 27 W(Typ.) ≤ 0.5 W ≤ 0.5 W
Dimensions & Weight	With Stand	Without Stand
	Width 54.25 cm (21.35 inch) Height 41.66 cm (16.40 inch) Depth 21.00 cm (8.26 inch)	Width 54.25 cm (21.35 inch) Height 32.30 cm (12.71 inch) Depth 6.05 cm (2.38 inch)
	Weight(excl. packing)	4.2 kg (9.33 lb)
Range	Tilt : -5° to 15°	
Power Input	AC 100-240 V~ 50 / 60 Hz 1.0 A	
Environmental Conditions	Operating Conditions	
	Temperature Humidity	10 °C to 35 °C 10 % to 80 % non-Condensing
	Storage Conditions	
	Temperature Humidity	-20 °C to 60 °C 5 % to 90 % non-Condensing
Stand Base	Attached (<input type="checkbox"/>), Detached (<input type="radio"/>)	
Power cord	Wall-outlet type	

NOTE

- Information in this document is subject to change without notice.

Preset Modes (Resolution)

■ W1946T/W1946TN/W1946S/W1946SN

Display Modes (Resolution)		Horizontal Freq. (kHz)	Vertical Freq. (Hz)
1	720 x 400	31.468	70
2	640 x 480	31.469	60
3	640 x 480	37.500	75
4	800 x 600	37.879	60
5	800 x 600	46.875	75
6	832 x 624	49.725	75
7	1024 x 768	48.363	60
8	1024 x 768	60.123	75
*9	1360 x 768	47.712	60

*Recommend Mode

■ W2046T/W2046S

Display Modes (Resolution)		Horizontal Freq. (kHz)	Vertical Freq. (Hz)
1	720 x 400	31.468	70
2	640 x 480	31.469	60
3	640 x 480	37.500	75
4	800 x 600	37.879	60
5	800 x 600	46.875	75
6	1024 x 768	48.363	60
7	1024 x 768	60.123	75
8	1152 x 864	67.500	75
*9	1600 x 900	60.000	60

*Recommend Mode

■ W2246T/W2346T/W2246S/W2346S

Display Modes (Resolution)		Horizontal Freq. (kHz)	Vertical Freq. (Hz)
1	720 x 400	31.468	70
2	640 x 480	31.469	60
3	640 x 480	37.500	75
4	800 x 600	37.879	60
5	800 x 600	46.875	75
6	1024 x 768	48.363	60
7	1024 x 768	60.123	75
8	1152 x 864	67.500	75
9	1280 x 1024	63.981	60
10	1280 x 1024	79.976	75
11	1680 x 1050	65.290	60
*12	1920 x 1080	67.500	60

*Recommend Mode

Indicator

MODE	LED Color
On Mode	White
Sleep Mode	White Blinking
Off Mode	Off

Installing the Wall mount plate

This monitor satisfies the specifications of the Wall mount plate or the interchange device.

1. Place the monitor with its front facing downward on a soft cloth.



2. Separate the stand by pushing the PUSH button.



Good Position



Bad Position

Warning:

You can hurt your finger.

3. Install the Wall mount plate.

Wall mount plate(Separate purchase)

This is stand-type or wall mount type and is connectable with Wall mount plate. Please refer to the installation guide for more details, which is provided when Wall mount plate is purchased.

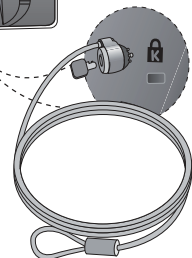
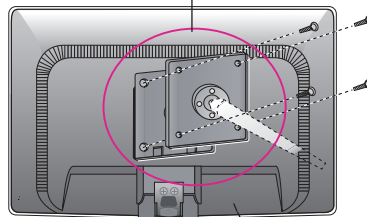
- Be sure to use screws and a wall mount that meet VESA standards.
- Using screws longer than those recommended might damage the product.
- Using screws that do not meet VESA standards might either damage the product or result in it coming away from the wall. We will not be held responsible for any damage resulting from failure to follow these instructions.

<Please use VESA standard as a recommendation.>

Mounting crew:

Interface pad thickness: 2.6mm

Screw : ϕ 4mm x pitch 0.7mm x length 10mm



Kensington Security Slot

Connected to a locking cable that can be purchased separately at most computer stores.

Digitally yours ■■■■■■■■■■



Free Manuals Download Website

<http://myh66.com>

<http://usermanuals.us>

<http://www.somanuals.com>

<http://www.4manuals.cc>

<http://www.manual-lib.com>

<http://www.404manual.com>

<http://www.luxmanual.com>

<http://aubethermostatmanual.com>

Golf course search by state

<http://golfingnear.com>

Email search by domain

<http://emailbydomain.com>

Auto manuals search

<http://auto.somanuals.com>

TV manuals search

<http://tv.somanuals.com>