



N5 Wireless Adapter

Getting Started



September 2002

Edition: September 2002

The following paragraph does not apply to any country where such provisions are inconsistent with local law: LEXMARK INTERNATIONAL, INC.,

PROVIDES THIS PUBLICATION "AS IS" WITHOUT WARRANTY OF ANY KIND, EITHER EXPRESS OR IMPLIED, INCLUDING, BUT NOT LIMITED TO, THE IMPLIED WARRANTIES OF MERCHANTABILITY OR FITNESS FOR A PARTICULAR PURPOSE. Some states do not allow disclaimer of express or implied warranties in certain transactions; therefore, this statement may not apply to you.

This publication could include technical inaccuracies or typographical errors. Changes are periodically made to the information herein; these changes will be incorporated in later editions. Improvements or changes in the products or the programs described may be made at any time.

Comments about this publication may be addressed to Lexmark International, Inc., Department F95/032-2, 740 West New Circle Road, Lexington, Kentucky 40550, U.S.A. In the United Kingdom and Eire, send to Lexmark International Ltd., Marketing and Services Department, Westhorpe House, Westhorpe Marlow Bucks SL7 3RQ. Lexmark may use or distribute any of the information you supply in any way it believes appropriate without incurring any obligation to you. You can purchase additional copies of publications related to this product by calling 1-800-553-9727. In the United Kingdom and Eire, call +44 (0) 8704 440 044. In other countries, contact your point of purchase.

References in this publication to products, programs, or services do not imply that the manufacturer intends to make these available in all countries in which it operates. Any reference to a product, program, or service is not intended to state or imply that only that product, program, or service may be used. Any functionally equivalent product, program, or service that does not infringe any existing intellectual property right may be used instead. Evaluation and verification of operation in conjunction with other products, programs, or services, except those expressly designated by the manufacturer, are the user's responsibility.

Lexmark and Lexmark with diamond design are trademarks of Lexmark International, Inc., registered in the United States and/or other countries.

Other trademarks are the property of their respective owners.

© Copyright 2002 Lexmark International, Inc. All rights reserved.

UNITED STATES GOVERNMENT RIGHTS

This software and any accompanying documentation provided under this agreement are commercial computer software and documentation developed exclusively at private expense.

Federal Communications Commission (FCC) compliance information statement

The Lexmark N5 Wireless Adapter has been tested and found to comply with the limits for a Class B digital device, pursuant to Part 15 of the FCC Rules. Operation is subject to the following two conditions: (1) this device may not cause harmful interference, and (2) this device must accept any interference received, including interference that may cause undesired operation.

The FCC Class B limits are designed to provide reasonable protection against harmful interference in a residential installation. This equipment generates, uses and can radiate radio frequency energy and, if not installed and used in accordance with the instructions, may cause harmful interference to radio communications. However, there is no guarantee that interference will not occur in a particular installation. If this equipment does cause harmful interference to radio or television reception, which can be determined by unplugging the equipment and then plugging it back in, the user is encouraged to try to correct the interference by one or more of the following measures:

- Reorient or relocate the receiving antenna.
- Increase the separation between the equipment and receiver.
- Connect the equipment into an outlet on a circuit different from that to which the receiver is connected.
- Consult your point of purchase or service representative for additional suggestions.

Exposure to Radio Frequency Radiation

The radiated output power of this device is far below the FCC radio frequency exposure limits. A minimum separation of 20 cm (8 inches) must be maintained between the antenna and any persons for this device to satisfy the RF exposure requirements of the FCC.

The manufacturer is not responsible for any radio or television interference caused by using other than recommended cables or by unauthorized changes or modifications to this equipment. Unauthorized changes or modifications could void the user's authority to operate this equipment.

Note: To assure compliance with FCC regulations for a Class B computing device, use a properly shielded and grounded cable, such as the one provided with this unit, for USB attach. Use of a substitute cable not properly shielded and grounded may result in a violation of FCC regulations.

Any questions regarding this compliance information statement should be directed to Director of Lexmark Technology and Services, Lexmark International, Inc., 740 West New Circle Road, Lexington, KY 40550, (859) 232-3000.

Industry Canada compliance statement

This Class B digital apparatus meets all requirements of the Canadian Interference-Causing Equipment Regulations.

This device complies with Industry Canada specification RSS-210. Operation is subject to the following two conditions: (1) this device may not cause interference, and (2) this device must accept any interference received, including interference that may cause undesired operation of the device.

To prevent radio interference to the licensed service, this device is intended to be operated indoors and away from windows to provide maximum shielding. Equipment (or its transmit antenna) that is installed outdoors is subject to licensing.

The installer of this radio equipment must ensure that the antenna is located or pointed such that it does not emit RF fields in excess of Health Canada limits for the general population; consult Safety Code 6, obtainable from Health Canada's Web site www.hc-sc.gc.ca/rpb.

Avis de conformité aux normes d'Industrie Canada

Cet appareil numérique de la classe B respecte toutes les exigences du Règlement sur le matériel brouilleur du Canada.

Cet appareil est conforme à la spécification RSS-210 d'Industrie Canada. Son fonctionnement est soumis aux

deux conditions suivantes: (1) cet appareil ne peut engendrer aucune interférence et (2) il doit accepter toute interférence qu'il reçoit, y compris celles qui peuvent altérer son fonctionnement.

Pour éviter toute interférence radio au service sous licence, cet appareil est conçu pour être utilisé à l'intérieur et loin des fenêtres afin de garantir une protection optimale. L'équipement (ou son antenne émettrice) est soumis à l'obtention d'une licence s'il est installé à l'extérieur.

L'installateur de cet équipement radio doit veiller à ce que l'antenne soit implantée et dirigée de manière à n'émettre aucun champ HF dépassant les limites fixées pour l'ensemble de la population par Santé Canada.

Reportez-vous au Code de sécurité 6 que vous pouvez consulter sur le site Web de Santé Canada www.hc-sc.gc.ca/rpb.

European Community (EC) directives conformity

This product is in conformity with the protection requirements of EC Council directives 89/336/EEC, 73/23/EEC, and 1999/5/EC on the approximation and harmonization of the laws of the Member States relating to electromagnetic compatibility and safety of electrical equipment designed for use within certain voltage limits and on radio equipment and telecommunications terminal equipment.

Compliance is indicated by the following CE marking:



A declaration of conformity with the requirements of the directives has been signed by the Director of Manufacturing and Technical Support, Lexmark International, S.A., Boigny, France.

This product satisfies the Class B limits of EN 55022 and safety requirements of EN 60950.

The United Kingdom Telecommunications Act 1984

This apparatus is approved under the approval number NS/G/1234/J/100003 for the indirect connections to the public telecommunications systems in the United Kingdom.

Safety information

- Use only the power supply provided with this product or the manufacturer's authorized replacement power supply.

- Connect the power cord to an electrical outlet that is near the product and easily accessible.
- Refer service or repairs, other than those described in the user documentation, to a professional service person.

CAUTION: Do not make any cabling connections (power cord, telephone, etc.) during a lightning storm.

Contents

Introduction	1
---------------------------	----------

Setup	1
--------------------	----------

Step 1: Select a location for your printer adapter	2
Step 2: Unpack your printer adapter	2
Step 3: Prepare your printer	3
Step 4: Raise the printer adapter antenna	4
Step 5: Connect your printer adapter to your printer	4
Step 6: Connect your printer adapter power supply	5
Step 7: Make sure all indicator lights are on	5
Step 8: Turn on your computer	6
Step 9: Set up your printer adapter on the network	6
Step 10: Configure your network printer	12
Inkjet printers	12
Laser printers	17

Troubleshooting	24
------------------------------	-----------

An indicator light is not on	24
The Lexmark Printer Adapter Installation Software screen does not appear	25
I cannot find the network settings of my computer's wireless adapter	25
My MAC address is not listed on the Select your N5 Wireless Adapter screen	26
My network is not listed on the Connect to the network (automatic) screen	26

I do not know the hexadecimal format of my WEP key	27
Setup was not successful (My printer was not found on the network)	27
The Lexmark printer software installation screen does not appear	28
An error message appears	28
My network printer does not appear in the list of available printers	28
There is not a Network button on the Results: No Printer Attached screen	29
There is not an Install Selected Printer button on the Network Configuration screen	29
My network printer does not print	30

How Do I...? 31

Change the computer's network settings	31
Change the printer adapter network settings	32
Print a test page	33
Uninstall the printer software	33
Uninstall the Lexmark Printer Adapter Installation Software	34
Manually configure the network printer	34
Inkjet printers	34
Laser printers	35
Select the network printer port	36
Check the printer status	37
Specify a fixed IP address	37
Reset the printer adapter	38
Contact Lexmark	38

Glossary 39

Introduction

Thank you for purchasing the Lexmark™ N5 Wireless Adapter!

The printer adapter makes it easy for you to:

- Share your printer between two or more network computers.
- Locate your printer anywhere in your home or office.

You no longer need to locate the printer next to a host computer or make sure a host computer is powered on before sending your print job from a remote location.

- Quickly transfer information.

Your new printer adapter has the capability to transfer information at up to 11Mbps.

Setup

For setup, you need:

- The Lexmark N5 Wireless Adapter
- An existing 802.11b Wireless Ethernet network
- A network-capable Lexmark printer

To find out if your printer is network-capable or for other printer-specific information, refer to the documentation that came with your printer or visit our Web site at www.lexmark.com.

- The *Lexmark Printer Adapter Installation Software CD*
- The printer software CD that came with your printer
- A computer with a CD-ROM drive

The computer must be connected to the network, have TCP/IP active and running, and have one of the following operating systems:

- Windows 98
- Windows Me
- Windows 2000
- Windows XP
- Windows NT *

* Windows NT is compatible with Lexmark *laser* printers only.

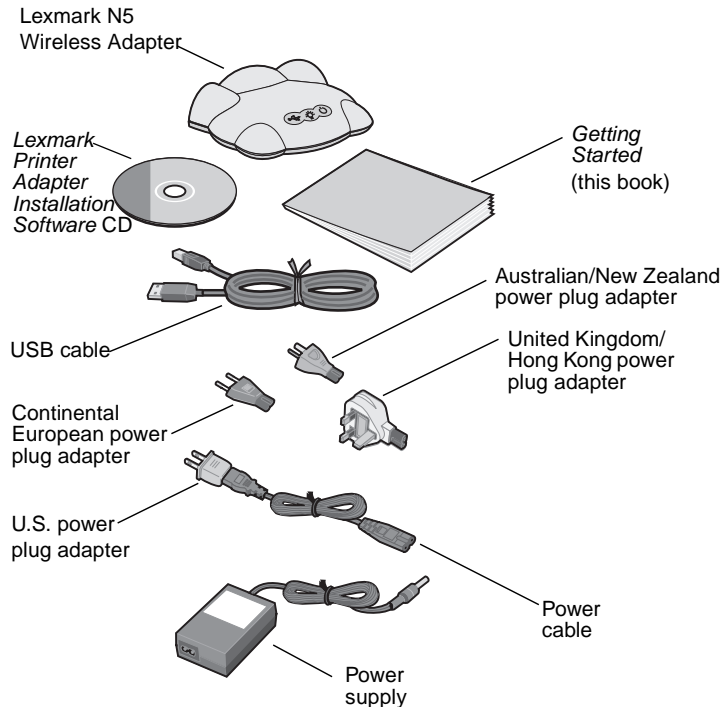
Step 1: Select a location for your printer adapter

Choosing the correct location for your new printer adapter is vital to ensuring that it provides you with the quality of service you expect.

Make sure the location is:

- Firm, level, and stable
 - Within the appropriate range for your access point if your network has an infrastructure configuration
- For more information, refer to your network documentation or contact your network administrator.
- Large enough to accommodate a printer attached to the printer adapter
 - Away from the direct airflow of air conditioners, heaters, or ventilators
 - Free of temperature or humidity extremes and fluctuations
 - Clean, dry, and free of dust
 - Away from direct sunlight

Step 2: Unpack your printer adapter



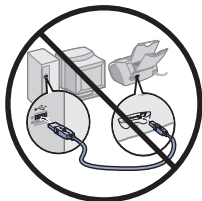
If any items are missing, contact Lexmark (page 38).

Step 3: Prepare your printer

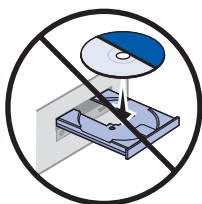
1 Unpack and set up your printer. For help, refer to the instructions that came with your printer.

2 To help configure your printer on the network:

Do *not* connect your printer to your computer; however, if you have already done so, disconnect the USB or parallel cable.



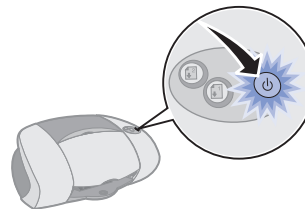
Do *not* install the printer software; however, if you have already done so, you do *not* need to uninstall it.



3 Place the printer next to your printer adapter.

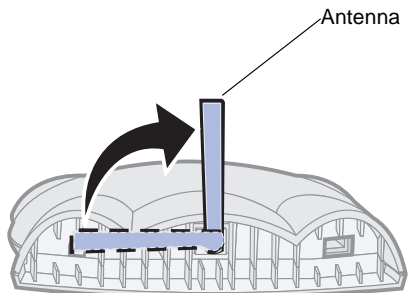
Note: If necessary, disconnect the printer power supply, and then reconnect it at its new location.

4 Make sure the printer power light is on.



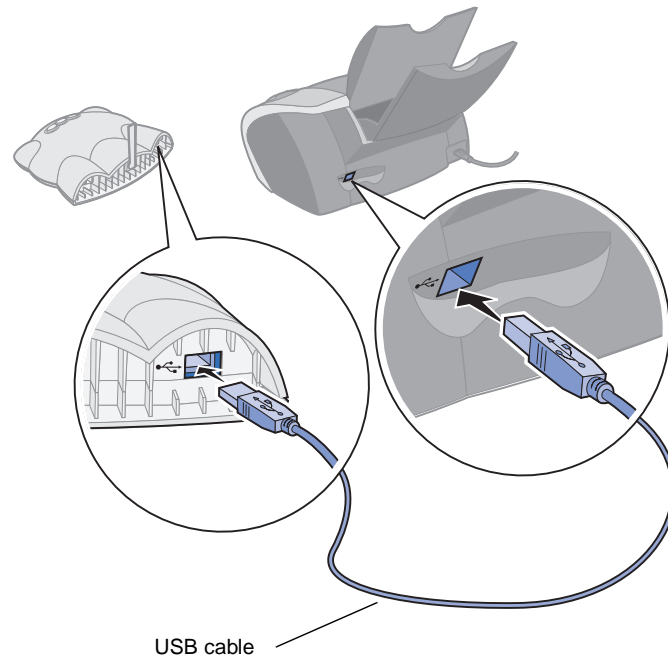
Note: Your printer may look different from the one shown.

Step 4: Raise the printer adapter antenna



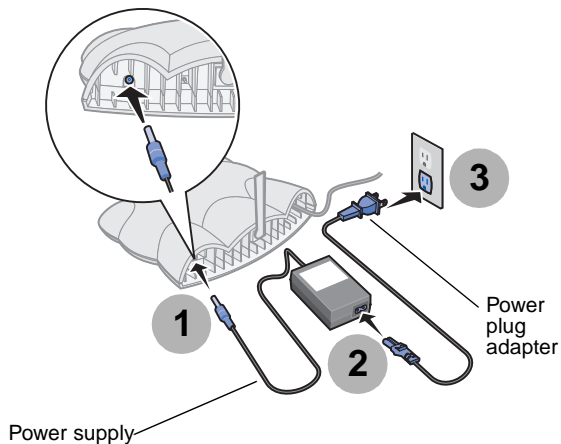
Note: Rotate the antenna clockwise from the back.

Step 5: Connect your printer adapter to your printer



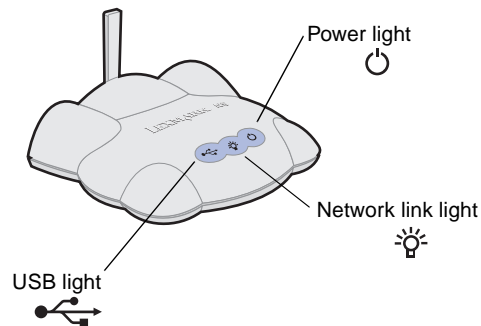
Note: Your printer may look different from the one shown.

Step 6: Connect your printer adapter power supply



If necessary, replace the power plug adapter with the correct power plug adapter for your geography.

Step 7: Make sure all indicator lights are on



If, after 30 seconds, one or more of the indicator lights are not on, see page 24.

Note: The network link light blinks to indicate network activity.

Step 8: Turn on your computer



Windows 98
Windows Me
Windows 2000
Windows XP
Windows NT*

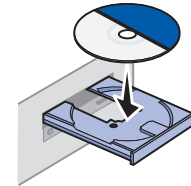
* Windows NT is compatible with Lexmark *laser* printers only.

Step 9: Set up your printer adapter on the network

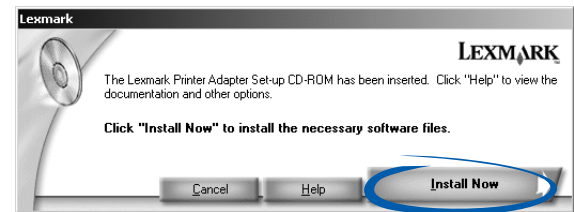
Your printer adapter must establish communication with either a remote host if your network has an ad hoc configuration or an access point if your network has an infrastructure configuration.

If you have any questions about the software screens and messages that appear during setup, see “Troubleshooting” on page 24, or click **Help** on the software screen.

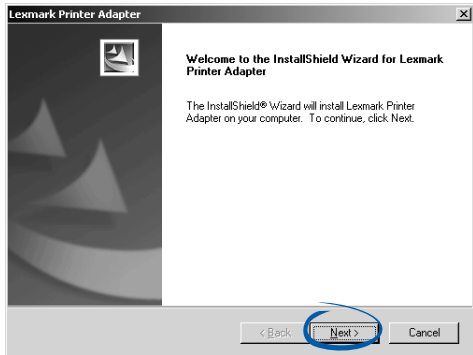
- 1 Insert the *Lexmark Printer Adapter Installation Software CD*.



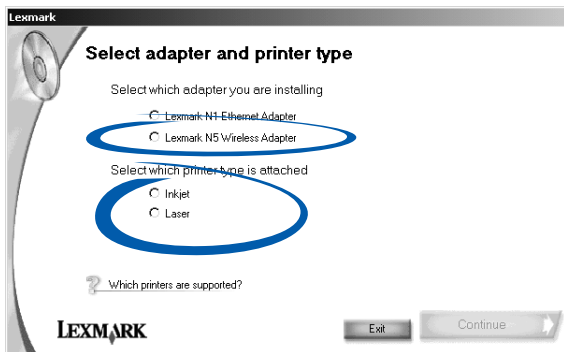
- 2 When the software installation screen appears, click **Install Now**.



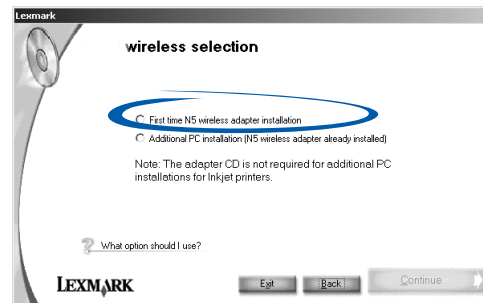
- 3 When the following screen appears, click **Next**.



- 4 Select **Lexmark N5 Wireless Adapter** and the type of printer to which you connected the printer adapter.



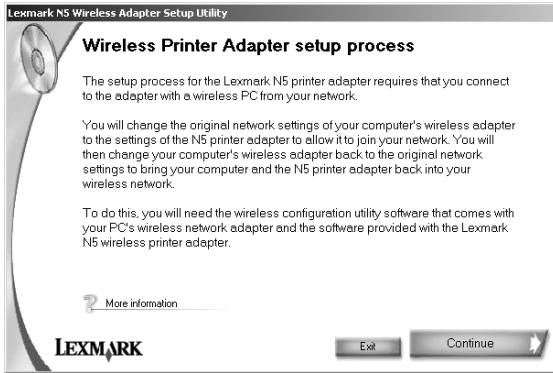
- 5 Click **Continue**.
- 6 Select **First time N5 wireless adapter installation**.



Note: Your screen may look different from the one shown.

- 7 Click **Continue**.

- 8 Read the information on the screen thoroughly. It is very important that you understand the setup process. This will help you to complete the steps in subsequent utility screens.



- 9 Click **Continue**.

- 10 Open the configuration utility for your computer's wireless adapter.

Note: Generally, an icon for the utility can be found in the system tray, selected from the Start ▶ Programs menu, or selected from the Start ▶ Settings ▶ Control Panel menu.

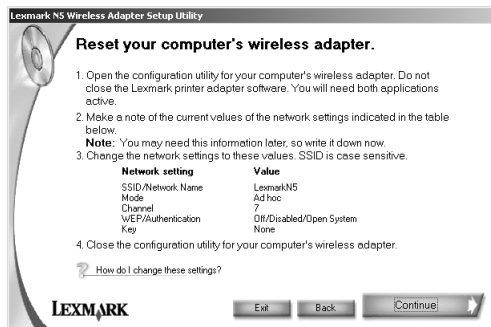
Do *not* exit the Lexmark N5 Wireless Printer Adapter Setup Utility. You need to have both utilities open at this time.

- 11 Use the space below to write down the original values of the network settings. You may need to refer to them later.

SSID/Network name _____
Mode _____
Channel _____
WEP/Authentication _____
Key _____

- 12 Change the values of your computer's wireless adapter network settings to the values shown on the screen.

Note: The SSID/Network name value is case sensitive and must be entered exactly as it appears on your screen.

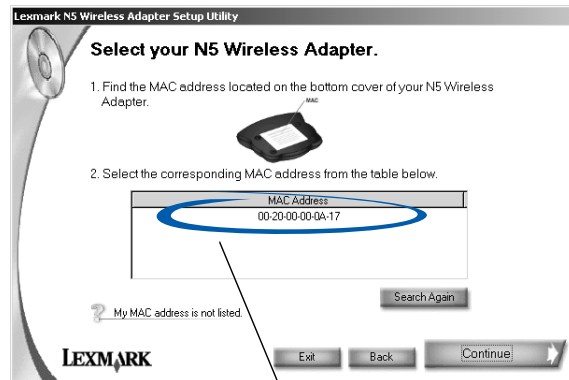


- 13 After all values have been changed, apply the changes, and then close the computer's wireless adapter configuration utility.

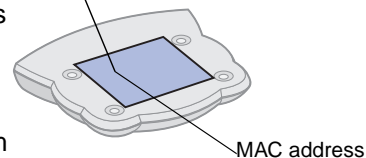
- 14 Return to the Lexmark N5 Wireless Printer Adapter Setup Utility and click **Continue**.

- 15 If there is only one printer adapter on your network, continue with step 17 on page 10.

If there are two or more printer adapters on your network, select your printer adapter from the list of available network devices.



Your printer adapter is the device whose MAC address matches the MAC address on the bottom cover of your printer adapter.

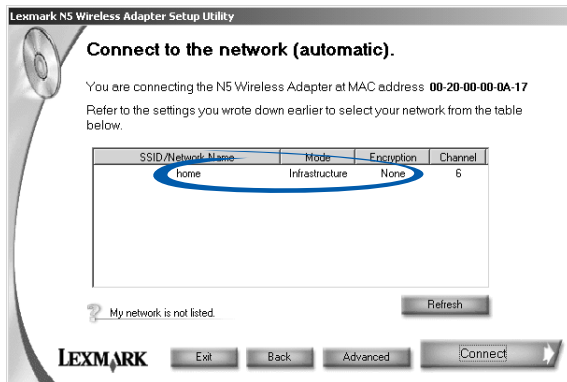


Note: If your MAC address is not listed, see "Troubleshooting" on page 24, or click **Help** on the software screen.

16 Click **Continue**.

17 Select the network to which you want to connect your printer.

Note: If the network to which you want to connect your printer is the same network to which your computer was connected, it may help you to refer to the values you wrote down in step 11 on page 8.

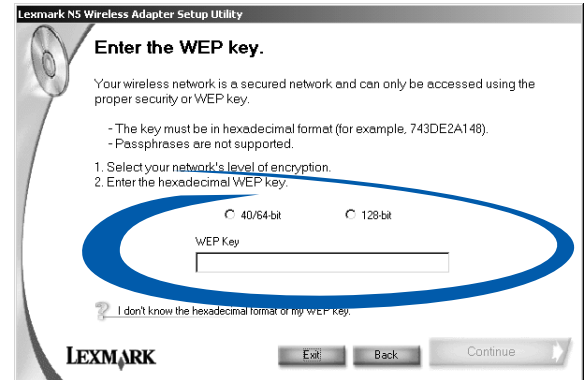


Note: If your network is not listed, click **Refresh** to update the list or **Advanced** to manually select your network settings.

18 Click **Connect**.

19 If you do not have WEP security enabled for your network, continue with step 21 on page 11.

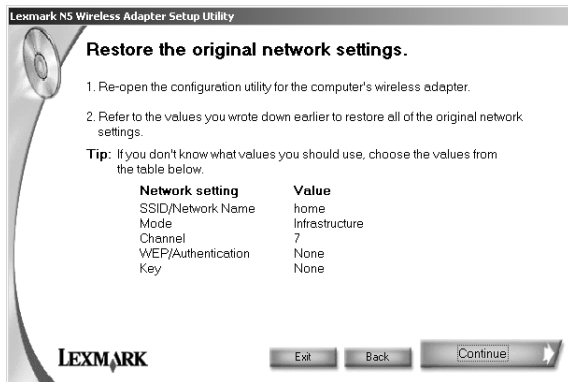
If your network is secured, select the encryption bit and enter the WEP Key on the Network Security screen.



20 Click **Continue**.

- 21 Follow the instructions on your screen to restore your computer's wireless adapter network settings to their original value.

Note: It may help you to refer to the values you wrote down in step 11 on page 8.

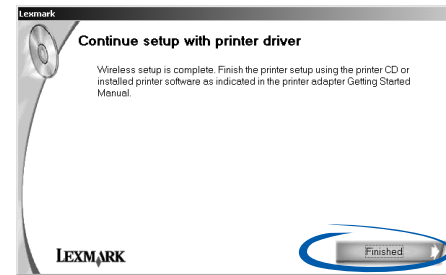


Note: Do *not* exit the Lexmark N5 Wireless Printer Adapter Setup Utility. You need to have both utilities open at this time.

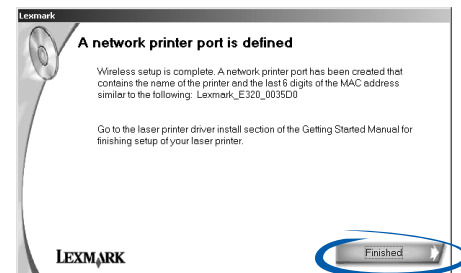
- 22 After all values have been restored, apply the changes, and then close the computer's wireless adapter configuration utility.
- 23 Return to the Lexmark N5 Wireless Printer Adapter Setup Utility and click **Continue**.

- 24 You are finished setting up your printer adapter on the network.

- If you connected your printer adapter to an inkjet printer, click **Finished**, and then continue with "Inkjet printers" on page 12.



- If you connected your printer adapter to a laser printer, a network port for your laser printer is defined. Click **Finished**, and then continue with "Laser printers" on page 17.



Step 10: Configure your network printer

Follow the instructions for your printer type.

Printer type	Page
Inkjet printers	12
Laser printers	17

Inkjet printers

Use the printer software to help configure your network inkjet printer. If you have not already installed this software, locate the CD that came with your printer now.

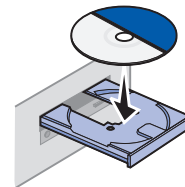
Choose a procedure from the following table to install your printer software and configure your network printer.

If you have questions about the software screens and messages that appear during installation, see “Troubleshooting” on page 24.

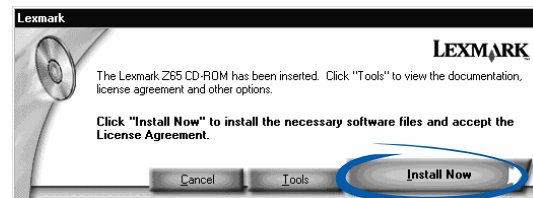
Procedure	Printer software previously installed?	Page
Inkjet 1	No	12
Inkjet 2	Yes	14

Inkjet 1 (software not previously installed)

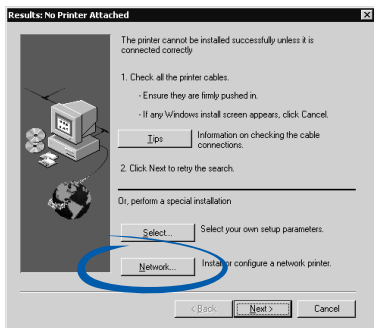
- 1 Insert the printer software CD.



- 2 When the Lexmark printer software installation screen appears, click **Install Now**.

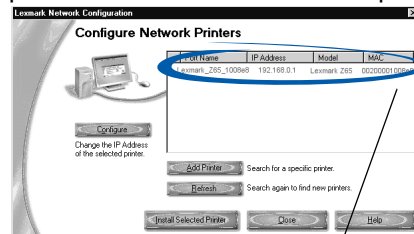


- 3 From the Results: No Printer Attached screen, click **Network**.

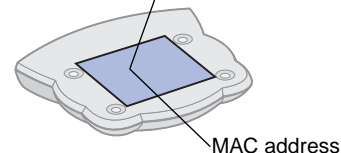


Note: If the Results: No Printer Attached screen does not appear, continue with step 6 on page 14.

- 4 From the Network Configuration screen, select your network printer from the list of available printers.



Your network printer is the one whose MAC address matches the MAC address on the bottom cover of your printer adapter.



Note: If your network printer is <Unconfigured>, see "Manually configure the network printer" on page 34, and then continue with step 5.

- 5 Click **Install Selected Printer**.

- 6 Follow the instructions on your screen to complete software installation.

You are finished setting up your computer to work with your network inkjet printer; however, the printer software must be installed on *each* computer that uses the network printer.

Setting up other computers on your network

- 1 Insert the printer software CD.
- 2 When the Lexmark printer software installation screen appears, click **Install** or **Install Now**.

If the printer software was previously installed on this computer, you are prompted to update the existing driver or install another copy of the driver. Select **Install another copy of the driver** only if you plan to print to multiple printers of the same model. For example, you might have a Lexmark Z65 locally attached and another Lexmark Z65 on your network. If you choose to install another copy of the driver, make sure you change your printer selection whenever you want to print to the network printer.

- 3 Continue with step 3 on page 13.

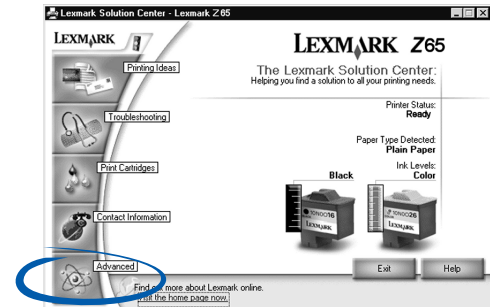
Inkjet 2 (software previously installed)

- 1 From your desktop, double-click the **Lexmark Solution Center** icon.

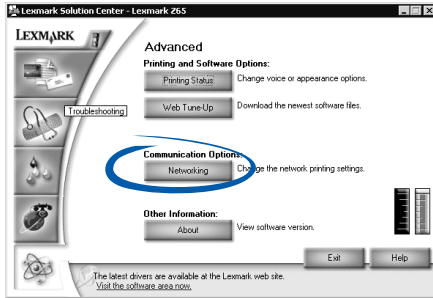


Note: If the icon is not on your desktop, click Start ▶ Programs or All Programs ▶ *the name of your Lexmark printer* ▶ Lexmark Solution Center.

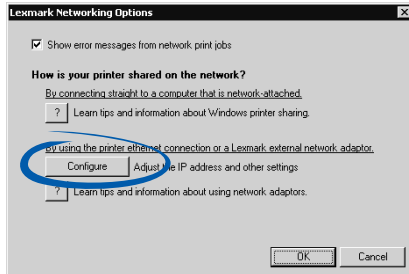
- 2 From the Lexmark Solution Center screen, click the Advanced tab.



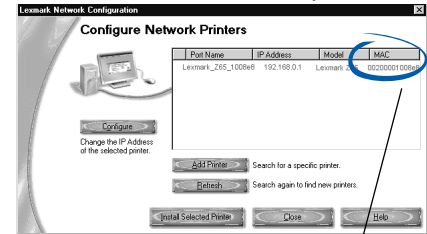
- 3 From the Advanced window, click **Networking**.



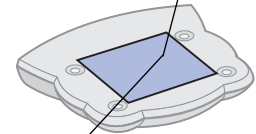
- 4 From the Networking Options screen, click **Configure**.



- 5 On the Network Configuration screen, find your network printer in the list of available printers.

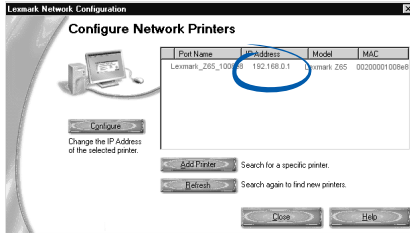


Your network printer is the one whose MAC address matches the MAC address on the bottom cover of your printer adapter.



MAC address

- 6 Verify that an IP address is listed for your network printer.



Note: If there is not an IP address listed or your network printer is <Unconfigured>, see “Manually configure the network printer” on page 34, and then continue with step **7**.

- 7 Click **Close**.
- 8 From the Networking Options screen, click **Cancel**.
- 9 Exit the Lexmark Solution Center.

- 10 Select the network printer port.

Windows 98/Me/2000

- a From the Start menu, click Settings ▶ Printers.
- b Right-click the icon for your network printer.
- c Make sure Set as Default is selected and Use Printer Offline is *not* selected, and then click Properties.
- d Click the Details or Ports tab.
- e From the Print to the following port: menu, select the printer port that consists of the printer name followed by the last six characters of the printer adapter MAC address (for example, Lexmark_Z65_1008e8).
- f Click **OK**.

Windows XP

- a From the Start menu, click Control Panel ▶ Printers and Other Hardware ▶ Printers and Faxes.
- b Click the Ports tab.
- c From the list of ports, select the one that consists of the printer name followed by the last six characters of the printer adapter MAC address (for example, Lexmark_Z65_1008e8).
- d Click **Apply**.
- e Click **OK**.

You are finished setting up your computer to work with your network inkjet printer; however, the printer software must be installed on *each* computer that uses the network printer.

Setting up other computers on your network

- 1 Insert the printer software CD.
- 2 When the Lexmark printer software installation screen appears, click **Install** or **Install Now**.

If the printer software was previously installed on this computer, you are prompted to update the existing driver or install another copy of the driver. Select **Install another copy of the driver** only if you plan to print to multiple printers of the same model. For example, you might have a Lexmark Z65 locally attached and another Lexmark Z65 on your network. If you choose to install another copy of the driver, make sure you change your printer selection whenever you want to print to the network printer.

- 3 Continue with step **3** on page 13.

Laser printers

Use the printer software to help configure your network laser printer. If you have not already installed this software, locate the CD that came with your printer now.

Choose a procedure from the following table to install your printer software and configure your network printer.

Procedure	Printer software previously installed?	Page
Laser 1	No	18
Laser 2	Yes	20

Laser 1 (software not previously installed)

Follow the instructions for your operating system.

Windows 98/Me, Windows NT 4.0, Windows 2000, and Windows XP

- 1 Launch the drivers CD that shipped with your printer.
- 2 Click **Printer Software**.
- 3 Click the CD icon to install the version of software on this CD (Quickest Installation Method).
- 4 Click **Agree** on the License Agreement.
- 5 Select **Local Printer Install**, and then click **Next**.
- 6 Select your network printer from the list, and then select the printer port that consists of the printer name followed by the last six characters of the printer adapter MAC address (for example, Lexmark_E320_0035D0) from the pull-down menu.

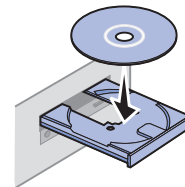
Note: If there is not a printer port that corresponds to the printer adapter MAC address, see “Manually configure the network printer” on page 34.

- 7 Click **Finish**.
- 8 When installation completes, click **OK**.
- 9 Restart the computer.

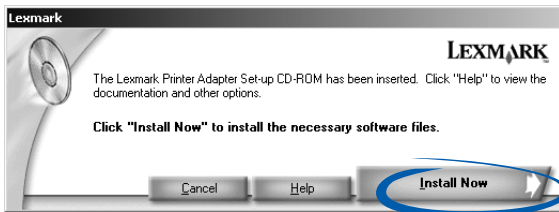
You are finished setting up your computer to work with your network laser printer; however, the printer port must be defined and the printer software must be installed on *each* computer that uses the network printer.

Setting up other computers on your network

- 1 Insert the *Lexmark Printer Adapter Installation Software* CD.

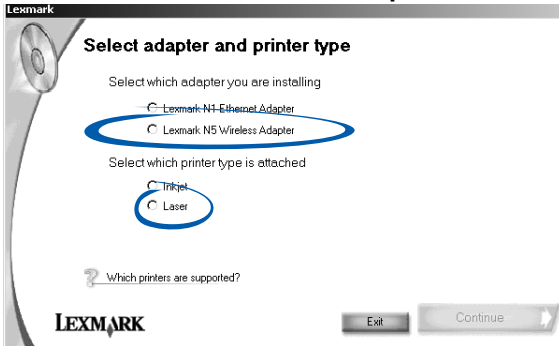


- 2 When the software installation screen appears, click **Install Now**.



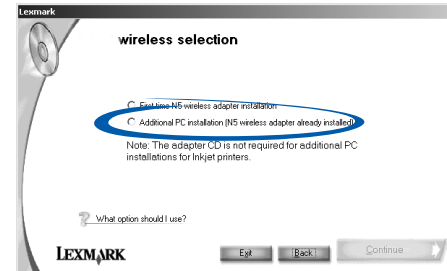
- 3 Click **Next** on the InstallShield Wizard screen.

- 4 Select **Lexmark N5 Wireless Adapter and Laser**.



- 5 Click **Continue**.

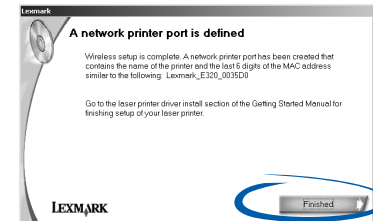
- 6 Select **Additional PC installation**.



Note: Your screen may look different from the one shown.

- 7 Verify that your computer's wireless adapter is on the same network as your printer adapter, and then click **Continue**.

- 8 A network port for your laser printer is defined. Click **Finished**, and then follow the steps under "Windows 98/Me, Windows NT 4.0, Windows 2000, and Windows XP" on page 18 to install the printer software.



Laser 2 (software previously installed)

Follow the instructions for your operating system.

Windows 98/Me, Windows NT 4.0, and Windows 2000

- 1 From the Start menu, click Settings ▶ Printers.
- 2 Right-click the icon for your network printer.
- 3 Make sure Set as Default is selected and Use Printer Offline is *not* selected, and then click Properties.
- 4 Click the Details or Port tab.
- 5 From the Print to the following port: menu, select the printer port that consists of the printer name followed by the last six characters of the printer adapter MAC address (for example, Lexmark_E320_0035D0).

Note: If there is not a printer port that corresponds to the printer adapter MAC address, see “Manually configure the network printer” on page 34.

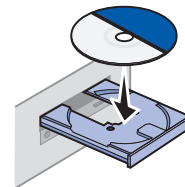
- 6 Click **OK**.

You are finished setting up your computer to work with your network laser printer; however, the printer port must be defined and the printer software must be installed on *each* computer that uses the network printer.

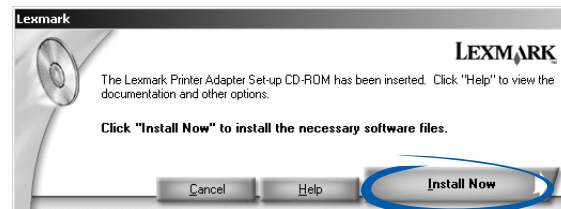
Setup

Setting up other computers on your network

- 1 Insert the *Lexmark Printer Adapter Installation Software* CD.

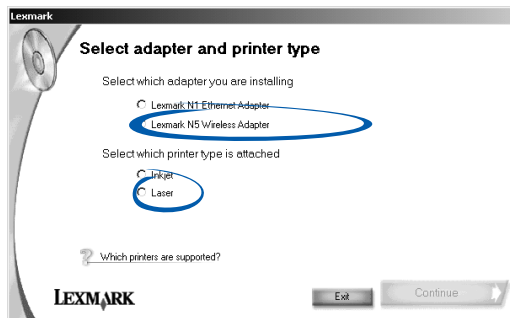


- 2 When the software installation screen appears, click **Install Now**.



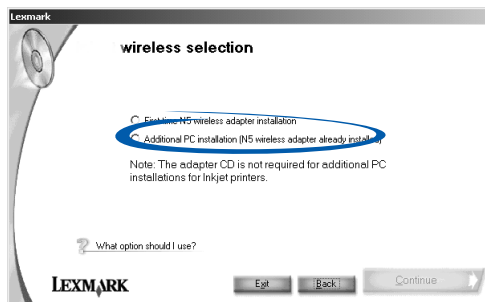
- 3 Click **Next** on the InstallShield Wizard screen.

- 4 Select **Lexmark N5 Wireless Adapter and Laser.**



- 5 Click **Continue.**

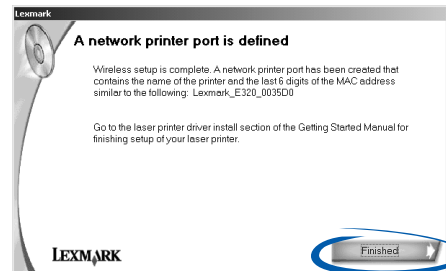
- 6 Select **Additional PC installation.**



Note: Your screen may look different from the one shown.

- 7 Verify that your computer's wireless adapter is on the same network as your printer adapter, and then click **Continue.**

- 8 A network port for your laser printer is defined. Click **Finished**, and then follow the steps under "Windows 98/Me, Windows NT 4.0, Windows 2000, and Windows XP" on page 18 to install the printer software.



Windows XP

- 1 From the Start menu, click Control Panel ▶ Printers and Other Hardware ▶ View installed printers or fax printers.
- 2 Right-click the icon for your network printer.
- 3 Make sure Use Printer Offline is *not* selected, and then click **Properties**.
- 4 From the Ports tab, select the printer port that consists of the printer name followed by the last six characters of the printer adapter MAC address (for example, Lexmark_E320_0035D0).

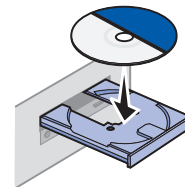
Note: If there is not a printer port that corresponds to the printer adapter MAC address, see “Manually configure the network printer” on page 34.

- 5 Click **OK**.

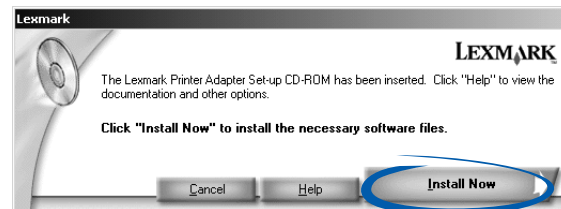
You are finished setting up your computer to work with your network laser printer; however, the printer port must be defined and the printer software must be installed on *each* computer that uses the network printer.

Setting up other computers on your network

- 1 Insert the *Lexmark Printer Adapter Installation Software* CD.

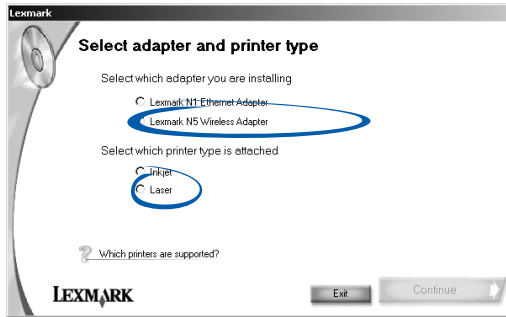


- 2 When the software installation screen appears, click **Install Now**.



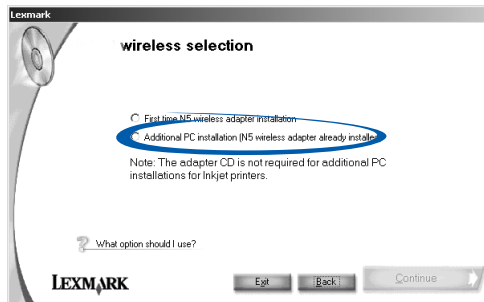
- 3 Click **Next** on the InstallShield Wizard screen.

- 4 Select **Lexmark N5 Wireless Adapter and Laser.**



- 5 Click **Continue.**

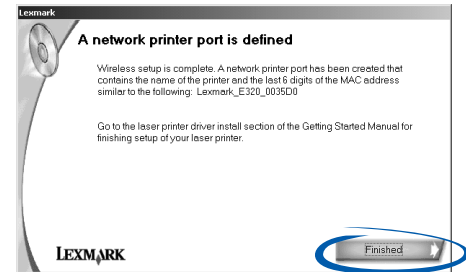
- 6 Select **Additional PC installation.**



Note: Your screen may look different from the one shown.

- 7 Verify that your computer's wireless adapter is on the same network as your printer adapter, and then click **Continue.**

- 8 A network port for your laser printer is defined. Click **Finished**, and then follow the steps under "Windows 98/Me, Windows NT 4.0, Windows 2000, and Windows XP" on page 18 to install the printer software.



Troubleshooting

For this problem:	See page:
An indicator light is not on	24
The Lexmark Printer Adapter Installation Software screen does not appear	25
I cannot find the network settings of my computer's wireless adapter	25
My MAC address is not listed on the Select your N5 Wireless Adapter screen	26
My network is not listed on the Connect to the network (automatic) screen	26
I do not know the hexadecimal format of my WEP key	27
Setup was not successful (My printer was not found on the network)	27
The Lexmark printer software installation screen does not appear	28
An error message appears	28
My network printer does not appear in the list of available printers	28
There is not a Network button on the Results: No Printer Attached screen	29
There is not an Install Selected Printer button on the Network Configuration screen	29
My network printer does not print	30

An indicator light is not on

If this indicator light is not on:	Make sure the:
Power	Printer adapter power supply is connected properly.
USB	USB cable connecting the printer adapter to the printer is secure, and the printer is on. Note: This light blinks to indicate that an IP address is being assigned by way of DHCP or that a print job is processing.
Network link	<ul style="list-style-type: none">• Access point is powered on.• Access point is configured for your printer adapter.• Printer adapter is within the appropriate range for your access point.• Network is operating properly. For additional help, refer to your network documentation or contact your network administrator. Note: This light blinks to indicate any wireless network activity detected by the printer adapter.

Note: See page 5 to locate the indicator lights.

The Lexmark Printer Adapter Installation Software screen does not appear

- 1 Close all open software applications.
- 2 Restart your computer.
- 3 Reinsert the *Lexmark Printer Adapter Installation Software* CD.

If the software installation screen appears, continue with step 2 on page 6.

If not, continue with the following steps:

- a From your desktop, double-click **My Computer**.
- b Double-click the CD-ROM drive icon.
- c If necessary, double-click **setup.exe**.
- d Continue with step 2 on page 6.

I cannot find the network settings of my computer's wireless adapter

A wireless adapter configuration utility is provided with your computer's wireless adapter hardware. You can use this utility to select the wireless communication data for your network.

Generally, an icon for the utility is in the system tray, selected from the Start ▶ Programs menu, or selected from the Start ▶ Settings ▶ Control Panel menu.

Once the utility is launched, click the appropriate tab to view or change the wireless communication settings.

Note: Many wireless adapter configuration utilities have a search feature to simplify network selection.

My MAC address is not listed on the Select your N5 Wireless Adapter screen

- Click **Search Again**.
- Verify that all three printer adapter lights are on.
- If you manually entered the SSID, verify the value **LexmarkN5** was entered correctly. The SSID is case-sensitive, and there should be no extraneous spaces.
- Click **Back** to return to the previous screen, and then re-enter the data.
- Reset the printer adapter. For help, see page 38.

My network is not listed on the Connect to the network (automatic) screen

- Click **Refresh**.
- Verify that all three lights on the printer adapter are on.
- If you manually entered the SSID, verify the value **LexmarkN5** was entered correctly. The SSID is case-sensitive, and there should be no extraneous spaces.
- Click **Advanced** to manually select the network settings. (Some ad hoc or closed system wireless networks may not automatically display the network settings.)
- Make sure the network is operating properly. For help, refer to your network documentation or contact your network administrator.

I do not know the hexadecimal format of my WEP key

- Go to another device on your network and note the selections for key and number of bits.
- 40/64 bit keys contain five alphanumeric characters (0 through 9, A through F) and 128 bit keys contain ten.
- If your network uses a passphrase, refer to the documentation that came with your access point.

Setup was not successful (My printer was not found on the network)

- Verify the network status of your computer's wireless adapter. If the network is not active, you did not reconnect to the network. Click **Back** to return to the previous screen.
- Verify the IP address of the computer is valid. If the IP address was reset to 0.0.0.0 when the computer was switched from an infrastructure network with DHCP to an Ad hoc network, you may need to reconfigure your computer's wireless adapter. For help, refer to the documentation that came with your computer's wireless adapter.
- If the computer appears on the network, but the printer does not, go to Step 9: "Set up your printer adapter on the network" on page 6, and repeat the install process.
- If you can see the LexmarkN5 network using the wireless search feature, it is likely the printer adapter never connected with your network. Go to Step 9: "Set up your printer adapter on the network" on page 6, and repeat the install process.

The Lexmark printer software installation screen does not appear

- 1 Close all open software applications.
- 2 Restart your computer.
- 3 Reinsert the printer software CD.

If the software installation screen appears, continue with step 3 on page 13.

If not, continue with the following steps:

- a From your desktop, double-click **My Computer**.
- b Double-click the CD-ROM drive icon.
- c If necessary, double-click **setup.exe**.
- d Continue with step 3 on page 13.

An error message appears

Follow the instructions on any error message that appears on your computer screen. Click the ? or **Help** button for additional information.

My network printer does not appear in the list of available printers

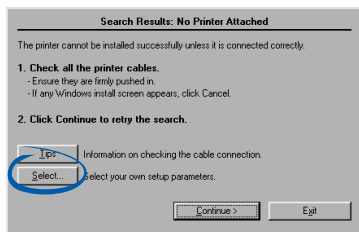
- Make sure the computer's wireless adapter network settings have been restored to their original values.

Note: Refer to the values you wrote down in step 11 on page 8.

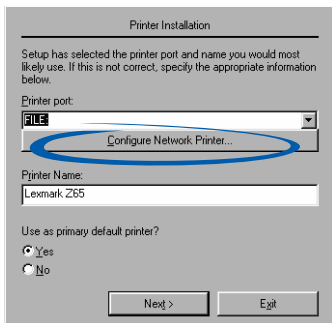
- Unplug the printer adapter power supply, and then plug it in again.
- Make sure all cables to the printer, printer adapter, electrical outlet, and network connection are secure (pages 4 through 5).
- Click **Refresh**.
- If your printer adapter is connected to a laser printer, run the Network Configuration Utility. For help, see "Laser printers" on page 35.
- If your network printer is on a remote subnet, click **Add Printer**, and then follow the instructions on your screen.
- Restart the computer.

There is not a Network button on the Results: No Printer Attached screen

- 1 From the Search Results: No Printer Attached screen, click **Select**.



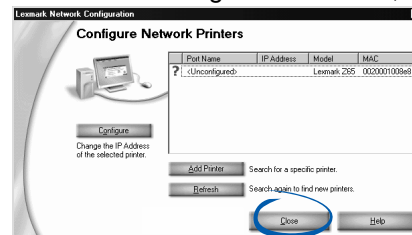
- 2 From the Printer Installation screen, click **Configure Network Printer**.



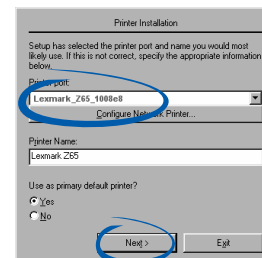
- 3 Continue with step **4** on page 13.

There is not an Install Selected Printer button on the Network Configuration screen

- 1 From the Network Configuration screen, click **Close**.



- 2 From the Printer Installation screen, select your printer port from the pull-down menu, and then click **Next**.



- 3 Follow the instructions on your screen to complete software installation.

My network printer does not print

- Make sure all cables to the printer, printer adapter, electrical outlet and network connection are secure (pages 4 through 5).
- Make sure all indicator lights are on (page 5).
- Check the printer status (page 37).
- Make sure the printer software is installed on the computer you are sending the print job from [page 12 (inkjet) or page 17 (laser)].

Note: You must install the printer software on each computer that uses the network printer.

- Make sure your network printer has been assigned a unique IP address.
 - If your printer adapter is connected to an inkjet printer, check the Network Configuration screen to verify a unique IP address is listed. For help accessing the Network Configuration screen, follow steps **1** through **3** on page 14.

If there is not an IP address listed for your network printer or the address is the same as another device on your network, see “Manually configure the network printer” on page 34.
 - If your printer adapter is connected to a laser printer, run the Network Configuration Utility. For help, see “Laser printers” on page 35.

If there is not an IP address listed for your network printer or the address is the same as another device on your network, see “Manually configure the network printer” on page 34.

- Make sure you have selected the correct printer port for the network printer. For help selecting the network printer port, see page 36.
- Make sure the network is operating properly.

Refer to your network documentation or contact your network administrator.

- Restart the computer.
- Make sure there is not a problem with the printer itself.

a Disconnect the printer from the printer adapter.

b Attach the printer directly to your computer with a USB or parallel cable.

If you are able to print when the printer is directly attached, there may be a problem with your network. Refer to your network documentation or contact your network administrator.

- Uninstall and then reinstall the printer software. (page 33)

If the printer still does not print, refer to your printer documentation for help.

How Do I...?

Use this chapter to find out how to perform common tasks related to your printer adapter and network printer.

To find out how to:	See page:
Change the computer's network settings	31
Change the printer adapter network settings	32
Print a test page	33
Uninstall the printer software	33
Uninstall the Lexmark Printer Adapter Installation Software	34
Manually configure the network printer	34
Select the network printer port	36
Check the printer status	37
Specify a fixed IP address	37
Reset the printer adapter	38
Contact Lexmark	38

Change the computer's network settings

A wireless adapter configuration utility is provided with your computer's wireless adapter hardware. You can use this utility to select the wireless communication data for your network.

Generally, an icon for the utility is in the system tray, selected from the Start ▶ Programs menu, or selected from the Start ▶ Settings ▶ Control Panel menu.

Once the utility is launched, click the appropriate tab to view or change the wireless communication settings.

Note: Many wireless adapter configuration utilities have a search feature to simplify network selection.

Change the printer adapter network settings

The printer adapter network settings include the following:

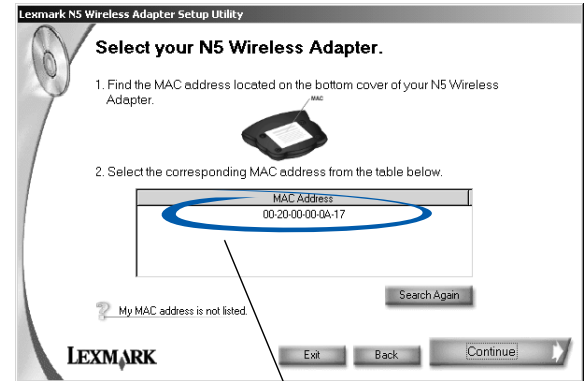
- SSID/Network name
- Network Mode
- Channel
- Authentication Type

To change these settings and the selection to activate DHCP using the Wireless Setup Utility, follow these steps:

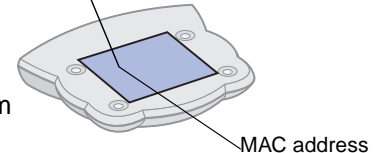
- 1 From the Start menu, click Programs ► Lexmark Printer Adapter ► Wireless Setup Utility.
- 2 If your adapter is already connected to your network, skip the Reset your wireless adapter screen and the Reset your computer's wireless adapter screen.

3

Select the printer adapter for which you want to change the settings.

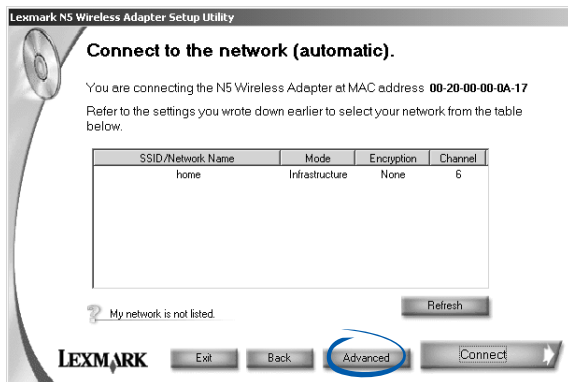


Make sure the MAC address you select matches the MAC address on the bottom cover of your printer adapter.

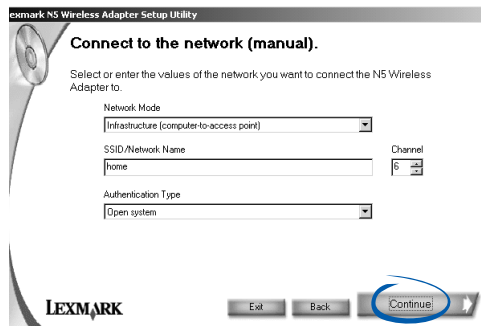


Note: If your MAC address is not listed, see “Troubleshooting” on page 24, or click **Help** on the software screen.

- 4 Click **Advanced**.



- 5 Change the appropriate network settings, and then click **Continue**.



- 6 If you are already in your network, skip the Reset your computer's wireless adapter screen.

Print a test page

- 1 From the Start menu, click Settings ▶ Printers.
- 2 From the **Printers** folder, right-click the icon for your network printer.
- 3 Select Properties from the sidebar menu.
- 4 From the General tab, click **Print Test Page**.

Uninstall the printer software

Inkjet printers

- 1 From the Start menu, click Programs or All Programs ▶ *the name of your Lexmark printer* ▶ Lexmark Uninstall.
- 2 Follow the instructions on your screen. To reinstall the printer software, restart your computer, and then follow the instructions on page 12.

Laser printers

Refer to the instructions that came with your printer.

To reinstall the printer software, restart your computer, and then follow the instructions on page 17.

Uninstall the Lexmark Printer Adapter Installation Software

- 1 From the Start menu, click Programs or All Programs ▶ Lexmark Printer Adapter ▶ Uninstall Lexmark Printer Adapter.
- 2 Follow the instructions on your screen.

Manually configure the network printer

Your printer software automatically configures your network printer. However, following are some instances when you may need to configure it manually.

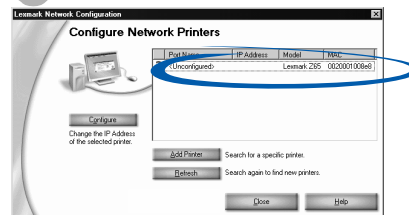
- Your network printer is <Unconfigured>.
- There is not an IP address listed for your network printer on the screen that lists the available printers.
- You manually assigned IP addresses for other network devices.
- You want to assign a specific IP address.
- You want to use your network printer on a remote subnet.

Follow the instructions for your printer type.

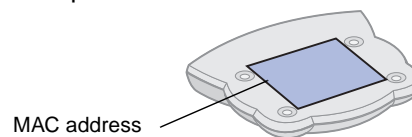
How Do I...?

Inkjet printers

- 1 From the Network Configuration screen, select your <Unconfigured> network printer. For help accessing the Network Configuration screen, follow steps 1 through 3 on page 14.



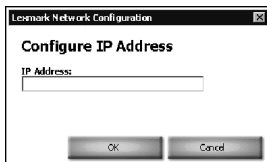
Your network printer is the one whose MAC address matches the MAC address on the bottom cover of your printer adapter.



Note: If you want to print to a network printer on a remote subnet, click **Add Printer** and follow the instructions on your screen.

- 2 Click **Refresh**.
- 3 Click **Configure**.

- 4 Enter an IP address that is valid for your network.

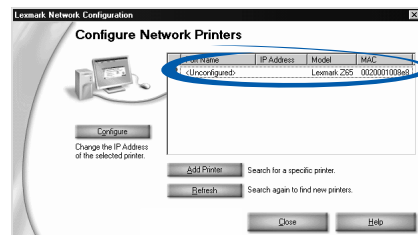


For help, refer to your network documentation or contact your network administrator.

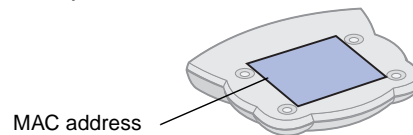
- 5 Click **OK**.
- 6 Continue with page 12 (*software not previously installed*) or page 14 (*software previously installed*).

Laser printers

- 1 From the Start menu, click Programs ► Lexmark Printer Adapter ► Network Configuration Utility.
- 2 From the Network Configuration screen, select your <Unconfigured> network printer.



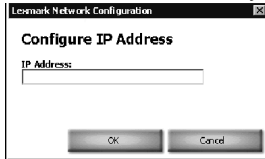
Your network printer is the one whose MAC address matches the MAC address on the bottom cover of your printer adapter.



Note: If you want to print to a network printer on a remote subnet, click **Add Printer** and follow the instructions on your screen.

- 3 Click **Refresh**.

- 4 Click **Configure**.
- 5 Enter an IP address that is valid for your network.



For help, refer to your network documentation or contact your network administrator.

- 6 Click **OK**.
- 7 Click **Close**.
- 8 Select the network printer port. For help, see page 36.

Select the network printer port

Follow the instructions for your operating system.

Windows 98/Me, Windows NT 4.0, and Windows 2000

- 1 From the Start menu, click Settings ► Printers.
- 2 From the **Printers** folder, right-click the icon for your network printer.
- 3 Click Properties.
- 4 Click the Details or Port tab.
- 5 From the Print to the following port: menu, select the printer port that consists of the printer name followed by the last six characters of the printer adapter MAC address (for example, Lexmark_E320_0035D0).
- 6 Click **OK**.

Windows XP

- 1 From the Start menu, click Control Panel ▶ Printers and Other Hardware ▶ View installed printers or fax printers.
- 2 Right-click the icon for your network printer.
- 3 Make sure Use Printer Offline is *not* selected, and then click Properties.
- 4 From the Ports tab, select the printer port that consists of the printer name followed by the last six characters of the printer adapter MAC address (for example, Lexmark_E320_0035D0).

Note: If there is not a printer port that corresponds to the printer adapter MAC address, see “Manually configure the network printer” on page 34.
- 5 Click **OK**.

Check the printer status

- 1 From the Start menu, click Settings ▶ Printers.
- 2 From the **Printers** folder, right-click the icon for your network printer.
- 3 Make sure Set as Default is selected and Use Printer Offline is *not* selected.

Specify a fixed IP address

Your printer adapter supports Dynamic Host Configuration Protocol (DHCP). When DHCP is active, an IP address is automatically assigned each time the printer adapter is connected to the network.

If you prefer to specify a fixed IP address rather than use DHCP or other automatic IP addressing supported by your printer adapter, turn off DHCP on the Connect to the Network (Manual) screen.

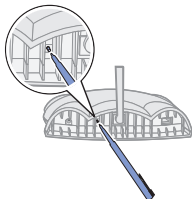
For help accessing the Connect to the Network (Manual) screen, follow steps **1** through **4** on pages 32 through 33.

Reset the printer adapter

If you encounter problems during setup or later decide to move your printer adapter to a different network, you may need to reset the printer adapter.

To reset the printer adapter:

- 1 Verify all indicator lights are on (page 5).
- 2 Using a pen or pencil, press the **Reset** button three times within 5 seconds.



- 3 Verify the USB light goes out momentarily, blinks, and then remains lit.

Contact Lexmark

Visit our Web site at www.lexmark.com to:

- Receive customer support.
- Register your printer adapter.

Other ways to contact our Customer Support Center:

- If you have an inkjet printer, from the Lexmark Solution Center, click Contact Information ▶ Customer Support.
- If you have an inkjet printer, insert the printer software CD that came with your printer, and then click Contact Lexmark ▶ Customer Support.
- Insert the *Lexmark Printer Adapter Installation Software* CD, and then click Help ▶ Contact Lexmark ▶ Customer Support.

Glossary

Access point. A hardware device or a computer's software that acts as a communication hub for users of a wireless device to connect to a wired LAN.

Ad hoc. An 802.11b networking framework in which devices or stations communicate directly with each other, without the use of an access point. Ad hoc mode is also referred to as peer-to-peer mode or an Independent Basic Service Set (IBSS).

Authentication. The process of identifying an individual, usually based on a username and password. Also, one of your computer's wireless adapter network settings.

Channel. A communications path between two computers or devices. Also, one of your computer's wireless adapter network settings.

DHCP. Dynamic Host Configuration Protocol, a protocol for assigning dynamic IP addresses to devices on a network. With dynamic addressing, a device can have a different IP address every time it connects to the network. This means that a new device can be added to a network without the hassle of manually assigning it a unique IP address.

Infrastructure. An 802.11b networking framework in which devices communicate with each other by first going through an

access point. In infrastructure mode, wireless devices can communicate with each other or can communicate with a wired network.

IP address. A number that identifies each device connected to the network. For example, 157.184.0.1.

Key. A password needed to decipher encoded data. Also, one of your computer's wireless adapter network settings.

MAC address. A 12-character identifier that is unique for each network hardware device. For example, 00.02.00.10.08.e8.

Mode. The particular networking framework (Ad hoc or Infrastructure) that your network devices are operating in. Also, one of your computer's wireless adapter network settings.

network-capable printer. A Lexmark printing device that does not need to be locally attached to a computer. When connected to a network it can be accessed by any computer on the same network.

Network name. See SSID.

printer port. Windows terminology for a physical or logical connection to a printer. For example:

- LPT1 indicates the printer is attached to a physical parallel port with a parallel cable.
- USB001 indicates the printer is attached to a physical USB port with a USB cable.
- Lexmark_Z65_1008e8 indicates a logical connection to the printer across your network.

SSID. Service Set Identifier (SSID), one of your computer's wireless adapter network settings, is also referred to as a Network Name because essentially, it is a name that identifies a wireless network.

The SSID is a 32-character unique identifier that acts as a password when a mobile device tries to connect to the BSS (Basic Service Set). The SSID differentiates one WLAN from another, so all access points and all devices attempting to connect to a specific WLAN must use the same SSID. A device will not be permitted to join the BSS unless it can provide the unique SSID. Because an SSID can be sniffed in plain text from a packet it does not supply any security to the network.

subnet. A portion of a network that shares a common address component. On TCP/IP networks, subnets are defined as all devices whose IP addresses have the same prefix. For example, all devices with IP addresses that start with 192.168.0 would typically be part of the same subnet.

System tray. A collection of miniature icons that allow easy access to system functions such as your computer's network configuration utility. The system tray (also referred to as systray) is located in the Windows taskbar (generally in the bottom right corner, next to the clock). Double-click or right-click on an icon to view and access the details and controls.

TCP/IP. The Transmission Control Protocol (TCP) and the Internet Protocol (IP) are protocols that let different types of computers communicate with each other. The internet is based on this suite of protocols.

WEP. Wired Equivalent Privacy (WEP), one of your computer's wireless adapter network settings, is a security protocol for wireless local area networks (WLANs) defined in the 802.11b standard.

WEP provides security by encrypting data over radio waves so that it is protected as it is transmitted from one end point to another.

Statement of Limited Warranty

Lexmark International, Inc. Lexington, KY

This limited warranty applies to the United States. For customers outside the U.S., refer to the country-specific warranty information that came with your product.

This limited warranty applies to this product only if it was originally purchased for your use, and not for resale, from Lexmark or a Lexmark remarketer, referred to in this statement as "Remarketer."

Limited warranty

Lexmark warrants that this product:

- Is manufactured from new parts, or new and serviceable used parts, which perform like new parts
- Is, during normal use, free from defects in material and workmanship

If this product does not function as warranted during the warranty period, contact a Remarketer or Lexmark for repair or replacement (at Lexmark's option).

If this product is a feature or option, this statement applies only when that feature or option is used with the product for which it was designed. To obtain warranty service, you may be required to present the feature or option with the product.

If you transfer this product to another user, warranty service under the terms of this statement is available to that user for the remainder of the warranty period. You should transfer proof of original purchase and this statement to that user.

Limited warranty service

The warranty period starts on the date of original purchase as shown on the purchase receipt. The warranty period ends 12 months later.

To obtain warranty service you may be required to present proof of original purchase. You may be required to deliver your product to the Remarketer or Lexmark, or ship it prepaid and suitably packaged to a Lexmark designated location. You are responsible for loss of, or damage to, a product in transit to the Remarketer or the designated location.

When warranty service involves the exchange of a product or part, the item replaced becomes the property of the Remarketer or Lexmark. The replacement may be a new or repaired item. The replacement item assumes the remaining warranty period of the original product.

Replacement is not available to you if the product you present for exchange is defaced, altered, in need of a repair not included in warranty service, damaged beyond repair, or if the product is not free of all legal obligations, restrictions, liens, and encumbrances.

Before you present this product for warranty service, remove all print cartridges, programs, data, and removable storage media (unless directed otherwise by Lexmark).

For further explanation of your warranty alternatives and the nearest Lexmark authorized servicer in your area, contact Lexmark at (407) 563-4600, or on the World Wide Web at www.lexmark.com.

Remote technical support is provided for this product throughout its warranty period. For products no longer covered by a Lexmark warranty, technical support may not be available or only be available for a fee.

Extent of limited warranty

We do not warrant uninterrupted or error-free operation of any product.

Warranty service does not include repair of failures caused by:

- Modification or attachments
- Accidents or misuse
- Unsuitable physical or operating environment
- Maintenance by anyone other than Lexmark or a Lexmark authorized servicer
- Operation of a product beyond the limit of its duty cycle
- Use of printing media outside of Lexmark specifications
- Supplies (such as ink) not furnished by Lexmark
- Products, components, parts, materials, software, or interfaces not furnished by Lexmark

TO THE EXTENT PERMITTED BY APPLICABLE LAW, NEITHER LEXMARK NOR ITS THIRD PARTY SUPPLIERS OR REMARKETERS MAKE ANY OTHER WARRANTY OR CONDITION OF ANY KIND, WHETHER EXPRESS OR IMPLIED, WITH RESPECT TO THIS PRODUCT, AND SPECIFICALLY DISCLAIM THE IMPLIED WARRANTIES OR CONDITIONS OF MERCHANTABILITY, FITNESS FOR A PARTICULAR PURPOSE, AND SATISFACTORY QUALITY. ANY WARRANTIES THAT MAY NOT BE DISCLAIMED

UNDER APPLICABLE LAW ARE LIMITED IN DURATION TO THE WARRANTY PERIOD. NO WARRANTIES, EXPRESS OR IMPLIED, WILL APPLY AFTER THIS PERIOD. ALL INFORMATION, SPECIFICATIONS, PRICES, AND SERVICES ARE SUBJECT TO CHANGE AT ANY TIME WITHOUT NOTICE.

Limitation of liability

Your sole remedy under this limited warranty is set forth in this document. For any claim concerning performance or nonperformance of Lexmark or a Remarketer for this product under this limited warranty, you may recover actual damages up to the limit set forth in the following paragraph.

Lexmark's liability for actual damages from any cause whatsoever will be limited to the amount you paid for the product that caused the damages. This limitation of liability will not apply to claims by you for bodily injury or damage to real property or tangible personal property for which Lexmark is legally liable. IN NO EVENT WILL LEXMARK BE LIABLE FOR ANY LOST PROFITS, LOST SAVINGS, INCIDENTAL DAMAGE, OR OTHER ECONOMIC OR CONSEQUENTIAL DAMAGES. This is true even if you advise Lexmark or a Remarketer of the possibility of such damages. Lexmark is not liable for any claim by you based on a third party claim.

This limitation of remedies also applies to claims against any Suppliers and Remarketers of Lexmark. Lexmark's and its Suppliers' and Remarketers' limitations of remedies are not cumulative. Such Suppliers and Remarketers are intended beneficiaries of this limitation.

Additional rights

Some states do not allow limitations on how long an implied warranty lasts, or do not allow the exclusion or limitation of incidental or consequential damages, so the limitations or exclusions contained above may not apply to you.

This limited warranty gives you specific legal rights. You may also have other rights that vary from state to state.



P/N 12J0120

E.C. 2J0010

Lexmark and Lexmark with diamond design are trademarks of Lexmark International, Inc., registered in the United States and/or other countries.

Other trademarks are the property of their respective owners.

© 2002 Lexmark International, Inc.

740 West New Circle Road

Lexington, Kentucky 40550

Free Manuals Download Website

<http://myh66.com>

<http://usermanuals.us>

<http://www.somanuals.com>

<http://www.4manuals.cc>

<http://www.manual-lib.com>

<http://www.404manual.com>

<http://www.luxmanual.com>

<http://aubethermostatmanual.com>

Golf course search by state

<http://golfingnear.com>

Email search by domain

<http://emailbydomain.com>

Auto manuals search

<http://auto.somanuals.com>

TV manuals search

<http://tv.somanuals.com>