

Liebert Foundation®

Wall Mount Equipment Enclosures Designed For Tight Spaces

When floor space to secure electronic equipment is not available inside equipment closets or small rooms, often space on the wall can be found.

Liebert Foundation Wall Mount Enclosure systems provide an effective solution for these limited space equipment mounting applications — where both protection and security are required.



Hinged Body Model

Low Profile Unit



Two standard designs are offered: a Hinged Body model (with a nominal height, depth, width of 24" x 24" x 24") and a Low Profile unit (nominal 24" x 12" x 24").

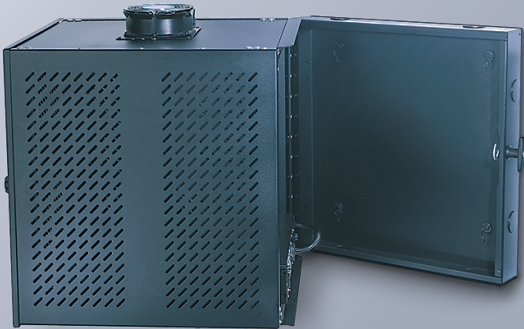
All Liebert Foundation Wall Mount systems include:

- Vented front and sides for enhanced heat rejection.
- Secure latching doors with key lock.
- Knockouts for top, bottom and side cable access.
- Reversible positioning for left/right access door hinging.
- Optional feet or casters for floor mounting.
- Grounding lug.
- Durable powder paint coated black.

Liebert Foundation Wall Mount 24" x 24" Hinged Body Model

The 24" x 24" Hinged Body model features:

- 12U front and rear adjustable position 19" rack rails.
- Swing-out body design to allow for easy rear equipment access.
- Provisions for field addition of optional top and/or bottom cooling fan.
- Supports up to 175 pounds of user equipment.
- Provisions to support mounting options such as fixed or pullout shelf.



Wall mounting hardware field supplied per local codes and requirements.



Liebert Foundation Wall Mount 24" x 12" Low Profile Model

The 24" x 12" Low Profile model includes:

- Reduced depth for tight spaces.
- 12U front and 6U side adjustable position 19" rack mounting rails.
- Unique side access rack mounting section for deep components.
- Supports 100 pounds of user equipment.

Liebert Corporation

1050 Dearborn Drive
P.O. Box 29186
Columbus, Ohio 43229
800 877 9222 Phone (U.S. & Canada Only)
614 888 0246 Phone (Outside U.S.)
614 841 6022 FAX

Via Leonardo Da Vinci 8
Zona Industriale Tognana
35028 Piove Di Sacco (PD)
Italy
39 049 9719 111 Phone
39 049 5841 257 FAX

Emerson Network Power Asia Pacific
7/F., Dah Sing Financial Centre
108 Gloucester Rd, Wanchai
Hong Kong
852 25722201 Phone
852 28029250 FAX

liebert.com

24 x 7 Tech Support

800 222 5877 Phone
614 841 6755 (outside U.S.)

While every precaution has been taken to ensure accuracy and completeness in this literature, Liebert Corporation assumes no responsibility, and disclaims all liability for damages resulting from use of this information or for any errors or omissions.

© 2005 Liebert Corporation. All rights reserved throughout the world. Specifications subject to change without notice.

All names referred to are trademarks or registered trademarks of their respective owners.

® Liebert and the Liebert logo are registered trademarks of the Liebert Corporation.

SL-15601 (R02/06) Printed in USA

Emerson Network Power.

The global leader in enabling business-critical continuity.

- AC Power Systems
- Connectivity
- DC Power Systems
- Embedded Power
- Power Protection
- Integrated Cabinet Solutions
- Outside Plant
- Precision Cooling
- Site Monitoring and Services

Emerson Network Power and the Emerson Network Power logo are trademarks and service marks of Emerson Electric Co.
©2005 Emerson Electric Co.

Free Manuals Download Website

<http://myh66.com>

<http://usermanuals.us>

<http://www.somanuals.com>

<http://www.4manuals.cc>

<http://www.manual-lib.com>

<http://www.404manual.com>

<http://www.luxmanual.com>

<http://aubethermostatmanual.com>

Golf course search by state

<http://golfingnear.com>

Email search by domain

<http://emailbydomain.com>

Auto manuals search

<http://auto.somanuals.com>

TV manuals search

<http://tv.somanuals.com>