

Liebert Intellislot® Web Card

Quick Start Guide

1 INSTALL

- Locate the Intellislot option bay on your Liebert equipment—You might need to remove a plastic cover.
- Insert the IntelliSlot Web Card into the Intellislot bay.
- Secure the card with the supplied screws.
- Connect an Ethernet cable.

DHCP: The card ships with DHCP service enabled. The MAC address is printed on a sticker affixed to the top of the card.

OR

Static IP: To assign a static IP address, use the Service Terminal to configure the card. Proceed to Steps 2 & 3.

2 CONNECT THE CABLE

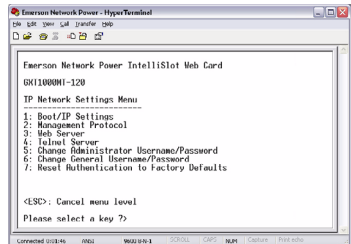
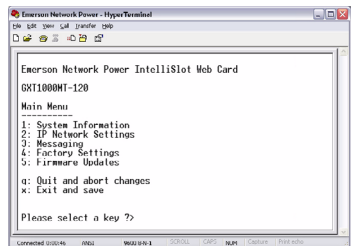
- Locate the blue serial configuration cable (null modem) that shipped with the card.
- Connect the configuration cable to the DB-9 port on the card and to a COM port on your PC.

3 CONFIGURE THE CARD

- Use terminal emulation software, such as HyperTerminal™, to open a direct connection to the card.

Baud Rate: 9600
Data Bits: 8
Parity: None
Stop Bits: 1
Flow Control: None

- Press **Enter** for the Main Menu, above right.
- Select option **2** and follow the instructions to enter an IP ADDRESS, NETMASK and GATEWAY.
- Press **Esc** to return to the Main Menu.
- Enter **X** and press **Enter** to exit HyperTerminal and save your changes.



NOTE

When installing the card in a Liebert NX™, configure the communication port of NX to 2400 baud. Refer to the NX user manual for instructions.

User Manual

This Quick Start Guide is designed to give you the information you need to install and configure the Liebert Intellislot Web Card. A full user manual, SL-52615, is available online at www.liebert.com. Liebert highly recommends that new users consult the user manual.

Web Support

The Intellislot Web Card delivers Web management and control to Liebert equipment. All users on your network will be able to view status information. Control and configuration capabilities are protected by a username and password combination. The default username is "Liebert" and the default password is also "Liebert."

You can change the password from the Web or from the service terminal.

WARNING: Change the username and password today to prevent unauthorized access.

SNMP Support

The Liebert Intellislot Web Card enables SNMP management of Liebert equipment. To integrate the card into your SNMP implementation, you will need to compile the Liebert Global Products MIB on your network management station (NMS). The Liebert Global Products MIB is included in this package on

CD-ROM and supports both Windows and Unix file formats.

Liebert OpenComms Nform Support

Utilizing the SNMP and Web technologies built into each of the Intellislot Web cards, Liebert OpenComms Nform will centrally manage alarm notifications to provide you with an easy interface to access critical system information.

A downloadable edition is available online at nform.liebert.com.

Liebert MultiLink™ Support

The Liebert Intellislot Web Card installed in a UPS may be used with Liebert MultiLink software, providing unattended, graceful operating system shutdown. The card can be monitored by MultiLink over the network, eliminating the need for serial cables.

Downloadable versions of MultiLink and information about MultiLink are available online at multilink.liebert.com

Technical Support/Service

Web Site

www.liebert.com

Monitoring

800-222-5877

monitoring@emersonnetworkpower.com

Outside the US: 614-841-6755

Locations

United States

1050 Dearborn Drive

P.O. Box 29186

Columbus, OH 43229

Locations

Europe

Via Leonardo Da Vinci 8

Zona Industriale Tognana

35028 Piove Di Sacco (PD) Italy

+39 049 9719 111

Fax: +39 049 5841 257

Asia

7/F, Dah Sing Financial Centre

108 Gloucester Road, Wanchai

Hong Kong

852 2572201

Fax: 852 28029250

SL-52600_REV07_04-08



EMERSON
Network Power

Free Manuals Download Website

<http://myh66.com>

<http://usermanuals.us>

<http://www.somanuals.com>

<http://www.4manuals.cc>

<http://www.manual-lib.com>

<http://www.404manual.com>

<http://www.luxmanual.com>

<http://aubethermostatmanual.com>

Golf course search by state

<http://golfingnear.com>

Email search by domain

<http://emailbydomain.com>

Auto manuals search

<http://auto.somanuals.com>

TV manuals search

<http://tv.somanuals.com>