

LIEBERT MP™ ADVANCED POWER STRIPS

QUICK-START GUIDE: OPENCOMMS EM OR MP ADVANCED ACCESS SERVER

SAVE THESE IMPORTANT SAFETY INSTRUCTIONS

This manual contains important safety instructions. Read all safety, installation and operating instructions before installing the Liebert MP Advanced Power Strip or Access Server. Adhere to all warnings on the unit and in this manual. Follow all operating and user instructions. Individuals without previous training can install and operate this equipment.

The Liebert MP Advanced Power Strip and Access Server are not intended for use with life support or other designated critical devices. Maximum load must not exceed that shown on the Liebert MP Advanced Power Strip or Access Server rating label. The Liebert MP Advanced Power Strip and Access Server are designed for data processing equipment. If uncertain, consult your local dealer or Liebert representative.



WARNING

Opening or removing the cover of MP Advanced Power Strips or Access Servers may expose you to lethal voltages within the unit.

Observe all cautions and warnings in this manual. Failure to do so may result in serious injury or death. Do not attempt to service this product yourself. Refer all service to qualified service personnel. Never work alone.

Operate the Liebert MP Advanced Power Strip and Access Server in an indoor environment only in an ambient temperature range of 32°F to +104°F (0°C to +40°C). Install it in a clean environment, free from conductive contaminants, moisture, flammable liquids, gases and corrosive substances.



WARNING

The Liebert MP Advanced Power Strip and Access Server contain no user serviceable parts. Under no circumstances attempt to gain internal access due to risk of electric shock or burn. Do not continue to use the Liebert MP Advanced Power Strip or Access Server if the LED panel or monitoring interface indicators are not in accordance with these operating instructions. Refer all faults to your local dealer or Liebert representative.

Never block or insert any object into the Liebert MP Advanced Power Strip or Access Server.

DO NOT CONNECT equipment that could overload the Liebert MP Advanced Power Strip or Access Server.

Refer to the Liebert MP Advanced Power Strip and Access Server user manual, SL-20815, to determine the electrical ratings and specifications of your Liebert MP Advanced Power Strip or Access Server. It is imperative that the power supply and connections match the specifications of the power strip or access server being installed.



CAUTION

Connecting your Liebert MP Advanced Power Strip, Access Server or rack equipment to a power supply with an incorrect rating in either voltage, amperes or phase may damage the connected equipment and your Liebert MP Advanced Power Strip or Access Server.

If you have questions about the power supply connections, contact your local Liebert representative or Liebert Technical Support at 1-800-222-5877.



CAUTION

Shut down and unplug all equipment in your rack enclosure before beginning to connect the equipment to your Liebert MP Advanced Power Strip or Access Server.

When connecting the rack equipment to the Liebert MP Advanced Power Strip's receptacles, arrange cables and connections to avoid tangling and crisscrossing the power cables.

For power management purposes, record the receptacle where each piece of equipment is connected. Receptacles on the Liebert MP Advanced Power Strip have a numerical designation. Liebert MP Advanced Power Strips with more than one circuit are named with numbers and letters.

When connecting power to the Liebert MP Advanced Power Strip's receptacles, follow generally accepted procedures, such as routing the power cables separately from low-voltage communication and control wires to prevent electromagnetic interference.



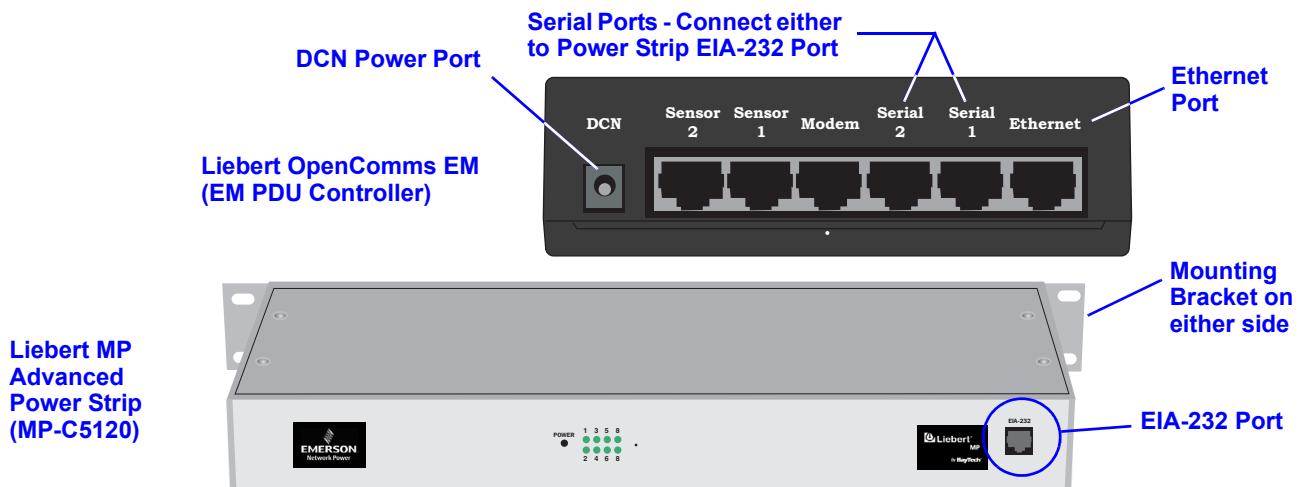
CAUTION

All configuration steps in this quick start guide must be completed before attempting to start up equipment connected to the Liebert MP Advanced Power Strip or Access Server.

WHAT'S INCLUDED

Make sure you have all the items that should be included with your Liebert MP Advanced Power Strip and Access Server. If any item is missing or damaged in shipping, file a damage claim immediately—see the user manual, SL-20815, for details.

- RJ-45 to RJ-45 configuration cable, 5 ft. (1.5m)
- RJ-45 to DB9 adapter for configuration cable
- 2 mounting brackets and 4 screws
- Quick-start guide
- User manual



CONFIGURATION WITH OPENCOMMS EM

1. Connect power to the DCN port on the OpenComms EM and to your MP Advanced Power Strip.
2. Connect the six-wire end of the serial cable provided with the OpenComms EM to the EIA-232 port of your MP Advanced Power Strip.
3. Connect the other end (eight-wire) of the serial cable to either Serial 1 or Serial 2 of the OpenComms EM.
4. Connect a straight-through CAT5 Ethernet cable from your network to the Ethernet port on the back of the OpenComms EM.

A ASSIGN AN IP ADDRESS

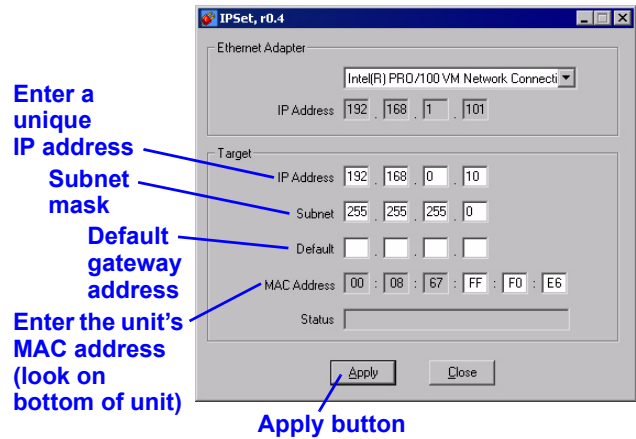


NOTE

These steps must be done on the same network segment where the OpenComms EM is connected.

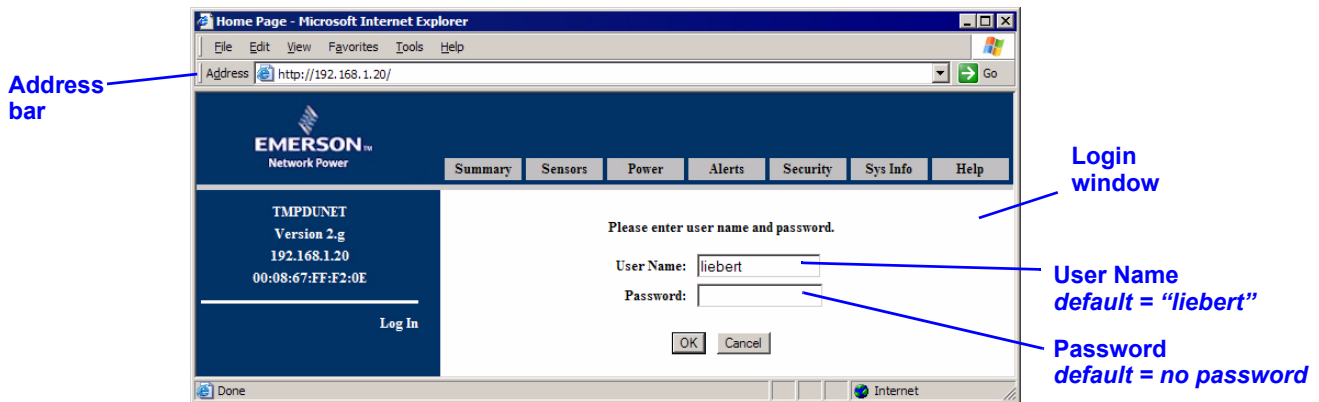
If your network uses static IP addresses and your computer has a Windows operating system, follow the steps below. Otherwise, consult the OpenComms EM user manual (SL-28210).

1. Obtain an IP address for the OpenComms EM from your network administrator.
2. Insert the OpenComms EM CD in your computer's CD drive.
3. Click on the **Start** button, then on **Run**, then **Browse** to the file **IPSET.exe** on the CD and click **Open**.
4. Click **OK** to open the IPSet window (at right).
5. In the Target area:
 - a. Enter the OpenComms EM IP address
 - b. Enter your network's Subnet Mask
 - c. Enter your router's IP address in the Default box.
 - d. Enter the MAC address found on the bottom of your OpenComms EM.
6. **Apply** the changes. If the device identification is successful, the message "Successfully set IP address" appears in the Status box. (If not, the message "No response from target" appears in the Status box.)
7. Click on the **Close** button.



B OPEN THE WEB INTERFACE AND LOG IN

- Open an Internet browser and enter the unit's IP address or hostname into the browser's address bar and press the Enter key. The Login window appears.



- Enter the default user name—**liebert**—in the User Name box (case-sensitive).
- Leave the Password box blank (the default **liebert** user account has no password).
- Click **OK**. If the login is successful, a message appears. Click **OK**.

When ready to exit the user interface, click on the **Summary** tab at the top of the Web interface, then click on the **Log Out** button in the left side of the window.

CONFIGURATION WITH LIEBERT MP ADVANCED ACCESS SERVER

2

Liebert MP Advanced Power Strip (MP-C5120)

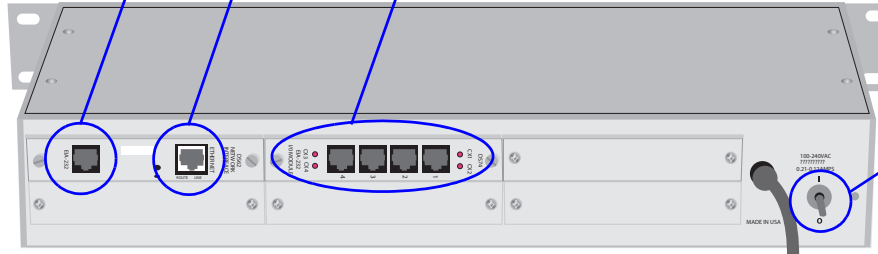


Mounting Bracket on either side

EIA-232 Port

EIA-232 Port - Connect to Power Strip EIA-232 Port

Liebert MP Advanced Access Server (MP-S5138)



Ethernet Port

MP-DS74 Card With Configurable Communication Ports

On/Off Switch (not on all models)

A

MAKE CONNECTIONS

1. Connect power to the Liebert MP Advanced Access Server and turn the unit On (the On/Off switch is on the rear of the unit; some units do not have this switch; they are energized whenever their power cord is plugged into a power source).
2. Attach the adapter (RS-232 to RJ-45) to one end of a silver configuration cable (included) and connect that end of the cable to a COM port on a computer. Connect the other end of the cable to the EIA-232 port of the MP-DS62 card on your MP Advanced Access Server.
3. Plug one end of the second silver RJ-45 cable into any of the ports in the MP-DS74 module in your Liebert MP Advanced Access Server; plug the other end of the cable into the EIA-232 port on your MP Advanced Power Strip.

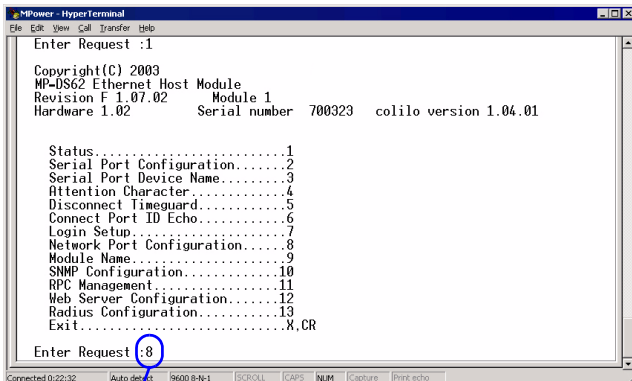
B

ESTABLISH COMMUNICATION WITH CARD

1. Use terminal emulation software, such as HyperTerminal™, to open a direct connection to the MP-DS62 card. Use the settings at right. Press Enter for the Main Menu, choose “C” and then “1” to configure the MP-DS62 port.
2. Enter “8” for Network Port Configuration (below left), then “7,” then “N” to disable DHCP (below right).

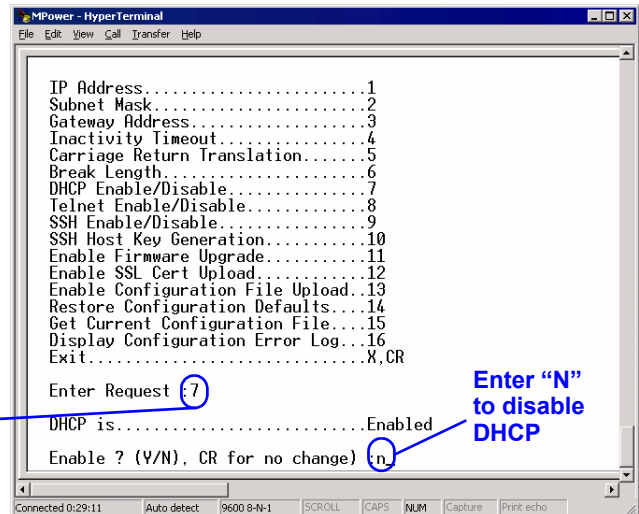
HYPERTERMINAL SETTINGS

Baud Rate: 9600
 Data Bits: 8
 Parity: None
 Stop Bits: 1
 Flow Control: N/A



Choose “8” to change Network Port Configuration

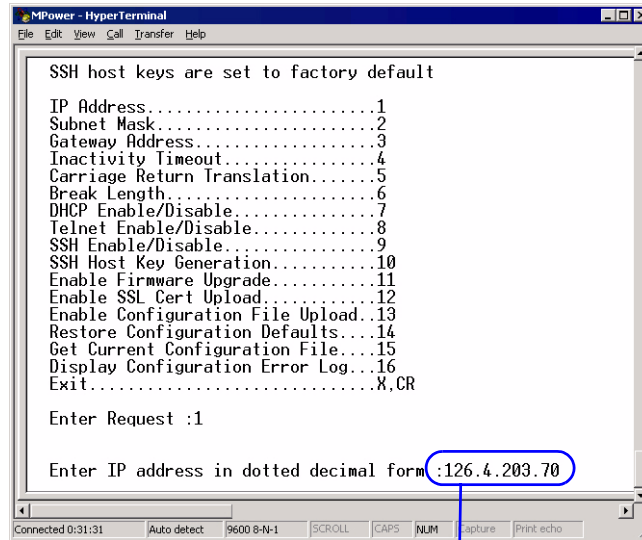
Enter “7” to change DHCP setting



Enter “N” to disable DHCP

C SET THE IP ADDRESS

1. Select “1” to set the IP Address for Module 1. Enter an IP address (below). The address must be unique on your system (obtain this from your network administrator).
2. Press Enter to return to the Network Port Configuration menu.

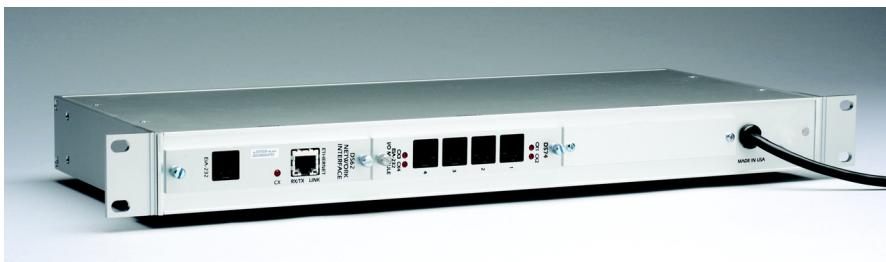
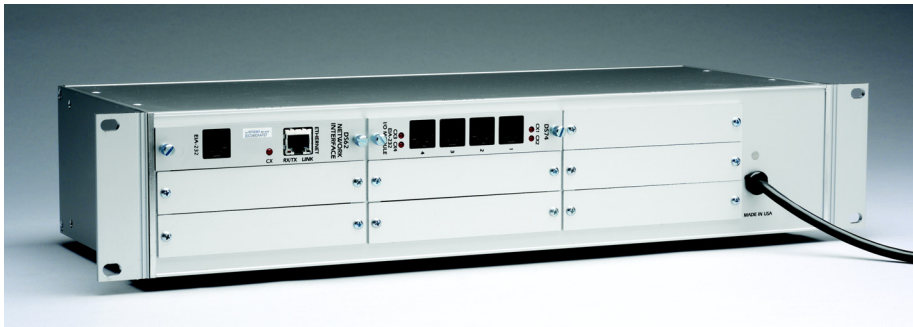


Enter IP address

3. Choose “2” to set the Subnet Mask for your system (obtain this from your network administrator).

D SET THE GATEWAY ADDRESS

1. Return to the Network Port Configuration menu and choose “3” to set the Gateway Address (the IP address of your network router). Follow the prompts to exit HyperTerminal and save your changes.
2. Verify that your settings are correct and were saved by using a command prompt to ping the MP-C/MP-S unit: Start>Run>CMD.
3. At the command prompt enter:
`ping [IP address]`
4. Press “Enter.”



Liebert Corporation

1050 Dearborn Drive
 P.O. Box 29186
 Columbus, OH 43229

Telephone: 1-800-877-9222
 Facsimile: 1-614-841-6022
 www.liebert.com



© 2006 Liebert Corporation
 All rights reserved throughout the world. Specifications subject to change without notice.

® Liebert and the Liebert logo are registered trademarks of Liebert Corporation. All names referred to are trademarks or registered trademarks of their respective owners.

SL-20812 (01/06) Rev. 2

Free Manuals Download Website

<http://myh66.com>

<http://usermanuals.us>

<http://www.somanuals.com>

<http://www.4manuals.cc>

<http://www.manual-lib.com>

<http://www.404manual.com>

<http://www.luxmanual.com>

<http://aubethermostatmanual.com>

Golf course search by state

<http://golfingnear.com>

Email search by domain

<http://emailbydomain.com>

Auto manuals search

<http://auto.somanuals.com>

TV manuals search

<http://tv.somanuals.com>