

CONSOLE ASSEMBLIES:

BASIC ENG - BAS-000X-0103

BASIC GER - BAS-020X-0103

ADVANCED ENG - ADV-000X-0103

ADVANCED GER - ADV-020X-0103

END CAP  
REX21MV  
END CAP SCREWS  
REXOKC6

X1 MODEL BADGE  
REX2G6Z

FRONT  
COMPONENTS

WATER BOTTLE  
REX2B96  
WATER BOTTLE HOLDER  
REX21CV  
MTG. SCREWS  
REXOK4R

Hardware Bag: REX2B06  
Touch-up Paint: 7967401  
Operation Manuals:

English - 8117901  
German - 8118001  
French - 8118101  
Spanish - 8118201  
Russian - 8118301

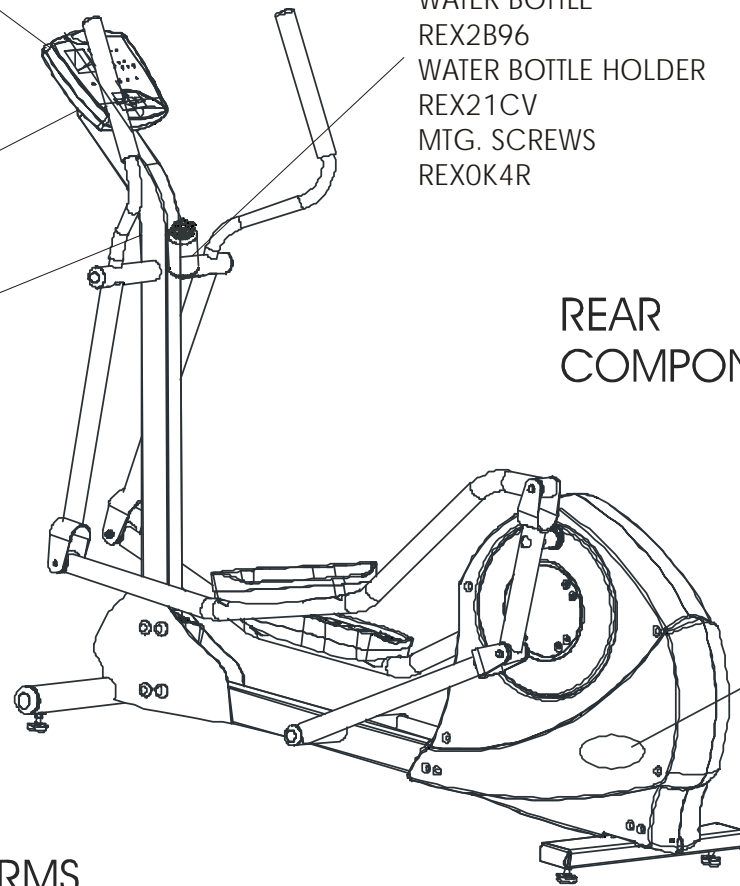
REAR  
COMPONENTS

LF LOGO LABEL  
REX2ARH

MOVEMENT ARMS  
& HARDWARE

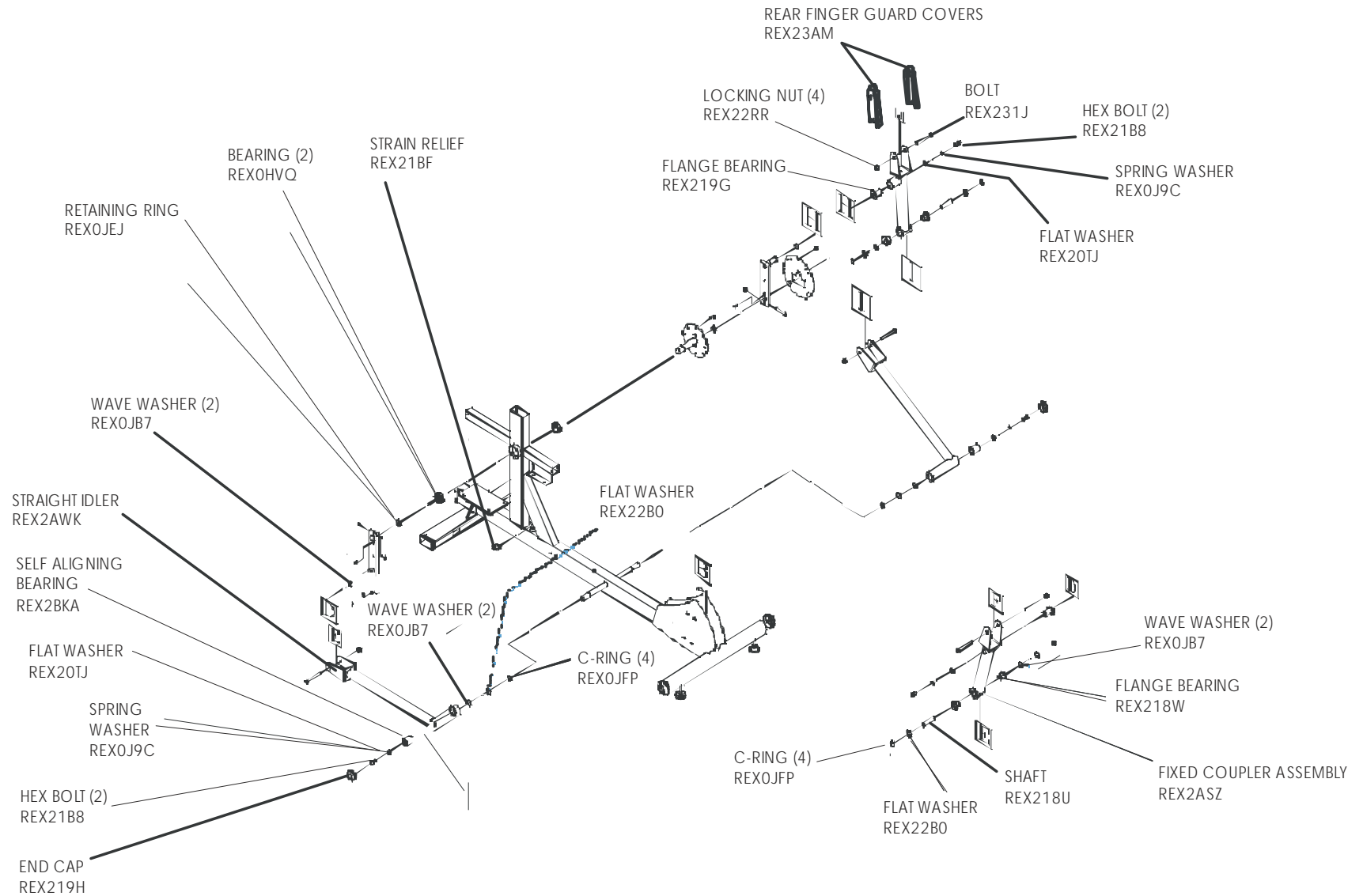
BLOCK  
DIAGRAM

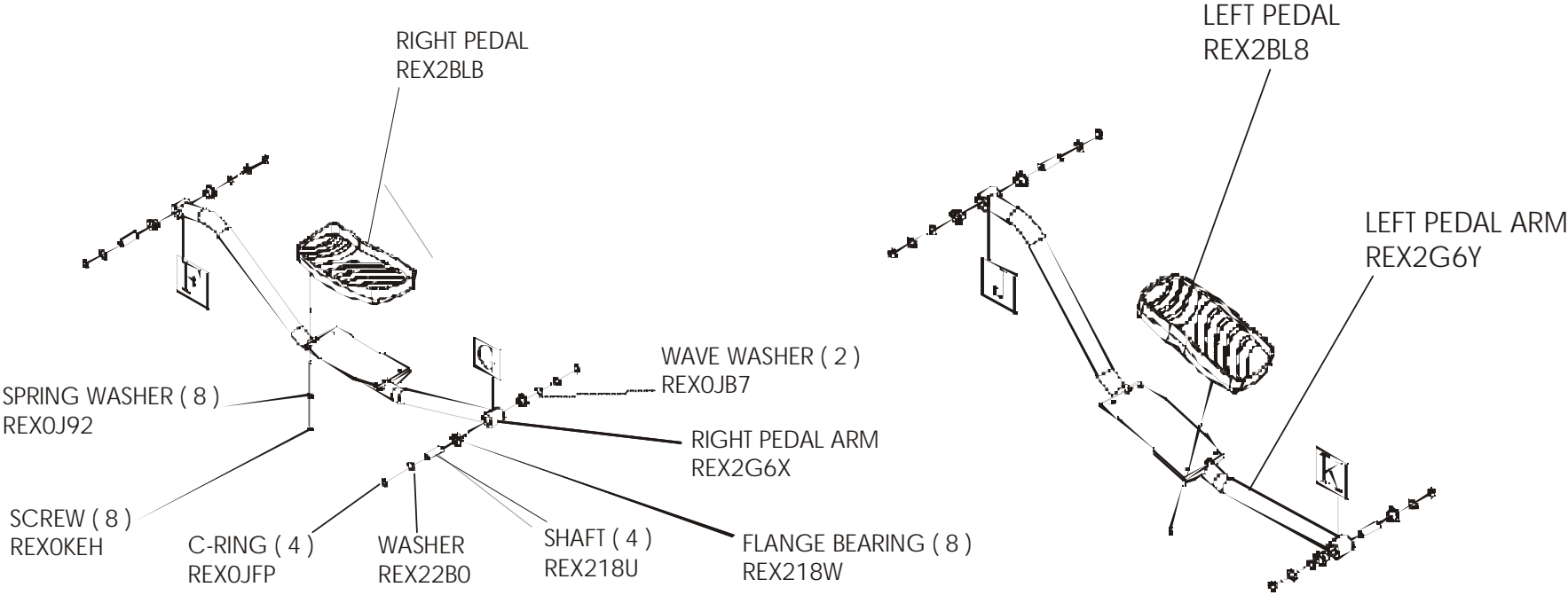
CABLES



# LF Cross-Trainer Movement Arms and Hardware

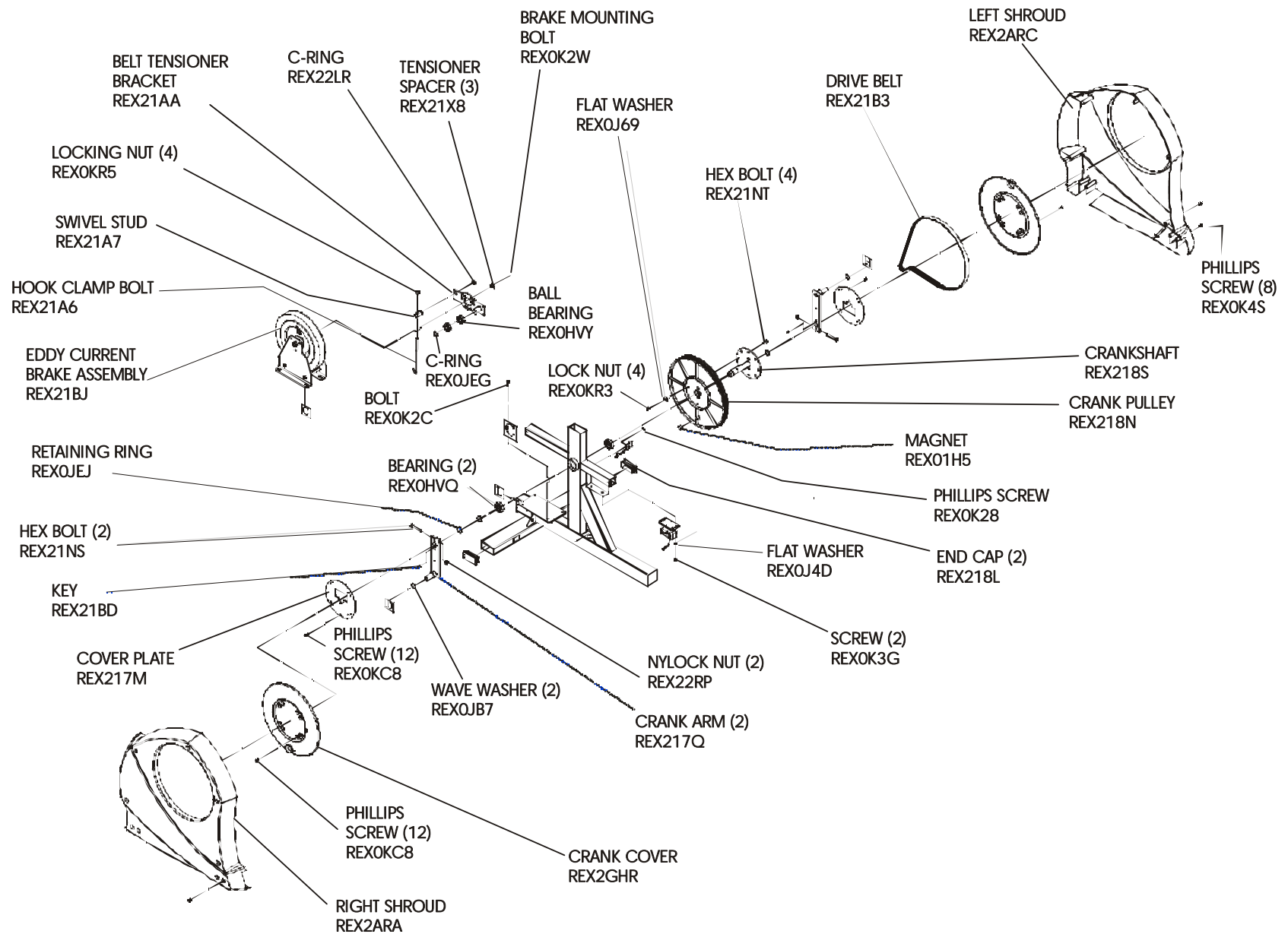
X1-XX00-0103



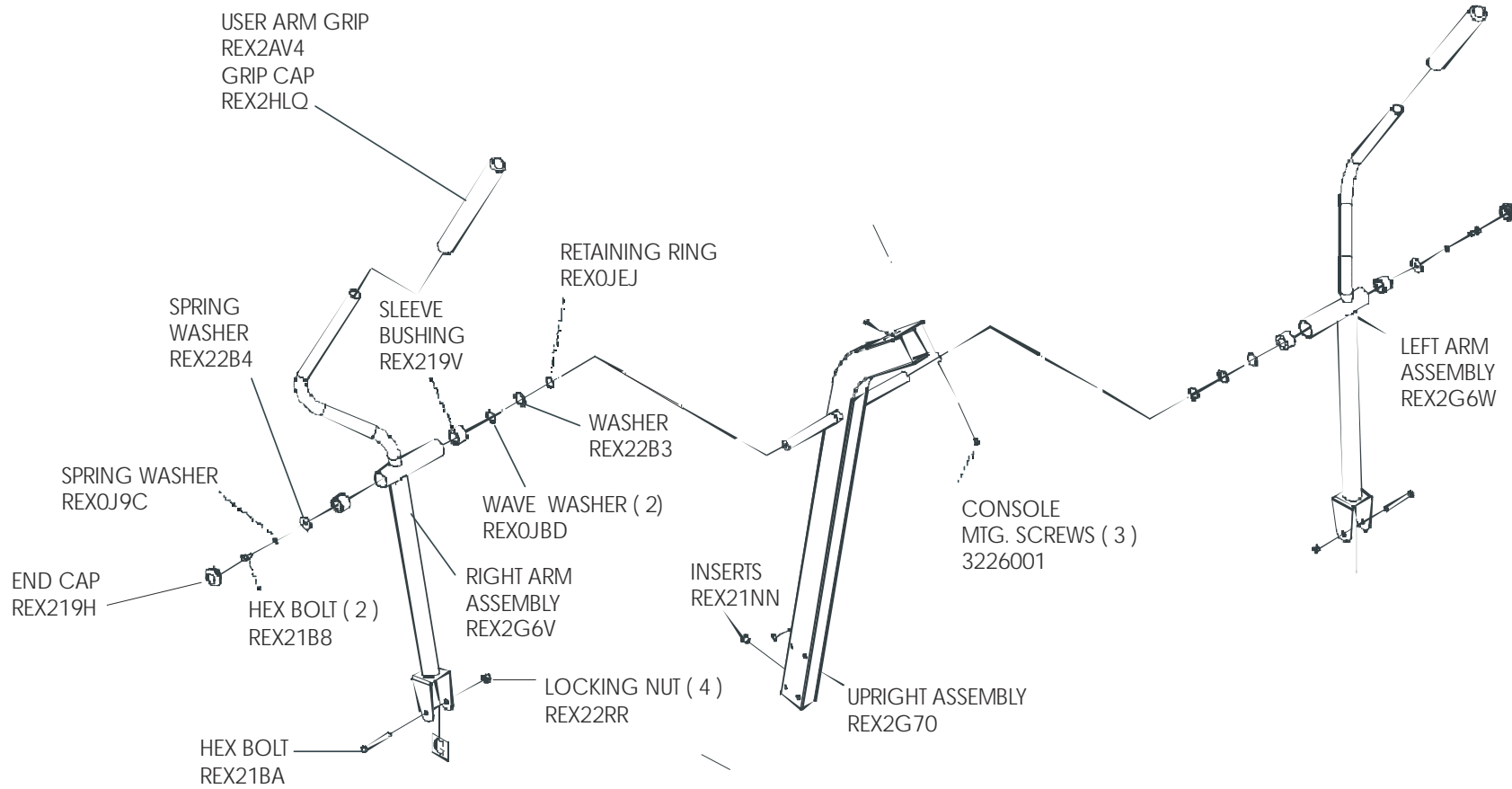


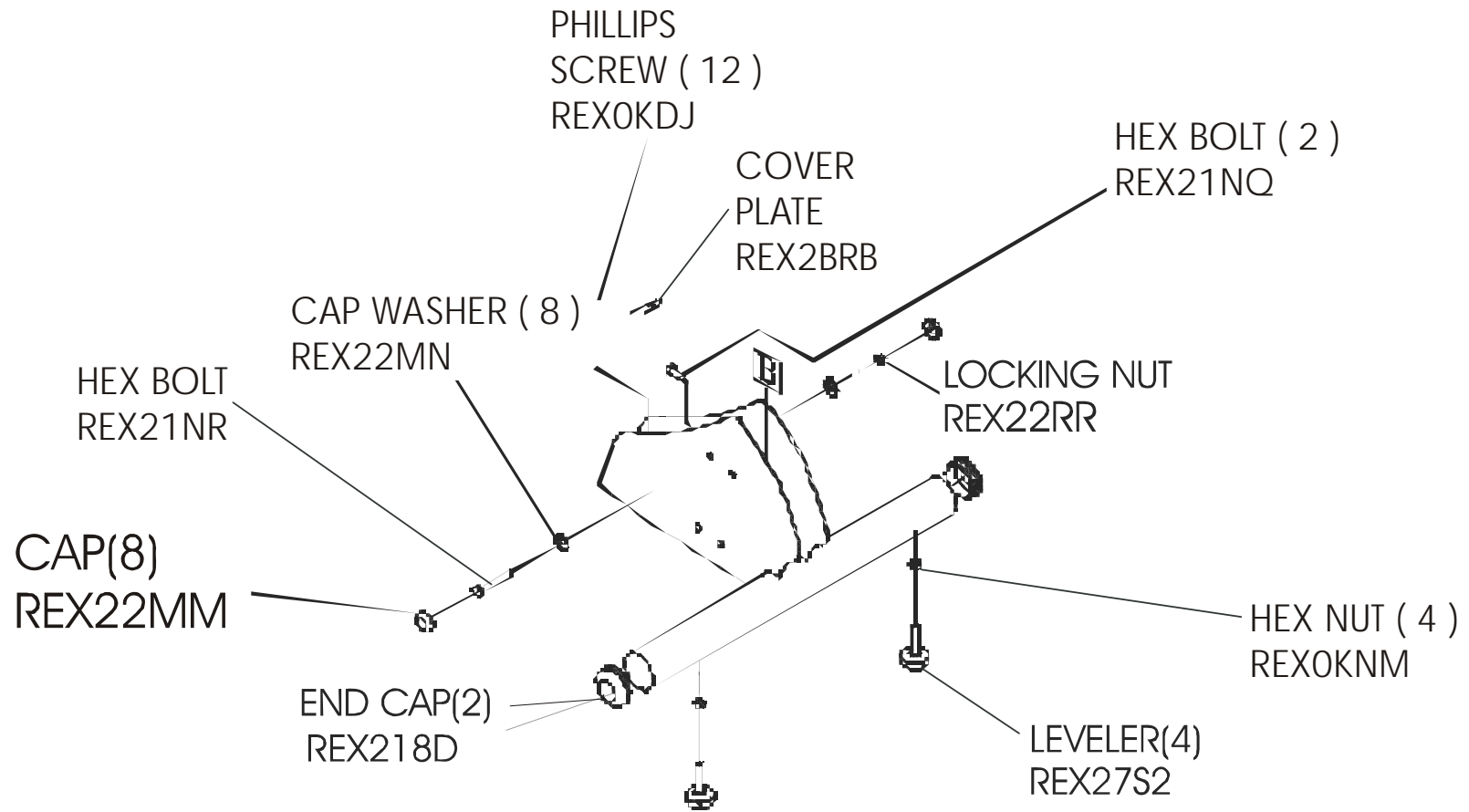
# LF Cross-Trainer Rear Components

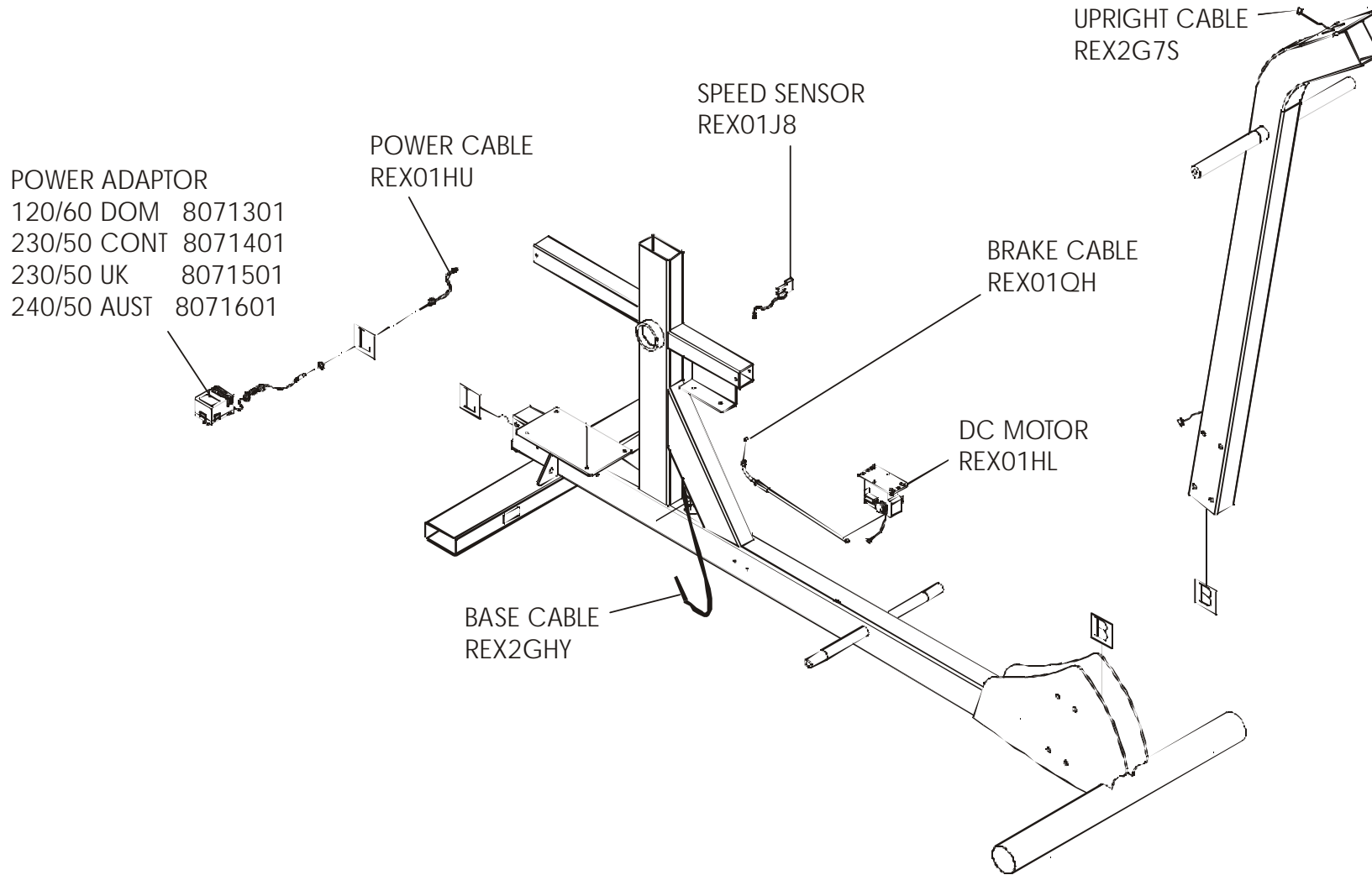
X1-XX00-0103

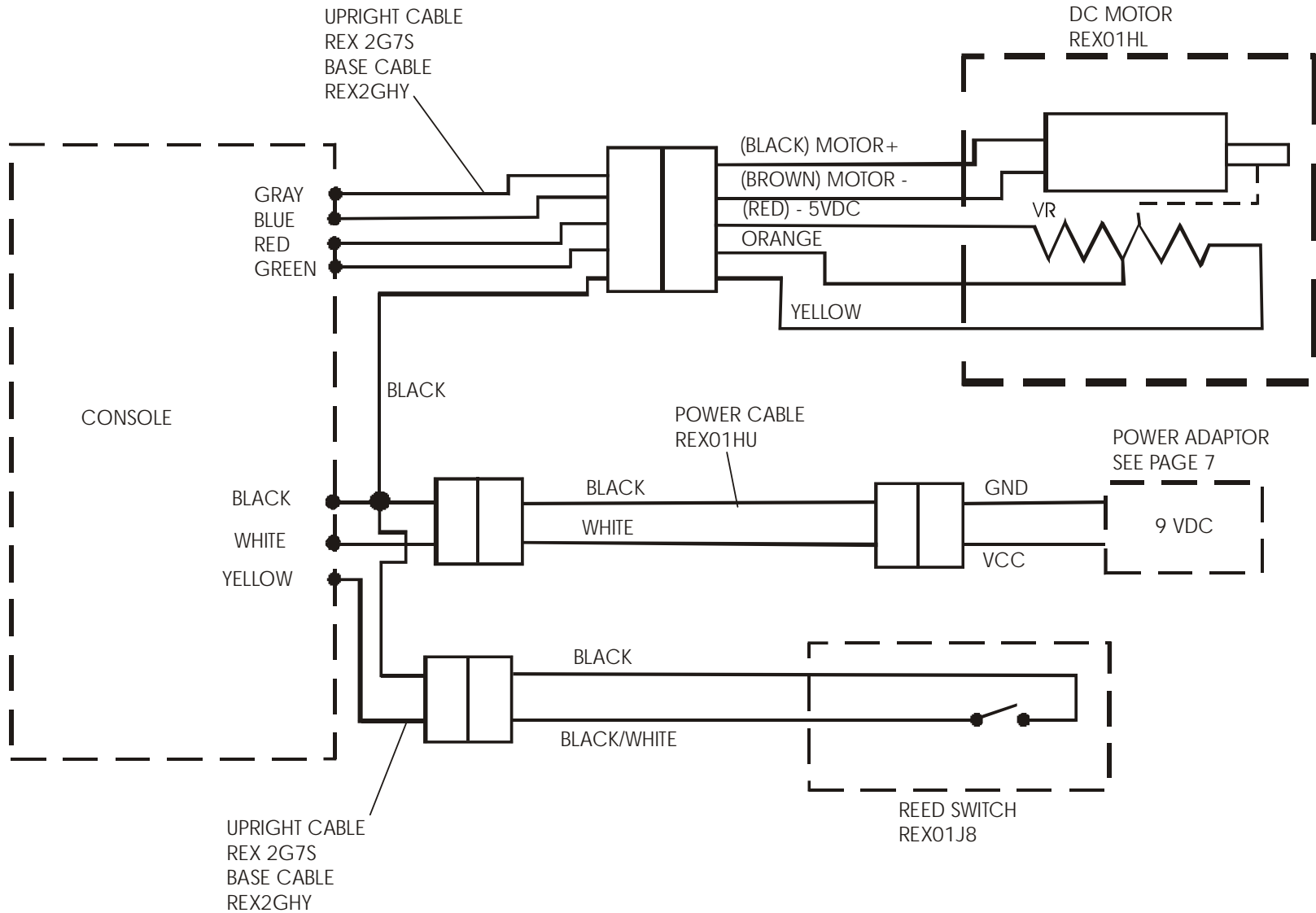


NOT SHOWN: STATIONARY GRIP - REX27SA  
STATIONARY GRIP CAP - REX2BKF











## Free Manuals Download Website

<http://myh66.com>

<http://usermanuals.us>

<http://www.somanuals.com>

<http://www.4manuals.cc>

<http://www.manual-lib.com>

<http://www.404manual.com>

<http://www.luxmanual.com>

<http://aubethermostatmanual.com>

Golf course search by state

<http://golfingnear.com>

Email search by domain

<http://emailbydomain.com>

Auto manuals search

<http://auto.somanuals.com>

TV manuals search

<http://tv.somanuals.com>