

# INSTALLATION PROCEDURE FOR CALCULITE® REMODELER KITS

# IS:A400RM

0890

Page 1 of 2

## READ AND UNDERSTAND THESE INSTRUCTIONS BEFORE INSTALLING FIXTURE.

This fixture is intended for installation in accordance with the National Electrical Code and local regulations. To assure full compliance with local codes and regulations, check with your local electrical inspector before installation. To prevent electrical shock, turn off electricity at fuse box before proceeding.

Retain these instructions for maintenance reference.

**WARNING—(RISK OF FIRE) DO NOT INSTALL INSULATION WITHIN 3 INCHES OF FIXTURE SIDES OR WIRING COMPARTMENT, NOR ABOVE FIXTURE IN SUCH A MANNER TO ENTRAP HEAT.**

### EXISTING CONSTRUCTION

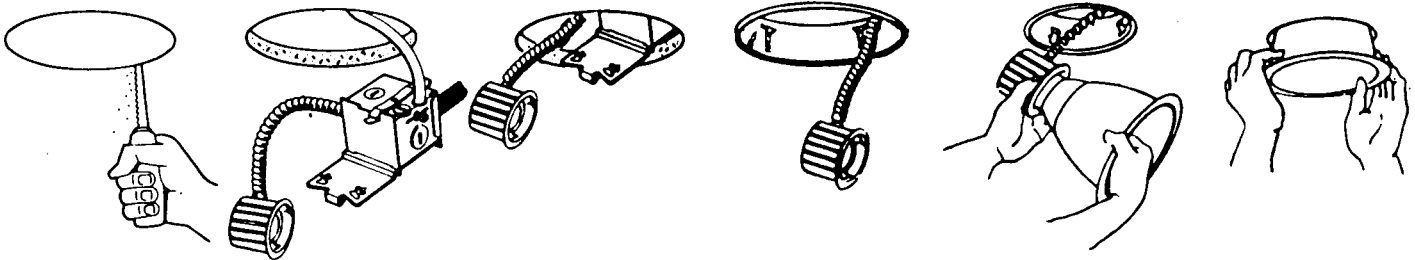


FIG. A  
I. CUT OPENING

FIG. B  
II. WIRE-IN

FIG. C  
III. ATTACH J-BOX

FIG. D  
IV. ATTACH  
MOUNTING RING

FIG. E  
V. SNAP-ON

FIG. F  
VI. PUSH-UP

### I. CUT OPENING (Fig. A)

Use MOUNTING RING provided as a template to cut a hole in the ceiling. Use inside diameter to scribe hole.

### II. WIRE-IN (Fig. B)

Wire to supply leads. (For Cable, use built-in Cable Clamp in J-Box.) White fixture lead to neutral supply lead. Black fixture lead to hot (120V) supply lead. Bare fixture wire to supply ground. Use wirenuts (local hardware item). Place all electrical connections in the J-BOX. Attach J-BOX COVER onto J-BOX.

### III. ATTACH J-BOX (Fig. C & G)

1. Attach J-BOX PLATE to ceiling by pushing NAIL TAB on J-BOX PLATE into ceiling, Fig. G.
2. Push LONG LEG of NAIL CLIPS (supplied in parts bag) into RAISED BUMP of J-BOX PLATE and SHORT LEG into ceiling, Fig. G.
3. Make sure that the J-BOX PLATE is securely attached to the ceiling and the J-BOX is in the position shown in Fig. G.

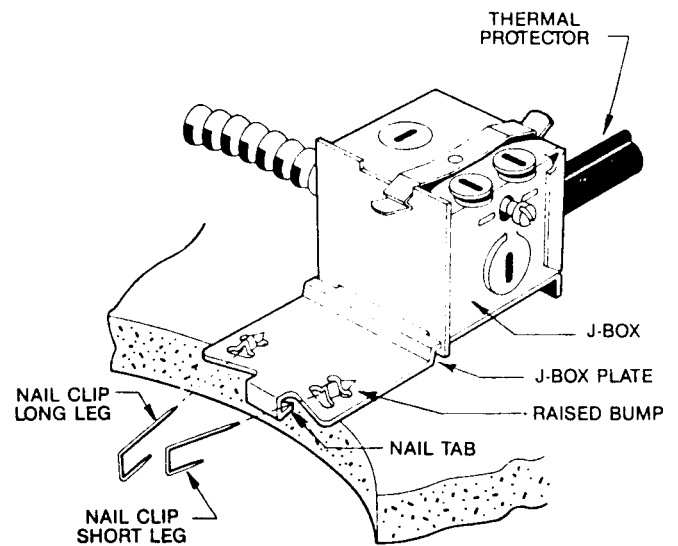


FIG. G

#### IV. ATTACH MOUNTING RING

Insert MOUNTING RING into CEILING as shown (Fig. H).

#### CLIP ASSEMBLY (Fig. I)

1. Insert CLIP from inside housing, through "T" slot.
2. Apply downward force with screwdriver on top of CLIP or engage screwdriver in slot in CLIP's flange.
3. Apply force until CLIP is snugly seated.

#### CLIP REMOVAL (Fig. J)

1. Insert a small blade, short-handled screwdriver through the CLIP's screwdriver slot, and press against the opposite side of the CLIP.
2. Push CLIP up to top of "T" SLOT and remove.

#### V. SNAP-ON (Fig. E)

SEE SEPARATE REFLECTOR TRIM INSTRUCTION SHEETS

#### VI. PUSH-UP (Fig. F)

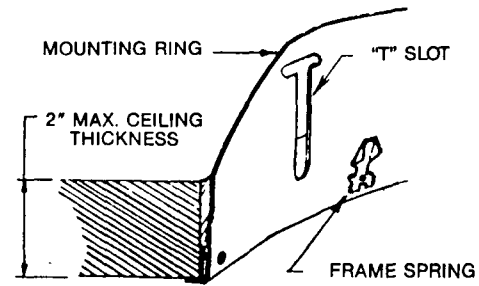


FIG. H

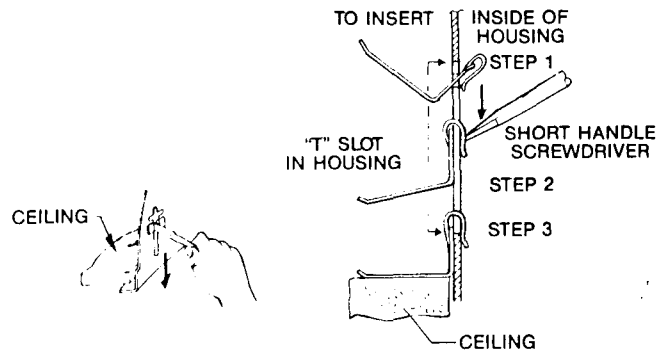


FIG. I

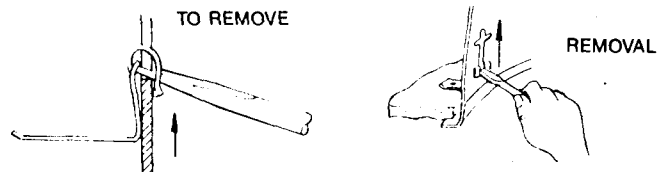


FIG. J

**WARNING: USE ONLY REFLECTOR TRIMS PROVIDED BY LIGHTOLIER INC. USE OF OTHER MANUFACTURERS' REFLECTOR TRIMS VOIDS THE UNDERWRITERS LABORATORIES LISTING AND COULD CONSTITUTE A FIRE HAZARD.**

## Free Manuals Download Website

<http://myh66.com>

<http://usermanuals.us>

<http://www.somanuals.com>

<http://www.4manuals.cc>

<http://www.manual-lib.com>

<http://www.404manual.com>

<http://www.luxmanual.com>

<http://aubethermostatmanual.com>

Golf course search by state

<http://golfingnear.com>

Email search by domain

<http://emailbydomain.com>

Auto manuals search

<http://auto.somanuals.com>

TV manuals search

<http://tv.somanuals.com>