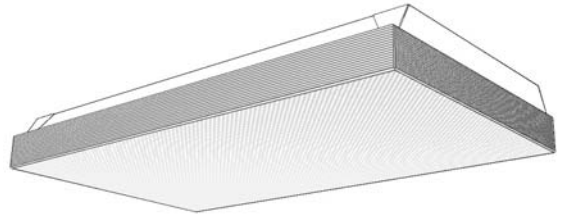


DominaireII WB Series 417/2FT

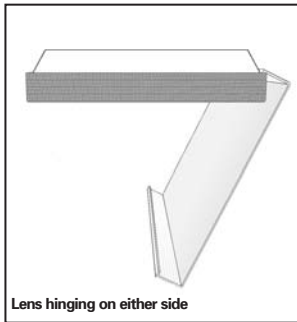
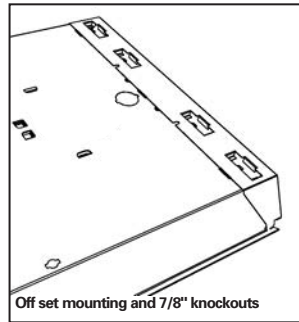
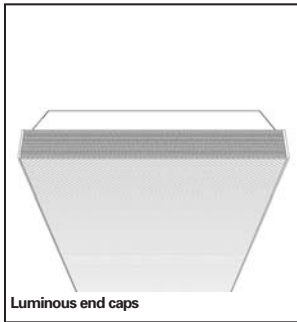
Surface Wraparound Fluorescent
14" Wide X 3" Deep X 24" Length, T8 OR TT5 Lamps

Features

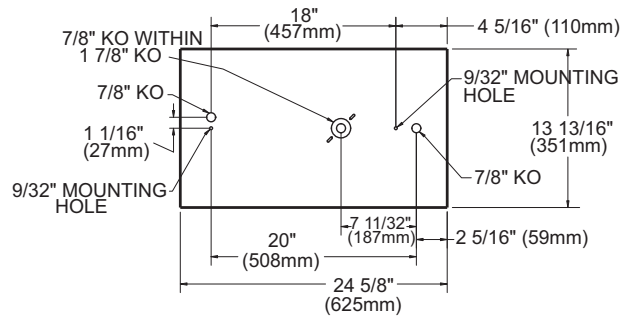
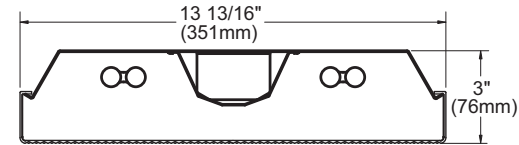
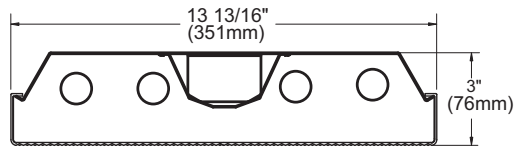
- Excellent for lighting Cafeterias, Small Offices, Corridors, Kitchens and Family Rooms.
- Step back housing for an apparent depth of 1½".
- Completely assembled with setup ends with lamp holders.
- Only 3" total depth.
- Prismatic virgin acrylic lens - 14" wide.
- 69% efficient (4 Lamp T8).
- 72.1% efficient (2 Lamp TT5).
- Luminous catadioptric end caps.
- Self-leveling lens opens and hinges from either side.
- Off-center 7/8" K.O. for flush mount to T-grid ceiling.
- For surface mounting only.



Features



Dimensions



Job Information

Type:

Job Name:

Cat. No.:

Lamp(s):

Volts/Ballast:

Lightolier a Genlyte company

www.lightolier.com

Technical Information: (978) 657-7600 • Fax (978) 658-0595

631 Airport Road, Fall River, MA 02720 • (508) 679-8131 • Fax (508) 674-4710

We reserve the right to change details of design, materials and finish.

© 2007 a Genlyte company

Section 3A/Folio H90-15

DominaireII WB Series 417/2FT

Model No. WB2B417UNVH4

LER = FP - 61.5 IW - 54.3 BF - 0.88
Comparative yearly lighting energy cost per 1000 lumens = \$3.90

Report Number: G2007050
Lamp: (4) F17T8
Luminaire: Dominaire II WB with clear prismatic lens
Ballast: B4321UNVHP-A (Triad)
Report is based on 1375 Lumens per lamp.
Efficiency: 69.0%
CIE Type - Direct
Plane: 0-Deg 90-Deg
Spacing Criteria: 1.2 1.4
Shielding Angles: 90 90

COEFFICIENTS OF UTILIZATION - ZONAL CAVITY METHOD. EFFECTIVE FLOOR CAVITY REFLECTANCE 0.20

| RC | 80 | 50 | 30 | 10 | 50 | 30 | 10 |
|----|----|----|----|----|----|----|----|
| 1 | 74 | 69 | 65 | 63 | 62 | 60 | 59 |
| 2 | 68 | 63 | 58 | 55 | 52 | 50 | 50 |
| 3 | 63 | 56 | 51 | 48 | 44 | 43 | 43 |
| 4 | 58 | 50 | 44 | 42 | 38 | 37 | 37 |
| 5 | 53 | 45 | 39 | 37 | 33 | 32 | 32 |
| 6 | 49 | 40 | 35 | 33 | 29 | 28 | 28 |
| 7 | 46 | 37 | 31 | 30 | 26 | 25 | 25 |
| 8 | 43 | 34 | 28 | 27 | 24 | 23 | 23 |
| 9 | 40 | 31 | 25 | 25 | 21 | 20 | 20 |
| 10 | 37 | 29 | 23 | 22 | 19 | 18 | 18 |

LUMINANCE DATA IN CANDELA/SQ. METER

| AVERAGE IN DEG. | AVERAGE 0-DEG. | AVERAGE 45-DEG. | AVERAGE 90-DEG. |
|-----------------|----------------|-----------------|-----------------|
| 45 | 4751. | 5496. | 5487. |
| 55 | 3037. | 3833. | 3481. |
| 65 | 2497. | 2526. | 2585. |
| 75 | 2228. | 2063. | 2403. |
| 85 | 1714. | 1826. | 2098. |

CANDELA DISTRIBUTION

| | 0.0 | 45.0 | 90.0 | FLUX |
|-----|------|------|------|------|
| 0 | 1380 | 1380 | 1380 | |
| 5 | 1373 | 1376 | 1378 | 131 |
| 15 | 1321 | 1345 | 1364 | 380 |
| 25 | 1218 | 1282 | 1327 | 589 |
| 35 | 1058 | 1168 | 1216 | 721 |
| 45 | 800 | 949 | 971 | 700 |
| 55 | 427 | 558 | 524 | 468 |
| 65 | 271 | 288 | 309 | 282 |
| 75 | 163 | 163 | 204 | 177 |
| 85 | 61 | 76 | 100 | 83 |
| 90 | 28 | 39 | 65 | |
| 95 | 30 | 38 | 69 | 50 |
| 105 | 44 | 48 | 95 | 64 |
| 115 | 37 | 63 | 64 | 55 |
| 125 | 26 | 40 | 45 | 35 |
| 135 | 22 | 36 | 38 | 26 |
| 145 | 17 | 29 | 32 | 17 |
| 155 | 13 | 21 | 24 | 9 |
| 165 | 10 | 13 | 15 | 4 |
| 175 | 7 | 8 | 8 | 1 |
| 180 | 7 | 7 | 7 | |

ZONAL LUMEN SUMMARY

| ZONE | LUMENS | % LAMP | % FIXT |
|--------|--------|--------|--------|
| 0- 30 | 1100 | 20.0 | 29.0 |
| 0- 40 | 1821 | 33.1 | 48.0 |
| 0- 60 | 2989 | 54.4 | 78.8 |
| 0- 90 | 3532 | 64.2 | 93.1 |
| 90-120 | 170 | 3.1 | 4.5 |
| 90-130 | 205 | 3.7 | 5.4 |
| 90-150 | 249 | 4.5 | 6.6 |
| 90-180 | 263 | 4.8 | 6.9 |
| 0-180 | 3795 | 69.0 | 100.0 |

Model No. WB2B2FTUNVIB

LER = FP - 58.7 IW - 69.6 BF - 0.90
Comparative yearly lighting energy cost per 1000 lumens = \$4.09

Report Number: G2007068
Lamp: (2) TT5 40W
Luminaire: Dominaire II WB with clear prismatic lens
Ballast: C240PUNVHP-B (Triad)
Report is based on 3150 Lumens per lamp.
Efficiency: 72.1%
CIE Type - Direct
Plane: 0-Deg 90-Deg
Spacing Criteria: 1.2 1.4
Shielding Angles: 90 90

COEFFICIENTS OF UTILIZATION - ZONAL CAVITY METHOD. EFFECTIVE FLOOR CAVITY REFLECTANCE 0.20

| RC | 80 | 50 | 30 | 10 | 50 | 30 | 10 |
|----|----|----|----|----|----|----|----|
| 1 | 75 | 72 | 69 | 67 | 65 | 64 | 62 |
| 2 | 72 | 66 | 62 | 61 | 58 | 55 | 53 |
| 3 | 66 | 59 | 53 | 55 | 50 | 47 | 46 |
| 4 | 61 | 53 | 47 | 49 | 44 | 41 | 40 |
| 5 | 56 | 47 | 41 | 44 | 39 | 36 | 35 |
| 6 | 52 | 43 | 37 | 40 | 35 | 31 | 31 |
| 7 | 48 | 39 | 33 | 37 | 32 | 28 | 28 |
| 8 | 45 | 36 | 30 | 34 | 29 | 25 | 25 |
| 9 | 42 | 33 | 27 | 31 | 26 | 23 | 22 |
| 10 | 39 | 30 | 25 | 29 | 24 | 21 | 20 |

LUMINANCE DATA IN CANDELA/SQ. METER

| AVERAGE IN DEG. | AVERAGE 0-DEG. | AVERAGE 45-DEG. | AVERAGE 90-DEG. |
|-----------------|----------------|-----------------|-----------------|
| 45 | 5649. | 6348. | 5770. |
| 55 | 3682. | 4075. | 3395. |
| 65 | 2931. | 2752. | 2504. |
| 75 | 2547. | 2261. | 2403. |
| 85 | 1931. | 1906. | 2002. |

CANDELA DISTRIBUTION

| | 0.0 | 45.0 | 90.0 | FLUX |
|-----|------|------|------|------|
| 0 | 1664 | 1664 | 1664 | |
| 5 | 1652 | 1663 | 1667 | 159 |
| 15 | 1596 | 1645 | 1685 | 465 |
| 25 | 1480 | 1607 | 1694 | 738 |
| 35 | 1296 | 1508 | 1550 | 914 |
| 45 | 986 | 1141 | 1067 | 832 |
| 55 | 538 | 620 | 537 | 525 |
| 65 | 332 | 330 | 317 | 318 |
| 75 | 196 | 190 | 219 | 203 |
| 85 | 74 | 87 | 106 | 94 |
| 90 | 38 | 46 | 71 | |
| 95 | 43 | 46 | 79 | 61 |
| 105 | 61 | 61 | 97 | 75 |
| 115 | 41 | 64 | 48 | 54 |
| 125 | 31 | 43 | 43 | 37 |
| 135 | 29 | 40 | 40 | 30 |
| 145 | 23 | 34 | 35 | 20 |
| 155 | 18 | 26 | 28 | 12 |
| 165 | 13 | 16 | 20 | 5 |
| 175 | 10 | 11 | 11 | 1 |
| 180 | 9 | 9 | 9 | |

ZONAL LUMEN SUMMARY

| ZONE | LUMENS | % LAMP | % FIXT |
|--------|--------|--------|--------|
| 0- 30 | 1361 | 21.6 | 30.0 |
| 0- 40 | 2275 | 36.1 | 50.1 |
| 0- 60 | 3633 | 57.7 | 80.0 |
| 0- 90 | 4248 | 67.4 | 93.5 |
| 90-120 | 190 | 3.0 | 4.2 |
| 90-130 | 227 | 3.6 | 5.0 |
| 90-150 | 276 | 4.4 | 6.1 |
| 90-180 | 294 | 4.7 | 6.5 |
| 0-180 | 4542 | 72.1 | 100.0 |

Ordering Information

Explanation of Catalog Number. Example: WB2B417UNVHI

| | | | | | | | |
|---|----------------------------------|--------------------------------|---|--|-------------------------|---|---|
| WB | 2 | B | | | UNV | | |
| DOMINAIRE II: White Surface Wrap Fluorescent with White Body | Fixture Length: 2 = 2' Length | Fixture Width: B = 14" Wide | Lamp Quantity 4 = 4 Lamp T8 2 = 2 Lamp TT5 | Lamp: (By Others) 17 = T8 17W FT = TT5 40W (Nominal 24") | Voltage: UNV=120-277 | Options: Add appropriate suffix to catalog no., ie: (GLR) Consult factory for additional options | Ballast Type: <10THD HI † H4 † IB † |
| | | | | | | | 2 - 2 Lamp Elec. T8 (17 Watt) 1 - 4 Lamp Elec. T8 (17 Watt) 2 Lamp Elec. TT5 (40 Watt) †Instant Start (UNV) |

Options/Accessories

Electrical Wiring Options: Consult factory for Emergency pack and dimming options.

Fusing: Internal fast blow fusing: SUFFIX: **GLR**.
Internal slow blow fusing: SUFFIX: **GMF**.

Specifications

Performance: In an installation of 4 lamp 17W luminaires in a room cavity ratio of 1, with reflectance 80% ceiling, 50% wall, 20% floor, the C.U. shall not be less than .71. To reduce glare the average brightness at 65° shall not exceed 2585 candelas per square meter. To control veiling reflections, luminaire output in the 30°-90° zone shall not be less than 64.1%.

Materials: Chassis parts are die-formed code gauge cold rolled steel.

Finish: Chassis exterior – baked white polyester enamel. Cavity – baked white polyester enamel. Rust preventive undercoating.

Lens: One-piece extruded virgin acrylic prismatic bottom and side walls.

Specifications (continued)

End Caps: Injection molded catadioptric end caps separate from lens.

Electrical: Thermally protected class "P" ballast C.B.M. approved, non PCB. If K.O. is within 3" of ballast, use wire suitable for at least 90°.

Labels: I.B.E.W./UL and ULc Listed.

This product may have a mercury containing lamp. Manage in accord with Disposal Laws. See: www.lamprecycle.org

| Job Information | Type: |
|-----------------|-------|
|-----------------|-------|

Lightolier a Genlyte company www.lightolier.com
Technical Information: (978) 657-7600 • Fax (978) 658-0595
631 Airport Road, Fall River, MA 02720 • (508) 679-8131 • Fax (508) 674-4710
We reserve the right to change details of design, materials and finish.

© 2007 a Genlyte company Section 3A/Folio H90-15

Free Manuals Download Website

<http://myh66.com>

<http://usermanuals.us>

<http://www.somanuals.com>

<http://www.4manuals.cc>

<http://www.manual-lib.com>

<http://www.404manual.com>

<http://www.luxmanual.com>

<http://aubethermostatmanual.com>

Golf course search by state

<http://golfingnear.com>

Email search by domain

<http://emailbydomain.com>

Auto manuals search

<http://auto.somanuals.com>

TV manuals search

<http://tv.somanuals.com>