

# KW Industrial SL Solid Top Fluorescent **KW SERIES SL**

Page 1 of 2

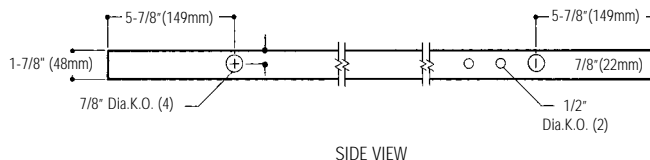
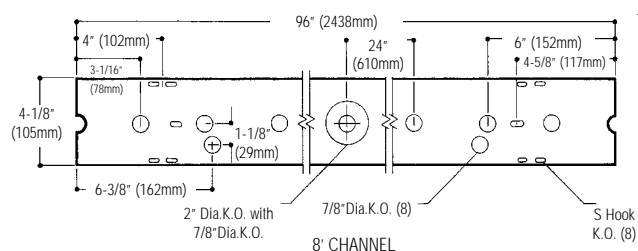
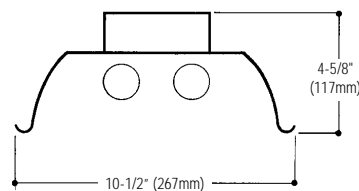
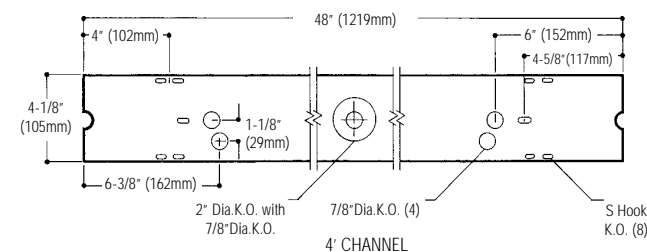
4-1/8" Wide x 48" or 96" Lengths, Solid Top, 2 Lamp T8 or T12 Slimline

## Features

- Reflectors are embossed for rigidity.
- Reflector sides are turned up for rigidity and safe handling.
- Solid top reflector, standard.
- 10% aperture reflector, optional.
- Reflectors easily installed with quarter turn fasteners. No tools required.
- 4-1/8" wide heavy duty channel of code gauge die-formed steel.
- Combination end cap/coupler requires no tools for installation.
- Suitable for individual or row mounting.
- Fully enclosed wiring.
- Multiple knockouts for convenient installation.
- Optional hangers, wire guards and aligners.
- Optional heavy duty coupling.



## Dimensions



### Job Information

### Type:

**Job Name:**

**Cat. No.:**

**Lamp(s):**

**Volts/Ballast:**

Lightolier a Genlyte Thomas Company

www.lightolier.com

Technical Information: (978) 657-7600 • Fax (978) 658-0595

631 Airport Road, Fall River, MA 02720 • (508) 679-8131 • Fax (508) 674-4710

We reserve the right to change details of design, materials and finish.

Copyright 2002 Lightolier

Section 7/Folio Q70-50



# KW Industrial SL Solid Top Fluorescent KW SERIES SL

### Photometry

Report No: G42322  
 Catalog No:  
 KW8S296SL120LE  
 Lamp Type: 2F96SL  
 Lumens Per Lamp: 5500  
 Total Efficiency: 90.2%  
 CIE Type: Direct  
 Spacing Criteria: 1.5  
 Shielding Angle: 180

Model No. KW8S296SL120LE

LER = FI - 69.1 IW - 126 BF - 0.88  
 Comparative yearly lighting energy cost per 1000 lumens = \$3.48

#### coefficients of utilization- zonal cavity method

RC	20			50			30			
	70	50	30	50	30	10	50	30	10	
RW	70	50	30	50	30	10	50	30	10	
room cavity method	1	97	92	88	85	82	80	81	79	77
	2	87	79	73	74	69	64	70	66	62
	3	79	69	61	64	58	53	61	56	51
	4	72	60	52	56	50	44	54	48	43
	5	66	54	45	50	43	38	48	42	37
	6	60	48	39	45	38	32	43	37	32
	7	56	43	35	41	34	28	39	33	28
	8	52	39	31	37	30	25	35	29	25
	9	48	36	28	34	27	22	33	27	22
	10	45	33	26	31	25	20	30	24	20

### Ordering Information

Explanation of Catalog Number. Example: KW8S296SL120LEGLR

**KW**

STANDARD INDUSTRIAL:  
 4-1/8" Wide:  
 Channel

[ ]

FIXTURE LENGTH:  
 4=48"  
 8=96"

[ ]

REFLECTOR:  
 S=Solid Top  
 A=10% Uplight

**2**

NUMBER OF LAMPS IN WIDTH:  
 (By Others)  
 2 Lamp Only

[ ]

LAMP WATTS:  
 48SL=38w T12 Slimline (4' Length)  
 59SL=59w T8 Slimline (8' Length)  
 96SL=75w T12 Slimline (8' Length)

[ ]

VOLTAGE:  
 120 or 277

[ ]

BALLAST TYPE:  
 LE

1-2 Lamp Mag. T12 (Energy Savings)  
 1-2 Lamp Standard Electro Magnetic T12 P  
 <20THD <10THD  
 SO\* HI\*

\*Instant Start Standard

[ ]

OPTIONS:  
 Add appropriate suffix to catalog no. ie: (GLR)



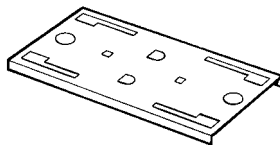
STEM AND CANOPY SET  
 ASC6 CSP (6")



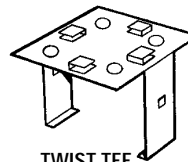
CANOPY SPACER  
 AC1 CSP



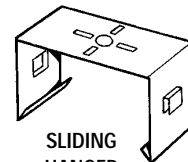
CHAIN HANGING KIT  
 AH5 CSP



HEAVY DUTY COUPLER  
 NHDC-W CSP



TWIST TEE  
 NAH3 CSP



SLIDING HANGER KIT  
 NAHW CSP

### Options & Accessories

**Fusing:** Internal fast-blow fusing. Suffix: **GLR**.  
 Internal slow-blow fusing. Suffix: **GMF**.

**Fluorescent Emergency Lighting System:** Factory installed emergency power battery pack with charger and inverter. Suffix: **EM**.

**Stem and Canopy Sets:** Suspends fixture 6", 12", 18" or 24" from surface. Catalog Number: **ASC6 CSP (6")**, **ASC12 CSP (12")**, **ASC18 CSP (18")**, **ASC24 CSP (24")**.

**Canopy Spacer:** Suspends fixture 1-1/2" from surface. Order Catalog Number: **AS1 CSP**

**4' Wire Guard (White):** Specify two for 96" fixtures. Catalog Number: **AWG4W CSP**

**Reflector Row Aligners:** Two aligners are included with all 96" fixtures. For continuous row installations, specify two additional bulk-packed aligners per reflector joint. Catalog Number: **KNA**.

**Chain Hanging Kit:** Includes two 5' heavy duty link chains with sturdy "V" hooks for fixture suspension. **AH5 CSP**

**Twist Tee:** For exposed T-bar mounting, 1-7/8" deep channel. **NAH3 CSP**  
**Heavy Duty Coupler:** Catalog Number: **NHDC-W CSP**

### Specifications

**Materials:** Chassis parts are die-formed heavy gauge cold rolled steel, 4-1/8" channel width.

### Specifications (continued)

**Reflector:** Heavy duty die-formed with deep lateral embossments and return edges for additional stability and uniformity and two quick release quarter turn fasteners for attachment to housing.

**Ballast Cover:** Code gauge steel secured with quarter turn latch.

**Finish:** Chassis exterior—phosphate undercoating, baked white polyester enamel.

**Electrical:** Thermally protected class "P" ballast C.B.M. approved, non PCB. If K.O. is within 3" of ballast, use wire suitable for at least 90°.

**Labels:** I.B.E.W./UL and C-UL.

### Job Information

Type:

Lightolier a Genlyte Thomas Company

www.lightolier.com

Technical Information: (978) 657-7600 • Fax (978) 658-0595

631 Airport Road, Fall River, MA 02720 • (508) 679-8131 • Fax (508) 674-4710

We reserve the right to change details of design, materials and finish.

Copyright 2002 Lightolier

Section 7/Folio Q70-50

## Free Manuals Download Website

<http://myh66.com>

<http://usermanuals.us>

<http://www.somanuals.com>

<http://www.4manuals.cc>

<http://www.manual-lib.com>

<http://www.404manual.com>

<http://www.luxmanual.com>

<http://aubethermostatmanual.com>

Golf course search by state

<http://golfingnear.com>

Email search by domain

<http://emailbydomain.com>

Auto manuals search

<http://auto.somanuals.com>

TV manuals search

<http://tv.somanuals.com>