

# QVS2GPTOS2FT

2 x 40W

## ALTER METALYTE

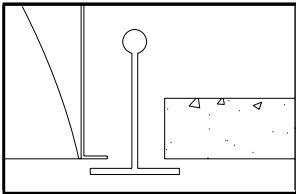
2' X 2' RECESSED DIRECT/INDIRECT FLUORESCENT  
2 LAMP, TT5 BI-TUBE, 5 1/2" DEEP  
MICROPERFORATED MESH LAMP SHIELD  
STATIC

- Efficiency 40.7%.
- Semi-specular aluminum reflectors with lengthwise ridges.
- Swing down microperforated lamp shield for easy relamping and maintenance.
- Alter soft white film on inside of mesh conceals lamp image providing balance between reflected and direct light.
- Fully recessed luminaire and lamp compartment.
- Specular interior reflector.
- One piece body for easy installation.
- Exclusive socket locks lamp into place.
- Easy access to ballast through lamp compartment.
- Fits standard T-Grid ceilings.
- Optional acrylic drop-down visual element.

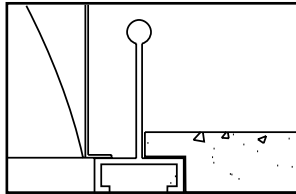


### MOUNTING METHODS/FEATURES

#### Ceiling compatibility

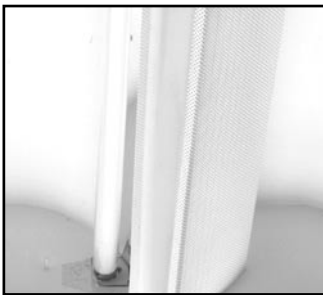


Suited to standard exposed T-grid ceilings

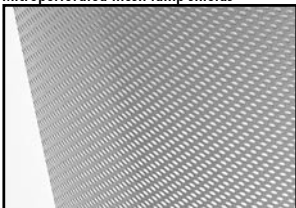


Suited to standard exposed Slot T-grid ceilings

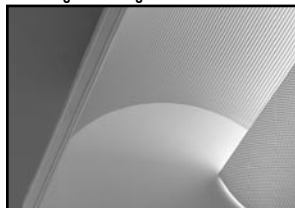
#### Swing down optical system for easy relamping and maintenance



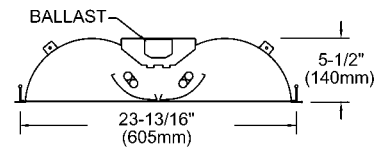
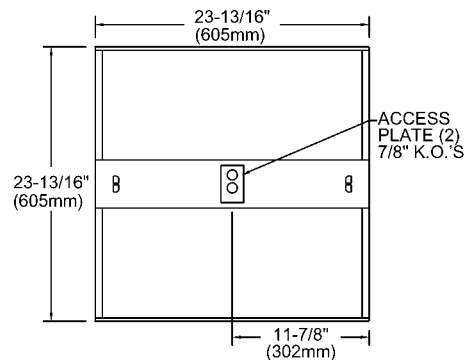
#### Microperforated mesh lamp shields



#### Sem-specular aluminum reflector with lengthwise ridges



### DIMENSIONS



FIXTURE TYPE

VOLTS

JOB INFORMATION:

# QVS2GPTOS2FT

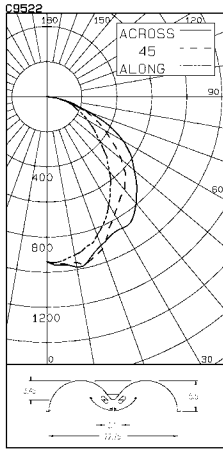
# ALTER METALYTE 2' X 2' RECESSED DIRECT/INDIRECT FLUORESCENT

CERTIFIED TEST REPORT NO. LSC9522  
COMPUTED BY LSC PROGRAM \*\*TEST-LITE\*\*

LIGHTOLIER-CFI ALTER 2x2 LUMINAIRE CAT. NO. QVS2GPTOS2FT120SB  
WITH MICRO-PERFORATED DOORS AND ALUMINUM RIBBED REFLECTORS  
TWO 40W BIAx COMPACT FLUORESCENT LAMPS. LUMEN RATING = 3150 LMS.  
UNIVERSAL TRIAD 120V 1 OR 2-LAMP ELECTRONIC BALLAST NO. C240S1120RH

LIGHTING SCIENCES CANADA LTD.  
440 PHILLIP ST., UNIT 19  
WATERLOO, ONTARIO

CERTIFIED TEST REPORT NO. LSC9522  
COMPUTED BY LSC PROGRAM \*\*TEST-LITE\*\*



CANDLEPOWER SUMMARY		OUTPUT LUMENS	
ANGLE	ALONG	45	ACROSS
0	939	939	939
5	941	950	954
10	916	946	959
15	882	929	964
20	840	880	923
25	782	841	836
30	709	768	773
35	632	698	722
40	557	591	691
45	483	515	639
50	398	438	554
55	330	373	464
60	270	314	384
65	240	240	302
70	167	187	233
75	121	123	130
80	75	61	62
85	22	14	13
90	0	0	0

LIGHTOLIER-CFI ALTER 2x2 LUMINAIRE CAT. NO. QVS2GPTOS2FT120SB  
WITH MICRO-PERFORATED DOORS AND ALUMINUM RIBBED REFLECTORS  
TWO 40W BIAx COMPACT FLUORESCENT LAMPS. LUMEN RATING = 3150 LMS.  
UNIVERSAL TRIAD 120V 1 OR 2-LAMP ELECTRONIC BALLAST NO. C240S1120RH

### COEFFICIENTS OF UTILIZATION

#### ZONAL CAVITY METHOD

EFFECTIVE FLOOR CAVITY REFLECTANCE = .20

CC WALL	80		70		50		30		10		0	
	70	50	30	10	70	50	30	10	50	30	10	0
RCR	0	.48	.48	.48	.48	.47	.47	.47	.47	.45	.45	.45
	1	.45	.43	.42	.40	.44	.42	.41	.40	.40	.39	.38
	2	.41	.38	.36	.34	.40	.38	.35	.33	.36	.34	.33
	3	.36	.34	.31	.29	.37	.33	.31	.28	.32	.30	.28
	4	.35	.31	.27	.25	.34	.30	.27	.25	.29	.26	.24
	5	.32	.27	.24	.21	.31	.27	.24	.21	.26	.23	.21
	6	.30	.25	.21	.19	.29	.24	.21	.19	.23	.21	.18
	7	.27	.22	.19	.16	.27	.22	.18	.16	.21	.18	.16
	8	.25	.20	.17	.14	.25	.20	.17	.14	.19	.16	.14
	9	.24	.18	.15	.13	.23	.18	.15	.13	.17	.14	.12
	10	.22	.17	.13	.11	.21	.16	.13	.11	.16	.13	.11

### ZONAL LUMENS AND PERCENTAGES

ZONE	LUMENS	% LAMP	% LUMINAIRE
0-30	744	11.81	29.01
0-40	1208	19.19	47.11
0-60	2091	33.20	81.51
0-90	2565	40.73	100.00
40-90	1357	21.54	52.89
60-90	474	7.53	18.49
90-180	0	.00	.00
0-180	2565	40.73	100.00

\*\* EFFICIENCY = 40.7% \*\*

### LUMINANCE SUMMARY-CD. / SQ. M.

S/M/H = 1.4  
SC(ALONG) = 1.1, SC(ACROSS) = 1.4

ANGLE	ALONG	45	ACROSS
45	2021	2686	3056
55	1702	2406	3040
65	1495	2124	2751
75	1379	1451	1841
85	752	448	984

CERTIFIED BY: DATE: NOV 14, 2002

PREPARED FOR: LIGHTOLIER-CFI  
CORNWALL, ONTARIO

TESTED ACCORDING TO IES PROCEDURES. TEST DISTANCE EXCEEDS FIVE TIMES THE GREATEST LUMINOUS OPENING OF LUMINAIRE.

DETERMINED IN ACCORDANCE WITH CURRENT IES PUBLISHED PROCEDURES  
LUMINAIRE INPUT WATTS = 65.0  
LABORATORY RESULT MAY NOT BE REPRESENTATIVE OF FIELD PERFORMANCE.  
BALLAST FACTORS HAVE NOT BEEN APPLIED.

## ORDERING INFORMATION Explanation of Catalogue Number Example: QVS2GPTOS2FT120SB

<b>QVS</b>	<b>2</b>	<b>G</b>	<b>PT</b>	<b>OS</b>	<b>2</b>	<b>FT</b>	<b>120</b>	<b>SB</b>	
QUALITY VISUAL STATIC Recessed direct indirect soft light optical system	FIXTURE WIDTH 2'	CEILING TYPE Standard exposed T-grid ceilings	LAMP SHIELD PT= Metallic Reflector / Microperforated Mesh lamp shield	CLEAR POLISHED ACRYLIC DROP DOWN VISUAL ELEMENT OS = Open slot (no acrylic) OP = One Piece (no center slot) GC = Clear acrylic GG = Clear acrylic / Green projected color face GB = Clear acrylic / Blue projected color face GR = Clear acrylic / Red projected color face	LAMP QUANTITY	LAMP/FIXTURE LENGTH (NOMINAL 24") FT = TT5 Bi-tube	VOLTAGE 120, 277 347	BALLAST SB: 40W TT5 Elect. BE: 50W TT5 Elect. BD: 55W TT5 Elect. PB: 40W TT5 PowerSpec HDF Dimming † DA: iGEN DALI †	OPTIONS R = Radio Interface Filter O = Emergency Lighting System (for Canada) N = Emergency Lighting System (for U.S.)

† Not available in 347V.

### SPECIFICATIONS

**MATERIALS:** One piece chassis constructed from die formed 20 gauge cold rolled steel. **Optic** - Semi-specular matte aluminum reflector with lengthwise ridges. Soft white acrylic film on inside of lamp shield conceals lamp image.

**FINISH:** Chassis exterior - phosphate undercoating, baked white acrylic matte paint finish.

**ELECTRICAL:** Rapid start HPF, thermally protected class "P" ballast (Bi-tube type). If K.O.s are within 3" of ballast use wire suitable for at least 90C.

**LABELS:** Listed by CSA, UL

We reserve the right to change, materials and finish in any way that will not alter installed appearance or reduce function and performance.

Genlyte Thomas Company

Download from [www.Somanuals.com](http://www.Somanuals.com). All Manuals Search And Download.

631 Airport Road, Fall River, MA 02720 - Tel. (508) 679-8131

C.F.I. Division of Canlyte, Inc.

525 Education Road, Cornwall, Ontario

Canada K6H 6C7 - (613) 938-6221

## Free Manuals Download Website

<http://myh66.com>

<http://usermanuals.us>

<http://www.somanuals.com>

<http://www.4manuals.cc>

<http://www.manual-lib.com>

<http://www.404manual.com>

<http://www.luxmanual.com>

<http://aubethermostatmanual.com>

Golf course search by state

<http://golfingnear.com>

Email search by domain

<http://emailbydomain.com>

Auto manuals search

<http://auto.somanuals.com>

TV manuals search

<http://tv.somanuals.com>