

LINDY®

COMPUTER CONNECTION TECHNOLOGY

ExpressCard / 34 1 Port Parallel

User Manual

English



LINDY No. 51535

www.lindy.com



System Requirements

Hardware:

Description

- Fully compliant with Express Base Specification
- Compatible for PCI Express Card application requirements.
- PCI-E Multi Function Peripheral Controller with x1 Lane Interface.
- Support four PCI-E functions.

Parallel:

- Port IEEE1284-compliant.

Package Contents

This Express I/O Card package includes the following:

- Hardware installation guide
- Software installation guide
- Express Card
- Driver CD

Please make sure that all of these items are present. If anything is missing, contact your vendor for assistance.

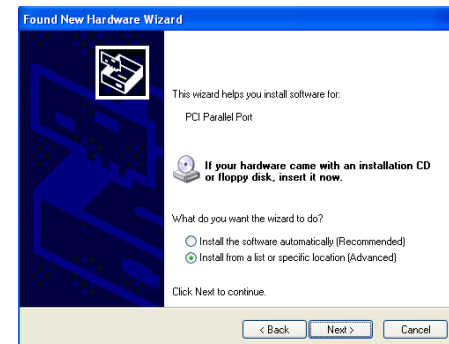
The Super PCI Express I/O Card

Installing the Software Drivers

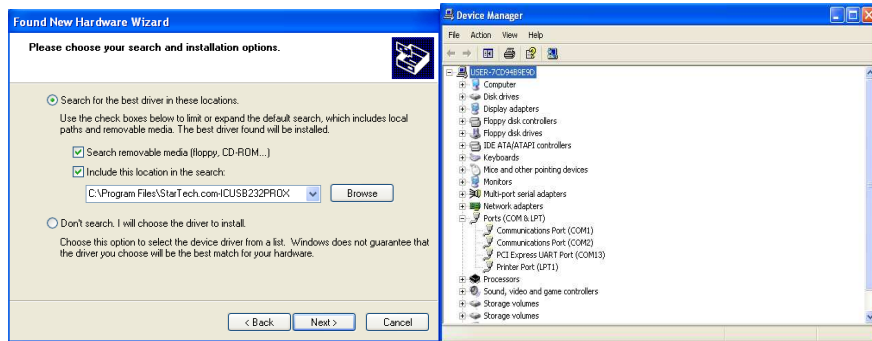
This section provides information on how to install the Super PCI-E I/O drivers for the following operating systems:

Windows 2000 Driver installation

1. At the Add New Hardware Wizard windows®, click on “Next”
2. Select the option “Install from a list or specific location (Advanced)” and click on “Next”



3. Select the option “**Search for the best driver in these locations.**” and click on “**Next**”



4. Click “**Next**” and then “**Finish**” respectively.

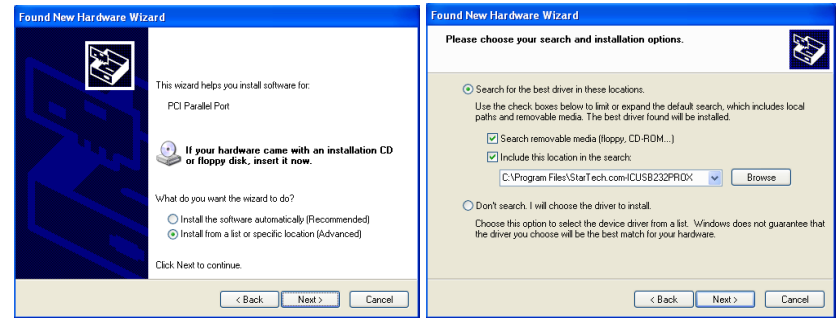
5. Remove the diskette, then select “**Yes**” to restart the computer for the setup to take effect.

To verify successful installation in Windows® 2000:

1. From the main desktop, click on **My Computer**, then double-click on **Control Panel, System, and Device Manager**.
1. Double-click on either **Ports (COM & LPT)** or **Serial port** device options. **PCI I/O Board** should be displayed when successfully installed. The port is ready to connect new device.

Windows XP Driver installation :

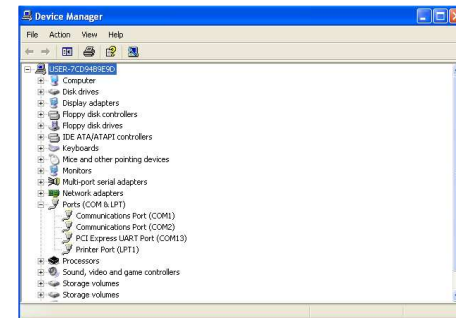
1. At the Add New Hardware Wizard windows®, click on “**Next**”
2. Select the option “**Install from a list or specific location (Advanced)**” and click on “**Next**”



3. Select the option “**Search for the best driver in these locations.**” and click on “**Next**”

4. Click “**Next**” and then “**Finish**” respectively..

5. Remove the diskette, then select “**Yes**” to restart the computer for the setup to take effect.

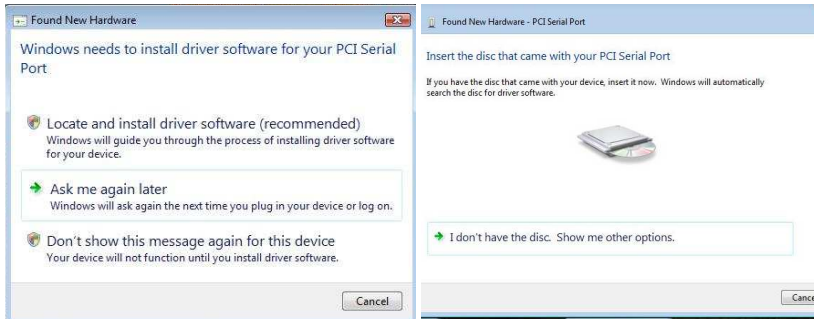


To verify successful installation in Windows® XP:

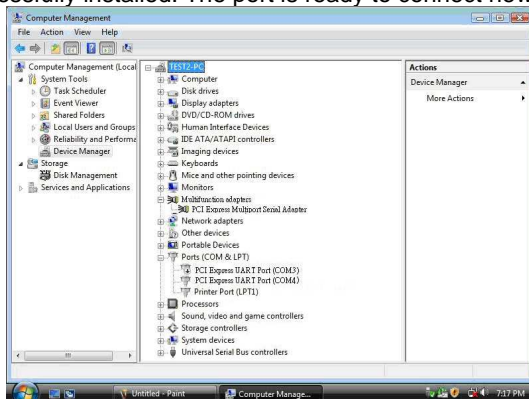
1. From the main desktop, click on **My Computer**, then double-click on **Control Panel, System, and Device Manager**.
2. Double-click on either **Ports (COM & LPT)** or **Serial port** device options. **PCI I/O Board** should be displayed when successfully installed. The port is ready to connect new device.

Windows VISTA Driver installation:

1. Start power to RUN VISTA
2. CD drive to CD-ROM
3. Click on “**Locate and install driver software (recommended)**”.



4. Install the disc that came with your PCI Serial Port and then **"Next"**
5. Windows encountered a problem installing the driver software for your device and then **"close"** (**Disk D: \UART(CD-ROM)**)
6. Install the disc that came with your 16C95x Serial Port and then **"Next"**
7. Windows encountered a problem installing the driver software for your device and then **"close"**
8. Click the **"Device Manager"** click on **"Device Manager"** to either **Ports (COM & LPT)** device options. **16C95x Serial Port** should be displayed when successfully installed. The port is ready to connect new device.



Certifications

FCC Certifications

This equipment has been tested and found to comply with the limits for a Class A digital device, pursuant to part 15 of the FCC Rules. These limits are designed to provide reasonable protection against harmful interference when the equipment is operated in a commercial environment. This equipment generates, uses, and can radiate radio frequency energy and, if not installed and used in accordance with the instruction manual, may cause harmful interference to radio communications. Operation of this equipment in a residential area is likely to cause harmful interference in which case the user will be required to correct the interference at their own expense.

This device complies with Part 15 of the FCC Rules. Operation is subject to the following two conditions: (1) this device may not cause harmful interference, and (2) this device must accept any interference received; including interference that may cause undesired operation.

CE Certification

This equipment complies with the requirements relating to electromagnetic compatibility, EN 55024 and EN55022 class A for ITE, EN61000-3-2/-3 the essential protection requirement of Council Directive 89/336/EEC on the approximation of the laws of the Member States relating to electromagnetic compatibility.

Recycling Information



WEEE (Waste of Electrical and Electronic Equipment),
Recycling of Electronic Products

United Kingdom

In 2006 the European Union introduced regulations (WEEE) for the collection and recycling of all waste electrical and electronic equipment. It is no longer allowable to simply throw away electrical and electronic equipment. Instead, these products must enter the recycling process.

Each individual EU member state has implemented the WEEE regulations into national law in slightly different ways. Please follow your national law when you want to dispose of any electrical or electronic products. More details can be obtained from your national WEEE recycling agency.

Germany / Deutschland

Die Europäische Union hat mit der WEEE Richtlinie umfassende Regelungen für die Verschrottung und das Recycling von Elektro- und Elektronikgeräten geschaffen. Diese wurden von der Bundesregierung im Elektro- und Elektronikgerätegesetz – ElektroG in deutsches Recht umgesetzt. Dieses Gesetz verbietet vom 24. März 2006 an das Entsorgen von entsprechenden, auch alten, Elektro- und Elektronikgeräten über die Hausmülltonne! Diese Geräte müssen den lokalen Sammelsystemen bzw. örtlichen Sammelstellen zugeführt werden! Dort werden sie kostenlos entgegen genommen. Die Kosten für den weiteren Recyclingprozess übernimmt die Gesamtheit der Gerätehersteller.

France

En 2006, l'union Européenne a introduit la nouvelle réglementation (WEEE) pour le recyclage de tout équipement électrique et électronique.

Chaque Etat membre de l' Union Européenne a mis en application la nouvelle réglementation WEEE de manières légèrement différentes. Veuillez suivre le décret d'application correspondant à l'élimination des déchets électriques ou électroniques de votre pays.

Italy

Nel 2006 l'unione europea ha introdotto regolamentazioni (WEEE) per la raccolta e il riciclo di apparecchi elettrici ed elettronici. Non è più consentito semplicemente gettare queste apparecchiature, devono essere riciclate. Ogni stato membro dell' EU ha tramutato le direttive WEEE in leggi statali in varie misure. Fare riferimento alle leggi del proprio Stato quando si dispone di un apparecchio elettrico o elettronico.

Per ulteriori dettagli fare riferimento alla direttiva WEEE sul riciclaggio del proprio Stato.



LINDY No. 51535

www.lindy.com

Free Manuals Download Website

<http://myh66.com>

<http://usermanuals.us>

<http://www.somanuals.com>

<http://www.4manuals.cc>

<http://www.manual-lib.com>

<http://www.404manual.com>

<http://www.luxmanual.com>

<http://aubethermostatmanual.com>

Golf course search by state

<http://golfingnear.com>

Email search by domain

<http://emailbydomain.com>

Auto manuals search

<http://auto.somanuals.com>

TV manuals search

<http://tv.somanuals.com>