

## PCMCIA/CardBus Adapter Card

User Manual

English



LINDY No. 51103



[www.lindy.com](http://www.lindy.com)



For Home and Office Use  
Tested to Comply with FCC Standards

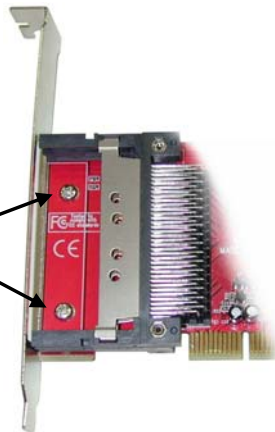
### Hardware Installation

**Important:** Before beginning the installation we recommend you use an anti-static wrist strap to prevent possible damage to the sensitive internal components in your computer.

The card must be installed into a 32 Bit PCI expansion slot in a PC.

For standard desktop/tower PCs the correct back plate is already installed. For low profile PCs you should install the low profile back plate:

Back plate is secured by these two screws.



1. Power down your computer and unplug from the mains.
2. Remove the case cover.
3. Locate an available 32 Bit PCI slot.
4. Remove the slot blanking plate and retain the screw.
5. Carefully insert the card into the PCI slot.
6. Secure the card using the retained screw.
7. Replace the case covers, plug the system back into the mains and switch on.
8. The drivers for the card will be automatically installed by the operating system.\*

\* Windows 98 users may be prompted to insert their Windows CD.

### Introduction

Thank you for purchasing the LINDY PCMCIA/CardBus Adapter. With this "Plug & Play" 32 Bit PCI card you can upgrade your desktop PC to support Notebook style PCMCIA/CardBus cards.

The card features two independent PC Card sockets which both support Type I, II & III PC Cards. This allows you to mix and match 5V/3.3V 16 Bit PCMCIA and 3.3V CardBus Cards. For maximum versatility, the card features both standard and low profile back plates.

### Features

- 32 Bit/33MHz fully compliant PCI-host interface
- Two independent PC Card sockets, compliant with the PC Card standard 7.1
- Supports Type I, Type II and Type III PC Cards
- Can be used with 5V/3.3V 16 Bit PCMCIA & 3.3V CardBus Cards
- Supports hot-plugging and removal of cards
- Supports flash media and smart card PC Card adapters
- Texas Instruments chipset
- "Plug & Play" - no special software to install
- Compatible with Windows 98/ME/2000/XP

### Package Contents

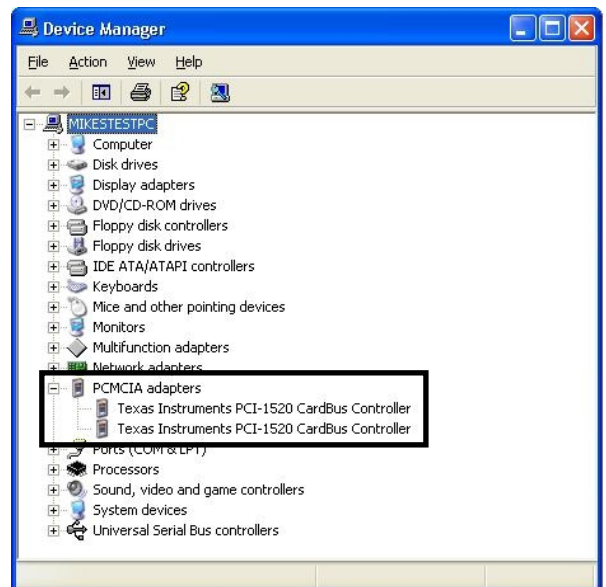
- PCMCIA/CardBus Adapter Card
- Standard and Low Profile back plates
- This manual

### Verifying the installation

To verify correct installation, start Windows **Device Manager**. For example, in XP click:

**Start >Control Panel > System > Hardware >Device Manager**

You should see an entry similar to this:



[www.lindy.com](http://www.lindy.com)

2nd Edition November 2005

## Free Manuals Download Website

<http://myh66.com>

<http://usermanuals.us>

<http://www.somanuals.com>

<http://www.4manuals.cc>

<http://www.manual-lib.com>

<http://www.404manual.com>

<http://www.luxmanual.com>

<http://aubethermostatmanual.com>

Golf course search by state

<http://golfingnear.com>

Email search by domain

<http://emailbydomain.com>

Auto manuals search

<http://auto.somanuals.com>

TV manuals search

<http://tv.somanuals.com>