

LINDY®

CONNECTION PERFECTION

Wireless Projector Server

User Manual

English



LINDY No. 32699



www.LINDY.com

© LINDY ELECTRONICS LIMITED & LINDY-ELEKTRONIK GMBH - FIRST EDITION (FEB 2004)

Table of Contents

| | |
|--|-----------|
| 1. Overview..... | 4 |
| 2. Quick Start..... | 6 |
| 3. Windows Client Utility..... | 9 |
| 3.1 Starting Program..... | 9 |
| 3.2 Login..... | 10 |
| 3.3 Main User Interface..... | 10 |
| 3.4 Screen Projection..... | 11 |
| 3.5 Magnifier Feature..... | 11 |
| 3.6 Video/Music streaming Feature..... | 12 |
| 3.7 Menu Description..... | 13 |
| 3.7.1 Show Login Code..... | 13 |
| 3.7.2 Open Admin Web Page..... | 14 |
| 3.7.3 Searching Server..... | 15 |
| 3.7.4 Magnifier Option..... | 15 |
| 3.7.5 Projection Quality..... | 16 |
| 3.7.6 Projection Source..... | 16 |
| 3.7.7 Connection Profile..... | 17 |
| 3.7.8 Auto WiFi connect..... | 19 |
| 3.7.9 Auto Power Manager..... | 19 |
| 3.7.10 Hide UI..... | 20 |
| 3.7.11 Advanced Screen Capture..... | 20 |
| 3.7.12 Repeat..... | 21 |
| 3.7.13 Make PnS Token..... | 22 |
| 3.7.14 Copy Application to desktop..... | 23 |
| 3.7.15 About..... | 23 |
| 3.7.16 Exit..... | 24 |
| 4. WPS for PDA..... | 25 |
| 5. Mac Client Utility..... | 26 |
| 5.1 Launch Application..... | 26 |
| 5.2 Main User Interface..... | 27 |
| 5.3 Screen Projection..... | 27 |
| 5.4 Video/Music streaming Feature..... | 28 |
| 6. Web Management..... | 29 |
| 6.1 Home Page..... | 29 |
| 6.2 Download Software..... | 30 |
| 6.3 Conference Control..... | 31 |

| | | |
|--------------|--------------------------------------|-----------|
| 6.4 | <i>Login Web Admin</i> | 32 |
| 6.4.1 | <i>System Status</i> | 33 |
| 6.4.2 | <i>Network Setup</i> | 33 |
| 6.4.3 | <i>Projection Setup</i> | 36 |
| 6.4.4 | <i>Change Passwords</i> | 37 |
| 6.4.5 | <i>Reset to Default</i> | 37 |
| 6.4.6 | <i>Firmware Upgrade</i> | 38 |
| 6.4.7 | <i>Reboot System</i> | 39 |
| 6.4.8 | <i>Logout</i> | 40 |

1. Overview

WPS is a must-have device for your meeting room! It turns your existing "wired" projector into a "high-end wireless" projector. With the revolutionary Plug-and-Show, 4-to-1 split screen and PDA wireless projection features, WPS makes every of your presentation and meeting efficient and successful.

■ Plug & Show

With the accompanied Plug & Show USB Token, wireless presentation becomes easy! Just link your PC/Laptop to WPS (through WLAN or Ethernet), plug the token into a USB port, and in seconds, your screen will be wireless projected to the connected projector!

■ 4-to-1 Split Screen Projection

With this 4-to-1 split screen feature, up to four PC screens can be projected to one projector in the same time. Thus you can easily do side-by-side comparison from four PC / PDAs to increase meeting productivity!

■ PDA wireless Projection

You don't have to bring the laptop for business presentation anymore. Just connect your PDA phone to WPS through WiFi, and start your professional and stylish presentation right away!

■ Conference control

WPS supports Conference Control function for easily moderating the conference. The conference moderator can control projection from connected PCs through a web-based control page. So you can streamline your meeting/presentation to be more fluent and in order.

■ Magnifier feature

WPS supports Magnifier feature for codec-free video clips watching experience. By drag and drop the video into magnifier capture region, you will be able to watch the video on big screen with best experience.

- Macintosh(Mac) wireless Projection

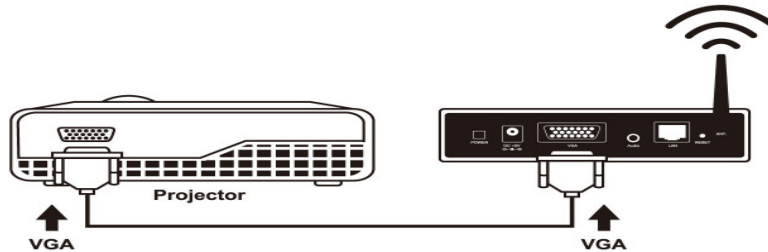
WPS supports Mac client connected and projected wirelessly. By launching the Mac client software that stored in accompanied USB token, WPS provide the same experience to Mac user to utilize the wireless presentation feature.

➤ **Features**

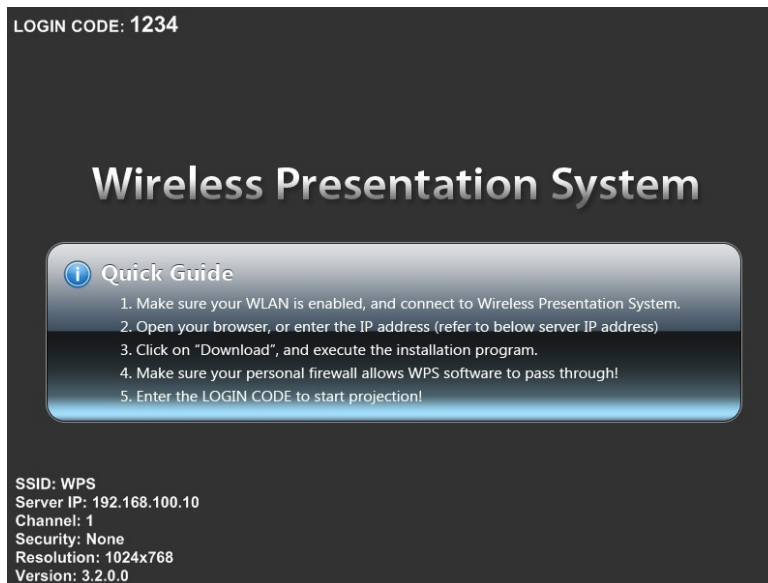
- Support Windows Vista, XP, 2000 and Mobile 5/6
- Support Macintosh(Mac) version 10.4 and above.
- Plug and Show! No installation required ... just plug in the accompanied token to a USB port, and hassle free presentation can be started in seconds.
- 4-to-1 split screen projection! Turn one projector into four, increase meeting productivity right away.
- PDA wireless projection! PC-less stylish presentation becomes possible!
- Conference control! Allow moderators to streamline grand meetings.
- Provide session security login, wireless WEP/WPA key and Gatekeeper function to protect presentation contents and keep good security to office networks.
- Provide magnifier feature to enlarge small video region to playback with full screen.
- Provide media playback feature, support music and video streaming.

2. Quick Start

- 1) Connect projector VGA cable to WPS box VGA connector and turn on projector power.

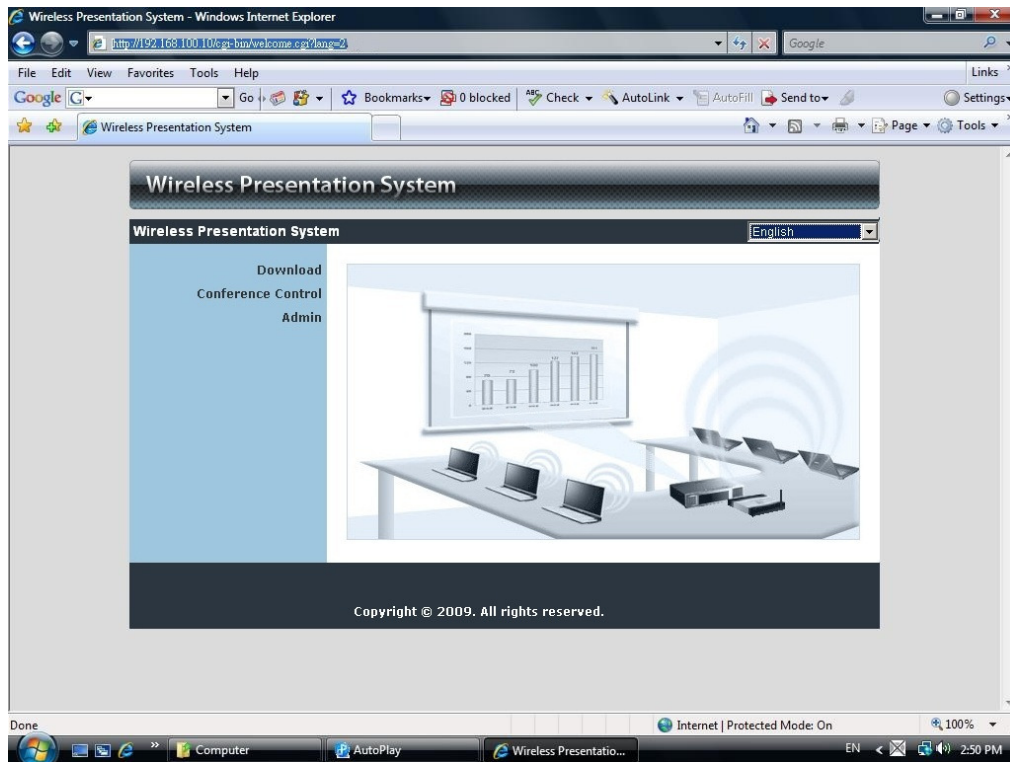


- 2) Turn on WPS box.
 - ◆ When Projector shows the default menu on the screen as below, it indicates the WPS box is ready now.

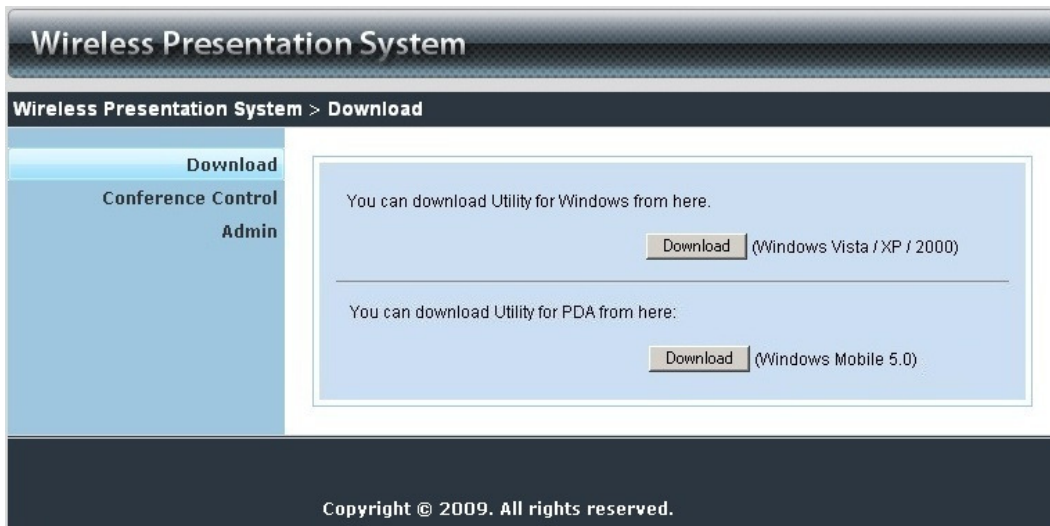


- 3) Make sure your PC WLAN is enabled already, and connect your PC with WPS box.
- 4) Open your browser and it will redirect to WPS main page automatically, or you can enter the IP address to access the WPS web home page.
 - ◆ The default IP address of WPS is **192.168.100.10** or refers to the IP address shown on the left corner of projector screen.

English Manual



- 5) Download the client software. Please select the "Windows Vista / XP/ 2000" or "Windows Mobile 5.0" and execute the installation program.
- ◆ After installing the program, you will see the WPS shortcut on the PC screen.



English Manual



6) Make sure your personal firewall allows WPS software to pass through.

7) Enter the **LOGIN CODE** and

- ◆ You can see the login code on the projector screen



8) Click the **Play** button to start projection!



3.Windows Client Utility

3.1 Starting Program

After you download WPS Windows program via web page successfully, then follow below steps to start.

- 1) Click WPS icon to execute the program.

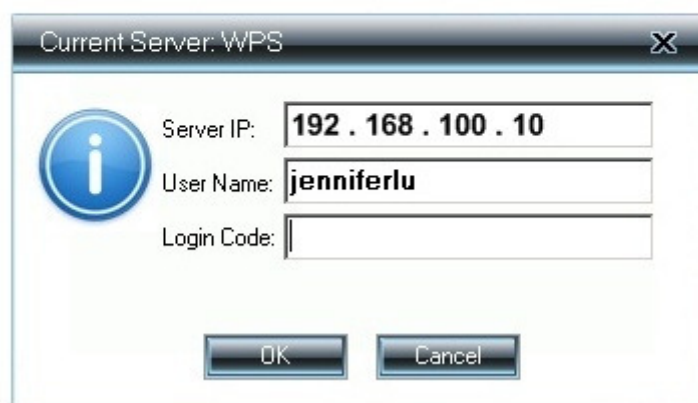


- 2) Program start to search for WPS box automatically,
- 3) If WPS box founded then "**Login Code**" dialog box will be pop up on the PC screen.

- **Searching for WPS box**

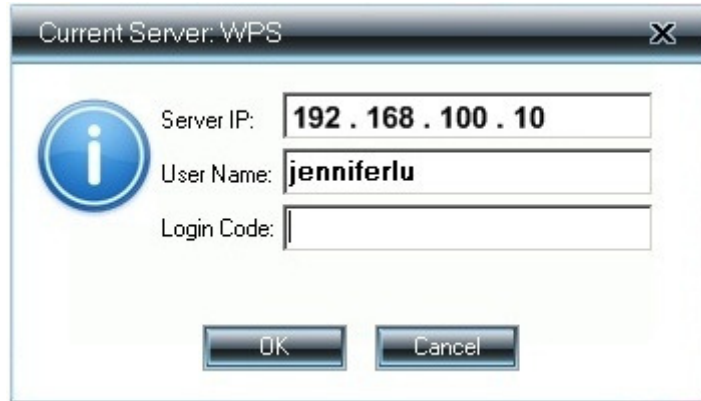


- **WPS box is founded and enter login code to start.**

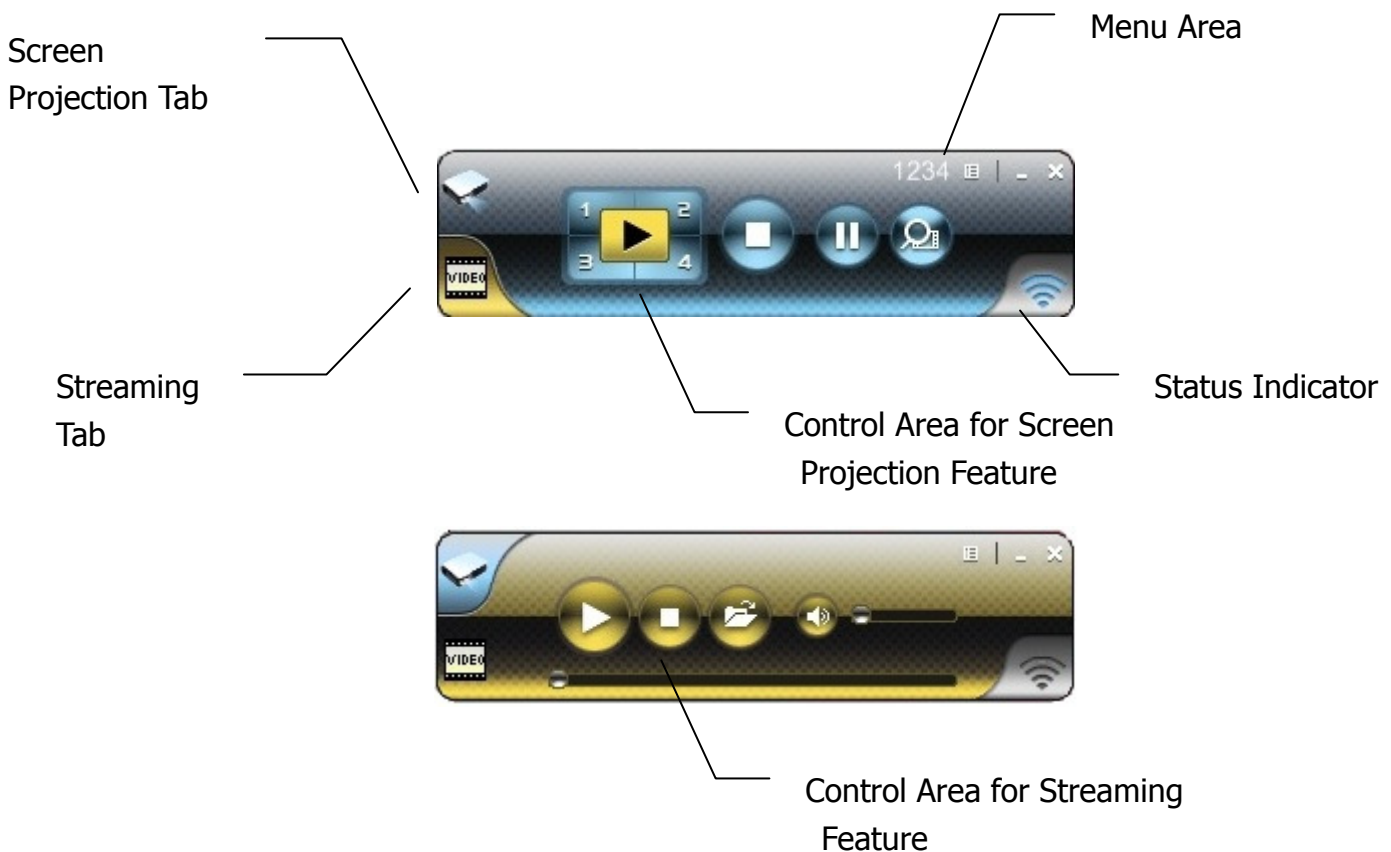


3.2 Login

- 1) After "Login Code" dialog box shown, enter login code to start presentation.
- 2) You can see the login code shown on the projector screen.






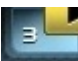



3.3 Main User Interface



3.4 Screen Projection


Click the "Play" button for full or split screen, you can project the main screen on to the display immediately, click the "Pause" button, you can freeze you projection screen, and click the "Stop" button to stop projecting your screen.



| Button | Description |
|---|------------------------|
|  | Full Screen projection |
|  | Project to Split #1 |
|  | Project to Split #2 |
|  | Project to Split #3 |
|  | Project to Split #4 |
|  | Stop projecting |
|  | Pause projecting |

3.5 Magnifier Feature



Click  to enable the magnifier feature. System will enlarge and playback the image within the red rectangle to full screen in higher frame rate.

Ps1. To enable this feature, you need to install Magnifier component first which is stored in the USB token.

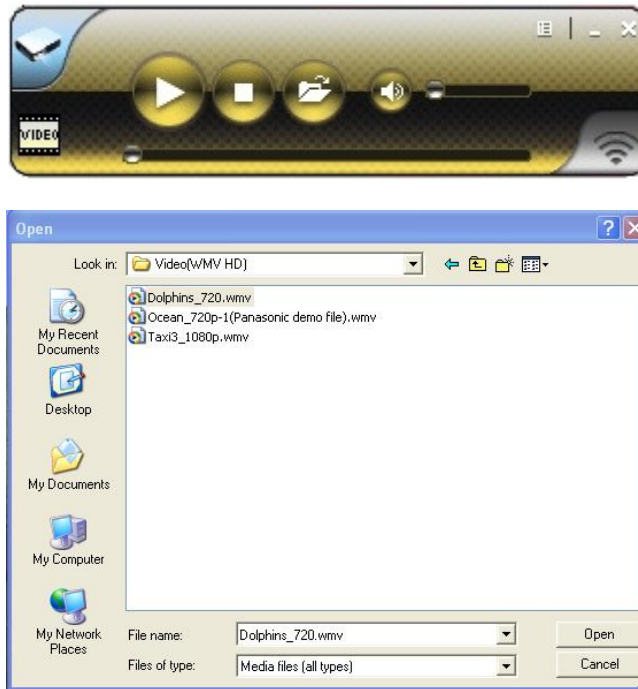
English Manual

Ps2. You need to draw and resize the video size to fit into this rectangle.









3.6 Video/Music streaming Feature

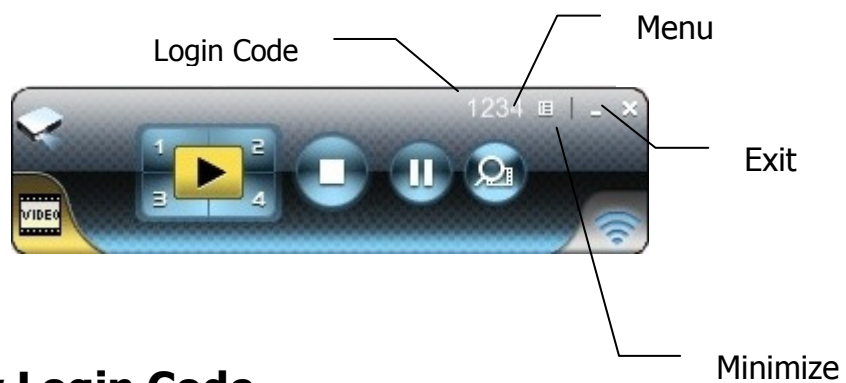
Click the "Video Tab" to switch to Video Mode, choose a video/audio file, then it will stream the original file to playback on the screen.



* Supported Video/Audio Format: MPEG1/2, DivX(3.4.5), XviD(MPEG4), WMV9, MP3, WMA

| Button | Description |
|---|---------------------------|
|  | Start Playing Video/Music |
|  | Stop Playing Video/Music |
|  | Open Video/Music File |
|  | Mute |
|  | Volume Level |
|  | Progress Bar |

3.7 Menu Description




3.7.1 Show Login Code

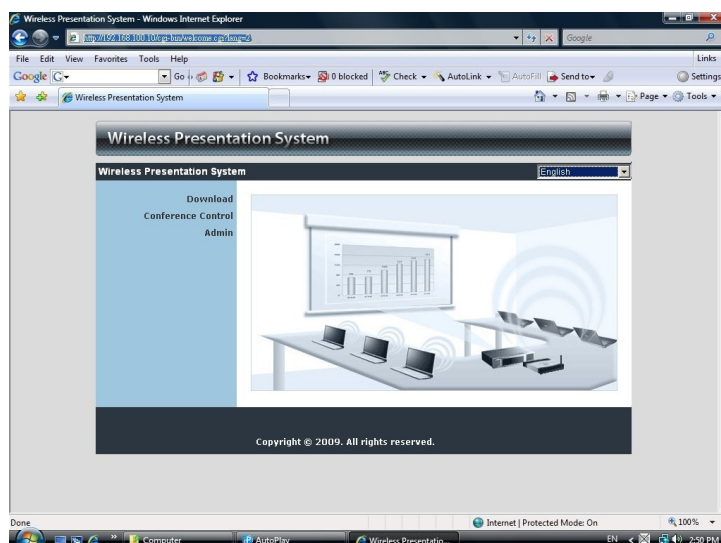
Click "Show Login Code", it will display the login code on the right-upper of desktop and close it automatically after 10 seconds. You can also click on the area to close this window manually.

English Manual



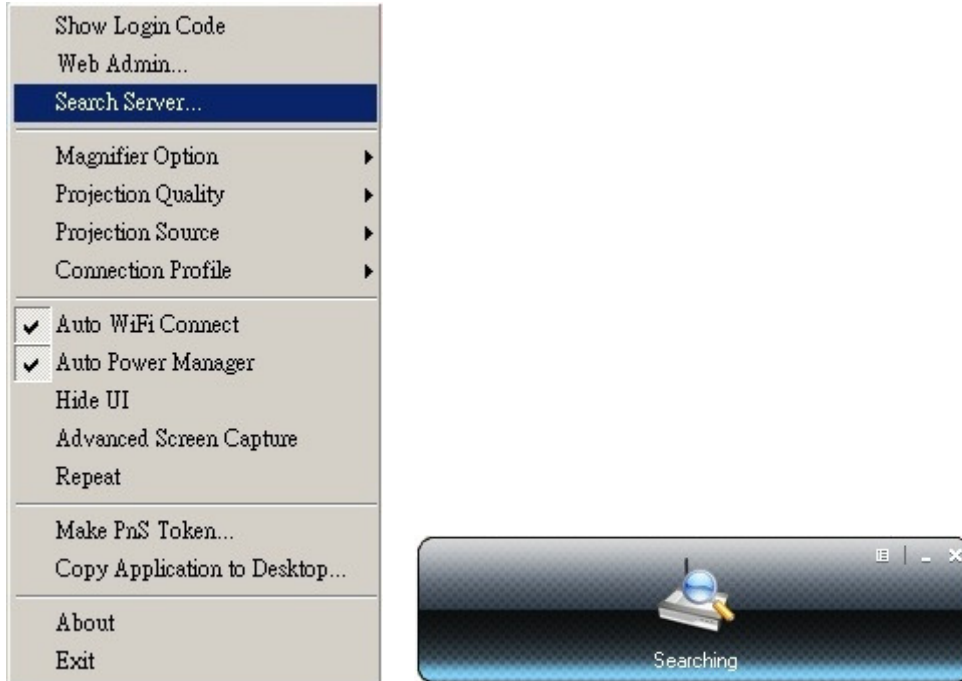
3.7.2 Open Admin Web Page

Click  to open function menu and select "**Web Admin**" management web page. The web page detailed functions will be described on next chapter.



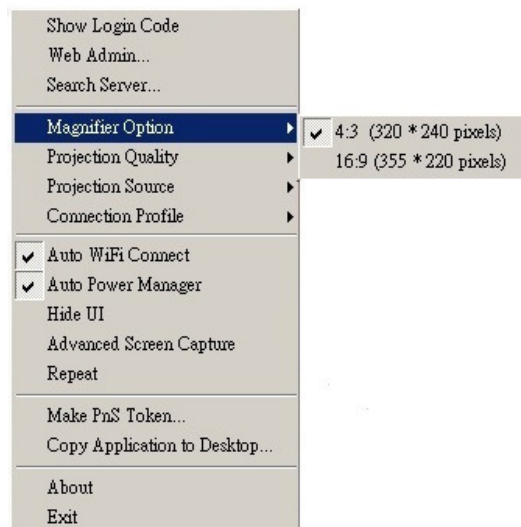
3.7.3 Searching Server

Click "Search Server" to re-search the WPS again.



3.7.4 Magnifier Option

Click "Magnifier option" to change the aspect ratio of captured video region with magnifier feature.





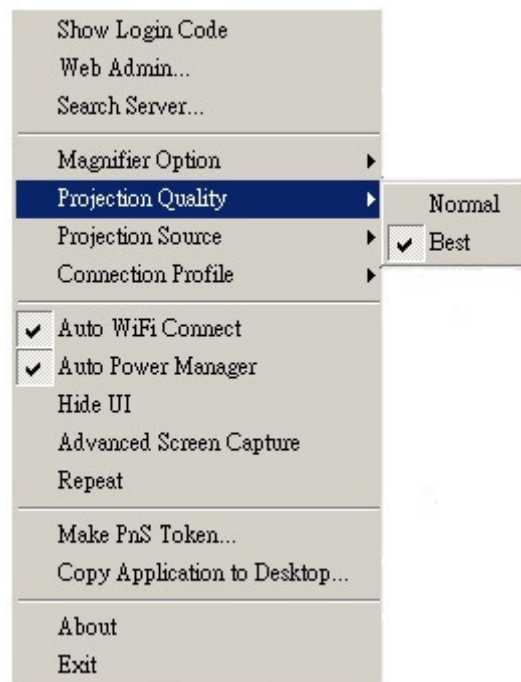
4:3 (320x240 pixels)



16:9 (355x220 pixels)

3.7.5 Projection Quality

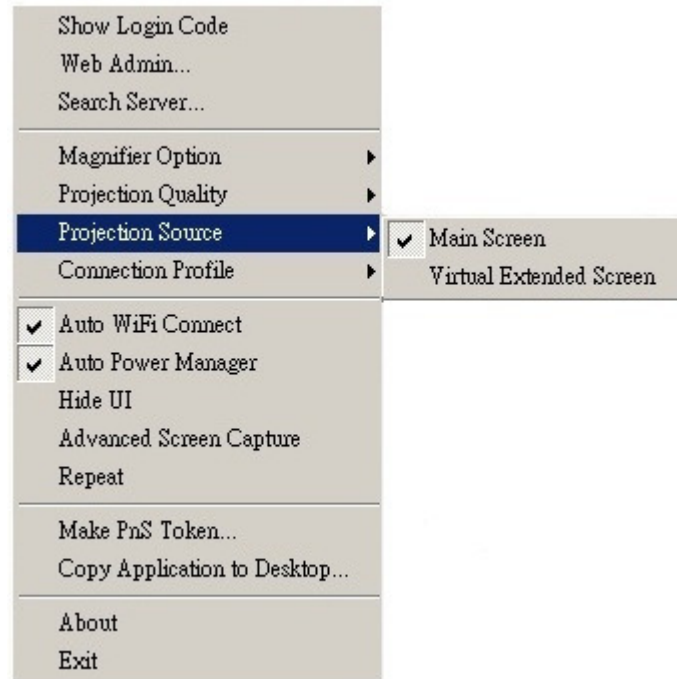
Click the "Projection Quality", choose "Normal" for faster projection speed with lower screen image quality, and "Best" for clear screen image quality but slower projection speed.



3.7.6 Projection Source

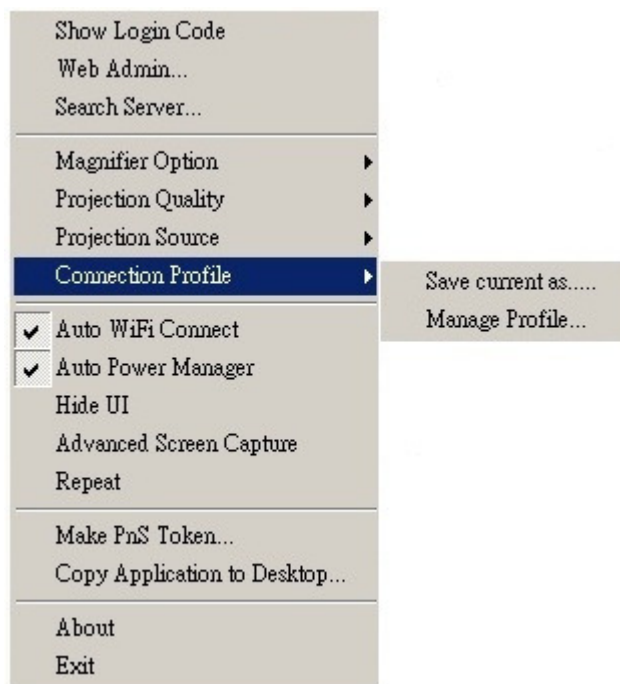
Click the "Projection Source", you can select to project the main screen of desktop or the virtual extended screen.

PS. This function is only supported on Windows XP and need to install another virtual display driver first.

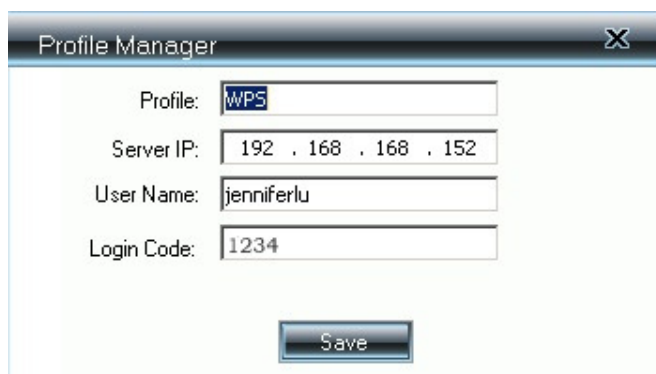


3.7.7 Connection Profile

Click "Profile Manager", you can click "save current as" to save current connection configuration into Profile, or click the "Profile Manager" to add, delete or modify current profiles.



- **Save Current as**
Click the "Save current as", it will save your current connection into profile for future quick connect.

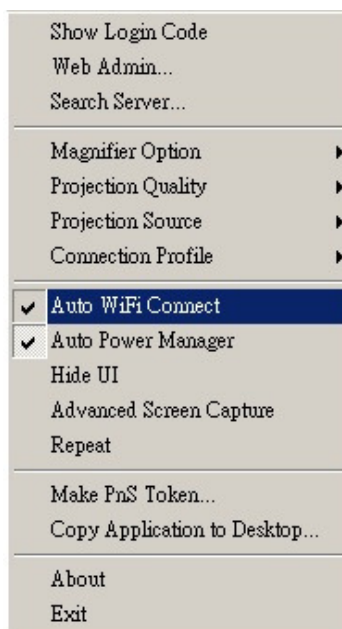


- **Manage Profile**
Click the "Manage Profile", you can see current profile, add or delete the profile, and edit the existing profile.



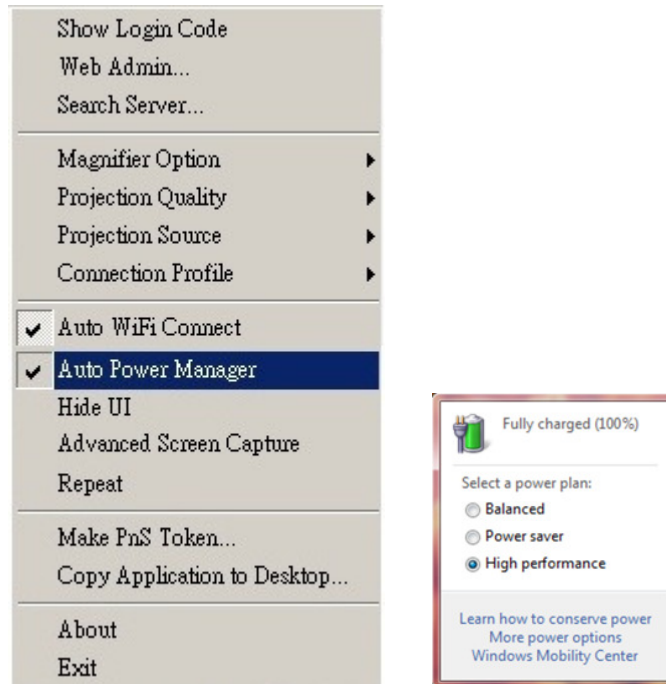
3.7.8 Auto WiFi connect

Click "Auto WiFi Connect" to enable the AWZC function, this function can save the WiFi connection steps.



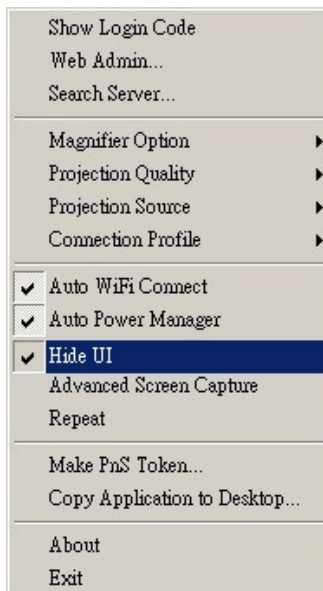
3.7.9 Auto Power Manager

To make the highest projection performance, application will turn the PC's windows power scheme from current settings to "highest performance", however, you can click the "Auto Power Manager" to enable or disable this function and restore you power scheme immediately.



3.7.10 Hide UI

Click the “Hide UI”, you can choose to hide or display the application control panel from projection screen.

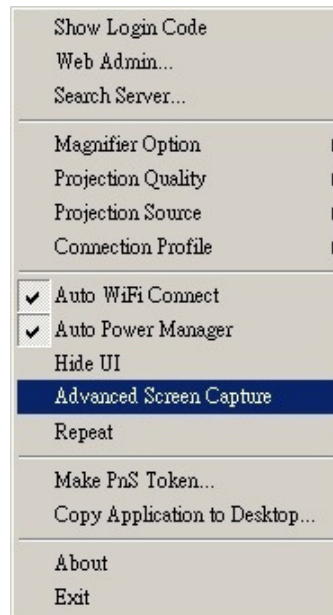


3.7.11 Advanced Screen Capture

Click the “Advanced Screen Capture”, you will be able to see tip windows and other layered windows (include the main UI) on the connected display.

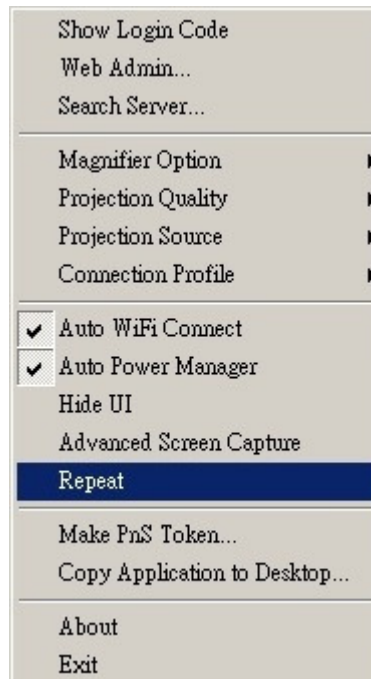
English Manual

However, the mouse cursor may blink from time to time when you are projecting your PC screen!



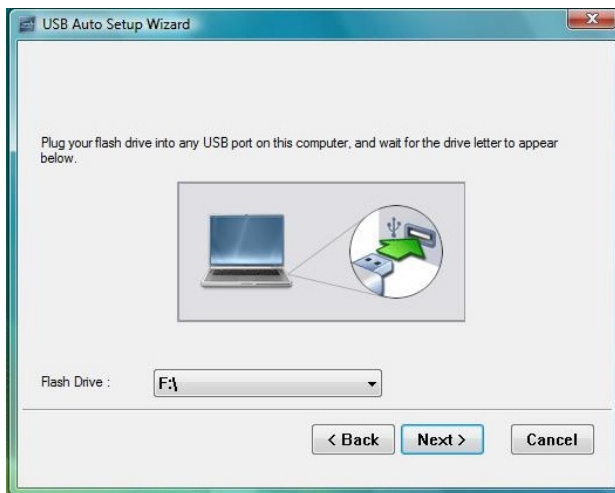
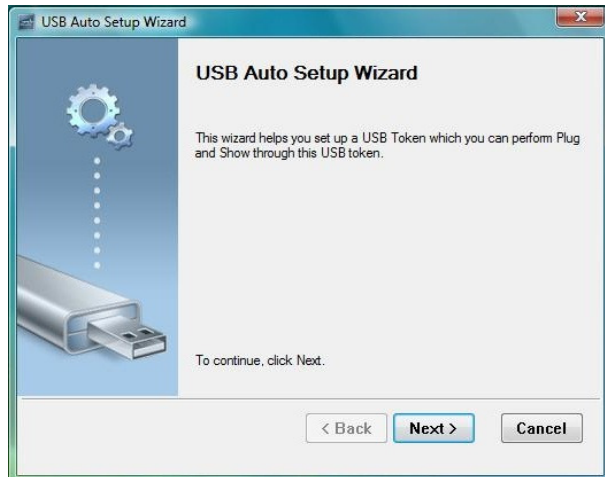
3.7.12 Repeat

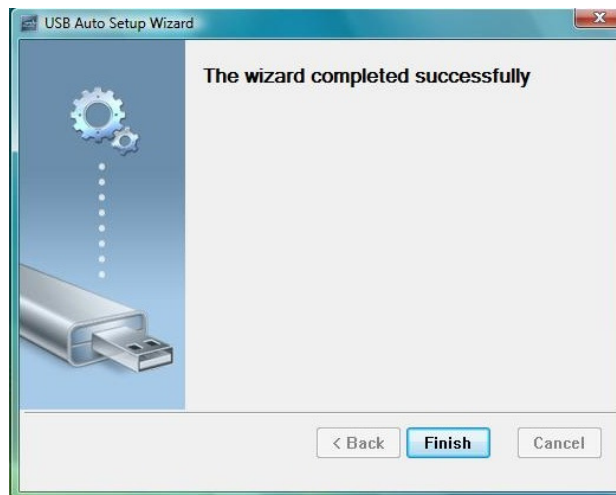
Click the "Repeat", you can choose to playback current video/audio file repeat or not.



3.7.13 Make PnS Token

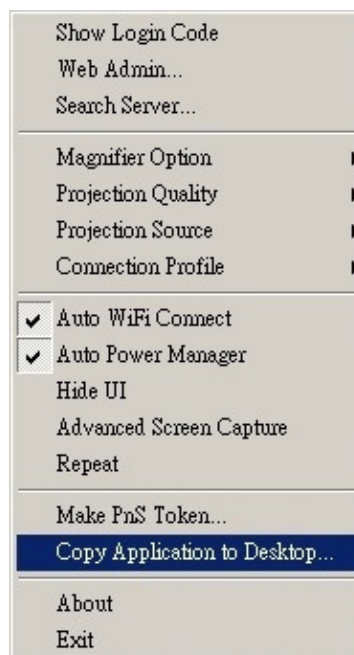
Click "Make PnS Token" to make a USB WPS Token, you can insert a USB thumb drive and follows the wizard to make the Token.





3.7.14 Copy Application to desktop

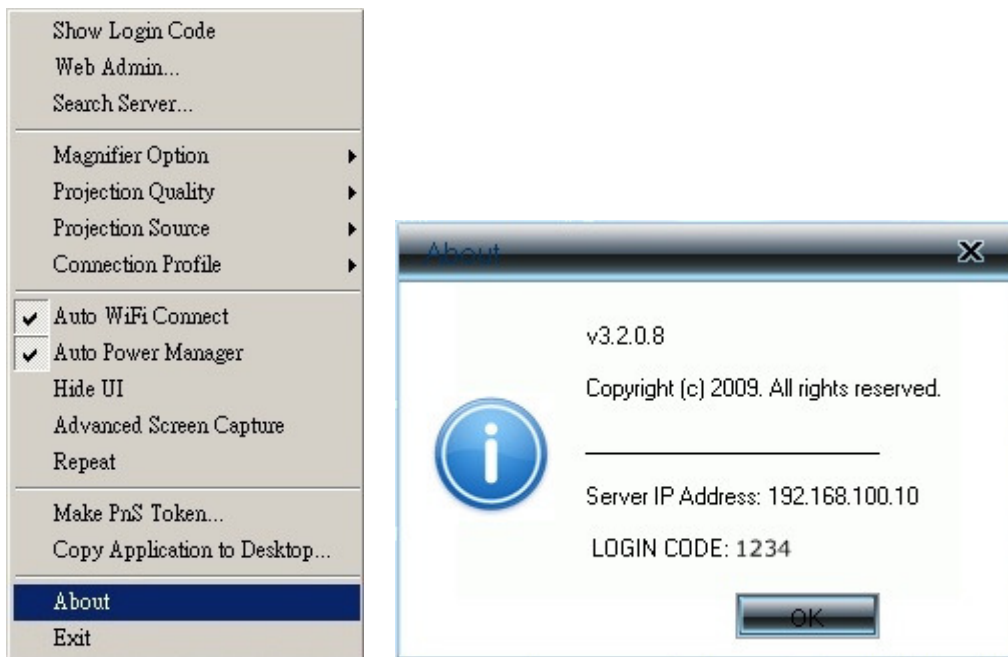
Click the "Copy Application to desktop"; it will copy the application to your desktop immediately even you don't have the system privilege



3.7.15 About

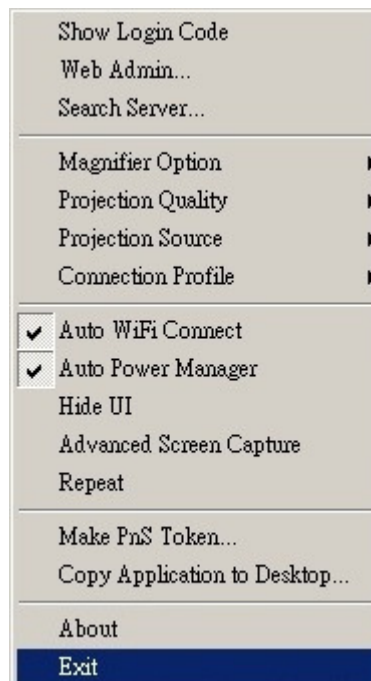
Click "**About**" to show system information. It includes Client version, IP address and other information.

English Manual



3.7.16 Exit

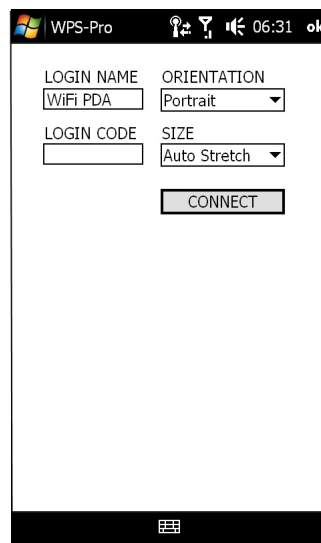
Click "**Exit**" to exit this application. It will stop current playing status and close the application immediate.



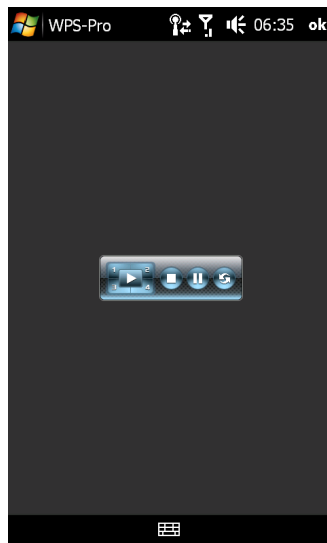
4. WPS for PDA

To project your PDA screen with WPS, please follow the steps:

- 1) Enable your WiFi and connect to WPS.
- 2) Open the browser on your PDA and enter the IP address to download WPS Client software for PDA version.
 - ◆ The default IP address is 192.168.100.10.
 - ◆ Or, refer to the IP address which shown on the projector screen.
- 3) Install WPS client software.
- 4) Launch WPS software and enter the login code.



- 5) Start Projection.



5. Mac Client Utility

5.1 Launch Application

- 1) Enable your WiFi and connect to WPS device.
- 2) Execute WPS client software for Mac.



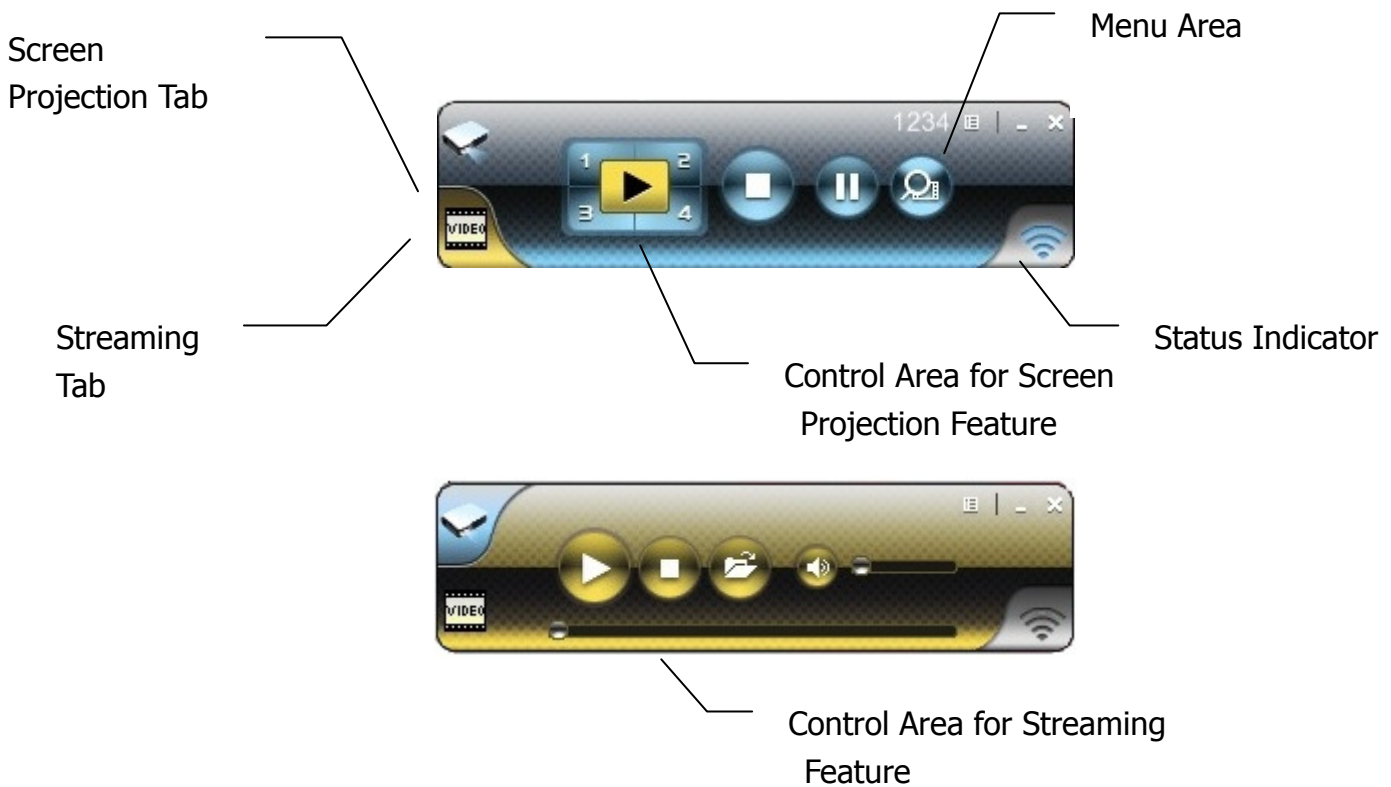
- 3) Launch WPS software and enter the login code.



- 4) Start Projection.



5.2 Main User Interface






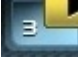




5.3 Screen Projection

Click the "Play" button for full or split screen, you can project the main screen on to the display immediately, click the "Pause" button, you can freeze you projection

English Manual

screen, and click the "Stop" button to stop projecting your screen.

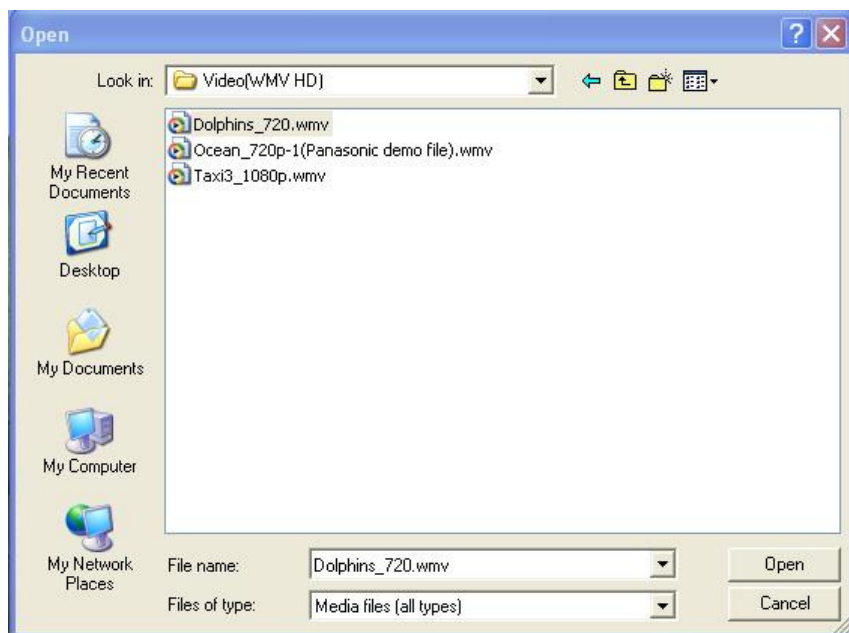


| Button | Description |
|---|------------------------|
|  | Full Screen projection |
|  | Project to Split #1 |
|  | Project to Split #2 |
|  | Project to Split #3 |
|  | Project to Split #4 |
|  | Stop projecting |
|  | Pause projecting |
|  | Magnifier |




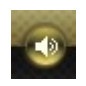
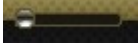

5.4 Video/Music streaming Feature

Click the "Video Tab" to switch to Video Mode, choose a video/audio file, then it will stream the original file to playback on the screen.





* Supported Video/Audio Format: MPEG1/2, DivX(3.4.5), XviD(MPEG4), WMV9, MP3, WMA

| Button | Description |
|---|---------------------------|
|  | Start Playing Video/Music |
|  | Stop Playing Video/Music |
|  | Open Video/Music File |
|  | Mute |
|  | Volume Level |
|  | Progress Bar |

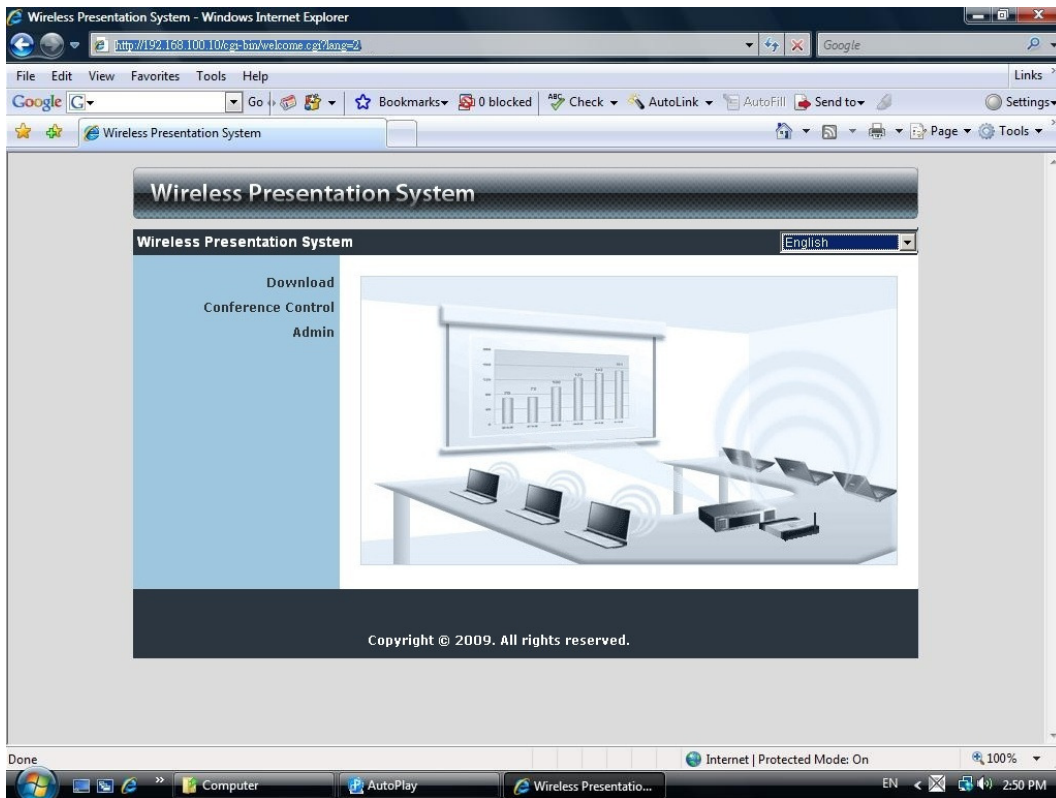
6. Web Management

6.1 Home Page

1. Make sure your PC connect to WPS box successfully.
2. Open your browser, it will enter WPS home page automatically.
3. If not, enter your IP address on the browser, you can see the IP on the projector screen.

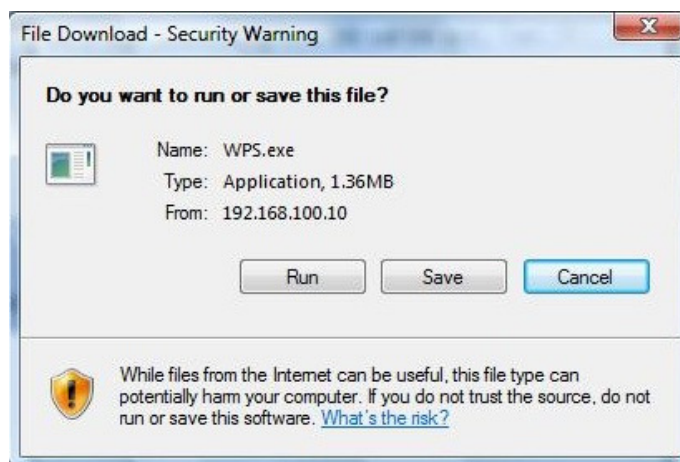
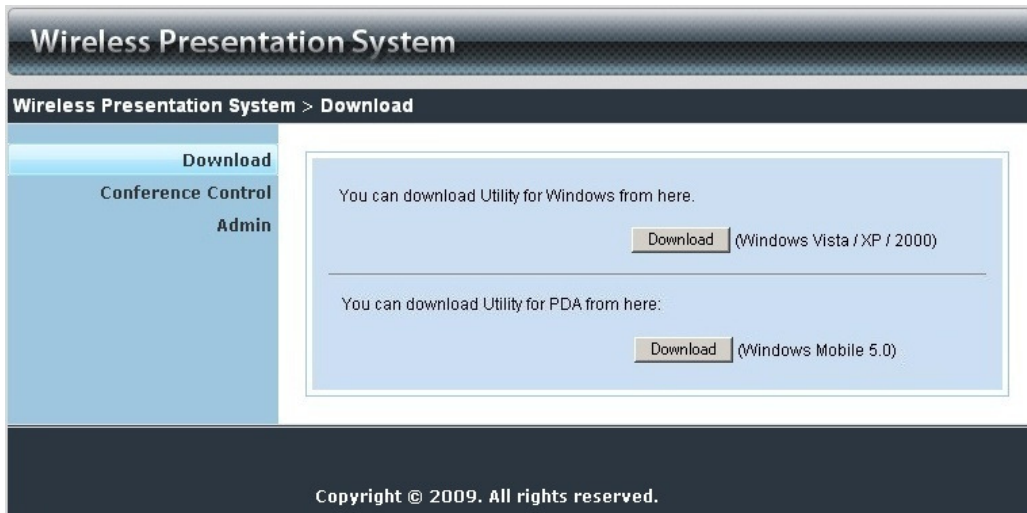
English Manual

4. The default IP is 192.168.100.10



6.2 Download Software

1. Select "Download software" function.
2. Please select the "Windows Vista / XP / 2000" or "Windows Mobile 5.0" and execute the installation program.
3. Follow Installation Wizard instructions to proceed till the installation process complete.
4. If pop up "**Windows Security Alert**" because Windows firewall block this program. You just press "**Unblock**" button to continue installation.
5. Once installation complete, a utility shortcut come out on the screen.









6.3 Conference Control


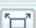







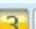

- 1) This function allows you to host a meeting smoothly without projector cable swapping and each participant can show their presentation easily.
- 2) Select "**Conference Control**" function.
- 3) Enter password, the default value is "trainer", and then press [Login].



English Manual

- 4) After login, you can see a User List on the screen which indicates all of users connected to WPS box.
- 5) There are three columns, "**Computer Name**", "**Play Control**" and "**IP Address**".
- 6) Play Control, There are six buttons, including Play(Full) , Play Split #1 , Play Split #2 , Play Split #3 , Play Split #4  and Stop .
- 7) User List



| Computer Name | Play Control | IP Address |
|---------------|---|----------------|
| eunicewu |  1 2 3 4  | 192.168.100.12 |
| sandrahsieh |  1 2 3 4  | 192.168.100.13 |
| simon_huang |  1 2 3 4  | 192.168.100.14 |
| howardling |  1 2 3 4  | 192.168.100.15 |
| Jenniferlu |   2 3 4  | 192.168.100.16 |
| ashleychuang |  1  2 3 4  | 192.168.100.17 |
| firmanwu |  1 2  3 4  | 192.168.100.18 |
| ptchou |  1 2 3  4  | 192.168.100.19 |

6.4 Login Web Admin



Wireless Presentation System

Wireless Presentation System > Admin

Download
Conference Control
Admin

User Name **admin**

Password

Login

Copyright © 2009. All rights reserved.

1. Click [**Admin**] and then enter password to login web page.
2. The password default value is "admin".

6.4.1 System Status

The screenshot displays the 'System Status' page within the 'Wireless Presentation System' management interface. The page title is 'Wireless Presentation System > Management > System Status'. A 'Logout' button is visible in the top right corner. On the left, a navigation menu lists various system management options, with 'System Status' highlighted. The main content area shows a table of system information:

| System Status | |
|----------------------|------------------------|
| Model Name | WPS-VideoPro |
| Versions | |
| Firmware Version | 3.2.0.0 |
| Network Status | |
| IP Address | 192.168.168.152 |
| Subnet Mask | 255.255.255.0 |
| Default Gateway | 192.168.168.251 |
| Wireless MAC Address | 00:22:5F:17:0B:FF |
| Wired MAC Address | 00:12:5F:00:58:D6 |
| Connection Status | |
| Projecting Status | Waiting for Projecting |
| Total Users | 0 |

At the bottom of the interface, a copyright notice reads: 'Copyright © 2009. All rights reserved.'

Click [**System Status**], shows current system status.

Model Name: Product model name

Versions:

1. **Firmware version no.:** Product firmware version number.

Network Status:

1. **IP address :** IP address of WPS device.
2. **Subnet Mask :** subnet mask
3. **Default Gateway :** default gateway
4. **Wireless MAC address :** wireless MAC address
5. **Wire MAC address :** wire MAC address

Connection Status:

1. **Projecting status:** which is "Waiting for projecting" or "Projecting"
2. **Total Users:** It shows how many users login into WPS box.

6.4.2 Network Setup

There are many kinds of operating configurations as below.

< Auto-Configuration Network Setup >

The default setting of the WPS box is DHCP client. When the WPS box is connected to a LAN that already has a DHCP server present, the WPS box takes an IP address assigned to it by the server. When the WPS box is connected to a LAN that does not have a DHCP server, the WPS box becomes the DHCP server in the network.

< IP Setup >

- ◆ You can select "obtain IP address automatically" or "Use the following IP address"
- ◆ IP Address: The default value is 192.168.100.10.
- ◆ Subnet Mask: The default value is 255.255.255.0
- ◆ Default Gateway: The default value is 192.168.100.10
- ◆ DNS Server: The default value is 192.168.100.10

< DHCP Server Setup >

- ◆ You can select "auto(Enable/Disable DHCP Server" or "Disable")
- ◆ Start IP: The start IP address of DHCP Server.

English Manual

- ◆ End IP: The end IP address of DHCP Server
- ◆ Subnet Mask: The default value is 255.255.255.0
- ◆ Default Gateway: The default value is 192.168.100.10
- ◆ DNS Server: The default value is 192.168.100.10

< Wireless Setup >

- ◆ Wireless LAN: The default value is "Enable"
- ◆ Region: default value is "Worldwide".
- ◆ SSID: SSID string, max. Length is 32 bytes.
- ◆ SSID Broadcast: The default value is "Enable"
- ◆ Channel: to set fixed channel or Auto. The "Auto" means after power on WPS, it will scan all of wireless channel and select clear one channel automatically.
- ◆ Encryption: you can select "Disable" or one of WEP/WPA/WPA2 64bit or 128bit in ASCII or HEX string.
- ◆ Key: If Encryption is enabled, you have to set key value according to the encryption mode you selected.

< Gatekeeper >

Gatekeeper is designed for ensuring the enterprise network security within WPS box

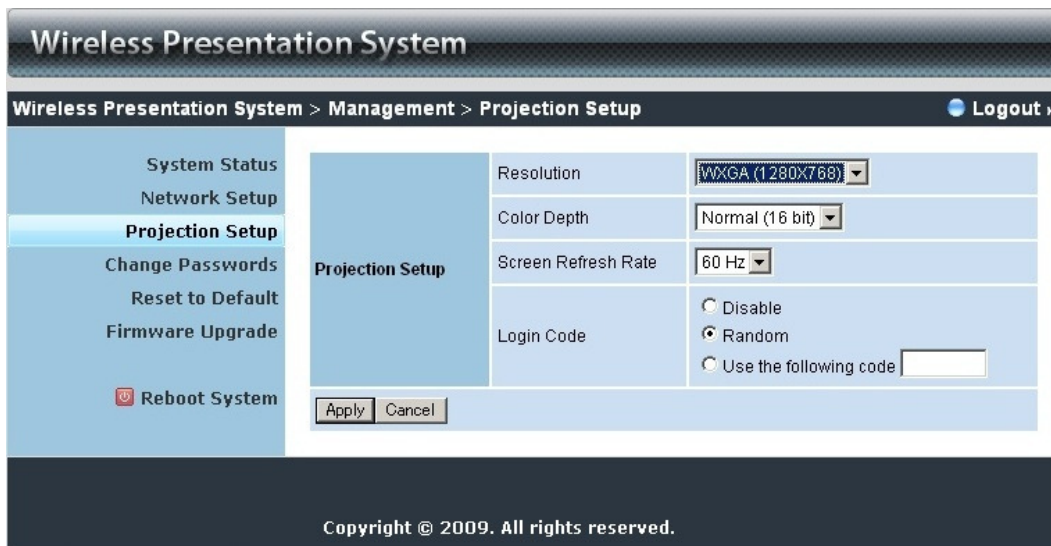
- ◆ All Block can block Guest Users(through wireless) to access all office network(LAN),
- ◆ All Allow can pass Guest Users(through wireless) to access all office network
- ◆ Internet Only can block Guest Users (through wireless) from office network (LAN) but still reserve internet connection capability.

<Apply >: press button to select this mode

<Cancel >: press button to abort action.

<Back >: Back to Operating mode main menu

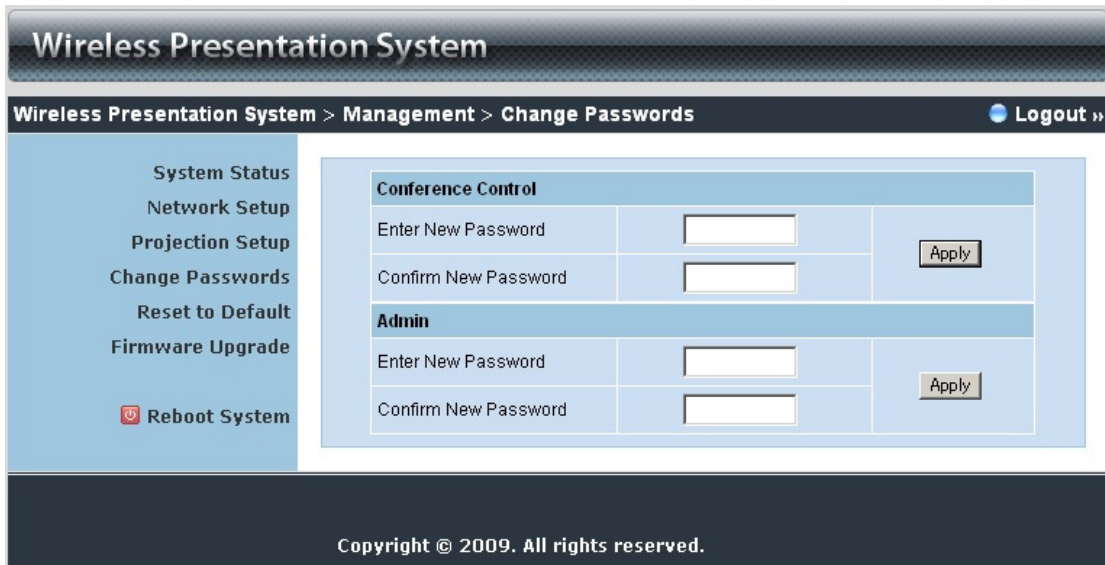
6.4.3 Projection Setup



Click [**Projection Setup**] button

- ◆ **<Resolution>**: 1024x768, 1280x768 and 800x600.
- ◆ **<Color Depth>**: provide WPS output with 16bit or 32 bit color depth. It depends on your PC settings.
- ◆ **<Screen Refresh Rate>**: This is VGA output refresh rate, provides 60 Hz and 75Hz to suit for different kinds of projectors.
- ◆ **<Login Code>**: You can select "Disable", "Random", or "Use the following code" to set a specified 4-characters Number.
- ◆ **<Apply>** : Confirmation and Save modifications
- ◆ **<Cancel>**: Cancel all the modifications

6.4.4 Change Passwords



Click [**Change Password**] button, to change password value.

- ◆ **<Enter New Password>**: enter new password you want to change for each category.
- ◆ **<Confirm New Password>**: double confirm new password.
- ◆ **<Apply>**: Confirmation and Save modifications.

6.4.5 Reset to Default



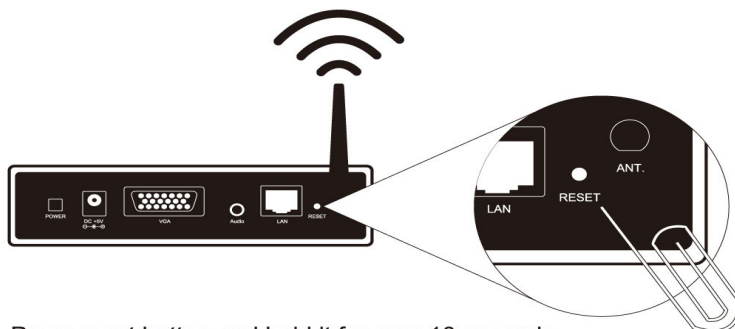
Click [**Reset to Default**] button to restore factory default settings.

<Apply>: Confirmation and action.

English Manual

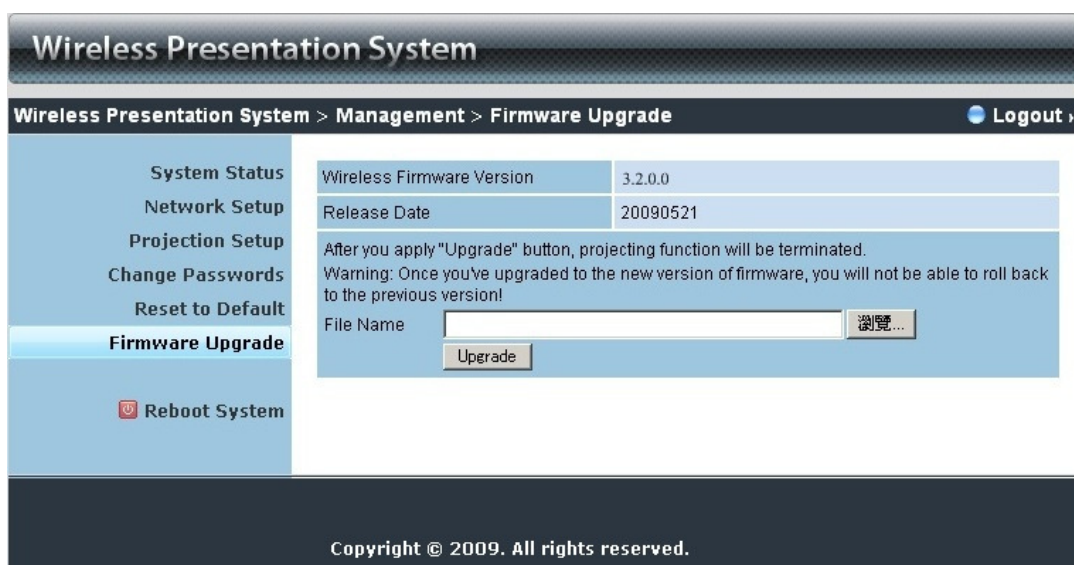
***** Another way to restore Factory Default Settings, Follow below procedures.**

1. Press [**Reset**] button and **Hold**.
2. Turn on WPS box.
3. Wait for over 10 seconds and relief [**Reset**] button.
4. It will take effect to restore factory default settings.



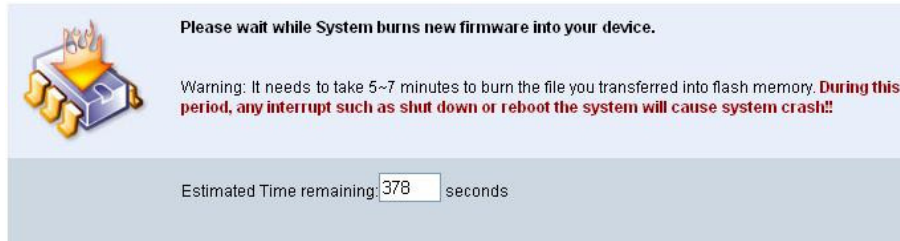
Press reset button and hold it for over 10 seconds.


6.4.6 Firmware Upgrade



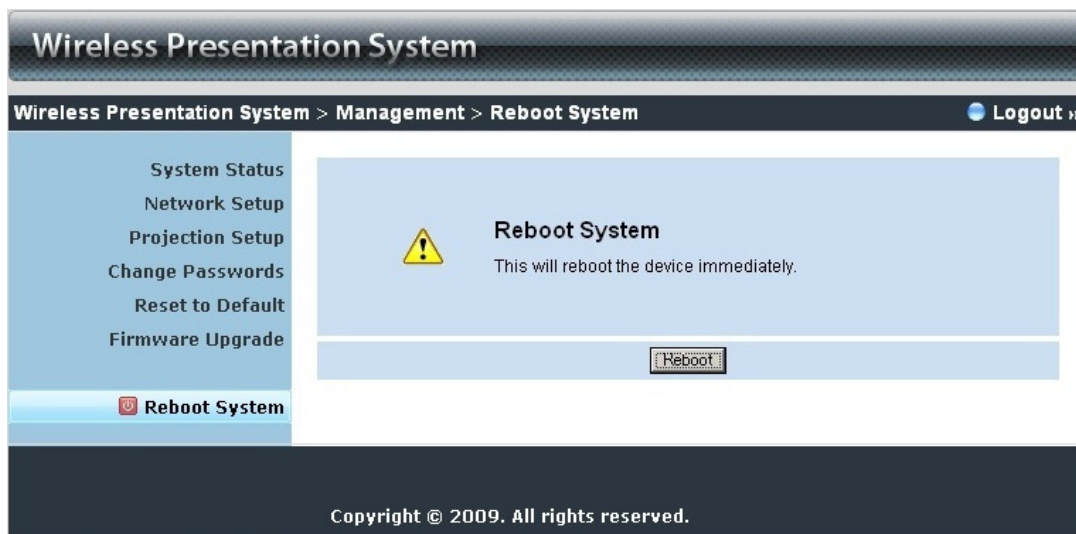
Click [**Firmware Upgrade**] button to upgrade firmware.

1. Firstly, you have to get latest firmware image file from your vendor.
2. Click **<Browse>** to specify file name you want to upgrade.
3. Click **<Upgrade>** to start.
4. A warning message shown and count down counter on the screen.
5. After a few minutes, a complete message shown on the screen.
6. Restart WPS box to take effect.



 **Warning:** Don't power off WPS while firmware upgrade in progress, otherwise will cause your Box doesn't work and have to return device to your vendor for fixing.

6.4.7 Reboot System



Click [**Reboot System**] button, to restart system

- ◆ **<Reboot>**: reboot system automatically.

6.4.8 Logout

The screenshot displays the 'Wireless Presentation System' management interface. The breadcrumb navigation shows 'Wireless Presentation System > Management > System Status'. A 'Logout »' button is highlighted with a red box in the top right corner. The main content area is divided into a left sidebar with navigation options and a right table of system information.

Wireless Presentation System

Wireless Presentation System > Management > System Status **Logout »**

| | | |
|------------------|--------------------------|------------------------|
| System Status | Model Name | WPS-VideoPro |
| Network Setup | Versions | |
| Projection Setup | Firmware Version | 3.2.0.0 |
| Change Passwords | Network Status | |
| Reset to Default | IP Address | 192.168.168.152 |
| Firmware Upgrade | Subnet Mask | 255.255.255.0 |
| Reboot System | Default Gateway | 192.168.168.251 |
| | Wireless MAC Address | 00:22:5F:17:0B:FF |
| | Wired MAC Address | 00:12:5F:00:58:D6 |
| | Connection Status | |
| | Projecting Status | Waiting for Projecting |
| | Total Users | 0 |

Copyright © 2009. All rights reserved.

Radio Frequency Energy, Certifications

Shielded cables must be used with this equipment to maintain compliance with radio frequency energy emission regulations and ensure a suitably high level of immunity to electromagnetic disturbances.

FCC Warning

This equipment has been tested and found to comply with the limits for a Class B Digital device, pursuant to part 15 of the FCC Rules. These limits are designed to provide reasonable protection against harmful interference in a residential installation. This equipment generates, uses, and can radiate radio frequency energy and, if not installed and used in accordance with the instructions, may cause harmful interference to radio communications. However, there is no guarantee that interference will not occur in a particular installation. If this equipment does cause harmful interference to radio or television reception, which can be determined by turning the equipment off and on, the user is encouraged to try to correct the interference by one or more of the following measures:

- Reorient or relocate the receiving antenna
- Increase the separation between the equipment and receiver
- Connect the equipment into an outlet on a circuit different from that to which the receiver is connected
- Consult the dealer or an experienced technician for help

You are cautioned that changes or modifications not expressly approved by the party responsible for compliance could void your authority to operate the equipment.

This device complies with part 15 of the FCC Rules. Operation is subject to the following two conditions:

1. This device may not cause harmful interference, and
2. This device must accept any interference received, including interference that may cause undesired operation

CE Statement, EMC Compatibility

This device complies with EN Standards EN55022 and EN55024 according to the relevant EC EMC Directive. It must be used with shielded cables only to maintain EMC compatibility.

Dieses Produkt entspricht den einschlägigen EMV Richtlinien der EU und darf nur zusammen mit abgeschirmten Kabeln verwendet werden.

LINDY Herstellergarantie

LINDY gewährt für dieses Produkt über die gesetzliche Regelung hinaus eine zweijährige Herstellergarantie ab Kaufdatum. Die detaillierten Bedingungen dieser Garantie finden Sie auf der LINDY Website aufgelistet bei den AGBs.



**WEEE (Waste of Electrical and Electronic Equipment),
Recycling of Electronic Products**

In 2006 the European Union introduced regulations (WEEE) for the collection and recycling of all waste

Radio Frequency Energy, Certifications

electrical and electronic equipment. The wheellie bin symbol shown indicates that this product must not be disposed of with household waste. Instead the product must be recycled in a manner that is environmentally friendly. For more information on how to dispose of this product, please contact your local recycling centre or your household waste disposal service. Each individual EU member state has implemented the WEEE regulations into national law in slightly different ways. Please follow your national law when you want to dispose of any electrical or electronic products.

More details can be obtained from your national WEEE recycling agency.

Germany / Deutschland

Die Europäische Union hat mit der WEEE Richtlinie umfassende Regelungen für die Verschrottung und das Recycling von Elektro- und Elektronikprodukten geschaffen. Diese wurden von der Bundesregierung im Elektro- und Elektronikgerätegesetz – ElektroG in deutsches Recht umgesetzt. Dieses Gesetz verbietet vom 24. März 2006 an das Entsorgen von Elektro- und Elektronikgeräten über die Hausmülltonne! Diese Geräte müssen den lokalen Sammelsystemen bzw. örtlichen Sammelstellen zugeführt werden! Dort werden sie kostenlos entgegen genommen. Die Kosten für den weiteren Recyclingprozess übernimmt die Gesamtheit der Gerätehersteller.

LINDY No 32699

1st Edition, September 2009

www.lindy.com



Free Manuals Download Website

<http://myh66.com>

<http://usermanuals.us>

<http://www.somanuals.com>

<http://www.4manuals.cc>

<http://www.manual-lib.com>

<http://www.404manual.com>

<http://www.luxmanual.com>

<http://aubethermostatmanual.com>

Golf course search by state

<http://golfingnear.com>

Email search by domain

<http://emailbydomain.com>

Auto manuals search

<http://auto.somanuals.com>

TV manuals search

<http://tv.somanuals.com>