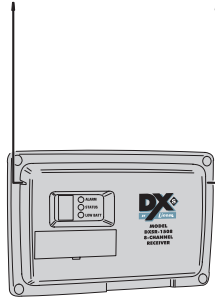


DXSR-1504 DXSR-1508

SUPERVISED DIGITAL RECEIVERS

Installation Instructions



Linear[®]

(760) 438-7000 • FAX (760) 438-7043
USA & Canada (800) 421-1587 & (800) 392-0123
Toll Free FAX (800) 468-1340
www.linearcorp.com

PRODUCT DESCRIPTION

The DXSR-1504 and DXSR-1508 are four and eight channel supervised digital receivers with solid state outputs designed for use with Linear's DX and DXS Format transmitters. These receivers can be used in a variety of security and remote control applications. When the receiver detects a signal from a transmitter programmed into its memory, the appropriate channel output activates. The channel outputs have three optional configurations; momentary, toggle on/off, and latch until restored. Status and low battery outputs are for supervisory indications. Cutting jumpers select which channels require supervisory status reports from transmitters.

Each unit incorporates a dual high-sensitivity superheterodyne diversity receiver with two whip antennas. This type of receiver provides superior performance by preventing loss of signal due to multi-path interference.

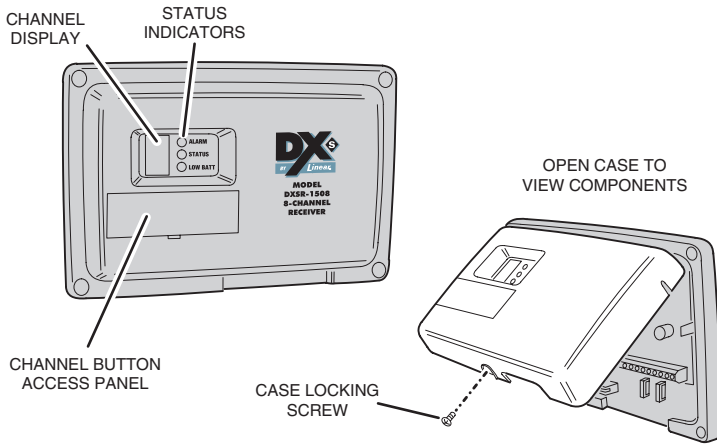
In a typical installation, the receiver is connected to an alarm control panel, door strike, camera, high current relay or some other devices. Transmitters are used to activate or control the devices. The receiver should be mounted indoors or inside a weather resistant *non-metallic* housing for outdoor use.

The digital DX/DXS code format features over a million possible codes. The transmitters are precoded at the factory to unique codes, so no field coding is required. For versatility, *any transmitter can be programmed into any receiver channel*. Receivers must be programmed to recognize the transmitter's code before system testing and operation. Up to 32 transmitters can be programmed into the receiver. Each button on multi-button portable transmitters send a unique code, and are programmed as separate transmitters.

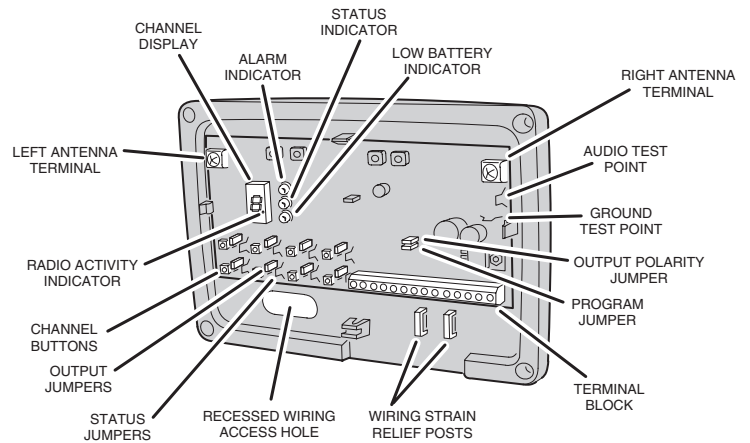
The CHANNEL display shows the channels activated and the presence of radio activity. Individual indicators for ALARM, STATUS, and LOW BATT show the supervisory status of each receiver channel. All outputs can be configured for normally open or normally closed.

The units can be powered from a 10.2-14.4 VDC or 12-16 VAC power source. The units will draw about 35 mA standby and up to 120 mA in alarm.

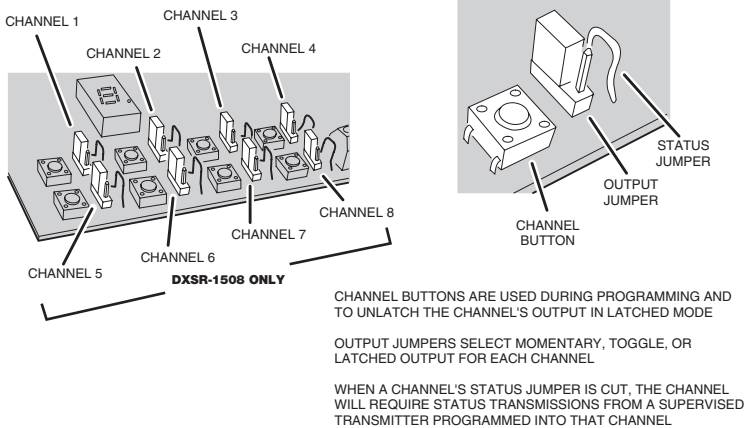
FEATURES



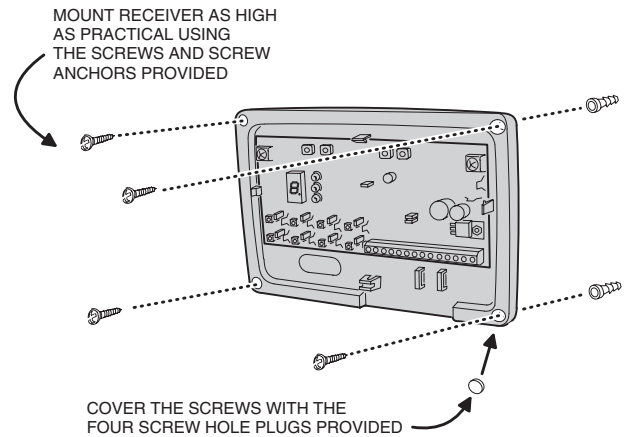
COMPONENT LOCATIONS



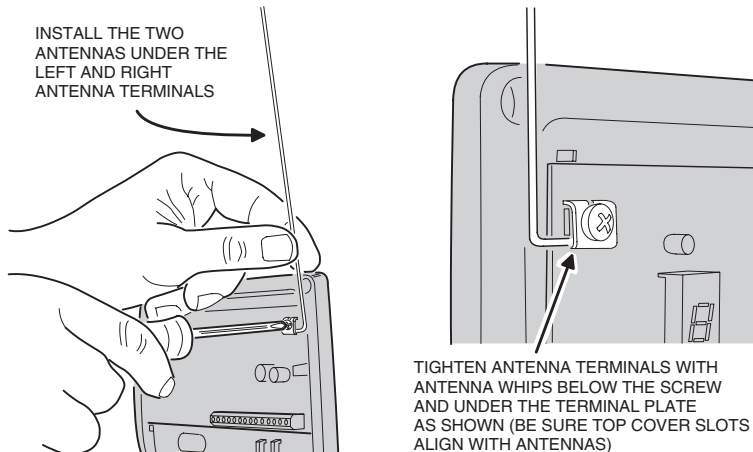
OPTION JUMPERS AND CHANNEL BUTTONS DETAIL



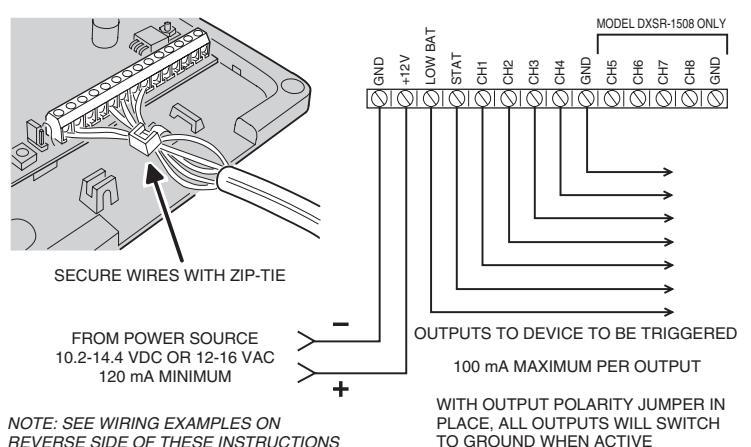
MOUNT RECEIVER



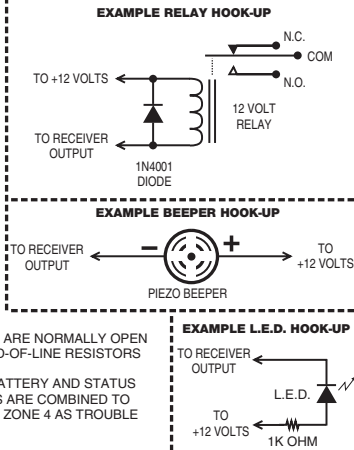
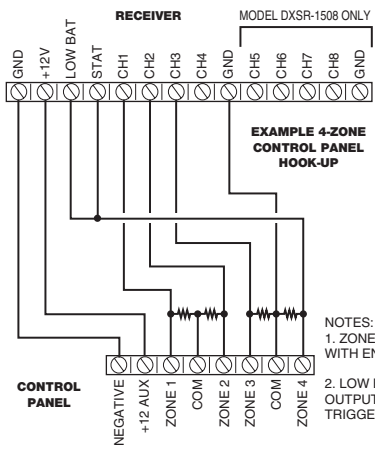
ATTACH ANTENNAS



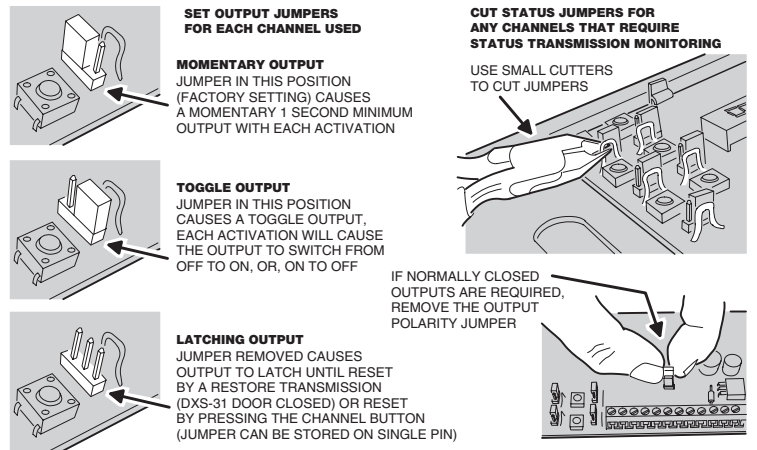
CONNECT TERMINALS



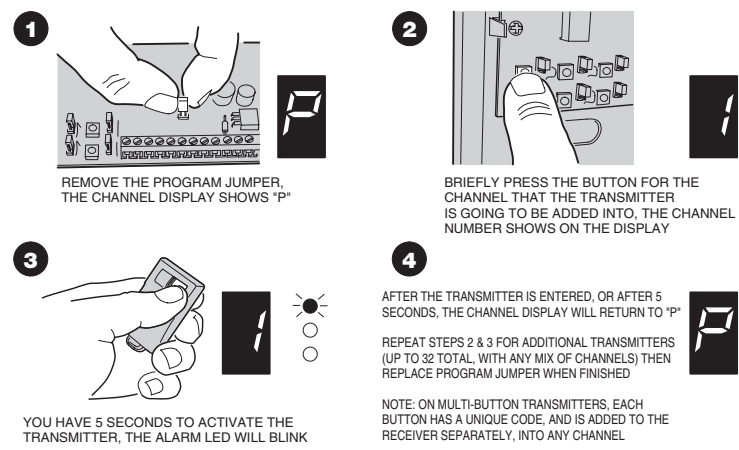
WIRING EXAMPLES



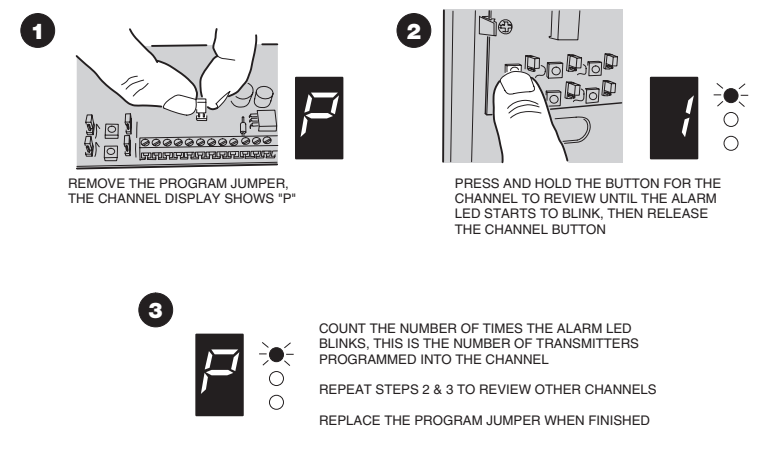
SELECT OPTIONS



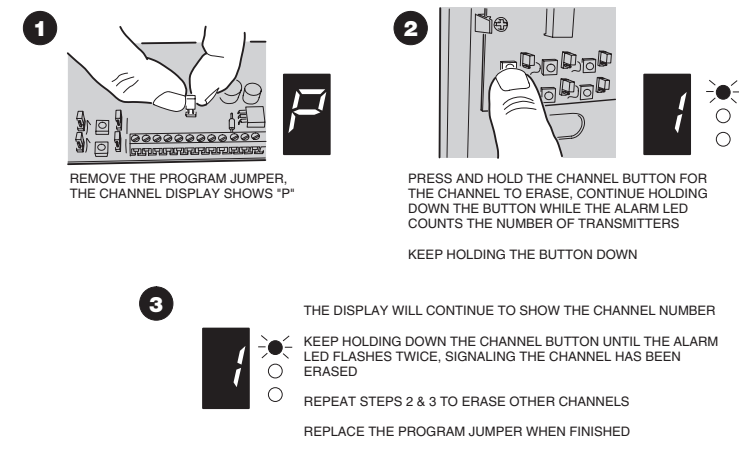
ADDING TRANSMITTERS



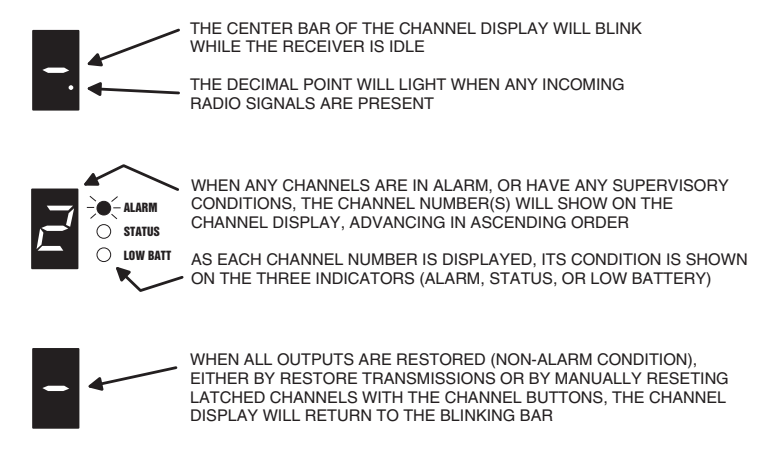
REVIEWING MEMORY



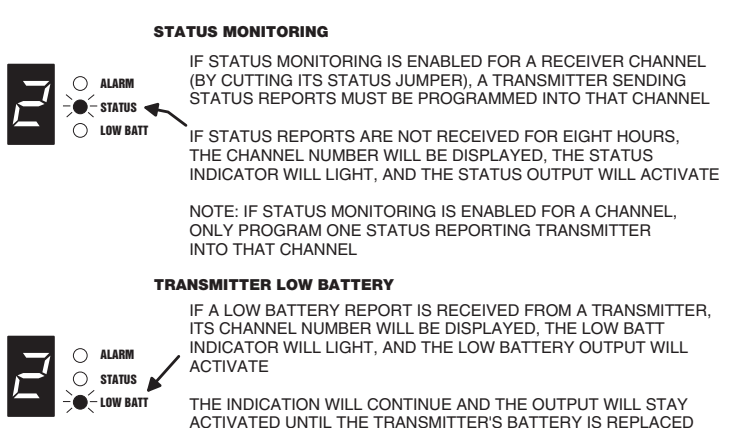
REMOVING TRANSMITTERS



SYSTEM OPERATION



SUPERVISORY CONDITIONS



LINEAR LIMITED WARRANTY

This Linear product is warranted against defects in material and workmanship for twelve (12) months. The Warranty Expiration Date is labeled on the product. **This warranty extends only to wholesale customers** who buy direct from Linear or through Linear's normal distribution channels. **Linear does not warrant this product to consumers.** Consumers should inquire from their selling dealer as to the nature of the dealer's warranty, if any. **There are no obligations or liabilities on the part of Linear corporation for consequential damages arising out of or in connection with use or performance of this product or other indirect damages with respect to loss of property, revenue, or profit, or cost of removal, installation, or reinstallation.** All implied warranties, including implied warranties for merchantability and implied warranties for fitness, are valid only until Warranty Expiration Date as labeled on the product. **This Linear Corporation Warranty is in lieu of all other warranties express or implied.**

All products returned for warranty service require a Return Product Authorization Number (RPA#). Contact Linear Technical Services at 1-800-421-1587 for an RPA# and other important details.

IMPORTANT !!!

Linear radio controls provide a reliable communications link and fill an important need in portable wireless signaling. However, there are some limitations which must be observed.

- * For U.S. installations only: The radios are required to comply with FCC Rules and Regulations as Part 15 devices. As such, they have limited transmitter power and therefore limited range.
- * A receiver cannot respond to more than one transmitted signal at a time and may be blocked by radio signals that occur on or near their operating frequencies, regardless of code settings.
- * Changes or modifications to the device may void FCC compliance.
- * Infrequently used radio links should be tested regularly to protect against undetected interference or fault.
- * A general knowledge of radio and its vagaries should be gained prior to acting as a wholesale distributor or dealer, and these facts should be communicated to the ultimate users.

Free Manuals Download Website

<http://myh66.com>

<http://usermanuals.us>

<http://www.somanuals.com>

<http://www.4manuals.cc>

<http://www.manual-lib.com>

<http://www.404manual.com>

<http://www.luxmanual.com>

<http://aubethermostatmanual.com>

Golf course search by state

<http://golfingnear.com>

Email search by domain

<http://emailbydomain.com>

Auto manuals search

<http://auto.somanuals.com>

TV manuals search

<http://tv.somanuals.com>