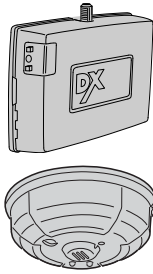


DX-COKIT



WIRELESS CARBON MONOXIDE ALARM WITH A TWO-CHANNEL DIGITAL RECEIVER



Installation Instructions

Linear

(760) 438-7000
USA & Canada (800) 421-1587 & (800) 392-0123
Toll Free FAX (800) 468-1340
www.linearcorp.com

PRODUCT DESCRIPTION

The DX-COKIT is a DXS-80 carbon monoxide (CO) alarm with a wireless transmitter that communicates with the matching DXR-702 two channel receiver. The CO alarm monitors its operating condition and the transmitter will send battery status to the receiver. If the battery is low, the receiver's channel two relay will latch until reset. In the event of an alarm, the transmitter will activate channel one of the DXR-702, and the receiver's relay will close for four seconds. **IMPORTANT: When the DXR-702 is connected to a security panel it is very important that the central station monitoring the location is advised of which zone(s) will report a carbon monoxide alarm.**

In a typical installation, the receiver is connected to an alarm control panel. The receiver should be mounted with the supplied mounting bracket indoors or inside a weather resistant non-metallic housing.

Refer to the instructions for the DXS-80 CO alarm included with this product for information about locating and mounting the DXS-80. Please read the DXS-80 instructions thoroughly for important information about the effects of carbon monoxide poisoning.

The digital DX code format features over a million possible codes. The DX transmitters are precoded at the factory to unique codes, so no field coding is required. *For versatility, any transmitter can be programmed into any receiver channel.* Receivers must be programmed to the transmitter's code before system testing and operation. Up to 32 transmitters maximum can be programmed into the receiver. The transmitters can be split in any number between the two receiver channels.

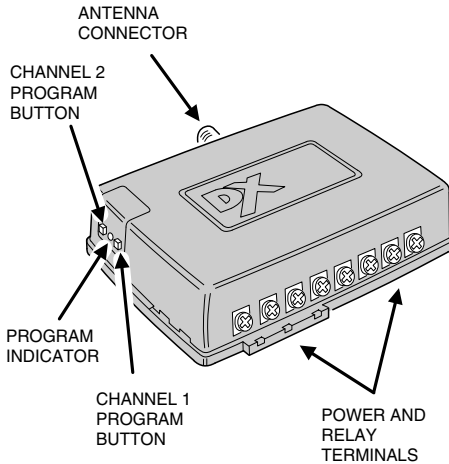
The DXS-80 CO alarm is factory programmed into channel one of the receiver that it boxed with in the DX-COKIT.

Receiver channel two is a special channel. If channel two memory is empty, with no transmitters programmed into it, it will report low battery signals from any channel one transmitters capable of sending them. When a low battery transmission is received, the channel two relay will latch. The relay will remain engaged until the channel two program button is pressed. The low transmitter batteries should be replaced before resetting the relay.

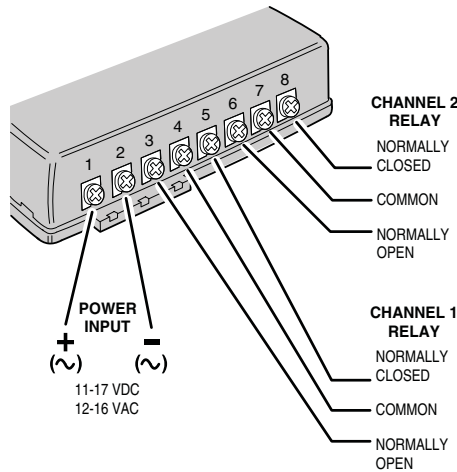
The receiver can be powered from a 11-17 VDC or 12-16 VAC power source. The relays' normally open and normally closed contacts can switch up to 1 amp at 24 volts AC/DC.

A nine-inch wire whip antenna screws into the receiver's antenna connector. Optionally, a remote antenna (Linear EXA-1000) can be connected to the receiver for greater radio range. The red program indicator lights during RF reception. The installer can verify that signals are being sent from transmitters and diagnose interference problems by viewing the indicator. The indicator also lights during memory programming/erasing and flashes to count the number of transmitters in memory.

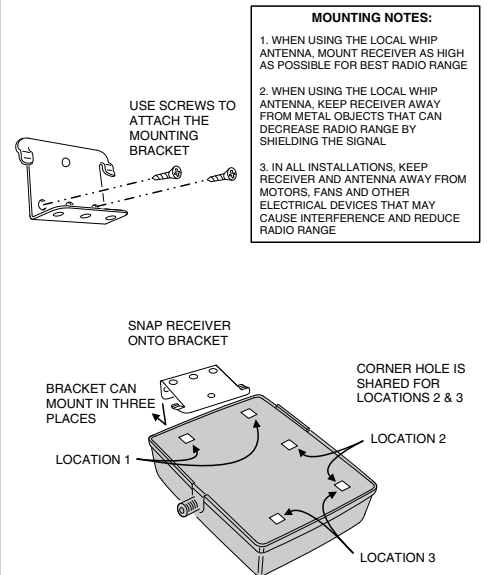
DXR-702 FEATURES



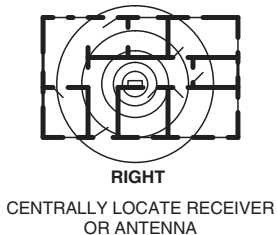
TERMINAL DETAILS



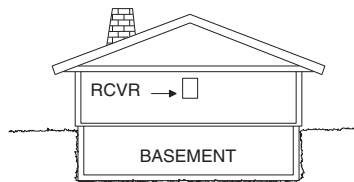
MOUNTING RECEIVER



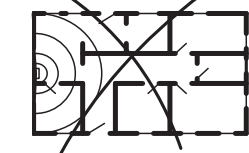
INSTALLATION TIPS



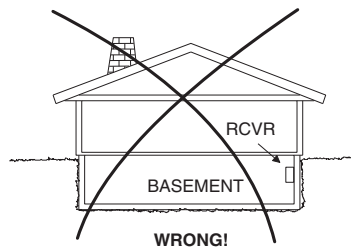
RIGHT
CENTRALLY LOCATE RECEIVER OR ANTENNA



RIGHT
MOUNT RECEIVER OR ANTENNA AS HIGH ABOVE EARTH LEVEL AS POSSIBLE



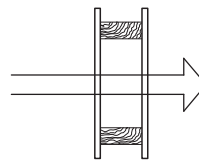
WRONG!
TRANSMITTERS AT THE OTHER END OF HOUSE MIGHT BE TOO FAR AWAY



WRONG!
LOCATING A RECEIVER OR ANTENNA BELOW EARTH LEVEL WILL IMPAIR RANGE

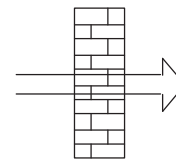
CONSTRUCTION MATERIALS WILL EFFECT RADIO RANGE

90% - 100% OF FULL POWER



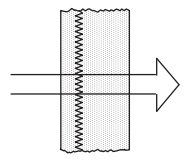
WALLBOARD AND WOOD STUDS

65% - 95% OF FULL POWER



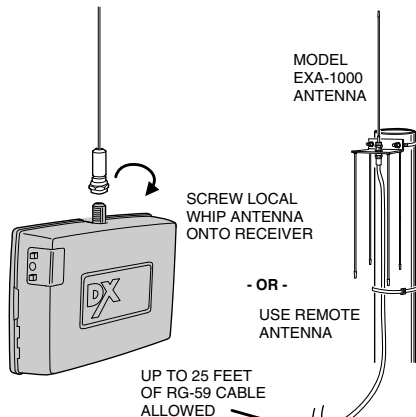
LIGHT CONCRETE OR BRICK

10% - 70% OF FULL POWER



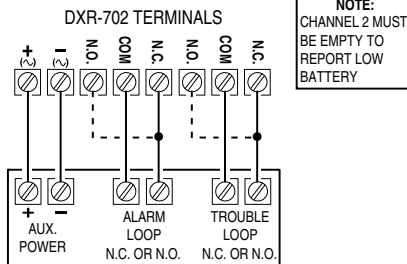
CONCRETE WITH STEEL REINFORCEMENT OR METAL LATH AND PLASTER

ANTENNA INSTALLATION



- ANTENNA NOTES:**
1. ANTENNA SHOULD BE MOUNTED AS HIGH AS PRACTICAL.
 2. KEEP ANTENNA AWAY FROM ELECTRICAL INTERFERENCE SOURCES.
 3. CENTRALLY LOCATE ANTENNA AMONG THE TRANSMITTERS.

TERMINAL CONNECTION



ALARM PANEL CONNECTION WITH LOW BATTERY REPORTING LATCHING RELAY OPTION

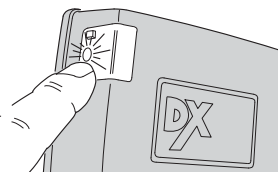
BUTTON AND INDICATOR FUNCTIONS

FUNCTION	PROGRAM BUTTON	PROGRAM INDICATOR
NORMAL OPERATION	RELEASES LATCHED RELAY FOR CHANNEL 1 OR 2	LIGHTS WHEN TRANSMITTER IS RECEIVED. FLASHES WHEN INTERFERENCE IS RECEIVED
PROGRAMMING MEMORY	PRESS AND RELEASE FOR CHANNEL 1 OR 2	LIGHTS FOR 3 SECONDS FOR PROGRAMMING
CHECKING MEMORY	PRESS FOR CHANNEL 1 OR 2 UNTIL BLINK AND RELEASE	BLINKS THE NUMBER OF TRANSMITTERS IN CHANNEL MEMORY
ERASING MEMORY	FOR CHANNEL 1 OR 2, PRESS AND HOLD THROUGH THE COUNT AND HOLD FOR 5 SECONDS MORE	AFTER BLINKING COUNT. A PAUSE THEN A SINGLE BLINK AS MEMORY IS ERASED (DOUBLE BLINK ON CHANNEL 2)

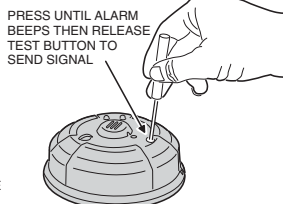
PROGRAMMING MEMORY

THE DXS-80 CO ALARM THAT IS INCLUDED IN THE COKIT IS ALREADY PROGRAMMED INTO THE ASSOCIATED DXR-702 RECEIVER. TO PROGRAM MORE DXS-80 CO ALARMS INTO THE RECEIVER USE THE FOLLOWING PROCEDURE.

1. PRESS AND RELEASE PROGRAM BUTTON FOR THE DESIRED CHANNEL. IF LOW BATTERY REPORTING IS DESIRED, BE SURE TO LEAVE CHANNEL TWO EMPTY.
2. PROGRAM INDICATOR WILL LIGHT FOR 10 SECONDS IF THERE IS ROOM IN THAT CHANNEL'S MEMORY FOR ANOTHER TRANSMITTER (32 TRANSMITTERS MAXIMUM TOTAL ALLOWED BETWEEN BOTH CHANNELS IN THE RECEIVER).
3. WITHIN 10 SECONDS, SEND SIGNAL FROM TRANSMITTER. PROGRAM INDICATOR WILL FLICKER AS SIGNAL IS RECEIVED.
4. REPEAT THE ABOVE THREE STEPS FOR EACH ADDITIONAL TRANSMITTER.



AFTER PUSHING THE RECEIVER'S PROGRAMMING BUTTON, YOU ONLY HAVE 10 SECONDS TO SEND A SIGNAL BEFORE PROGRAMMING MODE STOPS

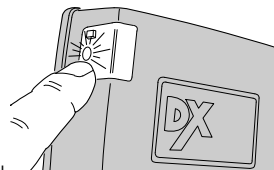


PRESS UNTIL ALARM BEEPS THEN RELEASE TEST BUTTON TO SEND SIGNAL

A TEST SIGNAL WILL BE SENT A FEW SECONDS AFTER THE SWITCH IS RELEASED

CHECKING MEMORY

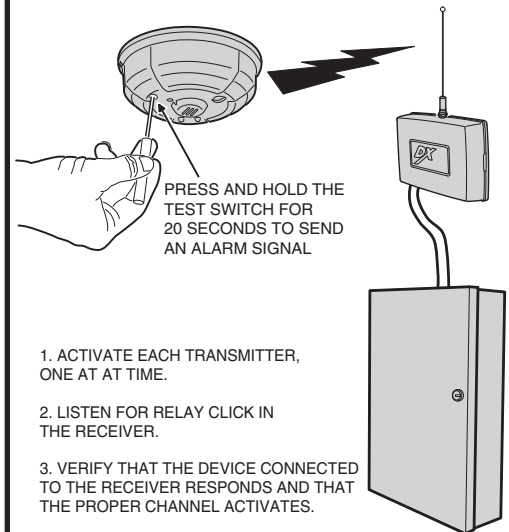
1. PRESS PROGRAM BUTTON FOR THE DESIRED CHANNEL AND HOLD FOR ABOUT TWO SECONDS UNTIL INDICATOR LIGHTS THEN RELEASE.
2. COUNT THE NUMBER OF INDICATOR BLINKS. THIS IS THE TOTAL NUMBER OF TRANSMITTERS PROGRAMMED INTO THAT CHANNEL.



PUSH UNTIL INDICATOR LIGHTS

NOTE: DO NOT CONTINUE TO PRESS BUTTON OR MEMORY WILL BE ERASED

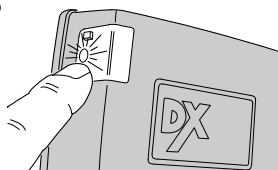
SYSTEM TESTING



1. ACTIVATE EACH TRANSMITTER, ONE AT A TIME.
2. LISTEN FOR RELAY CLICK IN THE RECEIVER.
3. VERIFY THAT THE DEVICE CONNECTED TO THE RECEIVER RESPONDS AND THAT THE PROPER CHANNEL ACTIVATES.

ERASING MEMORY

1. PRESS PROGRAM BUTTON FOR THE CHANNEL TO ERASE AND CONTINUE TO HOLD IT THROUGH THE COUNT OF THE TRANSMITTERS.
2. CONTINUE TO HOLD THE BUTTON AFTER THE COUNT UNTIL THE INDICATOR BLINKS ONCE FOR CHANNEL ONE, TWICE FOR CHANNEL TWO (ABOUT FIVE SECONDS AFTER THE COUNT).
3. ALL TRANSMITTERS PROGRAMMED INTO THAT CHANNEL WILL BE ERASED.



PUSH AND HOLD BUTTON FOR FIVE SECONDS AFTER THE TRANSMITTER COUNT

LINEAR LIMITED WARRANTY

This Linear product is warranted against defects in material and workmanship for twenty-four (24) months. The Warranty Expiration Date is labeled on the product. **This warranty extends only to wholesale customers** who buy direct from Linear or through Linear's normal distribution channels. **Linear does not warrant this product to consumers.** Consumers should inquire from their selling dealer as to the nature of the dealer's warranty, if any. **There are no obligations or liabilities on the part of Linear LLC for consequential damages arising out of or in connection with use or performance of this product or other indirect damages with respect to loss of property, revenue, or profit, or cost of removal, installation, or reinstallation.** All implied warranties, including implied warranties for merchantability and implied warranties for fitness, are valid only until Warranty Expiration Date as labeled on the product. **This Linear LLC Warranty is in lieu of all other warranties express or implied.**

All products returned for warranty service require a Return Product Authorization Number (RPA#). Contact Linear Technical Service at 1-800-421-1587 for an RPA# and other important details.

IMPORTANT

Linear radio controls provide a reliable communications link and fill an important need in portable wireless signalling. However, there are some limitations which must be observed.

- For U.S. installations only: The radios are required to comply with FCC Rules and Regulations as Part 15 devices. As such, they have limited transmitter power and therefore limited range.
- A receiver cannot respond to more than one transmitted signal at a time and may be blocked by radio signals that occur on or near their operating frequencies, regardless of code settings.
- Changes or modifications to the device may void FCC compliance.
- Infrequently used radio links should be tested regularly to protect against undetected interference or fault.
- A general knowledge of radio and its vagaries should be gained prior to acting as a wholesale distributor or dealer, and these facts should be communicated to the ultimate users.

Free Manuals Download Website

<http://myh66.com>

<http://usermanuals.us>

<http://www.somanuals.com>

<http://www.4manuals.cc>

<http://www.manual-lib.com>

<http://www.404manual.com>

<http://www.luxmanual.com>

<http://aubethermostatmanual.com>

Golf course search by state

<http://golfingnear.com>

Email search by domain

<http://emailbydomain.com>

Auto manuals search

<http://auto.somanuals.com>

TV manuals search

<http://tv.somanuals.com>