

Features

Simple to Install -The DoorGard 212LS Lockset installs in 15 minutes and **programs the same as all DoorGard/IEI keypads**. It includes all mounting hardware, and easily retrofits into any standard cylindrical door prep (ANSI/BHMA A 156.2-2003). The 212LS has a replaceable core, for the manual key override. The sleek design fits with any décor and is available in 26D Stainless and US3 Polished Brass, right or left handed crescent door handles.

Right Hand

212LS – C26DCR-Rt - F/G: DoorGard Grade 2 Lockset/Cylindrical, Stainless, Crescent handle, Right handed.

212LS – CUS3CR-Rt - F/G: DoorGard Grade 2 Lockset/Cylindrical, Stainless, Crescent handle, Right handed.

Left Hand

212LS – C26DCR-Lt - F/G: DoorGard Grade 2 Lockset Cylindrical, Stainless, Crescent handle, Left handed.

212LS – CUS3CR-Lt - F/G: DoorGard Grade 2 Lockset Cylindrical, Stainless, Crescent handle, Left handed.

Easy to Maintain -Change the battery in three minutes. The 212LS Lockset uses four (4) 1.5V AA batteries for up to 15,000 uses or up to five years. An alarm activates Low Battery Alert allowing for 30 more uses.

User Codes - The 212LS lock recognizes up to 120 users with a different code for each, and the lockset retains codes without batteries. Codes can be one to six digits in length and digits can be repeated. The Master Code is always stored in user location one (1). A reset button is provided inside the lock which restores factory defaults and removes codes already stored. The lockset is equipped with an override mechanical key. The code toggles to allow passage for an event so any key will open the lock.

Security and Protection -The 212LS Lockset is designed with a safeguard against forced entry since the outside lever is not mechanically connected to the latch until the lock activates. Also, after three invalid code attempts, there is a 20 second lockout period for the keypad.

Rugged Design -The 212LS is designed for both commercial and industrial use.

Lockset Parts List

- | | |
|---------------------------------------|---|
| 1. Spanner wrench | 11. Interior Faceplate/Door Handle w/battery case |
| 2. T-Strike Door Latch 2-3/8" Backset | 12. Interior Faceplate |
| 3. T-Strike Door Latch 2-3/4" Backset | 13. Override Keys (2) |
| 4. Strike Plate | 14. Pin Wrench (pries open key slot cover) |
| 5. Strike Plate Cover | 15. Key Slot Cover |
| 6. Latch/Strikeplate Screws | 16. Screws: 2 sets Lock Assembly screws (thick, thin doors) |
| 7. Allen Wrench | 17. Sealing Washer |
| 8. Exterior Door Handle/keypad | 18. Faceplate Assembly Nut |
| 9. Exterior Gasket | |
| 10. Interior Gasket | |

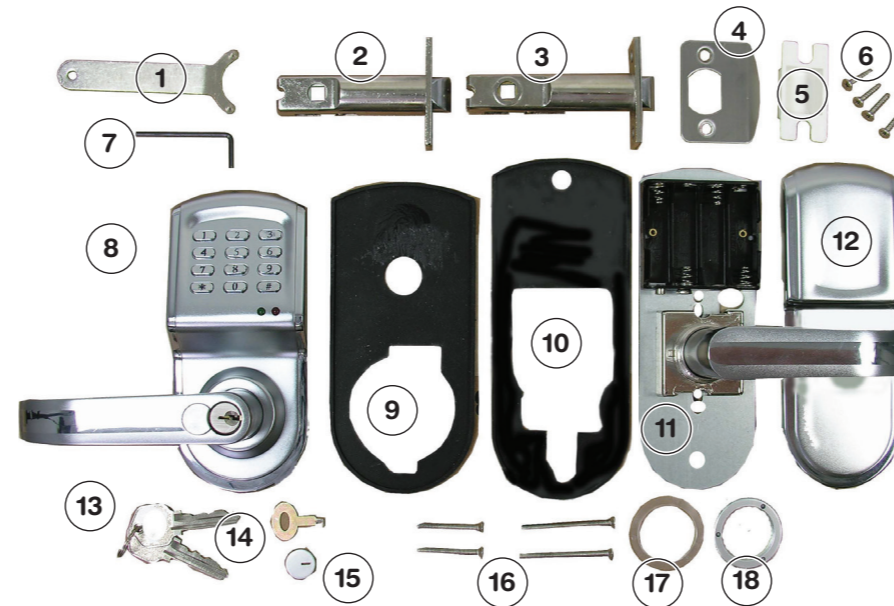


Figure 1. Parts Diagram

Download from www.Somanuals.com. All Manuals Search And Download.

Installation Steps

Door & Frame Prep

- Remove existing Lock from door
- If it is new door with no holes, use template provided
- Measure backset.

Installation

1. Unpack the lockset and inventory all parts. Remove mounting screws, separate lock assembly, and both interior/exterior handle plates and the two rubber gaskets.
2. Insert the strike plate hole cover (#5) and attach strike plate (#4) in the door jam/frame, securing with two Phillips head screws.
3. Install T-Strike Door Latch (#2 or #3) into doorjam/frame and secure with two Phillips head screws.
4. Assemble locks inserting two Rubber Gaskets (#8, 9, 10, 11).
5. Thread battery wires through hole in Interior Faceplate/Door Handle (#11).
6. Attach Interior Faceplate/Door Handle (#11) to Exterior Door Handle (#8), securing with two short or long assembly screws (#16)
7. Insert batteries and connect battery clip.
8. Secure Interior Faceplate (#12) with clear plastic washer with Nut (#17, 18)
9. Use spanner wrench (#1) to tighten nut (#15).
10. Program the system as described in this manual.
11. Instruct the users on lockset operation.

Manual Operation

- Use Pin Wrench (#14) to pull off cover (#15).
- Use override key (#13).
- Turn left twice.

Programming Steps

Default Master Code 1234

Maximum Number of Users per Lockset is 120

Change Master Code

1. Press **9 9 #**
2. Enter Master Code **1234**
3. Press ***** Green LED flashes
4. Press **1 #**
5. Enter NEW Master Code XXXXXX (1 to six digits)
6. Press *****
7. Enter New Master Code again
8. Press *** *** Green LED stops flashing

Add Users

1. Press **9 9 #**
2. Enter Master Code XXXXXX
3. Press ***** Green LED flashes
4. Enter User Number (3 -120)
5. Press **#**
6. Enter User Code (1 to 6 digits)
7. Press ***** Green LED stops flashing
8. Enter User Code again
9. Press *** ***

Delete Users

1. Press **9 9 #**
2. Enter Master Code XXXXXX
3. Press ***** Green LED flashes
4. Enter User Number (3 -120)
5. Press **#**
6. Press *** * *** Green LED stops flashing

Enable any Key Access

1. Press **9 9 #**
2. Enter Master Code *** # # # # # # # #**
3. Press any key to activate lock

Disable any Key Access

1. Press *** 9 9 #**
2. Enter Master Code *** # # # # # # # #**
3. Code Required to Activate Lock

Specifications

- Programs the SAME as all DoorGard/IEI Keypads
- Temperature Rating: -30 to 70C, -22 to 158F
- Battery Life up to 15,000 uses or UP to FIVE years
- Powered by 4 AA Alkaline Batteries, Batteries NOT included
- Grade 2 Lockset ANSI 151.8 Medium
- Commercially Rated
- Interchangeable United States Standard Core
- Left and Right Handle Models Available
- Colors:
 - 26D Stainless Steel and US3 Polished Brass Finishes

DOOR•GARD®

Linear Limited Warranty

This Linear product is warranted against defects in material and workmanship for twenty four (24) months. This warranty extends only to wholesale customers who buy direct from Linear or through Linear's normal distribution channels. Linear does not warrant this product to consumers. Consumers should inquire from their selling dealer as to the nature of the dealer's warranty, if any. **There are no obligations or liabilities on the part of Linear LLC for consequential damages arising out of or in connection with use or performance of this product or other indirect damages with respect to loss of property, revenue, or profit, or cost of removal, installation, or reinstallation.** All implied warranties, including implied warranties for merchantability and implied warranties for fitness, are valid only until the warranty expires. **This Linear LLC Warranty is in lieu of all other warranties express or implied.** All products returned for warranty service require a Return Product Authorization Number (RPA#). Contact Linear Technical Services at 1-800-421-1587 for an RPA# and other important details.

Download from www.Somanuals.com. All Manuals Search And Download.

DOOR•GARD®

212LS Electronic Access Control Cylindrical Lockset Installation & Programming Guide



USA & Canada (800) 421-1587 & (800) 392-0123
(760) 438-7000 - Toll Free FAX (800) 468-1340

www.linearcorp.com

Free Manuals Download Website

<http://myh66.com>

<http://usermanuals.us>

<http://www.somanuals.com>

<http://www.4manuals.cc>

<http://www.manual-lib.com>

<http://www.404manual.com>

<http://www.luxmanual.com>

<http://aubethermostatmanual.com>

Golf course search by state

<http://golfingnear.com>

Email search by domain

<http://emailbydomain.com>

Auto manuals search

<http://auto.somanuals.com>

TV manuals search

<http://tv.somanuals.com>