

USER MANUAL



mCAM™

LOREX®



www.lorexcctv.com



Under the copyright laws, this documentation may not be copied, photocopied, reproduced, translated, or reduced to any electronic medium or machine readable form, in whole or part without the prior written consent of Lorex Technology Inc., except in the manner described in the documentation.

© Copyright 2006. Lorex Technology Inc., 300 Alden Road, Markham, Ontario, Canada L3R 4C1

Document Revision 3.0_SG21CD7444UQ-A80_mCAM_Manual_V1

FCC COMPLIANCE

FC This equipment has been tested and found to comply with the limits for a class B digital device, pursuant to Part 15 of the FCC rules. These limits are designed to provide reasonable protection against harmful interference in a residential installation. This equipment generates, uses and can radiate radio frequency energy and, if not installed and used in accordance with the instructions, may cause harmful interference to radio communication. However there is no guarantee that interference will not occur in a particular installation. If this equipment does cause harmful interference to radio or television reception, which can be determined by turning the equipment off and on, the user is encouraged to try to correct the interference by one or more of the following measures:

- Reorient or relocate the receiving antenna increases the separation between the equipment and receiver
- Connect the equipment into an outlet on a circuit different from that to which the receiver is connected
- Consult the dealer or an experienced radio or television technician for help.

This device complies with Part 15 of the FCC rules. Operation is subject to the following two conditions:

1. This device may not cause harmful interference, and
2. This device must accept any interference received, including interference that may cause undesired operation

This digital apparatus does not exceed the Class B limits for radio noise emissions from digital apparatus set out in the Radio Interference Regulations of the Canadian Department of Communications.

ALWAYS USE DISCRETION WHEN INSTALLING VIDEO AND AUDIO SURVEILLANCE EQUIPMENT ESPECIALLY WHEN THERE IS PERCEIVED PRIVACY. INQUIRE REGARDING FEDERAL, STATE AND OR LOCAL REGULATIONS APPLICABLE TO THE LAWFUL INSTALLATION OF VIDEO AND OR AUDIO RECORDING OR SURVEILLANCE. PARTY CONSENT MAY BE REQUIRED

Current rating per camera should not exceed 300mA if on board power from the video capture device is used.

ABOUT THIS MANUAL

This manual is designed to provide you with in depth instruction for the use of mCAM products. We recognize that most functions and features of mCAM hardware and the mCAM software are intuitive by design. However, for functions and features that are not perfectly clear we have developed a couple of icons to convey important information or instruction to you. The icons you will see throughout this manual are as follows:



INFO – Provides additional information about a feature or function to help you understand our products better.



WARNING – Provides information on features and functions that may depend on other factors or yield unexpected results.

TABLE OF CONTENTS

<p>1 Software Installation 2 – 4</p> <hr/> <p>2 Setting up the Hardware 5</p> <hr/> <p>3 Using the mCAM Application</p> <p> Main Menu 6 – 7</p> <p> <i>Set Start Page</i></p> <p> Local Surveillance 8</p> <p> <i>Play/Stop Video</i></p> <p> <i>Mute/Unmute Volume</i></p> <p> <i>Record Video</i></p> <p> <i>Take Snapshots</i></p> <p> Select Device 9</p> <p> <i>Select Video Device</i></p> <p> <i>Select Audio Device</i></p> <p> Archive 10 – 11</p> <p> <i>Search Archive</i></p> <p> <i>View Recordings and Snapshots</i></p>	<p>Motion Detection 12 – 13</p> <p> <i>Set Days and Time</i></p> <p> <i>Set Actions</i></p> <p> <i>Set Sensitivity</i></p> <p>Scheduled Events 14 – 15</p> <p> <i>Set Days and Time</i></p> <p> <i>Set Actions</i></p> <p>Preferences 16</p> <p> <i>Delete Recordings</i></p> <p> <i>Delete Snapshots</i></p> <p> <i>Email</i></p> <p> <i>Set Start Page</i></p> <p>Select Language 17</p> <p>About 18</p> <hr/> <p>4 Remote Surveillance 19</p>
--	--

SOFTWARE INSTALLATION

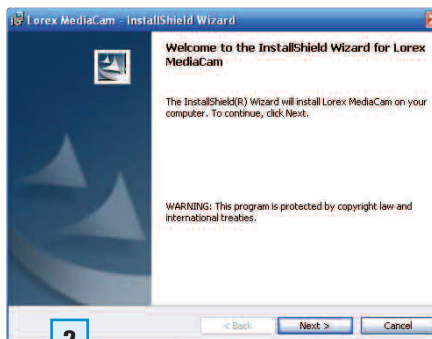


This section will show you how to install the mCAM Application onto your computer.



Insert the mCAM application software CD into your computer's CD-Rom drive.

The CD will automatically start the installation program. Follow the on-screen prompts.



If the CD does not start the installation automatically:



Open My Computer



Double-Click on your CD-Rom Icon

Double-Click on Setup.exe

2

SETTING UP THE HARDWARE



Installation Procedure – This section will show you how to connect your computer to the Monitor.

MAKE SURE TO LEAVE THE SOFTWARE CD IN THE CD ROM DRIVE.



Back of the 21" Monitor



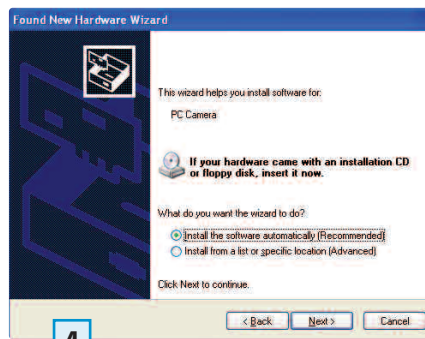
Back of a computer (not included)

Connect one end of the USB Cable (included) to the monitor, the other end to the computer.

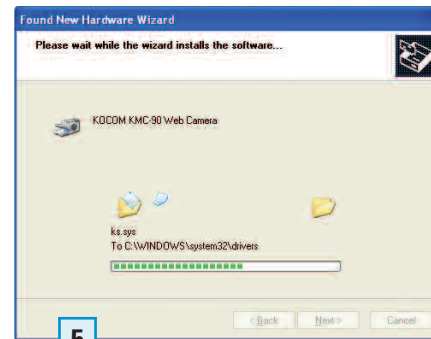
Follow the steps below to complete the installation of the Drivers.



3



4



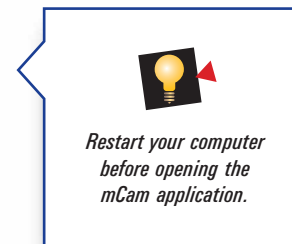
5



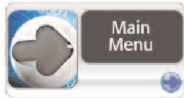
6



7



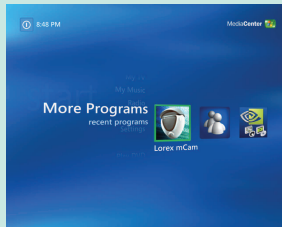
3 USING THE mCAM APPLICATION



This section will familiarize you the mCAM Software application.

OR

1A For Systems with MediaCenter



B Open MediaCenter

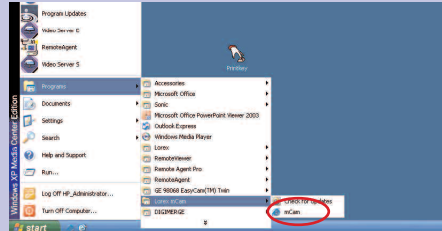


Select the mCAM icon to open the mCAM Application.



Select the arrow keys to view more menu items.

2A For Systems using WindowsXP



Select Start ---> All Programs ---> Lorex mCAM
---> mCAM to access the Main Menu

B Open MediaCenter



Select the mCAM icon to open the mCAM Application.



Select the arrow keys to view more menu items.



Use the arrow keys and the OK button on your remote control to navigate and select functions.

3

USING THE mCAM APPLICATION



This page is where you can view live video from your mCAM.



Press to Play live video.
Press to Stop live video.



Press to Mute the volume.
Press to Unmute the volume.



Press to record live video.
Press to stop recording.



Press to take a picture of the live video at any given instant.



Press to broadcast live video
Press to Stop broadcasting live video.

** Refer to Remote Surveillance section (page 19) in this manual.*



Video must be playing in the Local Surveillance window for Motion Detection and Scheduled Events to function.



You must use the arrows and the OK button on your remote to select Play, Stop, Mute and Record.



If the video screen is flashing, the software is detecting motion.



This page allows you to select the video and audio device you want to monitor.

Select Video Device

Select the camera you wish to monitor.

Select Audio Device

Select the audio device you wish to monitor.

Save Changes

Save your changes before leaving this page.



Only video and audio devices plugged in will be displayed.



Local Surveillance will use the video and audio devices selected here.

3

USING THE mCAM APPLICATION



This page allows you to retrieve previously saved recordings and snapshots.

1

Specify and Search

Set search criteria, by specifying year, month and day.
Select Recordings or Snapshots.

Search Archive

Press the Search Archive button.

2

Select Item

Select the item you wish to view.



Press the arrows to view more archived items.

View

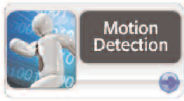
Delete

Select to view or delete items in the archive.



Selecting ALL for the Year will search the archive for items created in that year. Selecting ALL for Month will search the archive for items created in that month for the year specified. Selecting ALL for the Day will search the archive for items created on that day in the month and year specified.

3 USING THE mCAM APPLICATION



This page will help you setup your camera to record video and take snapshots automatically based on movement within your camera's field of view.

1 Set Days

Select which days of the week mCAM will monitor for motion.

2 Set Time

Select the time range mCAM will monitor for motion on the days selected above.

3 Next

Save Changes

Save your changes before leaving this page.

Motion Detection

1 Set Days Mon Tue Wed Thu Fri Sat Sun

2 Set Time Start 12 : 00 am pm End 12 : 00 am pm

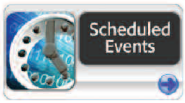
3 Next Save Changes Set Actions Set Sensitivity

LOREX MediaCam Local Surveillance Archive Motion Detection



Motion detection is turned on only if at least one day is selected.

3 USING THE mCAM APPLICATION



This page will help you set up the mCAM application to record video or take snapshots based on certain days at specific times.

1 Set Days

Select which days of the week mCAM will schedule an event.

2 Set Time


Set the time of the selected days you would like the event to start.


3 next

Save Changes

Save your changes before leaving this page.

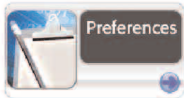


 Scheduled Events are turned on only if at least one day is selected.

 Video will record at the time specified.

3

USING THE mCAM APPLICATION



This page is where you may setup system wide mCAM Application parameters.

Delete Recordings

Select the recordings to be purged from the recordings archive by age. Select Save Changes to purge the recordings archive.

Delete Snapshots

Select the snapshots to be purged from the snapshots archive by age. Select Save Changes to purge the snapshots archive.

Email/SMTP

Enter your local email address.
Enter your outgoing mail (SMTP) server address.

Username/Password

Enter the logon information for your outbound SMTP email server.

Save Changes

Save your changes.



The Email and SMTP addresses as well as the Username and Password is the same information you enter when you configure email applications for outbound email such as Outlook or Outlook Express.



You can return to the Preferences page at any time to purge the archive of unwanted items.

3 USING THE mCAM APPLICATION



This page provides our phone numbers and your software version.



If you call technical support you will need your software version number.

4 REMOTE SURVEILLANCE



This section will familiarize you with using Windows Media Player to remotely view your camera.

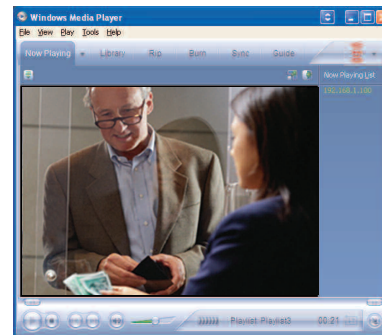
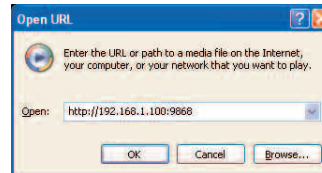
ON YOUR LOCAL COMPUTER IN THE LOCAL SURVEILLANCE SCREEN (the computer running the mCAM application)

1 Press the Broadcast Button



Note: Do not close the Local Surveillance Screen as this will disconnect the broadcasting.

4 Enter the URL - `http://a.b.c.d:9868` - where a.b.c.d is the IP address of the computer running the mCAM application.

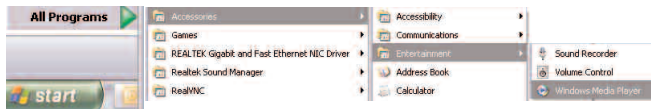


For detailed information about determining your IP address, configuring your router, and port forwarding, please visit our website www.lorex-cctv.com and click Consumer Guides Section to view [Guide on Port Forwarding a Router](#)

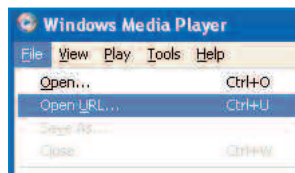
ON YOUR REMOTE COMPUTER

2 Open Windows Media Player

(click Start/All Programs/Accessories/Entertainment/Windows Media Player)



3 From Windows Media Player screen, select menu item File --> Open URL.





www.lorexcctv.com

Lorex Technology Inc.
300 Alden Road, Markham, Ontario, Canada L3R 4C1

Lorex Corporation.
3700 Koppers Street, Suite 504, Baltimore, Maryland, 21227



Free Manuals Download Website

<http://myh66.com>

<http://usermanuals.us>

<http://www.somanuals.com>

<http://www.4manuals.cc>

<http://www.manual-lib.com>

<http://www.404manual.com>

<http://www.luxmanual.com>

<http://aubethermostatmanual.com>

Golf course search by state

<http://golfingnear.com>

Email search by domain

<http://emailbydomain.com>

Auto manuals search

<http://auto.somanuals.com>

TV manuals search

<http://tv.somanuals.com>