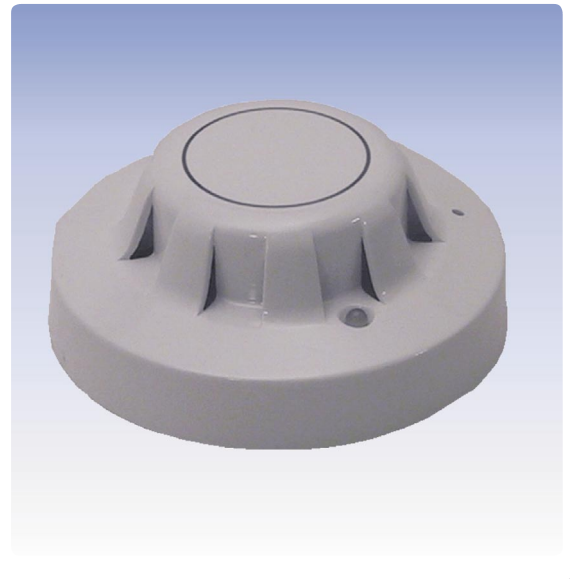


Carbon Monoxide Detector

AC-58000-300

- **ADM loop technology with Apollo/Discovery protocol**
- **Ideal supplement to common smoke detectors**
- **Sensitivity selectable in 5 steps**
- **Optional connection of remote indicator**
- **Sealed electronics**



Description

The Carbon Monoxide Detector AC-58000-300 uses a durable electrochemical CO sensor. It is an ideal supplement to common smoke detectors because it is insensitive to the usual vapors and household products, in low concentrations. The carbon monoxide detector does not respond to smoke particles and heat, and therefore it shall only be used in addition to smoke or heat detectors. Besides, the size of the fire area shall not exceed 50m².

The proven ADM loop technology with Apollo/Discovery protocol establishes a permanent communication bet-

ween the fire detection control panel and the detector. That ensures a periodical function testing of the detector.

The two LEDs with 360° visibility indicate the activated condition of the detector. The detector address is selected by means of a code card in the detector base. Therefore the detector can be changed without additional tools.

The detector can be attached to different types of bases, and it can be protected against theft.

Specifications

Operating voltage	Supply through loop voltage
Current consumption	typ. 400µA (quiescent)
Ambient temperature	0°C to +40°C (no condensation)
Relative humidity	15 – 90% (no condensation)
Dimensions ø × H	100 × 42 (mm)
Colour	white
Weight	105g
Order number	243100
Order name	CO-Detector/Anal./Disc/Apo AC-58000-300

Free Manuals Download Website

<http://myh66.com>

<http://usermanuals.us>

<http://www.somanuals.com>

<http://www.4manuals.cc>

<http://www.manual-lib.com>

<http://www.404manual.com>

<http://www.luxmanual.com>

<http://aubethermostatmanual.com>

Golf course search by state

<http://golfingnear.com>

Email search by domain

<http://emailbydomain.com>

Auto manuals search

<http://auto.somanuals.com>

TV manuals search

<http://tv.somanuals.com>