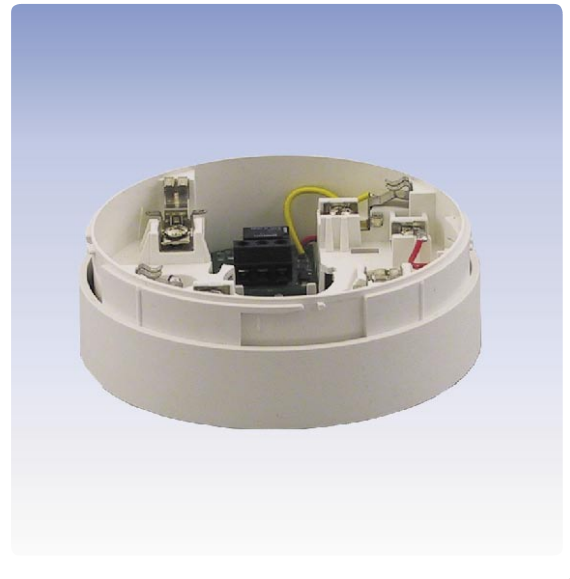


Detector Relay Base

ECO1000BREL24L

- **Suitable for automatic detectors in conventional technology**
- **Relay output with dry change-over contact**
- **Screw terminals for secure connection of multiple wires**
- **Test contact for examining the detector line without detectors**
- **Mechanical theft protection can be activated**



Description

The Detector Relay Base ECO1000BREL24L with integrated relay output is designed for the easy connection of automatic detectors Series ECO1000. Due to its robust multi-wire screw terminals, the detectors can be wired with ease, thus achieving a secure and durable connection.

The relay output is activated through the alarm activation of the inserted detector and remains active until the alarm is reset on the fire detection control panel. The application has to comply with the guidelines in the LST Connection of Detectors.

During construction work (or when the detector has been removed) the detector line can be connected through via an auxiliary contact, which is integrated into the base. With that, the whole wiring of the detector line can be examined without risking contamination of the detectors. The contact is automatically opened by installing the detector.

The base is designed for surface mounting in dry rooms. A mechanical theft protection of the detector can optionally be activated at the detector base.

Specifications

Operating voltage	Supply through the detector line voltage
Current consumption	1µA (quiescent), 30mA (active)
Contact rating	1A at 30VDC
Ambient temperature	-30°C to +70°C
Relative humidity	5 – 93% (no condensation)
Dimensions ø × H	102.5 × 33 (mm)
Colour	white
Weight	70g
Order number	246141
Order name	Detector Relay Base/Conv./1000/SS ECO1000BREL24L

Building Safety. Building Security.

Free Manuals Download Website

<http://myh66.com>

<http://usermanuals.us>

<http://www.somanuals.com>

<http://www.4manuals.cc>

<http://www.manual-lib.com>

<http://www.404manual.com>

<http://www.luxmanual.com>

<http://aubethermostatmanual.com>

Golf course search by state

<http://golfingnear.com>

Email search by domain

<http://emailbydomain.com>

Auto manuals search

<http://auto.somanuals.com>

TV manuals search

<http://tv.somanuals.com>