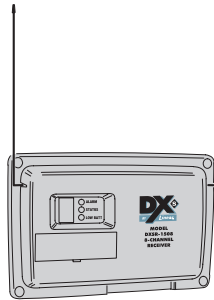


DXSR-1504/EC DXSR-1508/EC

SUPERVISED DIGITAL RECEIVERS

Installation Instructions



Linear[®]

(760) 438-7000 • FAX (760) 438-7043
www.linearcorp.com

PRODUCT DESCRIPTION

The DXSR-1504/EC and DXSR-1508/EC are four and eight channel supervised digital receivers with solid state outputs designed for use with Linear's DX and DXS Format /EC transmitters. These receivers can be used in a variety of security and remote control applications. When the receiver detects a signal from a transmitter programmed into its memory, the appropriate channel output activates. The channel outputs have three optional configurations; 3/4 second momentary, toggle on/off, and latch until restored. Status and low battery outputs are for supervisory indications. Cutting jumpers select which channels require supervisory status reports from transmitters.

Each unit incorporates a high-sensitivity superheterodyne diversity receiver with two whip antennas. This type of receiver provides superior performance by preventing loss of signal due to multi-path interference.

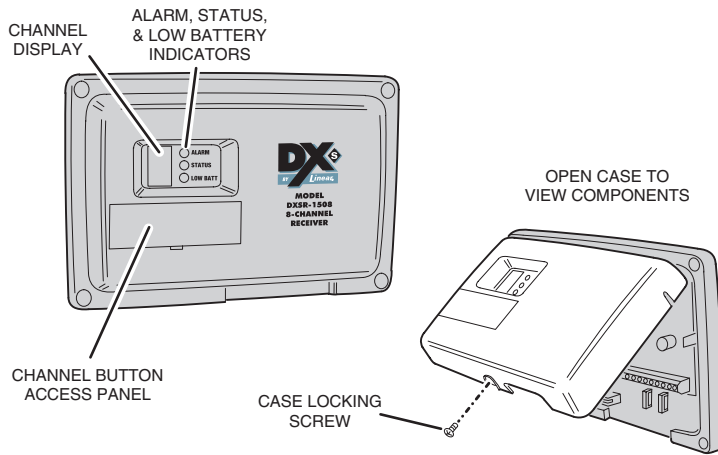
In a typical installation, the receiver is connected to an alarm control panel, door strike, camera, high current relay or some other devices. Transmitters are used to activate or control the devices. The receiver should be mounted indoors or inside a weather resistant *non-metallic* housing for outdoor use.

The digital DX/DXS code format features over a million possible codes. The transmitters are precoded at the factory to unique codes, so no field coding is required. For versatility, *any transmitter can be programmed into any receiver channel*. Receivers must be programmed to recognize the transmitter's code before system testing and operation. Up to 32 transmitters can be programmed into the receiver. Each button on multi-button portable transmitters send a unique code, and are programmed as separate transmitters.

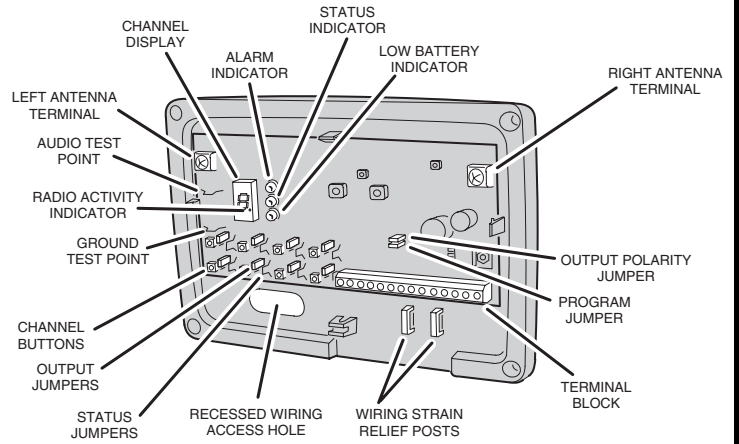
The CHANNEL display shows the channels activated and the presence of radio activity. Individual indicators for ALARM, STATUS, and LOW BATT show the supervisory status of each receiver channel. All outputs can be configured for normally open or normally closed.

The units can be powered from a 10.2-14.4 VDC or 12-16 VAC power source. The units will draw about 35 mA standby and up to 120 mA in alarm.

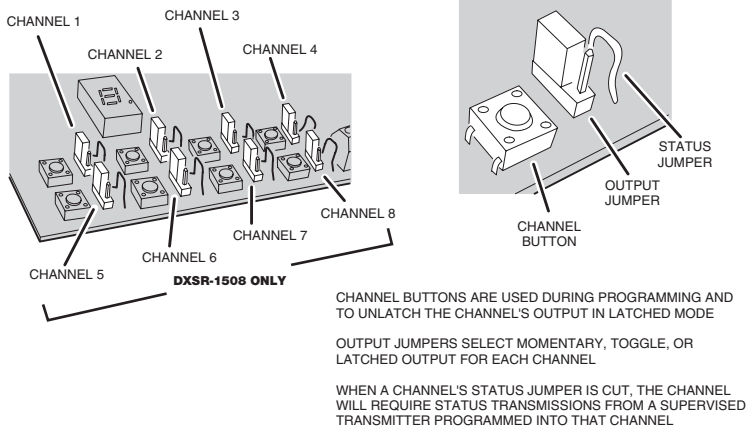
FEATURES



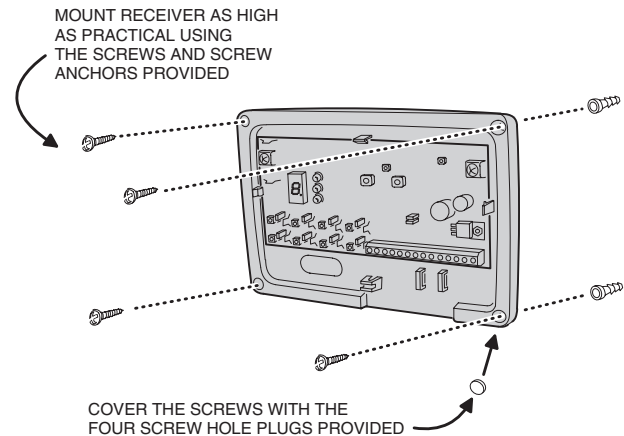
COMPONENT LOCATIONS



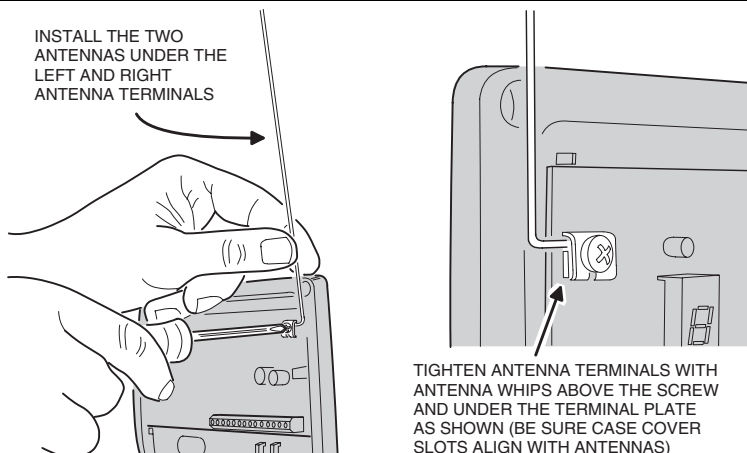
OPTION JUMPERS AND CHANNEL BUTTONS DETAIL



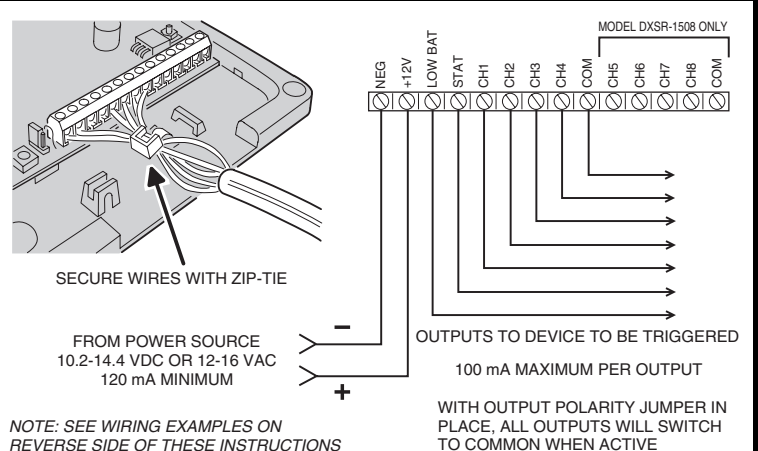
MOUNT RECEIVER



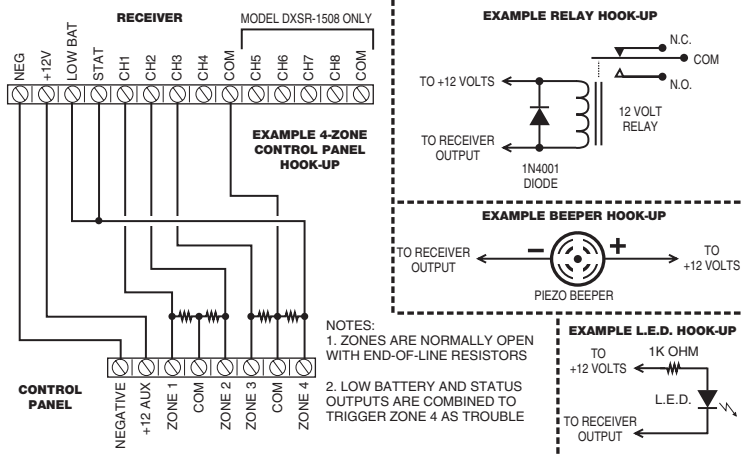
ATTACH ANTENNAS



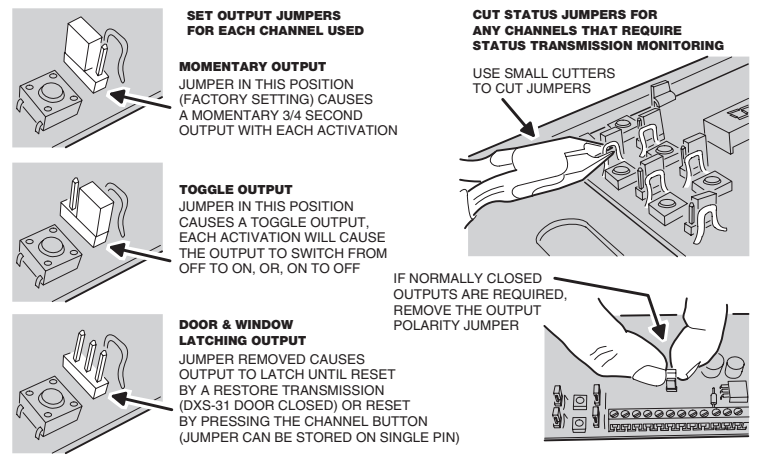
CONNECT TERMINALS



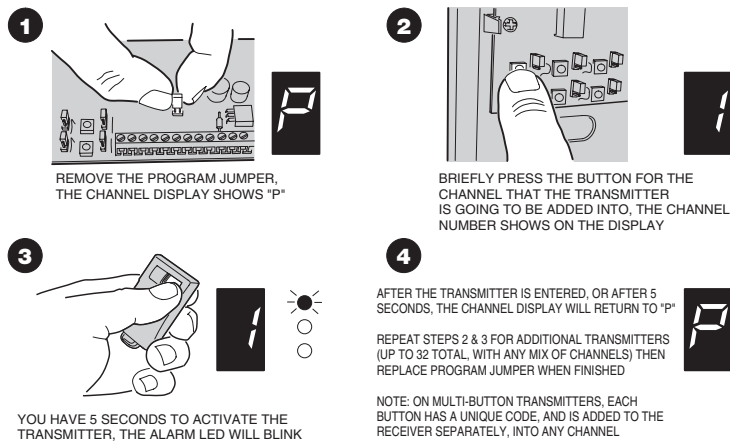
WIRING EXAMPLES



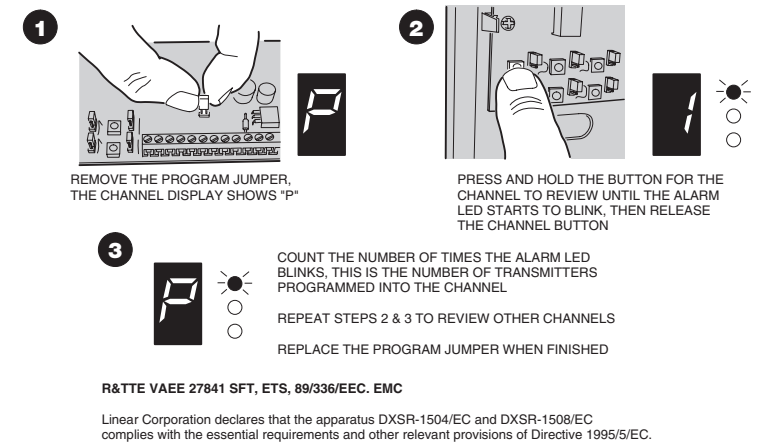
SELECT OPTIONS



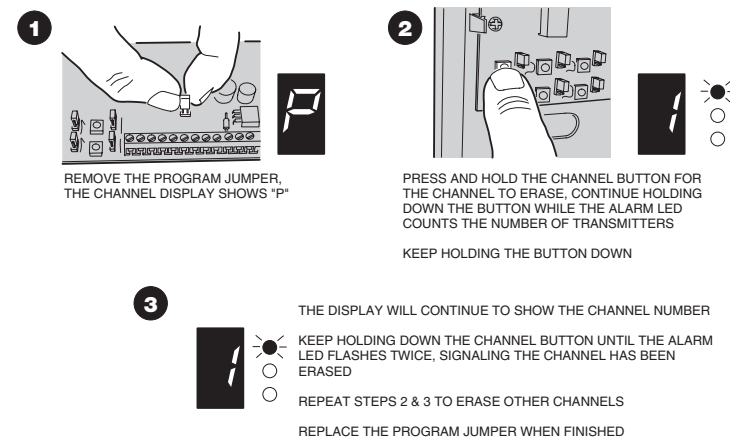
ADDING TRANSMITTERS



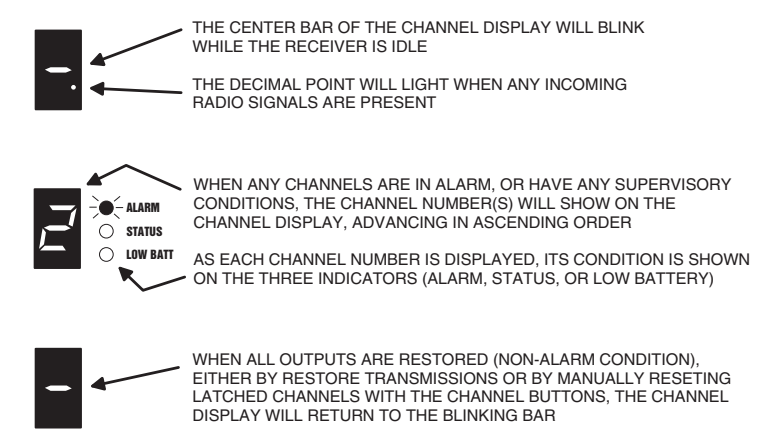
REVIEWING MEMORY



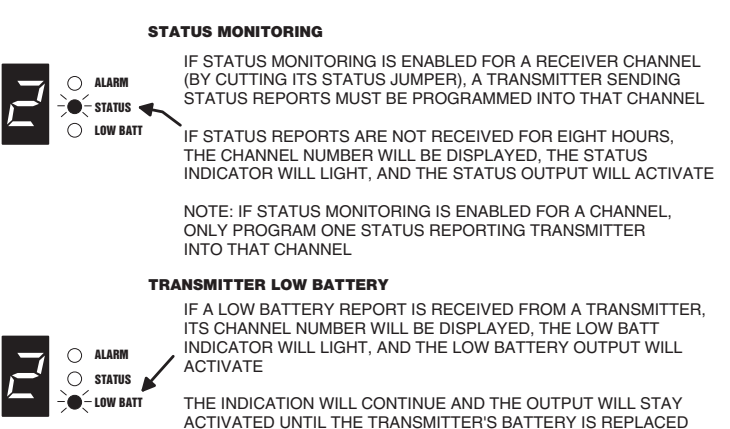
REMOVING TRANSMITTERS



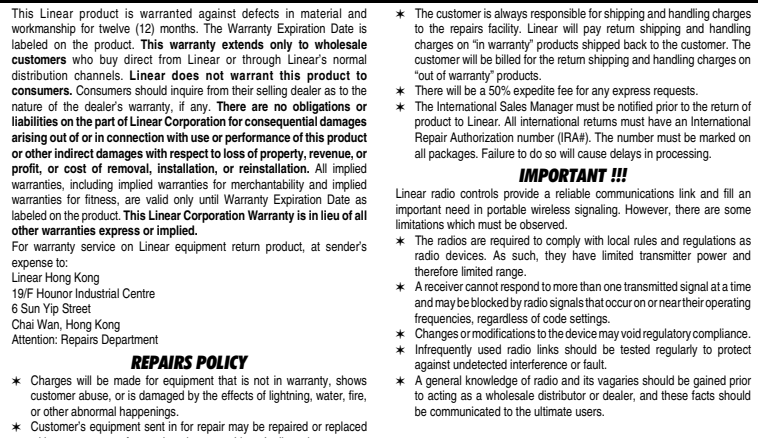
SYSTEM OPERATION



SUPERVISORY CONDITIONS



INTERNATIONAL WARRANTY



Free Manuals Download Website

<http://myh66.com>

<http://usermanuals.us>

<http://www.somanuals.com>

<http://www.4manuals.cc>

<http://www.manual-lib.com>

<http://www.404manual.com>

<http://www.luxmanual.com>

<http://aubethermostatmanual.com>

Golf course search by state

<http://golfingnear.com>

Email search by domain

<http://emailbydomain.com>

Auto manuals search

<http://auto.somanuals.com>

TV manuals search

<http://tv.somanuals.com>