

# LINKSYS®

A Division of Cisco Systems, Inc.



## 2.4GHz 802.11b Wireless-B

# Internet Video Camera User Guide



Model No. **WVC11B**



## Copyright and Trademarks

Specifications are subject to change without notice. Linksys is a registered trademark or trademark of Cisco Systems, Inc. and/or its affiliates in the U.S. and certain other countries. Copyright © 2003 Cisco Systems, Inc. All rights reserved. Other brands and product names are trademarks or registered trademarks of their respective holders.

## How to Use this Guide

Your guide to the Wireless-B Internet Video Camera has been designed to make understanding networking with the Camera easier than ever. Look for the following items when reading this guide:



This checkmark means there is a Note of interest and is something you should pay special attention to while using the Camera.



This exclamation point means there is a Caution or warning and is something that could damage your property or the Camera.



This question mark provides you with a reminder about something you might need to do while using the Camera.

In addition to these symbols, there are definitions for technical terms that are presented like this:

***word: definition.***

Also, each figure (diagram, screenshot, or other image) is provided with a figure number and description, like this:

### **Figure 0-1: Sample Figure Description**

Figure numbers and descriptions can also be found in the “List of Figures” section in the “Table of Contents”.

# Table of Contents

Chapter 1: Introduction	1
Welcome	1
What's in this Guide?	2
Chapter 2: Planning Your Wireless Network	4
Introduction	4
Ad-Hoc and Infrastructure Modes	4
Network Layout	4
Chapter 3: Getting to Know the Wireless-B Internet Video Camera	6
Camera LEDs	6
Camera Head	6
Camera Ports	7
Chapter 4: Connecting the Wireless-B Internet Video Camera for Setup	8
Overview	8
Connection to a Wired Network for Setup	8
Connection to a Wireless Ad-Hoc Network for Setup	8
Moving the Camera to a Different Network	9
Chapter 5: Setting up and Mounting the Wireless-B Internet Video Camera	10
Setup Wizard	10
Placement Options	16
Chapter 6: Installing and Using the Wireless-B Internet Video Camera Viewer & Recorder Utility	17
Overview	17
Installing the Viewer & Recorder Utility	17
Using the Viewer & Recorder Utility	19
Chapter 7: Setting up the Linksys SoloLink™ DDNS Service	28
Overview	28
Introduction	28
Setup Wizard for the SoloLink DDNS Service	28
SoloLink Registration of Additional Cameras	38
Chapter 8: Using The Wireless-B Internet Video Camera's Web-based Utility	40
Overview	40
How to Access the Web-based Utility	40

View Video	40
Setup	41
Help	52
<b>Appendix A: Troubleshooting</b>	<b>54</b>
Common Problems and Solutions	54
Frequently Asked Questions	56
<b>Appendix B: Wireless Security</b>	<b>58</b>
A Brief Overview	58
What Are The Risks?	58
<b>Appendix C: Upgrading Firmware</b>	<b>65</b>
<b>Appendix D: Windows Help</b>	<b>66</b>
<b>Appendix E: Glossary</b>	<b>67</b>
<b>Appendix F: Specifications</b>	<b>73</b>
<b>Appendix G: Warranty Information</b>	<b>74</b>
<b>Appendix H: Regulatory Information</b>	<b>75</b>
<b>Appendix I: Contact Information</b>	<b>80</b>

# List of Figures

Figure 3-1: Camera LEDs	6
Figure 3-2: Camera Head	6
Figure 3-3: Camera Ports	7
Figure 4-1: Connect the Ethernet Network Cable	8
Figure 4-2: Connect the Power Adapter	8
Figure 5-1: Welcome	10
Figure 5-2: Connection for Setup	10
Figure 5-3: Cameras Found	11
Figure 5-4: Administrator Name and Password	11
Figure 5-5: Basic Settings	11
Figure 5-6: DHCP or Static IP Address	12
Figure 5-7: IP Settings	12
Figure 5-8: Mode Settings	13
Figure 5-9: Basic Settings (Wireless)	13
Figure 5-10: Security Settings	14
Figure 5-11: Security Settings (WEP Key)	14
Figure 5-12: Review New Settings	15
Figure 5-13: Congratulations	15
Figure 5-14: Stand Option	16
Figure 5-15: Wall Mount Option	16
Figure 6-1: Install Viewer & Recorder Utility	17
Figure 6-2: Install Viewer & Recorder Utility Welcome	17
Figure 6-3: Choose Destination Location	18
Figure 6-4: Select Program Folder	18
Figure 6-5: OCX Plug-in	18
Figure 6-6: Setup Complete	18
Figure 6-7: Viewer & Recorder Utility Icon	19
Figure 6-8: Main Screen	19

Figure 6-9: Find Camera from LAN	20
Figure 6-10: Find Camera from Internet	21
Figure 6-11: Change Settings	21
Figure 6-12: Delete Camera	22
Figure 6-13: View Video	23
Figure 6-14: Recording Icon	23
Figure 6-15: Scheduled Recordings in Progress	24
Figure 6-16: Files	24
Figure 6-17: Preferences	25
Figure 6-18: Recording Schedule	25
Figure 6-19: Add to Recording Schedule	26
Figure 6-20: Modify Scheduled Recording	26
Figure 6-21: Stop Scheduled Recording	27
Figure 6-22: View Video	27
Figure 7-1: SoloLink Service	28
Figure 7-2: Welcome	28
Figure 7-3: SoloLink for Dynamic IP Address	29
Figure 7-4: SoloLink for Convenience	29
Figure 7-5: Check Connections	30
Figure 7-6: Cameras Found	30
Figure 7-7: User Name and Password Login	31
Figure 7-8: SoloLink DDNS	31
Figure 7-9: Confirm Active Internet Connection	32
Figure 7-10: Welcome to the SoloLink DDNS Service	32
Figure 7-11: Sign Up	33
Figure 7-12: Confirmation of New Settings	34
Figure 7-13: Select a Location ID	34
Figure 7-14: Confirm Your Location ID	35
Figure 7-15: Payment	35
Figure 7-16: Verification	35

Figure 7-17: Create Links	36
Figure 7-18: Successful Registration	36
Figure 7-19: Account Confirmation of Camera	37
Figure 7-20: Successful Setup	37
Figure 7-21: Port Forwarding Information	38
Figure 7-22: Web-based Utility Welcome	38
Figure 7-23: User Name and Password	38
Figure 7-24: SoloLink DDNS	39
Figure 8-1: Camera's Default IP Address	40
Figure 8-2: Web-based Utility Welcome	40
Figure 8-3: Security Warning	41
Figure 8-4: User Name and Password	41
Figure 8-5: Basic	42
Figure 8-6: WEP Key Settings	43
Figure 8-7: Image	44
Figure 8-8: Password	45
Figure 8-9: Users	46
Figure 8-10: Add/Modify User	46
Figure 8-11: SoloLink DDNS	47
Figure 8-12: New User Registration	47
Figure 8-13: Password Request	48
Figure 8-14: Manage Your SoloLink DDNS Account	48
Figure 8-15: Device Removal	48
Figure 8-16: Status	50
Figure 8-17: Advanced	51
Figure 8-18: Administrator Help	52
Figure 8-19: Upgrade Firmware	53
Figure B-1: Warchalking	58
Figure B-2: WEP Key Settings	64
Figure C-1: Upgrade Firmware	65

# Chapter 1: Introduction

## Welcome

Thank you for choosing the Linksys Wireless-B Internet Video Camera. This Camera sends live video through the Internet to a web browser anywhere in the world! This compact, self-contained unit lets you keep an eye on your home, your kids, your workplace—whatever's important to you.

How does the Camera do all of this? Unlike standard "web cams" that require an attached PC, the Internet Video Camera contains its own web server, so it can connect directly to a network, either over Wireless-B (802.11b) networking, or over 10/100 Ethernet cable. The advanced MPEG-4 video compression produces a high-quality, high-framerate, 320 x 240 video stream.

The Internet Video Camera's unique form-factor and wireless connectivity allows you to mount it on a wall nearly anywhere, or slip it into its included stand for desktop use. Once it's connected to your home network, you can "see what it sees" from any PC in the house, while the video stream is secured from the outside world, hidden behind your Router. If you want the video to be visible from outside your home network, you can open an appropriate port on the Router, and then create password-protected accounts to manage access to the Camera, or leave it wide open for the world to see. The SoloLink DDNS Service (trial sign-up included) lets you access your Camera using an easy-to-remember "name", even if your home Internet connection uses a dynamic IP address.

You can also turn on Security Mode, which tells the Camera to send you an e-mail message with a short video attached whenever it detects motion in its field of view. You can then log onto the live video stream if the situation warrants. The included Viewer & Recorder utility lets you record the video stream to your local hard drive, "live" or on a predetermined schedule.

Use the instructions in this Guide to help you integrate the Camera into your network. These instructions should be all you need to get the most out of the Wireless-B Internet Video Camera.

**802.11b:** an IEEE wireless networking standard that specifies a maximum data transfer rate of 11Mbps and an operating frequency of 2.4GHz.

**Ethernet:** an IEEE standard network protocol that specifies how data is placed on and retrieved from a common transmission medium.



## What's in this Guide?

This user guide covers the steps for setting up and using the Wireless-B Internet Video Camera.

- **Chapter 1: Introduction**  
This chapter describes the Camera's applications and this User Guide.
- **Chapter 2: Planning Your Wireless Network**  
This chapter discusses a few of the basics about wireless networking.
- **Chapter 3: Getting to Know the Wireless-B Internet Video Camera**  
This chapter describes the physical features of the Camera.
- **Chapter 4: Connecting the Wireless-B Internet Video Camera**  
This chapter instructs you on how to connect the Camera to your network before you run the Setup Wizard.
- **Chapter 5: Setting up and Mounting the Wireless-B Internet Video Camera**  
This chapter instructs you on how to use the Setup Wizard for setup and configuration of the Adapter, as well as how to mount the Camera.
- **Chapter 6: Installing and Using the Wireless-B Internet Video Camera Utility**  
This chapter explains how to install and use the Wireless-B Internet Video Camera Utility on your PC, so you can view and record video.
- **Chapter 7: Setting up the Linksys SoloLink™ DDNS Service**  
This chapter discusses the advantages of the SoloLink DDNS Service and walks you through the setup procedure.
- **Chapter 8: Using the Wireless-B Internet Video Camera Web-based Utility**  
This chapter describes the Web-based Utility and the features available, so you can use and alter advanced configuration settings.
- **Appendix A: Troubleshooting**  
This appendix describes some problems and solutions, as well as frequently asked questions, regarding installation and use of the Adapter.
- **Appendix B: Wireless Security**  
This appendix discusses security issues regarding wireless networking and measures you can take to help protect your wireless network.

## Wireless-B Internet Video Camera

- **Appendix C: Upgrading Firmware**  
This appendix explains how you can upgrade the Camera's firmware.
- **Appendix D: Windows Help**  
This appendix describes how you can use Windows Help for instructions about networking, such as installing the TCP/IP protocol.
- **Appendix E: Glossary**  
This appendix gives a brief glossary of terms frequently used in networking.
- **Appendix F: Specifications**  
This appendix provides the technical specifications for the Camera.
- **Appendix G: Warranty Information**  
This appendix supplies the warranty information for the Camera.
- **Appendix H: Regulatory Information**  
This appendix supplies the regulatory information regarding the Camera.
- **Appendix I: Contact Information**  
This appendix provides contact information for a variety of Linksys resources, including Technical Support.

# Chapter 2: Planning Your Wireless Network

## Introduction

A wireless local area network (WLAN) is exactly like a regular local area network (LAN), except that each computer in the WLAN uses a wireless device to connect to the network. Computers and other devices, such as peripherals, in a WLAN share the same frequency channel and SSID, which is an identification name for wireless devices.

## Ad-Hoc and Infrastructure Modes

Unlike wired networks, wireless networks have two different modes in which they may be set up: infrastructure and ad-hoc. An infrastructure configuration is a WLAN and wired LAN communicating to each other through an access point. An ad-hoc configuration is wireless-equipped computers communicating directly with each other. Choosing between these two modes depends on whether or not the wireless network needs to share data or peripherals with a wired network or not.

If the computers on the wireless network need to be accessed by a wired network or need to share a peripheral, such as a printer, with the wired network computers, the wireless network should be set up in infrastructure mode. The basis of infrastructure mode centers around an access point, which serves as the main point of communications in a wireless network. (A wireless router can also be used because a wireless router incorporates the capabilities of an access point.) Access points transmit data to PCs equipped with wireless network cards, which can roam within a certain radial range of the access point. Multiple access points can be arranged to work in succession to extend the roaming range, and can be set up to communicate with your Ethernet (wired) hardware as well.

If the wireless network is relatively small and needs to share resources only with the other computers on the wireless network, then the ad-hoc mode can be used. Ad-hoc mode allows computers equipped with wireless transmitters and receivers to communicate directly with each other, eliminating the need for an access point. The drawback of this mode is that, in Ad-Hoc mode, wireless-equipped computers are not able to communicate with computers on a wired network. And, of course, communication between the wireless-equipped computers is limited by the distance and interference directly between them.

## Network Layout

The Wireless-B Internet Video Camera is compatible with all 802.11b and 802.11g routers, such as model numbers BEFW11S4 and WRT54G, as well as access points, including model numbers WAP11 and WAP54G. The

**LAN (Local Area Network):** the computers and networking products that make up the network in your home or office.

**WLAN (Wireless Local Area Network):** A group of computers and associated devices that communicate with each other wirelessly.

**Infrastructure:** configuration in which a wireless network is bridged to a wired network via an access point.

**Ad-hoc:** a group of wireless devices communicating directly to each other (peer-to-peer) without the use of an access point.

## Wireless-B Internet Video Camera

Camera will also communicate with network adapters, such as the Wireless-B and Wireless-G Network Adapters (model numbers WPC11 and WPC54G) for your laptop computers, Wireless-B and Wireless-G PCI Adapters (model numbers WMP11 and WMP54G) for your desktop PCs, and Wireless-B USB Adapter (model number WUSB11) for your computer when you want to enjoy USB connectivity.

With these, and many other Linksys products, your networking options are limitless. Go to the Linksys website at [www.linksys.com](http://www.linksys.com) for more information about products that work with the Wireless-B Internet Video Camera.

# Chapter 3: Getting to Know the Wireless-B Internet Video Camera

## Camera LEDs

The Camera has four LEDs to let you know how the Camera is functioning.

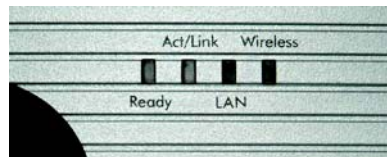


Figure 3-1: Camera LEDs

- Ready** Green. The **Ready** LED lights up when the Camera is powered on. It flashes while the Camera is initializing and is steadily lit when the Camera is ready for use.
- Act/Link** Green. The **Act/Link** LED flashes when there is activity.
- LAN** Green. The **LAN** LED lights up when there is a connection to a wired network. It flashes when data is transmitted to or received from the wired network.
- Wireless** Green. The **Wireless** LED lights up when there is a connection to a wireless network. It flashes when data is transmitted to or received from the wireless network.

## Camera Head

The Camera head and its focus ring allow you to modify the aim and focus of the Camera.

To alter the Camera's aim, swivel the Camera head.

To adjust the Camera's focus, rotate the dark gray focus ring.



Figure 3-2: Camera Head

## Camera Ports

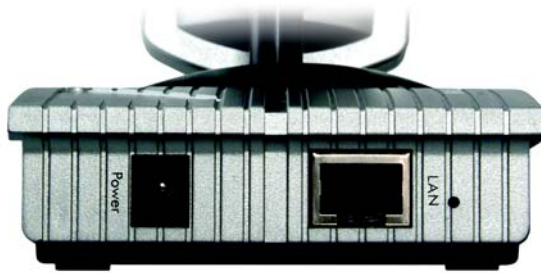


Figure 3-3: Camera Ports

The Camera features two ports and a Reset button on the bottom panel.

**Power** The **Power** port is where you will connect the power adapter.

**LAN** The **LAN** port is where you will connect the Ethernet network cable.

**(Reset)** The **Reset** button is what you will press if you need to reset the Camera. Insert a paper clip into the opening next to the LAN port. Then press the button and hold it in for five seconds.



**Important:** Resetting the Camera will erase all of your settings, such as WEP encryption information, and replace them with the factory defaults. Do not reset the Camera if you want to retain these settings.

# Chapter 4: Connecting the Wireless-B Internet Video Camera for Setup

## Overview

Before you set up the Camera, connect it to a wired or wireless network. Proceed to the appropriate section for your setup.

If you need to move the Camera from a wired network to a wireless network, or vice versa, go to this section, "Moving the Camera to a Different Network."

## Connection to a Wired Network for Setup

1. Connect the Ethernet network cable to your router or switch. If you want to connect the Camera directly to your PC, use a crossover Ethernet network cable (not included).
2. Connect the other end of the cable to the LAN port on the Camera. See Figure 4-1.
3. Connect the power adapter to the Power port on the Camera.
4. Plug the power adapter into an electrical outlet.

The Camera's Ready LED flashes while the Camera is initializing. The Camera is ready for use when the Ready and LAN LEDs are solidly lit.

Proceed to "Chapter 5: Setting up and Mounting the Wireless-B Internet Video Camera."

## Connection to a Wireless Ad-Hoc Network for Setup

1. Make sure your computer has the following wireless settings:
  - SSID - linksys
  - Network Mode - Ad-Hoc
  - Channel - 6
  - WEP - Disabled
2. Connect the power adapter to the Power port on the Camera.

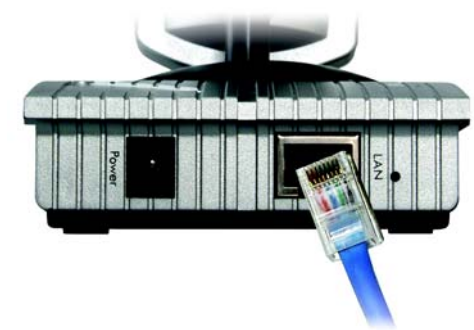


Figure 4-1: Connect the Ethernet Network Cable



**NOTE:** You **MUST** connect the Camera to a PC, router, or switch using the Ethernet network cable **BEFORE** powering on the Camera. Otherwise, the Camera will not function.



Figure 4-2: Connect the Power Adapter

3. Plug the power adapter into an electrical outlet.

The Camera's Ready LED flashes while the Camera is initializing. The Camera is ready for use when the Ready and Wireless LEDs are solidly lit.

**Proceed to "Chapter 5: Setting up and Mounting the Wireless-B Internet Video Camera."**

## Moving the Camera to a Different Network

When you move the Camera from a wired network to a wireless network, or vice versa, you must power off the Camera before connecting to the new network. Proceed to the appropriate instructions.

To move the Camera from a wired network to a wireless network, follow these instructions:

1. Unplug the power adapter from the Camera.
2. Unplug the Ethernet network cable from the Camera.
3. Re-connect the power adapter to the Power port on the Camera.

The Camera's Ready LED flashes while the Camera is initializing. The Camera is ready for use when the Ready and Wireless LEDs are solidly lit.

**Proceed to "Chapter 5: Setting up and Mounting the Wireless-B Internet Video Camera."**

To move the Camera from a wireless network to a wired network, follow these instructions:

1. Unplug the power adapter from the Camera.
2. Connect the Ethernet network cable to your PC, router, or switch.
3. Connect the other end of the cable to the LAN port on the Camera.
4. Re-connect the power adapter to the Power port on the Camera.

The Camera's Ready LED flashes while the Camera is initializing. The Camera is ready for use when the Ready and LAN LEDs are solidly lit.

**Proceed to "Chapter 5: Setting up and Mounting the Wireless-B Internet Video Camera."**



# Chapter 5: Setting up and Mounting the Wireless-B Internet Video Camera

## Setup Wizard

The Wireless-B Internet Video Camera Setup Wizard will guide you through the installation and configuration procedure.

1. Insert the Setup CD-ROM into your CD-ROM drive. The Setup Wizard should run automatically, and the *Welcome* screen should appear. If it does not, click the **Start** button and choose **Run**. In the field provided, enter `D:\wvc11b.exe` (if "D" is the letter of your CD-ROM drive).
  - **Setup**. Click the **Setup** button to begin the installation process.
  - **Install Viewer & Recorder Utility**. Click this button to install the Camera's Viewer & Recorder Utility on your PC.
  - **Setup SoloLink DDNS Service**. Click the **Setup SoloLink DDNS Service** button to configure and use Linksys's Dynamic Domain Name System (DDNS) service.
  - **User Guide**. Click this button to open the PDF file of this User Guide.
  - **Exit**. Click the **Exit** button to exit the Setup Wizard.
2. To install the Camera, click the **Setup** button on the *Welcome* screen.
3. When you see the screen shown in Figure 5-2, make sure the Camera is properly connected to either a wired or wireless network. Then click the **Next** button to continue.



Figure 5-1: Welcome

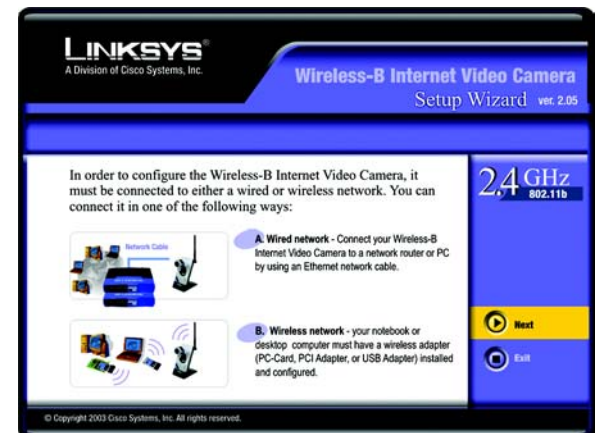


Figure 5-2: Connection for Setup

## Wireless-B Internet Video Camera

- The screen shown in Figure 5-3 displays a list of Wireless-B Internet Video Cameras on your network, along with the status information for the Camera whose name is highlighted. In the *Selection* box, click the name of the Camera you are currently installing. Write down the IP address of the Camera, so you can use it to access the Web-based Utility later. Click the **Next** button.
- For security purposes, you will be asked to enter a name and password in order to have administrator access to the Camera. In lowercase letters, enter **admin** in the *Administrator Name* and *Administrator Password* fields (later you can change these through the Web-based Utility). Then click the **OK** button.
- On the *Basic Settings* screen, you can alter the following settings:
  - Camera Name.** You can give the Camera a unique name. Memorable names are helpful, especially if you are using multiple Cameras on the same network. It should have 15 characters or fewer.
  - Description.** You may enter additional information, such as location, in this field. It has a maximum length of 32 characters.
  - Time Zone.** Select the time zone for the Camera's location.
  - Date.** Enter today's date in the fields provided.
  - Time.** Enter the current time in the fields provided.

When you have finished making your changes, click the **Next** button.

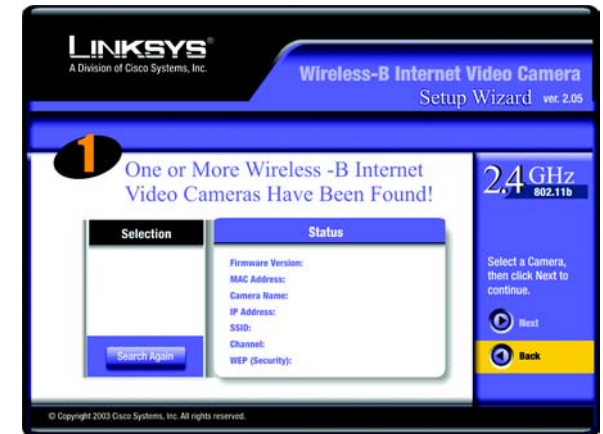


Figure 5-3: Cameras Found

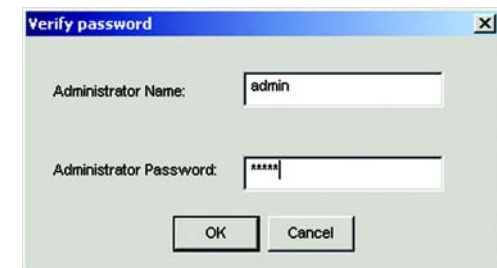


Figure 5-4: Administrator Name and Password



Figure 5-5: Basic Settings

7. If your network has a DHCP server, such as a router with DHCP enabled, click the **Automatic Configuration-DHCP** radio button. If you need to assign a static IP address to the Camera, keep the default setting, **Static IP address**.

Then click the **Next** button.

8. If you selected Automatic Configuration-DHCP in step 7, then proceed to step 9. If you selected Static IP Address, then the *IP Settings* screen will appear. Enter an IP Address, Subnet Mask, and Default Gateway appropriate for your network. You must specify an IP Address and Subnet Mask on this screen. If you are unsure about the Default Gateway, it is better to leave this field blank. Then complete the *Primary DNS* and/or *Secondary DNS* fields. You must enter at least one DNS address, which can be obtained from your ISP. Click the **Next** button.

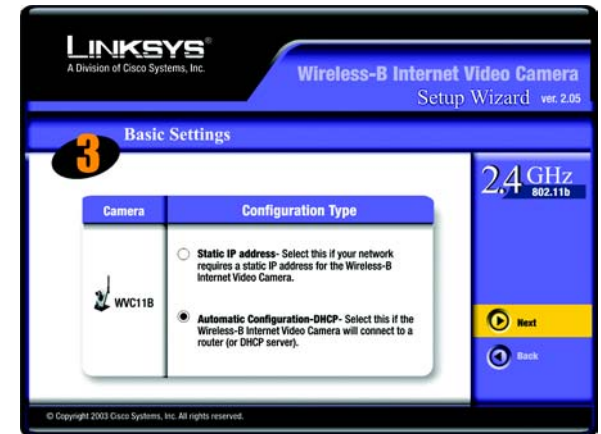


Figure 5-6: DHCP or Static IP Address

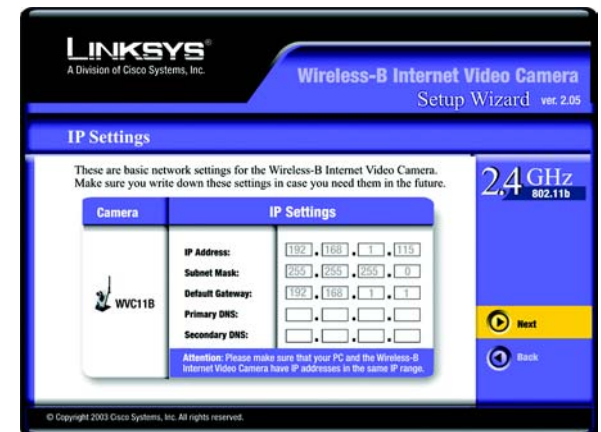


Figure 5-7: IP Settings

9. The *Mode Settings* screen will appear. Click the **Infrastructure** radio button if you want the Camera to communicate using an access point or wireless router. Click the **Ad-Hoc** radio button if you want the Camera to communicate without using an access point or wireless router. Click the **Next** button.
10. The *Basic Settings* screen will appear, so you can change the wireless settings. Enter your wireless network's SSID or network name. If you chose Ad-Hoc mode, select the channel at which the network broadcasts its wireless signal.
  - **SSID.** The SSID must be identical for all devices in a wireless network. It is case-sensitive and should have 32 alphanumeric characters or fewer. (You can use any keyboard character, but do not use any spaces.)
  - **Channel.** If you set the Camera to Ad-Hoc mode, select the appropriate channel from the drop-down menu. All devices in your wireless ad-hoc network must use the same channel in order to function correctly.

Then click the **Next** button.

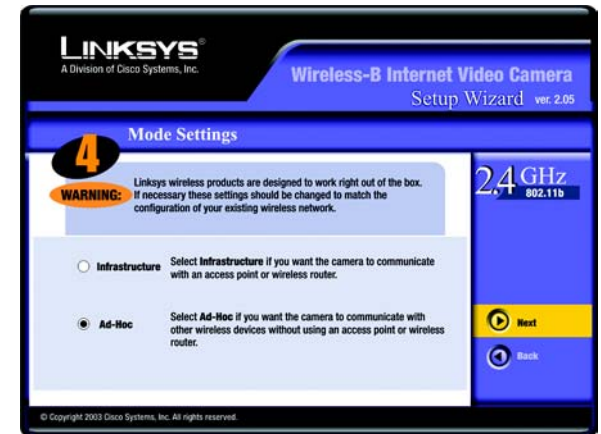


Figure 5-8: Mode Settings

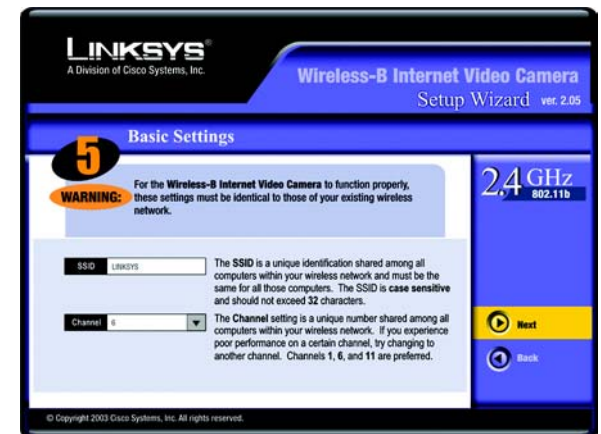


Figure 5-9: Basic Settings (Wireless)

11. The *Security Settings* screen will appear. If your network has WEP encryption enabled, then select the level of WEP encryption and enter a Passphrase. If you do not have a Passphrase and you want to manually enter a WEP key, leave the *Passphrase* field blank. If your network doesn't have WEP encryption disabled, keep the default, **Disabled**.

- **WEP.** In enable WEP encryption, select **64-Bit Keys** or **128-Bit Keys** from the drop-down menu. Then enter a Passphrase. If you want to manually enter a WEP key, leave the *Passphrase* field blank.
- **Passphrase.** If you enabled WEP encryption, you can enter a Passphrase, so a WEP key will be automatically generated after you click the Next button. If you want to manually enter a WEP key, leave the *Passphrase* field blank. The Passphrase is case-sensitive and should have 16 alphanumeric characters or fewer. It must match the passphrase of your wireless network and is compatible with Linksys wireless products only. (You will have to enter the WEP key(s) manually on any non-Linksys wireless products.)

Click the **Next** button.

12. If you entered a Passphrase, then you will see the automatically generated WEP key. If you did not enter a Passphrase, then enter a WEP key in the *Key 1* field.

- **Key 1.** If you need to manually enter a WEP key, complete this field. If you are using 64-bit WEP encryption, then the key must consist of exactly 10 hexadecimal characters. If you are using 128-bit WEP encryption, then the key must consist of 26 hexadecimal characters. Valid hexadecimal characters are "0" through "9" and "A" through "F".

Click the **Next** button.

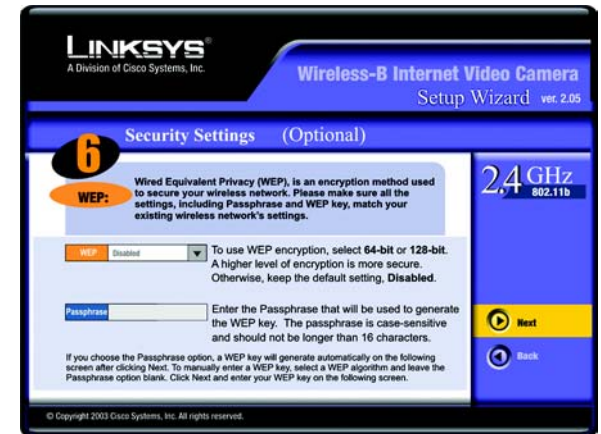


Figure 5-10: Security Settings

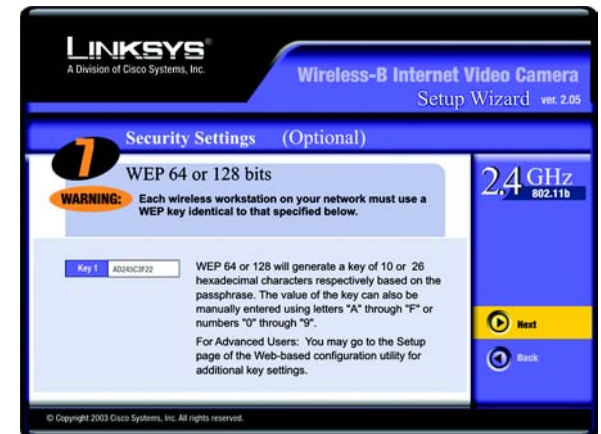


Figure 5-11: Security Settings (WEP Key)



13. On the screen shown in Figure 5-12, review your settings before the Setup Wizard starts to copy your files. Click the **Save** button to continue.

14. After the files have been successfully copied, the *Congratulations* screen will appear.

- **Install Viewer & Recorder Utility.** Click this button to install the Camera's Utility on your PC.
- **Setup SoloLink DDNS Service.** Click the **Setup SoloLink DDNS Service** button to set up and configure the Linksys Dynamic Domain Name System (DDNS) service.
- **Exit.** Click the **Exit** button if you want to install the Camera's Utility later.

Proceed to the next section, "Placement Options."

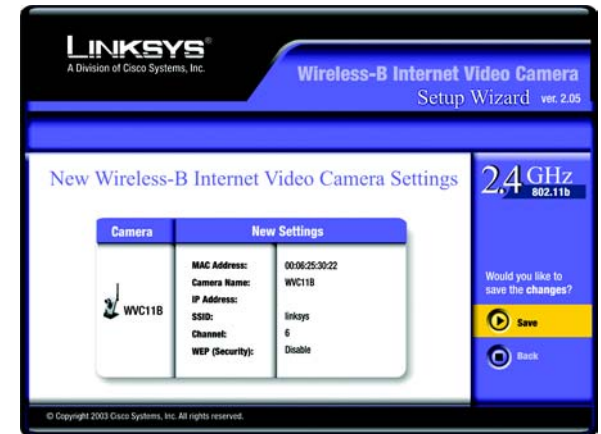


Figure 5-12: Review New Settings

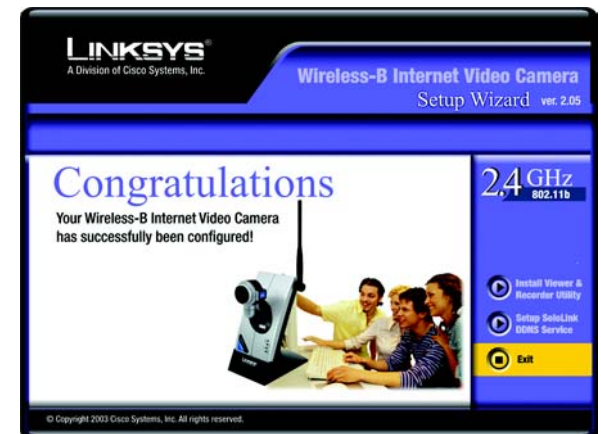


Figure 5-13: Congratulations

## Placement Options

There are three ways to place the Camera. The first way is to place the Camera horizontally on a surface, so it sits on four small rubber feet. The second way is to stand the Camera vertically on a surface (see Figure 5-14). The third way is to hang the Camera on a wall (see Figure 5-15). The second and third options are explained in further detail below.

### Stand Option

1. The Camera includes a Camera Desktop Stand. Insert the end opposite to the antenna into the Stand.
2. Place the Camera, and adjust its aim and focus accordingly.

### Wall Mount Option

The Camera has two wall-mount slots on the opposite side of its viewer. The distance between these two slots is 80 mm (3.15 inches).

1. Determine where you want to mount the Camera. Attach two screws to the wall, so that the Switch's wall-mount slots line up with the two screws.
2. Maneuver the Camera so the screws are inserted into the two slots.
3. Adjust the Camera's aim and focus accordingly.

**The installation of the Wireless-B Internet Video Camera is complete. Go to "Chapter 6: Installing the Wireless-B Internet Video Camera Viewer & Recorder Utility."**

**If advanced users wish to access the Camera through its Web-based Utility, then proceed to "Chapter 8: Using the Wireless-B Internet Video Camera Web-based Utility."**



Figure 5-14: Stand Option



Figure 5-15: Wall Mount Option

# Chapter 6: Installing and Using the Wireless-B Internet Video Camera Viewer & Recorder Utility

## Overview

This chapter will instruct you on how to install and use the Viewer & Recorder Utility on your PC. The Utility allows you to easily view and record the Camera's video.



**Note:** To view video using a web browser, you must use Internet Explorer version 5.5 or higher. The View Video feature will not work with Netscape. Netscape users should use the Viewer & Recorder Utility instead.

## Installing the Viewer & Recorder Utility

1. On the *Welcome* or *Congratulations* screen of the Setup Wizard, click the **Install Viewer & Recorder Utility** button.
2. The *Welcome* screen shown in Figure 6-2 will appear. Click the **Next** button to proceed.



Figure 6-1: Install Viewer & Recorder Utility



Figure 6-2: Install Viewer & Recorder Utility Welcome



3. The *Choose Destination Location* screen will appear. To install the Viewer & Recorder Utility files in the default folder, click the **Next** button. To select a different folder, click the **Browse** button and follow the on-screen directions.
4. The *Select Program Folder* screen will appear. To add program icons to the default folder, click the **Next** button. If you wish, you can rename the default folder. To add program icons to an existing folder, select one from the Existing Folders listed, and then click the **Next** button.
5. After the OCX plug-in for video streaming has been installed, the screen shown in Figure 6-5 will appear. Click the **OK** button.
6. When the setup is complete, click the **OK** button. (See Figure 6-6.)

To learn how to use the Viewer & Recorder Utility, proceed to the next section, "Using the Viewer & Recorder Utility."

To set up the Linksys SoloLink Service, go to "Chapter 7: Setting up the Linksys SoloLink DDNS Service."

**Advanced users: If you want to use the Camera's Web-based Utility, go to "Chapter 8: Using the Wireless-B Internet Video Camera Web-based Utility."**



Figure 6-3: Choose Destination Location

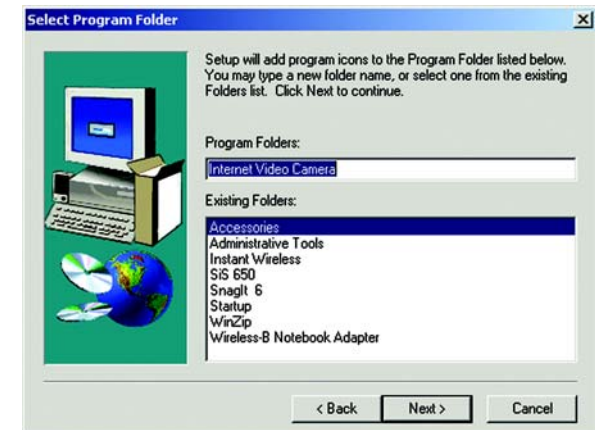


Figure 6-4: Select Program Folder



Figure 6-5: OCX Plug-in

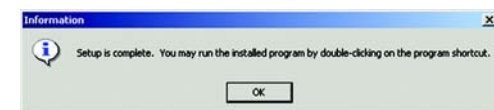


Figure 6-6: Setup Complete

## Using the Viewer & Recorder Utility

After the Viewer & Recorder Utility has been installed, the Viewer & Recorder Utility icon, shown in Figure 6-7, will be displayed twice, one on your desktop and one in the system tray of your desktop's taskbar.

There are two ways to open the Viewer & Recorder Utility:

- Double-click the icon on your desktop (the icon acts as a shortcut)
- Right-click the icon in the system tray, and then click **Main Program**.

You will see the Utility's main screen (see Figure 6-8).

It is divided into two sections, *Cameras* and *Scheduled Recordings in progress*. From this screen, you can control Cameras, view video, and schedule recordings.

To minimize any of the Utility's screens, click the **X** button in the upper right-hand corner. To request help information, click the **?** button in the upper right-hand corner. To close the Utility, right-click the Viewer & Recorder Utility icon (see Figure 6-7) in your desktop's system tray. Then click **Exit**.

### Cameras

From the *Cameras* section (see Figure 6-8), you can find or delete Cameras, change Camera settings, and view current video.

#### Camera List

**Default ID.** The identification name of the Camera used by the Camera and the Utility to exchange data.

**Camera Name.** The name you gave to the Camera.

**Status.** The status of the Camera.



Figure 6-7: Viewer & Recorder Utility Icon

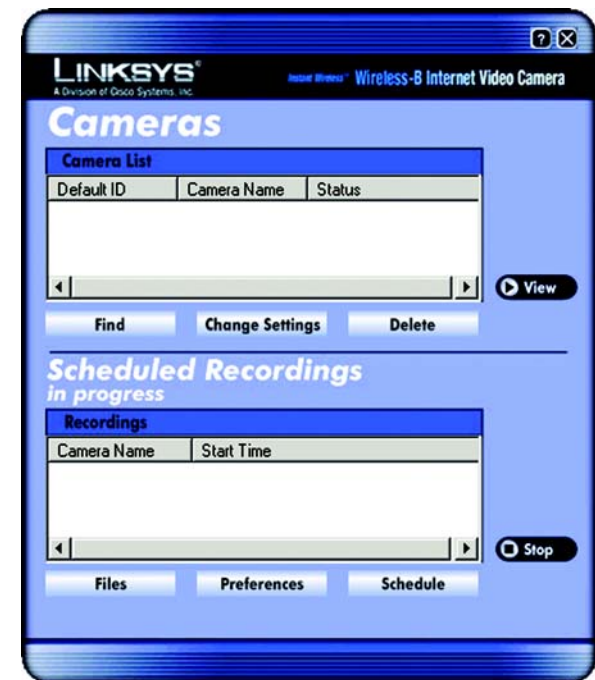


Figure 6-8: Main Screen

## Find

To find a Camera on your local network or the Internet, click the **Find** button. You will see the screen shown in Figure 6-9. There will be two tabs available, LAN and Internet.

## LAN

The *LAN* screen shows the Cameras found on your local area network, along with the status information for each Camera.

### Cameras on LAN

The Utility will search for Cameras on the local area network and display a list in the *Cameras on LAN* box. To run a new search, click the **Refresh** button.

For the Camera whose name is currently selected in the *Cameras on LAN* box, the following information will be displayed:

### Camera Info

**Camera Name.** The name you gave to the Camera.

**Description.** The information about the Camera that you entered.

**Address.** The Camera's IP address.

**Port Number.** The port number the Camera uses for communication.

**Login.** If you set up the Camera with a name and password, then you will need to enter them here in order to access the Camera.

**Name.** Enter the login Name.

**Password.** Enter the login Password.

To add a Camera to the Utility's list, select the Camera you wish to add by clicking its name in the *Cameras on LAN* box. Then click the **Add** button.



Figure 6-9: Find Camera from LAN

## Internet

The *Internet* screen shows the Camera found on the Internet, along with the status information for it. See Figure 6-10.

### Test Results

First, go to the *Camera Info* section. Enter the Camera's Address, Port Number, and login information (if required). Then click the **Test** button to find the Camera. The following information will be displayed:

### Camera Info

**Camera Name.** The name you gave to the Camera.

**Description.** The information about the Camera that you entered.

**Address.** The Camera's IP address or SoloLink DDNS address.

**Port Number.** The port number the Camera uses for communication.

**Login.** If you set up the Camera with a name and password, then you will need to enter them here in order to access the Camera.

**Name.** Enter the login Name.

**Password.** Enter the login Password.

To add the Camera to the Utility's list, click the **Add** button. If you wish to clear a Camera, click the **Clear** button.

### Change Settings

To modify a Camera's settings, select its name in the *Camera List* box, and click the **Change Settings** button. See Figure 6-11.

### Test Results

First, make your changes to the Camera's *Address* and *Port Number* fields as needed. If you set up the Camera with a name and password, then you will need to enter them in the *Name* and *Password* fields in order to access the Camera. Click the **Save** button to save your changes.

Click the **Test** button to make sure the Utility is able to find the Camera using the new information.

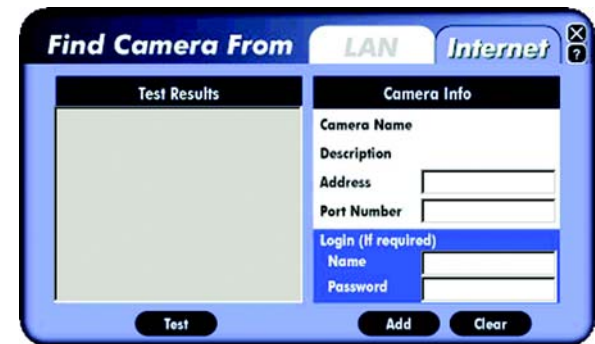


Figure 6-10: Find Camera from Internet

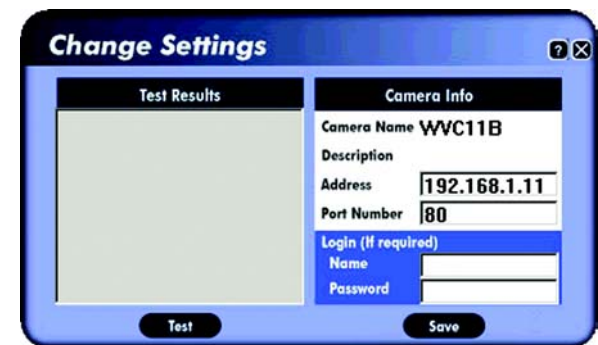


Figure 6-11: Change Settings

For the selected Camera, the following information will be displayed:

### Camera Info

**Camera Name.** The name you gave to the Camera.

**Description.** The information about the Camera that you entered.

**Address.** The Camera's IP address or your SoloLink DDNS address.

**Port Number.** The port number the Camera uses for communication.

**Login.** If you set up the Camera with a name and password, then enter them here to access the Camera.

**Name.** Enter the login Name.

**Password.** Enter the login Password.

If you want to save any changes, click the **Save** button.

### Delete

To delete a Camera from the list, select the Camera by clicking its name in the *Camera List* box, and then click the **Delete** button (see Figure 6-12).

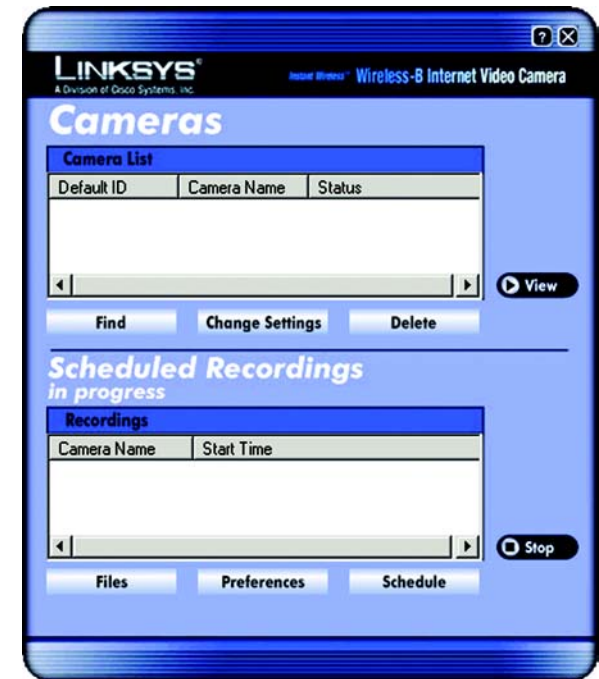


Figure 6-12: Delete Camera

## View

To view the video seen by a Camera, select the Camera by clicking its name in the *Camera List* box, and then click the **View** button.

You will see a screen similar to the one shown in Figure 6-13. Click the button with the circle to record the video. (You will see a rotating recording icon, which alternates blue and green in color, in the desktop's system tray, as shown in Figure 6-14.) Click the button with the square to stop recording or stop the video. If you have stopped the video, click the button with the triangle to resume viewing.

You may find it helpful to know how much memory is required to hold a video recording. The following table lists estimated bit rates and file sizes for a recording at each available resolution and video quality level.

### Estimated Hard-Drive Memory Space Required for Recording per Hour

Resolution	Quality Level	Bit Rate	File Size
320 x 240	Very High	1000kbps	430MB
320 x 240	High	800kbps	344MB
320 x 240	Normal	300kbps	129MB
320 x 240	Low	120kbps	51.6MB
320 x 240	Very Low	40kbps	43MB
160 x 120	Very High	800kbps	86MB
160 x 120	High	400kbps	43MB
160 x 120	Normal	200kbps	21.5MB
160 x 120	Low	100kbps	10.75MB
160 x 120	Very Low	40kbps	4.3MB



Figure 6-13: View Video



Figure 6-14: Recording Icon

## Scheduled Recordings in Progress

From the *Scheduled Recordings in progress* section (see Figure 6-15), you can schedule recordings, alter the recording preferences, and access recording files.

### Recordings

The recordings listed here are scheduled ones that are currently in progress.

**Camera Name.** The name you gave to the Camera doing the recording.

**Start Time.** The time the recording began.



**Note:** The maximum length of a recording file is one hour. If a recording is more than one hour long, then multiple files will be saved.

### Files

To play, delete, or explore recording files, click the **Files** button. You will see the screen shown in Figure 6-16.

The *Files* screen shows the recordings available and their respective information.

**Name.** The name of the file. It begins with “lr” if it was an instant recording. It begins with “Sr” if it was a scheduled recording. The name ends with the date of the recording.

**Camera Name.** The name of the Camera.

**Start Time.** The time the recording began.

**End Time.** The time the recording ended.

### Play

To play a recording file, select it by clicking its Name, and then click the **Play** button.



**Note:** Use Windows Media Player 7 or higher to view your recordings.

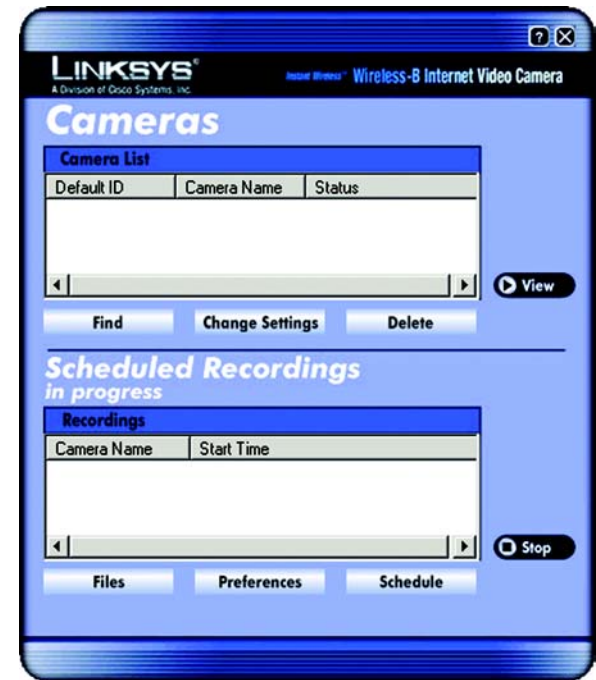


Figure 6-15: Scheduled Recordings in Progress



Figure 6-16: Files



### Delete

To delete a recording file, select it by clicking its Name, and then click the **Delete** button.

### Explore

If the recording file you want is not listed, click the **Explore** button to find the file.

To rename a recording file, click the **Explore** button. After you have found the file, you can rename it.

### Preferences

To designate the folder where recording files are saved, click the **Preferences** button. You will see the screen shown in Figure 6-17. You can also customize the time limit for unscheduled or instant recordings on the *Preferences* screen.

#### *Recorded File Location*

This shows the location where recording files are saved. You can enter a new location, or click the **Browse** button to look for one.

#### *Time limit for unscheduled recordings*

You can customize the maximum amount of time an instant or unscheduled recording is allowed. Select the appropriate amount of time from the drop-down menu. The default is one minute.

To save your changes, click the **Save** button.

### Schedule

To view or modify the recording schedule, click the **Schedule** button. You will see the screen shown in Figure 6-18.

The *Recording Schedule* screen shows the current recording schedule and each recording's information.

**Camera Name.** The name of the Camera.

**Date.** The date of the recording.

**Time.** The start time of the recording.

**Frequency.** How often the recording will occur.



Figure 6-17: Preferences



Figure 6-18: Recording Schedule



### Add

To schedule a new recording, click the **Add** button. The screen shown in Figure 6-19 will appear.

**Camera.** Select the Camera you want for this recording.

**Frequency.** Select how often you want this recording to be made.

**Start Date.** Enter the date you want this recording to start.

**Start Time.** Enter the time you want this recording to start.

**Duration.** Enter the number of hours and minutes you want this recording to last.

When you are finished, click the **Save** button.

### Modify

To modify a scheduled recording, select the recording by clicking its Camera Name, and then click the **Modify** button. The screen shown in Figure 6-20 will appear.

**Camera.** This indicates the Camera that was selected for this recording.

**Frequency.** Alter how often you want this recording to be made.

**Start Date.** Alter the date you want this recording to start.

**Start Time.** Alter the time you want this recording to start.

**Duration.** Alter the number of hours and minutes you want this recording to last.

When you are finished, click the **Save** button.

### Delete

To delete a scheduled recording, select it by clicking its Camera Name, and then click the **Delete** button.

### Stop

To terminate a scheduled recording that is currently in progress, select it by clicking its Camera Name, and click the **Stop** button. (See Figure 6-21).



Figure 6-19: Add to Recording Schedule



Figure 6-20: Modify Scheduled Recording

## Wireless-B Internet Video Camera

If you want to restart the scheduled recording, select the Camera you want by clicking its name in the *Camera List* box, and click the **View** button. You will see a screen similar to the one shown in Figure 6-22. Click the button with the circle to record the video. To stop recording, click the button with the square.

To set up the Linksys SoloLink Service, go to “Chapter 7: Setting up the Linksys SoloLink DDNS Service.”

If you want to use the Camera’s Web-based Utility, go to “Chapter 8: Using the Wireless-B Internet Video Camera Web-based Utility.”

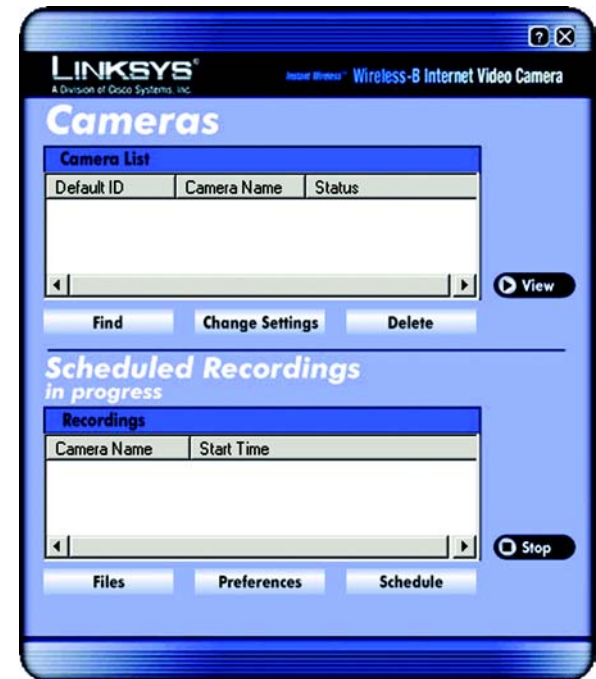


Figure 6-21: Stop Scheduled Recording



Figure 6-22: View Video

# Chapter 7: Setting up the Linksys SoloLink™ DDNS Service

## Overview

This chapter will briefly discuss the Linksys SoloLink DDNS Service, explain how to set up your SoloLink account, and describe how to register additional Cameras on your SoloLink account. You need only one SoloLink account. Once you have set up your account, you can register additional Cameras, one at a time, through each Camera's Web-based Utility. This way each Camera can take advantage of the SoloLink DDNS Service.

## Introduction

The SoloLink DDNS (Dynamic Domain Name System) Service lets you assign a fixed host and domain name to a dynamic Internet IP address. The instructions in this chapter will guide you through the setup needed for use of the SoloLink DDNS Service. For the most current information about the SoloLink DDNS Service, visit [www.linksys.com/sololink](http://www.linksys.com/sololink). For a free, 90-day trial period of your SoloLink account, use the Access ID Card included with the Camera.

You may want to use the Linksys SoloLink DDNS Service if one of the following applies to you:

**Dynamic IP Address** - Your Internet service assigns you a dynamic IP address. Many Internet service providers (ISPs) assign a new IP address to your connection from time to time (for security purposes), or whenever you disconnect and reconnect. The SoloLink service keeps track of your network's address, even when it changes, so you can "find" the Camera.

**Convenience** - There are a couple of ways the SoloLink service can be convenient. If you have a static IP address, you can use the SoloLink service to enter a "name" and port number for remote access of the Camera via the Internet. There's no need to type an entire IP address. For example, you can give a Camera a "name" such as [cam1.myhouse.ourlinksys.com](http://cam1.myhouse.ourlinksys.com).

Also, some DDNS services require your PC to continuously run software that lets them keep track of your IP address. If your PC isn't powered on when your IP address changes, you won't be able to find the Camera on the Internet. The SoloLink service keeps track of where the Camera is.

## Setup Wizard for the SoloLink DDNS Service

1. On the *Welcome* or *Congratulations* screen of the Setup Wizard, click the **Setup SoloLink DDNS Service** button.



The graphic features a blue background with a globe in the center. The globe is surrounded by a blue ring with the text "SoloLink Service" and "Easily access your video stream remotely with SoloLink Service". Below the globe, it says "No need to remember an IP Address, use a simple name for easy access to your camera." and "yourname.ourlinksys.com". At the bottom, a black banner contains the text "For more information go to: www.linksys.com/sololink".

Easily access your video camera remotely over the Internet with  
**SoloLink DDNS Service**  
 To activate your SoloLink account, click on the SoloLink tab on the Setup Wizard or on the Web-based Utility. Use the Access ID Card included with your product to get your SoloLink account **FREE for 90 days**

Figure 7-1: SoloLink Service



Figure 7-2: Welcome

2. The screen shown in Figure 7-3 explains why you would want to use the SoloLink DDNS Service if your network is using a dynamic IP address. Click the **Next** button.
3. The screen shown in Figure 7-4 explains why you would find the SoloLink DDNS Service convenient if you would prefer to access the Camera using a name rather than a series of numbers (its IP address). Click the **Next** button.



Figure 7-3: SoloLink for Dynamic IP Address

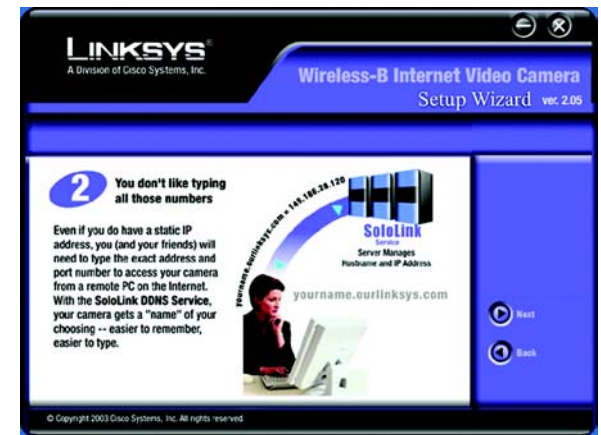


Figure 7-4: SoloLink for Convenience

## Wireless-B Internet Video Camera

4. Make sure your network has an active Internet connection. Verify that your PC and Camera are connected to the network and the Camera is configured properly. Click **Next**.
5. The screen shown in Figure 7-6 will display a list of Wireless-B Internet Video Cameras on your network and their status information. In the *Selection* box, click the name of the Camera you are currently setting up. Click **Next**.



Figure 7-5: Check Connections

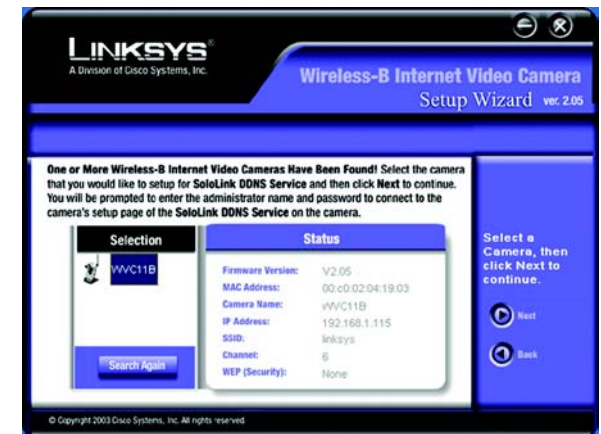


Figure 7-6: Cameras Found

- To ensure security, you will be asked to enter a user name and password before you can access the Camera. If you have not changed the Camera's user name and password, then enter **admin** in the *User name* and *Password* fields (**admin** is the default). Then click **OK**.
- Your web browser will automatically start up, and the *SoloLink DDNS* screen of the Camera's Web-based Utility will appear. Click **New User ? - Click here to Register**.



Figure 7-7: User Name and Password Login



Figure 7-8: SoloLink DDNS

8. The screen shown in Figure 7-9 will ask you to make sure your network has an active Internet connection. Click **Continue**.
9. On the *Welcome to the SoloLink DDNS Service* screen, click **Set up a NEW Account**.



Figure 7-9: Confirm Active Internet Connection



Figure 7-10: Welcome to the SoloLink DDNS Service



10. On the *Sign Up* screen, enter the Access ID for your free trial offer. It is provided on the Promotion Card included with the Camera. (If you don't have an Access ID, then leave the *Access ID* field blank.)

Then enter your account and user information. Enter a Username and Password for your account. Enter the Password again in the *Confirm Password* field.

Complete the following required fields: *First Name*, *Last Name*, *Phone*, and *Email*. You can also enter your postal address and choose to receive updates by e-mail. Then click **Continue**.

**FREE for 90 days**

### Sign Up

Sign up for the Linksys SoloLink DDNS Service in order to get your easy-to-remember name (you may purchase a new one) to access your Linksys Internet Video Camera no matter how many times your broadband provider changes your IP address.

The FREE trial offer will give you an opportunity to try out this amazing service for 90 days. To activate your FREE trial offer please use the Access ID you received on the Promotion Card here.

Access ID

There are special rates available if you want to sign up **NOW** for one or two years:

**\$19.99** for 1-year (and get 30 days free => 15 months for \$19.99)  
**\$34.99** for 2-year (and get 30 days free => 27 months for \$34.99)

If you sign-up after you register for the 90-day trial offer you will pay  
**\$24.99** for one year or **\$39.99** for 2 years.

#### Account Information

Username

This is the user name for your SoloLink account, not your camera's name.

Password

Confirm Password

#### User Information

Fields marked with an \* are required.

First Name

Last Name

Address 1

Address 2

City

State

Zip

Country

Phone

Email

Receive Updates by Email  Yes  No

**Continue >>**

Figure 7-11: Sign Up



11. Review your information on the *Confirmation* screen. If the new settings are correct, click **Continue**.
12. On the *Select a Location ID* screen, enter a Location ID, which can be a name describing your network's location. It will be combined with the Camera's Device Name and *ourlinksys.com* to create a convenient URL you can use to access the Camera. Click **Continue**.

The screenshot shows a 'Confirmation' screen with two main sections: 'Account Information' and 'User Information'. Below these sections are navigation buttons for '<< Back' and 'Continue >>'. A warning message at the bottom states: 'If any of the information above is incorrect click the BACK button.'

Account Information	
Username	jdoe
Password	*****
Confirm Password	*****
User Information	
First Name	John
Last Name	Doe
Address 1	1234 Street Address
Address 2	
City	My City
State	My State
Zip	My Zip Code
Country	USA
Phone	My Phone
Email	jdoe@email.com
Receive Updates by Email	Yes

Figure 7-12: Confirmation of New Settings

The screenshot shows the 'Setup 1 - Select a Location ID' screen. It contains explanatory text about Location IDs, an example of a URL format, and a text input field for the Location ID. A 'Continue >>' button is located at the bottom right.

In order to uniquely identify your device on the internet, you need to provide a Location ID. If your choice of Location ID has already been taken, you will be given a chance to choose something else.

The Location ID may consist only of letters, numbers, and hyphens(nospaces).

The Device Name you provided in the Camera Setup Wizard and the Location ID you enter here will be combined with "ourlinksys.com" to produce an address (URL) in the format

cam1 myhouse ourlinksys.com

that you will use to access your Linksys device. In the example above myhouse is the Location ID.

Enter Location ID here.

[Device Name]  ourlinksys.com

Figure 7-13: Select a Location ID

13. On the *Confirm your Location ID* screen, verify that the Location ID is correct. Then click **Continue**.
14. On the *Payment* screen, choose one of two payment plans, **Bill me now** or **Bill me later**. (If you did not enter an Access ID, then you have one choice, **Bill me now**.)

If you click *Bill me later*, go to step 15.

If you click *Bill me now*, you will see a screen asking for billing information. Follow the on-screen instructions and then go to step 15.

15. Read the Terms of Service agreement on the *Verification* screen. Click **Create Account** to accept the terms of service.



Figure 7-14: Confirm Your Location ID

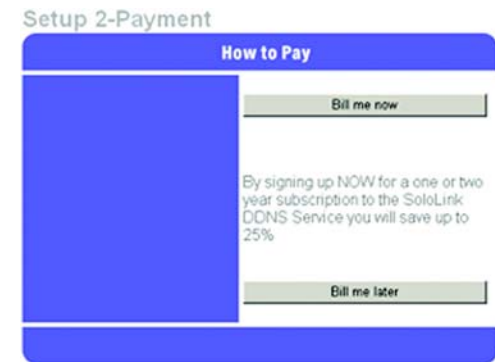


Figure 7-15: Payment



Figure 7-16: Verification

16. On the *Create Links* screen, click **Continue**. The SoloLink DDNS Service will send your account information to the Camera.
17. A pop-up screen, as shown in Figure 7-18, will inform you that you have successfully registered your account. Click **OK**.

At the bottom of the *SoloLink DDNS* screen, click the **Apply** button to register the Camera with your account.



Figure 7-17: Create Links



Figure 7-18: Successful Registration

18. A confirmation page will display the link or address you will use to access the Camera and the port number the SoloLink DDNS Service will use to find the Camera (see Figure 7-19). Click **Continue**.
19. A pop-up screen, as shown in Figure 7-20, will inform you that you have successfully set up the SoloLink DDNS Service for the Camera. Click **OK**.



**Note:** Make sure you set up the port forwarding feature on your network router, so the SoloLink DDNS Service will be able to access the Camera.

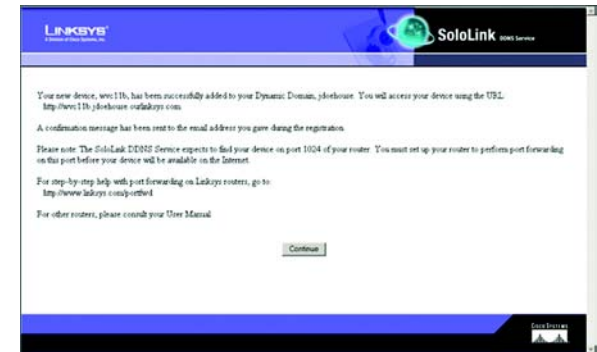


Figure 7-19: Account Confirmation of Camera

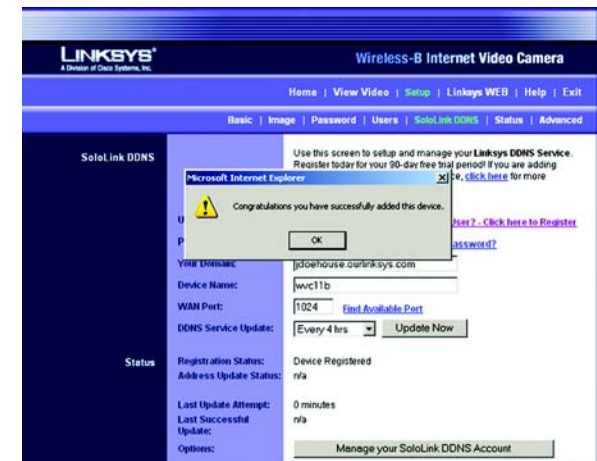


Figure 7-20: Successful Setup

20. Set up port forwarding on your network router, so the SoloLink DDNS Service will be able to track the Wireless-B Internet Video Camera. Go to [www.linksys.com/portfwd](http://www.linksys.com/portfwd) for instructions on how to configure a Linksys router (see Figure 7-21).

For other routers, refer to your router's documentation.

The SoloLink DDNS setup is complete. If you want to register more Cameras with your SoloLink account, proceed to the "SoloLink Registration of Additional Cameras" section.

For more information about the Camera's Web-based Utility, proceed to "Chapter 8: Using the Wireless-B Internet Video Camera Web-based Utility."

## SoloLink Registration of Additional Cameras

After you have set up your SoloLink account, you can add more Cameras to your SoloLink account using each Camera's Web-based Utility. Follow these instructions for each Camera you add:

1. To access a Camera's Web-based Utility, launch **Internet Explorer**, and enter the Camera's IP address in the *Address* field. (The default IP address is **192.168.1.115**.) Then press **Enter**.
2. The *Welcome* screen will appear (see Figure 7-22). Click the **Setup** tab.
3. A password request page, shown in Figure 7-23, will pop up. (Windows XP users will see a similar screen.) Enter **admin** (the default user name and password) in the *User Name* and *Password* fields. Then click the **OK** button.
4. Click the **SoloLink DDNS** tab.
5. In the *Username*, *Password*, and *Your Domain* fields, enter your SoloLink account information (see Figure 7-24).
6. In the *Device Name* field, give the Camera a unique name. The DDNS service will not work if multiple Cameras have the same Device Name.
7. In the *WAN Port* field, enter a unique port number. This is the number of the port you will use to access the Camera remotely. If you need to find an available port, click **Find Available Port** and follow the on-screen instructions. The DDNS service will not work if multiple Cameras use the same WAN port.
8. Depending on how often you want the DDNS service to update the dynamic IP address, select the appropriate time interval from the *DDNS Service Update* drop-down menu. To update the dynamic IP address immediately, click the **Update Now** button.



Figure 7-21: Port Forwarding Information



Figure 7-22: Web-based Utility Welcome



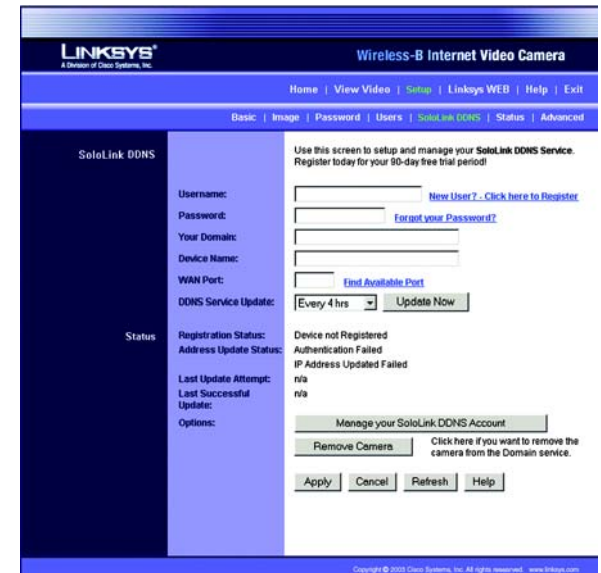
Figure 7-23: User Name and Password

9. Click the **Apply** button on the *SoloLink DDNS* screen. The Camera will automatically register itself with your SoloLink account.
10. Set up port forwarding on your network router, so the SoloLink DDNS Service will be able to track the Wireless-B Internet Video Camera. Go to [www.linksys.com/portfwd](http://www.linksys.com/portfwd) for instructions on how to configure a Linksys router.

For other routers, refer to your router's documentation.

**The Camera has been added to your SoloLink account.**

**For more information about the Camera's Web-based Utility, proceed to "Chapter 8: Using the Wireless-B Internet Video Camera Web-based Utility."**



**Figure 7-24: SoloLink DDNS**

# Chapter 8: Using The Wireless-B Internet Video Camera's Web-based Utility

## Overview

Use the Camera's Web-based Utility to access and alter its settings. This chapter will describe each webpage in the Utility and its features. The Utility can be accessed via the web browser of a computer connected to the Camera.

## How to Access the Web-based Utility

To access the Utility, launch Internet Explorer, and enter the Camera's IP address in the *Address* field. (The default IP address is **192.168.1.115**.) Then press **Enter**.

The *Welcome* screen of the Web-based Utility will appear (see Figure 8-2).

You have six tabs available:

- **Home.** To return to the *Welcome* screen, click the **Home** tab.
- **View Video.** To view the Camera's video, click the **View Video** tab. Go to the "View Video" section for more information.
- **Setup.** To alter the Camera's settings, click the **Setup** tab. Go to the "Setup" section for more information.
- **Linksys WEB.** To go to the Linksys website, *www.linksys.com*, click the Linksys WEB tab.
- **Help.** The *Help* screen allows you to get information about the various *Setup* screens, download the latest Viewer & Recording Utility, download this User Guide, download Acrobat Reader, restore factory defaults, and upgrade the Camera's firmware. Go to the "Help" section for more information.
- **Exit.** To close the Utility, click the **Exit** tab.

## View Video

Follow these instructions to view the Camera's video.



Figure 8-1: Camera's Default IP Address



Figure 8-2: Web-based Utility Welcome



1. Click the **View Video** tab on the *Welcome* screen.
2. A *Security Warning* screen about an OCX plug-in may appear (see Figure 8-3). To enable your computer to see the Camera's video, click the **Yes** button.
3. A screen will appear showing you the video from the Camera.



**Note:** To view video using a web browser, you must use Internet Explorer version 5.5 or higher. The View Video feature will not work with Netscape. Netscape users should use the Viewer & Recorder Utility instead.

## Setup

Click the **Setup** tab on the *Welcome* screen to alter the Camera's settings. A password request page, shown in Figure 8-4 will pop up. (Windows XP users will see a similar screen.) Enter **admin** (the default user name and password) in the *User Name* and *Password* fields. Then click the **OK** button.



**Note:** For added security, you should always change the Login Name and Password through the *Password* screen of the Utility.

The *Basic* screen will appear. You have six tabs available:

- **Basic.** To configure the Camera's basic, LAN, and wireless settings, use the *Basic* screen.
- **Image.** Customize the video settings on the *Image* screen.
- **Password.** Alter the Administrator name and password on the *Password* screen.
- **Users.** Designate users and their level of access to the Camera on this screen.
- **SoloLink DDNS.** Set up and manage the SoloLink DDNS Service. DDNS (Dynamic Domain Name System) lets you assign a fixed host and domain name to a dynamic Internet IP address.
- **Status.** Status information and a log are displayed on this screen.
- **Advanced.** The e-mail alert options and Universal Plug and Play (UPnP) settings are configured on the *Advanced* screen.

To save your changes, click the **Apply** button. To cancel any unsaved changes, click the **Cancel** button. To get additional information about a screen's features, click the **Help** button.

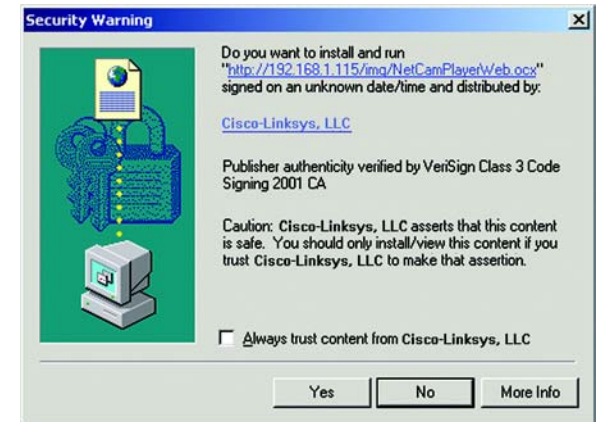


Figure 8-3: Security Warning



Figure 8-4: User Name and Password



## Basic

The *Basic* screen, as shown in Figure 8-5, allows you to alter the Camera's settings, including the network and wireless configuration.

### Device Settings

**Firmware Version.** The version number of the firmware currently installed is displayed here. Firmware should only be upgraded from the *Help* screen if you experience problems with the Camera. Visit [www.linksys.com](http://www.linksys.com) to find out if there is updated firmware.

**MAC Address.** The MAC Address of the Camera is displayed here.

**Device ID.** Displayed here is the Camera's identification name, which is used by the Camera and the Utility to exchange data.

**Camera Name.** You may assign any name to the Camera. Unique, memorable names are helpful, especially if you are using multiple Cameras on the same wireless network. You can enter up to 15 characters.

**Description.** Enter information about the Camera in this field. You can enter up to 32 characters.

**Date.** Enter the current date.

**Time.** Enter the current time.

**Time Zone.** Select the time zone for the Camera's location.

**Network Time Protocol.** If you want to adjust the Camera's current time for daylight savings, click the first checkbox. If you want to update the Camera's time through an NTP (Network Time Protocol) server on the Internet, click the second checkbox.

### LAN Settings

**Configuration Type.** If the Bridge will obtain an IP address automatically from a DHCP server, then select **Automatic Configuration - DHCP**. If you will assign the Camera a static IP address, then select **Static IP Address**, and complete the *IP Address*, *Subnet Mask*, *Gateway*, and *DNS* fields.

**IP Address, Subnet Mask, Gateway, Primary DNS, Secondary DNS.** Complete these fields if the Camera will use a static IP address. You need to enter at least one DNS address.

Figure 8-5: Basic

## Wireless Settings

**SSID.** Enter the network's SSID or network name here.

**Network Type.** Select the network's mode, **Infrastructure** or **Ad-hoc**.

**Domain.** Keep the default setting, **USA**.

**Channel No.** If the Camera is set to ad-hoc mode, select its channel setting from the drop-down menu.

**WEP.** To use WEP encryption, click the **Enable** radio button. Then click the **Edit WEP Settings** button. For more information, go to the "WEP Key Settings" section. To disable WEP encryption, click the **Disable** radio button.

To save your changes, click the **Apply** button. To cancel any unsaved changes, click the **Cancel** button. To get additional information about the screen's features, click the **Help** button.

### WEP Key Settings

Configure the Camera's WEP encryption settings on this screen (see Figure 8-6). Make sure all devices on your wireless network use the same settings.

**Default Transmit Key.** Select which WEP key (1-4) will be used when your network's access point or wireless router sends and receives data.

**WEP Encryption.** Select the level of WEP encryption you wish to use, **64 Bit Keys (10 Hex chars)** or **128 Bit Keys (26 Hex chars)**.

**Passphrase.** Instead of manually entering WEP keys, you can use a Passphrase to generate them. It is case-sensitive and should not be longer than 16 alphanumeric characters. (This Passphrase is compatible with Linksys wireless products only. If you are also using non-Linksys wireless products, you will need to enter your WEP keys manually on those products.) After entering the Passphrase, click the **Generate** button to create WEP key(s).

**Key 1-4.** If you are used a Passphrase, the WEP keys will be displayed after you have generated them. If you are not using a Passphrase, manually enter a set of values in each field. (For 128-bit WEP, only one WEP key is permitted.) If you are using 64-bit WEP encryption, then each key must consist of exactly 10 hexadecimal characters. If you are using 128-bit WEP encryption, then the key must consist of exactly 26 hexadecimal characters. Valid hexadecimal characters are "0" through "9" and "A" through "F".

**Authentication.** The default is set to **Open System**, for which the sender and the recipient do NOT use a WEP key for authentication. You can also choose **Shared Key**, when the sender and recipient use a WEP key for authentication. This setting should match the one on your network's access point or wireless router.



Figure 8-6: WEP Key Settings

To save your changes, click the **Apply** button. To clear the settings, click the **Clear** button. To exit this screen, click the **Close** button. To get additional information about the screen's features, click the **Help** button.

## Image

The *Image* screen allows you to alter the Camera's video settings.

### Video Settings

**Resolution.** Select the size you want for viewing or recording the Camera's video. Select **320\*240** for a larger size, and select **160\*120** for a smaller size.

**Image Quality.** Select the level of quality you want for viewing or recording the Camera's video. The range varies from **Very Low** to **Very High**.

You may find it helpful to know what the bit rates are for video viewing or recording at different resolutions and image quality levels. The following table lists estimated bit rates at each available resolution and video quality level.

### Estimated Bit Rates for Video Viewing or Recording

Resolution	Quality Level	Bit Rate
320 x 240	Very High	1000kbps
320 x 240	High	800kbps
320 x 240	Normal	300kbps
320 x 240	Low	120kbps
320 x 240	Very Low	40kbps
160 x 120	Very High	800kbps
160 x 120	High	400kbps
160 x 120	Normal	200kbps
160 x 120	Low	100kbps
160 x 120	Very Low	40kbps

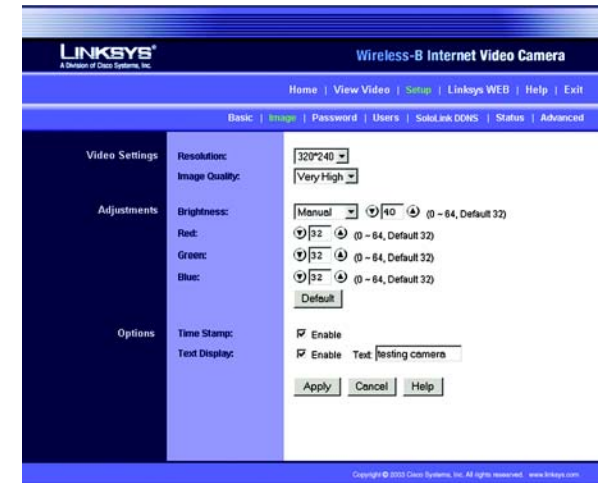


Figure 8-7: Image



**Note:** Video quality and/or performance may be affected by the number of users connected to the Camera.

## Adjustments

**Brightness.** Select **Automatic** if you want the Camera to adjust the brightness level automatically. Select **Manual** if you want to adjust the brightness level on this screen. Then increase or decrease the brightness using the arrow buttons.

**Red, Green, and Blue.** Adjust the level of red, green, or blue using the arrow buttons. To return the settings to default levels, click the **Default** button.

## Options

**Time Stamp.** If you want a time stamp shown on the video, click the checkbox next to *Enable*.

**Text Display.** If you want text shown on the video, click the checkbox next to *Enable*. Then complete the *Text* field with up to 20 characters.

To save your changes, click the **Apply** button. To cancel any unsaved changes, click the **Cancel** button. To get additional information about the screen's features, click the **Help** button.

## Password

The *Password* screen allows you to change the name and password used for administrator login. Changing the default name and password is recommended to secure access to the Camera's settings.

### Administrator

**Login Name.** Complete this field with a name of your choice.

**Password and Verify Password.** Enter your new password in both fields. The password should have eight characters or fewer.

To save your changes, click the **Apply** button. To cancel any unsaved changes, click the **Cancel** button. To get additional information about the screen's features, click the **Help** button.



Figure 8-8: Password

## Users

The *Users* screen allows you to designate access rights for Camera users.

### User Access

**Allow access by.** The default is **All users**. If you keep the default setting, then all users will be allowed to view the Camera's video. If you select **Only users in database**, then only the users you enter in the database will be allowed to view the Camera's video. They will be asked to log in using their user name and password whenever they request access to the Camera's video.

### User Database

Users are listed in the *User Database* box.

**Add.** To add a user, click the **Add** button. You will see the screen shown in Figure 8-10.

**Modify.** To modify a user's settings, click the **Modify** button. You will see the screen shown in Figure 8-10.

To add or modify a user, follow these instructions:

1. Complete the *User Name*, *User Password*, and *Confirm Password* fields.
2. To save your changes, click the **Apply** button. To cancel any unsaved changes, click the **Cancel** button. To get additional information about the screen's features, click the **Help** button. Click the **Close** button to exit this screen.

**Delete.** To delete a user, select the user listed in the *User Database* box, and then click the **Delete** button.

To save your changes, click the **Apply** button. To cancel any unsaved changes, click the **Cancel** button. To get additional information about the screen's features, click the **Help** button.

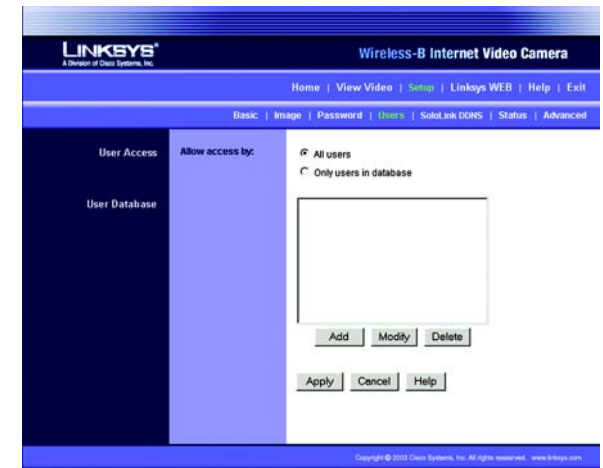


Figure 8-9: Users

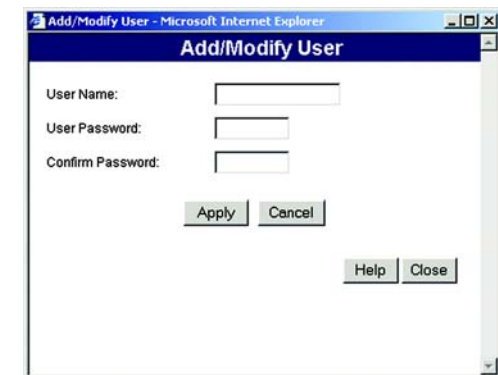


Figure 8-10: Add/Modify User

## SoloLink DDNS

The *SoloLink DDNS* screen allows you to set up and configure your SoloLink DDNS Service. DDNS (Dynamic Domain Name System) lets you assign a fixed host and domain name to a dynamic Internet IP address. If you have already set up your SoloLink account, then you can use this screen to register additional Cameras. For instructions, go to the “SoloLink Registration of Additional Cameras” section on the following page.



**Note:** If you use the Camera’s DDNS feature, then you must also configure the port forwarding feature on your network router. Go to [www.linksys.com/portfwd](http://www.linksys.com/portfwd) for instructions on how to configure a Linksys router. For other routers, refer to your router’s documentation.

### SoloLink DDNS

**Username.** Enter the username you have set up on your SoloLink account. If you are a new user, click **New User?** - **Click here to Register**. The *New User Registration* screen will appear, as shown in Figure 8-12. Click the **Continue** button, or click the **Back** screen to return to the previous screen. Your web browser will automatically start up, and you will visit a website to set up your SoloLink account. Follow the on-screen instructions. For more information, refer to “Chapter 7: Setting up the Linksys SoloLink DDNS Service,” which will guide you through setup of your SoloLink account.

**Password.** Enter the password you have set up on your SoloLink account. If you have forgotten your password, click **Forgot your Password?**

The *Password Request* screen will appear, as shown in Figure 8-13. Complete the *Domain name* field. Click the **Request Password** button to request your username and password, which will be e-mailed to the e-mail address registered with your SoloLink DDNS account. Click the **Cancel** button to cancel your change. Click the **Back** button to return to the previous screen.

**Your Domain.** Enter the host and domain name you have set up on your SoloLink account. It should be in this format: <Location ID>.ourlinksys.com. For example, if *myhouse* is the Location ID, then the host and domain name would be *myhouse.ourlinksys.com*.

**Device Name.** Enter the name you have given the Camera.

**WAN Port.** Enter the number of the port you will use to remotely access the Camera. If you need to find an available port, click **Find Available Port** and follow the on-screen instructions.

**DDNS Service Update.** Depending on how often you want the DDNS service to update the dynamic IP address, select the appropriate time interval from the drop-down menu. To update the dynamic IP address immediately, click the **Update Now** button.



Figure 8-11: SoloLink DDNS



Figure 8-12: New User Registration



## Status

**Registration Status.** The status of the Camera's registration is displayed here. To use the SoloLink DDNS service for the Camera, it must be registered with your SoloLink DDNS account.

**Address Update Status.** The status of the most recent DDNS service update is displayed here. You will be informed if the username and password authentication has been successful, as well as if the dynamic IP address has been updated.

**Last Update Attempt.** The date and time of the most recent IP address update attempt are displayed here.

**Last Successful Update.** The date and time of the most recent IP address update are displayed here.

**Options.** If you want to manage your SoloLink DDNS account, click the **Manage your SoloLink DDNS Account** button. Your web browser will automatically start up, and you will visit a website to manage your SoloLink account. (See Figure 8-14.) Follow the on-screen instructions.

If you want to remove the Camera from the DDNS service account, click the **Remove Camera** button. The *Device Removal* screen will appear, as shown in Figure 8-15. To remove the Camera, click the **Remove** button. Click the **Back** button to return to the previous screen.

To save your changes, click the **Apply** button. To cancel any unsaved changes, click the **Cancel** button. To display the most recent information, click the **Refresh** button. To get additional information about the screen's features, click the **Help** button.

## SoloLink Registration of Additional Cameras

After you have set up your SoloLink account, you can add more Cameras to your account, one at a time. Follow these instructions for each Camera you add:

1. On the *SoloLink DDNS* screen of the Camera's Web-based Utility, enter your SoloLink account information in the *Username*, *Password*, and *Your Domain* fields.
2. In the *Device Name* field, give the Camera a unique name. The DDNS service will not work if multiple Cameras have the same Device Name.
3. In the *WAN Port* field, enter a unique port number. This is the number of the port you will use to access the Camera remotely. If you need to find an available port, click **Find Available Port** and follow the on-screen instructions. The DDNS service will not work if multiple Cameras use the same WAN port.



Figure 8-13: Password Request



Figure 8-14: Manage Your SoloLink DDNS Account



Figure 8-15: Device Removal

## Wireless-B Internet Video Camera

4. Depending on how often you want the DDNS service to update the dynamic IP address, select the appropriate time interval from the *DDNS Service Update* drop-down menu. To update the dynamic IP address immediately, click the **Update Now** button.
5. Click the **Apply** button on the *SoloLink DDNS* screen. The Camera will automatically register itself with your SoloLink account.
6. Set up port forwarding on your network router, so the SoloLink DDNS Service will be able to track the Wireless-B Internet Video Camera. Go to [www.linksys.com/portfwd](http://www.linksys.com/portfwd) for instructions on how to configure a Linksys router.

For other routers, refer to your router's documentation.



## Status

The *Status* screen allows you to view the Camera's status information and log.

### Status

**Firmware Version.** The version number of the firmware currently installed is displayed here. Firmware should only be upgraded from the *Help* screen if you experience problems with the Camera. Visit [www.linksys.com](http://www.linksys.com) to find out if there is updated firmware.

**MAC Address.** The MAC Address of the Camera is displayed here.

**Camera Name.** The name you gave to the Camera is displayed here.

**Description.** The information about the Camera that you entered is displayed here.

**Date.** The current date is shown here.

**Time.** The current time is shown here.

**IP Address.** The Camera's IP Address is displayed here.

**Subnet Mask.** The Camera's Subnet Mask is shown here.

**Gateway.** The Camera's Gateway address is displayed here.

**Network Type.** The wireless network's mode is shown here.

**SSID.** The wireless network's SSID or name is shown here.

**Channel.** The wireless network's channel setting is displayed here.

**Encryption.** The wireless network's encryption level is shown here.

### Log

**System Log.** This shows the Camera's activities. To empty the log, click the **Clear Log** button.

To get the Camera's most up-to-date information, click the **Refresh** button. To get additional information about the screen's features, click the **Help** button.

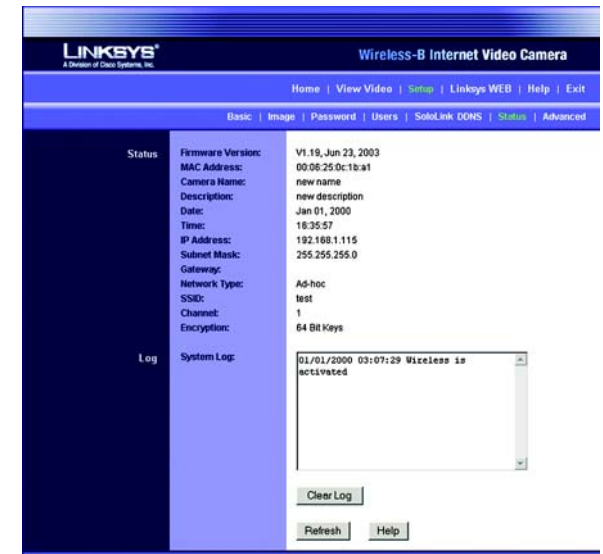


Figure 8-16: Status

## Advanced

The *Advanced* screen allows you to alter the Camera's e-mail alert features and UPnP configuration.

### Options

You can choose to be notified when the Camera detects motion in its video. You will be sent an e-mail with video attached.

**E-mail Alert.** If you want to be notified by e-mail when the Camera detects motion, then click the checkbox.

**Motion Sensitivity.** You have a choice of motion sensitivity levels for the Camera. The distances at which the Camera will detect motion will vary depending on the conditions of your specific environment. Select the appropriate level from the drop-down menu.

Specify how long you want the video attachment to be, up to a maximum of 5 seconds. Then specify the minimum time interval between e-mail alerts.

**Send to.** Enter the e-mail address that will receive e-mail alerts.

**Show "From" as.** Enter the text that you want displayed in the "From" field of any e-mail alert message.

**Subject.** Enter the subject heading that you want to be used.

**Outgoing Mail SMTP Server.** Enter the IP address of the outgoing mail SMTP server. If it requires authentication, click the checkbox, and enter the account name and password in the *Account Name* and *Password* fields.

### UPnP

When enabled, the Camera's Universal Plug and Play (UPnP) feature allows a UPnP-enabled computer to easily detect the Camera.

**UPnP.** The Camera's UPnP feature is disabled by default. If your computer is UPnP-enabled, then click the checkbox next to *Enable UPnP*.

**Alternate Port.** If you want the Camera to be able to use an alternate port for communications, click the checkbox. Then enter the port number you want in the *Port Number* field.

To save your changes, click the **Apply** button. To cancel any unsaved changes, click the **Cancel** button. To get additional information about the screen's features, click the **Help** button.

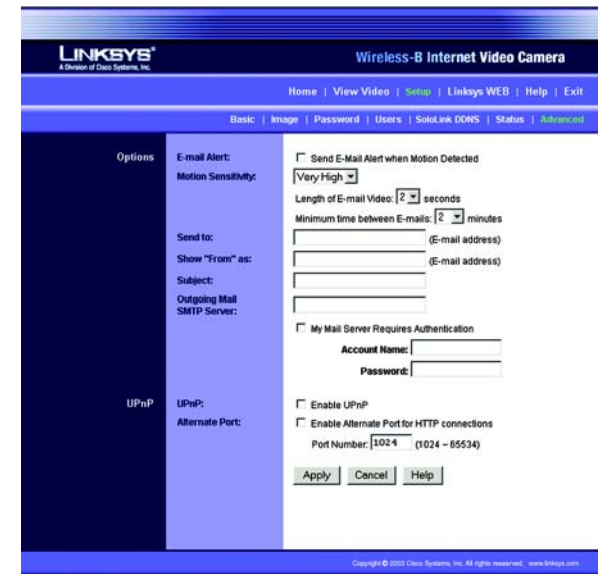


Figure 8-17: Advanced

## Help

Through the *Help* screen, you'll find links to additional resources for the Camera and its Utility. If you click the Help tab directly from the *Welcome* screen, then you will see the *User Help* screen and will only be able to access these resources. If you first log in to access the Camera's Setup and then click the Help tab, you will see the *Administrator Help* screen. You will be able to restore factory defaults and upgrade the Camera's firmware.



**Note:** The appearance and features of the *Help* screen will vary depending on whether you have logged in first to access the Setup.

**Setup.** Click any of the topics in the bar on the left to get help information.

**Linksys Support Page - Download Latest Viewer/Recorder Utility.** Click this link to download the most recent version of the Viewer & Recorder Utility from the Linksys website, [www.linksys.com](http://www.linksys.com).

**Click here to learn how to configure Port Forwarding in your Linksys Router.** If you are going to use the SoloLink DDNS Service, you need to set up port forwarding on your router. For instructions on how to configure a Linksys router, click this link. If you have a different router, refer to your router's documentation.

**Online User Guide in PDF Format and Adobe website (software for viewing PDF documents).** Click the **Online User Guide in PDF Format** link to view the latest version of the Camera's user guide. It will be in Adobe Acrobat Portable Document File (.pdf) format, so you will need Acrobat Reader to view this pdf. If you do not have the Acrobat Reader, click the **Adobe website** link to download it.

**Restore Factory Defaults.** To restore the Camera's factory default settings, click the **Restore Defaults** button.



**Note:** When you restore the Camera's factory defaults, you will lose the settings you have changed.

**Firmware.** New firmware versions are posted at [www.linksys.com](http://www.linksys.com) and can be downloaded for free. If the Camera is functioning well, there is no need to download a newer firmware version, unless that version has a new feature that you want to use. Loading new firmware onto the Camera does not always enhance its performance.



**Note:** When you upgrade the Camera's firmware, you may lose the settings you have changed.



Figure 8-18: Administrator Help

Linksys recommends that you upgrade the Camera's firmware within your network; in other words, use a computer within the Camera's local network. If you attempt to upgrade the Camera's firmware from a remote location—using a computer outside of the Camera's local network—the upgrade will fail.

To upgrade the firmware:

1. Go to the Linksys website, *www.linksys.com*, and download the firmware upgrade file for the Camera. Then extract the file.
2. From the *Help* screen, click the **Firmware Upgrade** button.
3. You will see the screen shown in Figure 8-19. Click the **Browse** button to find the extracted file, and then double-click it.
4. Click the **Start Upgrade** button, and follow the on-screen instructions. To cancel the upgrade, click the **Cancel** button. For further help, click the **Help** button.



Figure 8-19: Upgrade Firmware

# Appendix A: Troubleshooting

This appendix consists of two parts: “Common Problems and Solutions” and “Frequently Asked Questions.” This appendix provides solutions to problems that may occur during the installation and operation of the Wireless-B Internet Video Camera. Read the description below to solve your problems. If you can't find an answer here, check the Linksys website at [www.linksys.com](http://www.linksys.com).

## Common Problems and Solutions

### 1. *I can't view the Camera's video using Internet Explorer.*

Make sure the OCX plug-in was correctly installed. If you're not sure, re-install the plug-in by following these instructions:

- On the *Welcome* screen of the Camera's Web-based Utility, click the **View Video** button.
- A screen mentioning a security warning about an OCX plug-in will appear. Click the **Yes** button to allow the plug-in to be installed.
- You should then be able to view the Camera's streaming video.

If you still cannot view the video, make sure you have the rights to install the plug-in in your PC's Internet Explorer. If not, log into your computer as an administrator and install the plug-in.

Then you can check if the OCX plug-in has been installed. Follow these instructions:

- From Internet Explorer, go to **Tools** and **Internet Options**.
- On the General screen, click **Settings** under *Temporary Internet files*.
- Click **View Objects**. You should see a file named NetCamPlayerWeb Control installed.

### 2. *The OCX plug-in is installed in Internet Explorer, but I cannot view any video.*

Make sure you have Microsoft Internet Explorer 5.5 or higher installed. Then delete the OCX plug-in by following these instructions:

- From Internet Explorer, go to **Tools** and **Internet Options**.
- On the General screen, click **Settings** under *Temporary Internet files*.
- Click **View Objects**.
- You should see a file named NetCamPlayerWeb Control installed. Delete this file from the list.
- The next time you click View Video from the web browser, you will be prompted to re-install the OCX plug-in.

### 3. *When powering on the Camera, I can't immediately access the Camera from my computer.*

Make sure the Camera's Ready LED is continuously lit. When it is flashing, the Camera is initializing.

**4. I'm not able to play my recording video files.**

Make sure you have Microsoft Windows Media Player 7 or higher. If you don't, you can download the latest version from [www.microsoft.com](http://www.microsoft.com).

**5. I want to set up an account with the SoloLink DDNS Service, but I can't access the SoloLink website to sign up.**

Make sure the Camera is properly configured on your local network. Then check to see if your PC and Camera are properly connected and your network has an active Internet connection.

**6. When I view the video, it seems blurry.**

Adjust the Camera's focus by rotating its dark gray focus ring.

**7. When I view video remotely via the Internet, the video is very slow.**

Video performance is greatly affected by your Internet connection speed. You can lower the Camera's image quality to speed up the video. Through the Camera's Web-based Utility, click the **Setup** and **Image** tabs, and then lower the image quality on the *Image* screen.

**8. I cannot access the Setup tab of the Camera's Web-based Utility.**

Make sure you have administrator rights. Only an administrator can change the Camera's settings.

**9. I want to access the Camera when I'm away from home, but somehow I can't connect.**

If your network uses a dynamic IP address supplied by your ISP, then the IP address you use to reach the Camera will change as well. You need to use the Linksys SoloLink DDNS Service, so you can access the Camera using its domain name while the service keeps track of the IP address changes. To set up a Dynamic Domain Name Service (DDNS) account, click the **Setup** tab of the Camera's Web-based Utility. Click the **SoloLink DDNS** tab. If you are a new user, click **New User? - Click here to Register**. Follow the on-screen instructions.

You can also set up the Linksys SoloLink DDNS Service by inserting the Setup CD-ROM into your PC's CD-ROM drive. Click the **Setup SoloLink DDNS Service** button, and follow the on-screen instructions. For more information, see "Chapter 7: Setting up the Linksys SoloLink DDNS Service."

Important: To allow remote access to the Camera, you will also have to use the port forwarding feature on your network router.

**10. I already set up my SoloLink DDNS account, but I can't access the Camera from a remote location.**

Follow these instructions:

- When you enter the Camera's domain name, make sure it is in this format:  
**`http://<Device Name>.<Location ID>.ourlinksys.com`**

The <Device Name> is the name you gave the Camera when you ran the Setup Wizard. The <Location ID> is the name you selected when you set up your SoloLink DDNS account.

- If the Camera is set to DHCP, make sure your local network is working properly and your router has an active Internet connection.
- If the Camera uses a static IP address, insert the Setup CD-ROM into your network PC's CD-ROM drive. Click the **Setup** button and follow the on-screen instructions. When you see the *IP Settings* screen, make sure the Camera's Default Gateway and Primary DNS addresses are correct. For more information, refer to "Chapter 5: Setting up and Mounting the Wireless-B Internet Video Camera."

**11. On the Status screen of the Camera's Web-based Utility, I see this message in the System Log, "NTP server:no server suitable for synchronization found."**

This message indicates that the Camera is unable to locate the Network Time Protocol (NTP) server to synchronize its time setting. The Camera will automatically try again. Verify the following:

- If you have assigned a static IP address to the Camera, make sure you have completed at least one of the *DNS* fields on the *Basic* screen.
- Make sure the Camera is properly connected to your network, and its Internet connection is active.

## Frequently Asked Questions

***Can I view video using a Macintosh or Netscape Navigator?***

The Camera is designed for computers running a Windows operating system and Internet Explorer 5.5 or higher. You cannot view video on a Macintosh. If you only have Netscape, you can view video using the Viewer & Recorder Utility. See "Chapter 6: Installing and Using the Wireless-B Internet Video Camera Viewer & Recorder Utility."

***Can I directly connect the Camera to wired and wireless networks at the same time?***

No. Before powering on the Camera, you should decide if you want to connect the Camera to a wireless network via an access point or to a wired network. If your wireless and wired networks are bridged, then you can access the Camera from any networked computer, but the Camera must be directly connected to only one of the networks.

To connect the Camera to a wireless network, power on the Camera with no network cable attached. The Camera will be ready for use when the Ready and Wireless LEDs are lit continuously.

To connect the Camera to a wired network, connect the network cable to the Camera, and then power it on. The Camera will be ready for use when the Ready and LAN LEDs are lit continuously.

***Can I install the Camera outdoors?***

No, the Camera was not designed for outdoors usage.

***I've recorded video for a few hours. Why do I see multiple files saved on my computer?***

The recording function saves video in chunks; each chunk is a maximum of one hour in duration. For example, if you have recorded five continuous hours, then you will see five files saved on your computer. This keeps files from getting too large.

***Do I need to install the Linksys Viewer and Recorder Utility?***

Installation is optional. You can view video using Microsoft Internet Explorer 5.5 or higher. If you don't want to use the recording function, then you don't need to install the Viewer and Recorder Utility.

***Where can I find more information about the Linksys SoloLink DDNS Service?***

You can go to [www.linksys.com/sololink](http://www.linksys.com/sololink) for more information.

***Can I specify who gets to view the Camera's video?***

Yes. Access the Camera's Web-based Utility, and click the **Setup** tab. After you log in, click the **Users** tab. You will be able to restrict access to users you have entered in the database. See "Chapter 8: Using the Wireless-B Internet Video Camera Web-based Utility."

***Can I add a time stamp to the video?***

Yes. Access the Camera's Web-based Utility, and click the **Setup** tab. After you log in, click the **Image** tab. You will be able to add a time stamp as well as descriptive text to the video. See "Chapter 8: Using the Wireless-B Internet Video Camera Web-based Utility."

***How many users can view the Camera's video at the same time?***

Users at four different PCs can simultaneously view the Camera's video.

***What is the IEEE 802.11b standard?***

It is one of the IEEE standards for wireless networks. The 802.11b standard allows wireless networking hardware from different manufacturers to communicate, provided that the hardware complies with the 802.11b standard. The 802.11b standard states a maximum data transfer rate of 11Mbps and an operating frequency of 2.4GHz.

***What is ad-hoc mode?***

When a wireless network is set to ad-hoc mode, the wireless-equipped computers are configured to communicate directly with each other. The ad-hoc wireless network will not communicate with any wired network.

***What is infrastructure mode?***

When a wireless network is set to infrastructure mode, the wireless network is configured to communicate with a wired network through a wireless access point or router.



# Appendix B: Wireless Security

## A Brief Overview

Whenever data—in the form of files, emails, or messages—is transmitted over your wireless network, it is open to attacks. Wireless networking is inherently risky because it broadcasts information on radio waves. Just like signals from your cellular or cordless phone can be intercepted, signals from your wireless network can also be compromised. What are the risks inherent in wireless networking? Read on.

## What Are The Risks?

Computer network hacking is nothing new. With the advent of wireless networking, hackers use methods both old and new to do everything from stealing your bandwidth to stealing your data. There are many ways this is done, some simple, some complex. As a wireless user, you should be aware of the many ways they do this.

Every time a wireless transmission is broadcast, signals are sent out from your wireless PC or access point, but not always directly to its destination. The receiving PC or access point can hear the signal because it is within that radius. Just as with a cordless phone, cellular phone, or any kind of radio device, anyone else within that radius, who has their device set to the same channel or bandwidth can also receive those transmission.

Wireless networks are easy to find. Hackers know that, in order to join a wireless network, your wireless PC will typically first listen for “beacon messages”. These are identifying packets transmitted from the wireless network to announce its presence to wireless nodes looking to connect. These beacon frames are decrypted and contain much of the network’s information, such as the network’s SSID (Service Set Identifier) and the IP address of the network PC or access point. The SSID is analogous to the network’s name. With this information broadcast to anyone within range, hackers are often provided with just the information they need to access that network.

One result of this, seen in many large cities and business districts, is called “Warchalking”. This is the term used for hackers looking to access free bandwidth and free Internet access through your wireless network. The marks they chalk into the city streets are well documented in the Internet and communicate exactly where available wireless bandwidth is located for the taking.

Even keeping your network settings, such as the SSID and the channel, secret won’t prevent a hacker from listening for those beacon messages and stealing that information. This is why most experts in wireless networking strongly recommend the use of WEP (Wireless Equivalent Privacy). WEP encryption scrambles your wireless signals so they can only be recognized within your wireless network.

let's warchalk..!	
KEY	SYMBOL
OPEN NODE	ssid X bandwidth
CLOSED NODE	ssid O
WEP NODE	ssid access contact W bandwidth

blackbeltjones.com/warchalking

Figure B-1: Warchalking

But even WEP has its problems. WEP's encryption algorithm is referred to as "simple", which also means "weak", because the technology that scrambles the wireless signal isn't too hard to crack for a persistent hacker.

There are five common ways that hackers can break into your network and steal your bandwidth as well as your data. The five attacks are popularly known as:

1. Passive Attacks
2. Jamming Attacks
3. Active Attacks
4. Dictionary-building or Table Attacks
5. Man-in-the-Middle Attacks

### Passive Attacks

There's no way to detect a passive attack because the hacker is not breaking into your network. He is simply listening (eavesdropping, if you will) to the information your network broadcasts. There are applications easily available on the Internet that can allow a person to listen into your wireless network and the information it broadcasts. Information such as MAC addresses, IP addresses, usernames, passwords, instant message conversations, emails, account information, and any data transmitted wirelessly, can easily be seen by someone outside of your network because it is often broadcast in clear text. Simply put, any information transmitted on a wireless network leaves both the network and individual users vulnerable to attack. All a hacker needs is a "packet sniffer", software available on the Internet, along with other freeware or shareware hacking utilities available on the Internet, to acquire your WEP keys and other network information to defeat security.

### Jamming Attacks

Jamming Attacks, when a powerful signal is sent directly into your wireless network, can effectively shut down your wireless network. This type of attack is not always intentional and can often come about simply due to the technology. This is especially possible in the 2.4 GHz frequency, where phones, baby monitors, and microwave ovens can create a great deal of interference and jam transmissions on your wireless network. One way to resolve this is by moving your wireless devices into the 5 GHz frequency, which is dedicated solely to information transmissions.

## Active Attacks

Hackers use Active Attacks for three purposes: 1) stealing data, 2) using your network, and 3) modifying your network so it's easier to hack in the next time.

In an Active Attack, the hacker has gained access to all of your network settings (SSID, WEP keys, etc.) and is in your network. Once in your wireless network, the hacker has access to all open resources and transmitted data on the network. In addition, if the wireless network's access point is connected to a switch, the hacker will also have access to data in the wired network.

Further, spammers can use your Internet connection and your ISP's mail server to send tens of thousands of e-mails from your network without your knowledge.

Lastly, the hacker could make hacking into your network even easier by changing or removing safeguards such as MAC address filters and WEP encryption. He can even steal passwords and user names for the next time he wants to hack in.

## Dictionary-Building or Table Attacks

Dictionary-building, or Table attacks, is a method of gaining network settings (SSID, WEP keys, etc.) by analyzing about a day's worth of network traffic, mostly in the case of business networks. Over time, the hacker can build up a table of network data and be able to decrypt all of your wireless transmissions. This type of attack is more effective with networks that transmit more data, such as businesses.

## Man-in-the-Middle Attacks

A hacker doesn't need to log into your network as a user—he can appear as one of the network's own access points, setting himself up as the man-in-the-middle. To do this, the hacker simply needs to rig an access point with your network's settings and send out a stronger signal than your access point. In this way, some of your network's PCs may associate with this rogue access point, not knowing the difference, and may begin sending data through it and to this hacker.

The trade-off for the convenience and flexibility wireless networking provides is the possibility of being hacked into through one of the methods described here. With wireless networks, even with WEP encryption, open to the persistent hacker, how can you protect your data? The following section will tell you how to do just that.

## Maximizing Wireless Security

Security experts will all tell you the same thing: Nothing is guaranteed. No technology is secure by itself. An unfortunate axiom is that building the better mousetrap can often create a better mouse. This is why, in the

examples below, your implementation and administration of network security measures is the key to maximizing wireless security.

No preventative measure will guarantee network security but it will make it more difficult for someone to hack into your network. Often, hackers are looking for an easy target. Making your network less attractive to hackers, by making it harder for them to get in, will make them look elsewhere.

How do you do this? Before discussing WEP, let's look at a few security measures often overlooked.

### **1) Network Content**

Now that you know the risks assumed when networking wirelessly, you should view wireless networks as you would the Internet. Don't host any systems or provide access to data on a wireless network that you wouldn't put on the Internet.

### **2) Network Layout**

When you first lay out your network, keep in mind where your wireless PCs are going to be located and try to position your access point(s) towards the center of that network radius. Remember that access points transmit indiscriminately in a radius; placing an access point at the edge of the physical network area reduces network performance and leaves an opening for any hacker smart enough to discover where the access point is transmitting.

This is an invitation for a man-in-the-middle attack, as described in the previous section. To perform this type of attack, the hacker has to be physically close to your network. So, monitoring both your network and your property is important. Furthermore, if you are suspicious of unauthorized network traffic, most wireless products come with a log function, with which you can view activity on your network and verify if any unauthorized users have had access.

### **3) Network Devices**

With every wireless networking device you use, keep in mind that network settings (SSID, WEP keys, etc.) are stored in its firmware. If they get into the hands of a hacker, so do all of your settings. So keep an eye on them.

### **4) Administrator passwords**

Your network administrator is the only person who can change network settings. If a hacker gets a hold of the administrator's password, he, too, can change those settings. So, make it harder for a hacker to get that information. Change the administrator's password regularly.

## 5) SSID

There are a few things you can do to make your SSID more secure:

- a. Disable Broadcast
- b. Make it unique
- c. Change it often

Most wireless networking devices will give you the option of broadcasting the SSID. This is a option for convenience, allowing anyone to log into your wireless network. In this case, however, anyone includes hackers. So don't broadcast the SSID.

A default SSID is set on your wireless devices by the factory. (The Linksys default SSID is "linksys".) Hackers know these defaults and can check these against your network. Change your SSID to something unique and not something related to your company or the networking products you use.

Changing your SSID regularly will force any hacker attempting to gain access to your wireless network to start looking for that new SSID.

With these three steps in mind, please remember that while SSIDs are good for segmenting networks, they fall short with regards to security. Hackers can usually find them quite easily.

## 6) MAC addresses

Enable MAC address filtering if your wireless products allow it. MAC address filtering will allow you to provide access to only those wireless nodes with certain MAC addresses. This makes it harder for a hacker using a random MAC address or spoofing (faking) a MAC address.

## 7) Firewalls

Once a hacker has broken into your wireless network, if it is connected to your wired network, they'll have access to that, too. This means that the hacker has effectively used your wireless network as a backdoor through your firewall, which you've put in place to protect your network from just this kind of attack via the Internet.

You can use the same firewall technology to protect your wired network from hackers coming in through your wireless network as you did for the Internet. Rather than connecting your access point to an unprotected switch, swap those out for a router with a built-in firewall. The router will show the access point coming in through its Internet port and its firewall will protect your network from any transmissions entering via your wireless network.

PCs unprotected by a firewall router should at least run firewall software, and all PCs should run up-to-date antiviral software.

### **8) WEP**

Wired Equivalent Privacy (WEP) is often looked upon as a panacea for wireless security concerns. This is overstating WEP's ability. Again, this can only provide enough security to make a hacker's job more difficult.

WEP encryption implementation was not put in place with the 802.11 standard. This means that there are about as many methods of WEP encryption as there are providers of wireless networking products. In addition, WEP is not completely secure. One piece of information still not encrypted is the MAC address, which hackers can use to break into a network by spoofing (or faking) the MAC address.

Programs exist on the Internet that are designed to defeat WEP. The best known of these is AirSnort. In about a day, AirSnort can analyze enough of the wireless transmissions to crack the WEP key. Just like a dictionary-building attack, the best prevention for these types of programs is by not using static settings, periodically changing WEP keys, SSID, etc.

There are several ways that WEP can be maximized:

- a) Use the highest level of encryption possible
- b) Use multiple WEP keys
- c) Change your WEP key regularly

Current encryption technology offers 64-bit and 128-bit WEP encryption. If you are using 64-bit WEP, swap out your old wireless units for 128-bit encryption right away. Where encryption is concerned, the bigger and more complex, the better. A WEP key is a string of hexadecimal characters that your wireless network uses in two ways. First, nodes in your wireless network are identified with a common WEP key. Second, these WEP keys encrypt and decrypt data sent over your wireless network. So, a higher level of security ensures that hackers will have a harder time breaking into your network.

Setting one, static WEP key on your wireless network leaves your network open the threats even as you think it is protecting you. While it is true that using a WEP key increases wireless security, you can increase it further by using multiple WEP keys.

Keep in mind that WEP keys are stored in the firmware of wireless cards and access points and can be used to hack into the network if a card or access point falls into the wrong hands. Also, should someone hack into your network, there would be nothing preventing someone access to the entire network, using just one static key.

The solution, then, is to segment your network up into multiple groups. If your network had 80 users and you used four WEP keys, a hacker would have access to only ¼ of your wireless network resources. In this way, multiple keys reduce your liability.

Finally, be sure to change your WEP key regularly, once a week or once a day. Using a “dynamic” WEP key, rather than one that is static, makes it even harder for a hacker to break into your network and steal your resources.

### WEP Encryption

There are two ways to enable WEP encryption for the Camera. The first way is through the Setup Wizard, and the second way is through the Web-based Utility. To use the Setup Wizard, refer to “Chapter 5: Setting up and Mounting the Wireless-B Internet Video Camera.” To use the Web-based Utility, follow these instructions:

1. Click the **Setup** tab of the Web-based Utility.
2. On the *Basic* screen, click **Enable** next to WEP.
3. Click the **Edit WEP Settings** button.
4. The *WEP Key Settings* screen will appear. See Figure B-2.
5. Select the Default Transmit Key used by your wireless network.
6. From the *WEP Encryption* drop-down menu, select **64 Bit Keys (10 Hex chars)** or **128 Bit Keys (26 Hex chars)**, depending on the level of encryption your wireless network uses.
7. Enter a Passphrase in the *Passphrase* field, and click the **Generate** button to create WEP key(s). The Passphrase is case-sensitive and should have 16 alphanumeric characters or fewer.

If you do not want to use a Passphrase, then enter the WEP keys manually in the *Key 1 to Key 4* fields. Each WEP key must consist of valid hexadecimal characters, the letters “A” through “F” and numbers “0” through “9”. For 64-bit WEP encryption, the key must consist of exactly 10 hexadecimal characters. For 128-bit WEP encryption, the key must consist of exactly 26 hexadecimal characters.

8. From the *Authentication* drop-down menu, select your wireless network’s authentication type, **Open System** or **Shared Key**. The default is set to Open System, for which the sender and recipient do NOT use a WEP key for authentication. You can also choose Shared Key, when the sender and recipient use a WEP key for authentication. This setting should match the one on your network’s access point or wireless router.
9. Click the **Apply** button to save your changes.



**Important:** Always remember that each device in your wireless network **MUST** use the same WEP encryption method and encryption key or your wireless network will not function properly.

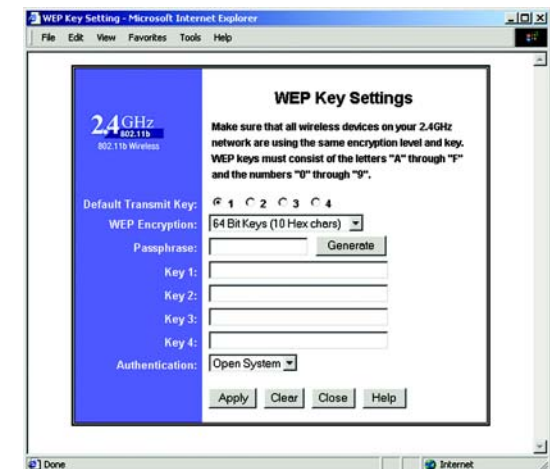


Figure B-2: WEP Key Settings

# Appendix C: Upgrading Firmware



**Note:** Linksys recommends that you upgrade the Camera's firmware within your network; in other words, use a computer within the Camera's local network. If you attempt to upgrade the Camera's firmware from a remote location—using a computer outside of the Camera's local network—the upgrade will fail.

The Camera's firmware is upgraded through the Web-based Utility's Help tab. Follow these instructions:

1. Download the firmware from Linksys's website at [www.linksys.com](http://www.linksys.com). Then extract the file.
2. Access the Camera's Web-based Utility, and click the **Help** tab.
3. On the *Help* screen, click the **Firmware Upgrade** button.
4. You will see the screen shown in Figure C-1. Click the **Browse** button to find the extracted file, and then double-click the filename.
5. Click the **Start Upgrade** button, and follow the on-screen instructions. Click the **Cancel** button to cancel the firmware upgrade. For more information, click the **Help** button.



**Figure C-1: Upgrade Firmware**



# Appendix D: Windows Help

All wireless products require Microsoft Windows. Windows is the most used operating system in the world and comes with many features that help make networking easier. These features can be accessed through Windows Help and are described in this appendix.

## TCP/IP

Before a computer can communicate with an access point or router, TCP/IP must be enabled. TCP/IP is a set of instructions, or protocol, all PCs follow to communicate over a network. This is true for wireless networks as well. Your PCs will not be able to utilize wireless networking without having TCP/IP enabled. Windows Help provides complete instructions on enabling TCP/IP.

## Shared Resources

If you wish to share printers, folders, or files over your network, Windows Help provides complete instructions on using shared resources.

## Network Neighborhood/My Network Places

Other PCs on your network will appear under Network Neighborhood or My Network Places (depending upon the version of Windows you're running). Windows Help provides complete instructions on adding PCs to your network.

# Appendix E: Glossary

**802.11a** - An IEEE wireless networking standard that specifies a maximum data transfer rate of 54Mbps and an operating frequency of 5GHz.

**802.11b** - An IEEE wireless networking standard that specifies a maximum data transfer rate of 11Mbps and an operating frequency of 2.4GHz.

**802.11g** - An IEEE wireless networking standard that specifies a maximum data transfer rate of 54Mbps, an operating frequency of 2.4GHz, and backward compatibility with 802.11b devices.

**Access Point** - Device that allows wireless-equipped computers and other devices to communicate with a wired network. Also used to expand the range of a wireless network.

**Adapter** - This is a device that adds network functionality to your PC.

**Ad-hoc** - A group of wireless devices communicating directly with each other (peer-to-peer) without the use of an access point.

**Backbone** - The part of a network that connects most of the systems and networks together, and handles the most data.

**Bandwidth** - The transmission capacity of a given device or network.

**Beacon Interval** - The frequency interval of the beacon, which is a packet broadcast by a router to synchronize a wireless network.

**Bit** - A binary digit.

**Boot** - To start a device and cause it to start executing instructions.

**Bridge** - A device that connects two different kinds of local networks, such as a wireless network to a wired Ethernet network.

**Broadband** - An always-on, fast Internet connection.

**Browser** - A browser is an application program that provides a way to look at and interact with all the information on the World Wide Web.

**Buffer** - A block of memory that temporarily holds data to be worked on later when a device is currently too busy to accept the data.

**Cable Modem** - A device that connects a computer to the cable television network, which in turn connects to the Internet.

**CSMA/CA** (Carrier Sense Multiple Access/Collision Avoidance) - A method of data transfer that is used to prevent data loss in a network.

**CTS** (Clear To Send) - A signal sent by a device to indicate that it is ready to receive data.

**Daisy Chain** - A method used to connect devices in a series, one after the other.

**Database** - A collection of data that is organized so that its contents can easily be accessed, managed, and updated.

**DDNS** (Dynamic Domain Name System) - The capability of having a website, FTP, or e-mail server-with a dynamic IP address-use a fixed domain name.

**Default Gateway** - A device that forwards Internet traffic from your local area network.

**DHCP** (Dynamic Host Configuration Protocol) - A protocol that lets one device on a local network, known as a DHCP server, assign temporary IP addresses to the other network devices, typically computers.

**DMZ** (Demilitarized Zone) - Removes the Router's firewall protection from one PC, allowing it to be "seen" from the Internet.

**DNS** (Domain Name Server) - The IP address of your ISP's server, which translates the names of websites into IP addresses.

**Domain** - A specific name for a network of computers.

**Download** - To receive a file transmitted over a network.

**DSL** (Digital Subscriber Line) - An always-on broadband connection over traditional phone lines.

**DSSS** (Direct-Sequence Spread-Spectrum) - A type of radio transmission technology that includes a redundant bit pattern to lessen the probability of data lost during transmission. Used in 802.11b networking.

**DTIM** (Delivery Traffic Indication Message) - A message included in data packets that can increase wireless efficiency.

**Dynamic IP Address** - A temporary IP address assigned by a DHCP server.

**Encryption** - Encoding data to prevent it from being read by unauthorized people.

**Ethernet** - An IEEE standard network protocol that specifies how data is placed on and retrieved from a common transmission medium.

**Finger** - A program that tells you the name associated with an e-mail address.

**Firewall** - Security measures that protect the resources of a local network from intruders.

**Firmware** - 1. In network devices, the programming that runs the device. 2. Programming loaded into read-only memory (ROM) or programmable read-only memory (PROM) that cannot be altered by end-users.

**Fragmentation** - Breaking a packet into smaller units when transmitting over a network medium that cannot support the original size of the packet.

**FTP (File Transfer Protocol)** - A standard protocol for sending files between computers over a TCP/IP network and the Internet.

**Full Duplex** - The ability of a networking device to receive and transmit data simultaneously.

**Gateway** - A system that interconnects networks.

**Half Duplex** - Data transmission that can occur in two directions over a single line, but only one direction at a time.

**Hardware** - The physical aspect of computers, telecommunications, and other information technology devices.

**HTTP (HyperText Transport Protocol)** - The communications protocol used to connect to servers on the World Wide Web.

**IEEE (The Institute of Electrical and Electronics Engineers)** - An independent institute that develops networking standards.

**Infrastructure** - Currently installed computing and networking equipment.

**Infrastructure Mode** - Configuration in which a wireless network is bridged to a wired network via an access point.

**IP (Internet Protocol)** - A protocol used to send data over a network.

**IP Address** - The address used to identify a computer or device on a network.

**IPCONFIG** - A Windows 2000 and XP utility that displays the IP address for a particular networking device.

**IPSec** (Internet Protocol Security) - A VPN protocol used to implement secure exchange of packets at the IP layer.

**ISM band** - Radio band used in wireless networking transmissions.

**ISP** (Internet Service Provider) - A company that provides access to the Internet.

**LAN** (Local Area Network) - The computers and networking products that make up the network in your home or office.

**MAC** (Media Access Control) Address - The unique address that a manufacturer assigns to each networking device.

**Mbps** (Megabits Per Second) - One million bits per second; a unit of measurement for data transmission.

**Multicasting** - Sending data to a group of destinations at once.

**NAT** (Network Address Translation) - NAT technology translates IP addresses of a local area network to a different IP address for the Internet.

**Network** - A series of computers or devices connected for the purpose of data sharing, storage, and/or transmission between users.

**NNTP** (Network News Transfer Protocol) - The protocol used to connect to Usenet groups on the Internet.

**Node** - A network junction or connection point, typically a computer or work station.

**OFDM** (Orthogonal Frequency Division Multiplexing) - A type of modulation technology that separates the data stream into a number of lower-speed data streams, which are then transmitted in parallel. Used in 802.11a, 802.11g, and powerline networking.

**Packet** - A unit of data sent over a network.

**Passphrase** - Used much like a password, a passphrase simplifies the WEP encryption process by automatically generating the WEP encryption keys for Linksys products.

**Ping** (Packet INternet Groper) - An Internet utility used to determine whether a particular IP address is online.

**POP3** (Post Office Protocol 3) - A standard protocol used to retrieve e-mail stored on a mail server.

**Port** - 1. The connection point on a computer or networking device used for plugging in a cable or an adapter. 2. The virtual connection point through which a computer uses a specific application on a server.

**PPPoE** (Point to Point Protocol over Ethernet) - A type of broadband connection that provides authentication (username and password) in addition to data transport.

**PPTP** (Point-to-Point Tunneling Protocol) - A VPN protocol that allows the Point to Point Protocol (PPP) to be tunneled through an IP network. This protocol is also used as a type of broadband connection in Europe.

**Preamble** - Part of the wireless signal that synchronizes network traffic.

**RJ-45** (Registered Jack-45) - An Ethernet connector that holds up to eight wires.

**Roaming** - The ability to take a wireless device from one access point's range to another without losing the connection.

**Router** - A networking device that connects multiple networks together, such as a local network and the Internet.

**RTS** (Request To Send) - A packet sent when a computer has data to transmit. The computer will wait for a CTS (Clear To Send) message before sending data.

**Server** - Any computer whose function in a network is to provide user access to files, printing, communications, and other services.

**SMTP** (Simple Mail Transfer Protocol) - The standard e-mail protocol on the Internet.

**SNMP** (Simple Network Management Protocol) - A widely used network monitoring and control protocol.

**Software** - Instructions for the computer. A series of instructions that performs a particular task is called a "program".

**Spread Spectrum** - Wideband radio frequency technique used for more reliable and secure data transmission.

**SSID** (Service Set Identifier) - Your wireless network's name.

**Static IP Address** - A fixed address assigned to a computer or device that is connected to a network.

**Static Routing** - Forwarding data in a network via a fixed path.

**Subnet Mask** - An address code that determines the size of the network.

**Switch** - 1. Device that is the central point of connection for computers and other devices in a network, so data can be shared at full transmission speeds. 2. A device for making, breaking, or changing the connections in an electrical circuit.

## Wireless-B Internet Video Camera

**TCP/IP** (Transmission Control Protocol/Internet Protocol) - A network protocol for transmitting data that requires acknowledgement from the recipient of data sent.

**Telnet** - A user command and TCP/IP protocol used for accessing remote PCs.

**TFTP** (Trivial File Transfer Protocol) - A version of the TCP/IP FTP protocol that uses UDP and has no directory or password capability.

**Throughput** - The amount of data moved successfully from one node to another in a given time period.

**Topology** - The physical layout of a network.

**TX Rate** - Transmission Rate.

**UDP** (User Datagram Protocol) - A network protocol for transmitting data that does not require acknowledgement from the recipient of the data that is sent.

**Upgrade** - To replace existing software or firmware with a newer version.

**Upload** - To transmit a file over a network.

**URL** (Uniform Resource Locator) - The address of a file located on the Internet.

**VPN** (Virtual Private Network) - A security measure to protect data as it leaves one network and goes to another over the Internet.

**WAN** (Wide Area Network) - The Internet.

**WEP** (Wired Equivalent Privacy) - A method of encrypting data transmitted on a wireless network for greater security.

**WINIPCFG** - A Windows 98 and Millennium utility that displays the IP address for a particular networking device.

**WLAN** (Wireless Local Area Network) - A group of computers and associated devices that communicate with each other wirelessly.

# Appendix F: Specifications

Standards	IEEE 8011.b, IEEE 802.3, 802.3u
Ports	1 x 10/100BaseT (RJ-45) LAN Connection
Button	1 Reset Button
Cabling Type	RJ-45
LEDs	Ready, Act/Link, LAN, Wireless
Security Features	User Authentication, WEP Encryption
WEP Key Bits	64/128 Bit
Dimensions (W x H x D)	3.15" x 5.91" x 0.38" (80 mm x 450 mm x 9.7 mm)
Unit Weight	8.6 oz. (0.232 kg)
Power	5V DC, External
Certifications	FCC, CE
Operating Temp.	0°C to 40°C (32°F to 104°F)
Storage Temp.	-10°C to 70°C (14°F to 158°F)
Operating Humidity	10% to 85%, Non-Condensing
Storage Humidity	5% to 90%, Non-Condensing



# Appendix G: Warranty Information

## LIMITED WARRANTY

Linksys warrants to the original end user purchaser ("You") that, for a period of one year, (the "Warranty Period") Your Linksys product will be free of defects in materials and workmanship under normal use. Your exclusive remedy and Linksys's entire liability under this warranty will be for Linksys at its option to repair or replace the product or refund Your purchase price less any rebates.

If the product proves defective during the Warranty Period call Linksys Technical Support in order to obtain a Return Authorization Number. BE SURE TO HAVE YOUR PROOF OF PURCHASE ON HAND WHEN CALLING. When returning a product, mark the Return Authorization Number clearly on the outside of the package and include a copy of your original proof of purchase. RETURN REQUESTS CANNOT BE PROCESSED WITHOUT PROOF OF PURCHASE. You are responsible for shipping defective products to Linksys. Linksys pays for UPS Ground shipping from Linksys back to You only. Customers located outside of the United States of America and Canada are responsible for all shipping and handling charges.

ALL IMPLIED WARRANTIES AND CONDITIONS OF MERCHANTABILITY OR FITNESS FOR A PARTICULAR PURPOSE ARE LIMITED TO THE DURATION OF THE WARRANTY PERIOD. ALL OTHER EXPRESS OR IMPLIED CONDITIONS, REPRESENTATIONS AND WARRANTIES, INCLUDING ANY IMPLIED WARRANTY OF NON-INFRINGEMENT, ARE DISCLAIMED. Some jurisdictions do not allow limitations on how long an implied warranty lasts, so the above limitation may not apply to You. This warranty gives You specific legal rights, and You may also have other rights which vary by jurisdiction.

TO THE EXTENT NOT PROHIBITED BY LAW, IN NO EVENT WILL LINKSYS BE LIABLE FOR ANY LOST DATA, REVENUE OR PROFIT, OR FOR SPECIAL, INDIRECT, CONSEQUENTIAL, INCIDENTAL OR PUNITIVE DAMAGES, HOWEVER CAUSED REGARDLESS OF THE THEORY OF LIABILITY, ARISING OUT OF OR RELATED TO THE USE OF OR INABILITY TO USE THE PRODUCT, EVEN IF LINKSYS HAS BEEN ADVISED OF THE POSSIBILITY OF SUCH DAMAGES. IN NO EVENT WILL LINKSYS' LIABILITY EXCEED THE AMOUNT PAID BY YOU FOR THE PRODUCT.

The foregoing limitations will apply even if any warranty or remedy provided under this Section fails of its essential purpose. Some jurisdictions do not allow the exclusion or limitation of incidental or consequential damages, so the above limitation or exclusion may not apply to You.

Please direct all inquiries to: Linksys, P.O. Box 18558, Irvine, CA 92623 USA.

# Appendix H: Regulatory Information

## FCC STATEMENT

This product has been tested and complies with the specifications for a Class B digital device, pursuant to Part 15 of the FCC Rules. These limits are designed to provide reasonable protection against harmful interference in a residential installation. This equipment generates, uses, and can radiate radio frequency energy and, if not installed and used according to the instructions, may cause harmful interference to radio communications. However, there is no guarantee that interference will not occur in a particular installation. If this equipment does cause harmful interference to radio or television reception, which is found by turning the equipment off and on, the user is encouraged to try to correct the interference by one or more of the following measures:

- Reorient or relocate the receiving antenna
- Increase the separation between the equipment or devices
- Connect the equipment to an outlet other than the receiver's
- Consult a dealer or an experienced radio/TV technician for assistance

FCC Caution: Any change or modification to the product not expressly approved by Linksys could void the user's authority to operate the device.

## FCC RF Radiation Exposure Statement

To comply with the FCC and ANSI C95.1 RF exposure limits, the antenna(s) for this device must comply with the following:

- Access points with 2.4 GHz or 5 GHz integrated antenna must operate with a separation distance of at least 20 cm from all persons using the cable provided and must not be co-located or operating in conjunction with any other antenna or transmitter.

End-users must be provided with specific operations for satisfying RF exposure compliance.

Note: Dual antennas used for diversity operation are not considered co-located.

## SOFTWARE LICENSE AGREEMENT

THIS LICENSE AGREEMENT IS BETWEEN YOU AND CISCO-LINKSYS, LLC ("Linksys"). BY DOWNLOADING OR INSTALLING THE SOFTWARE, OR USING THE PRODUCT CONTAINING THE SOFTWARE, YOU ARE CONSENTING TO BE BOUND BY THIS AGREEMENT. IF YOU DO NOT AGREE TO ALL OF THESE TERMS, THEN YOU MAY NOT DOWNLOAD, INSTALL OR USE THE SOFTWARE. YOU MAY RETURN UNUSED SOFTWARE (OR, IF THE SOFTWARE IS SUPPLIED AS PART OF ANOTHER PRODUCT, THE UNUSED PRODUCT) FOR A FULL REFUND UP TO 30 DAYS AFTER ORIGINAL PURCHASE.

**License.** Subject to the terms and conditions of this Agreement, Linksys grants the original end user purchaser of the Linksys product containing the Software ("You") a nonexclusive license to use the Software solely as embedded in or (where authorized in the applicable documentation) for communication with such product. This license may not be sublicensed, and is not transferable except to a person or entity to whom you transfer ownership of the complete Linksys product containing the Software, provided you permanently transfer all rights under this Agreement and do not retain any full or partial copies of the Software, and the recipient agrees to the terms of this Agreement.

"Software" includes, and this Agreement will apply to (a) the Linksys software provided in or with the applicable Linksys product, and (b) any upgrades, updates, bug fixes or modified versions ("Upgrades") or backup copies of the Software supplied to You by Linksys or an authorized reseller, provided you already hold a valid license to the original software and have paid any applicable fee for the Upgrade.

**Protection of Information.** The Software and documentation contain trade secrets and/or copyrighted materials of Linksys or its suppliers. You will not decompile, decrypt, reverse engineer or disassemble the Software (except to the extent expressly permitted by law notwithstanding this provision), and will not disclose or make available such trade secrets or copyrighted material in any form to any third party. Title to Software and documentation will remain solely with Linksys.

**Open Source Software.** The GPL source code incorporated into this product is available for free download at <http://www.linksys.com/gpl>. If You would like a copy of the GPL source code in this product on a CD, Linksys will copy and mail to You a CD with the code for \$9.99 plus the cost of shipping upon request.

**Term and Termination.** You may terminate this License at any time by destroying all copies of the Software and documentation. Your rights under this License will terminate immediately without notice from Linksys if You fail to comply with any provision of this Agreement.

**Limited Warranty.** The warranty terms and period specified in the applicable Linksys Product User Guide shall also apply to the Software.

**Disclaimer of Liabilities.** IN NO EVENT WILL LINKSYS BE LIABLE FOR ANY LOST DATA, REVENUE OR PROFIT, OR FOR SPECIAL, INDIRECT, CONSEQUENTIAL, INCIDENTAL OR PUNITIVE DAMAGES, REGARDLESS OF CAUSE

(INCLUDING NEGLIGENCE), ARISING OUT OF OR RELATED TO THE USE OF OR INABILITY TO USE THE SOFTWARE, EVEN IF LINKSYS HAS BEEN ADVISED OF THE POSSIBILITY OF SUCH DAMAGES. IN NO EVENT WILL LINKSYS' LIABILITY EXCEED THE AMOUNT PAID BY YOU FOR THE PRODUCT. The foregoing limitations will apply even if any warranty or remedy under this Agreement fails of its essential purpose. Some jurisdictions do not allow the exclusion or limitation of incidental or consequential damages, so the above limitation or exclusion may not apply to You.

**Export.** Software, including technical data, may be subject to U.S. export control laws and regulations and/or export or import regulations in other countries. You agree to comply strictly with all such laws and regulations.

**U.S. Government Users.** The Software and documentation qualify as "commercial items" as defined at 48 C.F.R. 2.101 and 48 C.F.R. 12.212. All Government users acquire the Software and documentation with only those rights herein that apply to non-governmental customers.

**General Terms.** This Agreement will be governed by and construed in accordance with the laws of the State of California, without reference to conflict of laws principles. The United Nations Convention on Contracts for the International Sale of Goods will not apply. If any portion of this Agreement is found to be void or unenforceable, the remaining provisions will remain in full force and effect. This Agreement constitutes the entire agreement between the parties with respect to the Software and supersedes any conflicting or additional terms contained in any purchase order or elsewhere.

## Wireless-B Internet Video Camera

### INDUSTRY CANADA (CANADA)

This Class B digital apparatus complies with Canadian ICES-003.

Cet appareil numérique de la classe B est conforme à la norme NMB-003 du Canada.

The use of this device in a system operating either partially or completely outdoors may require the user to obtain a license for the system according to the Canadian regulations.

### EC DECLARATION OF CONFORMITY (EUROPE)

Linksys Group declares that the Wireless-B Internet Video Camera conforms to the specifications listed below, following the provisions of the European R&TTE directive 1999/5/EC:

For 11Mbps, 2.4 GHz devices with 100 mW radios, the following standards were applied:

- EN 301 489-1, 301 489-17 General EMC requirements for Radio equipment.
- EN 609 50 Safety
- ETS 300-328-2 Technical requirements for Radio equipment.

Caution: This equipment is intended to be used in all EU and EFTA countries. Outdoor use may be restricted to certain frequencies and/or may require a license for operation. Contact local Authority for procedure to follow.

Note: Combinations of power levels and antennas resulting in a radiated power level of above 100 mW equivalent isotropic radiated power (EIRP) are considered as not compliant with the above mentioned directive and are not allowed for use within the European community and countries that have adopted the European R&TTE directive 1999/5/EC.

For more details on legal combinations of power levels and antennas, contact Linksys Corporate Compliance.

- Linksys Group vakuuttaa täten että Wireless-B Internet Video Camera tyyppinen laite on direktiivin 1999/5/EY oleellisten vaatimusten ja sitä koskevien näiden direktiivien muiden ehtojen mukainen.
- Linksys Group déclare que la Wireless-B Internet Video Camera est conforme aux conditions essentielles et aux dispositions relatives à la directive 1999/5/EC.
- Dans le cas d'une utilisation privée, à l'extérieur d'un bâtiment, au-dessus d'un espace public, aucun enregistrement n'est nécessaire pour une distance de moins de 300m. Pour une distance supérieure à 300m un enregistrement auprès de l'IBPT est requise. Pour une utilisation publique à l'extérieur de bâtiments, une licence de l'IBPT est requise. Pour les enregistrements et licences, veuillez contacter l'IBPT.

## Wireless-B Internet Video Camera

- France F:

2.4 GHz Bande : les canaux 10, 11, 12, 13 (2457, 2462, 2467, et 2472 MHz respectivement) sont complètement libres d'utilisation en France (en utilisation intérieur). Pour ce qui est des autres canaux, ils peuvent être soumis à autorisation selon le département. L'utilisation en extérieur est soumise à autorisation préalable et très restreint.

Vous pouvez contacter l'Autorité de Régulation des Télécommunications (<http://www.art-telecom.fr>) pour de plus amples renseignements.

2.4 GHz Band: only channels 10, 11, 12, 13 (2457, 2462, 2467, and 2472 MHz respectively) may be used freely in France for indoor use. License required for outdoor installations.

Please contact ART (<http://www.art-telecom.fr>) for procedure to follow.

# Appendix I: Contact Information

Need to contact Linksys?

Visit us online for information on the latest products and updates to your existing products at:

<http://www.linksys.com> or  
[ftp.linksys.com](ftp://ftp.linksys.com)

Can't find information about a product you want to buy on the web? Do you want to know more about networking with Linksys products? Give our advice line a call at:  
Or fax your request in to:

800-546-5797 (LINKSYS)  
949-261-8868

If you experience problems with any Linksys product, you can call us at:  
Don't wish to call? You can e-mail us at:

800-326-7114  
[support@linksys.com](mailto:support@linksys.com)

If any Linksys product proves defective during its warranty period, you can call the Linksys Return Merchandise Authorization department for obtaining a Return Authorization Number at:  
(Details on Warranty and RMA issues can be found in the Warranty Information section in this Guide.)

949-261-1288

## Free Manuals Download Website

<http://myh66.com>

<http://usermanuals.us>

<http://www.somanuals.com>

<http://www.4manuals.cc>

<http://www.manual-lib.com>

<http://www.404manual.com>

<http://www.luxmanual.com>

<http://aubethermostatmanual.com>

Golf course search by state

<http://golfingnear.com>

Email search by domain

<http://emailbydomain.com>

Auto manuals search

<http://auto.somanuals.com>

TV manuals search

<http://tv.somanuals.com>