

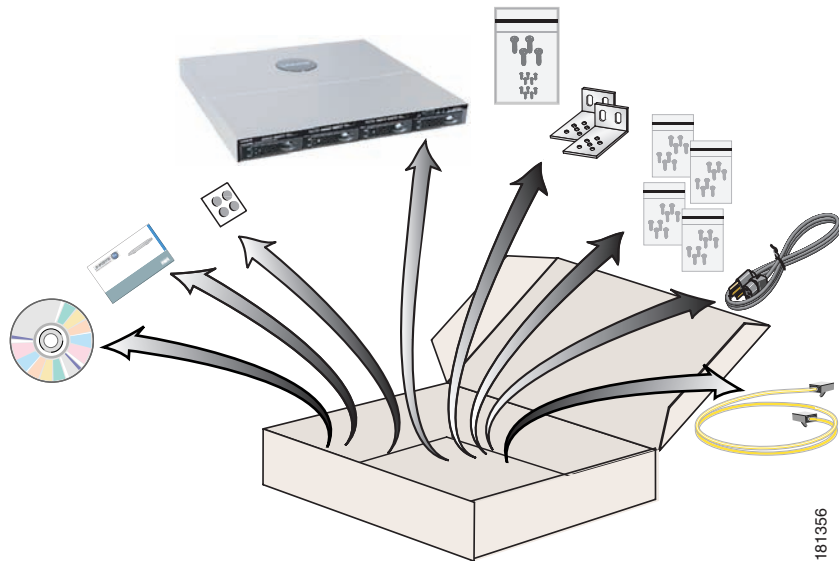


Linksys Business Series Network Attached Storage

Models NSS4000 and NSS6000



Linksys NSS4000/NSS6000



2

Install Disk Drives



(Not Included)



181358

Remove Drive Trays

3

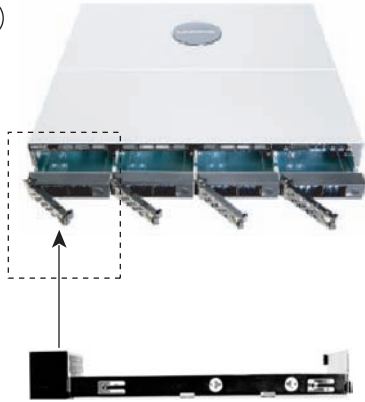


181359

4

Install Drive in Drive Trays

1



Drive Tray



Disk Drive

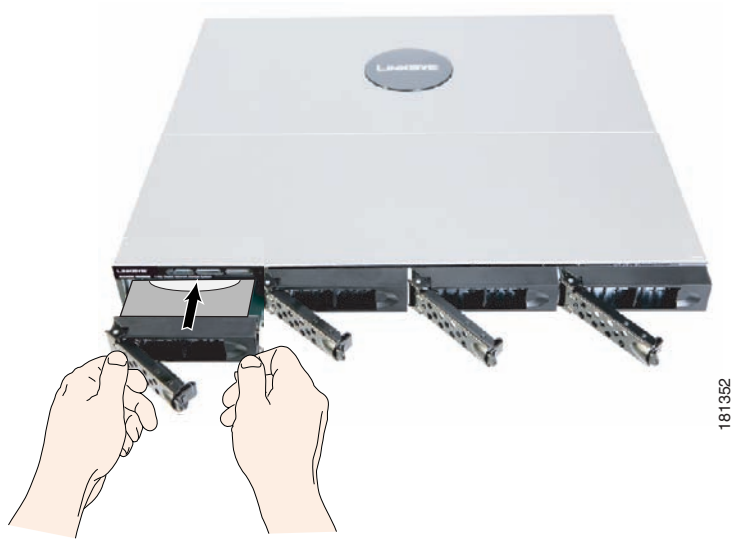


2



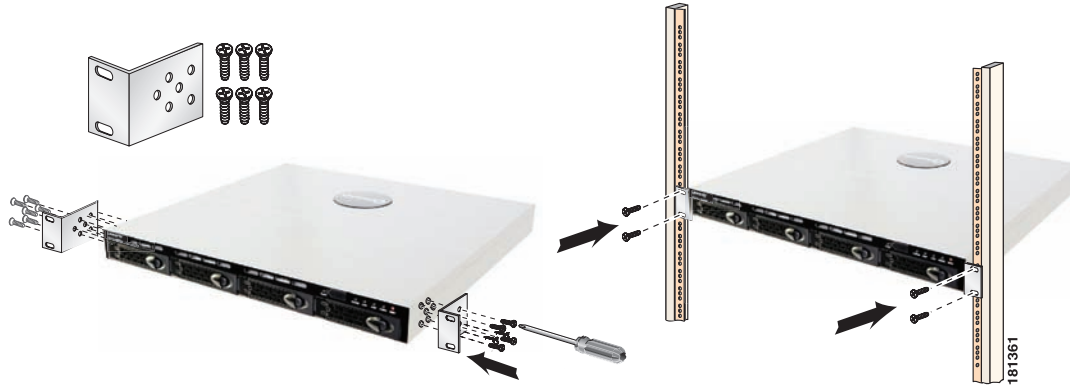
181360

Insert Drive Trays

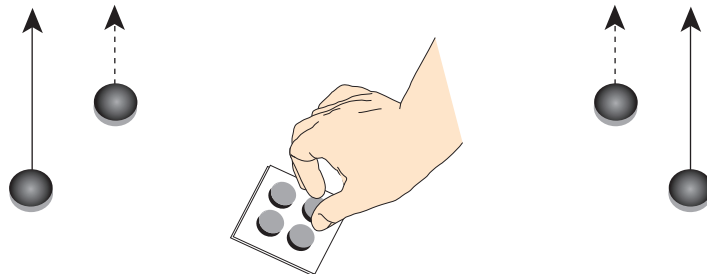


6

Install: Rack



Install: Desktop (optional)



181357

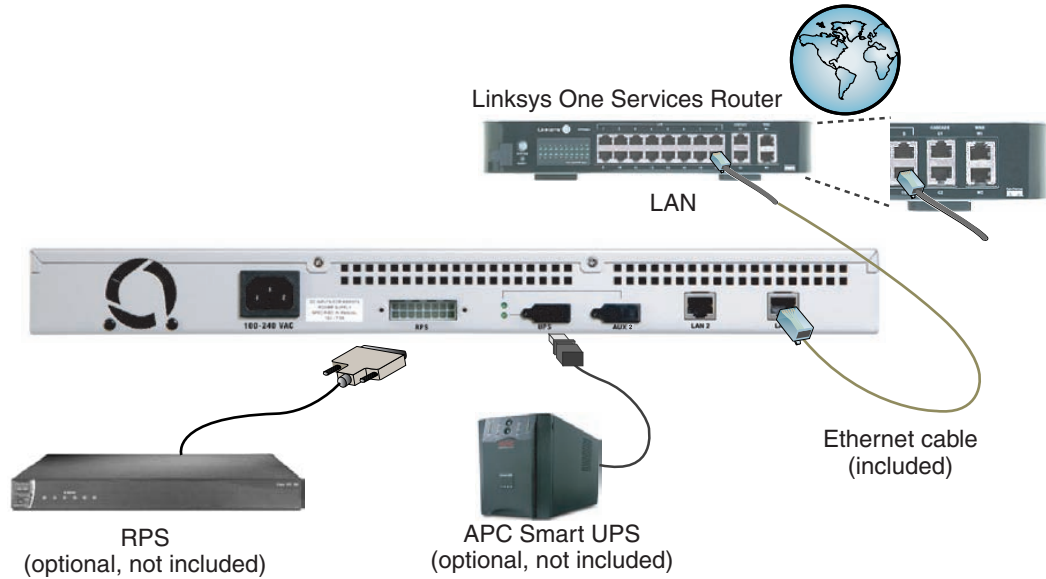
8

Rear Panel



181363

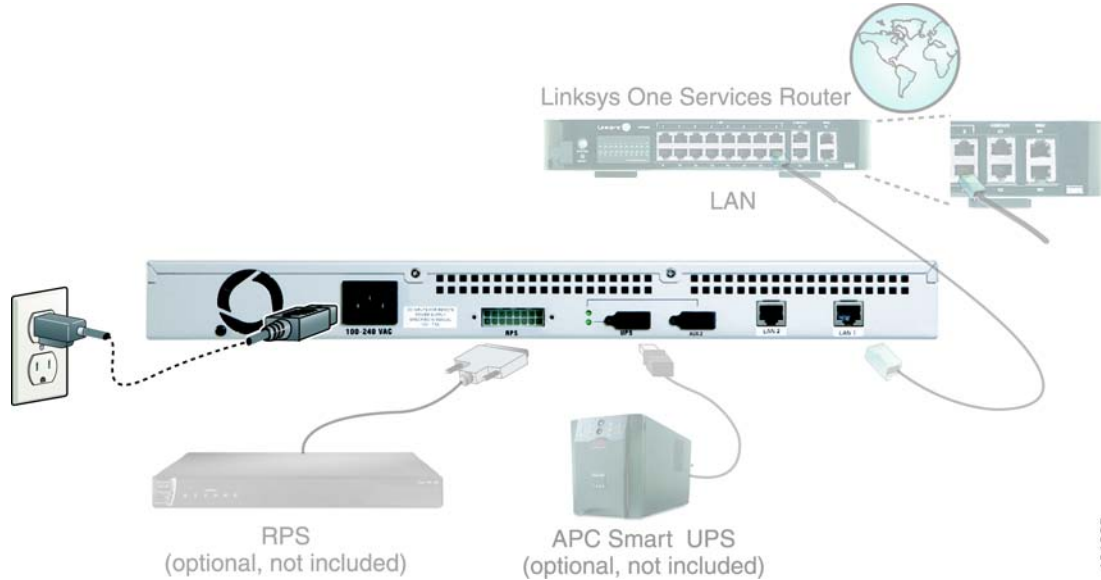
Connect Devices



181364

10

Connect to Power



181365

Regulatory Compliance and Safety Information

The Linksys Business Series models NSS4000 and NSS6000 meet the following regulatory compliance and safety standards:

Specification	Description
Regulatory Compliance	Products with the CE Marking indicate compliance with the 89/336/EEC and 73/23/EEC directives, which include the safety and EMC standards listed below.
Safety	UL 60950-1 IEC60950-1 CB /PSB CSA C22.2 No.60950-1-03 EN 60950-1
EMC	FCC Part 15 (CFR 47) Class A ICES-003 Class A EN 55022 Class A CISPR22 Class A EN 55024 EN 61000-3-2 EN 61000-3-3

FCC Part 15 Class A Compliance

This Equipment has been tested and found to comply with the limits for a Class A digital device, pursuant to part 15 of the FCC Rules. These limits are designed to provide reasonable protection against harmful interference when the equipment is operated in a commercial environment. This equipment generates, uses, and can radiate radio frequency energy and, if not installed and used in accordance with the instruction manual, may cause harmful interference to radio communications.

Operation of this equipment in a residential area is likely to cause harmful interference in which case the user will be required to correct the interference at his own expense.

You can determine whether your equipment is causing interference by turning it off. If the interference stops, it was probably caused by the Linksys equipment or one of its peripheral devices. If the equipment causes interference to radio or television reception, try to correct the interference by using one or more of the following measures:

- Reorient or relocate the receiving antenna
- Increase the separation between the equipment and receiver
- Connect the equipment into an outlet on a circuit different from that to which the receiver is connected.
- Consult the dealer or an experienced radio/TV technician for help.
- Move the equipment to one side or the other of the television or radio.

- Modifications to this product not authorized by Linksys could void the FCC approval and negate your authority to operate this product.



Warning

You are cautioned that changes or modifications not expressly approved by the party responsible for compliance could void your authority to operate the equipment.

Industry Canada Statement

This device complies with Canadian ICES-003 rule.

Cet appareil est conforme a la norme NMB-003 d'Industry Canada.

EC Declaration of Conformity (Europe)

In compliance with the EMC Directive 89/336/EEC, Low Voltage Directive 73/23/EEC, and Amendment Directive 93/68/EEC, this product meets the requirements of the following standards:

- EN55022 Emission
- EN55024 Immunity

Safety Information

The following statements are warnings or safety guidelines. A warning means danger. You are in a situation that could cause bodily injury. Before working on equipment, be aware of the hazards involved with electrical circuitry and standard safety practices to prevent accidents.



Warning

IMPORTANT SAFETY INSTRUCTIONS

This warning symbol means danger. You are in a situation that could cause bodily injury. Before you work on any equipment, be aware of the hazards involved with electrical circuitry and be familiar with standard practices for preventing accidents. Use the statement number provided at the end of each warning to locate its translation in the translated safety warnings that accompanied this device.

SAVE THESE INSTRUCTIONS



Warning

Work During Lightning Activity

Do not work on the system or connect or disconnect cables during periods of lightning activity.



Warning

Installation Instructions

Read the installation instructions before connecting the system to the power source.



Warning

SELV Circuit

To avoid electric shock, do not connect safety extra-low voltage (SELV) circuits to telephone-network voltage (TNV) circuits. LAN ports contain SELV circuits, and WAN ports contain TNV circuits. Some LAN and WAN ports both use RJ-45 connectors. Use caution when connecting cables.



Warning

Equipment Installation

Only trained and qualified personnel should be allowed to install, replace, or service this equipment.



Warning

Comply with Local National Electrical Codes

Installation of the equipment must comply with local and national electrical codes.



Warning

Product Disposal

Ultimate disposal of this product should be handled according to all national laws and regulations.

Environmental Specifications

Dimensions	17.31" x 16.62" x 1.75" (439 mm x 422 mm x 44.45 mm)
Unit Weight	21 lbs (9.52 kg) (with drives installed)
Power	150 Watt, 12V, AC Power Adapter
Certification	CE Class A, FCC Class A, UL, CUL
Security	On disk data encryption with encryption key
Operating Temp	32° to 113°F (0 to 40° C)
Storage Temp	-4° to 158°F (-20 to 70° C)
Operating Humidity	10 to 90 % RH
Storage Humidity	10 to 95% RH

Power Supply Safety Warnings

When using the Linksys Business Series models NSS4000 and NSS6000, observe the following power supply safety warnings:



TN Power

The device is designed to work with TN power systems.



Ground Conductor Warning

Never defeat the ground conductor or operate the equipment in the absence of a suitably installed ground conductor. Contact the appropriate electrical inspection authority or an electrician if you are uncertain that suitable grounding is available.



Power Supply Installation Warning

The power supply must be placed indoors.



Circuit Breaker

This product relies on the building's installation for short-circuit (overcurrent) protection. Ensure that the protective device is rated not greater than: 120 VAC, 15A U.S. (240 VAC, 10A international)



Main Disconnecting Device

The plug-socket combination must be accessible at all times, because it serves as the main disconnecting device.



Only use the Linksys-specified power supply. Refer to the installation manual provided with this product.

Linksys Software License Agreement v.2.14.05

THIS LICENSE AGREEMENT IS BETWEEN YOU AND CISCO-LINKSYS LLC ("Linksys"). BY DOWNLOADING OR INSTALLING THE SOFTWARE, OR USING THE PRODUCT CONTAINING THE SOFTWARE, YOU ARE CONSENTING TO BE BOUND BY THIS AGREEMENT. IF YOU DO NOT AGREE TO ALL OF THESE TERMS, THEN YOU MAY NOT DOWNLOAD, INSTALL OR USE THE SOFTWARE. YOU MAY RETURN UNUSED SOFTWARE (OR, IF THE SOFTWARE IS SUPPLIED AS PART OF ANOTHER PRODUCT, THE UNUSED PRODUCT) FOR A FULL REFUND UP TO 30 DAYS AFTER ORIGINAL PURCHASE, SUBJECT TO THE RETURN PROCESS AND POLICIES OF THE PARTY FROM WHICH YOU PURCHASED SUCH PRODUCT OR SOFTWARE.

License. Subject to the terms and conditions of this Agreement, Linksys grants the original end user purchaser of the Linksys product containing the Software ("You") a nonexclusive license to use the Software solely as embedded in or (where authorized in the applicable documentation) for communication with such product. This license may not be sublicensed, and is not transferable except to a person or entity to whom you transfer ownership of the complete Linksys product containing the Software, provided you permanently transfer all rights under this Agreement and do not retain any full or partial copies of the Software, and the recipient agrees to the terms of this Agreement.

"Software" includes, and this Agreement will apply to (a) the Linksys software provided in or with the applicable Linksys product, and (b) any upgrades, updates, bug fixes or modified versions ("Upgrades") or backup copies of the Software supplied to You by Linksys or an authorized reseller, provided you already hold a valid license to the original software and have paid any applicable fee for the Upgrade.

Protection of Information. The Software and documentation contain trade secrets and/or copyrighted materials of Linksys or its suppliers. You will not decompile, decrypt, reverse engineer or disassemble the Software (except to the extent expressly permitted by law notwithstanding this provision), and will not disclose or make available such trade secrets or copyrighted material in any form to any third party. Title to Software and documentation will remain solely with Linksys.

Open Source Software. The GPL source code incorporated into the Software is available for free download at <http://www.linksys.com/gpl>. If You would like a copy of the GPL source code in this Software on a CD, Linksys will mail to You a CD with such code for \$9.99 plus the cost of shipping upon request.

Term and Termination. You may terminate this License at any time by destroying all copies of the Software and documentation. Your rights under this License will terminate immediately without notice from Linksys if You fail to comply with any provision of this Agreement.

Limited Warranty

Linksys warrants to the original end user purchaser of the Linksys Product ("You") that for a period of two (2) years for the Linksys Product's Hardware and for a period of one (1) year for the Linksys Product's disk drives (if included), fan and power supply (the "Warranty Period"), your Linksys Product will be substantially free of defects in materials and workmanship under normal use. Your exclusive remedy and Linksys' entire liability under this warranty will be for Linksys at its option to repair or replace the Product or refund Your purchase price less any rebates. This limited warranty extends only to the original purchaser.

If the Product proves defective during the Warranty Period call Linksys Technical Support in order to obtain a Return Authorization Number, if applicable. BE SURE TO HAVE YOUR PROOF OF PURCHASE ON HAND WHEN CALLING. If You are requested to return the Product, mark the Return Authorization Number clearly on the outside of the package and include a copy of your original proof of purchase.

RETURN REQUESTS CANNOT BE PROCESSED WITHOUT PROOF OF PURCHASE. You are responsible for shipping defective Products to Linksys. Linksys pays for UPS Ground shipping from Linksys back to You only. Customers located outside of the United States of America and Canada are responsible for all shipping and handling charges.

ALL IMPLIED WARRANTIES AND CONDITIONS OF MERCHANTABILITY OR FITNESS FOR A PARTICULAR PURPOSE ARE LIMITED TO THE DURATION OF THE WARRANTY PERIOD. ALL OTHER EXPRESS OR IMPLIED CONDITIONS, REPRESENTATIONS AND WARRANTIES, INCLUDING ANY IMPLIED WARRANTY OF NON-INFRINGEMENT, ARE DISCLAIMED. Some jurisdictions do not allow limitations on how long an implied warranty lasts, so the above limitation may not apply to You. This warranty gives You specific legal rights, and You may also have other rights which vary by jurisdiction. This warranty does not apply if the Product (a) has been altered, except by Linksys, (b) has not been installed, operated, repaired, or maintained in accordance with instructions supplied by Linksys, or (c) has been subjected to abnormal physical or electrical stress, misuse, negligence, or accident. In addition, due to the continual development of new techniques for intruding upon and attacking networks, Linksys does not warrant that the Product will be free of vulnerability to intrusion or attack.

THE EXTENT NOT PROHIBITED BY LAW, IN NO EVENT WILL LINKSYS BE LIABLE FOR ANY LOST DATA, REVENUE OR PROFIT, OR FOR SPECIAL, INDIRECT, CONSEQUENTIAL, INCIDENTAL OR PUNITIVE DAMAGES, REGARDLESS OF THE THEORY OF LIABILITY (INCLUDING NEGLIGENCE), ARISING OUT OF OR RELATED TO THE USE OF OR INABILITY TO USE THE PRODUCT (INCLUDING ANY SOFTWARE) EVEN IF LINKSYS HAS BEEN ADVISED OF THE POSSIBILITY OF SUCH DAMAGES. IN NO EVENT WILL LINKSYS' LIABILITY EXCEED THE AMOUNT PAID BY YOU FOR THE PRODUCT.

The foregoing limitations will apply even if any warranty or remedy provided under this Agreement fails of its essential purpose. Some jurisdictions do not allow the exclusion or limitation of incidental or consequential damages, so the above limitation or exclusion may not apply to You.

Please direct all inquiries to: Linksys, P.O. Box 18558, Irvine, CA 92623.



Free Manuals Download Website

<http://myh66.com>

<http://usermanuals.us>

<http://www.somanuals.com>

<http://www.4manuals.cc>

<http://www.manual-lib.com>

<http://www.404manual.com>

<http://www.luxmanual.com>

<http://aubethermostatmanual.com>

Golf course search by state

<http://golfingnear.com>

Email search by domain

<http://emailbydomain.com>

Auto manuals search

<http://auto.somanuals.com>

TV manuals search

<http://tv.somanuals.com>