

LINKSYS®

A Division of Cisco Systems, Inc.



2.4GHz
802.11g

Wireless-G

Access Point with SRX

User Guide

WIRELESS

Model No. **WAP54GX**

CISCO SYSTEMS



Copyright and Trademarks

Specifications are subject to change without notice. Linksys is a registered trademark or trademark of Cisco Systems, Inc. and/or its affiliates in the U.S. and certain other countries. Copyright © 2006 Cisco Systems, Inc. All rights reserved. Other brands and product names are trademarks or registered trademarks of their respective holders.

WARNING: This product contains chemicals, including lead, known to the State of California to cause cancer, and birth defects or other reproductive harm. ***Wash hands after handling.***

How to Use this User Guide

The user guide to the Wireless-G Access Point with SRX has been designed to make understanding networking with the Access Point easier than ever. Look for the following items when reading this User Guide:



This checkmark means there is a note of interest and is something you should pay special attention to while using the Access Point.



This exclamation point means there is a caution or warning and is something that could damage your property or the Access Point.



This question mark provides you with a reminder about something you might need to do while using the Access Point.

In addition to these symbols, there are definitions for technical terms that are presented like this:

word: definition.

Also, each figure (diagram, screenshot, or other image) is provided with a figure number and description, like this:

Figure 0-1: Sample Figure Description

Figure numbers and descriptions can also be found in the “List of Figures” section.

Table of Contents

Chapter 1: Introduction	1
Welcome	1
What's in this User Guide?	2
Chapter 2: Planning Your Wireless Network	4
Network Topology	4
Roaming	4
Network Layout	5
Chapter 3: Getting to Know the Wireless-G Access Point with SRX	6
The Front Panel	6
The Back Panel	7
Chapter 4: Connecting the Wireless-G Access Point with SRX	8
Overview	8
Connections for Setup	8
Chapter 5: Setting up the Wireless-G Access Point with SRX	9
Overview	9
Using the Setup Wizard	9
Chapter 6: Configuring the Wireless-G Access Point with SRX	19
Overview	19
Navigating the Utility	19
Accessing the Utility	21
The Setup - Network Setup Tab	21
The Wireless - Basic Wireless Settings Tab	23
The Wireless - Wireless Security Tab	24
The Wireless - Wireless MAC Filter Tab	27
The Wireless - Advanced Wireless Settings Tab	28
The Administration - Management Tab	30
The Administration - Log Tab	31
The Administration - Factory Defaults Tab	32
The Administration - Firmware Upgrade Tab	32
The Status - Local Network Tab	33
The Status - Wireless Network Tab	34

Appendix A: Troubleshooting	35
Frequently Asked Questions	35
Appendix B: Wireless Security	39
Security Precautions	39
Security Threats Facing Wireless Networks	39
Appendix C: Upgrading Firmware	42
Appendix D: Windows Help	43
Appendix E: Glossary	44
Appendix F: Specifications	49
Appendix G: Warranty Information	51
Appendix H: Regulatory Information	52
Appendix I: Contact Information	58

List of Figures

Figure 3-1: Front Panel	6
Figure 3-2: Back Panel	7
Figure 4-1: Connect the Ethernet Network Cable	8
Figure 4-2: Connect the Power	8
Figure 5-1: Welcome Screen	9
Figure 5-2: Connect the Network Cable to the Router or Switch Screen	10
Figure 5-3: Connect the Network Cable to the Access Point Screen	10
Figure 5-4: Power on the Access Point Screen	11
Figure 5-5: Check the Access Point's Status Screen	11
Figure 5-6: Select the Access Point Screen	12
Figure 5-7: Password Screen	12
Figure 5-8: Basic Settings Screen	13
Figure 5-9: Wireless Settings Screen	14
Figure 5-10: Security Settings Screen	15
Figure 5-11: WEP Settings Screen	15
Figure 5-12: WPA Personal Settings Screen	16
Figure 5-13: WPA2 Personal Settings Screen	16
Figure 5-14: WPA2 Mixed Mode Settings Screen	17
Figure 5-15: Confirm New Settings Screen	18
Figure 5-16: Congratulations Screen	18
Figure 6-1: Login Screen	21
Figure 6-2: Setup - Automatic Configuration - DHCP Screen	21
Figure 6-3: Setup - Static IP Screen	22
Figure 6-4: Wireless - Basic Wireless Settings Screen	23
Figure 6-5: Wireless - Wireless Security (WPA-Personal) Screen	24
Figure 6-6: Wireless Security - WPA2-Personal Screen	24
Figure 6-7: Wireless Security - WPA2-Mixed Screen	25
Figure 6-8: Wireless Security - WPA-Enterprise Screen	25

Figure 6-9: Wireless Security - RADIUS Screen	26
Figure 6-10: Wireless Security - WEP Screen	26
Figure 6-11: Wireless - Wireless MAC Filter Screen	27
Figure 6-12: Wireless - Wireless Client Table	27
Figure 6-13: Wireless - Advanced Wireless Settings Screen	28
Figure 6-14: Administration - Management Screen	30
Figure 6-15: Administration - Log Screen	31
Figure 6-16: View Log Screen	31
Figure 6-17: Administration - Factory Defaults Screen	32
Figure 6-18: Administration - Firmware Upgrade Screen	32
Figure 6-19: Status - Local Network Screen	33
Figure 6-20: Status - Wireless Network Screen	34
Figure C-1: Firmware Upgrade	42

Chapter 1: Introduction

Welcome

Thank you for choosing the Wireless-G Access Point with SRX. This Access Point will allow you to network wirelessly better than ever.

How does the Access Point do all of this? An access point allows for greater range and mobility within your wireless network while also allowing you to connect the wireless network to a wired environment. And with SRX, you have greater range and speed.

But what does all of this mean?

Networks are useful tools for sharing computer resources. You can access one printer from different computers and access data located on another computer's hard drive. Networks are even used for playing multiplayer video games. So, networks are not only useful in homes and offices, they can also be fun.

PCs on a wired network create a LAN, or Local Area Network. They are connected with Ethernet cables, which is why the network is called "wired".

PCs equipped with wireless cards and adapters can communicate without cumbersome cables. By sharing the same wireless settings, within their transmission radius, they form a wireless network. This is sometimes called a WLAN, or Wired Local Area Network. The Access Point bridges wireless networks of both 802.11g and 802.11b standards and wired networks.

Use the instructions in this Guide to help you connect the Access Point, set it up, and configure it to bridge your different networks. These instructions should be all you need to get the most out of the Access Point.

access point: a device that allows wireless-equipped computers and other devices to communicate with a wired network. Also used to expand the range of a wireless network.

network: a series of computers or devices connected together.

lan (local area network): the computers and networking products that make up your local network.

ethernet: network protocol that specifies how data is placed on and retrieved from a common transmission medium.

adapter: a device that adds network functionality to your PC.

802.11g: a wireless networking standard that specifies a maximum data transfer rate of 54Mbps, an operating frequency of 2.4GHz, and backward compatibility with 802.11b devices.

802.11b: a wireless networking standard that specifies a maximum data transfer rate of 11Mbps and an operating frequency of 2.4GHz.

SRX: an antenna technology that provides for up to 8X better performance and up to 3X longer range.

What's in this User Guide?

This user guide covers the steps for setting up and using the Wireless-G Access Point with SRX.

- **Chapter 1: Introduction**
This chapter describes the Access Point's applications and this User Guide.
- **Chapter 2: Planning your Wireless Network**
This chapter describes the basics of wireless networking.
- **Chapter 3: Getting to Know the Wireless-G Access Point with SRX**
This chapter describes the physical features of the Access Point.
- **Chapter 4: Connecting the Wireless-G Access Point with SRX**
This chapter instructs you on how to connect the Access Point to your network.
- **Chapter 5: Setting Up the Wireless-G Access Point with SRX**
This chapter explains how to use the Setup Wizard to configure the settings on the Access Point.
- **Chapter 6: Configuring the Wireless-G Access Point with SRX**
This chapter explains how to use the Access Point's Web-based Utility for advanced configuration.
- **Appendix A: Troubleshooting**
This appendix describes some frequently asked questions regarding installation and use of the Access Point.
- **Appendix B: Wireless Security**
This appendix explains the risks of wireless networking and some solutions to reduce the risks.
- **Appendix C: Upgrading Firmware**
This appendix instructs you on how to upgrade the Access Point's firmware.
- **Appendix D: Windows Help**
This appendix describes some of the ways Windows can help you with wireless networking.
- **Appendix E: Glossary**
This appendix gives a brief glossary of terms frequently used in networking.
- **Appendix F: Specifications**
This appendix provides the Access Point's technical specifications.
- **Appendix G: Warranty Information**
This appendix supplies the Access Point's warranty information.

Wireless-G Access Point with SRX

- **Appendix H: Regulatory Information**
This appendix supplies the Access Point's regulatory information.
- **Appendix I: Contact Information**
This appendix provides contact information for a variety of Linksys resources, including Technical Support.

Chapter 2: Planning Your Wireless Network

Network Topology

A wireless network is a group of computers, each equipped with one wireless adapter. Computers in a wireless network must be configured to share the same radio channel. Several PCs equipped with wireless cards or adapters can communicate with one another to form an ad-hoc network.

Linksys wireless adapters also provide users access to a wired network when using an access point, such as the Wireless-G Access Point with SRX, or wireless router. An integrated wireless and wired network is called an infrastructure network. Each wireless PC in an infrastructure network can talk to any computer in a wired network infrastructure via the access point or wireless router.

An infrastructure configuration extends the accessibility of a wireless PC to a wired network, and may double the effective wireless transmission range for two wireless adapter PCs. Since an access point is able to forward data within a network, the effective transmission range in an infrastructure network may be doubled.

Roaming

Infrastructure mode also supports roaming capabilities for mobile users. Roaming means that you can move your wireless PC within your network and the access points will pick up the wireless PC's signal, providing that they both share the same channel and SSID.

Before using the roaming capabilities, choose a feasible radio channel and optimum access point position. Proper access point positioning combined with a clear radio signal will greatly enhance performance.

ad-hoc: a group of wireless devices communicating directly with each other (peer-to-peer) without the use of an access point.

infrastructure: a wireless network that is bridged to a wired network via an access point.

roaming: the ability to take a wireless device from one access point's range to another without losing the connection.

ssid: your wireless network's name

Network Layout

The Wireless-G Access Point with SRX has been designed for use with 802.11g and 802.11b products. The Access Point is compatible with 802.11g and 802.11b adapters, such as the Notebook Adapters for your laptop computers, PCI Adapters for your desktop PCs, and USB Adapters for when you want to enjoy USB connectivity. These wireless products can also communicate with a 802.11g or 802.11b Wireless PrintServer.

To link your wired network with your wireless network, connect the Access Point's Ethernet network port to any switch or router.

With these, and many other, Linksys products, your networking options are limitless. Go to the Linksys website at www.linksys.com for more information about wireless products.

Chapter 3: Getting to Know the Wireless-G Access Point with SRX

The Front Panel

The Access Point's LEDs, which indicate activity and status information, are located on the front panel.



Figure 3-1: Front Panel

- Ethernet** Green. The **Link** LED lights up when the Access Point is successfully connected to a device through the Ethernet network port. The LED flashes when the Access Point is transmitting or receiving data through the Ethernet network port.
- Wireless** Green. The **Act** LED lights up when the Access Point is ready for wireless use. It flashes when the Access Point is transmitting or receiving data wirelessly.
- Power** Green. The **Power** LED lights up when the Access Point is powered on.

The Back Panel

The Access Point's Ethernet network and power ports, as well as the Reset button, are located on the back panel.



Figure 3-2: Back Panel

- Reset Button** There are two ways to reset the Access Point's factory defaults. Either press the **Reset** button, for approximately ten seconds, or use the *Administration - Factory Defaults* screen of the Access Point's Web-based Utility.
- Ethernet Port** The Ethernet network port connects to an Ethernet network device, such as a switch or router.
- Power Port** The Power port connects to the Access Point's power adapter.



IMPORTANT: Resetting the Access Point will erase all of your settings (including wireless security, IP address, and power output) and replace them with the factory defaults. Do not reset the Access Point if you want to retain these settings.

port: the connection point on a computer or networking device used for plugging in cables or adapters

Chapter 4: Connecting the Wireless-G Access Point with SRX

Overview

This chapter explains how to connect the Access Point for setup.

Connections for Setup

1. Connect your Ethernet network cable to your network router or switch. Then connect the other end of the network cable to the Access Point's Ethernet port.
2. Connect the included power adapter to the Access Point's Power port. Then plug the power adapter into an electrical outlet. The LEDs on the front panel will light up as soon as the Access Point powers on.

Proceed to “Chapter 5: Setting Up the Wireless-G Access Point with SRX.”



Figure 4-1: Connect the Ethernet Network Cable



Figure 4-2: Connect the Power

Chapter 5: Setting up the Wireless-G Access Point with SRX

Overview

Now that you've connected the Access Point to your wired network, you are ready to begin setting it up. This Setup Wizard will take you through all the steps necessary to configure the Access Point.

Using the Setup Wizard

1. Insert the Setup Wizard CD-ROM into your CD-ROM drive. The Setup Wizard should run automatically, and the *Welcome* screen should appear. If it does not, click the **Start** button and choose **Run**. In the field that appears, enter **D:\setup.exe** (if "D" is the letter of your CD-ROM drive).
2. On the *Welcome* screen, click the **Click Here to Start** button if this is the first time you are running the Setup Wizard. These are your other choices:

User Guide - Click the **User Guide** button to open the PDF file of this User Guide.

Exit - Click the **Exit** button to exit the Setup Wizard.



Figure 5-1: Welcome Screen

Wireless-G Access Point with SRX

3. Optimally, you should set up the Access Point using a PC on your wired network. Connect a network cable to your network router or switch. Then click the **Next** button.

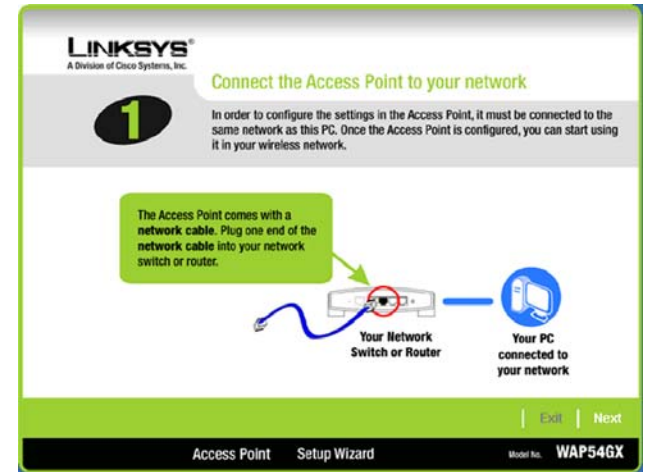


Figure 5-2: Connect the Network Cable to the Router or Switch Screen

4. The screen shows how the Access Point should be connected as you run the Setup Wizard. Connect the other end of the network cable to the Access Point's Ethernet network port. Then click the **Next** button.

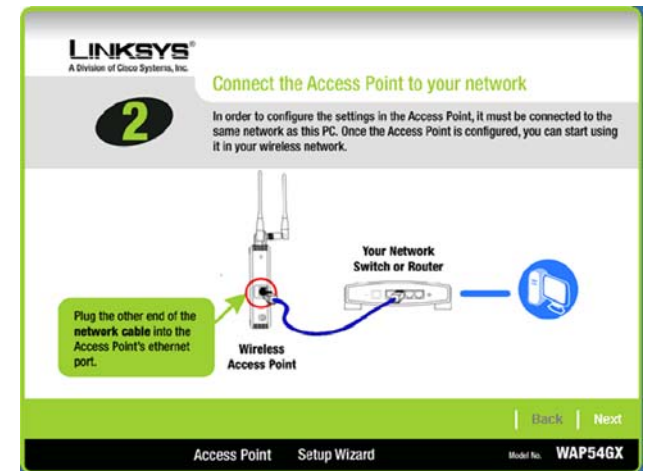


Figure 5-3: Connect the Network Cable to the Access Point Screen

5. Connect the power adapter to the Access Point and an electrical outlet. Then click the **Next** button.

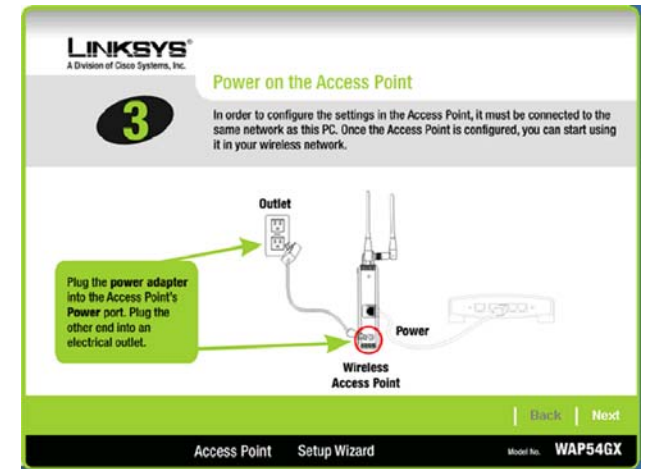


Figure 5-4: Power on the Access Point Screen

6. Make sure the Access Point's Ethernet, Wireless, and Power LEDs are lit on its front panel. If they are not, check your cable connections. Then click the **Next** button to continue.

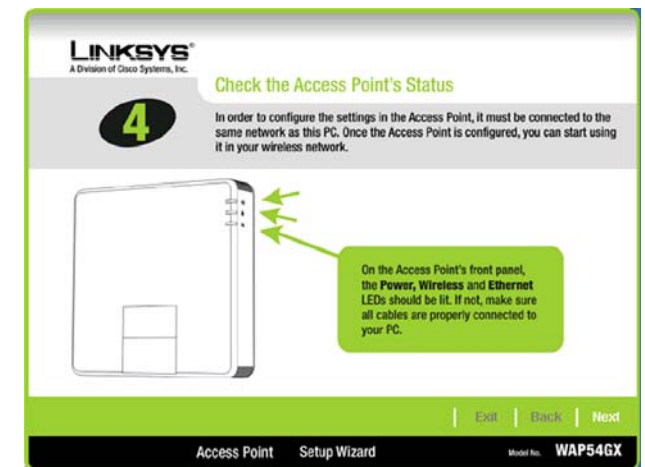


Figure 5-5: Check the Access Point's Status Screen

Wireless-G Access Point with SRX

- The Setup Wizard will run a search for the Access Point within your network and then display a list along with the status information for the selected access point. If this is the only access point on your network, it will be the only one displayed. If there are more than one displayed, select the Access Point by clicking on it. Click the **Yes** button to change any settings, or click the **No** button to keep these settings.

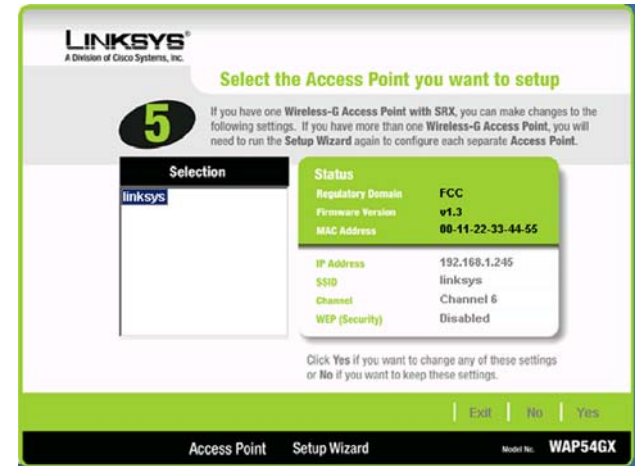


Figure 5-6: Select the Access Point Screen

- You will be asked to sign onto the Access Point you have selected. Enter the default password, **admin**. Then, click **Enter**. (This user name and password can be changed from the Web-based Utility's Administration - Management tab.)



Figure 5-7: Password Screen

9. The *Basic Settings* screen will appear next. Enter a descriptive name in the *Device Name* field. Create a password that will control access to the Access Point's Web-based Utility and Setup Wizard.

If your network router will automatically assign an IP address to the Access Point, then select **Automatic-DHCP**.

If you want to assign a static or fixed IP address to the Access Point, then select **Static IP**. Enter the IP Address, Subnet Mask, and Default Gateway settings. If you are not sure what changes you should make, then keep the default values.

Then, click the **Next** button to continue or **Back** to return to the previous page.

Device Name - Enter a descriptive name for the Access Point.

Password - Enter a password that will control access to the Utility and Setup Wizard.

IP Address - This IP address must be unique to your network. (The default IP address is **192.168.1.245**.)

Subnet Mask - The Access Point's Subnet Mask must be the same as the subnet mask of your Ethernet network.

Default Gateway - Enter the IP address of your network gateway (usually your router).

Click the **Next** button to continue or the **Back** button to return to the previous screen.

The screenshot shows the 'Basic Settings' page for a Linksys WAP54GX. At the top left is the Linksys logo. Below it is a large green circle with the number '6'. To the right of the '6' is the title 'Basic Settings' and a sub-header 'Basic Settings'. Below the title is a paragraph: 'These are basic settings for the Access Point. Please enter a new password to help secure your Access Point when accessing the Setup Wizard or Web-based utility.' Below this are several form fields: 'Device Name' with 'WAP54GX', 'Password' with '*****', 'Network' with a dropdown menu set to 'Static IP', 'IP Address' with '192.168.1.245', 'Subnet Mask' with '255.255.255.0', and 'Default Gateway' with '192.168.1.245'. To the right of these fields are three columns of explanatory text. The first column explains the Device Name. The second column explains the Password. The third column explains the Network selection. Below the Network selection is a paragraph explaining the IP Address, Subnet Mask, and Default Gateway. At the bottom right are 'Back' and 'Next' buttons. At the very bottom, there is a footer with 'Access Point Setup Wizard' and 'Model No. WAP54GX'.

Figure 5-8: Basic Settings Screen

Configuring the Access Point's Wireless Settings

1. The Setup Wizard will ask you to enter the SSID, Channel, and Network Mode settings for your wireless network.

SSID - Enter the name of your wireless network. The SSID must be identical for all devices in the network. The default setting is **linksys** (all lowercase).

Channel - Select the operating channel for your wireless network. All of your wireless devices will use this channel to communicate.

Network Mode - Select the wireless standards running on your network. If you have both 802.11g and 802.11b devices in your network, keep the default setting, **Mixed Mode**. If you have only 802.11g devices, select **G-Only**. If you have only 802.11b devices, select **B-Only**. If you want to disable your wireless network, select **Disable**.

Click the **Next** button to continue or the **Back** button to return to the previous screen.

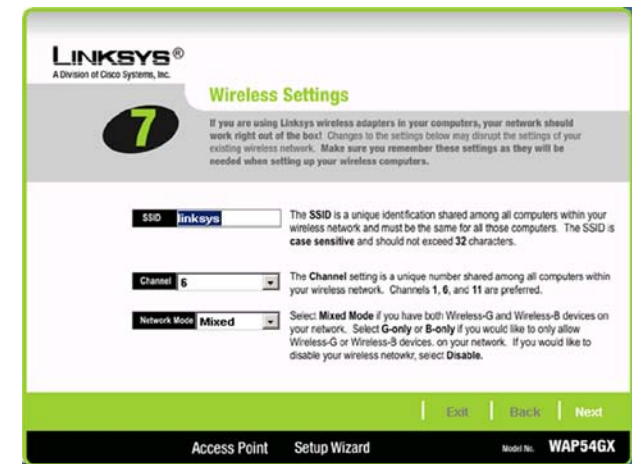


Figure 5-9: Wireless Settings Screen

2. Select the level of security you want to use: **WEP** or **WPA/WPA2 Personal**. WEP stands for Wired Equivalent Privacy, and WPA stands for Wi-Fi Protected Access. Click the **Next** button and proceed to step 3. If you do not want to use any wireless security method, select **Disabled** and then click the **Next** button. Proceed to step 4.

If you want to use WPA-Enterprise, it is available through the Access Point's Web-based Utility. Select **Disabled**. Click the **Next** button and proceed to step 4. After you complete the Setup Wizard, refer to the Wireless Security tab in "Chapter 6: Configuring the Wireless-G Access Point with SRX."

3. Proceed to the appropriate section for your security method.

WEP

WEP (64-Bit)

To use 64-bit WEP encryption, select **WEP (64-bit)**. Then enter a passphrase or WEP key.

Passphrase - Enter a passphrase in the *Passphrase* field, so a WEP key is automatically generated. The passphrase is case-sensitive and should not be longer than 16 alphanumeric characters. It must match the passphrase of your other wireless network devices and is compatible with Linksys wireless products only. (If you have any non-Linksys wireless products, enter the WEP key manually on those products.)

WEP Key - The WEP key you enter must match the WEP key of your wireless network. For 64-bit encryption, enter exactly 10 hexadecimal characters. Valid hexadecimal characters are "0" to "9" and "A" to "F".

Click the **Next** button to continue or the **Back** button to return to the previous screen.

WEP (128-Bit)

To use 128-bit WEP encryption, select **WEP (128-bit)**. Then enter a passphrase or WEP key.

Passphrase - Enter a passphrase in the *Passphrase* field, so a WEP key is automatically generated. The passphrase is case-sensitive and should not be longer than 16 alphanumeric characters. It must match the passphrase of your other wireless network devices and is compatible with Linksys wireless products only. (If you have any non-Linksys wireless products, enter the WEP key manually on those products.)

WEP Key - The WEP key you enter must match the WEP key of your wireless network. For 128-bit encryption, enter exactly 26 hexadecimal characters. Valid hexadecimal characters are "0" to "9" and "A" to "F".

Click the **Next** button to continue or the **Back** button to return to the previous screen.



Figure 5-10: Security Settings Screen

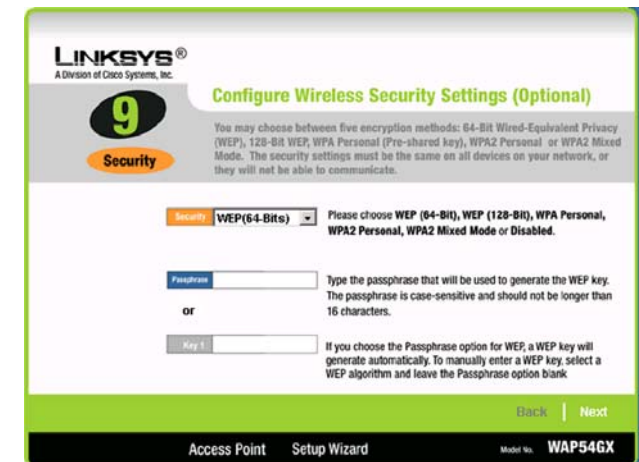


Figure 5-11: WEP Settings Screen

wep (wired equivalent privacy): a method of encrypting network data transmitted on a wireless network for greater security.

encryption: encoding data transmitted in a network.

WPA/WPA2 Personal

WPA Personal

To use WPA Personal security, select **WPA Personal** from the *Security* drop-down menu. WPA Personal offers two encryption methods, TKIP and AES, with dynamic encryption keys. Select **TKIP** or **AES** for encryption. Then enter a Passphrase that is 8-32 characters in length.

Encryption - Select **TKIP** or **AES** from the *Encryption* drop-down menu.

Passphrase - Enter a Passphrase, also called a pre-shared key, of 8-32 characters in the *Passphrase* field. The longer and more complex your Passphrase is, the more secure your network will be.

Click the **Next** button to continue or the **Back** button to return to the previous screen.

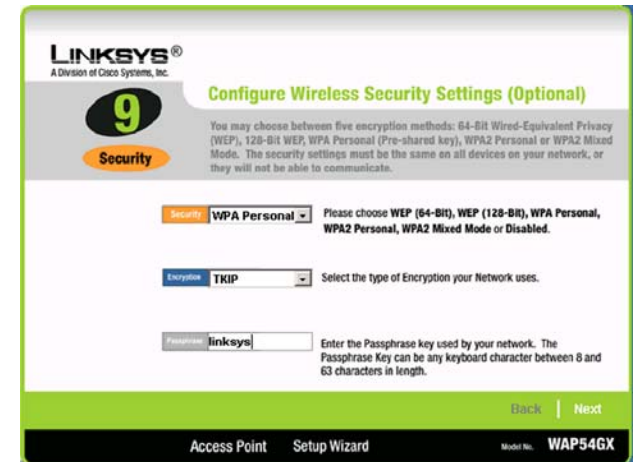


Figure 5-12: WPA Personal Settings Screen

wpa (wi-fi protected access: a wireless security protocol using TKIP (Temporal Key Integrity Protocol) encryption, which can be used in conjunction with a RADIUS server.

WPA2 Personal

To use WPA2 Personal security, select **WPA2 Personal** from the *Security* drop-down menu. WPA2 Personal uses AES encryption with dynamic keys. Enter a Passphrase that is 8-32 characters in length.

Encryption - The default for WPA2 Personal, **AES**, is automatically selected.

Passphrase - Enter a Passphrase, also called a pre-shared key, of 8-32 characters in the *Passphrase* field. The longer and more complex your Passphrase is, the more secure your network will be.

Click the **Next** button to continue or the **Back** button to return to the previous screen.



Figure 5-13: WPA2 Personal Settings Screen

WPA2 Mixed Mode

To use WPA2 Mixed Mode security, select **WPA2 Mixed Mode** from the *Security* drop-down menu. WPA2 Mixed Mode uses TKIP and AES for encryption. Enter a Passphrase that is 8-32 characters in length.

Encryption - The default for WPA2 Personal, **TKIP +AES**, is automatically selected.

Passphrase - Enter a Passphrase, also called a pre-shared key, of 8-32 characters in the *Passphrase* field. The longer and more complex your Passphrase is, the more secure your network will be.

Click the **Next** button to continue or the **Back** button to return to the previous screen.



Figure 5-14: WPA2 Mixed Mode Settings Screen

Wireless-G Access Point with SRX

- The Setup Wizard will ask you to review your settings before it saves them. Click the **Yes** button if you are satisfied with your settings, or click the **No** button if you do not want to save your new settings.

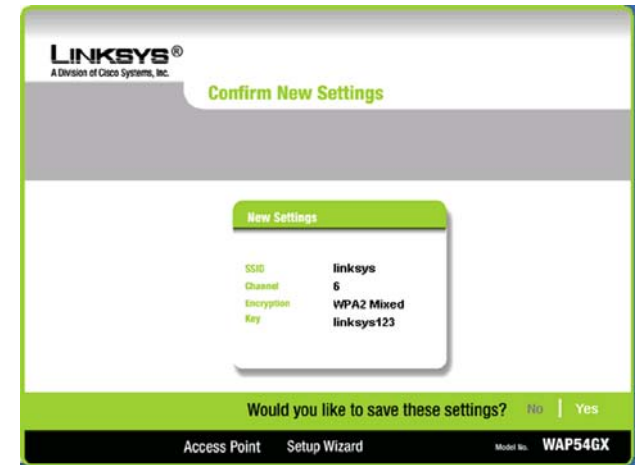


Figure 5-15: Confirm New Settings Screen

- The *Congratulations* screen will appear. Click the **Online Registration** button to register the Access Point, or click the **Exit** button to exit the Setup Wizard.

Congratulations! The installation of the Wireless-G Access Point with SRX is complete.

If you want to make advanced configuration changes, proceed to “Chapter 6: Configuring the Wireless-G Access Point with SRX.”



Figure 5-16: Congratulations Screen

Chapter 6: Configuring the Wireless-G Access Point with SRX

Overview

The Access Point has been designed to be functional right out of the box, with the default settings in the Setup Wizard. However, if you'd like to change these settings, the Access Point can be configured through your web browser with the Web-based Utility. This chapter explains how to use the Utility.

The Utility can be accessed via Microsoft Internet Explorer or Netscape Navigator through use of a computer that is networked with the Access Point.

For a basic network setup, most users only have to use the following screens of the Utility:

- **Setup**
On the *Network Setup* screen, enter your basic network settings here.
- **Management**
Click the **Administration** tab and then select the **Management** screen. The Access Point's default password is **admin**. To secure the Access Point, change the AP's Password from its default.

Navigating the Utility

There are four main tabs: Setup, Wireless, Administration, and Status. Additional screens will be available from most of the main tabs.

Setup

Enter the network settings for the Access Point.

- *Network Setup*. Enter the settings for the Access Point and your Internet connection on this screen.



HAVE YOU: Enabled TCP/IP on your PCs? PCs communicate over the network with this protocol. Refer to "Appendix D: Windows Help" for more information on TCP/IP.

tcp/ip: a set of instructions PCs use to communicate over a network.

browser: an application that provides a way to look at and interact with all the information on the World Wide Web.



NOTE: The Access Point is designed to function properly after using the Setup Wizard. This chapter is provided solely for those who wish to perform more advanced configuration or monitoring.

Wireless

You will use the Wireless tabs to enter a variety of wireless settings for the Access Point.

- *Basic Wireless Settings.* Enter the network mode, SSID, and other basic settings on this screen.
- *Wireless Security.* Use this screen to configure the Access Point's wireless security settings.
- *Wireless MAC Filter.* From this screen, you can allow access to your wireless network by MAC address.
- *Advanced Wireless Settings.* Configure the Access Point's more advanced wireless settings.

Administration

You will use the Administration tabs to manage the Access Point.

- *Management.* This screen allows you to customize the password settings, as well as back up or restore the Access Point's configuration file.
- *Log.* Configure the Log settings for the Access Point on this screen.
- *Factory Defaults.* Use this screen to reset the Access Point to its factory default settings.
- *Firmware Upgrade.* Upgrade the Access Point's firmware on this screen.

firmware: the programming code that runs a networking device.

Status

You will be able to view status information for your local and wireless network.

- *Local Network.* This screen will display current information on the Access Point and its local network.
- *Wireless Network.* This screen will display current information on the Access Point and its wireless network.

Accessing the Utility

To access the Web-based Utility of the Access Point, launch Internet Explorer or Netscape Navigator. In the *Address* field, enter the Access Point's default IP address, **192.168.1.245**, or the IP address you entered during the Setup Wizard. (Should you need to learn what IP address the Access Point presently uses, run the Setup Wizard again. It will scan the Access Point and give you its IP address.) Press the **Enter** key.

The login screen will appear. Enter **admin** in the *User Name* field. The first time you open the Web-based Utility, use the default password, **admin**. (You can set a new password from the Administration - Management tab.) Then click the **OK** button.

The Setup - Network Setup Tab

The first screen that appears is the *Network Setup* screen. This allows you to change the Access Point's general settings.

Network Setup

Device Name

You may assign any Device Name to the Access Point. Unique, memorable names are helpful, especially if you are employing multiple access points on the same network.

Configuration Type

Select **Automatic Configuration - DHCP** if your network router will assign an IP address to the Access Point.

The Access Point's IP Address, Subnet Mask, and Default Gateway address are displayed here.



Figure 6-1: Login Screen

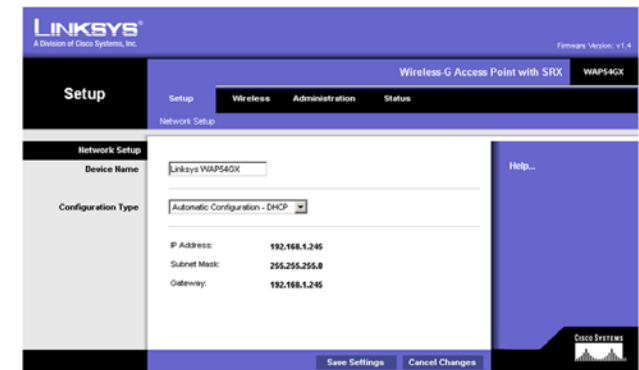


Figure 6-2: Setup - Automatic Configuration - DHCP Screen

Wireless-G Access Point with SRX

Select **Static IP** if you want to assign a static or fixed IP address to the Access Point. Then complete the following:

IP Address. The IP address must be unique to your network. We suggest you use the default IP address of **192.168.1.245**.

Subnet Mask. The Subnet Mask must be the same as that set on your Ethernet network.

Default Gateway. Enter the IP address of your network's gateway. The gateway is the device that enables communication between your computers and the Internet. In most cases, your router acts as your gateway.

Change these settings as described here and click **Save Settings** to apply your changes, or click **Cancel Changes** to cancel your changes. Click **Help** for more information.



Figure 6-3: Setup - Static IP Screen

static ip address: a fixed address assigned to a computer or device that is connected to a network.

The Wireless - Basic Wireless Settings Tab

Change the wireless network settings on this screen.

Basic Wireless Settings

Configure the Access Point using the available settings.

Mode. Select **Mixed** and both Wireless-G and Wireless-B computers will be allowed on the network, but the speed will be reduced. Select **G-Only** for maximum speed with Wireless-G products only. The final selection, **B-Only**, allows only Wireless-B products on the network. To disable wireless performance, select **Disabled**.

Network Name (SSID). Enter the name of the Access Point's wireless network.

Channel. Select the appropriate channel from the list provided; this will be the channel that all of your wireless devices will use.

SSID Broadcast. This feature allows the SSID to be broadcast by the Access Point. You may want to enable this function while configuring your network, but make sure that you disable it when you are finished. With this enabled, someone could easily obtain the SSID information with site survey software and gain unauthorized access to your main network. Click **Enabled** to broadcast the SSID to all wireless devices in range. Click **Disabled** to increase network security and block the SSID from being seen on networked PCs.



Figure 6-4: Wireless - Basic Wireless Settings Screen

The Wireless - Wireless Security Tab

Change the Access Point's wireless security settings on this screen.

Wireless Security

Security Mode. Select the security method you want to use, **WPA-Personal**, **WPA2-Personal**, **WPA2-Mixed**, **WPA-Enterprise**, **RADIUS**, or **WEP**. (WPA stands for Wi-Fi Protected Access, which is a security standard stronger than WEP encryption. WPA2 is a stronger version of WPA. WEP stands for Wired Equivalent Privacy, while RADIUS stands for Remote Authentication Dial-In User Service.) Refer to the appropriate instructions below. For detailed instructions on configuring wireless security for the Access Point, turn to "Appendix B: Wireless Security." To disable such security, select **Disabled**.

WPA-Personal

Encryption. WPA offers you two encryption methods, TKIP and AES, with dynamic encryption keys. Select the type of algorithm you want to use, **TKIP** or **AES**.

Passphrase. Enter a Passphrase (also called a WPA Shared Key) of 8-32 characters.

Key Renewal. Enter a Key Renewal timeout period, which instructs the Access Point how often it should change the encryption keys.

Change these settings as described here and click **Save Settings** to apply your changes, or click **Cancel Changes** to cancel your changes. Click **Help** for more information.

WPA2-Personal

Encryption. **AES** is automatically selected as the encryption method.

Passphrase. Enter a Passphrase (also called a WPA Shared Key) of 8-32 characters.

Key Renewal. Enter a Key Renewal timeout period, which instructs the Access Point how often it should change the encryption keys.

Change these settings as described here and click **Save Settings** to apply your changes, or click **Cancel Changes** to cancel your changes. Click **Help** for more information.

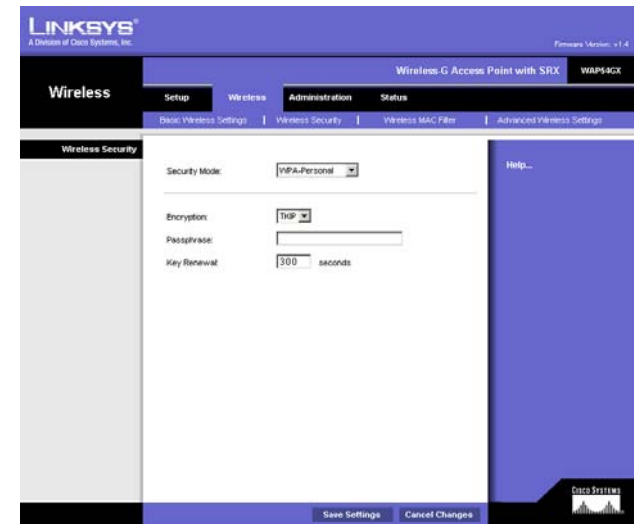


Figure 6-5: Wireless - Wireless Security (WPA-Personal) Screen

encryption: encoding data transmitted in a network.

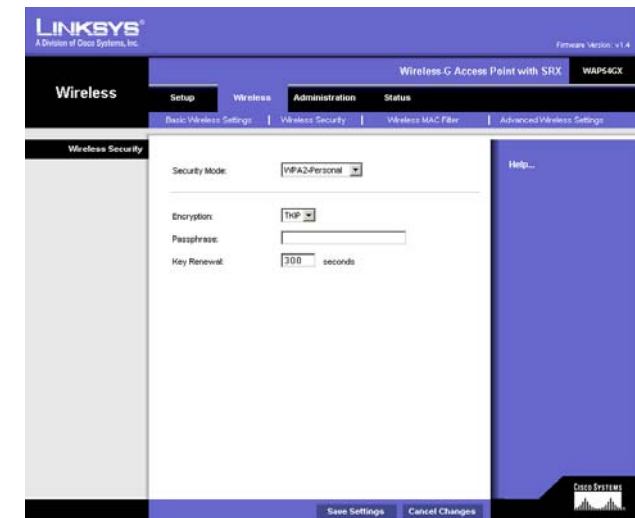


Figure 6-6: Wireless Security - WPA2-Personal Screen

WPA2-Mixed

Encryption. **TKIP + AES** is automatically selected so both methods can be used.

Passphrase. Enter a Passphrase (also called a WPA Shared Key) of 8-32 characters.

Key Renewal. Enter a Key Renewal timeout period, which instructs the Access Point how often it should change the encryption keys.

Change these settings as described here and click **Save Settings** to apply your changes, or click **Cancel Changes** to cancel your changes. Click **Help** for more information.

WPA-Enterprise

This option features WPA used in coordination with a RADIUS server. (This should only be used when a RADIUS server is connected to the Access Point.)

Encryption. WPA offers you two encryption methods, TKIP and AES, with dynamic encryption keys. Select the type of algorithm you want to use, **TKIP** or **AES**.

RADIUS Server. Enter the RADIUS server's IP address.

RADIUS Port. Enter the port number used by the RADIUS server.

Shared Secret. Enter the Shared Secret key used by the Access Point and RADIUS server.

Key Renewal. Enter a Key Renewal timeout period, which instructs the Access Point how often it should change the encryption keys.

Change these settings as described here and click **Save Settings** to apply your changes, or click **Cancel Changes** to cancel your changes. Click **Help** for more information.

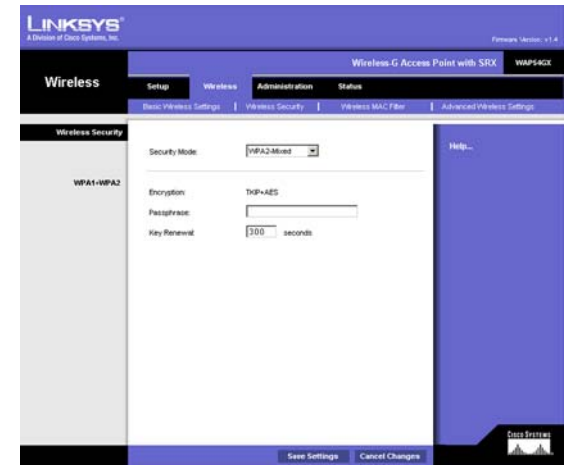


Figure 6-7: Wireless Security - WPA2-Mixed Screen

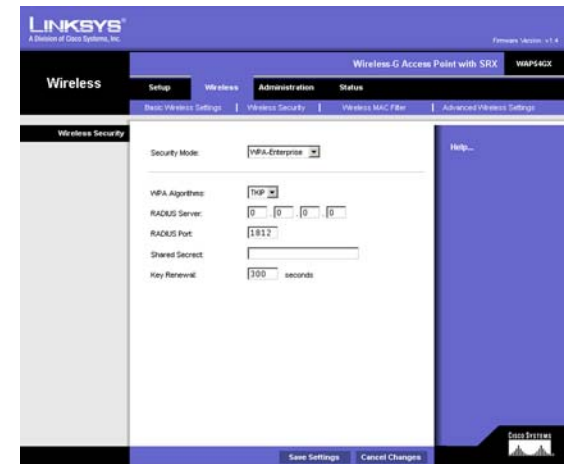


Figure 6-8: Wireless Security - WPA-Enterprise Screen

radius: a protocol that uses an authentication server to control network access.

server: any computer whose function in a network is to provide user access to files, printing, communications, and other services.

RADIUS

This option features WEP used in coordination with a RADIUS server. (This should only be used when a RADIUS server is connected to the Access Point.)

RADIUS Server. Enter the RADIUS server's IP address.

RADIUS Port. Enter the port number used by the RADIUS server.

Shared Secret. Enter the Shared Secret key used by the Access Point and RADIUS server.

Encryption. Select a level of WEP encryption, **40/64 bits (10 hex digits)** or **104/128 bits (26 hex digits)**.

Passphrase. To generate WEP keys using a Passphrase, enter the Passphrase and click the **Generate** key.

Key 1-4. If you want to manually enter WEP keys, then complete the fields provided. Each WEP key can consist of the letters "A" through "F" and the numbers "0" through "9". It should be 10 characters in length for 64-bit encryption or 26 characters in length for 128-bit encryption.

TX Key. Select which Key to use for data transmissions.

Change these settings as described here and click **Save Settings** to apply your changes, or click **Cancel Changes** to cancel your changes. Click **Help** for more information.

WEP

Encryption. Select a level of WEP encryption, **40/64 bits (10 hex digits)** or **104/128 bits (26 hex digits)**.

Passphrase. To generate WEP keys using a Passphrase, enter the Passphrase and click the **Generate** key.

Key 1-4. If you want to manually enter WEP keys, then complete the fields provided. Each WEP key can consist of the letters "A" through "F" and the numbers "0" through "9". It should be 10 characters in length for 64-bit encryption or 26 characters in length for 128-bit encryption.

TX Key. Select which Key to use for data transmissions.

Change these settings as described here and click **Save Settings** to apply your changes, or click **Cancel Changes** to cancel your changes. Click **Help** for more information.

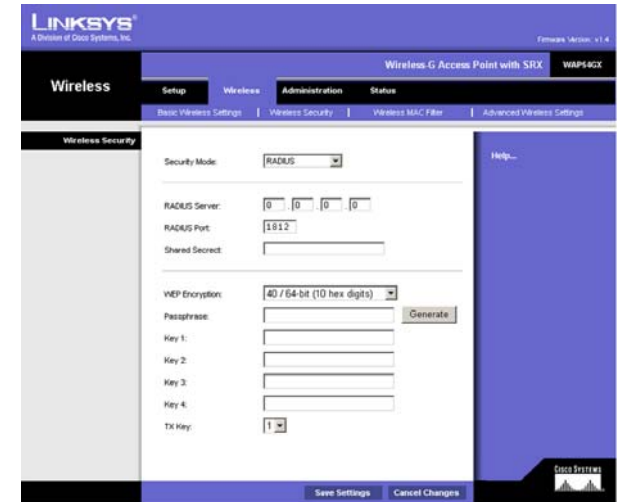


Figure 6-9: Wireless Security - RADIUS Screen

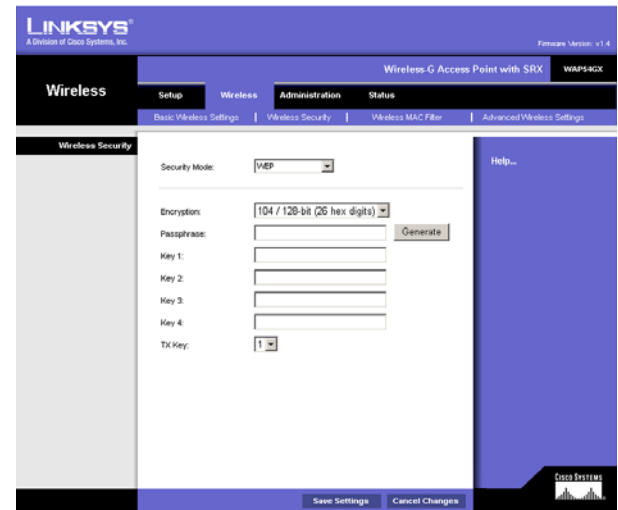


Figure 6-10: Wireless Security - WEP Screen

The Wireless - Wireless MAC Filter Tab

This screen allows you to permit or block wireless access for computers with specific MAC addresses.

Wireless MAC Filter

Access Restriction

If you want to allow access to your wireless network, select **Enable**. Then, click **Permit PCs listed below to access the wireless network**.

MAC 1-50. Enter the MAC addresses of the computers whose access you want to allow. To see a list of MAC addresses for wireless computers or clients, click the **Wireless Client Table** button.

The *Wireless Client List* screen will list MAC addresses for your wireless devices. Click the **Refresh** button to get the most up-to-date information. To add a specific computer to the Mac Address Filter List, click the **Save to MAC Filter** button and then the **Add** button. Click the **Close** button to return to the *Wireless MAC Address Filter* screen.

Click the **Clear** button if you want to delete a MAC addresses you have entered.

Change these settings as described here and click **Save Settings** to apply your changes, or click **Cancel Changes** to cancel your changes. Click **Help** for more information.

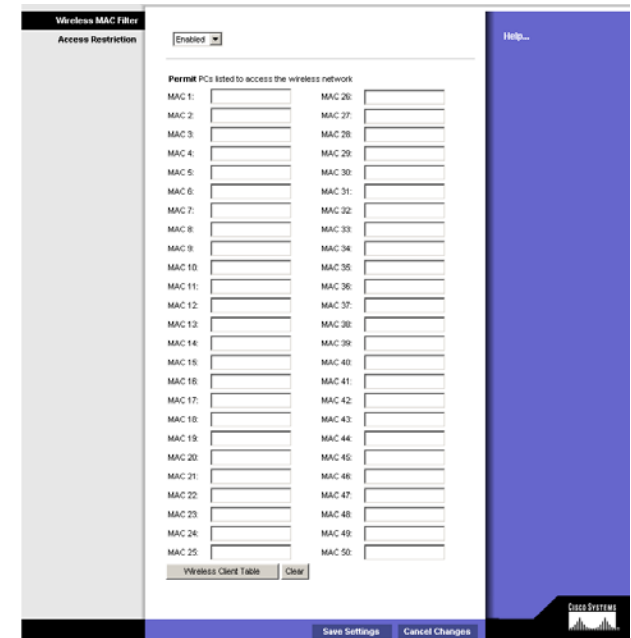


Figure 6-11: Wireless - Wireless MAC Filter Screen

mac address: the unique address that a manufacturer assigns to each networking device.

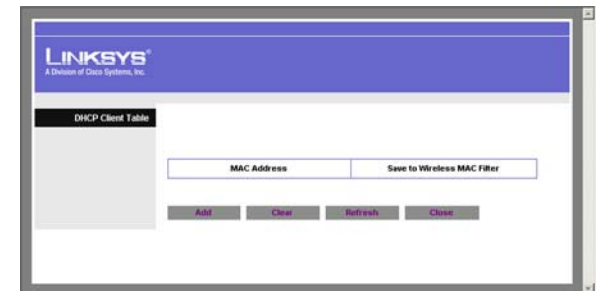


Figure 6-12: Wireless - Wireless Client Table

The Wireless - Advanced Wireless Settings Tab

This screen allows you to configure the advanced settings for the Access Point. In most cases, these settings do not need to be changed.

Advanced Wireless

You can change the data transmission and output power settings for the Access Point.

Authentication Type. Select the authentication method you want the Access Point to use, **Shared Key**, **Open System**, or **Auto**. Shared Key is when both the sender and the recipient share a WEP key for authentication. Open System is when the sender and the recipient do not share a WEP key for authentication. All devices on your network must use the same authentication type. In most cases, keep the default, **Open System**, otherwise use **Auto**.

CTS Protection Mode. The CTS (Clear-To-Send) Protection Mode function boosts the Access Point's ability to catch all Wireless-G transmissions but will severely decrease performance. Select **Enable** if you want to permanently enable this feature, or keep the default, **Disable**, if you want to permanently disable this feature. In most cases, CTS Protection Mode should remain disabled, unless the Wireless-G products are experiencing severe problems trying to transmit to the Access Point in an environment with heavy 802.11b traffic.

ACK Mode. This setting prioritizes QoS for users who also have ACK Mode enabled. Users with Immediate ACK (the default setting) will experience reliable connectivity for normal network use. Burst ACK is faster but less reliable and may also affect long-range wireless performance. The No ACK setting disables the ACK feature. Clients utilizing ACK must have their wireless adapter on the same setting as the Router. This is normally used in a multicast broadcast like video. Do not use this unless you are an advanced user.

Transmission Rates. The range is from 1 to 108Mbps. The rate of data transmission should be set depending on the speed of your wireless network. You can select from a range of transmission speeds, or you can keep the default setting, **Auto** (Default), to have the Access Point automatically use the fastest possible data rate and enable the Auto-Fallback feature. Auto-Fallback will negotiate the best possible connection speed between the Access Point and a wireless client.

Preamble Type. The preamble defines the length of the CRC block for communication between the Access Point and the roaming Network Card. (High network traffic areas should use the shorter preamble type.) Select the appropriate preamble type, **Long Preamble (default)** or **Short Preamble**.

Network Density. This setting is a reflection of the Access Point's range. Setting the density to **Low** provides you with a greater range. Setting the density to **High** gives you a lower range. The default setting is Low.

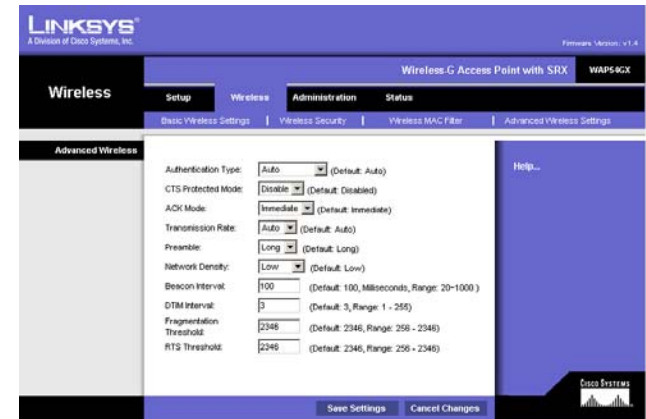


Figure 6-13: Wireless - Advanced Wireless Settings Screen

cts (clear-to-send): a signal sent by a wireless device, signifying that it is ready to receive data.

Beacon Interval. This value indicates the frequency interval of the beacon. A beacon is a packet broadcast by the Access Point to keep the network synchronized. A beacon includes the wireless networks service area, the Access Point address, the Broadcast destination addresses, a time stamp, Delivery Traffic Indicator Maps, and the Traffic Indicator Message (TIM).

DTIM Interval. This value indicates how often the Access Point sends out a Delivery Traffic Indication Message (DTIM). Lower settings result in more efficient networking, while preventing your PC from dropping into power-saving sleep mode. Higher settings allow your PC to enter sleep mode, thus saving power, but interferes with wireless transmissions.

Fragmentation Threshold. This specifies the maximum size a data packet can be before splitting and creating a new packet. It should remain at its default setting of **2346**. A smaller setting means smaller packets, which will create more packets for each transmission. If you have decreased this value and experience high packet error rates, you can increase it again, but it will likely decrease overall network performance. Only minor modifications of this value are recommended.

RTS Threshold. This setting determines how large a packet can be before the Access Point coordinates transmission and reception to ensure efficient communication. This value should remain at its default setting of **2347**. Should you encounter inconsistent data flow, only minor modifications are recommended.

Change these settings as described here and click **Save Settings** to apply your changes, or click **Cancel Changes** to cancel your changes. Click **Help** for more information.

packet: a unit of data sent over a network.

beacon interval: data transmitted on your wireless network that keeps the network synchronized.

dtim (delivery traffic indication message): a message included in data packets that can increase wireless efficiency.

fragmentation: breaking a packet into smaller units when transmitting over a network.

rts (request to send): a networking method of coordinating large packets through the RTS Threshold setting.

The Administration - Management Tab

On this screen you can configure the password as well as back up or restore the Access Point's configuration file.

Management

You should change the password that controls access to the Access Point's Web-based Utility.

AP's Password

Password. Create a Password for the Access Point's Web-based Utility.

Re-enter to Confirm. To confirm the new Password, enter it again in this field.

Backup and Restore

On this screen you can create a backup configuration file or save a configuration file to the Access Point.

Backup Settings. To save a backup configuration file on a computer, click the **Backup Settings** button and follow the on-screen instructions.

Restore Settings. To upload a configuration file to the Access Point, click the **Restore Settings** button and follow the on-screen instructions.

Change these settings as described here and click **Save Settings** to apply your changes, or click **Cancel Changes** to cancel your changes. Click **Help** for more information.

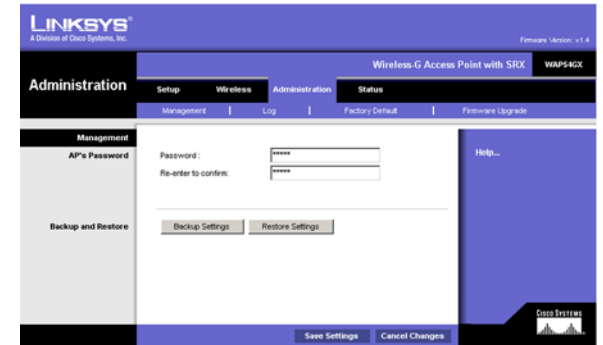


Figure 6-14: Administration - Management Screen

The Administration - Log Tab

On this screen you can configure the log settings.

Management

You can have logs that keep track of the Access Point's activities.

Log

To enable the Log support feature, select **Enabled**. Otherwise, select **Disabled**.

Logviewer IP Address. If you have chosen to monitor the Access Point's traffic, then you can designate a PC that will receive permanent log files periodically. In the field provided, enter the IP address of this PC. To view these permanent logs, you must use Logviewer software, which can be downloaded free of charge from www.linksys.com.

View Log. To see a temporary log of the Access Point's most recent activities, click this button. Click the **Save Log** button to save the log activity to a file. Click **Refresh** to refresh the screen. Click **Clear** to clear the entries. Click **Close** to close the screen.

Change these settings as described here and click **Save Settings** to apply your changes, or click **Cancel Changes** to cancel your changes. Click **Help** for more information.



Figure 6-15: Administration - Log Screen

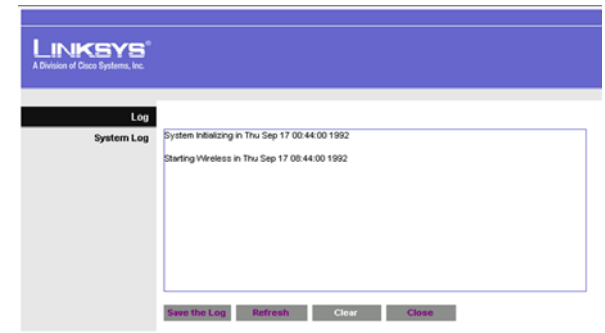


Figure 6-16: View Log Screen

The Administration - Factory Defaults Tab

On this screen you can restore the Access Point's factory default settings.

Management

Write down any custom settings before you restore the factory defaults. Once the Access Point is reset, you will have to re-enter all of your configuration settings.

Factory Defaults

Restore Factory Defaults. To restore the Access Point's factory default settings, click this button. Then follow the on-screen instructions.

Click **Help** for more information.

The Administration - Firmware Upgrade Tab

On this screen you can upgrade the Access Point's firmware. Do not upgrade the firmware unless you are experiencing problems with the Access Point or the new firmware has a feature you want to use.

Firmware Upgrade

Before you upgrade the Access Point's firmware, write down all of your custom settings. After you upgrade its firmware, you will have to re-enter all of your configuration settings. To upgrade the Access Point's firmware:

1. Download the firmware upgrade file from the Linksys website, www.linksys.com.
2. Extract the firmware upgrade file on your computer.
3. On the *Firmware Upgrade* screen, enter the location of the firmware upgrade file in the field provided, or click the **Browse** button to find the file.
4. Click the **Upgrade** button, and follow the on-screen instructions.

Click **Help** for more information.



Figure 6-17: Administration - Factory Defaults Screen



Figure 6-18: Administration - Firmware Upgrade Screen

upgrade: to replace existing software or firmware with a newer version

The Status - Local Network Tab

The *Local Network* screen displays the Access Point's current status information for the local network.

AP's Information

Firmware Version. This is the version of the Access Point's current firmware.

Local Network

MAC Address. The MAC address of the Access Point's Local Area Network (LAN) interface is displayed here.

AP's IP Address. This shows the Access Point's IP Address, as it appears on your local network.

Subnet Mask. This shows the Access Point's Subnet Mask.

Default Gateway. Displayed here is the IP address of the Access Point's Default Gateway.

Click **Help** for more information.



Figure 6-19: Status - Local Network Screen

The Status - Wireless Network Tab

The *Wireless Network* screen displays the Access Point's current status information for its wireless network.

Wireless Network

MAC Address. The MAC Address of the Access Point's wireless interface is displayed here.

Mode. The Access Point's mode is displayed here.

Network Name (SSID). The Access Point's main SSID is displayed here.

Channel. The Access Point's Channel setting for wireless broadcast is shown here.

Security. The wireless security setting for the Access Point is displayed here.

SSID Broadcast. Shown here is the setting of the Access Point's SSID Broadcast feature.

Click **Help** for more information.



Figure 6-20: Status - Wireless Network Screen

Appendix A: Troubleshooting

This appendix provides solutions to problems that may occur during the installation and operation of the Wireless-G Access Point with SRX. Read the description below to solve your problems. If you can't find an answer here, check the Linksys website at www.linksys.com.

Frequently Asked Questions

Can the Access Point act as my DHCP server?

No. The Access Point is nothing more than a wireless hub, and as such cannot be configured to handle DHCP capabilities.

Can I run an application from a remote computer over the wireless network?

This will depend on whether or not the application is designed to be used over a network. Consult the application's user guide to determine if it supports operation over a network.

Can I play multiplayer games with other users of the wireless network?

Yes, as long as the game supports multiple players over a LAN (local area network). Refer to the game's user guide for more information.

What is the IEEE 802.11b standard?

It is one of the IEEE standards for wireless networks. The 802.11b standard allows wireless networking hardware from different manufacturers to communicate, provided that the hardware complies with the 802.11b standard. The 802.11b standard states a maximum data transfer rate of 11Mbps and an operating frequency of 2.4GHz.

What is the IEEE 802.11g standard?

It is one of the IEEE standards for wireless networks. The 802.11g standard allows wireless networking hardware from different manufacturers to communicate, provided that the hardware complies with the 802.11g standard. The 802.11g standard states a maximum data transfer rate of 54Mbps and an operating frequency of 2.4GHz.

What IEEE 802.11b features are supported?

The product supports the following IEEE 802.11 functions:

- CSMA/CA plus Acknowledge protocol
- Multi-Channel Roaming
- Automatic Rate Selection
- RTS/CTS feature
- Fragmentation
- Power Management

What IEEE 802.11g features are supported?

The product supports the following IEEE 802.11g functions:

- CSMA/CA plus Acknowledge protocol
- OFDM protocol
- Multi-Channel Roaming
- Automatic Rate Selection
- RTS/CTS feature
- Fragmentation
- Power Management

What is Ad-hoc?

An Ad-hoc wireless LAN is a group of computers, each with a WLAN adapter, connected as an independent wireless LAN. An Ad-hoc wireless LAN is applicable at a departmental scale for a branch or SOHO operation.

What is Infrastructure?

An integrated wireless and wired LAN is called an Infrastructure configuration. Infrastructure is applicable to enterprise scale for wireless access to a central database, or wireless application for mobile workers.

What is roaming?

Roaming is the ability of a portable computer to communicate continuously while its user is moving freely throughout an area greater than that covered by a single Access Point. Before using the roaming function, the user must make sure that the computer is set to the same channel number as the Access Point of the dedicated coverage area.

To achieve true seamless connectivity, the wireless LAN must incorporate a number of different functions. Each node and Access Point, for example, must always acknowledge receipt of each message. Each node must maintain contact with the wireless network even when not actually transmitting data. Achieving these functions simultaneously requires a dynamic RF networking technology that links Access Points and nodes. In such a system, the user's end node undertakes a search for the best possible access to the system. First, it evaluates such factors as signal strength and quality, as well as the message load currently being carried by each Access Point and the distance of each Access Point to the wired backbone. Based on that information, the node next selects the right Access Point and registers its address. Communications between end node and host computer can then be transmitted up and down the backbone.

As the user moves on, the end node's RF transmitter regularly checks the system to determine whether it is in touch with the original Access Point or whether it should seek a new one. When a node no longer receives acknowledgment from its original Access Point, it undertakes a new search. Upon finding a new Access Point, it then re-registers, and the communication process continues.

What is the ISM band?

The FCC and their counterparts outside of the U.S. have set aside bandwidth for unlicensed use in the ISM (Industrial, Scientific and Medical) band. Spectrum in the vicinity of 2.4 GHz, in particular, is being made available worldwide. This presents a truly revolutionary opportunity to place convenient high speed wireless capabilities in the hands of users around the globe.

What is Spread Spectrum?

Spread Spectrum technology is a wideband radio frequency technique developed by the military for use in reliable, secure, mission-critical communications systems. It is designed to trade off bandwidth efficiency for reliability, integrity, and security. In other words, more bandwidth is consumed than in the case of narrowband transmission, but the trade-off produces a signal that is, in effect, louder and thus easier to detect, provided that the receiver knows the parameters of the spread-spectrum signal being broadcast. If a receiver is not tuned to the right frequency, a spread-spectrum signal looks like background noise. There are two main alternatives, Direct Sequence Spread Spectrum (DSSS) and Frequency Hopping Spread Spectrum (FHSS).

What is DSSS? What is FHSS? And what are their differences?

Frequency Hopping Spread Spectrum (FHSS) uses a narrowband carrier that changes frequency in a pattern that is known to both transmitter and receiver. Properly synchronized, the net effect is to maintain a single logical channel. To an unintended receiver, FHSS appears to be short-duration impulse noise. Direct Sequence Spread Spectrum (DSSS) generates a redundant bit pattern for each bit to be transmitted. This bit pattern is called a chip (or chipping code). The longer the chip, the greater the probability that the original data can be recovered. Even if one or more bits in the chip are damaged during transmission, statistical techniques embedded in the radio can recover the original data without the need for retransmission. To an unintended receiver, DSSS appears as low power wideband noise and is rejected (ignored) by most narrowband receivers.

Would the information be intercepted while transmitting on air?

WLAN features two-fold protection in security. On the hardware side, as with Direct Sequence Spread Spectrum technology, it has the inherent security feature of scrambling. On the software side, the WLAN series offers a variety of wireless security methods to enhance security and access control. Users can set it up depending upon their needs.

Can Linksys wireless products support file and printer sharing?

Linksys wireless products perform the same function as LAN products. Therefore, Linksys wireless products can work with NetWare, Windows NT/2000, or other LAN operating systems to support printer or file sharing.

What is WEP?

WEP is Wired Equivalent Privacy, a data privacy mechanism based on a 40-bit shared-key algorithm, as described in the IEEE 802.11 standard.

What is a MAC Address?

The Media Access Control (MAC) address is a unique number assigned by the manufacturer to any Ethernet networking device, such as a network adapter, that allows the network to identify it at the hardware level. For all practical purposes, this number is usually permanent. Unlike IP addresses, which can change every time a computer logs on to the network, the MAC address of a device stays the same, making it a valuable identifier for the network.

How do I avoid interference?

Using multiple Access Points on the same channel and in close proximity to one another will generate interference. When employing multiple Access Points, make sure to operate each one on a different channel (frequency).

How do I reset the Access Point?

Press the Reset button on the back of the Access Point for about ten seconds. This will reset the unit to its default settings.

How do I resolve issues with signal loss?

There is no way to know the exact range of your wireless network without testing. Every obstacle placed between an Access Point and wireless PC will create signal loss. Leaded glass, metal, concrete floors, water, and walls will inhibit the signal and reduce range. Start with your Access Point and your wireless PC in the same room and move it away in small increments to determine the maximum range in your environment.

You may also try using different channels, as this may eliminate interference affecting only one channel. Also, open the Access Point's Web-based Utility. Click the **Wireless** tab and then the **Advanced Wireless** tab. Make sure the Output Power is set to 100%.

Does the Access Point function as a firewall?

No. The Access Point is only a bridge from wired Ethernet to wireless clients.

I have excellent signal strength, but I cannot see my network.

Wireless security, such as WEP or WPA, is probably enabled on the Access Point, but not on your wireless adapter (or vice versa). Verify that the same wireless security settings are being used on all devices in your wireless network.

What is the maximum number of users the Access Point can handle?

No more than 65, but this depends on the volume of data and may be fewer if many users create a large amount of network traffic.

Appendix B: Wireless Security

Linksys wants to make wireless networking as safe and easy for you as possible. The current generation of Linksys products provide several network security features, but they require specific action on your part for implementation. So, keep the following in mind whenever you are setting up or using your wireless network.

Security Precautions

The following is a complete list of security precautions to take (as shown in this User Guide) (at least steps 1 through 5 should be followed):

1. Change the default SSID.
2. Disable SSID Broadcast.
3. Change the default password for the Administrator account.
4. Enable MAC Address Filtering.
5. Change the SSID periodically.
6. Use the highest encryption algorithm possible. Use WPA if it is available. Please note that this may reduce your network performance.
7. Change the WEP encryption keys periodically.

To ensure network security, steps one through five should be followed, at least.

Security Threats Facing Wireless Networks

Wireless networks are easy to find. Hackers know that in order to join a wireless network, wireless networking products first listen for “beacon messages”. These messages can be easily decrypted and contain much of the network’s information, such as the network’s SSID (Service Set Identifier). Here are the steps you can take:

Change the administrator’s password regularly. With every wireless networking device you use, keep in mind that network settings (SSID, WEP keys, etc.) are stored in its firmware. Your network administrator is the only person who can change network settings. If a hacker gets a hold of the administrator’s password, he, too, can change those settings. So, make it harder for a hacker to get that information. Change the administrator’s password regularly.



NOTE: Some of these security features are available only through the network router or access point. Refer to the router or access point’s documentation for more information.

SSID. There are several things to keep in mind about the SSID:

1. Disable Broadcast
2. Make it unique
3. Change it often

Most wireless networking devices will give you the option of broadcasting the SSID. While this option may be more convenient, it allows anyone to log into your wireless network. This includes hackers. So, don't broadcast the SSID.

Wireless networking products come with a default SSID set by the factory. (The Linksys default SSID is "linksys".) Hackers know these defaults and can check these against your network. Change your SSID to something unique and not something related to your company or the networking products you use.

Change your SSID regularly so that any hackers who have gained access to your wireless network will have to start from the beginning in trying to break in.

MAC Addresses. Enable MAC Address filtering. MAC Address filtering will allow you to provide access to only those wireless nodes with certain MAC Addresses. This makes it harder for a hacker to access your network with a random MAC Address.

WEP Encryption. Wired Equivalent Privacy (WEP) is often looked upon as a cure-all for wireless security concerns. This is overstating WEP's ability. Again, this can only provide enough security to make a hacker's job more difficult.

There are several ways that WEP can be maximized:

1. Use the highest level of encryption possible
2. Use "Shared Key" authentication
3. Change your WEP key regularly

WPA. Wi-Fi Protected Access (WPA) is the newest and best available standard in Wi-Fi security. Four modes are available: WPA-Personal, WPA2-Personal, WPA-Enterprise, and RADIUS. WPA-Personal gives you a choice of two encryption methods: TKIP (Temporal Key Integrity Protocol), which utilizes a stronger encryption method and incorporates Message Integrity Code (MIC) to provide protection against hackers, and AES (Advanced Encryption Standard), which utilizes a symmetric 128-Bit block data encryption. WPA2-Personal only uses AES encryption, which is stronger than TKIP. WPA-Enterprise offers two encryption methods, TKIP and AES, with dynamic encryption keys. RADIUS (Remote Authentication Dial-In User Service) utilizes a RADIUS server for authentication.



IMPORTANT: Always remember that each device in your wireless network **MUST** use the same encryption method and encryption key or your wireless network will not function properly.

Wireless-G Access Point with SRX

WPA-Personal. If you do not have a RADIUS server, select the type of algorithm you want to use, TKIP or AES, and enter a password in the *Passphrase* field of 8-63 characters.

WPA2-Personal. Enter a password in the *Passphrase* field of 8-63 characters.

WPA-Enterprise. WPA used in coordination with a RADIUS server. (This should only be used when a RADIUS server is connected to the Router or other device.) WPA-Enterprise offers two encryption methods, TKIP and AES, with dynamic encryption keys. Enter the RADIUS server's IP Address and port number, along with a key shared between the device and the server. Last, enter a Group Key Renewal period, which instructs the device how often it should change the encryption keys.

RADIUS. WEP used in coordination with a RADIUS server. (This should only be used when a RADIUS server is connected to the Router or other device.) First, enter the RADIUS server's IP Address and port number, along with a key shared between the device and the server. Then, select a WEP key and a level of WEP encryption, and either generate a WEP key through the Passphrase or enter the WEP key manually.

Implementing encryption may have a negative impact on your network's performance, but if you are transmitting sensitive data over your network, encryption should be used.

These security recommendations should help keep your mind at ease while you are enjoying the most flexible and convenient technology Linksys has to offer.

Appendix C: Upgrading Firmware

The Access Point's firmware is upgraded through the Web-based Utility's Administration - Firmware Upgrade tab. Follow these instructions:

1. Download the firmware upgrade file from the Linksys website, www.linksys.com.
2. Extract the firmware upgrade file on your computer.
3. Open the Access Point's Web-based Utility.
4. Click the **Administration** tab.
5. Click the **Upgrade Firmware** tab.
6. On the *Firmware Upgrade* screen, enter the location of the firmware upgrade file in the field provided, or click the **Browse** button to find the file.
7. Click the **Upgrade** button, and follow the on-screen instructions.

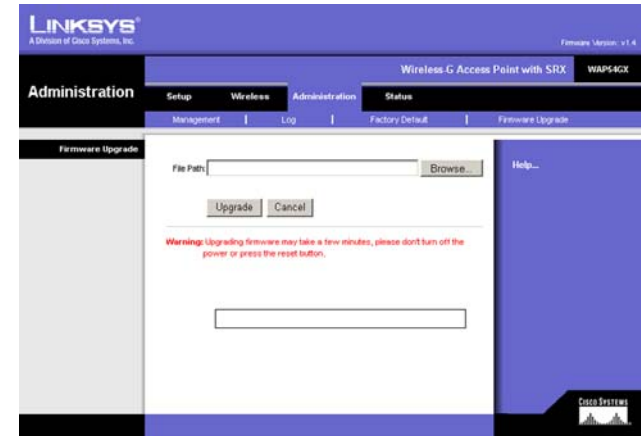


Figure C-1: Firmware Upgrade

Appendix D: Windows Help

Almost all wireless products require Microsoft Windows. Windows is the most used operating system in the world and comes with many features that help make networking easier. These features can be accessed through Windows Help and are described in this appendix.

TCP/IP

Before a computer can communicate with the Access Point, TCP/IP must be enabled. TCP/IP is a set of instructions, or protocol, all PCs follow to communicate over a network. This is true for wireless networks as well. Your PCs will not be able to utilize wireless networking without having TCP/IP enabled. Windows Help provides complete instructions on enabling TCP/IP.

Shared Resources

If you wish to share printers, folder, or files over your network, Windows Help provides complete instructions on utilizing shared resources.

Network Neighborhood/My Network Places

Other PCs on your network will appear under Network Neighborhood or My Network Places (depending upon the version of Windows you're running). Windows Help provides complete instructions on adding PCs to your network.

Appendix E: Glossary

This glossary contains some basic networking terms you may come across when using this product. For more advanced terms, see the complete Linksys glossary at <http://www.linksys.com/glossary>.

Access Point - A device that allows wireless-equipped computers and other devices to communicate with a wired network. Also used to expand the range of a wireless network.

Ad-hoc - A group of wireless devices communicating directly with each other (peer-to-peer) without the use of an access point.

AES (Advanced Encryption Standard) - A security method that uses symmetric 128-bit block data encryption.

Bandwidth - The transmission capacity of a given device or network.

Bit - A binary digit.

Boot - To start a device and cause it to start executing instructions.

Broadband - An always-on, fast Internet connection.

Browser - An application program that provides a way to look at and interact with all the information on the World Wide Web.

Byte - A unit of data that is usually eight bits long.

Cable Modem - A device that connects a computer to the cable television network, which in turn connects to the Internet.

Daisy Chain - A method used to connect devices in a series, one after the other.

DDNS (Dynamic Domain Name System) - Allows the hosting of a website, FTP server, or e-mail server with a fixed domain name (e.g., www.xyz.com) and a dynamic IP address.

Default Gateway - A device that forwards Internet traffic from your local area network.

DHCP (Dynamic Host Configuration Protocol) - A networking protocol that allows administrators to assign temporary IP addresses to network computers by "leasing" an IP address to a user for a limited amount of time, instead of assigning permanent IP addresses.

Wireless-G Access Point with SRX

DMZ (Demilitarized Zone) - Removes the Router's firewall protection from one PC, allowing it to be "seen" from the Internet.

DNS (Domain Name Server) - The IP address of your ISP's server, which translates the names of websites into IP addresses.

Domain - A specific name for a network of computers.

Download - To receive a file transmitted over a network.

DSL (Digital Subscriber Line) - An always-on broadband connection over traditional phone lines.

Dynamic IP Address - A temporary IP address assigned by a DHCP server.

EAP (Extensible Authentication Protocol) - A general authentication protocol used to control network access. Many specific authentication methods work within this framework.

Encryption - Encoding data transmitted in a network.

Ethernet - IEEE standard network protocol that specifies how data is placed on and retrieved from a common transmission medium.

Firewall - A set of related programs located at a network gateway server that protects the resources of a network from users from other networks.

Firmware - The programming code that runs a networking device.

FTP (File Transfer Protocol) - A protocol used to transfer files over a TCP/IP network.

Full Duplex - The ability of a networking device to receive and transmit data simultaneously.

Gateway - A device that interconnects networks with different, incompatible communications protocols.

Half Duplex - Data transmission that can occur in two directions over a single line, but only one direction at a time.

HTTP (HyperText Transport Protocol) - The communications protocol used to connect to servers on the World Wide Web.

Infrastructure - A wireless network that is bridged to a wired network via an access point.

IP (Internet Protocol) - A protocol used to send data over a network.

Wireless-G Access Point with SRX

IP Address - The address used to identify a computer or device on a network.

IPCONFIG - A Windows 2000 and XP utility that displays the IP address for a particular networking device.

IPSec (Internet Protocol Security) - A VPN protocol used to implement secure exchange of packets at the IP layer.

ISP (Internet Service Provider) - A company that provides access to the Internet.

LAN - The computers and networking products that make up your local network.

MAC (Media Access Control) Address - The unique address that a manufacturer assigns to each networking device.

Mbps (MegaBits Per Second) - One million bits per second; a unit of measurement for data transmission.

NAT (Network Address Translation) - NAT technology translates IP addresses of a local area network to a different IP address for the Internet.

Network - A series of computers or devices connected for the purpose of data sharing, storage, and/or transmission between users.

Packet - A unit of data sent over a network.

Passphrase - Used much like a password, a passphrase simplifies the WEP encryption process by automatically generating the WEP encryption keys for Linksys products.

Ping (Packet Internet Groper) - An Internet utility used to determine whether a particular IP address is online.

POP3 (Post Office Protocol 3) - A standard mail server commonly used on the Internet.

Port - The connection point on a computer or networking device used for plugging in cables or adapters.

Power over Ethernet (PoE) - A technology enabling an Ethernet network cable to deliver both data and power.

PPPoE (Point to Point Protocol over Ethernet) - A type of broadband connection that provides authentication (username and password) in addition to data transport.

PPTP (Point-to-Point Tunneling Protocol) - A VPN protocol that allows the Point to Point Protocol (PPP) to be tunneled through an IP network. This protocol is also used as a type of broadband connection in Europe.

RADIUS (Remote Authentication Dial-In User Service) - A protocol that uses an authentication server to control network access.

Wireless-G Access Point with SRX

RJ-45 (Registered Jack-45) - An Ethernet connector that holds up to eight wires.

Roaming - The ability to take a wireless device from one access point's range to another without losing the connection.

Router - A networking device that connects multiple networks together.

Server - Any computer whose function in a network is to provide user access to files, printing, communications, and other services.

SMTP (Simple Mail Transfer Protocol) - The standard e-mail protocol on the Internet.

SNMP (Simple Network Management Protocol) - A widely used network monitoring and control protocol.

SPI (Stateful Packet Inspection) Firewall - A technology that inspects incoming packets of information before allowing them to enter the network.

SSID (Service Set Identifier) - Your wireless network's name.

Static IP Address - A fixed address assigned to a computer or device that is connected to a network.

Static Routing - Forwarding data in a network via a fixed path.

Subnet Mask - An address code that determines the size of the network.

Switch - 1. A data switch that connects computing devices to host computers, allowing a large number of devices to share a limited number of ports. 2. A device for making, breaking, or changing the connections in an electrical circuit.

TCP (Transmission Control Protocol) - A network protocol for transmitting data that requires acknowledgement from the recipient of data sent.

TCP/IP (Transmission Control Protocol/Internet Protocol) - A set of instructions PCs use to communicate over a network.

Telnet - A user command and TCP/IP protocol used for accessing remote PCs.

TFTP (Trivial File Transfer Protocol) - A version of the TCP/IP FTP protocol that has no directory or password capability.

Throughput - The amount of data moved successfully from one node to another in a given time period.

Wireless-G Access Point with SRX

TKIP (Temporal Key Integrity Protocol) - a wireless encryption protocol that provides dynamic encryption keys for each packet transmitted.

Topology - The physical layout of a network.

TX Rate - Transmission Rate.

Upgrade - To replace existing software or firmware with a newer version.

Upload - To transmit a file over a network.

URL (Uniform Resource Locator) - The address of a file located on the Internet.

VPN (Virtual Private Network) - A security measure to protect data as it leaves one network and goes to another over the Internet.

WAN (Wide Area Network)- The Internet.

WEP (Wired Equivalent Privacy) - A method of encrypting network data transmitted on a wireless network for greater security.

WLAN (Wireless Local Area Network) - A group of computers and associated devices that communicate with each other wirelessly.

WPA (Wi-Fi Protected Access) - A wireless security protocol using TKIP (Temporal Key Integrity Protocol) encryption, which can be used in conjunction with a RADIUS server.

Appendix F: Specifications

Model	WAP54GX
Standards	IEEE 802.11g, IEEE 802.11b, IEEE 802.3, IEEE 802.3u
Ports/Buttons	Reset, Ethernet, Power
Cabling Type	RJ-45
LEDs	Ethernet, Wireless, and Power
Transmit Power	802.11g: Typ. 19dBm @ Normal Temp Range 802.11b: Typ:19dBm @ Normal Temp Range
Security Features	WPA/WPA2, WEP Encryption, MAC Filtering, SSID Broadcast enable/disable
WEP Key Bits	64/128-bit
Dimensions (W x H x D)	5.51" x 5.51" x 1.30" (140 mm x 140 mm x 33 mm)
Unit Weight	12.8 oz. (0.36 kg)
Power	External, 12V DC
Certifications	FCC, CE, Wi-Fi
Operating Temp.	0°C to 40°C (32°F to 104°F)
Storage Temp.	0°C to 70°C (-40°F to 158°F)

Wireless-G Access Point with SRX

Operating Humidity 10% to 85% Non-Condensing

Storage Humidity 5% to 90% Non-Condensing

Appendix G: Warranty Information

LIMITED WARRANTY

Linksys warrants to You that, for a period of three years (the “Warranty Period”), your Linksys Product will be substantially free of defects in materials and workmanship under normal use. Your exclusive remedy and Linksys' entire liability under this warranty will be for Linksys at its option to repair or replace the Product or refund Your purchase price less any rebates. This limited warranty extends only to the original purchaser.

If the Product proves defective during the Warranty Period call Linksys Technical Support in order to obtain a Return Authorization Number, if applicable. **BE SURE TO HAVE YOUR PROOF OF PURCHASE ON HAND WHEN CALLING.** If You are requested to return the Product, mark the Return Authorization Number clearly on the outside of the package and include a copy of your original proof of purchase. **RETURN REQUESTS CANNOT BE PROCESSED WITHOUT PROOF OF PURCHASE.** You are responsible for shipping defective Products to Linksys. Linksys pays for UPS Ground shipping from Linksys back to You only. Customers located outside of the United States of America and Canada are responsible for all shipping and handling charges.

ALL IMPLIED WARRANTIES AND CONDITIONS OF MERCHANTABILITY OR FITNESS FOR A PARTICULAR PURPOSE ARE LIMITED TO THE DURATION OF THE WARRANTY PERIOD. ALL OTHER EXPRESS OR IMPLIED CONDITIONS, REPRESENTATIONS AND WARRANTIES, INCLUDING ANY IMPLIED WARRANTY OF NON-INFRINGEMENT, ARE DISCLAIMED. Some jurisdictions do not allow limitations on how long an implied warranty lasts, so the above limitation may not apply to You. This warranty gives You specific legal rights, and You may also have other rights which vary by jurisdiction.

This warranty does not apply if the Product (a) has been altered, except by Linksys, (b) has not been installed, operated, repaired, or maintained in accordance with instructions supplied by Linksys, or (c) has been subjected to abnormal physical or electrical stress, misuse, negligence, or accident. In addition, due to the continual development of new techniques for intruding upon and attacking networks, Linksys does not warrant that the Product will be free of vulnerability to intrusion or attack.

TO THE EXTENT NOT PROHIBITED BY LAW, IN NO EVENT WILL LINKSYS BE LIABLE FOR ANY LOST DATA, REVENUE OR PROFIT, OR FOR SPECIAL, INDIRECT, CONSEQUENTIAL, INCIDENTAL OR PUNITIVE DAMAGES, REGARDLESS OF THE THEORY OF LIABILITY (INCLUDING NEGLIGENCE), ARISING OUT OF OR RELATED TO THE USE OF OR INABILITY TO USE THE PRODUCT (INCLUDING ANY SOFTWARE), EVEN IF LINKSYS HAS BEEN ADVISED OF THE POSSIBILITY OF SUCH DAMAGES. IN NO EVENT WILL LINKSYS' LIABILITY EXCEED THE AMOUNT PAID BY YOU FOR THE PRODUCT. The foregoing limitations will apply even if any warranty or remedy provided under this Agreement fails of its essential purpose. Some jurisdictions do not allow the exclusion or limitation of incidental or consequential damages, so the above limitation or exclusion may not apply to You.

Please direct all inquiries to: Linksys, P.O. Box 18558, Irvine, CA 92623.

Appendix H: Regulatory Information

FCC Statement

This product has been tested and complies with the specifications for a Class B digital device, pursuant to Part 15 of the FCC Rules. These limits are designed to provide reasonable protection against harmful interference in a residential installation. This equipment generates, uses, and can radiate radio frequency energy and, if not installed and used according to the instructions, may cause harmful interference to radio communications. However, there is no guarantee that interference will not occur in a particular installation. If this equipment does cause harmful interference to radio or television reception, which is found by turning the equipment off and on, the user is encouraged to try to correct the interference by one or more of the following measures:

- Reorient or relocate the receiving antenna
- Increase the separation between the equipment or devices
- Connect the equipment to an outlet other than the receiver's
- Consult a dealer or an experienced radio/TV technician for assistance

FCC Radiation Exposure Statement

This equipment complies with FCC radiation exposure limits set forth for an uncontrolled environment. This equipment should be installed and operated with minimum distance 20cm between the radiator and your body.

Safety Notices

Caution: To reduce the risk of fire, use only No.26 AWG or larger telecommunication line cord.

Do not use this product near water, for example, in a wet basement or near a swimming pool.

Avoid using this product during an electrical storm. There may be a remote risk of electric shock from lightning.

Industry Canada (Canada)

This device complies with Canadian ICES-003 and RSS210 rules.

Cet appareil est conforme aux normes NMB-003 et RSS210 d'Industry Canada.

User Information for Consumer Products Covered by EU Directive 2002/96/EC on Waste Electric and Electronic Equipment (WEEE)

This document contains important information for users with regards to the proper disposal and recycling of Linksys products. Consumers are required to comply with this notice for all electronic products bearing the following symbol:



English

Environmental Information for Customers in the European Union

European Directive 2002/96/EC requires that the equipment bearing this symbol on the product and/or its packaging must not be disposed of with unsorted municipal waste. The symbol indicates that this product should be disposed of separately from regular household waste streams. It is your responsibility to dispose of this and other electric and electronic equipment via designated collection facilities appointed by the government or local authorities. Correct disposal and recycling will help prevent potential negative consequences to the environment and human health. For more detailed information about the disposal of your old equipment, please contact your local authorities, waste disposal service, or the shop where you purchased the product.

Ceština/Czech

Informace o ochraně životního prostředí pro zákazníky v zemích Evropské unie

Evropská směrnice 2002/96/ES zakazuje, aby zařízení označené tímto symbolem na produktu anebo na obalu bylo likvidováno s netříděným komunálním odpadem. Tento symbol udává, že daný produkt musí být likvidován odděleně od běžného komunálního odpadu. Odpovídáte za likvidaci tohoto produktu a dalších elektrických a elektronických zařízení prostřednictvím určených sběrných míst stanovených vládou nebo místními úřady. Správná likvidace a recyklace pomáhá předcházet potenciálním negativním dopadům na životní prostředí a lidské zdraví. Podrobnější informace o likvidaci starého vybavení si laskavě vyžádejte od místních úřadů, podniku zabývajícího se likvidací komunálních odpadů nebo obchodu, kde jste produkt zakoupili.

Dansk/Danish

Miljøinformation for kunder i EU

EU-direktiv 2002/96/EF kræver, at udstyr der bærer dette symbol på produktet og/eller emballagen ikke må bortskaffes som usorteret kommunalt affald. Symbolet betyder, at dette produkt skal bortskaffes adskilt fra det almindelige husholdningsaffald. Det er dit ansvar at bortskaffe dette og andet elektrisk og elektronisk udstyr via bestemte indsamlingssteder udpeget af staten eller de lokale myndigheder. Korrekt bortskaffelse og genvinding vil hjælpe med til at undgå mulige skader for miljøet og menneskers sundhed. Kontakt venligst de lokale myndigheder, renovationstjenesten eller den butik, hvor du har købt produktet, angående mere detaljeret information om bortskaffelse af dit gamle udstyr.

Deutsch/German

Umweltinformation für Kunden innerhalb der Europäischen Union

Die Europäische Richtlinie 2002/96/EC verlangt, dass technische Ausrüstung, die direkt am Gerät und/oder an der Verpackung mit diesem Symbol versehen ist nicht zusammen mit unsortiertem Gemeindeabfall entsorgt werden darf. Das Symbol weist darauf hin, dass das Produkt von regulärem Haushaltsmüll getrennt entsorgt werden sollte. Es liegt in Ihrer Verantwortung, dieses Gerät und andere elektrische und elektronische Geräte über die dafür zuständigen und von der Regierung oder örtlichen Behörden dazu bestimmten Sammelstellen zu entsorgen. Ordnungsgemäßes Entsorgen und Recyceln trägt dazu bei, potentielle negative Folgen für Umwelt und die menschliche Gesundheit zu vermeiden. Wenn Sie weitere Informationen zur Entsorgung Ihrer Altgeräte benötigen, wenden Sie sich bitte an die örtlichen Behörden oder städtischen Entsorgungsdienste oder an den Händler, bei dem Sie das Produkt erworben haben.

Eesti/Estonian

Keskkonnaalane informatsioon Euroopa Liidus asuvatele klientidele

Euroopa Liidu direktiivi 2002/96/EÜ nõuete kohaselt on seadmeid, millel on tootel või pakendil käesolev sümbol, keelatud kõrvaldada koos sorteerimata olmejäätmetega. See sümbol näitab, et toode tuleks kõrvaldada eraldi tavalistest olmejäätmevoogudest. Olete kohustatud kõrvaldama käesoleva ja ka muud elektri- ja elektroonikaseadmed riigi või kohalike ametiasutuste poolt ette nähtud kogumispunktide kaudu. Seadmete korrektne kõrvaldamine ja ringlussevõtt aitab vältida võimalikke negatiivseid tagajärgi keskkonnale ning inimeste tervisele. Vanade seadmete kõrvaldamise kohta täpsema informatsiooni saamiseks võtke palun ühendust kohalike ametiasutustega, jäätmekäitlusfirmaga või kauplusega, kust te toote ostsite.

Español/Spanish

Información medioambiental para clientes de la Unión Europea

La Directiva 2002/96/CE de la UE exige que los equipos que lleven este símbolo en el propio aparato y/o en su embalaje no deben eliminarse junto con otros residuos urbanos no seleccionados. El símbolo indica que el producto en cuestión debe separarse de los residuos domésticos convencionales con vistas a su eliminación. Es responsabilidad suya desechar este y cualesquiera otros aparatos eléctricos y electrónicos a través de los puntos de recogida que ponen a su disposición el gobierno y las autoridades locales. Al desechar y reciclar correctamente estos aparatos estará contribuyendo a evitar posibles consecuencias negativas para el medio ambiente y la salud de las personas. Si desea obtener información más detallada sobre la eliminación segura de su aparato usado, consulte a las autoridades locales, al servicio de recogida y eliminación de residuos de su zona o pregunte en la tienda donde adquirió el producto.

Ελληνικά/Greek

Στοιχεία περιβαλλοντικής προστασίας για πελάτες εντός της Ευρωπαϊκής Ένωσης

Η Κοινοτική Οδηγία 2002/96/EC απαιτεί ότι ο εξοπλισμός ο οποίος φέρει αυτό το σύμβολο στο προϊόν και/ή στη συσκευασία του δεν πρέπει να απορρίπτεται μαζί με τα μικτά κοινотικά απορρίμματα. Το σύμβολο υποδεικνύει ότι αυτό το προϊόν θα πρέπει να απορρίπτεται ξεχωριστά από τα συνήθη οικιακά απορρίμματα. Είστε υπεύθυνος για την απόρριψη του παρόντος και άλλου ηλεκτρικού και ηλεκτρονικού εξοπλισμού μέσω των καθορισμένων εγκαταστάσεων συγκέντρωσης απορριμμάτων οι οποίες παρέχονται από το κράτος ή τις αρμόδιες τοπικές αρχές. Η σωστή απόρριψη και ανακύκλωση συμβάλλει στην πρόληψη πιθανών αρνητικών συνεπειών για το περιβάλλον και την υγεία. Για περισσότερες πληροφορίες σχετικά με την απόρριψη του παλιού σας εξοπλισμού, παρακαλώ επικοινωνήστε με τις τοπικές αρχές, τις υπηρεσίες απόρριψης ή το κατάστημα από το οποίο αγοράσατε το προϊόν.

Français/French

Informations environnementales pour les clients de l'Union européenne

La directive européenne 2002/96/CE exige que l'équipement sur lequel est apposé ce symbole sur le produit et/ou son emballage ne soit pas jeté avec les autres ordures ménagères. Ce symbole indique que le produit doit être éliminé dans un circuit distinct de celui pour les déchets des ménages. Il est de votre responsabilité de jeter ce matériel ainsi que tout autre matériel électrique ou électronique par les moyens de collecte indiqués par le gouvernement et les pouvoirs publics des collectivités territoriales. L'élimination et le recyclage en bonne et due forme ont pour but de lutter contre l'impact néfaste potentiel de ce type de produits sur l'environnement et la santé publique. Pour plus d'informations sur le mode d'élimination de votre ancien équipement, veuillez prendre contact avec les pouvoirs publics locaux, le service de traitement des déchets, ou l'endroit où vous avez acheté le produit.

Italiano/Italian

Informazioni relative all'ambiente per i clienti residenti nell'Unione Europea

La direttiva europea 2002/96/EC richiede che le apparecchiature contrassegnate con questo simbolo sul prodotto e/o sull'imballaggio non siano smaltite insieme ai rifiuti urbani non differenziati. Il simbolo indica che questo prodotto non deve essere smaltito insieme ai normali rifiuti domestici. È responsabilità del proprietario smaltire sia questi prodotti sia le altre apparecchiature elettriche ed elettroniche mediante le specifiche strutture di raccolta indicate dal governo o dagli enti pubblici locali. Il corretto smaltimento ed il riciclaggio aiuteranno a prevenire conseguenze potenzialmente negative per l'ambiente e per la salute dell'essere umano. Per ricevere informazioni più dettagliate circa lo smaltimento delle vecchie apparecchiature in Vostro possesso, Vi invitiamo a contattare gli enti pubblici di competenza, il servizio di smaltimento rifiuti o il negozio nel quale avete acquistato il prodotto.

Latviešu valoda/Latvian

Ekoloģiska informācija klientiem Eiropas Savienības jurisdikcijā

Direktīvā 2002/96/EK ir prasība, ka aprīkojumu, kam pievienota zīme uz paša izstrādājuma vai uz tā iesaiņojuma, nedrīkst izmest nešķīrotā veidā kopā ar komunālajiem atkritumiem (tiem, ko rada vietēji iedzīvotāji un uzņēmumi). Šī zīme nozīmē to, ka šī ierīce ir jāizmet atkritumos tā, lai tā nenonāktu kopā ar parastiem mājtsaimniecības atkritumiem. Jūsu pienākums ir šo un citas elektriskas un elektroniskas ierīces izmest atkritumos, izmantojot īpašus atkritumu savākšanas veidus un līdzekļus, ko nodrošina valsts un pašvaldību iestādes. Ja izmešana atkritumos un pārstrāde tiek veikta pareizi, tad mazinās iespējamais kaitējums dabai un cilvēku veselībai. Sīkākas ziņas par novecojuša aprīkojuma izmešanu atkritumos jūs varat saņemt vietējā pašvaldībā, atkritumu savākšanas dienestā, kā arī veikalā, kur iegādājāties šo izstrādājumu.

Appendix H: Regulatory Information

Lietuvškai/Lithuanian

Aplinkosaugos informacija, skirta Europos Sąjungos vartotojams

Europos direktyva 2002/96/EC numato, kad įrangos, kuri ir (arba) kurios pakuotė yra pažymėta šiuo simboliu, negalima šalinti kartu su nerūšiuotomis komunalinėmis atliekomis. Šis simbolis rodo, kad gaminį reikia šalinti atskirai nuo bendro buitinių atliekų srauto. Jūs privalote užtikrinti, kad ši ir kita elektros ar elektroninė įranga būtų šalinama per tam tikras nacionalinės ar vietinės valdžios nustatytas atliekų rinkimo sistemas. Tinkamai šalinant ir perdurbant atliekas, bus išvengta galimos žalos aplinkai ir žmonių sveikatai. Daugiau informacijos apie jūsų senos įrangos šalinimą gali pateikti vietinės valdžios institucijos, atliekų šalinimo tarnybos arba parduotuvės, kuriose įsigijote tą gaminį.

Malti/Maltese

Informazzjoni Ambjentali għal Kliġenti fl-Unjoni Ewropea

Id-Direttiva Ewropea 2002/96/KE titlob li t-tagħmir li jkun fih is-simbolu fuq il-prodott u/jew fuq l-ippakkjar ma jistax jintrema ma' skart municiġpali li ma għiex isseparat. Is-simbolu jindika li dan il-prodott għandu jintrema separatament minn ma' l-iskart domestiku regolari. Hija responsabbiltà tiegħek li tarmi dan it-tagħmir u kull tagħmir iehor ta' l-elettriku u elettroniku permezz ta' faċilitajiet ta' għbir appuntati apposta mill-gvern jew mill-awtoritajiet lokali. Ir-rimi b'mod korrett u r-riciklagg jghin jipprevjeni konsegwenzi negattivi potenzjali għall-ambjent u għas-saħħa tal-bniedem. Għal aktar informazzjoni dettaljata dwar ir-rimi tat-tagħmir antik tiegħek, jekk jogħġbok ikkuntattja lill-awtoritajiet lokali tiegħek, is-servizzi għar-rimi ta' l-iskart, jew il-hanut minn fejn xtrajt il-prodott.

Magyar/Hungarian

Környezetvédelmi információ az európai uniós vásárlók számára

A 2002/96/EC számú európai uniós irányelv megkívánja, hogy azokat a termékeket, amelyekeken, és/vagy amelyek csomagolásán az alábbi címke megjelenik, tilos a többi szelektálatlan lakossági hulladékkal együtt kidobni. A címke azt jelöli, hogy az adott termék kidobásakor a szokványos háztartási hulladékelszállítási rendszerektől elkülönített eljárást kell alkalmazni. Az Ön felelőssége, hogy ezt, és más elektromos és elektronikus berendezéseit a kormányzati vagy a helyi hatóságok által kijelölt gyűjtőrendszeren keresztül számolja fel. A megfelelő hulladékfeldolgozás segít a környezetre és az emberi egészségre potenciálisan ártalmas negatív hatások megelőzésében. Ha elavult berendezéseinek felszámolásához további részletes információra van szüksége, kérjük, lépjen kapcsolatba a helyi hatóságokkal, a hulladékfeldolgozási szolgálattal, vagy azzal üzlettel, ahol a terméket vásárolta.

Nederlands/Dutch

Milieu-informatie voor klanten in de Europese Unie

De Europese Richtlijn 2002/96/EC schrijft voor dat apparatuur die is voorzien van dit symbool op het product of de verpakking, niet mag worden ingezameld met niet-gescheiden huishoudelijk afval. Dit symbool geeft aan dat het product apart moet worden ingezameld. U bent zelf verantwoordelijk voor de vernietiging van deze en andere elektrische en elektronische apparatuur via de daarvoor door de landelijke of plaatselijke overheid aangewezen inzamelingskanalen. De juiste vernietiging en recycling van deze apparatuur voorkomt mogelijke negatieve gevolgen voor het milieu en de gezondheid. Voor meer informatie over het vernietigen van uw oude apparatuur neemt u contact op met de plaatselijke autoriteiten of afvalverwerkingsdienst, of met de winkel waar u het product hebt aangeschaft.

Norsk/Norwegian

Miljøinformasjon for kunder i EU

EU-direktiv 2002/96/EF krever at utstyr med følgende symbol avbildet på produktet og/eller pakningen, ikke må kastes sammen med usortert avfall. Symbolet indikerer at dette produktet skal håndteres atskilt fra ordinær avfallsinnsamling for husholdningsavfall. Det er ditt ansvar å kvitte deg med dette produktet og annet elektrisk og elektronisk avfall via egne innsamlingsordninger slik myndighetene eller kommunene bestemmer. Korrekt avfallshåndtering og gjenvinning vil være med på å forhindre mulige negative konsekvenser for miljø og helse. For nærmere informasjon om håndtering av det kasserte utstyret ditt, kan du ta kontakt med kommunen, en innsamlingsstasjon for avfall eller butikken der du kjøpte produktet.

Polski/Polish

Informacja dla klientów w Unii Europejskiej o przepisach dotyczących ochrony środowiska

Dyrektywa Europejska 2002/96/EC wymaga, aby sprzęt oznaczony symbolem znajdującym się na produkcie i/lub jego opakowaniu nie był wyrzucany razem z innymi niesortowanymi odpadami komunalnymi. Symbol ten wskazuje, że produkt nie powinien być usuwany razem ze zwykłymi odpadami z gospodarstw domowych. Na Państwu spoczywa obowiązek wyrzucania tego i innych urządzeń elektrycznych oraz elektronicznych w punktach odbioru wyznaczonych przez władze krajowe lub lokalne. Pozbywanie się sprzętu we właściwy sposób i jego recykling pomogą zapobiec potencjalnie negatywnym konsekwencjom dla środowiska i zdrowia ludzkiego. W celu uzyskania szczegółowych informacji o usuwaniu starego sprzętu, prosimy zwrócić się do lokalnych władz, służb oczyszczania miasta lub sklepu, w którym produkt został nabyty.

Português/Portuguese

Informação ambiental para clientes da União Europeia

A Directiva Europeia 2002/96/CE exige que o equipamento que exibe este símbolo no produto e/ou na sua embalagem não seja eliminado junto com os resíduos municipais não separados. O símbolo indica que este produto deve ser eliminado separadamente dos resíduos domésticos regulares. É da sua responsabilidade eliminar este e qualquer outro equipamento eléctrico e electrónico através dos instalações de recolha designadas pelas autoridades governamentais ou locais. A eliminação e reciclagem correctas ajudarão a prevenir as consequências negativas para o ambiente e para a saúde humana. Para obter informações mais detalhadas sobre a forma de eliminar o seu equipamento antigo, contacte as autoridades locais, os serviços de eliminação de resíduos ou o estabelecimento comercial onde adquiriu o produto.

Slovenčina/Slovak

Informácie o ochrane životného prostredia pre zákazníkov v Európskej únii

Podľa európskej smernice 2002/96/ES zariadenie s týmto symbolom na produkte a/alebo jeho balení nesmie byť likvidované spolu s netriedeným komunálnym odpadom. Symbol znamená, že produkt by sa mal likvidovať oddelene od bežného odpadu z domácností. Je vašou povinnosťou likvidovať toto i ostatné elektrické a elektronické zariadenia prostredníctvom špecializovaných zberných zariadení určených vládou alebo miestnymi orgánmi. Správna likvidácia a recyklácia pomôže zabrániť prípadným negatívnym dopadom na životné prostredie a zdravie ľudí. Ak máte záujem o podrobnejšie informácie o likvidácii starého zariadenia, obráťte sa, prosím, na miestne orgány, organizácie zaoberajúce sa likvidáciou odpadov alebo obchod, v ktorom ste si produkt zakúpili.

Slovenčina/Slovene

Okoljske informacije za stranke v Evropski uniji

Evropska direktiva 2002/96/EC prepoveduje odlaganje opreme, označene s tem simbolom – na izdelku in/ali na embalaži – med običajne, nerazvrščene odpadke. Ta simbol opozarja, da je treba izdelek odvreči ločeno od preostalih gospodinjstvih odpadkov. Vaša odgovornost je, da to in preostalo električno in elektronsko opremo odnesete na posebna zbirališča, ki jih določijo državne ustanove ali lokalna uprava. S pravilnim odlaganjem in recikliranjem boste preprečili morebitne škodljive vplive na okolje in zdravje ljudi. Če želite izvedeti več o odlaganju stare opreme, se obrnite na lokalno upravo, odpad ali trgovino, kjer ste izdelek kupili.

Suomi/Finnish

Ympäristöä koskevia tietoja EU-alueen asiakkaille

EU-direktiivi 2002/96/EY edellyttää, että jos laitteistossa on tämä symboli itse tuotteessa ja/tai sen pakkauksessa, laitteistoa ei saa hävittää lajittelemattoman yhdyskuntajätteen mukana. Symboli merkitsee sitä, että tämä tuote on hävitettävä erillään tavallisesta kotitalousjätteestä. Sinun vastuullasi on hävittää tämä elektroniikkatuote ja muut vastaavat elektroniikkatuotteet viemällä tuote tai tuotteet viranomaisten määräämään keräyspisteeseen. Laitteiston oikea hävittäminen estää mahdolliset kielteiset vaikutukset ympäristöön ja ihmisten terveyteen. Lisätietoja vanhan laitteiston oikeasta hävitystavasta saa paikallisilta viranomaisilta, jätteenhävityspalvelusta tai siitä myymälästä, josta ostit tuotteen.

Svenska/Swedish

Miljöinformation för kunder i Europeiska unionen

Det europeiska direktivet 2002/96/EC kräver att utrustning med denna symbol på produkten och/eller förpackningen inte får kastas med osorterat kommunalt avfall. Symbolen visar att denna produkt bör kastas efter att den avskiljts från vanligt hushållsavfall. Det faller på ditt ansvar att kasta denna och annan elektrisk och elektronisk utrustning på fastställda insamlingsplatser utsedda av regeringen eller lokala myndigheter. Korrekt kassering och återvinning skyddar mot eventuella negativa konsekvenser för miljön och personhälsa. För mer detaljerad information om kassering av din gamla utrustning kontaktar du dina lokala myndigheter, avfallshanteringen eller butiken där du köpte produkten.

For more information, visit www.linksys.com.

Appendix I: Contact Information

Need to contact Linksys?

Visit us online for information on the latest products and updates to your existing products at:

<http://www.linksys.com> or
[ftp.linksys.com](ftp://ftp.linksys.com)

Can't find information about a product you want to buy on the web? Do you want to know more about networking with Linksys products? Give our advice line a call at:
Or fax your request in to:

800-546-5797 (LINKSYS)
949-823-3002

If you experience problems with any Linksys product, you can call us at:
Don't wish to call? You can e-mail us at:

800-326-7114
support@linksys.com

If any Linksys product proves defective during its warranty period, you can call the Linksys Return Merchandise Authorization department for obtaining a Return Authorization Number at:
(Details on Warranty and RMA issues can be found in the Warranty Information section in this Guide.)

949-823-3000

Free Manuals Download Website

<http://myh66.com>

<http://usermanuals.us>

<http://www.somanuals.com>

<http://www.4manuals.cc>

<http://www.manual-lib.com>

<http://www.404manual.com>

<http://www.luxmanual.com>

<http://aubethermostatmanual.com>

Golf course search by state

<http://golfingnear.com>

Email search by domain

<http://emailbydomain.com>

Auto manuals search

<http://auto.somanuals.com>

TV manuals search

<http://tv.somanuals.com>