



User's guide

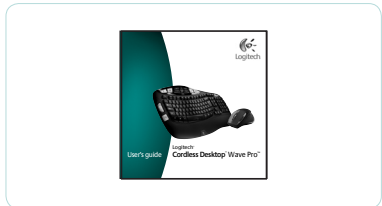
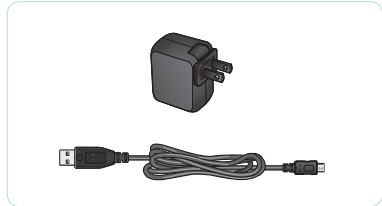
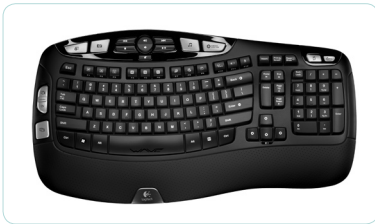
Logitech®
Cordless Desktop® Wave Pro™

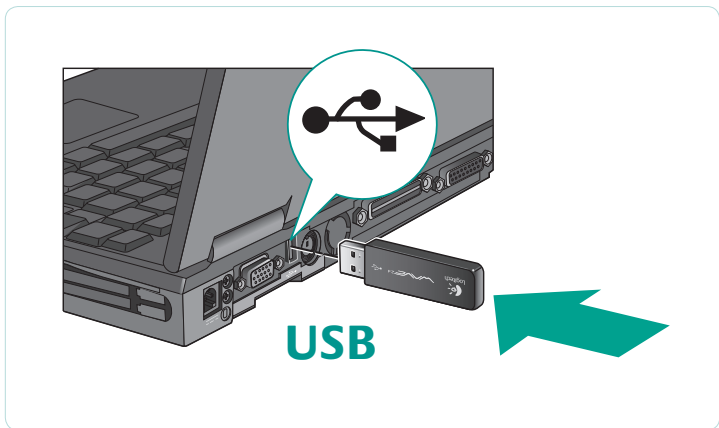
Contents

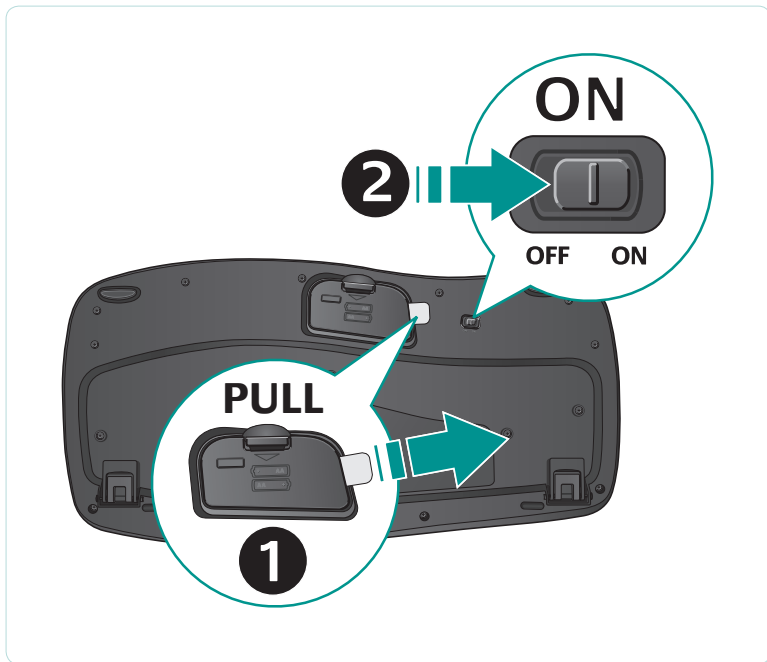
Thank you!.....	4
Package contents.....	5
Installation	6
Keyboard features: hot keys	10
Keyboard features: F-keys	12
Mouse features: scrolling.....	14
Mouse features: buttons and applications	16
Customizing the keyboard and mouse.....	18
Recharging the NiMH mouse battery.....	22
Troubleshooting	23
Technical support telephone numbers.....	25

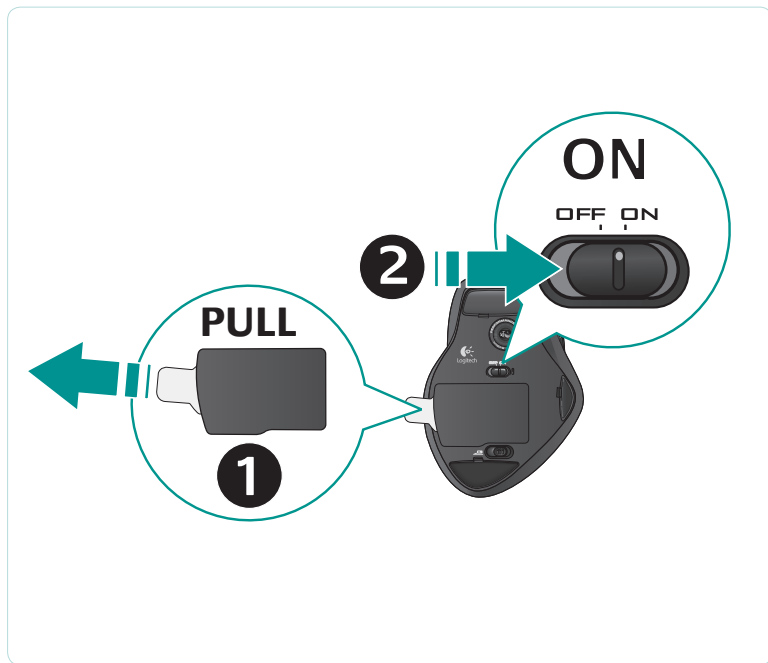
Thank you!

Thank you for purchasing the Logitech® Cordless Desktop® Wave Pro™. Please read this guide to get up and running quickly and to learn about your product. Should you have any questions, refer to the troubleshooting and support sections of this document for assistance.

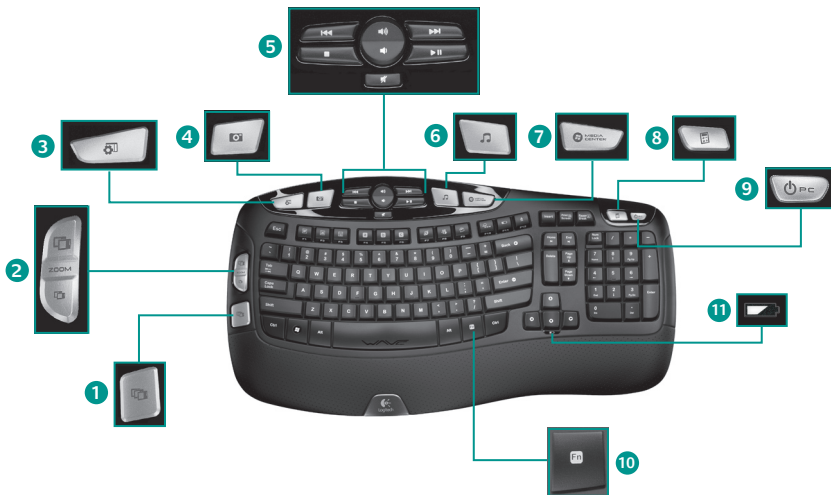










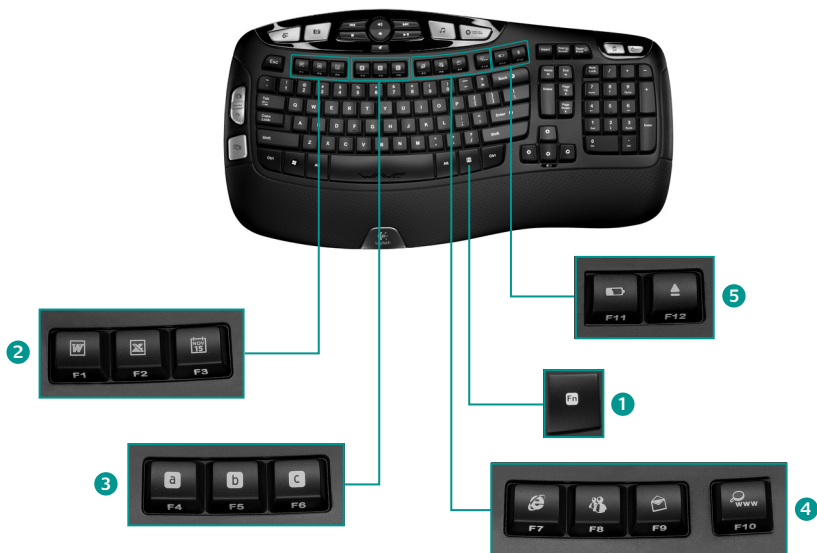


Keyboard features: hot keys

1. Windows Vista® Flip 3D
2. Zoom in/out documents and images or scroll windows and Flip 3D
3. Windows Vista® Gadget
4. Windows Vista® Photo Gallery
5. Multimedia navigation
6. Media player
7. Windows Media Center
8. Windows Calculator
9. PC sleep
10. **Fn** key (for use with F-keys)
11. Battery status indicator (**Fn** + **F11**)



*To enjoy **all** the features of your keyboard or to customize it to suit your needs, please install the Logitech® SetPoint™ Software that comes with your product.*



Keyboard features: F-keys

1. **Fn** key (for use with F-keys)

2. Productivity zone

Fn +**F1** Launches document application

Fn +**F2** Launches spreadsheet application

Fn +**F3** Launches calendar

3. Favorites zone

Fn +**F4** to **F6** program your favorite application, folder, or web site with a long, simultaneous press of **Fn** and the corresponding **F4**, **F5**, or **F6** key (just like the presets of a car radio).

4. Internet zone

Fn +**F7** Launches Internet browser

Fn +**F8** Launches instant message application

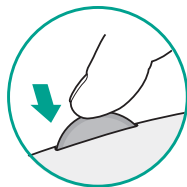
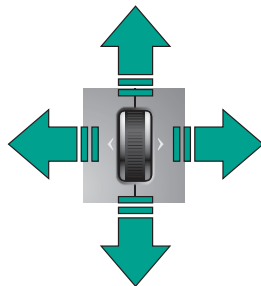
Fn +**F9** Launches e-mail application

Fn +**F10** Launches Internet search engine

5. Convenience zone

Fn +**F11** Battery status check

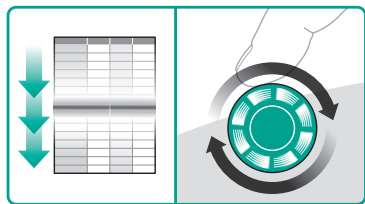
Fn +**F12** Opens/closes CD-DVD tray



Mouse features: scrolling

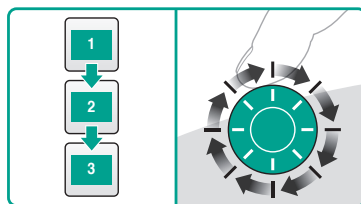
1. **MicroGear™ Precision scroll wheel.** Tilt wheel for side-to-side (horizontal) scrolling through spreadsheets or wide documents. The scroll wheel doubles as a middle button; press down to use and press again to release.
2. **Scroll toggle.** Press the Scroll Wheel Mode Shift button to toggle instantly between hyper-fast and click-to-click scrolling.

Hyper-fast scrolling



The wheel spins freely, allowing you to fly through long documents and Web pages.

Precision scrolling

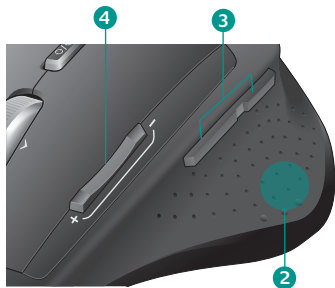


Use the ratcheted, click-to-click mode to navigate lists or slides.



Mouse features: buttons and applications

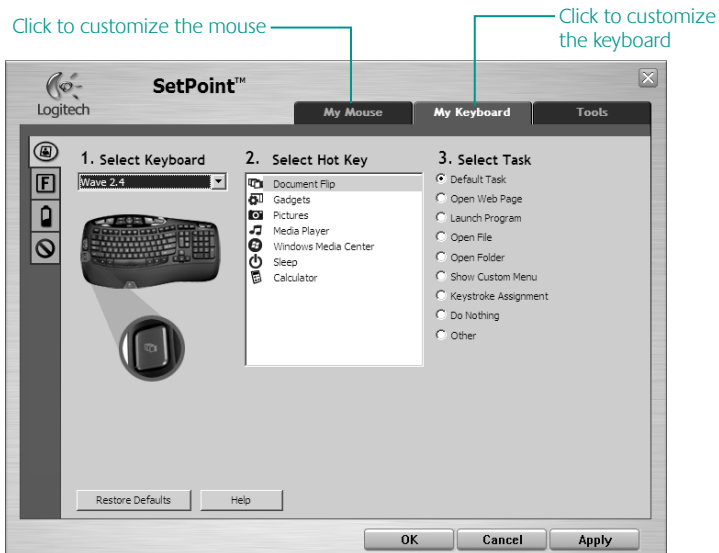
1. **Battery-indicator light.** Blinks red when recharging is required.
2. **Application switch.** Press stealth thumb button to
 - Launch **Flip 3D** (Windows Vista®) to show open windows in three dimensions so that you can cycle through them and select one to display its contents.
 - Or launch **Document Flip** (Windows® XP) to list currently opened windows so that you can switch to one in order to display its contents.
3. **Back and forward buttons.** Press to navigate back and forward through Web pages.
4. **Mouse sensitivity buttons.** Press the (-) or (+) button to toggle between two preset levels of pointer responsiveness—low and high. Use the software to define custom sensitivity levels.



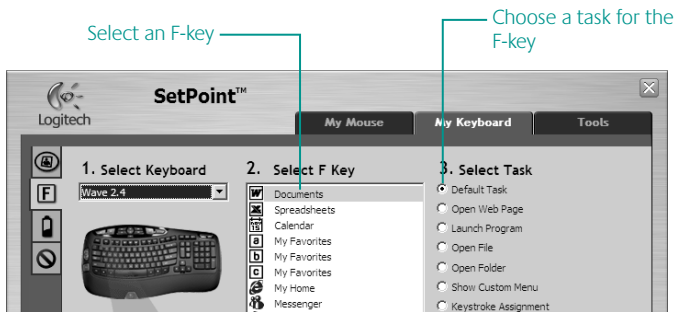
*To enjoy **all** the features of your mouse or to customize it to suit your needs, please install the Logitech SetPoint Software that comes with your product.*

Customizing the keyboard and mouse

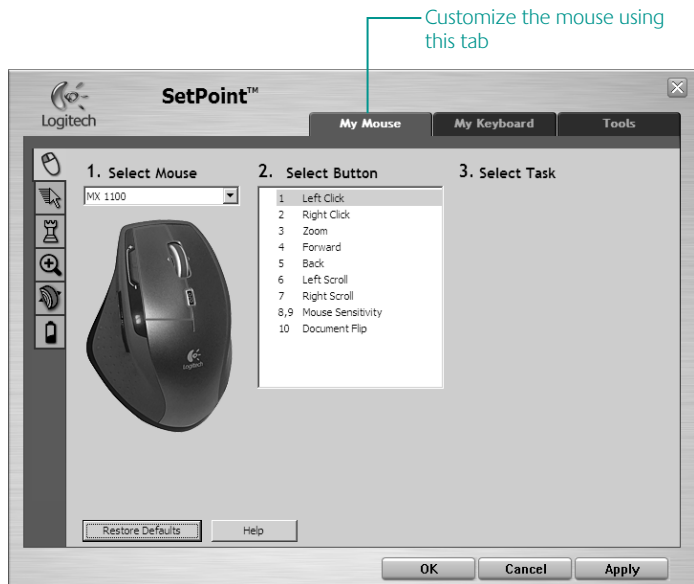
1. Double-click the **Mouse and Keyboard Settings** icon on the Windows® desktop to make changes.
2. To customize the keyboard, click the **My Keyboard** tab. For the mouse click the **My Mouse** tab.



- For either the keyboard or mouse, a series of tabs is shown on the left.
- Choose a tab, such as the keyboard **F-key Settings**. A picture of the keyboard is displayed showing F-keys (list 2) to which tasks can be assigned (list 3).
- In the **2. Select F-key** list, highlight the F-key to be reassigned a task.
- In the **3. Select Task** list, highlight the new task.
- When you are done, click **OK** to save the new F-key assignments.



Keyboard F-key Settings tab



My Mouse tab

For more information about customizing your keyboard and mouse, please refer to the help system.

Customizing the keyboard and mouse (cont.)

Use the same sequence of steps to specify changes on other keyboard and mouse tabs. For the keyboard, you can

- Specify settings for F-keys
- Specify settings for Hot keys
- Check battery level
- Disable keys you don't use often

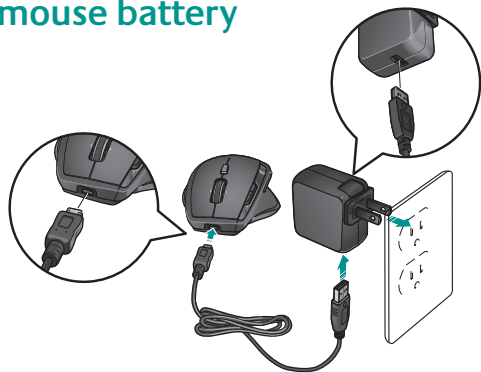
For the mouse, you can modify settings for

- button assignments
- mouse movement
- game setting parameters
- zooming
- scrolling

You can also check the battery level.

Recharging the NiMH mouse battery

- Start using your mouse immediately, right out of the box; there's no need to recharge the battery.
- Continue using your mouse while it recharges; there's no downtime.
- Recharge your mouse when the mouse battery-indicator light blinks red. (See diagram for cable connection.)



- Battery-indicator light blinks green while the battery recharges. The battery is fully recharged when the battery-indicator light turns solid green.
- A full charge (about 7 hours of charging time) provides about 6 weeks of battery power.
- Minimum charge (about 15 minutes) provides one day of battery power.
- Intelligent charging system allows for partial charging sessions without damaging the battery.
- Use only NiMH replacement batteries, size AA R6 with a minimum of 1800 mA.
- **Caution:** Risk of explosion if battery is replaced by an incorrect type. Use and replace only with the same type and rating as the battery provided. Charge only with a standard USB power outlet.

Troubleshooting

Keyboard and mouse are not working

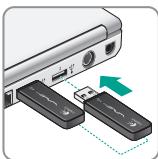


Keyboard



Mouse

Is the Power on? The power switch for each device must be in the **ON** position. Battery LED should light green.



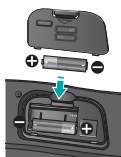
Check the USB port connection. Try changing ports. If you're using a desktop PC that has a USB port on the front, try using that port. Remove any metal object between the mini-receiver and the keyboard or mouse that may interfere with reception.



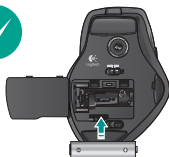
Move closer? Try moving the keyboard or mouse closer to the USB mini-receiver.



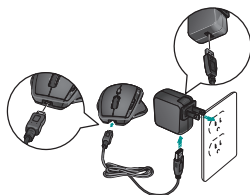
Are you experiencing slow or jerky cursor movement? Try the mouse on a different surface (e.g., deep, dark surfaces may affect how the cursor moves on the computer screen).



Keyboard



Mouse



How are the batteries? Check the battery installation in each device or replace the batteries as needed. The keyboard uses AA alkaline batteries, and the mouse uses a single AA R6 NiMH rechargeable battery (with a minimum of 1800 mA). **Do not use an alkaline battery in the mouse.** Try recharging the mouse battery using the AC adapter or by connecting the mouse directly to the computer USB port using the supplied USB cable.



You may need to re-establish a connection for each device:

- **First**, press the **Reset** button on the mini-receiver.
- **Second**, under the device, slide the **ON/OFF** button **OFF** and then **ON**.

Visit www.logitech.com/comfort for more information about using your product, and for ergonomics.



www.logitech.com/support



United States	+1 646-454-3200
---------------	-----------------

Argentina	+00800 555 3284
-----------	-----------------

Brasil	+0800 891 4173
--------	----------------

Canada	+1 416 207 2782
--------	-----------------

Chile	1230 020 5484
-------	---------------

Latin America	+55 11 3444 6761
---------------	------------------

Mexico	001 800 578 9619
--------	------------------



www.logitech.com

© 2008 Logitech. All rights reserved. Logitech, the Logitech logo, and other Logitech marks are owned by Logitech and may be registered. All other trademarks are the property of their respective owners. Logitech assumes no responsibility for any errors that may appear in this manual. Information contained herein is subject to change without notice.

620-001229.002

Free Manuals Download Website

<http://myh66.com>

<http://usermanuals.us>

<http://www.somanuals.com>

<http://www.4manuals.cc>

<http://www.manual-lib.com>

<http://www.404manual.com>

<http://www.luxmanual.com>

<http://aubethermostatmanual.com>

Golf course search by state

<http://golfingnear.com>

Email search by domain

<http://emailbydomain.com>

Auto manuals search

<http://auto.somanuals.com>

TV manuals search

<http://tv.somanuals.com>