

2.4GHz Stereo

**wireless**  
**HEADPHONES**  
**DIGITAL**

**2.4GHz Digital Stereo  
Wireless Headphone System**

With 16 Band FSK Transmission

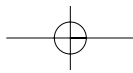


LTB wants to thank you for choosing the Concert Series Wireless Headphones.

Before attempting to use your Wireless Headphones, please remove all parts from the box and read the installation and use instructions carefully

Limited 1 Year Warranty

LTB-WR-ST



## INTRODUCTION

This 2.4 GHz stereo wireless headphone system features a compact design that uses the latest wireless technology that enables you to enjoy music and TV sound anywhere inside or outside your home. You can simply connect the system to any sound source, such as a DVD, DBS, CD, TV, VCR, stereo receiver and radio.

## FEATURES

One touch Channel Selection

2.4 GHz RF technology lets you roam freely throughout your house

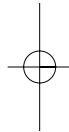
Operating distance up to 100 Meters

No line-of-sight limitation

Rechargeable headphone receiver

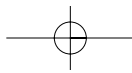
Built-in charger in the transmitter

Automatic level control (ALC) and Auto ON/OFF design



## HEADSET SAFETY

- Do not play your headset at a high volume. Hearing experts advise against continuous extended play.
- If you experience a ringing in your ears, reduce the volume or discontinue use.
- Make sure the volume level of the headphone is set at a comfortable listening level before placing it in position over your ears.

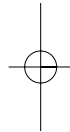


## WR-ST SPECIFICATIONS

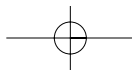
|                     |   |
|---------------------|---|
| Transmission Mode   | : Operating at 2.4GHz ISM band<br>with 8 selectable channels                            |
| Carrier Frequency   | : 2410, 2419 ~ 2473 MHz   |
| Operation Voltage   | : Transmitter, 3.6 ~ 5VDC<br>: Receiver, 3.9 ~ 5VDC<br>(2 x AAA rechargeable batteries) |
| Frequency Response  | : 20 ~ 20 KHz, -1dB   |
| Frequency stability | : ±100 KHz  |
| S/N ratio           | : 87dB (Typical)  |
| Separation          | : 80dB (Typical)  |
| Operation distance  | : 30 Meters   |

FCC operation is subject to the following two conditions: (1) this device may not cause interference; and (2) this device must accept any interference, including interference that may cause undesirable operation of the device.

Changes or modifications not expressly approved by the party responsible for compliance to the FCC rules could void the user /s authority to operate this equipment.



Warning: Changes or modifications to this unit not expressly approved by the party responsible for compliance could void the user /s authority to operate the equipment.



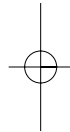
## TROUBLESHOOTING YOUR SYSTEM

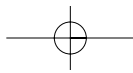
**NO SOUND** - Make sure the AC adapter is fully inserted into the AC outlet and into the DC Power Jack input on the transmitter.

- Make sure the headphone ON/OFF switch is in the ON position Indicated by a red LED light.
- Headphone battery may be too weak. Charge battery. Charge the new batteries for 8 hours prior to the first use.
- Make sure the TV, stereo receiver or audio component is ON and tuned to a channel with audio.
- Adjust the volume control on the headphone to increase the volume.
- The connected audio/video equipment is not playing. Turn on the equipment.
- The volume of the headphones is turned down. Adjust the volume to an appropriate level.

**NO SIGNAL** - Make sure the power indicator on the base unit is on. Make sure the power indicator on the headset is on.

- Change the CH-SEL button on the base and the CH-SEL on the headset to a matching frequency band (when you can hear audio)
- Headphone batteries may be too weak. Charge the included NiMh rechargeable AAA batteries or replace them with new ones.
- The headphone is too far from transmitter (over 30 Meters). Move closer
- The input level of the audio signal is too low. Turn up the volume of the audio source equipment.

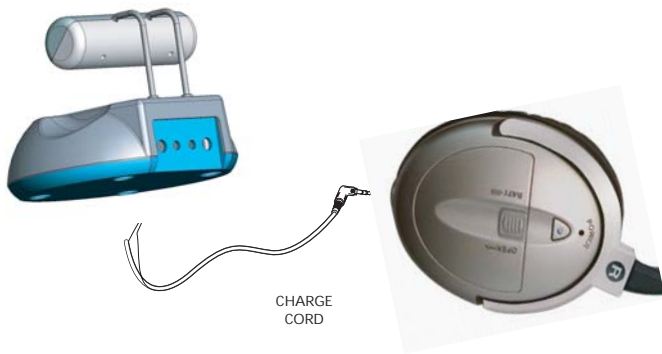




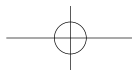
## CHARGING THE BATERIES

1. Switch the ON/OFF button on the headphone receiver OFF .
2. Plug the charge cord into the charge input jack of the headphone receiver to charge the batteries.
3. The charging process starts automatically when the batteries are charged and the charging RED LED lights up. Charge the new batteries for 24 hours prior to the first use of the headphone system.

Caution : Do not use other types of batteries to replace the rechargeable (AAA) battery. When you are not using the headphone receiver, please switch it to OFF to avoid damage to the batteries.



The battery pack must be fully charged prior to operation. An initial charge of 24 hours is required to ensure the extended life of the rechargeable batteries. Be sure the headphone receiver is in the OFF position during charge status.



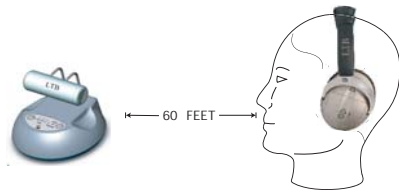
## NOTE

You should now be able to walk freely from room to room enjoying full stereo sound. If you notice interference (noisy signal or if the sound is distorted or breaks up), adjust the frequency by pressing CH-SEL on the top of the transmitter base and then select CH-SEL on the headset. This should help you to obtain better reception with the headphones.

You may have to try this adjustment several times to obtain optimum performance, depending on the conditions. Please refer to the following drawings A and B for best tuning:

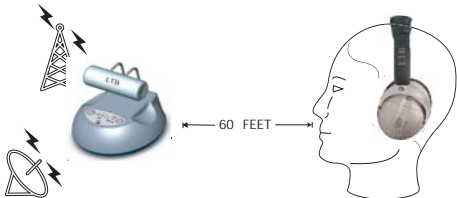
### A

Keep a distance of about 60 feet between the headphone and the transmitter when adjusting the tuning knob for best stereo reception.

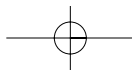


### B

Whenever you find interference, readjust the frequency of the transmitter by pressing CH-SEL on the transmitter and the CH-SEL on the headphone to lock in a new frequency.



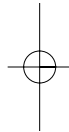
For protection of the transmitter and to save power, the transmitter will cut off automatically after about one minute when the input signal from an audio source is too weak for operation. If the signal from the audio source returns at a sufficient level, the transmitter will turn on again automatically.



## HEADPHONE RECEIVER

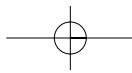
1. Open the battery compartment cover on the right side of the headphone receiver.
2. Insert two AAA size rechargeable batteries, noting the correct polarity as indicated in the battery compartment.
3. Replace the cover by sliding it in place until it snaps into position.
4. The batteries must now be charged before you use the headphones. Refer to the instructions on page 6 Charging the Batteries for details.

The headphone may be operated by using standard or alkaline batteries. However, these may not be recharged in the headphone. Standard zinc carbon, manganese or alkaline batteries may leak or explode if recharged in the headphone, thereby voiding the warranty. **Do not attempt to recharge any batteries in the headphone other than nickel cadmium type cells that were included with your unit.**



## OPERATION

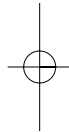
1. Turn on the audio source (TV or audio component) to which the transmitter is connected.
2. Slide the ON/OFF switch on the headphone to ON.
3. Listen to the volume coming from the ear cups on the headphone to make certain that the volume is not too loud before placing the unit on your head. (See the section titled Headset Safety on page 1.) Adjust the volume as needed using the VOLUME CONTROL wheel located on the left ear cup. Once the volume level is at a comfortable setting, place the headphones over your ears and adjust the volume as desired.
4. If the best frequency reception is not found, press the Auto Scan button on the headphone to locate the frequency of the transmitter for the best reception. The stereo LED indicator will light up.



## INSTALLATION

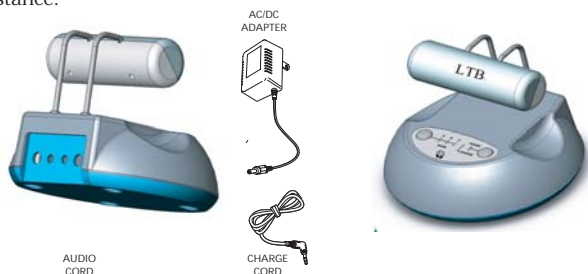
### TRANSMITTER

1. Remove the Transmitter from the packaging.
2. Plug the AC power adapter into the DC jack located on the rear of the transmitter.
3. Connect the AC power adapter to an electrical wall outlet.
4. The audio cord on the rear of the transmitter can be connected to the audio output jack (R & L) of the TV, stereo receiver, VCR, DVD or radio.  
Use a Y Splitter for R & L type RCA connections.
5. Turn on the component device.

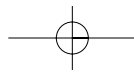


Note that when the audio device is on, the green SIGNAL INDICATOR LED light will glow (green). This indicates that the transmitter is receiving an adequate audio signal. If the LED is not on, you must increase the volume until the green LED is lit. If you increase the volume and the LED still does not illuminate, then check all your connections and make sure that the power is on for both the device and the transmitter. Refer to the section titled

Troubleshooting located on page 8 of this instruction book for assistance.







## 2,4GHZ TRANSMITTER

FRONT



FREQUENCY ADJUST

CHARGE INDICATOR (GREEN)

POWER ON/SIGNAL INDICATOR (RED)

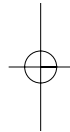
BACK



CHARGE CORD

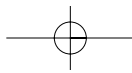
AUDIO CORD

DC POWER JACK



## 2.4GHZ HEADPHONE RECEIVER

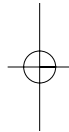




## LTB LIMITED 1 YEAR WARRANTY

LTB Audio Systems, Inc. warrants that for 1 year from the date of original purchase, it will replace this product if found to be defective in materials or workmanship. Return it postage prepaid to the Product Exchange Center address for prompt, no charge replacement with a current equivalent. This replacement is LTB Audio Systems, Inc. sole obligation under this warranty. LTB Audio Systems, Inc. will not be responsible for any incidental or consequential damages, or for any loss arising in connection with the use or inability to use this product.

Some states do not allow the exclusion or limitation of incidental or consequential damages, so the above limitation or exclusion may not apply to you. This warranty excludes defects or damage due to misuse, abuse, or neglect. This warranty gives you specific legal rights, and you may also have other rights, which vary from state to state.



© 2005 LTB Audio Systems, Inc.  
Product Service Center  
375 North Street, Unit N  
Teterboro, NJ 07608  
LTB-WR-ST Rev0927  
Trademark(s) Registered  
Marca(s) Registrada(s)  
[www.ltbaudio.com](http://www.ltbaudio.com)  
Manufactured In China

## Free Manuals Download Website

<http://myh66.com>

<http://usermanuals.us>

<http://www.somanuals.com>

<http://www.4manuals.cc>

<http://www.manual-lib.com>

<http://www.404manual.com>

<http://www.luxmanual.com>

<http://aubethermostatmanual.com>

Golf course search by state

<http://golfingnear.com>

Email search by domain

<http://emailbydomain.com>

Auto manuals search

<http://auto.somanuals.com>

TV manuals search

<http://tv.somanuals.com>