

USB Pro 5.1

SURROUND SOUND HEADPHONE SYSTEM

USER MANUAL

LTBTM

The Power of sound

www.listentobelieve.com



User Manual

Trademarks

C-Media, C-Media logo are trademarks of C-Media Electronics Inc. EAX trademarks of Creative Technology Ltd. Microsoft, DirectSound3D, Windows are trademarks of Microsoft Corporation. DOLBY, Dolby Digital are trademarks of Dolby Laboratories, Inc. Other company and product names may be trademarks of the respective companies with which they are associated.

License

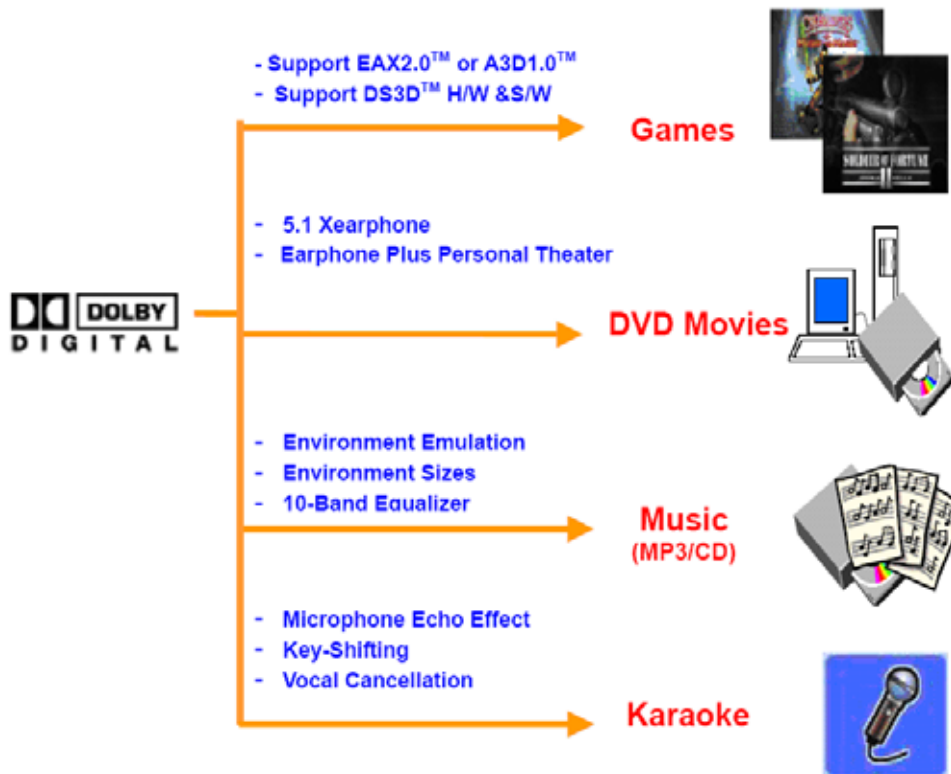
Dolby Digital driver is manufactured under license from Dolby Laboratories.

Table of Content

1. Introduction USB Multi Channel Technology	3
2. Function, Structure and Overview	4
3. Advantages of USB Sound Solution	5
4. System Requirement and Installation	7
5. User Interface and Function Control	13
6. Special Buttons Function	20

1. Introduction Multi Channel Sound Technology

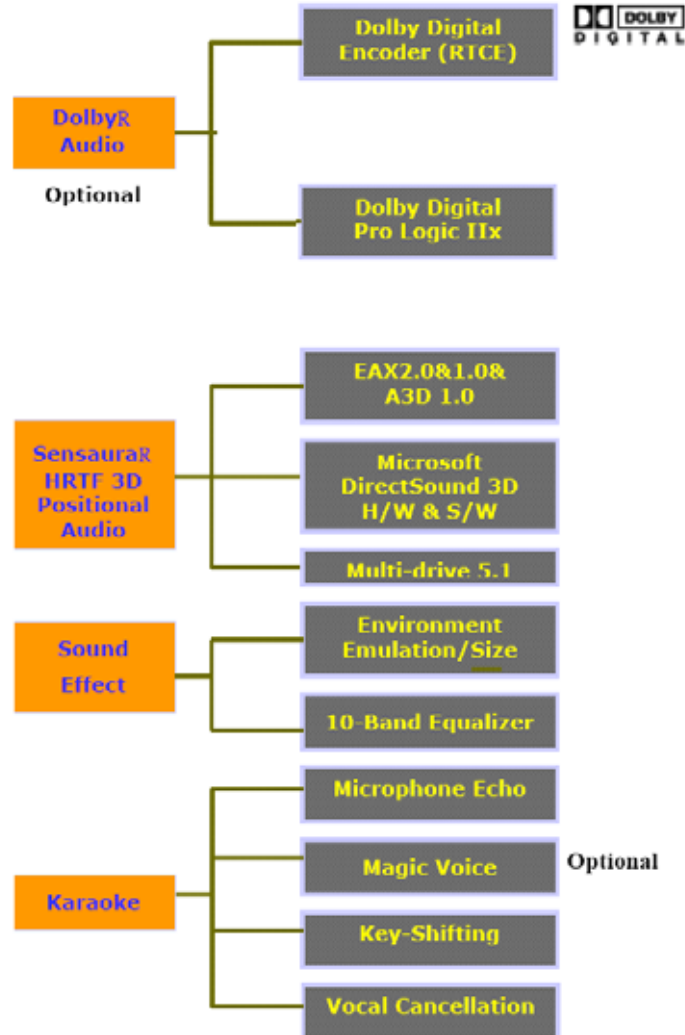
Thanks for choosing our USB Multi Channel audio solution! The user manual is a guide for users to understand how to use this new generation USB Digital Audio technology. USB Multi Channel provides a value-added PC audio total solution and integrated advance Dolby Digital sound technology. All kinds of audio applications can get maximum support. With this manual, users can quickly take advantage of these great features to enjoy amazing sound effects even better than most consumer electronics devices. Better yet, all audio formats can be converted to thrilling 3-dimensional audio by this technology. Personalized and optimum 5.1Ch listening environment and experience is thus achieved.



USB Multi Channel Sound Features for All Applications

2. Function Structure and Overview

The following shows the function overview of the driver. Optional features mean optional offers decided by system manufactures.



USB Multi Channel Driver Function Diagram

3. Advantages of USB Sound Solution

The 1st Advantage of USB Multi Channel Sound Technology: USB Multi-Channel Audio

SPEAKER SHIFTER allows the users to obtain a 5.1CH Headphone environment no matter what output device they are using (2CH speakers). Moreover, enhanced individual channel output is feasible. This revolutionary technology is welcomed by those who complain about the "not-loud-enough" volume of the center (for dialog) or bass output in DVD no more low-volume center and/or bass output problems.

The 2nd Advantages of USB Multi Channel Sound Technology: Environment FX™ and 3D Positional Audio

In the real world sounds travel directionally; furthermore, sounds would have varied manifestations according to different factors of the environment: the room size, distance, reflecting materials, obstructing objects, etc. For example, same footsteps in different settings, say the cave and the sewer pipe, will generate distinctive effects to the ears. In that regard, besides eye perception, sound cues also play an important role in helping people tell the changes of the surroundings.

The 3rd Advantages of USB Multi Channel Sound Technology: Karaoke Functions

This function includes microphone echo, magic voice, key shifting and vocal canceling. General microphone control cannot change a user's voice but by way of microphone echo, any one can get a unique voice. Moreover, you can use key shifting to adjusting any music and melody to harmize with your tune. Better yet, vocal canceling can eliminating singer's voice and make the song become background music for your singing. Furthermore, magic voice will not only can provide interesting effects, but also can use on Internet voice communication to keep yourself anonymous.

Especially for applications with ICQ, MSN message, Yahoo message, VOIP phone and on line games.

**The 4th Advantages of USB Multi Channel Sound Technology:
Dolby Digital DSP Solution Integrated (Optional)**

USB Multi Channel is the world first PC audio technology that can integrate whole Dolby Digital DSP technology in a software module. This special feature include 1] x , , and RTCE (Real-Time Content Encoder) function modules.

4. System Requirement and Installation

This device must be used with USB specific PC products. And the user should confirm that PC operation supports USB function, USB 1.1 or 2.0.

Case1--No external driver installed :

- OS Support : Win98SE, WinME, Win2000, WinXP, Mac OS 9.0 and 10.x
- System recommended : use Intel Pentium III 或 AMD K6 500 CPU above
- At least 64 MB RAM (Win98SE) or 128MB RAM (WinME, Win2000 and WinXP)
- At least 50 MB hard disk space
- For good sound quality, please adjust your system's H/W acceleration and Sample rate conversion quality to Full and Best.



Note:

Sometime, when user plug USB Personal Multi-media Device on PC system and OS cannot auto change audio device to USB audio, please switch the audio device to USB audio sound and audio devices properties in control panel.



Case2--Install USB Multi Channel Dolby Digital sound technology driver :

- OS Support : Win98SE, WinME, Win2000, WinXP
- System recommended : use Intel P4 1GHz or AMD K7 above
- At least 64 MB RAM (Win98SE) or 128MB RAM (WinME, Win2000 and WinXP)
- At least 80 MB hard disk space
- Support direct sound 3D

Note : Windows OS has default USB driver support, but no support for HRTF 3D, EAX , Multi-channel sound effect and Dolby Digital sound DSP function. Thus, if user wants to enjoy these experiences must install USB Multi Channel sound audio driver.

Before users install USB Multi Channel sound audio driver, they must make sure that USB Multi-media Sound Device has been connected to PC system already.

If your PC system has more than one USB port, please remember which one is connected for install, and next time when you plug the USB Multi-media Sound Device to PC, you have to plug in the same port to initialize the USB Multi Channel driver.

Case3--Install USB Multi Channel technology driver :

- OS Support : Win98SE, WinME, Win2000, WinXP
- System recommended : use Intel Pentium III 或 AMD K6 500 CPU above
- At least 64 MB RAM (Win98SE) or 128MB RAM (WinME, Win2000 and WinXP)
- At least 50 MB hard disk space
- Support direct sound 3D

Note : Windows OS has default USB driver support, but no support for HRTF 3D, EAX , Multi-channel sound effect and Dolby Digital sound DSP function. Thus, if user wants to enjoy these fancy experiences must install USB Multi Channel sound audio driver.

Before users install USB Multi Channel sound audio driver, make sure that USB Multi-media Sound Device is connected to PC system already.

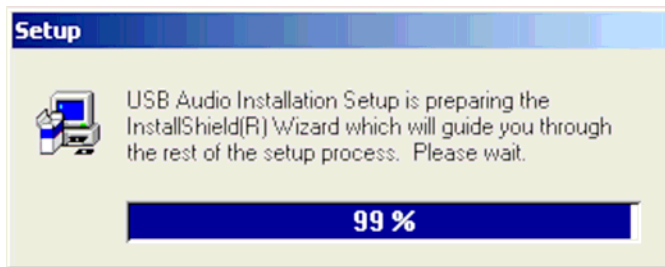
If your PC system has more than one USB port, please remember which one is connected for install, and next time when you plug this USB Multi-media Sound Device to PC, you have to plug in the same port to initialize the USB Multi Channel driver.

USB Multi Channel Sound Audio Driver Installation Step :

1. Turn on PC system and connect USB Multi Channel Sound Device to PC system.



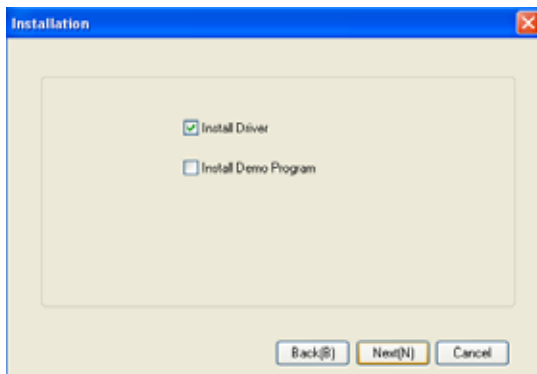
2. Insert Installation CD on your CD-ROM or DVD ROM, the program will pop up auto run information.



3. Please follow up the set up procedure and click “Next” button to continue installation.



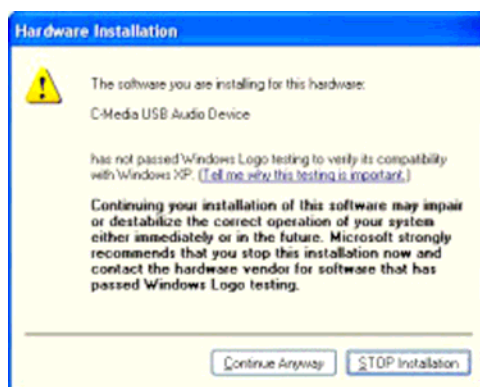
4. You can Select install driver only click “Next” to continue installation.



5. Set up will install USB audio kit to default path and folder.



6. If your System is WinXP, you may see a dialog box asking you about windows logo issue, please click “Continue Anyway” to complete installation. And set up program will continue install.



7. While program is running to install driver it's may take a little time.



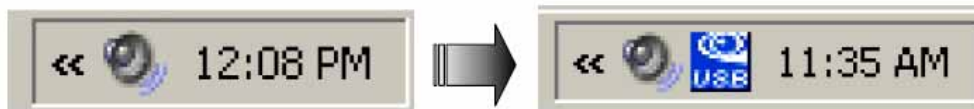
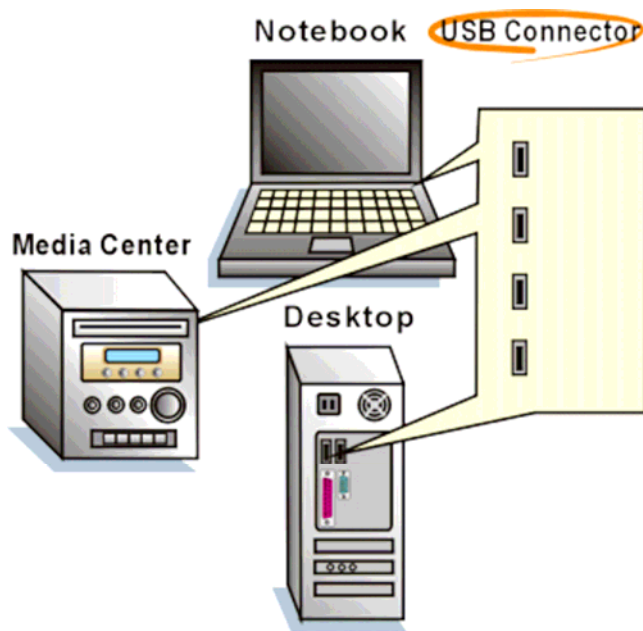
8. When set up program completes installation the system will need to restart to initialize the driver.



9. After reboot and system is up and running again, you can see a small icon on right lower tray. You can click it to open USB Multi Channel Sound driver functions for more control.



10. If your PC system has more than one USB port, you can just plug the USB Personal Multi-media Device to any USB port. If this port is correct the driver will detect the device and show a task bar on the bottom right side of the screen to telling you which port is correct.



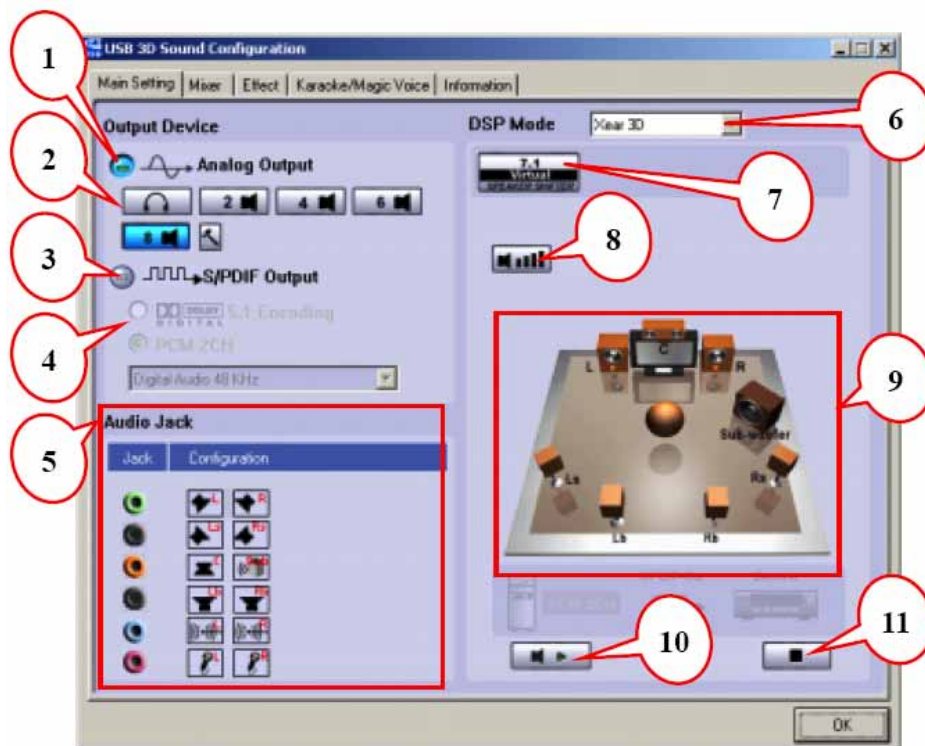
When this USB Multi Channel sound icon was showing, it's mean USB Multi Channel sound driver is initialized and working. If you have more than one USB port was and you forgot which one was installed with the USB Multi Channel sound driver, this icon will indicate you are connecting to the right port.

5. User Interface and Function Control

Main Setting

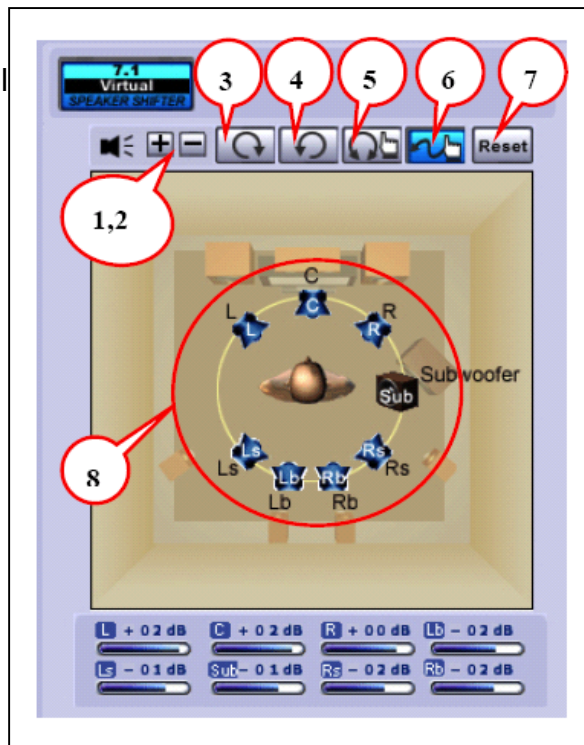
Using Analog Output or Digital S/PDIF-Out

1. Analog Output : turn on this button then can select analog output channels mode.
2. Analog Output channels Mode : Earphone, 2CH, 4CH, 6Ch and 8CH for selected.
3. Digital Output : turn on this button then can select SPDIF Out data format.
4. Digital Output Mode : Dolby RTCE, PCM for selected.
5. Audio Jack Connected Display
6. DSP Mode : pull down to select different DSP Mode. (Default support Xear 3D)
7. Virtual SPEAKER SHIFTER : can open SPEAKER SHIFTER windows for control. (For detail information see the next page)
8. Digital Volume Control : can open each channel to adjust digital volume. (For detail information see the next page)
9. Channel Display & Speaker Test : can show analog output channel status and directly click speaker graphics will perform sound testing.
10. Auto Sound Test : can auto test every channel sound effect.
11. Stop Auto Sound Test : can stop auto testing.



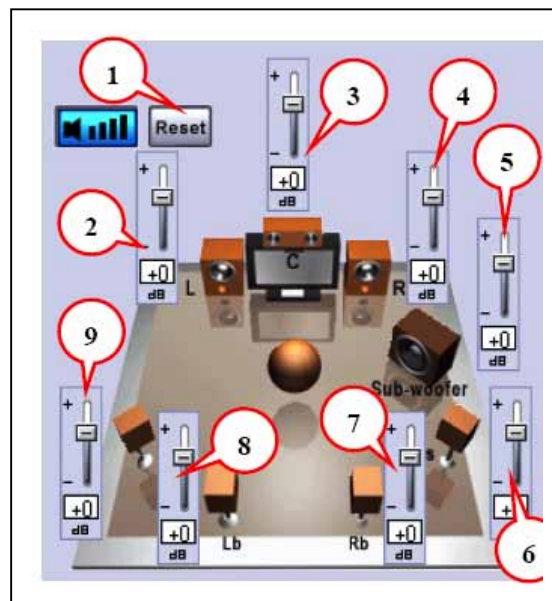
Virtual SPEAKER SHIFTER

1. Total Volume Up Control
2. Total Volume Down Control
3. Clockwise
4. Counter Clockwise
5. Manual Rotation
6. Manual Shifter
7. Reset
8. Shifter Drag



Digital Volume Control

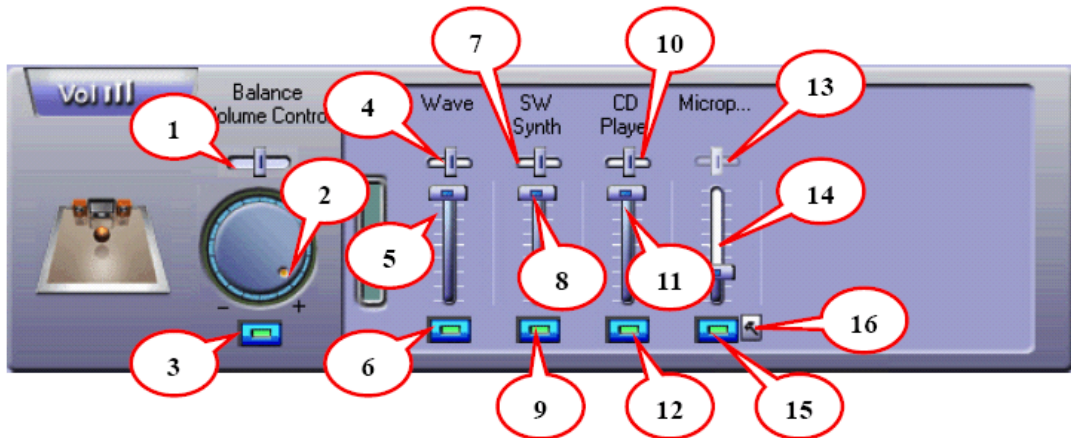
1. Reset Volume
2. Left Channel Control
3. Center Channel Control
4. Right Channel Control
5. Subwoofer Channel Control
6. Rear Right Channel Control
7. Right Back Channel Control
8. Left Back Channel Control
9. Rear Left Channel Control



Mixer

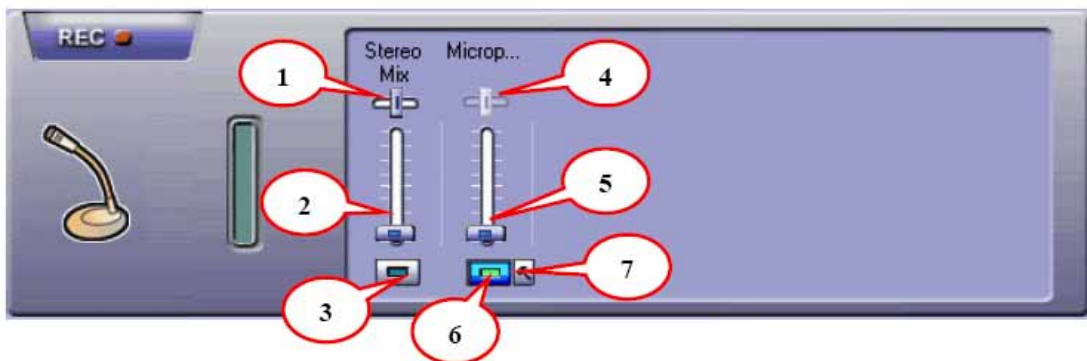
Playback Volume Control

1. Balance Control	9. SW Synth Volume On/Off
2. Volume Up/Down Control	10. CD Volume Balance
3. Master Volume On/Off	11. CD Volume Control
4. Wave Volume Balance	12. CD Volume On/Off
5. Wave Volume Control	13. Microphone Balance
6. Wave Volume On/Off	14. Microphone Control
7. SW Synth Volume Balance	15. Microphone On/Off
8. SW Synth Volume Control	16. Microphone Advanced Setting



Recording Volume Control

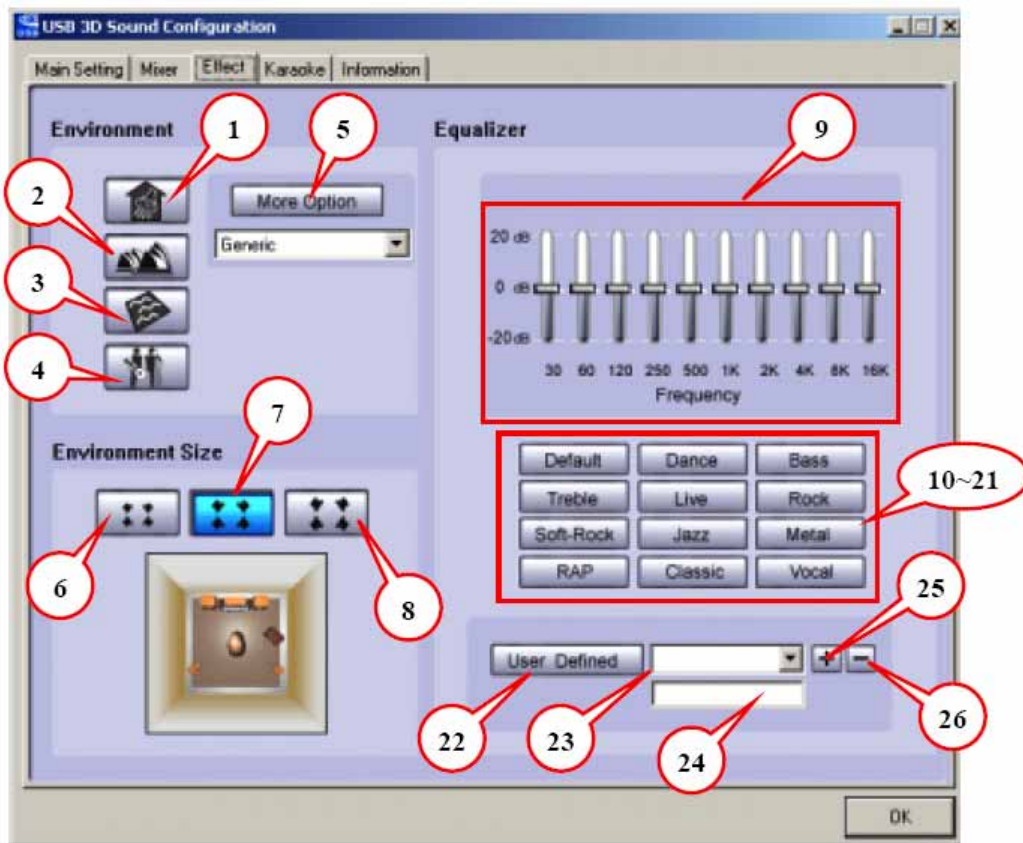
1. Stereo Mixer Balance Control
2. Stereo Mixer
3. Stereo Mixer
4. Microphone Record Balance
5. Microphone Record Volume Control
6. Microphone Record Volume On/Off
7. Microphone Record Advanced Setting



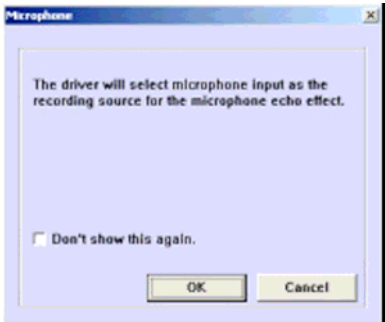

Effects

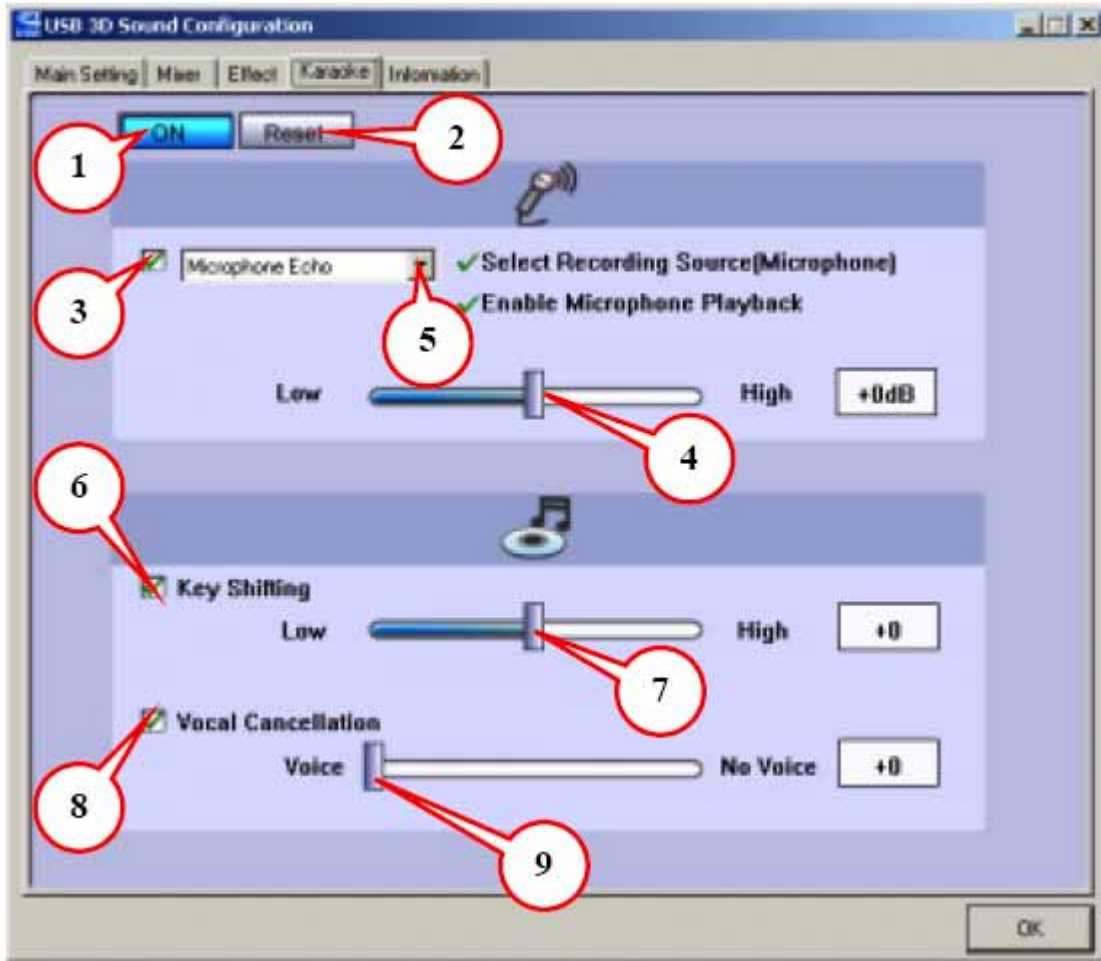
Environment	Environment Size
1. Bathroom	6.Large
2. Opera	7.Middle
3. Underwater	8.Small
4. Music Pub	
5. More option : 27 mode for selected	

Equalizer	
9. Ten Band Equalizer Adjust	18. Pre-Set Mode (Metal)
10. Pre-Set Mode (Default)	19. Pre-Set Mode (RAP)
11. Pre-Set Mode (Dance)	20. Pre-Set Mode (Classic)
12. Pre-Set Mode (Bass)	21. Pre-Set Mode (Vocal)
13. Pre-Set Mode (Treble)	22. Equalizer User Define On/Off
14. Pre-Set Mode (Live)	23. Pull to select user define mode
15. Pre-Set Mode (Rock)	24. User Define naming key in
16. Pre-Set Mode (Soft-Rock)	25. Add new user define mode
17. Pre-Set Mode (Jazz)	26. Del user define mode



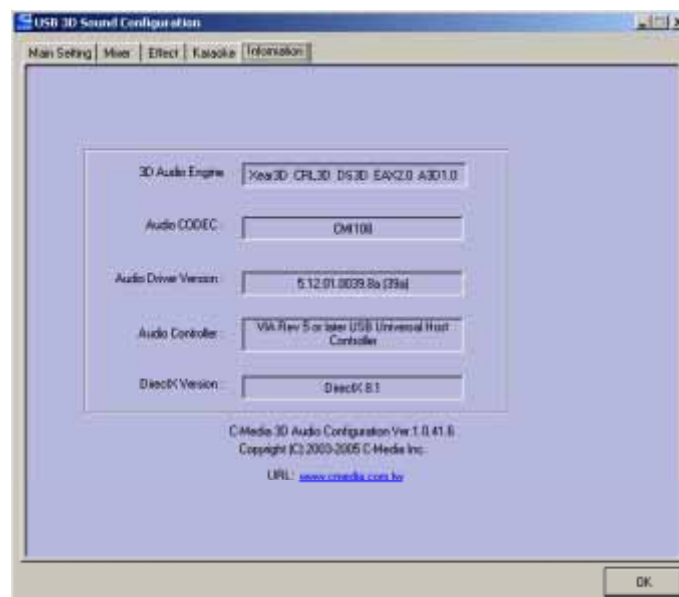
Karaoke

1.Karaoke On/Off	Click this button then can control all karaoke functions
2.Karaoke Setting Reset	Can reset all setting to default value
3.Start Microphone Echo Function	<p>Select this button will pop up a dialog box to enable microphone function.</p>  <p>Click "OK" button to select recording source and enable microphone</p>
4.Echo Low/High Control Bar	Adjust echo low/high
5.Magic Voice Function (Optional)	<p>This function only supported in multi-channel audio products.</p>  <p>When you enable microphone echo then can pull down the menu to select magic voice. Magic voice provides 5 different effects for choice.</p>
6.Start Key Shifting Function	Select this button to enable key shifting function and control.
7.Key Shifting Low/High Control Bar	This function can adjust tune of background music to fit your singing.
8.Start Vocal Cancellation Function	Select this button to enable vocal cancellation function and control.
9.Vocal Canceling Control Bar	This function can control singer's vocal of background music and cancel it as possible.



Information

This page shows all of the USB Audio USB audio product and system information.



6. Special Buttons Function (Optional)

HID Function Button

USB Audio provided 2 special digital control buttons for user control from external device without mouse click. These buttons can let user directly control volume up/volume down. User can easily control volume promptly without operating mouse and GUI.

1. Volume Up : Pressing button can directly synchronizing control host side mixer to increase volume.

2. Volume Down : Pressing button can directly synchronizing control host side mixer to decrease volume.

Free Manuals Download Website

<http://myh66.com>

<http://usermanuals.us>

<http://www.somanuals.com>

<http://www.4manuals.cc>

<http://www.manual-lib.com>

<http://www.404manual.com>

<http://www.luxmanual.com>

<http://aubethermostatmanual.com>

Golf course search by state

<http://golfingnear.com>

Email search by domain

<http://emailbydomain.com>

Auto manuals search

<http://auto.somanuals.com>

TV manuals search

<http://tv.somanuals.com>