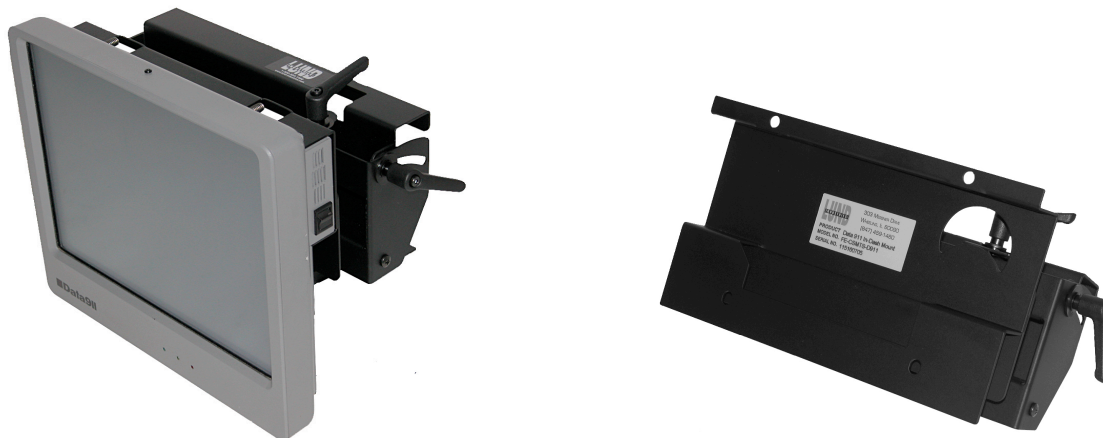




303 MESSNER DR. • WHEELING, IL • 60090
 847-459-1460 • FAX 847-459-1569
 WWW.LUND-INDUSTRIES.COM



FE-CSMFS Ford Escape In-Dash Mount Installation Instructions

Lund Industries, Inc is pleased to announce its multi-platform in-dash mount for 2003-2006 Ford Escape. The FE-CSMFS easily mounts in place of the factory AM-FM radio and allows Datalux TX-200, Data911, Fujitsu "T" Series, Kontron, Motorola MW-800 & 520, Palomar, Panasonic PDRC, Xplore iX104 & GII, and other displays to be mounted on the dash, enabling easy access to touch screens and other functions. The unit tilts 25° and swivels 12° for ease of viewing under high ambient light conditions. The FE-RRL Radio Relocator Bracket repositions the factory radio under the dash.

Installation Instructions

1. Remove the factory radio.
2. Remove the glove box door.
3. Route radio cables down to the glove box.
4. Install radio relocate bracket in glove box. Secure bracket with (4) screws.
5. Plug in radio connectors & snap radio into bracket
6. Install (2) "U" clips into radio slot and secure by tightening bolts provided. "U" clips attach to the black plastic around radio opening. Make bolts secure but **do not over-tighten** as plastic could crack.

Note: Separating the face plate from the mounting bracket will make monitor installation easier.

7. Mount monitor to face panel securely.
8. The plastic handles on the side of the mount allow the display to tilt up and down and swivel left and right for best viewing.

Free Manuals Download Website

<http://myh66.com>

<http://usermanuals.us>

<http://www.somanuals.com>

<http://www.4manuals.cc>

<http://www.manual-lib.com>

<http://www.404manual.com>

<http://www.luxmanual.com>

<http://aubethermostatmanual.com>

Golf course search by state

<http://golfingnear.com>

Email search by domain

<http://emailbydomain.com>

Auto manuals search

<http://auto.somanuals.com>

TV manuals search

<http://tv.somanuals.com>