

## Lynx™ Mold-Closed Limit Switch L-LS

The Lynx™ L-LS Mold-Closed Limit Switch is a tie-bar or machine mountable machine cycle input module designed to be used with the eDART System™.

The L-LS switch can be used to easily get a machine trigger off of most injection molding machines by following the installation steps below.

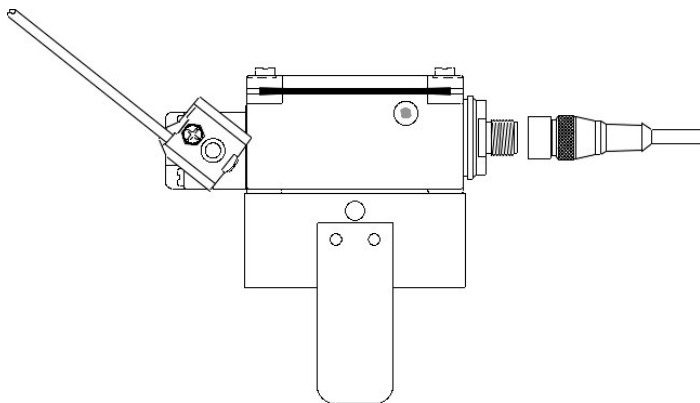


Figure 25: Lynx™ Mold-Closed Limit Switch side view

### L-LS Installation

#### Step 1.

Switch the molding machine to Manual mode and close the mold.

#### Step 2.

Set the limit switch on the tie-bar as shown in figures 26 and 27.



**Always power down before working on any equipment.**



**Be careful to note the position of the ejector plate, the mold, the limit switch and its cable, so the limit switch and/or its cable does not get caught as the mold opens and closes.**

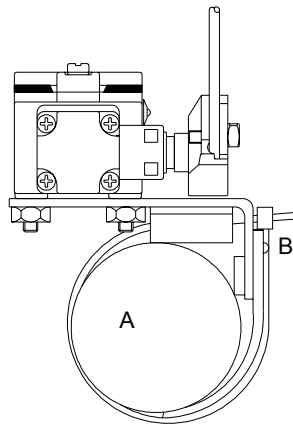



Figure 26: Lynx™ Mold-Closed Limit Switch front view

<b>A</b>	Tie Bar
<b>B</b>	Ty-Wrap

Table 25: Figure Labels



**Always disconnect the power before working on this or any electrical equipment.**

### Step 3.

Slide the limit switch to the left until an audible click is heard from the switch. See Figure 27.

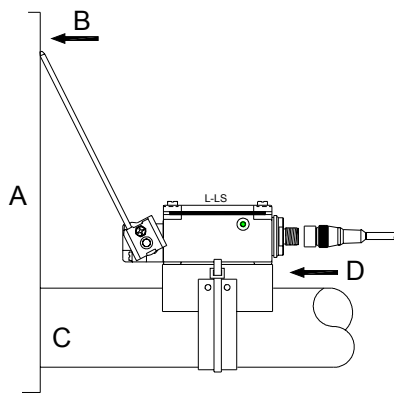


Figure 27: Lynx™ Mold-Closed Limit Switch side view

<b>A</b>	Moving Half
<b>B</b>	Ejector Plate
<b>C</b>	Tie Bar
<b>D</b>	Slide

### Step 4.

Hold the limit switch in place and use a ty-wrap to tighten it down to the tie-bar. See figure 29.  
More than one ty-wrap can be tied together if the tie-bar is large.

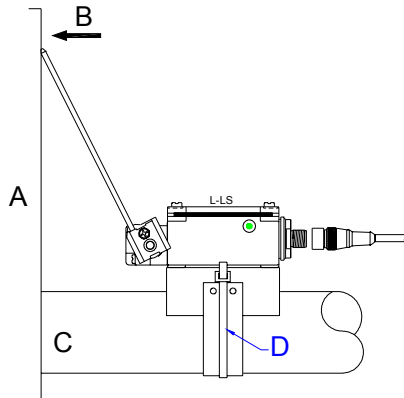


Figure 29: Lynx™ Mold-Closed Limit Switch L-LS side view



**Always power down before working on any equipment.**

<b>A</b>	Moving Half
<b>B</b>	Ejector Plate
<b>C</b>	Tie Bar
<b>D</b>	Tighten Ty-Wrap

Table 26: Figure Labels

### Step 5.

Plug a Lynx™ cable between the limit switch and the eDART System™.

### Step 6.

Run the machine to ensure proper use, while monitoring the eDART™ software.

## Free Manuals Download Website

<http://myh66.com>

<http://usermanuals.us>

<http://www.somanuals.com>

<http://www.4manuals.cc>

<http://www.manual-lib.com>

<http://www.404manual.com>

<http://www.luxmanual.com>

<http://aubethermostatmanual.com>

Golf course search by state

<http://golfingnear.com>

Email search by domain

<http://emailbydomain.com>

Auto manuals search

<http://auto.somanuals.com>

TV manuals search

<http://tv.somanuals.com>