

## TRANSIT USB™



## Contents

Introduction	4
What's in the Box?	4
Transit USB Specifications	4
Transit USB Features	6
Software Installation	7
Windows XP	7
Windows 2000	10
Windows Me	13
Windows 98SE	16
Mac OS 9.2.2	20
Mac OS X	21
Transit USB Audio Connections	23
Output Connections	23
Input Connections	24
Transit USB's Control Panel	24
Operating Mode	25
Latency	25
Transit USB and the Windows Media Drivers	26
WDM/MME	26
ASIO	26
Transit USB and Macintosh Audio	26
Mac OS 9.2.2	26
Mac OS X	27
Contact Information	28
Warranty Information	29

## Introduction

Thanks for choosing the Transit USB by M-Audio. Transit USB is your compact, professional audio solution for any Windows or Macintosh computer\*, using the convenience of USB connectivity – no need to disassemble your computer, no bulky external power supplies. Transit USB gives you full 24 bit digital audio at sampling rates from 8 kHz to 96 kHz, with the flexibility of both analog and optical digital connectors in a lightweight form factor you can carry with you anywhere.

Please take the time to read this concise Users' Guide. It will explain how to install the Transit USB on your computer, and tell you how to get the best performance out of your Transit USB audio interface.

\* must meet minimum system requirements

## What's in the Box?

The following items are included with your Transit USB:

- Transit USB audio interface
- One (1) standard USB cable
- One (1) TosLink to 1/8" Optical plug adapter
- M-Audio Driver CD (includes driver installation software)
- Users' Guide and Warranty Card

## Transit USB Specifications

### Product and Operational Features:

- Single USB I.I connection for input and output
- S/PDIF 1/8" mini Optical In or 1/8" mini Analog Mic/Line In
- S/PDIF optical out and 1/8" mini Analog Line Out
- Sleek, slim plastic case with blue power LED.
- Completely USB powered (no power supply needed)
- One year warranty

## Technical Features:

- Supports the following sampling frequencies (in Hz): 8000, 9600, 11025, 12000, 16000, 22050, 24000, 32000, 44100, 48000, 88200\*, 96000
- Supports 16 & 24-bit Linear PCM I/O, 16-bit AC-3 and 16-bit DTS output over S/PDIF TosLink
- Supports the following audio protocols: ASIO, WDM, MME, SoundManager, CoreAudio
- Unique hybrid optical/analog input jack automatically detects whether input is analog or optical digital
- 1/8" mic input provides power for electret condenser mics
- software-controlled input and output levels, using standard Windows or MacOS volume controls

\*Transit USB does not support analog recording at 88200 Hz.

## Audio Performance Specifications:

- **Input:** Dynamic Range 100 dB (typical -60 dB input, A-weighted); Signal-to-Noise Ratio 100 dB (typical, A-weighted); THD+N -90 dB = 0.00316% (typical)
- **Output:** Dynamic Range 104 dB (typical -60 dB input, A-weighted); Signal-to-Noise Ratio 104 dB (typical, A-weighted); THD+N -94 dB = 0.00316% (typical)

## System Requirements, Windows:

### Minimum:

- Pentium II 350 MHz
- 64 MB RAM
- CD-ROM drive
- Available USB I.I port
- Windows 98SE, Me, 2000 (SP4) or XP (SP1)

### Recommended:

- Pentium III 500 MHz or faster
- 128 MB RAM or more
- DVD-ROM drive and DVD player application (for AC-3 & DTS pass-through)

## System Requirements, Macintosh:

### Minimum:

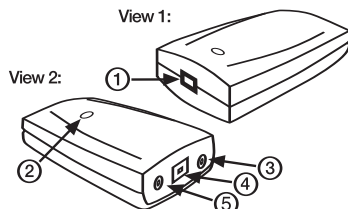
- G3, G4\*, iMac, iBook or Powerbook with native USB support
- 64 MB RAM • CD-ROM drive
- Mac OS version 9.2.2, MacOSX version 10.1.5 or MacOSX “Jaguar” version 10.2.6 or later

### Recommended:

- G3, G4\*, iMac, iBook or Powerbook with native USB support
- 128 MB RAM
- DVD-ROM drive
- MacOSX “Jaguar” version 10.2.4 or later

\* G3 and G4 accelerator cards not supported; AC-3 & DTS pass-through supported only with OS X 10.3 or higher

## Transit USB Features



This diagram is an illustration of your Transit USB, with descriptions and information about its physical features, which are described here.

1. USB Connector – Connect the squared “device” end of the supplied USB cable here.
2. Power LED – This LED lights bright blue when Transit USB receives power from your computer’s USB port. This will occur when Transit USB sees a valid USB connection to your computer, and the computer is powered on and the USB port enabled.

3. Optical/Analog Mic/Line Input Jack - This hybrid digital/analog jack accepts either analog input via a standard 1/8" stereo mini plug, or optical S/PDIF digital input via an included mini-optical adapter. The input jack automatically senses whether the input is analog or digital. The analog input can also accept mic-level inputs, and provides plug-in power for electret condenser microphones.
4. Optical Digital-Output Connector - This is a standard optical S/PDIF connector for digital audio (sometimes called a TosLink connector) that accepts a standard optical digital cable. This port can output either PCM stereo digital audio or digitally-encoded AC-3 or DTS pass-through. The output comes with a plastic cover that should be removed and stored for use when transporting the Transit USB.
5. Line-Output Jack - This 1/8" mini-jack accepts a standard stereo plug, such as those used for connection with portable audio devices and powered computer speakers. If you need to connect the Transit to a home stereo system, you may obtain a cable or adapter with a 1/8" stereo plug on one end and two male RCA plugs on the other. This output also boasts an enhanced current drive for use with a pair of headphones.

## Software Installation

Your Transit USB comes with driver software that allows it to communicate with your particular computer (Mac or PC) and operating system. Please locate the section for your computer type and operating system and follow the instructions for installing the driver software.

Your Transit USB comes with a standard USB cable. The squared end of the cable connects to the Transit USB; the flat end connects to your computer’s USB port. Do NOT connect the Transit USB to your computer until instructed to do so.

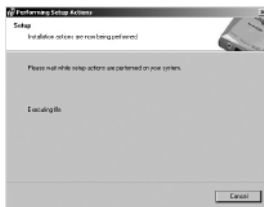
## Windows XP

1. Place the Transit USB CD into your CD-ROM drive. Do NOT connect the Transit USB to your computer’s USB port at this time. Browse the CD content and double click the Transit USB folder. Then double click the Transit USB Icon.

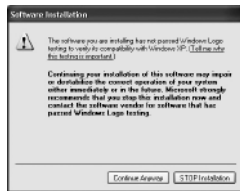
- The M-Audio Transit USB Installer screen will appear, asking you to confirm that you wish to install Transit USB. Click Next to continue.



- The installer will copy the Transit USB files to your computer's hard drive.



- The Software Installation window may appear one or more times, warning you that the driver software has not passed the Windows Logo testing. Click the "Continue Anyway" button.



- After the driver files have been installed, the Performance Enhancements screen appears with default settings for CD and DVD playback selected. Unless you're certain your hardware is incompatible with these settings, it is recommended that you leave them selected.



- You will be prompted to restart your computer. Click Finish to restart.



- On rebooting, the M-Audio Transit USB Control Panel icon will appear in the system tray. Connect the Transit USB to your computer's USB port. Windows will now display the Found New Hardware dialog and will open the New Hardware Wizard.
- Choose the selection, "Install the software automatically," and click Next.



- The New Hardware Wizard will write the remaining files to your system. You may once again see the warning that the driver software has not passed the Windows Logo testing; click "Continue Anyway" and allow the installation to complete. Click Finish.



- After the installation is complete, you may double-click on the M-Audio Transit USB Control Panel icon to open the Transit USB Control Panel. See the section "Transit USB Control Panel" for more information on the Control Panel's features and function.

## Windows 2000

It is important to make sure, when installing under Windows 2000, that you have the Service Pack 3 installed. To obtain this update, visit the Windows Updates area at [www.microsoft.com](http://www.microsoft.com).

**Note:** Transit USB requires that you have Microsoft DirectX version 8.1 or later installed. The Transit USB installer will automatically check for the correct version of DirectX and install the latest Direct X update. This update will be skipped if you already have DirectX version 8.1 (or higher) in your system.

- Place the Transit USB CD into your CD-ROM drive. Do NOT connect the Transit USB to your computer's USB port at this time. Browse the CD content and double click the Transit USB folder. Then double click the Transit USB Icon.

- The M-Audio Transit USB Installer screen will appear, asking you to confirm that you wish to install Transit USB. Click Next to continue.



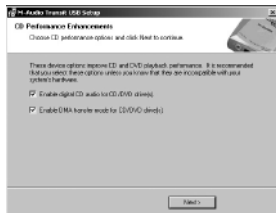
- The installer will begin to copy the Transit USB files to your computer's hard drive.



- The Digital Signature window will appear, warning you that the driver software does not contain a Microsoft digital signature. Click the Yes button to continue the installation.



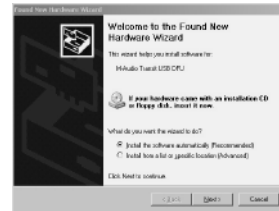
- Once the driver files have successfully been installed, the CD Performance Enhancements screen will appear. By default, the performance enhancement settings for CD and DVD playback will be selected. It is recommended you leave them selected unless you are certain that your hardware is incompatible with these settings.



- If you selected DVD performance enhancements, you will be prompted to restart your computer. Click Finish and allow your computer to restart.



- On rebooting, the M-Audio Transit USB Control Panel icon will appear in the system tray. Connect the Transit USB to your computer's USB port. Windows will display the Found New Hardware dialog and will open the New Hardware Wizard.
- Choose "Install the software automatically," and click Next.



- The New Hardware Wizard will write the remaining files to your system. When the installation is complete, click Finish.



- After the installation is complete, you may double-click on the M-Audio Transit USB Control Panel icon to open the Transit USB Control Panel. See the section "Transit USB Control Panel" for more information on the Control Panel's features and function.

## Windows Me

**Note: Transit USB requires that you have Microsoft DirectX version 8.1 or later installed. The Transit USB installer will automatically check for the correct version of DirectX and install the latest Direct X update. This update will be skipped if you already have DirectX version 8.1 (or higher) in your system.**

- Place the Transit USB CD into your CD-ROM drive. Do NOT connect the Transit USB to your computer's USB port at this time. Browse the CD content and double click the Transit USB folder. Then double click the Transit USB icon.
- The M-Audio Transit USB Installer screen will appear, asking you to confirm that you wish to install Transit USB. Click Next to continue.



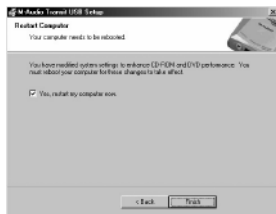
- The installer will copy the Transit USB files to your computer's hard drive.



- Once the driver files have successfully been installed, the CD Performance Enhancements screen will appear. By default, the performance enhancement settings for CD and DVD playback will be selected. It is recommended you leave them selected unless you are certain that your hardware is incompatible with these settings.



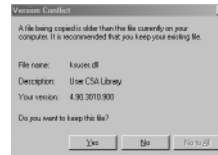
- After the driver files have been installed, you will be prompted to restart your computer. Click Finish and your computer will reboot.



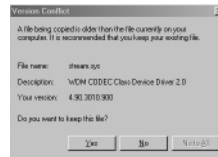
- On rebooting, the M-Audio Transit USB Control Panel icon will appear in the system tray. Connect the Transit USB to your computer's USB port.
- The New Hardware Wizard will write the remaining files to your system.



- If you are running an older version of Windows ME, you may be required to replace the file ksuser.dll. Click Yes to continue.



- If you are running an older version of Windows ME, you may be required to replace the file stream.sys. Click Yes to continue.



- After the installation is complete, you may double-click on the M-Audio Transit USB Control Panel icon to open the Transit USB Control Panel. See the section "Transit USB Control Panel" for more information on the Control Panel's features and function.

## Windows 98SE

**Note:** Transit USB requires that you have Microsoft DirectX version 8.1 or later installed. The Transit USB installer will automatically check for the correct version of DirectX and install the latest Direct X update. This update will be skipped if you already have DirectX version 8.1 (or higher) in your system.

- Place the Transit USB CD into your CD-ROM drive. Do NOT connect the Transit USB to your computer's USB port at this time. Browse the CD content and double click the Transit USB folder. Then double click the Transit USB Icon.
- The M-Audio Transit USB Installer screen will appear, asking you to confirm that you wish



to install Transit USB. Click Next to continue.



3. The installer will begin to copy the Transit USB files to your computer's hard drive.



4. Once the driver files have successfully been installed, the CD Performance Enhancements screen will appear. By default, the performance enhancement settings for CD and DVD playback will be selected. It is recommended you leave them selected unless you are certain that your hardware is incompatible with these settings.



5. After the driver files have been installed, you will be prompted to restart your computer.

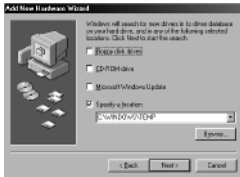
Click Finish and your computer will reboot.



6. On rebooting, the M-Audio Transit USB Control Panel icon will appear in the system tray. Connect the Transit USB to your computer's USB port. Windows will display the Found New Hardware dialog and will open the Windows Hardware Wizard. Choose the default "Search for the best driver for your device" and click Next.



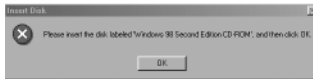
7. Windows will ask you for the location of the driver, uncheck all boxes except "Specify Location" and click "Next".



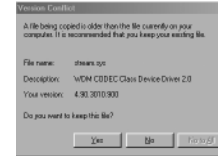
8. Windows will ask “What do you want to install?” Select the default “The updated driver (Recommended)” and click “Next”.



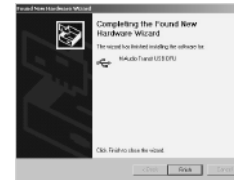
9. In some cases, Windows may ask you to insert your Windows CD-Rom. If so, insert the CD and, using the Windows Explorer menu, navigate to your CD-Rom drive. Select Win98SE to open the folder and click "OK".



10. In some Windows will ask you to update your stream.sys file. Click “Yes” to continue.



11. The New Hardware Wizard will write the remaining files to your system. When the installation is complete, click Finish.



12. After the installation is complete, you may double-click on the M-Audio Transit USB Control Panel icon to open the Transit USB Control Panel. See the section “Transit USB Control Panel” for more information on the Control Panel’s features and function.

### Mac OS 9.2.2

1. Insert the Transit USB driver CD into your CD-ROM drive. AutoRun will open the CD and allow you to view its contents.
2. Double click on the “M-Audio Transit USB Installer” icon.
3. Click Continue in the initial installer introduction screen.



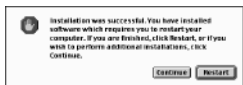
4. An informational screen will appear next. Please read through it's contents and click Continue.



5. For first-time installations, the default Easy Install is the desired selection.. Click Install to continue.



6. You will be prompted to restart your computer. Click Continue.



7. When your computer has restarted, connect the Transit USB to your computer's USB port.  
 8. Under Control Panels, select Sound, then select the Output tab. Click on M-Audio Transit USB to select Transit USB as your default audio device.

## Mac OS X

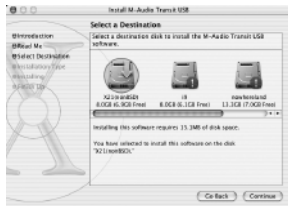
1. Insert the Transit USB driver CD into your CD-ROM drive and open the CD to view its contents.
2. Double click the M-Audio Transit USB Installer.dmg file. An icon labeled Transit USB will appear on your desktop.
3. Double click on the Transit USB icon. The file M-Audio Transit USB Installer.mpkg will appear. Double click on the installer file.
4. You will need your Administrator Password for the next step. To continue, click the lock icon in the lower left corner of the window that states, "Click The Lock To Make Changes." In OSX version 10.2.2 this authentication dialog will automatically appear.



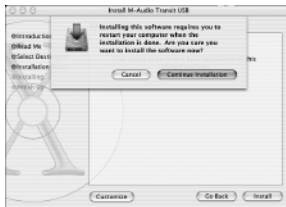
5. Enter your password and click "OK."
6. The next window "Welcomes You..." to the installation process. Click "Continue."



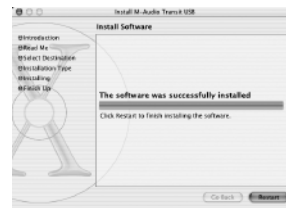
7. Select your OS X hard drive. Click "Continue."



- 8. If prompted to do so, click "Upgrade" to continue.
- 9. When prompted, click "Continue Installation."



10. When prompted, click "Restart" to finish the installation.



- 11. After the computer has restarted, now plug the Transit into your computer's USB Port.
- 12. Go to "System Preferences" in the Apple Menu. Select the "Sound" preference panel, and click the "Output" tab. Select "M-Audio Transit USB" to choose the Transit USB as your default output device.

## Transit USB Audio Connections

### Output Connections

Your Transit USB is equipped with an analog stereo output on a 1/8" mini jack. This analog output can be connected to powered speakers, headphones or to the analog inputs of your home stereo system, using a 1/8"-to-RCA adapter.

The Transit USB also has an optical digital output, sometimes referred to as a TosLink connector. You may connect this digital output to the optical digital inputs of a home theater or stereo, CD-R or MiniDisc recorder, or any device that supports a two-channel optical digital input. When outputting a two-channel signal, the signal at Transit USB's analog and digital outputs is identical.

**NOTE: If you need to connect to a device with coaxial S/PDIF inputs, you may purchase the Co2 Coaxial/Optical Bi-directional Converter from M-Audio for this purpose.**

This optical digital output can also transmit a multichannel encoded digital audio signal from a Dolby Digital or DTS-equipped source. Transit USB's digital output supports 16-bit AC-3

encoded signals. Note that when “Dolby Digital / DTS pass-through, 16-bit, 48000 Hz” is selected from the Transit USB Control Panel, Transit USB’s analog outputs are defeated. (See the next section for more information.)

## Input Connections

Your Transit USB is equipped with a unique combination optical/analog input which can accept a standard 1/8” stereo analog input at either Mic or Line level. This input can also accept an optical digital input, via the included TosLink-to-mini optical adapter. Transit USB’s input jack automatically detects whether the input is analog or digital.

Transit USB’s input can also supply +5V bias voltage to power an electret condenser microphone such as those supplied with some computer audio products.

## Transit USB’s Control Panel

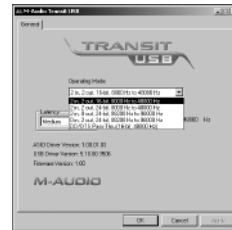
In Windows, you can open the Transit USB’s control panel by double clicking on the M-Audio icon in the system tray. On the Mac, select Control Panels under the Apple menu, and locate the Transit USB control panel selection.

### Operating Mode

In this drop down menu you can select how the Transit USB sends and/or receives audio. The following options are available:

- 2-In/2-Out, 16-bit, 8000 – 48000 Hz
- 2-In/2-Out, 24-bit, 8000 – 48000 Hz
- 2-In/0-Out, 24-bit, 88200 – 96000 Hz
- 0-In/2-Out, 24-bit, 88200 – 96000 Hz
- Dolby Digital / DTS pass-through, 16-bit, 48000 Hz

**Note: Due to USB 1.1 bandwidth limitations and hardware constraints, sampling rates above 48000 Hz do not support full duplex (i.e., simultaneous input and output) mode.**



### Latency

Latency is defined as the time it takes for your input signal to pass through your audio software and appear at the outputs. Smaller buffer sizes result in lower latency, but may not function well with slower systems. This drop-down menu selects the buffer size Transit USB uses to handle digital audio streaming.

The default Latency setting is “Medium.” This setting may adequately serve your purposes, but if you wish to, you can experiment with lower settings. If you experience stuttering or crackling in your audio playback, try using a higher latency setting.

## Transit USB and the Windows Media Drivers

### WDM/MME

Transit USB’s Windows drivers support Windows’ native WDM/MME protocol, allowing you to use Transit USB as your Windows default audio device. If Transit USB is the only audio device installed on your computer, Windows will select it automatically. If you have other audio devices installed, you may need to select it as your default device:

1. Click the Start menu, then choose Settings/Control Panel
2. Open the audio properties panel. In Windows XP it’s labeled “Sounds and Audio

Devices;" in Windows 2000 and Windows ME it's labeled "Sounds and Multimedia;" and in Windows 98SE it's called "Multimedia." Select the Audio tab.

3. Under Playback and Record, select Transit USB from the drop down list. Click Apply, then click Okay to close the Control Panel.

## ASIO

Transit USB also supports Steinberg's ASIO protocol, used in applications such as Cubase, Reason, Live, Logic and other programs. Transit USB's ASIO drivers are automatically installed. If you have other audio devices installed in your computer, you may need to select Transit USB as the ASIO device in your audio software. Refer to the instructions in your audio software for details.

## Transit USB and Macintosh Audio

### Mac OS 9.2.2

Transit USB supports Apple's Sound Manager protocol under OS 9. To select the Transit USB as your system's audio device:

1. Under the Apple menu, select Control Panel / Sound.
2. Under the Output menu, select Transit USB from the list of available devices. Close the control panel.

### ASIO Drivers:

Transit USB also supports Steinberg's ASIO protocol under OS 9, used in applications such as Cubase, Reason, Live, Logic and Digital Performer 3. In order to use Transit USB's ASIO drivers with your DAW application, you will need to copy the drivers into your program's ASIO folder.

1. Transit USB's driver installer will create an ASIO folder on your desktop. Double click on it to open it.
2. Double click on your computer's hard disk icon and browse to your audio software's

3. Drag Transit USB's ASIO driver files to the ASIO folder within your application's folder.

## Mac OS X

The Transit USB supports MacOS X Core Audio protocol. To select the Transit USB as your system's audio device:

1. Under the Apple menu, select System Preferences / Sound
2. Select Transit USB under input and output tabs to choose the Transit USB as your default audio device.

## Contact Information

For additional help, contact Midiman/M-Audio Technical Support by telephone (626-445-8495, 9-5 PST M-F), by fax (626-445-7564) or by e-mail (techsupt@m-audio.com).

**M-AUDIO U.S.**

45 E. Saint Joseph St.  
Arcadia, CA 91006-2861  
U.S.A.

Sales Information: 626-445-2842  
Sales Information (email): info@m-audio.com  
Tech Support: 626-445-8495  
Tech Support (email): techsupt@m-audio.com  
Fax: 626-445-7564  
Internet Home Page: <http://www.m-audio.com>

**M-AUDIO Canada**

1400 St-Jean Baptiste Ave., #150  
Quebec City, QC G2E 5B7  
Canada

Tel: 418-872-0444  
Fax: 418-872-0034  
Email: midimancanada@m-audio.com  
Internet Home Page: <http://www.m-audio.ca>

**M-AUDIO Deutschland (Germany)**

Kuhallmand 34  
D-74613 Ohringen  
Germany

Sales Information: 49 7941 98 7000  
Sales Information (email): info@m-audio.de  
Technical Support: 49 7941 98 70030  
Technical Support (email): support@m-audio.de

**M-AUDIO U.K.**

Unit 5, Saracen Industrial Estate  
Mark Rd.  
Hemel Hempstead, Herts HP2 7BJ  
England

Sales Information: 44 (0) 144 241 6590  
Sales Information (email): info@maudio.co.uk  
Technical Support: 44 (0) 871 717 7102  
Tech Support (email): richard@maudio.freeserve.co.uk  
Fax: 44 (0) 144 224 6832  
Internet Home Page: <http://www.maudio.co.uk>

**M-AUDIO France**

Unit 5, Saracen Industrial Estate  
Mark Rd.  
Hemel Hempstead, Herts HP2 7BJ  
England

Sales Information: 0810 001 105  
Sales Information (email): info@m-audio-france.com  
Technical Support: 0820 00 731  
Tech Support (email): support@m-audio-france.com  
Fax: 44 (0) 144 224 6832  
Internet Home Page: <http://www.maudio.co.uk>

**M-AUDIO Japan**

Annex Building 6F  
2-18-10 Marunouchi  
Naka-Ku, Nagoya 460-0002  
Japan

Tel: 81 52 218 3375  
Fax: 81 52 218 0875  
Technical Support: 0820 00 731  
Email: info@m-audio.co.jp

## Warranty Information

M-AUDIO warrants this product, under normal use, to be free of defects in materials and workmanship for a period of One (1) Year from date of purchase, so long as: the product is owned by the original purchaser, with proof of purchase from an authorized M-AUDIO dealer and, the product has been registered to the original purchaser; the purchaser having returned to M-AUDIO the completed product warranty card. This warranty explicitly excludes power supplies and included cables which may become defective as a result of normal wear and tear.

In the event that M-AUDIO receives, from an original purchaser and within the warranty coverage period, written notice of defects in materials or workmanship, M-AUDIO will either replace the product, repair the product, or refund the purchase price at its option. In the event repair is required, shipment to and from M-AUDIO and possible nominal handling charges shall be born by the purchaser. In the event that repair is required, a Return Authorization number must be obtained from M-AUDIO. After this number is obtained, the unit should be shipped back to M-AUDIO in a protective package with a description of the problem and the Return Authorization clearly written on the package.

In the event that M-AUDIO determines that the product requires repair because of user misuse or regular wear, it will assess a fair repair or replacement fee. The customer will have the option to pay this fee and have the unit repaired and returned, or not pay this fee and have the unit returned un-repaired.

The remedy for breach of this limited warranty shall not include any other damages. M-AUDIO will not be liable for consequential, special, indirect, or similar damages or claims including loss of profit or any other commercial damage, even if its agents have been advised of the possibility of such damages, and in no event will M-AUDIO's liability for any damages to the purchaser or any other person exceed the price paid for the product, regardless of any form of the claim. M-AUDIO specifically disclaims all other warranties, expressed or implied. Specifically, M-AUDIO makes no warranty that the product is fit for any particular purpose. This warranty shall be construed, interpreted, and governed by the laws of the state of California. If any provision of this warranty is found void, invalid or unenforceable, it will not affect the validity of the balance of the warranty, which shall remain valid and enforceable according to its terms. In the event any remedy hereunder is determined to have failed of its essential purpose, all limitations of liability and exclusion.

## Free Manuals Download Website

<http://myh66.com>

<http://usermanuals.us>

<http://www.somanuals.com>

<http://www.4manuals.cc>

<http://www.manual-lib.com>

<http://www.404manual.com>

<http://www.luxmanual.com>

<http://aubethermostatmanual.com>

Golf course search by state

<http://golfingnear.com>

Email search by domain

<http://emailbydomain.com>

Auto manuals search

<http://auto.somanuals.com>

TV manuals search

<http://tv.somanuals.com>