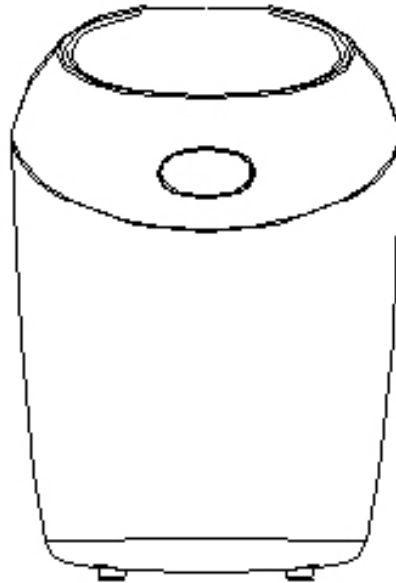




## SINGLE BOTTLE WINE CHILLER

**EWWC2SI**

**-HOUSEHOLD USE ONLY-**



**⚠ CAUTION:**

**BEFORE USE, PLEASE READ AND FOLLOW ALL IMPORTANT SAFEGUARDS, PRECAUTIONS AND OPERATING INSTRUCTIONS.**

## Table of Contents

<b>Safety Instructions</b> .....	<b>3-4</b>
<b>Parts and Features</b> .....	<b>5</b>
<b>Operating Instructions</b> .....	<b>6</b>
<b>Cleaning and Maintenance</b> .....	<b>6</b>
<b>Warranty</b> .....	<b>7</b>

## What You Need to Know About Safety Instructions

Warning and Important Safety Instructions appearing in this manual are not meant to cover all possible conditions and situations that may occur. Common sense, caution and care must be exercised when installing, maintaining, or operating appliance.

Always contact your dealer, distributor, service agent or manufacturer about problems or conditions you do not understand.

### Recognize Safety Symbols, Words, Labels

#### **⚠ WARNING**

**WARNING**-Hazards or unsafe practices which **COULD** result in severe personal injury or death.

#### **⚠ CAUTION**

**CAUTION**-Hazards or unsafe practices which **COULD** result in minor personal injury.

## **IMPORTANT SAFEGUARDS**

#### **⚠ WARNING**

When using electrical appliances, basic safety precaution should always be followed, including the following:

## **IMPORTANT SAFEGUARDS**

- 1) Read all instructions.**
- 2) This appliance is for household use only. Do not use outdoors.
- 3) Do not use this appliance for other than its intended use.
- 4) Before using for the first time, check if voltage indicated on the base of the appliance corresponds to the voltage in your home.
- 5) Do not turn the power on unless this appliance is properly assembled.
- 6) Close supervision is necessary when any appliance is used by or near children.
- 7) Do not operate any appliance with a damaged cord or plug, or after the appliance malfunctions or has been damaged in any manner.

- Return appliance to authorized service center for examination, repair or adjustment.
- 8) The use of attachments or accessories not recommended or sold by the manufacturer may result in fire, electric shock or injury.
  - 9) Unplug the appliance from the outlet when not in use, assembling and disassembling, and before cleaning. Make sure the appliance cools down completely before assembling, disassembling and cleaning.
  - 10) Do not let cord hang over edge of table or counter, or touch hot surfaces.
  - 11) Do not place the appliance on or near a hot gas or electric burner, or in a heated oven.
  - 12) Never put ice or water inside the unit for cooling purpose.
  - 13) Do not operate the AC/DC switching mode power supply in wet or damp place.
  - 14) Do not operate the product with any paper, plastic bag or cloth on the back of the wine chiller that may block the air inlet.
  - 15) To avoid electric shock, do not open the case. There are no user-serviceable parts inside.

 **WARNING:**

**To protect against electric shock, fire, and injury to persons, do not immerse main cord, plug or unit in water or any other liquid.**

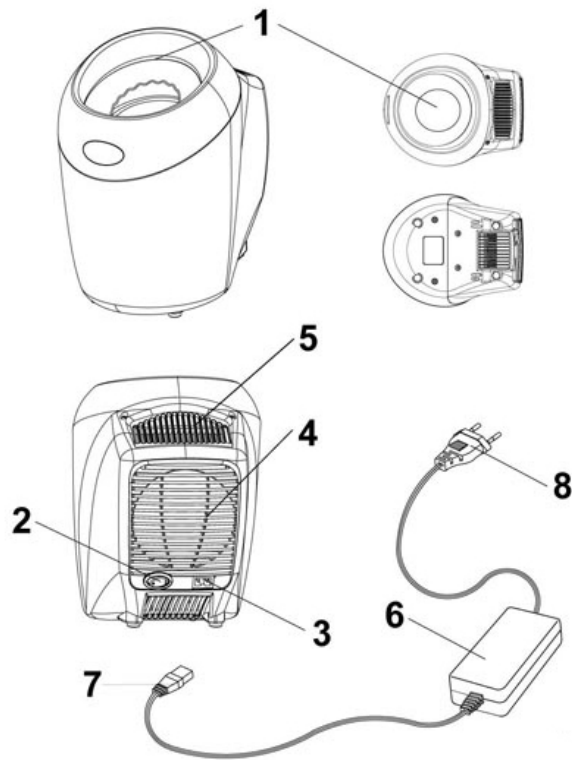
 **WARNING:**

**This product is equipped with a polarized plug (one blade is wider than the other blade) as a safety feature to reduce the risk of electrical shock. This plug will fit into a polarized outlet only one way. This is a safety feature. If you are unable to insert the plug into the electrical outlet, try reversing the plug. If the plug still does not fit, contact a qualified electrician.**

**Never use the plug with an extension cord unless the plug can be fully inserted into the extension cord. Do not alter the plug of the appliance or any extension cord used with this appliance. Do not attempt to defeat the safety purpose of the polarized plug.**

**SAVE THESE INSTRUCTIONS**

## Parts and Features



1. Aluminum Container
2. Power Switch
3. DC Power Inlet Socket
4. Air Inlet
5. Air Outlet
6. AC/DC Switching Mode Power Supply
7. DC Jack
8. AC Plug with Power Cord

### SPECIFICATIONS:

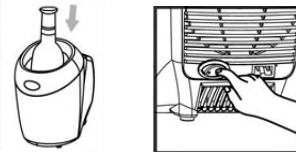
- Power: 60 Watts
- Aluminum container: 3.5-4.0 inch internal diameter
- Switching mode power supply: 12V d.c. 5Amp
- Dimension: 6.7 (diameter) x 10.8 (H) inches

## Before Your First Use

Carefully unpack the wine chiller and remove all packaging materials. Wipe the unit with a clean, damp cloth. Do not immerse the product in water or other liquid.

## Operating Instructions

1. Place the bottle into the wine chiller in up right position.
2. Plug the DC power jack (7) of the AC/DC power adaptor (6) to the DC socket (3) of the unit.
3. Connect the AC plug (8) of the power supply adaptor to the main socket.
4. Press the power switch (2) to turn the wine chiller on. The LED panel will illuminate and the wine chiller will start to cool immediately.
5. Press the power switch again to turn the wine chiller off.



## Cleaning and Maintenance

COMPLETELY CLEAN AND DRY ALL PARTS AFTER EVERY USE.

Be sure to unplug the appliance before cleaning. To protect against electrical shock, do not immerse cord, plug or unit in water or other liquid.

Never use harsh abrasives, caustic cleaners on the interior surface. Wipe dry with clean cloth. For stubborn stains, use a nylon or plastic scouring pad or a powdered, non-abrasive cleaner.

To clean the exterior finish, simply wipe with a clean damp, cloth.

# SAVE THESE INSTRUCTIONS

# **eWAVE**

## **Limited Warranty**

This **Ewave** product is warranted, to the original purchaser or gift recipient, to be free from any manufacturing defects under normal use and conditions for a period of one (1) year from the date of purchase as shown on retailer's receipt.

The obligation of **MC Appliance** under this warranty shall be limited to repair or replacement (at our option) during the warranty period, of any part that proves to be defective in material or workmanship under normal installation and use. The product is to be returned to **MC Appliance** or an Authorized Service Center **POSTAGE PREPAID**. A copy of the original receipt along with your name, address and phone number must accompany products returned. Include a description of the defect along with the date you purchased the product.

This warranty shall be invalid if the product is damaged as a result of misuse, abuse, negligence, defacement, destruction, accident, fire or other casualties or alterations in any manner. Improper repair, improper use of electrical voltages or currents, alteration of serial number, maintenance by any person or entity other than our own Service Facility or Center, or any use not in conformity with product instruction, shall render this warranty invalid.

**MC Appliance** assumes no responsibility for damage resulting from the use of this product in a manner or location other than that for which it was intended.  
**WARRANTY CONDITIONAL TO NORMAL AND NON-COMMERCIAL USE OF THIS APPLIANCE FOR DOMESTIC USE ONLY.**

For the nearest Authorized Service Center, contact:  
**Ewave** Customer Service: 1-888-775-0202  
Or visit our website at [www.mcappliance.com](http://www.mcappliance.com)

## Free Manuals Download Website

<http://myh66.com>

<http://usermanuals.us>

<http://www.somanuals.com>

<http://www.4manuals.cc>

<http://www.manual-lib.com>

<http://www.404manual.com>

<http://www.luxmanual.com>

<http://aubethermostatmanual.com>

Golf course search by state

<http://golfingnear.com>

Email search by domain

<http://emailbydomain.com>

Auto manuals search

<http://auto.somanuals.com>

TV manuals search

<http://tv.somanuals.com>