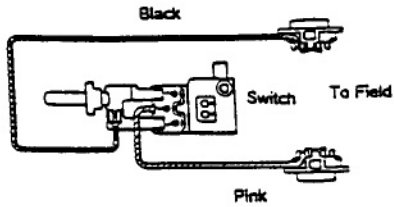




6-1/4" (160mm) CORDLESS CIRCULAR SAW

Model 5046DWB



IMPORTANT! - To assure product SAFETY and RELIABILITY, repairs, maintenance or adjustments should be performed by MAKITA Service Centers, or other qualified service organizations. Always use MAKITA replacement parts.

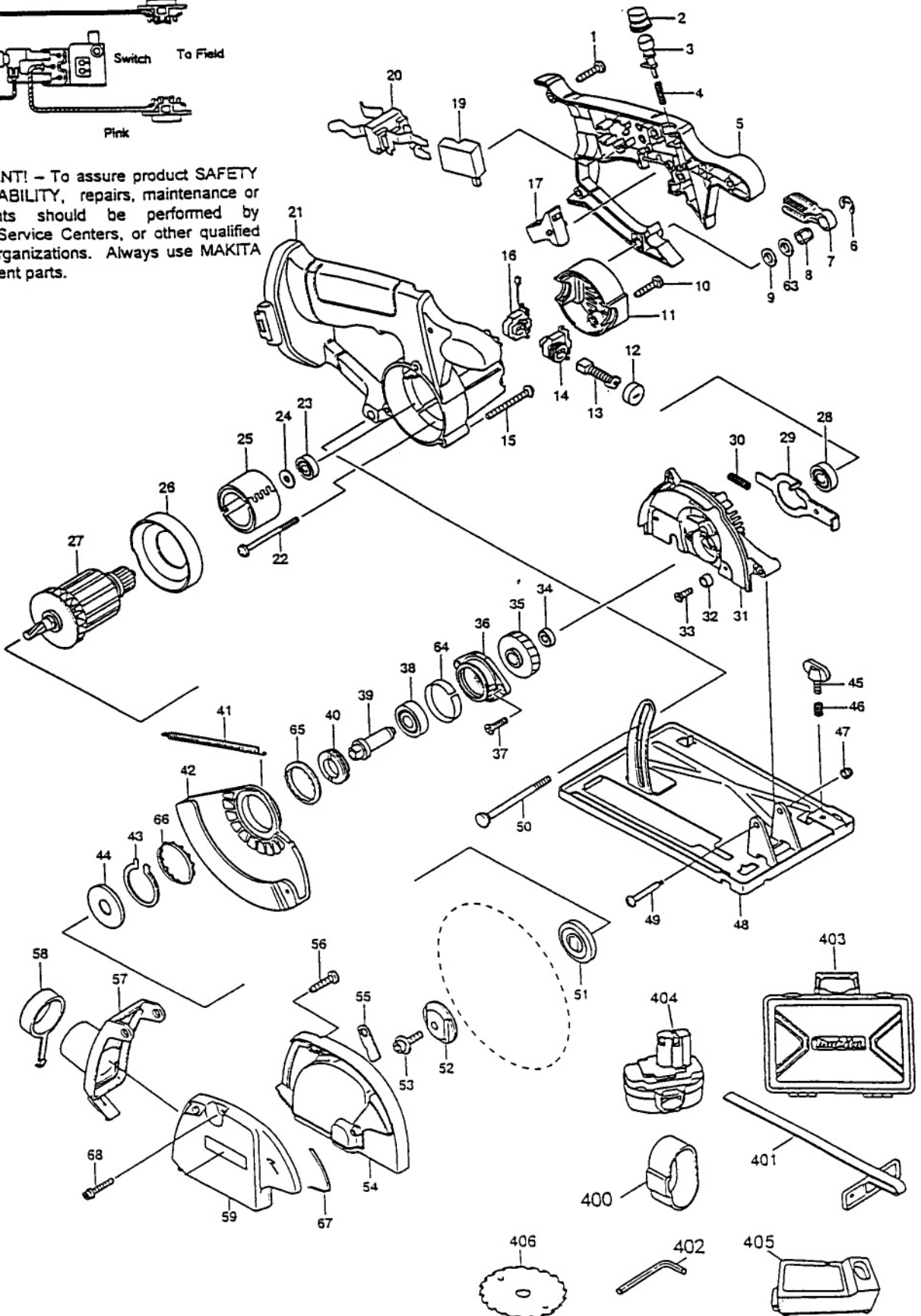


Fig.	Part No.	Qty. Used	Description	Fig.	Part No.	Qty. Used	Description
1	265995-6	6	TAPPING SCREW 4x18	37	265034-2	2	C.S.H. SCREW M5x16
2	421718-4	1	DUST COVER	38	211129-9	1	BALL BEARING 6201DDW
3	417084-5	1	SWITCH BUTTON	39	323816-9	1	SPINDLE
4	233194-8	1	COMP. SPRING 4	40	285802-7	1	BEARING RETAINER 19-33
5	416691-1	1	HANDLE COVER	41	231821-1	1	TENSION SPRING 3
6	961014-3	1	STOP RING E-8	42	151818-3	1	SAFETY COVER cpl.
7	272242-8	1	LEVER 42	43	961155-5	1	RETAINING RING S-38
8	252159-1	1	HEX. NUT M6	44	267750-2	1	CUP WASHER 16
9	267004-7	1	FLAT WASHER 6	45	265701-9	1	SCREW M6x14
10	265995-6	2	TAPPING SCREW 4x18	46	231316-4	1	COMPRESSION SPRING 7
11	416639-3	1	REAR COVER	47	252103-8	1	HEX. LOCK NUT M5-8
12	643941-3	2	HOLDER CAP	48	165279-1	1	BASE
13	191970-5	1	CARBON BRUSH CB-429 SET	49	265056-2	1	P.H. SCREW M5
14	643943-9	1	BRUSH HOLDER	50	266195-1	1	C.S. BOLT M6x90
15	911263-2	3	P.H. SCREW M5x40	51	224151-7	1	INNER FLANGE 40
16	643944-7	1	BRUSH HOLDER (Incl. 1 ea. 654187-6 Receptacle)	52	224275-9	1	OUTER FLANGE 40
17	416642-4	1	SWITCH LEVER	53	266024-8	1	H.S.H. BOLT M6x20
19	651956-6	1	SWITCH (TG72BD)	54	417100-3	1	DUST BOX L
20	643942-1	1	BATTERY HOLDER	55	344838-6	1	EARTH PLATE
21	416690-3	1	MOTOR HOUSING	56	265995-6	2	TAPPING SCREW 4x18
22	266209-6	2	TAPPING SCREW 4x60	57	151817-5	1	DUST CAP cpl. (Incl. 1 ea. 421717-6 Packing)
23	210023-2	1	BALL BEARING 627DDW	58	421362-7	1	CAP
24	253823-7	1	FLAT WASHER 7	59	417106-1	1	DUST BOX R
25	632828-4	1	YOKE UNIT	63	267004-7	1	FLAT WASHER 6
26	416692-9	1	BAFFLE PLATE	64	344725-9	1	THICKNESS RING
27	510034-0	1	ARMATURE Ass'y 18V (Incl. Fig. 23,24, & 28)	65	344857-2	1	SPACER
28	211088-7	1	BALL BEARING 6000DDW	66	344857-2	1	SPACER
29	344681-3	1	SHAFT LOCK	67	421729-9	1	PACKING (A)
30	233092-6	1	COMP. SPRING 5	68	265474-4	1	H.S.H. BOLT M6x30
31	151845-0	1	GEAR HOUSING cpl. (Incl. 1 ea. 213434-0 O-Ring 26)	ACCESSORIES			
32	262049-0	1	RUBBER RING 6	400	414938-7	1	BATTERY COVER
33	251368-9	1	C.S. SCREW M6	401	164095-8	1	GUIDE RULE
34	211014-6	1	BALL BEARING 606	402	783203-8	1	HEX. WRENCH 5
35	226522-4	1	HELICAL GEAR 53	403	824524-0	1	PLASTIC TOOL CASE
36	317296-9	1	BEARING BOX	404	192829-9	1	BATTERY 1833
				405	DC1801	1	BATTERY CHARGER
				406	A-90685	1	CARBIDE SAW BLADE 46T

Free Manuals Download Website

<http://myh66.com>

<http://usermanuals.us>

<http://www.somanuals.com>

<http://www.4manuals.cc>

<http://www.manual-lib.com>

<http://www.404manual.com>

<http://www.luxmanual.com>

<http://aubethermostatmanual.com>

Golf course search by state

<http://golfingnear.com>

Email search by domain

<http://emailbydomain.com>

Auto manuals search

<http://auto.somanuals.com>

TV manuals search

<http://tv.somanuals.com>