

# Makita

# 18V LXT LITHIUM-ION CORDLESS 3/8" ANGLE DRILL KIT

DURABLE, LOW PROFILE ANGLE HEAD FOR USE IN CLOSE QUARTERS APPLICATIONS SUCH AS BETWEEN STUDS WHERE CONVENTIONAL DRILLS CANNOT FIT

Makita-Built 4-Pole Motor Delivers 121 in.lbs. of Torque in a Compact Size

Variable Speed (0 - 1,800 RPM) for a Wide Range of Drilling and Driving Applications

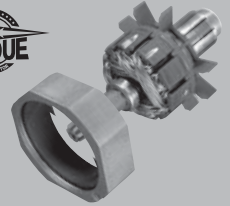
Compact Design at Only 12-3/8" Long and Weighs Only 3.5 lbs. for Reduced Operator Fatigue

3/8" Keyed Metal Chuck for Improved Bit Gripping Power and a Lower Profile for use in Close Quarters Applications

Built-in L.E.D. Light Illuminates the Work Area

## POWER

MAX  
TORQUE



Makita-built 4-pole motor delivers 121 in.lbs. of torque in a compact size

## CONTROL



Large paddle switch for extra control and comfort

## PERFORMANCE



LXT Li-Ion batteries charge in 30 minutes, run longer and deliver 2.5X more cycles

## CONVENIENCE



Chuck key holder attaches to either side of tool for easy access

Models  
BDA350  
BDA350Z

LXT  
LITHIUM-ION

# DRILLING IN TIGHT SPOTS

makitatools.com

Download from [www.Somanuals.com](http://www.Somanuals.com). All Manuals Search And Download.

# 18V LXT LITHIUM-ION CORDLESS 3/8" ANGLE DRILL KIT

## Models BDA350 / BDA350Z

### FEATURES & BENEFITS

- Makita-built 4-pole motor delivers 121 in.lbs. of torque in a compact size
- Variable speed (0-1,800 RPM) for a wide range of drilling and driving applications
- Compact design at only 12-3/8" long and weighs only 3.5 lbs. for reduced operator fatigue
- 3/8" keyed metal chuck for improved bit gripping power and a lower profile for use in close quarters applications
- Built-in L.E.D. light illuminates the work area
- Ergonomic shape fits like a glove with even pressure and easy control
- Easy to handle large paddle switch with soft grip provides increased comfort on the job
- Makita Lithium-Ion provides longer run time, 5X lower self-discharge (for use any time) and 16 firm holding contact terminals (for constant high power)
- 30-minute rapid optimum charger communicates with the battery life by actively controlling current, voltage and temperature
- 30-minute rapid optimum charger has a built-in fan to cool the battery to produce more lifetime work
- 3-year warranty on a tool and 1-year warranty on battery and charger



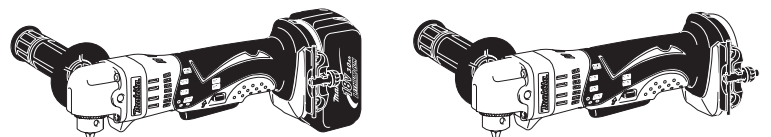
### STANDARD EQUIPMENT

- 2 ea. 18V LXT Lithium-Ion 3.0Ah battery (BL1830)
- 30-minute rapid optimum charger (DC18RA)
- Plastic battery cover (450128-8)
- Chuck key holder (450688-0)
- Chuck key (763415-9)
- Contractor bag (821007-X)



### SPECIFICATIONS

Capacities:	Steel (3/8") Wood (1")
No load speed	0-1,800 RPM
Maximum torque	121 in.lbs.
Watt hours	54.0
Battery	18VDC (3.0Ah)
Overall length	12-3/8"
Net weight	3.5 lbs. (w/battery)
Shipping weight	(BDA350) 13.5 lbs. (BDA350Z) 3.2 lbs.
Master carton qty.	1
UPC	(BDA350) 088381-094528 (BDA350Z) 088381-094504



Model BDA350



Model BDA350Z



### OPTIONAL ACCESSORIES

- Belt hook (324705-1)
- Optimum automotive charger (DC18SE)



For a complete listing of Driver Drills and accessories please refer to the Makita General Catalog, or visit our website at [makitatools.com](http://makitatools.com), or call 1-800-4MAKITA.

All specifications subject to change without prior notice. All models and accessories subject to stock on hand.  
NTF-0808-400 MA-0751-08 For more information, call 1-800-4MAKITA or visit [makitatools.com](http://makitatools.com)



## Free Manuals Download Website

<http://myh66.com>

<http://usermanuals.us>

<http://www.somanuals.com>

<http://www.4manuals.cc>

<http://www.manual-lib.com>

<http://www.404manual.com>

<http://www.luxmanual.com>

<http://aubethermostatmanual.com>

Golf course search by state

<http://golfingnear.com>

Email search by domain

<http://emailbydomain.com>

Auto manuals search

<http://auto.somanuals.com>

TV manuals search

<http://tv.somanuals.com>