

Makita

18V LXT LITHIUM-ION 1/2" HAMMER DRIVER-DRILL

POWERFUL MAKITA-BUILT, 4-POLE MOTOR DELIVERS 560 IN.LBS. OF MAXIMUM TORQUE.

2-Speed All Metal Transmission (0-400 / 0-1,700 RPM) Covers a Wide Range of Applications

Shift-Lock™ Drive System Quickly Shifts Between Drilling, Driving and Hammer Modes

Compact Design at only 9-9/16" Long and Weighs Only 4.9 lbs for Reduced Operator Fatigue



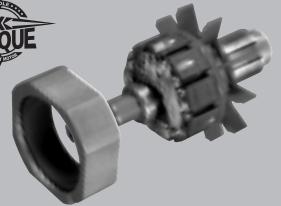
LXT LITHIUM-ION

Models
BHP454
BHP454Z

18V POWER.
12V WEIGHT.™

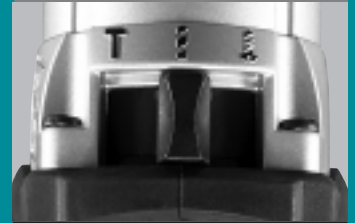
POWER

MAX
TORQUE



Makita-built 4-pole motor delivers 560 in.lbs. of maximum torque

CONVENIENCE



Shift-Lock™ drive system quickly shifts between 3 modes (Hammer / Driver / Drill)

COMFORT



Ergonomic shape fits like a glove with even pressure and easy control

PERFORMANCE



LXT Li-Ion batteries charge in 30 minutes, run longer and deliver 2.5X more cycles

560 IN.LBS. OF TORQUE

18V LXT LITHIUM-ION CORDLESS 1/2" HAMMER DRIVER-DRILL

Models BHP454 / BHP454Z

FEATURES & BENEFITS

- Makita-built 4-pole motor delivers 560 in.lbs. of maximum torque
- 2-Speed all metal transmission (0-400 / 0-1,700 RPM) covers a wide range of drilling, driving and hammer applications
- Shift-Lock™ drive system quickly shifts between modes
- Compact and lightweight design for reduced operator fatigue
- 2 Trigger-forward built-in L.E.D. lights illuminate the work area
- Ergonomic shape fits like a glove with even pressure and easy control
- Soft grip handle provides increased comfort on the job
- Makita Lithium-Ion battery provides longer run time, 5x lower self discharge (for use any time) and 16 firm holding contact terminals (for constant high power)
- 30-minute rapid optimum charger communicates with the battery's built-in memory chip throughout the charging process to optimize battery life by actively controlling current, voltage and temperature
- 30-minute rapid optimum charger has a built-in fan to cool the battery to produce more lifetime work
- The charger earned the ENERGY STAR label for meeting the strict energy-efficient guidelines set by the US Environmental Protection Agency (EPA) and US Department of Energy (DOE)
- 3-year warranty on tool and 1-year warranty on battery and charger

STANDARD EQUIPMENT

- 2 ea. 18V LXT Lithium-Ion 3.0Ah battery (BL1830)
- 30-minute rapid optimum charger (DC18RA)
- Tool belt clip and screw (324705-1 and 251314-2)*
- Side handle (450651-3)*
- Depth gauge (322223-3)*
- Bit holder (419276-2)*
- Screwdriver bits (784637-8)*
- Plastic battery cover (450128-8)
- Tool case (824753-5)

Model BHP454Z (tool only) - battery, charger and case not included

* Included as standard equipment for BHP454Z

SPECIFICATIONS

Capacity	Steel (1/2") / Wood (2-9/16") / Masonry (5/8")
No load speed	0 - 400 / 1,700 RPM
Blows per minute	0-6,000 / 0-25,500 BPM
Maximum torque	560 in.lbs.
Battery	18VDC (3.0Ah)
Overall length	9-9/16"
Net weight (w/ battery)	4.9 lbs.
Shipping weight	(BHP454) 15 lbs. (BHP454Z) 4.7 lbs.
Master carton qty.	3
UPC	(BHP454) 088381-091435 (BHP454Z) 088381-091428

OPTIONAL ACCESSORIES

- Optimum automotive charger (DC18SE)



Model BHP454



Model BHP454Z



For a complete listing of Makita DRIVER-DRILLS and accessories please refer to the Makita General Catalog, or visit our website at makitatools.com, or call 1-800-4MAKITA.

All specifications subject to change without prior notice. All models and accessories subject to stock on hand.

NTF-0908-4M MA-0790-08

For more information, call 1-800-4MAKITA or visit makitatools.com

Download from www.Somanuals.com. All Manuals Search And Download.



Makita U.S.A., 14930 Northam St., La Mirada, CA 90638

Free Manuals Download Website

<http://myh66.com>

<http://usermanuals.us>

<http://www.somanuals.com>

<http://www.4manuals.cc>

<http://www.manual-lib.com>

<http://www.404manual.com>

<http://www.luxmanual.com>

<http://aubethermostatmanual.com>

Golf course search by state

<http://golfingnear.com>

Email search by domain

<http://emailbydomain.com>

Auto manuals search

<http://auto.somanuals.com>

TV manuals search

<http://tv.somanuals.com>