

Makita®

4-1/2", 5" & 6" ANGLE GRINDERS

SJS TECHNOLOGY STOPS THE WHEEL AND HELPS PREVENT GEAR DAMAGE

Powerful 13 AMP Motor Delivers More Output for Increased Performance

Gear Housing can be Rotated 90° Left and Right for Cutting and Grinding Applications

Refined Design at Only 4.2 lbs.

Labyrinth Construction Seals and Protects the Motor from Dust and Debris by Creating a Complex Set of Channels Prohibiting Contamination

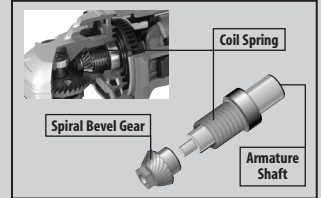
Ideal for Welders, Fabricators, Masons, Maintenance/Repair and More



Models
9564PC (4-1/2")
9565PC (5")
9566PC (6")

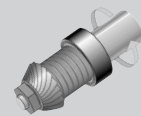
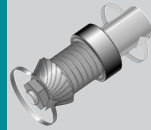
INNOVATION

SJS - SUPER JOINT SYSTEM



The motor armature and the spiral bevel gear are connected by a coil spring.

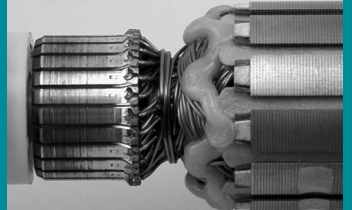
As the armature starts to rotate, the coil tightens around the spiral bevel gear, which drives the grinding wheel.



If the grinding wheel should accidentally catch or bind, the gears automatically disengage from the motor. SJS stops the wheel, minimizes grinder kickback, and protects the gears.

Lock Spring that joins armature shaft and spiral bevel gear protects the gears by absorbing shock

DURABILITY



Protective Zig-Zag varnish seals the motor from dust and debris for longer life

COMFORT



Ergonomic paddle switch for operator comfort

PERFORMANCE DRIVEN

makitatools.com

Download from www.Somanuals.com. All Manuals Search And Download.

4-1/2", 5" & 6" ANGLE GRINDERS

Models 9564PC, 9565PC, 9566PC

FEATURES & BENEFITS

- Super Joint System (SJS) helps prevent gear damage
- Powerful 13 AMP motor delivers more output for increased performance
- Gear housing rotates 90° left and right for cutting and grinding applications
- Refined design at only 4.2 lbs.
- "Tool-less" wheel guard to help increase productivity
- Labyrinth construction seals and protects the motor from dust and debris by creating a complex set of channels prohibiting contamination
- Externally accessible brushes for greater serviceability
- Ideal for welders, fabricators, masons, maintenance/repair and more

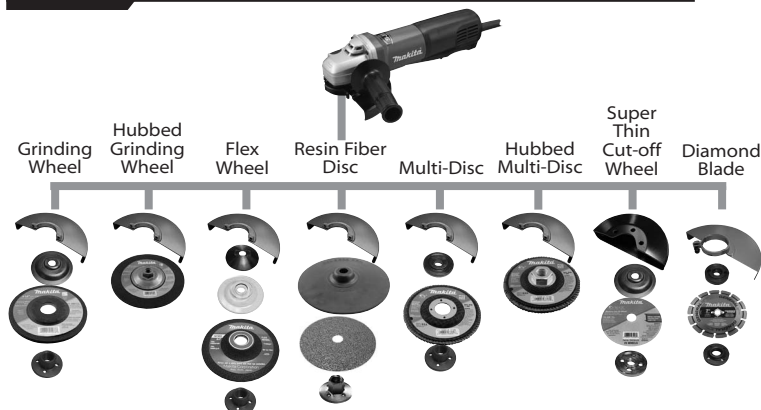
STANDARD EQUIPMENT

	9564PC	9565PC	9566PC
4-1/2" Grinding wheel (741423-0-1)	•		
5" Grinding wheel (741407-8-1)		•	
6" Cutting wheel (724117-A)			•
"Tool-less" wheel guard (135107-4)	•		
"Tool-less" wheel guard (135108-2)		•	
Cutting wheel guard (165486-6)			•
Inner flange (224399-1)	•	•	
Inner flange (224390-9)			•
Lock nut (224568-4)	•	•	
Lock nut (224574-9)			•
Side handle (153489-2)	•	•	•
Lock nut wrench (782424-9)	•	•	•

SPECIFICATIONS

	9564PC	9565PC	9566PC
Grinding wheel	4-1/2"	5"	6"
Wire cup brush	3-1/2"	3-1/2"	3-1/2"
Sanding disc	4-1/2"	5"	6"
No load speed	11,500 RPM	11,500 RPM	10,000 RPM
AMPS	13	13	13
Spindle thread	5/8" - 11 UNC	5/8" - 11 UNC	5/8" - 11 UNC
Length	12-1/8"	12-1/8"	12-1/8"
Net weight	4.2 lbs.	4.2 lbs.	4.2 lbs.
UPC	088381-085144	088381-085168	088381-085182

OPTIONAL ACCESSORIES



Makita offers a wide variety of ANGLE GRINDER accessories. For a complete listing, please refer to the Makita General Catalog, or visit our website at makitatools.com, or call 1-800-4MAKITA.

All specifications subject to change without prior notice. All models and accessories subject to stock on hand.
NTF-0108-5M MA-1012-07 For more information, call 1-800-4MAKITA or visit makitatools.com



Warning: Consult owner/operator manual and adhere to all safety precautions for accessory items. Always use recommended guards. Failure to do so may result in serious injury or death. Refer to ANSI B7.1 and owner/operator manual for proper accessory mounting and grinding procedures and always wear ANSI Z87.1 eye protection.



Free Manuals Download Website

<http://myh66.com>

<http://usermanuals.us>

<http://www.somanuals.com>

<http://www.4manuals.cc>

<http://www.manual-lib.com>

<http://www.404manual.com>

<http://www.luxmanual.com>

<http://aubethermostatmanual.com>

Golf course search by state

<http://golfingnear.com>

Email search by domain

<http://emailbydomain.com>

Auto manuals search

<http://auto.somanuals.com>

TV manuals search

<http://tv.somanuals.com>